

HAWAII ADMINISTRATIVE RULES

TITLE 13

DEPARTMENT OF LAND AND NATURAL RESOURCES

SUBTITLE 4 FISHERIES

PART V PROTECTED MARINE FISHERIES RESOURCES

CHAPTER 89

SPINY LOBSTER OR ULA AND
SLIPPER LOBSTER OR ULA PAPAPA

§13-89-1 Prohibited activities

§13-89-2 Penalty

Historical Note: Chapter 89 of Title 13 is based substantially upon Regulation 22 of the Division of Fish and Game, Department of Land and Natural Resources, State of Hawaii. [Eff. 3/28/58; am 10/6/58; am 7/9/59; am 7/18/59 (Governor's approval date); am 9/17/60 (Governor's approval date); am 8/4/78; R 5/26/81]

§13-89-1 Prohibited activities. No person shall catch, take, trap, kill, possess, remove, sell, or offer for sale, any spiny lobster or ula (Panulirus penicillatus and P. marginatus) and slipper lobster or ula papapa (Scyllarides squamosus) and S. haani) from the waters of the State, except that a person may catch, take, trap, kill, possess, remove, sell or offer for sale, lobster:

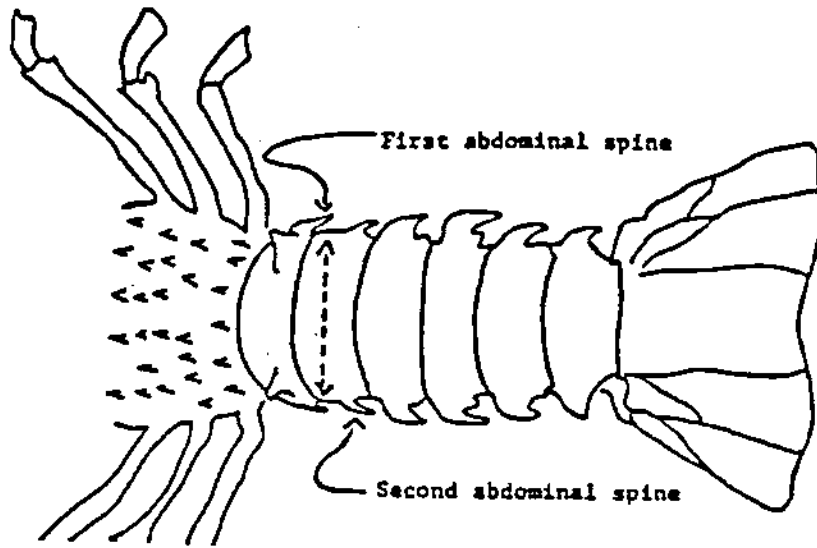
- (1) From waters adjacent to the main Hawaiian islands lying to the east of 161° 00' W longitude from and including the island of Kaula, to and including the island of Hawaii provided that:
 - (A) Whole spiny lobsters shall not measure less than three and one-fourth inches (8.26 centimeters) in carapace length, measured in a straight line along the carapace or head, from the ridge between the two largest spines above the eyes to

- the rear edge of the carapace;
 - (B) Whole slipper lobsters shall not measure less than two and three-fourth inches (7.0 centimeters) in tail width, measured in a straight line across the widest spot of the tail between the first and second abdominal segments; and
 - (C) Shall not be in a condition where the body is mutilated, or the carapace and tail are separated; and
- (2) From waters adjacent to the Northwestern Hawaiian islands lying to the west of 161° 00' W longitude from and including the island of Nihoa, to and including Kure Atoll provided that:
- (A) Tails of spiny lobsters may not measure less than two inches (5.0 centimeters) in width measured in a straight line across the widest spot between the first and second abdominal spines as described in "Spiny Lobster Tail Width Measurement Site" attached at the end of this chapter;
 - (B) Tails of slipper lobsters may not measure less than two and three-sixteenth inches (5.6 centimeters) in tail width measured in a straight line across the widest spot of the tail between the first and second abdominal segments as described in "Slipper Lobster Tail Width Measurement Site" attached at the end of this chapter;
 - (C) Lobsters may not be taken in waters less than ten fathoms (18.3 meters) in depth or from within twenty miles (32.3 kilometers) from the island of Laysan;
 - (D) Lobsters may not be taken by means other than trap and the smallest opening of an entryway of any lobster trap may not allow any sphere or cylinder greater than six and one-half inches (16.5 centimeters) in diameter to pass from outside the trap to inside the trap; except that lobsters may be taken by hand at Kure Atoll; and
 - (E) A lobster trap must be equipped with at least two (2) escape vent panels placed on opposite sides of the trap. An escape vent panel must have four (4) - two and

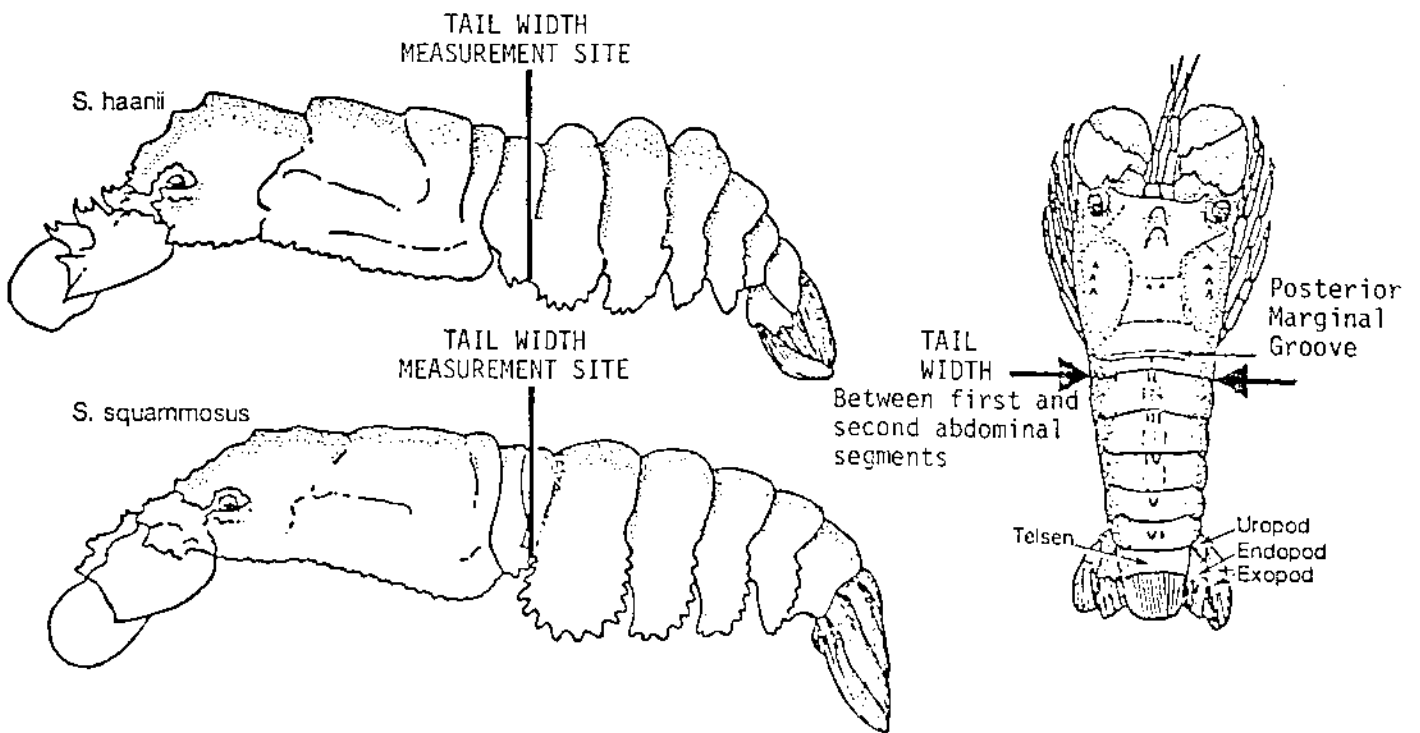
five-eighth inches (6.7 centimeters) diameter escapement holes arranged in a horizontal line five-eighth inch (1.5 centimeters) apart with the lowest point of each hole not more than three and three-eighth inches (8.5 centimeters) from the floor of the trap as described in "Lobster Trap Escape Vent Panels" attached at the end of this chapter. [Eff: 5/26/81; am 6/6/83, am 6/25/84, am and comp 2/6/87; am and comp 5/5/88, am and comp AUG 14 1989] (Auth: HRS §187A-5) (Imp: HRS §187A-5)

§13-89-2 Penalty. Any person violating the provisions of this chapter shall be punished as provided by section 188-70, Hawaii Revised Statutes. [Eff: 5/26/81; am and comp 2/6/87; comp 5/5/88; comp AUG 14 1989] (Auth HRS §187A-5) (Imp HRS §§187A-13, 188-70)

SPINY LOBSTER TAIL WIDTH MEASUREMENT SITE



SLIPPER LOBSTER TAIL WIDTH MEASUREMENT SITE



LOBSTER TRAP ESCAPE VENT PANELS

