

THE "GOT FISH" STORY CONTINUED...

Background

- MRFSS (Marine Recreational fishery Statistical Survey) started in Hawaii in 1979 and lasted for only two years due in part to funding and staffing restrictions.
- MRFSS has been an ongoing project in most coastal states in the continental US since 1979.
- HMRFS (Hawaii Marine Recreational Fishing Survey) is now back in Hawaii for several reasons:
 1. You, as the recreational or subsistence fisher, play an important role in Hawaiian fisheries management.
 2. In Hawaii there are little or no data on recreational/subsistence fisheries, most of the data are on commercial fisheries.
 3. In a few years an international commission may decide who gets what out of the ocean and when the U.S. turn comes they will look to Hawaii and the U.S. territories for information.
 4. However, if the only data available are commercial catch data, chances are the recreational fishers may be left out when the time comes to give out portions of the resources.
- *Therefore, your cooperation with HMRFS field and telephone interviewers will help ensure that recreational marine angling in Hawaii remains a productive and rewarding experience.*

The Survey Team

There are a total of 7 Surveyors on three islands.

- Oahu - Richard Beebe, John Burke, Steve Kaneko and Larry Spalding
- Hawaii - Wesley Murkane and John Dill
- Maui - Gary Boteilho

New Survey Manager



Matthew Parry obtained his Master's degree in Oceanography in 1998 and will obtain his Ph.D. in Oceanography from UH Manoa this summer. His specialty is higher order pelagic foodweb interactions. Specifically, his dissertation

focused on a comparison of the trophic ecology of two oceanic squid species, *Ommastrephes bartramii* and *Sthenoteuthis oualaniensis*, in Hawaiian waters. Matt used the stomach contents of each species, as well as stable isotope analyses, to understand where these animals fit in their environment.

How Data Will Be Used

The compiled and published data will provide resource managers key information, such as:

- estimates of total effort and catch of recreational fishermen in the state;
- total fisheries effort and catch in the state by combining recreational and commercial fishery estimates (for the first time in Hawaii);
- catch and effort around the FADs to help justify the continuation of the FAD program;
- support information for the need to improve recreational fishing infrastructure (ramps, piers, etc.);
- ability to forecast trends in the fisheries;
- better data to manage fisheries more effectively – to point out where existing laws and regulations need to be improved;
- better stock assessments and study species life cycles;
- help DAR understand the fishermen better;
- support the importance of recreational fishing in Hawaii.

For example, here are a few graphs illustrating the kind of results generated from data that have already been collected...**Please see other side** ↩

HMRFS-Private/Rental boat ONLY selected fish landings

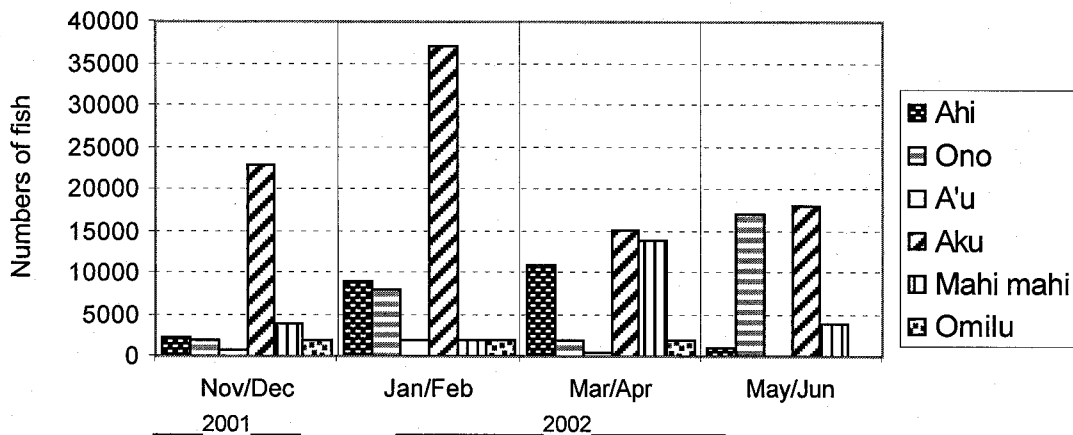


Figure 1. The numbers of six fish species landed from private and rental boats during two month "wave" intervals from November 2001 to June 2002.

Preliminary Fishing Effort Estimates HMRFS Private/Rental Boats ONLY

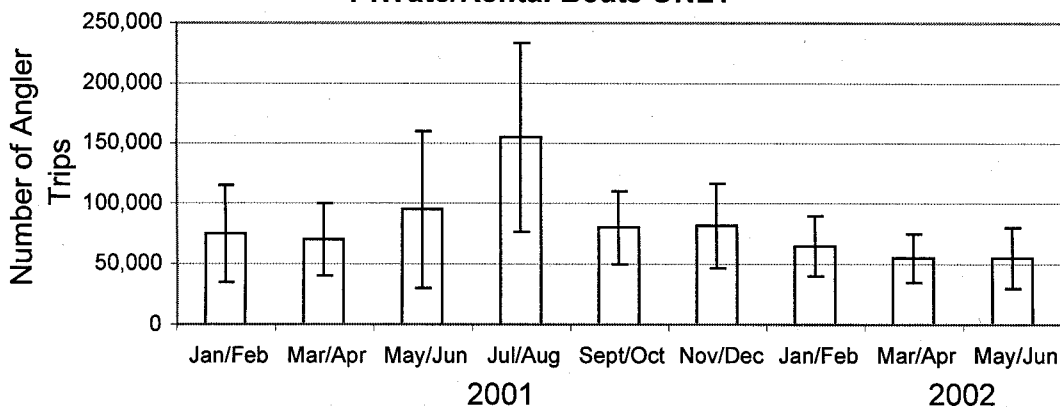


Figure 2. The average number of fishing trips taken by private and rental boats during two month "wave" intervals from January 2001 to June 2002. The thin lines on the graph are errors in the estimates.

Preliminary Fishing Effort Estimates HMRFS - Shoreline ONLY

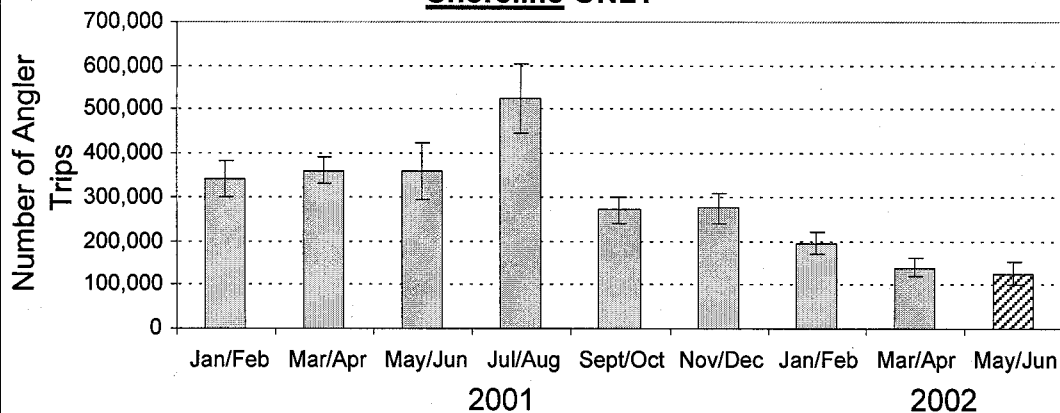


Figure 3. The average number of fishing trips taken by shoreline fishermen during two month "wave" intervals from January 2001 to June 2002.

- The HMRFS Wave Report is our newsletter published quarterly, recapping some of the general information gathered from the surveys. This is an information bulletin only. All data reporting is preliminary and is not for any use of publication other than this report.

- For further information on the HMRFS project, contact the project manager (Matt Parry) at the Division of Aquatic Resources, 1151 Punchbowl St., Honolulu, Hawaii 96815. Phone: (808) 282-6774.