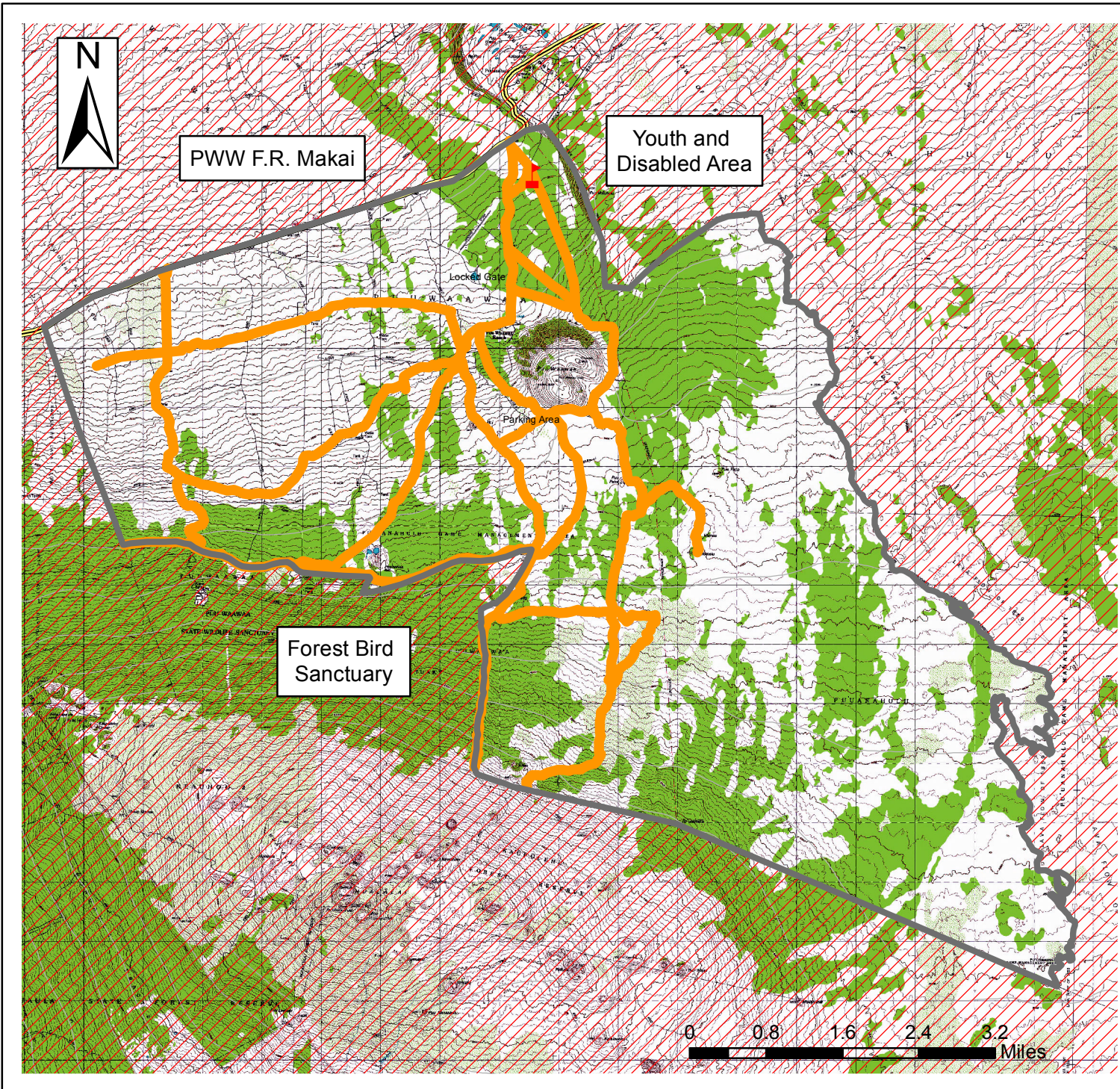


Puu Waawaa (PWW) Forest Reserve (F.R.) Mauka Ungulate Control Program 2016



- PWW F.R. Mauka Boundary
- Safety Zone
- Check Station
- Designated Roads
- Highway

NOTICE: for PWW Mauka Ungulate Control Program

- 2016 non-typical ram and/or goat tag(s) must be acquired to hunt in this area
- Must possess current Hawaii hunting license and be familiar with CH 123 (game mammal rules)
- For sheep: whole carcasses must be checked at the hunter check station. Genitalia must remain attached. Entrails may be removed.
- Goats may be skinned and boned, but the tail must remain attached for identification purposes.
- No ATVs are allowed
- Vehicular access and parking is restricted to designated roads
- Do not shoot towards houses and maintain safety protocols
- Do not park in high grass or vegetation
- Close gates if they are closed
- You MUST sign in and out at hunter check station
- Check in begins at 5:00 am
- Check out no later than 7:45 pm
- Be CAUTIOUS of others
- DOCARE (enforcement) # - 643-3567
- PWW Hunter Check Station # - 430-9045
- call 911 for emergencies including fire