



South Kohala Conservation Action Plan: Phase 2

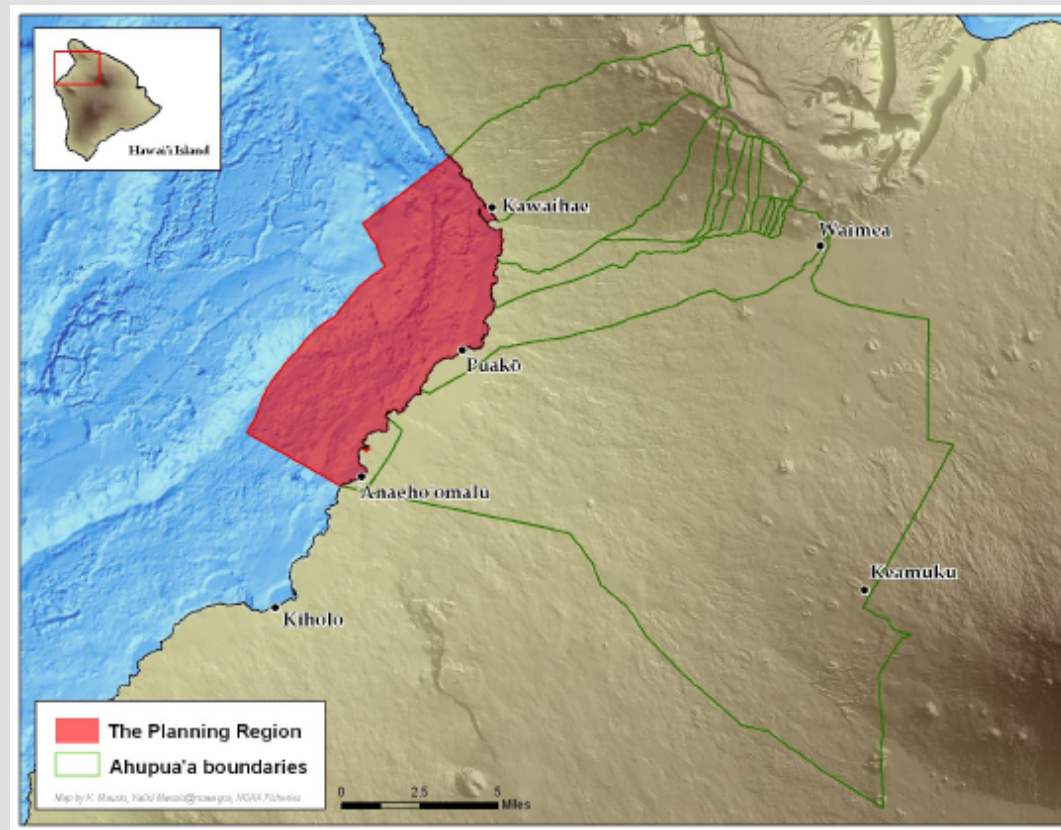




Overview

- **SKCAP Core Plan Team**
- **Conservation Targets**
- **Critical Threats**
- **Conservation Goals**
- **Conservation Strategies**
- **Measuring Success**

South Kohala, Hawai'i





SKCAP Phase 2 Goals

- **Refine and prioritize strategies with additional expert review**
- **Develop indicators to measure success of the strategies**
- **Identify first steps to begin implementation**
- **Complete CAP document, “credible first iteration”**



South Kohala Planning Team

Affiliation	Expertise	Representative
DAR	Reef Ecology	Steve Cotton
Hawai'i County	Planning	Keola Childs
University of Hawai'i SeaGrant	Community Liason	Sara Peck
Kohala Coast Resort Association	Tourism Partnerships	Sharon Sakai
Community stakeholder	Shoreline Fisherman	Kawika Auld
Kohala Watershed Partnership	Watershed Restoration	Melora Purell
Mauna Lani Sea Adventures	Marine Recreation Provider/ kūpuna	Francis Ruddle
Kalahuipua`a Fishpond	Loko i`a Manager/ kūpuna	Pi`i Laeha
Ala Kahakai NHT	Archaeology	Rick Gmirken
Ala Kahakai NHT	Management	Aric Arakaki
The Nature Conservancy	Marine Science	Eric Conklin
University of Hawaii	Recreational Impacts	Emma Anders



H
~
S

South Kohala CAP Advisory Team

- Mauna Lani Resort Loko i`a
- Nā Kālai Wa`a
- Kanu O Ka `Aina New Century Charter School
- West Hawaii Fisheries Council
- Puakō Community Association
- Community Stakeholder
- University of Hawai`i at Hilo
- Division of Conservation and Resources Enforcement (DOCARE)
- DOCARE Supervisory Agent
- Hawai`i County Planning Dept.
- Community Stakeholders
- Ka`ūpūlehu Marine Life Advisory Committee
- Kamehameha Schools Kapili `Oihana Program
- Ainalea Developments
- Kohala Coast Resort Association
- Kohala Watershed Partnership
- Office of Hawaiian Affairs
- Mauna Lani Homeowners Association
- Hualalai Resorts
- Division of Aquatic Resources
- CORAL Reef Alliance
- South Kohala Community Development Plan Action Committee
- Waikoloa Land Company
- Hualalai Resorts
- Kawaihae Homesteads Community Association
- Community Stakeholder
- Mauna Lani Sea Adventures
- University of Hawai`i SeaGrant
- Hawai`i Preparatory Academy
- Environmental Protection Agency
- United States Geological Survey
- Ala Kahakai National Historic Trail
- The Nature Conservancy
- University of Hawai`i



Priority Target Resources

- 1. Coastal & marine food resources**
- 2. Coral reef ecosystems**
- 3. Native reef herbivores**
- 4. Native reef predators**
- 5. Coastal wetlands**
- 6. Community kinship & stewardship**



High Priority Threats

- 1. Unsustainable fishing practices**
- 2. Invasive species**
- 3. Land-based sources of pollution**



Priority Strategies

- 1. Community partnerships**
- 2. Community co-managed areas (CCAs)**
- 3. Fisheries management**
- 4. Sediment reduction**
- 5. Invasive species**
- 6. Additional threat analysis**



Strategy 1: Community Partnerships

Objective: Active communities engaged in managing all six target coastal resources throughout the South Kohala region and incorporating kinship into their approach by 2015.

- 1. Identify organizations, agencies and individuals with activities or interests in marine resource management in South Kohala (e.g. community groups, government, non-profit organizations, businesses, schools, visitor industry), and develop working community partnerships with those that share the objectives of this Conservation Action Plan (CAP). (H)**
- 2. Seek guidance from communities and individuals with ancestral connections to South Kohala to respect, support and foster their traditional kinship with and stewardship of the target coastal resources. (H)**
- 3. Design, convene, establish and facilitate an effective South Kohala network of community partners committed to managing all six target coastal resources throughout the region. (H)**
- 4. Establish a program to strengthen local resource management capacity that responds to priority needs identified by community partners (e.g. Makai Watch, grant writing, communications). (H)**



Strategy 2: Community Co-Managed Areas

Objective: Work with communities to establish at least one community co-managed area in South Kohala with strong community support by 2015, and initiate at least two additional areas by 2020.

- 1. Provide technical support to community partners for planning, implementing, and financing community co-managed areas in South Kohala. (H)**
- 2. Work with DLNR and South Kohala community to establish and pilot a process for creating community co-managed areas, including agreement on a model set of rules. (H)**
- 3. Establish a monitoring program to understand how human activities and target biological resources change over time based on management actions. (M)**
- 4. Develop a communication strategy to build support for community co-managed areas in West Hawai'i by key decision makers. (M)**



Strategy 3: Fisheries Management

Objective: Implement fisheries management actions that ensure healthy coastal resources through supporting pono (sustainable and appropriate) fishing practices, and increase compliance by 50% by 2020.

- 1. Support passage of DLNR's current West Hawai'i rules package. (H).**
- 2. Integrate traditional ecological knowledge, modern science, and community information to identify and support improved rules and best management practices needed for effective fisheries management to ensure healthy coastal target resources in South Kohala. (H)**
- 3. Reassign lead responsibility for handling violations of state coastal resource laws, rules and regulations from the criminal courts to the civil penalty system administered by DLNR. (H)**
- 4. Support Makai Watch, including Educational Rangers, in at least two sites. (H)**
- 5. Conduct a pilot study to evaluate the potential for a recreational fishing license program in at least one priority area of South Kohala. (M)**
- 6. Implement effective research and monitoring to quantify effects of fisheries management actions on relevant CAP targets. (M)**
- 7. Increase community-specific and location-appropriate education to increase awareness, buy-in, malama i ka aina, and voluntary compliance to ensure healthy CAP resources in South Kohala. (M)**



Strategy 4: Sediment Reduction

Objective: Implement priority projects to reduce sediment and measurably improve the condition of priority coastal targets in at least one priority coastal area by 2015.

- 1. Implement priority projects from existing watershed management plans *that address priority coastal targets.* (H)**
- 2. Implement projects that establish riparian buffer zones *in priority areas.* (H)**
- 3. Measure effectiveness of implemented sediment reduction projects *on relevant priority targets.* (H)**
- 4. Review existing state and Hawai'i county land management regulations & policies, and strengthen them to reduce sediment and nutrient run-off. (M)**



Strategy 5: Invasive Species

Objective: Prevent new introductions and manage existing non-native and invasive species to restore/maintain ecosystem function for 50% of managed priority anchialine pools, fishponds, and reefs by 2020.

- 1. Remove habitat modifying non-native and invasive species, starting with mangrove and tilapia, to restore/maintain ecosystem function for 50% of managed priority anchialine pools and fishponds. (H)**
- 2. Assess impact of potentially habitat-modifying non-native and invasive species, starting with kiawe and roi, and identify appropriate management actions. (M)**
- 3. Establish an effective early detection/rapid response protocol for invasive species in anchialine pools, fishponds, and reefs. (H)**
- 4. Review and revise state and county policies and rules to implement precautionary principle on importation, culture, and movement of non-native aquatic species (e.g. “white list,” Chapter 197). (M)**



Strategy 6: Additional Threat Assessment

Objective: Understand and quantify effects of specific additional threats on CAP targets by 2020. NOTE: Strategy 6 is not a priority for implementation in 2012-13.

- 1. Understand *sources and relative impacts of nutrients from cesspools/septic systems, injection wells, golf courses, and agricultural lands for South Kohala (nutrient budget). (M)***
- 2. Understand *circulation patterns in and around Kawaihae, evaluate impact of Kawaihae Harbor on sediment residency time in South Kohala, and recommend best management practices for action. (M)***
- 3. Review fuel spill prevention and response plan for Kawaihae Harbor, and revise as necessary to protect target coastal resources. (M)**
- 4. Assess *potential impacts to target coastal resources from offshore aquaculture and energy development, and develop strategies to address if warranted. (M)***
- 5. Assess *the projected impacts of climate change on the target coastal resources in South Kohala and implement priority actions to optimize climate change resilience. (M)***



SKCAP Final Outputs

- **Six fully reviewed and prioritized conservation strategies to address threats to coastal and marine life in South Kohala**
- **Measures for evaluating strategies and targets**
- **A dynamic partnership committed to implementation**
- **Work plans for six priority strategies submitted to the Coral Reef Working Group**
- **Two-page summary document for sharing CAP**
- **Seventy-six member participant network**



SKCAP Final Outputs

Final Report is available online:

www.hawaiicoralreefstrategy.com >> Priority Sites >> South Kohala



SKCAP Next Steps

- **Hire Coordinator (2 years, full time): December 2012**
 - **Track effectiveness monitoring and support CAP adaption as necessary**
 - **Facilitate collaborative implementation of CAP**
 - **Implement select CAP strategies (i.e. outreach)**
- **Implement watershed management projects (Wai`ula`ula Watershed Plan)**
 - **Conduct Stream Corridor Assessment (identify hot spots): Jan. 2013**
 - **Map the hot spots: Oct. 2013**
 - **Implementation small restoration activity: Oct. 2013**
- **Implement CAP priority strategies with partners**



Special Thanks:

Chad Wiggins

Petra MacGowan

James Byrne

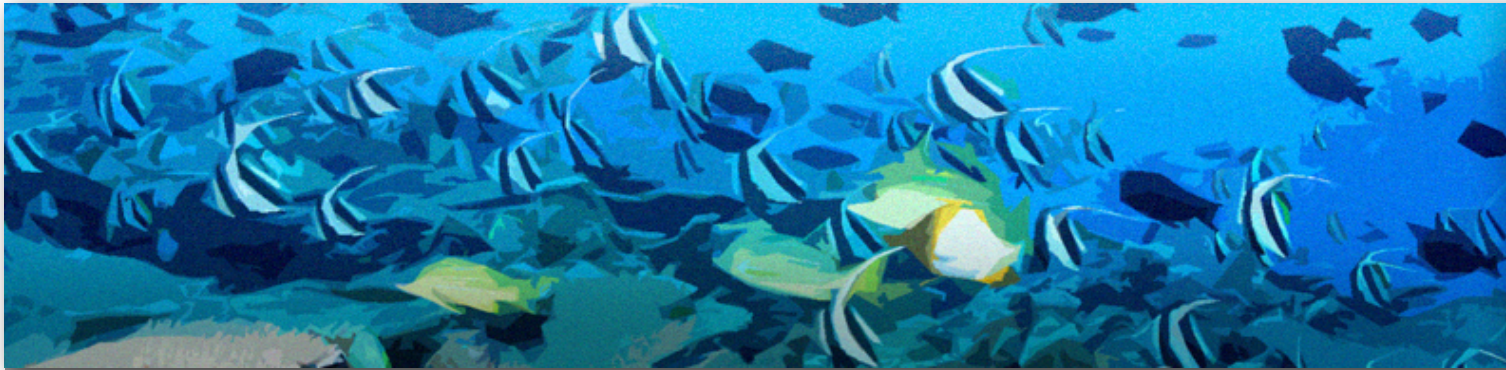
TNC Support Staff

DAR Kona

Planning Team

Advisory Team

**...and to the many
individuals and
agencies who made all
these projects
possible and who
continue to work to
restore the reefs of
South Kohala**



HAWAII
~coral reef~
STRATEGY

Questions?

