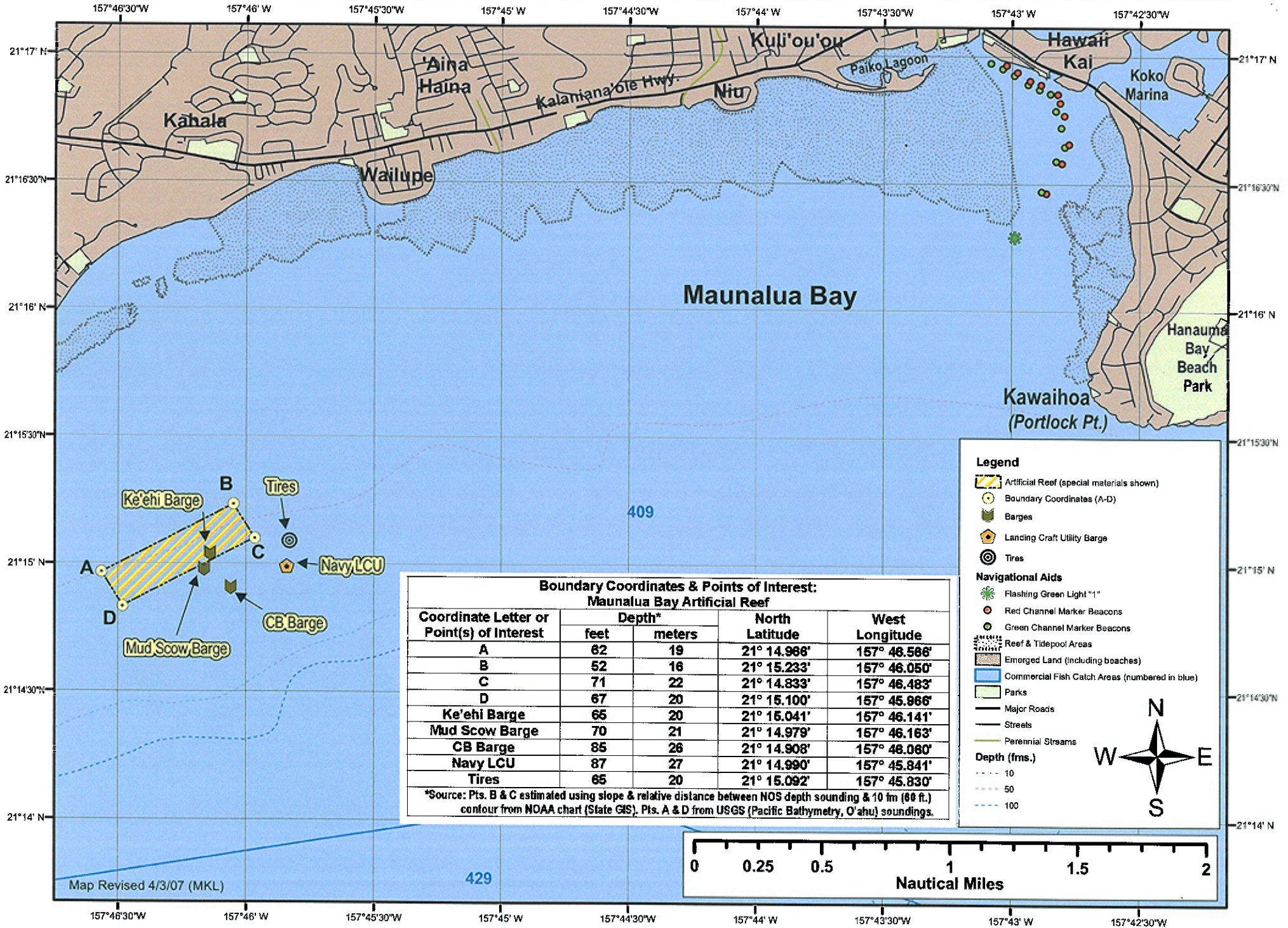


Maunaloa Bay Artificial Reef, O'ahu



**Boundary Coordinates & Points of Interest:
Maunaloa Bay Artificial Reef**

Coordinate Letter or Point(s) of Interest	Depth*		North Latitude	West Longitude
	feet	meters		
A	62	19	21° 14.966'	157° 46.566'
B	52	16	21° 15.233'	157° 46.050'
C	71	22	21° 14.833'	157° 46.483'
D	67	20	21° 15.100'	157° 45.966'
Ke'ehi Barge	65	20	21° 15.041'	157° 46.141'
Mud Scow Barge	70	21	21° 14.979'	157° 46.163'
CB Barge	85	26	21° 14.908'	157° 46.080'
Navy LCU	87	27	21° 14.990'	157° 45.841'
Tires	65	20	21° 15.092'	157° 45.830'

*Source: Pts. B & C estimated using slope & relative distance between NOS depth sounding & 10 fm (60 ft.) contour from NOAA chart (State GIS). Pts. A & D from USGS (Pacific Bathymetry, O'ahu) soundings.

Legend

- Artificial Reef (special materials shown)
- Boundary Coordinates (A-D)
- Barges
- Landing Craft Utility Barge
- Tires

Navigational Aids

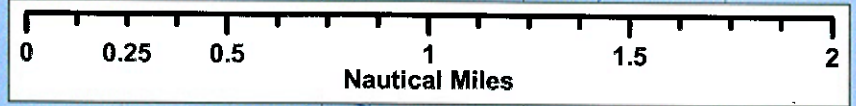
- Flashing Green Light "11"
- Red Channel Marker Beacons
- Green Channel Marker Beacons

Map Features

- Reef & Tidepool Areas
- Emerged Land (including beaches)
- Commercial Fish Catch Areas (numbered in blue)
- Parks
- Major Roads
- Streets
- Perennial Streams

Depth (fms.)

- 10
- 50
- 100



Map Revised 4/3/07 (MKL)

429