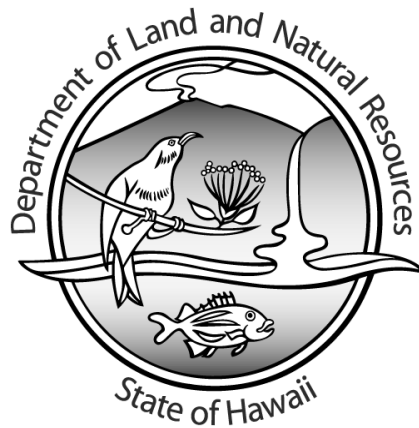


# COMMERCIAL MARINE LANDINGS SUMMARY TREND REPORT

CALENDAR YEAR 1998

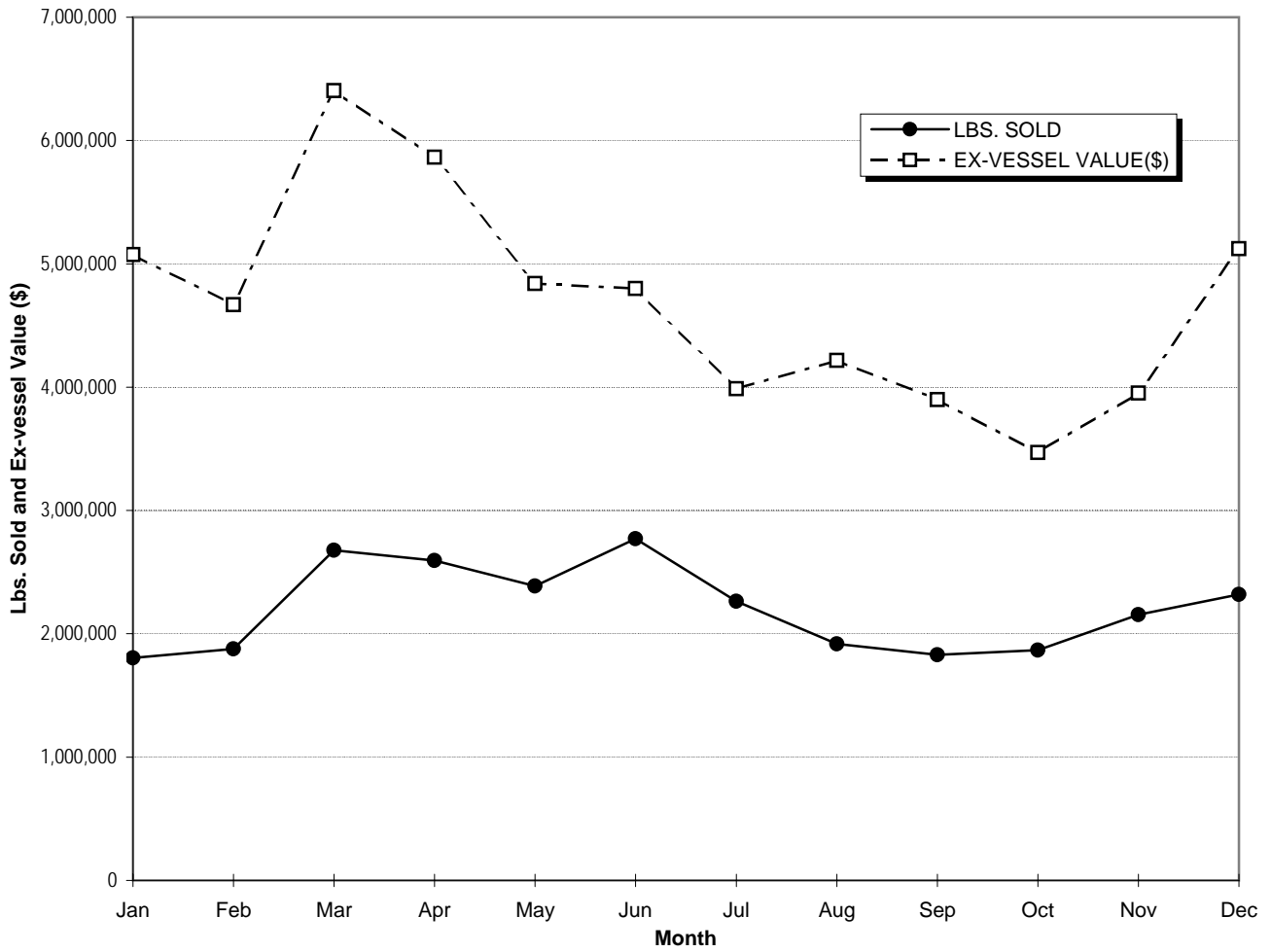


**DIVISION OF AQUATIC RESOURCES**  
**DEPARTMENT OF LAND AND NATURAL RESOURCES**  
**STATE OF HAWAII**

# TABLE OF CONTENTS

	<b>Page No.</b>
<b>I. CHARTS</b>	
<b>A. TOTAL SEA LANDINGS</b>	
1. Annual Monthly Trends .....	1
2. Annual 5-year Trends .....	2
<b>B. SEA LANDINGS BY SPECIES GROUPS</b>	
1. Annual Monthly Trends .....	3
2. Annual 5-year Trends .....	4
<b>C. SEA LANDINGS BY FISHING METHOD</b>	
1. Annual Monthly Trends .....	5
2. Annual 5-year Trends .....	6
<b>D. SEA LANDINGS BY PORT</b>	
1. Annual Monthly Trends .....	7
2. Annual 5-year Trends .....	8
<b>II. APPENDICES</b>	
A. Sea Landings by Species .....	9
B. Pond Harvest by Species .....	10
C. Total Commercial Marine Landings .....	10
D. Sea Landings by Fishing Method .....	11
E. Sea Landings by Island .....	11
F. Sea Landings by Area Fished .....	11
G. FAD Catches by Island and Species .....	12
H. FAD Catches by Island, FAD and Fishing Trip Count .....	14

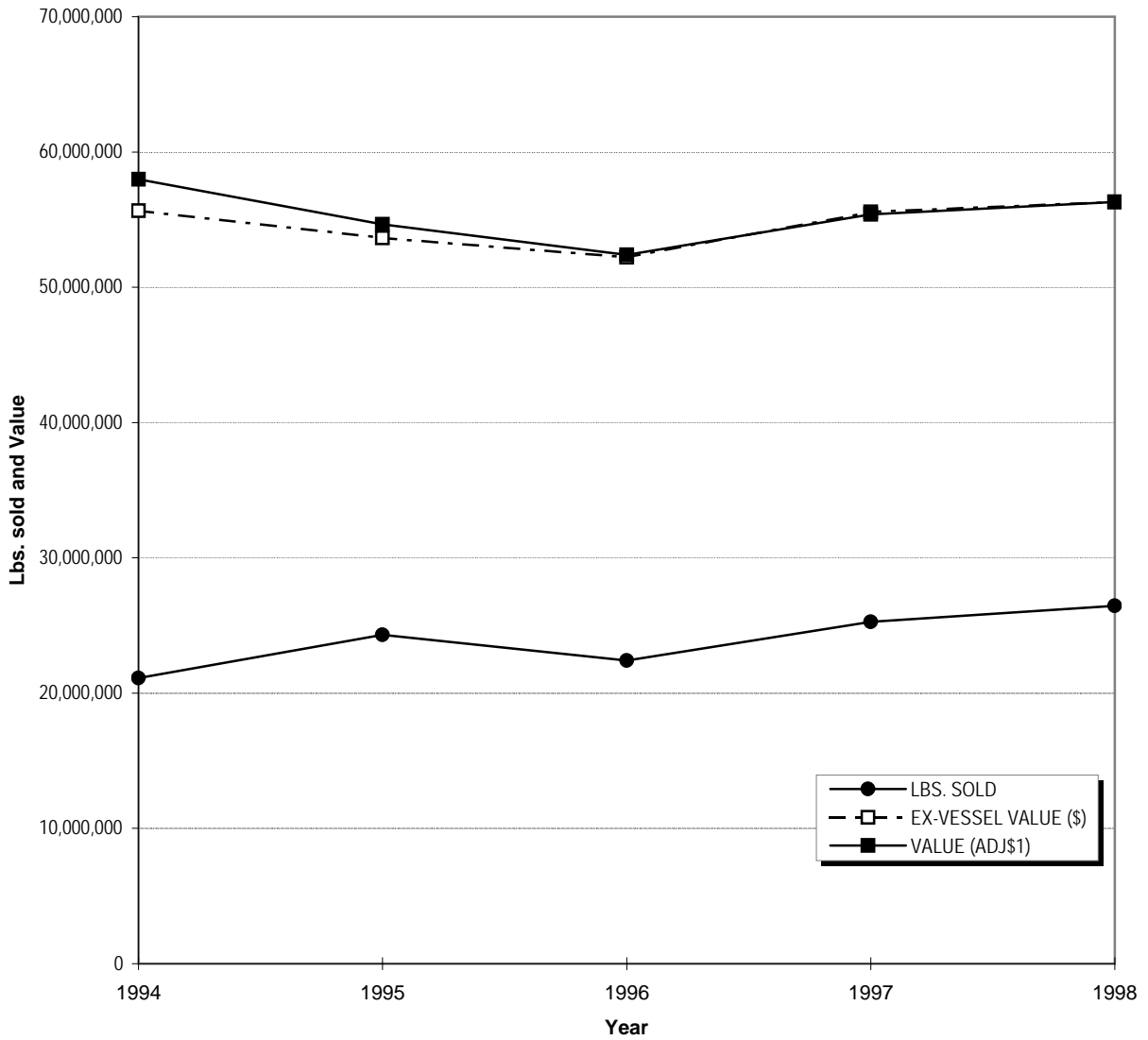
**CHART A.1  
TOTAL SEA LANDINGS ANNUAL MONTHLY TRENDS, 1998**



<b>MONTH</b>	<b>LBS. SOLD</b>	<b>EX-VESSEL VALUE(\$)</b>
<i>Jan</i>	1,803,456	5,075,835
<i>Feb</i>	1,876,974	4,669,408
<i>Mar</i>	2,676,346	6,403,298
<i>Apr</i>	2,595,027	5,864,429
<i>May</i>	2,387,836	4,839,074
<i>Jun</i>	2,771,885	4,799,090
<i>Jul</i>	2,263,437	3,985,831
<i>Aug</i>	1,916,853	4,217,180
<i>Sep</i>	1,829,063	3,899,514
<i>Oct</i>	1,866,444	3,469,113
<i>Nov</i>	2,153,796	3,950,895
<i>Dec</i>	2,319,065	5,123,088
<b>TOTAL</b>	<b>26,460,182</b>	<b>56,296,754</b>

Note: Data incomplete due to late submission and processing of fish catch records.

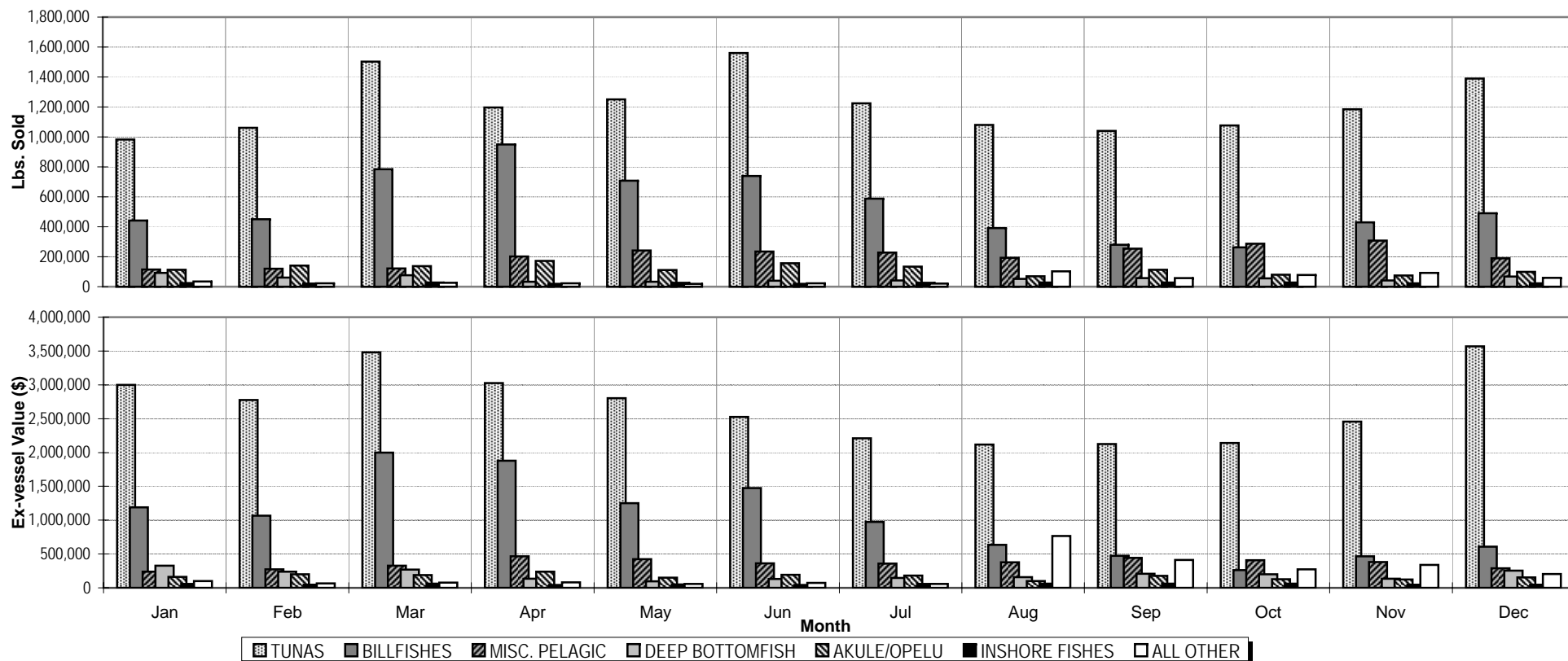
**CHART A.2  
TOTAL SEA LANDINGS ANNUAL 5 - YEAR TRENDS, 1994 - 1998**



<b>YEAR</b>	<b>LBS. SOLD</b>	<b>EX-VESSEL VALUE (\$)</b>	<b>HCPI<sup>1</sup></b>	<b>VALUE (ADJ\$<sup>1</sup>)</b>
<b>1994</b>	21,114,027	55,649,443	164.7	57,980,841
<b>1995</b>	24,309,882	53,638,118	168.4	54,657,370
<b>1996</b>	22,400,361	52,210,294	171.0	52,393,488
<b>1997</b>	25,273,203	55,571,923	172.2	55,378,293
<b>1998</b>	26,460,182	56,296,754	171.6	56,296,754

<sup>1</sup> Honolulu Consumer Price Index (all wage earners)

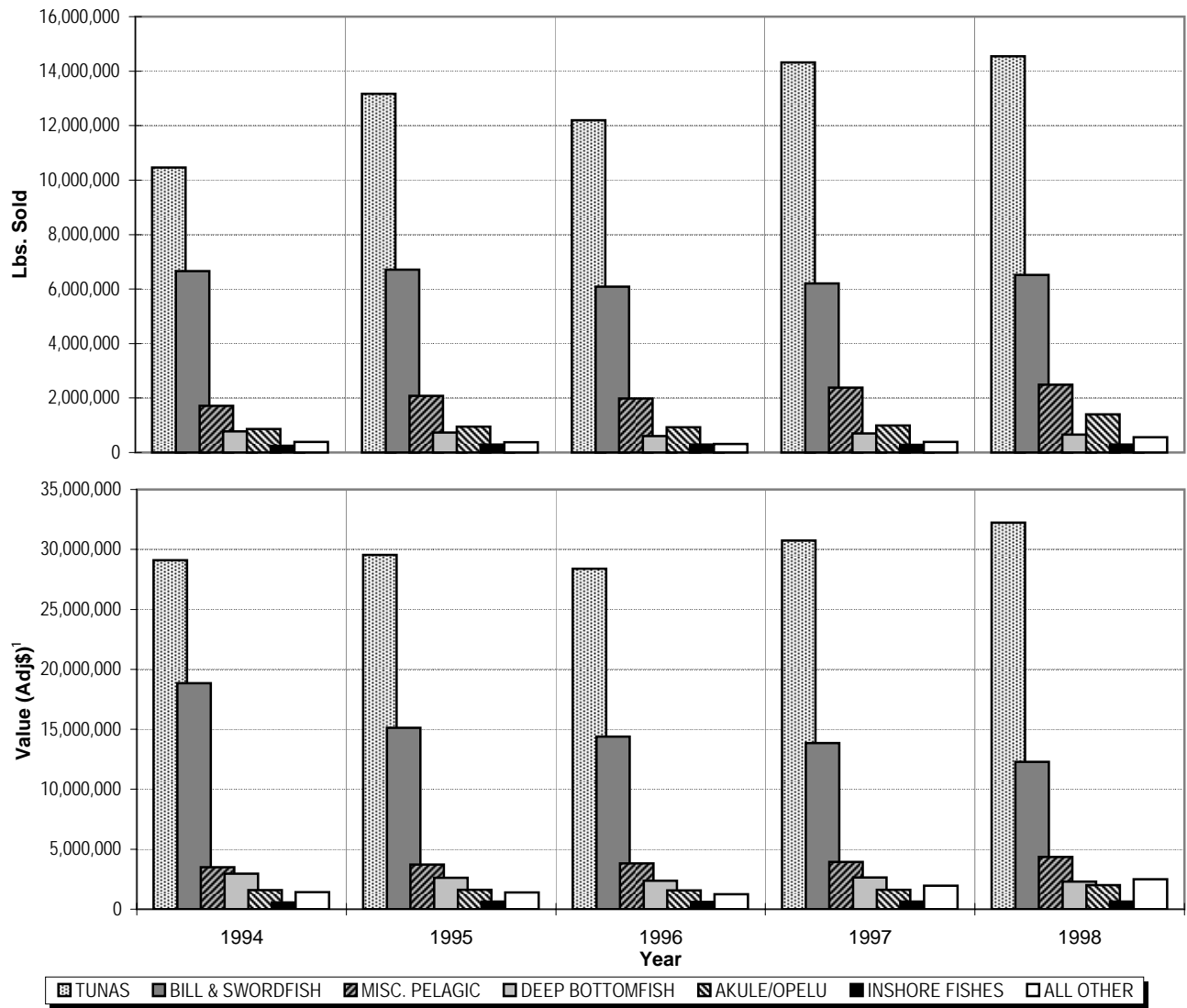
**CHART B.1  
SEA LANDINGS BY SPECIES GROUP ANNUAL MONTHLY TRENDS, 1998**



Calendar Year 1998		MONTH												YEAR
SPECIES GROUP		Jan	Feb	Mar	Apr	May	Jun	Jul	Aug	Sep	Oct	Nov	Dec	TOTAL
TUNA	Lbs. Sold	982,391	1,061,235	1,501,873	1,196,884	1,250,426	1,560,482	1,224,742	1,080,322	1,039,470	1,076,356	1,184,209	1,389,131	14,547,521
	Ex-vessel Value (\$)	3,000,345	2,777,075	3,480,058	3,026,155	2,804,311	2,525,536	2,211,653	2,116,679	2,125,078	2,139,725	2,457,946	3,568,438	32,233,000
BILLFISH	Lbs. Sold	441,928	451,214	785,030	950,304	708,379	739,406	588,298	390,988	280,770	262,051	429,663	490,896	6,518,927
	Ex-vessel Value(\$)	1,190,386	1,064,994	1,997,942	1,879,687	1,252,847	1,473,879	972,887	633,330	474,567	263,066	466,271	608,633	12,278,488
MISC. PELAGIC	Lbs. Sold	114,664	120,054	121,754	201,281	241,155	234,673	227,758	193,831	253,102	286,628	307,972	189,898	2,492,770
	Ex-vessel Value(\$)	239,928	271,689	328,653	463,926	424,884	361,699	358,982	376,141	444,377	408,074	382,449	287,804	4,348,605
DEEP BOTTOMFISH	Lbs. Sold	91,345	60,961	76,400	33,581	32,668	39,492	42,027	52,801	57,009	56,382	42,235	68,489	653,390
	Ex-vessel Value (\$)	326,707	239,807	269,186	134,331	97,497	130,756	147,164	159,580	206,289	199,085	135,667	252,799	2,298,869
AKULE/OPELU	Lbs. Sold	113,873	140,144	136,588	171,975	110,525	156,048	133,261	69,230	113,543	79,302	75,044	99,189	1,398,722
	Ex-vessel Value (\$)	163,072	200,757	187,766	240,170	149,091	193,732	179,104	101,295	176,100	126,236	122,783	155,509	1,995,616
INSHORE FISH	Lbs. Sold	24,007	21,543	28,664	18,475	25,839	19,235	26,447	27,746	27,834	27,719	22,042	22,442	291,993
	Ex-vessel Value (\$)	56,156	47,828	62,937	40,538	51,675	41,178	58,988	62,794	62,515	60,323	48,040	47,614	640,588
ALL OTHER	Lbs. Sold	35,248	21,823	26,037	22,527	18,844	22,549	20,904	101,935	57,335	78,006	92,631	59,020	556,859
	Ex-vessel Value (\$)	99,242	67,260	76,756	79,623	58,768	72,309	57,051	767,362	410,587	272,603	337,738	202,290	2,501,590
TOTAL	Lbs. Sold	1,803,456	1,876,974	2,676,346	2,595,027	2,387,836	2,771,885	2,263,437	1,916,853	1,829,063	1,866,444	2,153,796	2,319,065	26,460,182
	Ex-vessel Value (\$)	5,075,835	4,669,408	6,403,298	5,864,429	4,839,074	4,799,090	3,985,831	4,217,180	3,899,514	3,469,113	3,950,895	5,123,088	56,296,754

Note: Data incomplete due to late submission and processing of fish catch records.

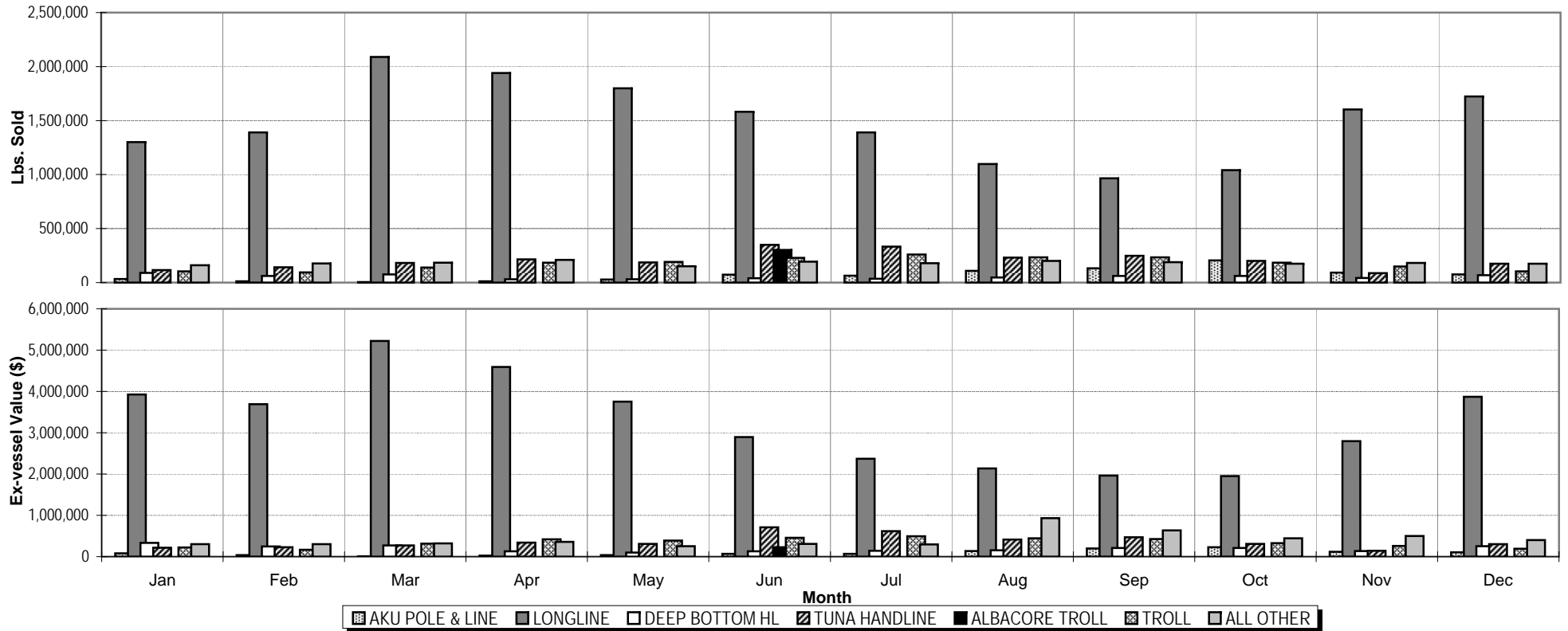
**CHART B.2  
SEA LANDINGS BY SPECIES GROUPS ANNUAL 5 - YEAR TRENDS, 1994 - 1998**



Calendar Year		YEAR				
SPECIES GROUP		1994	1995	1996	1997	1998
TUNA	Lbs. Sold	10,466,103	13,167,633	12,195,306	14,317,844	14,547,521
	Value (Adj\$)¹	29,101,797	29,537,496	28,402,239	30,731,628	32,233,000
BILL & SWORDFISH	Lbs. Sold	6,659,186	6,714,425	6,084,519	6,202,269	6,518,927
	Value (Adj\$)¹	18,853,213	15,130,735	14,381,274	13,842,159	12,278,488
MISC. PELAGIC	Lbs. Sold	1,716,476	2,079,479	1,987,146	2,383,712	2,492,770
	Value (Adj\$)¹	3,490,142	3,709,737	3,807,800	3,934,815	4,348,605
DEEP BOTTOMFISH	Lbs. Sold	771,678	737,685	603,447	704,655	653,390
	Value (Adj\$)¹	2,968,417	2,616,918	2,382,533	2,641,142	2,298,869
AKULE/OPELU	Lbs. Sold	861,834	942,989	931,780	992,488	1,398,722
	Value (Adj\$)¹	1,581,862	1,620,557	1,575,744	1,618,698	1,995,616
INSHORE FISH	Lbs. Sold	251,860	295,479	290,777	280,296	291,993
	Value (Adj\$)¹	558,408	641,801	606,177	646,867	640,588
ALL OTHER	Lbs. Sold	386,890	372,192	307,386	391,939	556,859
	Value (Adj\$)¹	1,427,002	1,400,125	1,237,722	1,962,984	2,501,590
TOTAL	Lbs. Sold	21,114,027	24,309,882	22,400,361	25,273,203	26,460,182
	Value (Adj\$)¹	57,980,841	54,657,370	52,393,488	55,378,293	56,296,754

¹ Honolulu Consumer Price Index (all wage earners)

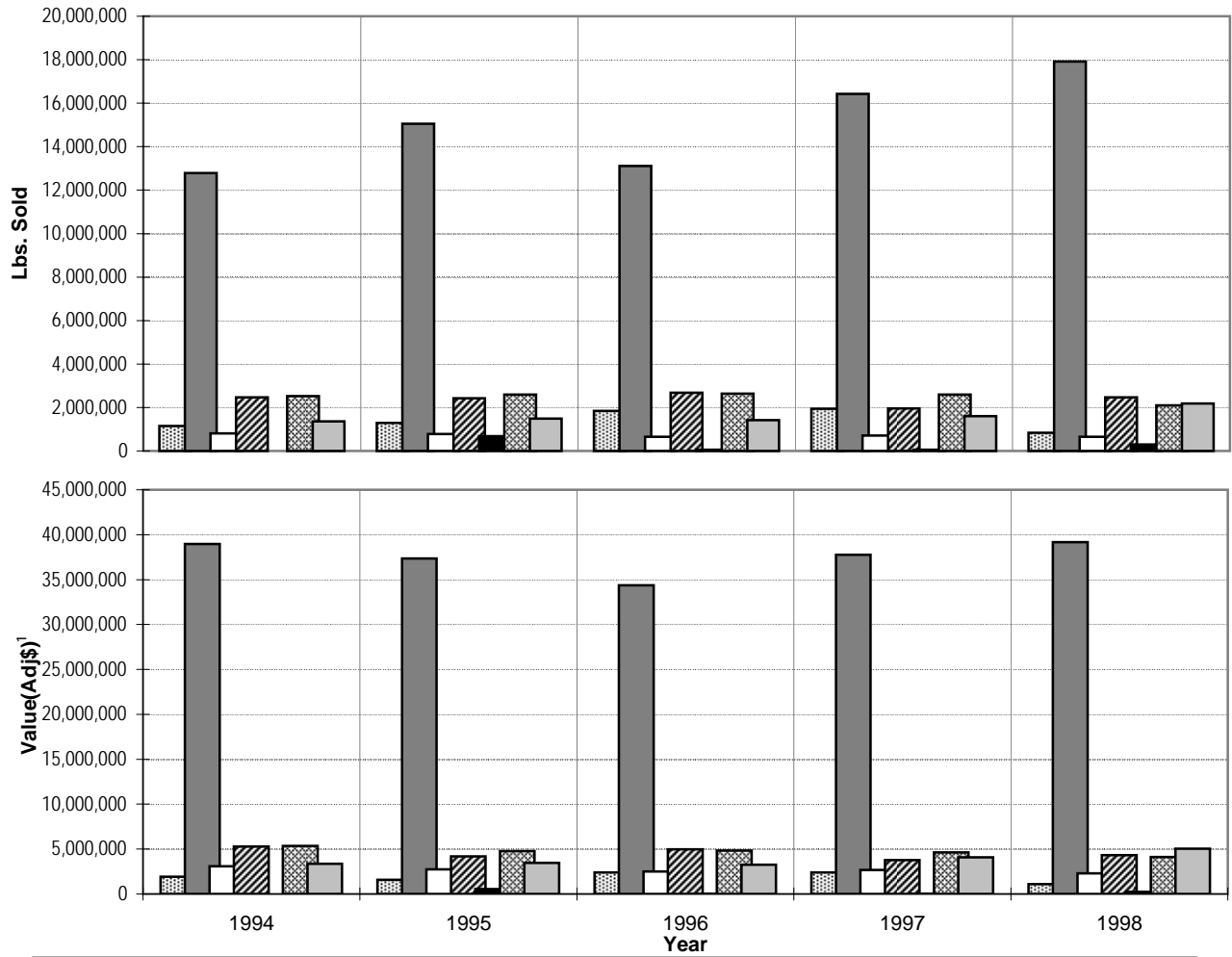
**CHART C.1  
SEA LANDINGS BY FISHING METHOD ANNUAL MONTHLY TRENDS, 1998**



<b>Calendar Year 1998</b>		<b>MONTH</b>												<b>YEAR TOTAL</b>
<b>METHOD</b>		<b>Jan</b>	<b>Feb</b>	<b>Mar</b>	<b>Apr</b>	<b>May</b>	<b>Jun</b>	<b>Jul</b>	<b>Aug</b>	<b>Sep</b>	<b>Oct</b>	<b>Nov</b>	<b>Dec</b>	
AKU POLE & LINE	<i>Lbs. Sold</i>	32,908	12,682	3,946	12,667	29,424	73,507	64,052	108,752	131,488	205,205	91,051	76,403	<b>842,085</b>
	<i>Ex-vessel Value (\$)</i>	79,806	35,087	9,227	22,391	39,549	67,717	66,566	137,279	195,709	226,084	120,013	106,996	<b>1,106,425</b>
LONGLINE	<i>Lbs. Sold</i>	1,299,593	1,391,223	2,089,883	1,939,951	1,799,767	1,581,855	1,390,212	1,097,843	966,495	1,040,456	1,602,561	1,723,180	<b>17,923,019</b>
	<i>Ex-vessel Value (\$)</i>	3,928,613	3,688,776	5,222,553	4,594,549	3,750,915	2,897,041	2,368,931	2,135,418	1,960,568	1,951,634	2,794,081	3,870,439	<b>39,163,519</b>
DEEP BOTTOM HL	<i>Lbs. Sold</i>	90,689	60,256	76,664	31,013	31,245	39,681	36,157	47,098	61,112	61,026	43,071	67,305	<b>645,317</b>
	<i>Ex-vessel Value (\$)</i>	334,144	245,136	268,734	132,195	97,172	128,806	142,105	153,653	212,490	207,171	137,630	252,708	<b>2,311,945</b>
TUNA HANDLINE	<i>Lbs. Sold</i>	115,404	141,276	182,609	215,430	185,494	350,448	333,853	230,455	248,104	201,087	86,612	174,231	<b>2,465,003</b>
	<i>Ex-vessel Value (\$)</i>	213,475	229,438	272,002	337,033	306,505	712,575	616,274	416,371	466,614	310,885	140,095	300,815	<b>4,322,082</b>
ALBACORE TROLL	<i>Lbs. Sold</i>	0	0	0	0	0	303,214	0	0	0	0	0	0	<b>303,214</b>
	<i>Ex-vessel Value (\$)</i>	0	0	0	0	0	225,960	0	0	0	0	0	0	<b>225,960</b>
TROLL	<i>Lbs. Sold</i>	104,601	93,831	138,147	185,085	190,737	229,550	258,900	232,936	233,213	185,106	148,234	103,788	<b>2,104,128</b>
	<i>Ex-vessel Value (\$)</i>	219,950	165,484	312,483	422,485	390,144	458,134	494,410	443,281	428,211	327,829	256,394	192,278	<b>4,111,083</b>
ALL OTHER	<i>Lbs. Sold</i>	160,261	177,706	185,097	210,881	151,169	193,630	180,263	199,769	188,651	173,564	182,267	174,158	<b>2,177,416</b>
	<i>Ex-vessel Value (\$)</i>	299,848	305,487	318,299	355,776	254,789	308,857	297,544	931,180	635,920	445,509	502,682	399,851	<b>5,055,741</b>
<b>TOTAL</b>	<i>Lbs. Sold</i>	<b>1,803,456</b>	<b>1,876,974</b>	<b>2,676,346</b>	<b>2,595,027</b>	<b>2,387,836</b>	<b>2,771,885</b>	<b>2,263,437</b>	<b>1,916,853</b>	<b>1,829,063</b>	<b>1,866,444</b>	<b>2,153,796</b>	<b>2,319,065</b>	<b>26,460,182</b>
	<i>Ex-vessel Value (\$)</i>	<b>5,075,835</b>	<b>4,669,408</b>	<b>6,403,298</b>	<b>5,864,429</b>	<b>4,839,074</b>	<b>4,799,090</b>	<b>3,985,831</b>	<b>4,217,180</b>	<b>3,899,514</b>	<b>3,469,113</b>	<b>3,950,895</b>	<b>5,123,088</b>	<b>56,296,754</b>

Note: Data incomplete due to late submission and processing of fish catch records.

**CHART C.2  
SEA LANDINGS FISHING METHOD ANNUAL 5 - YEAR TRENDS, 1994 - 1998**



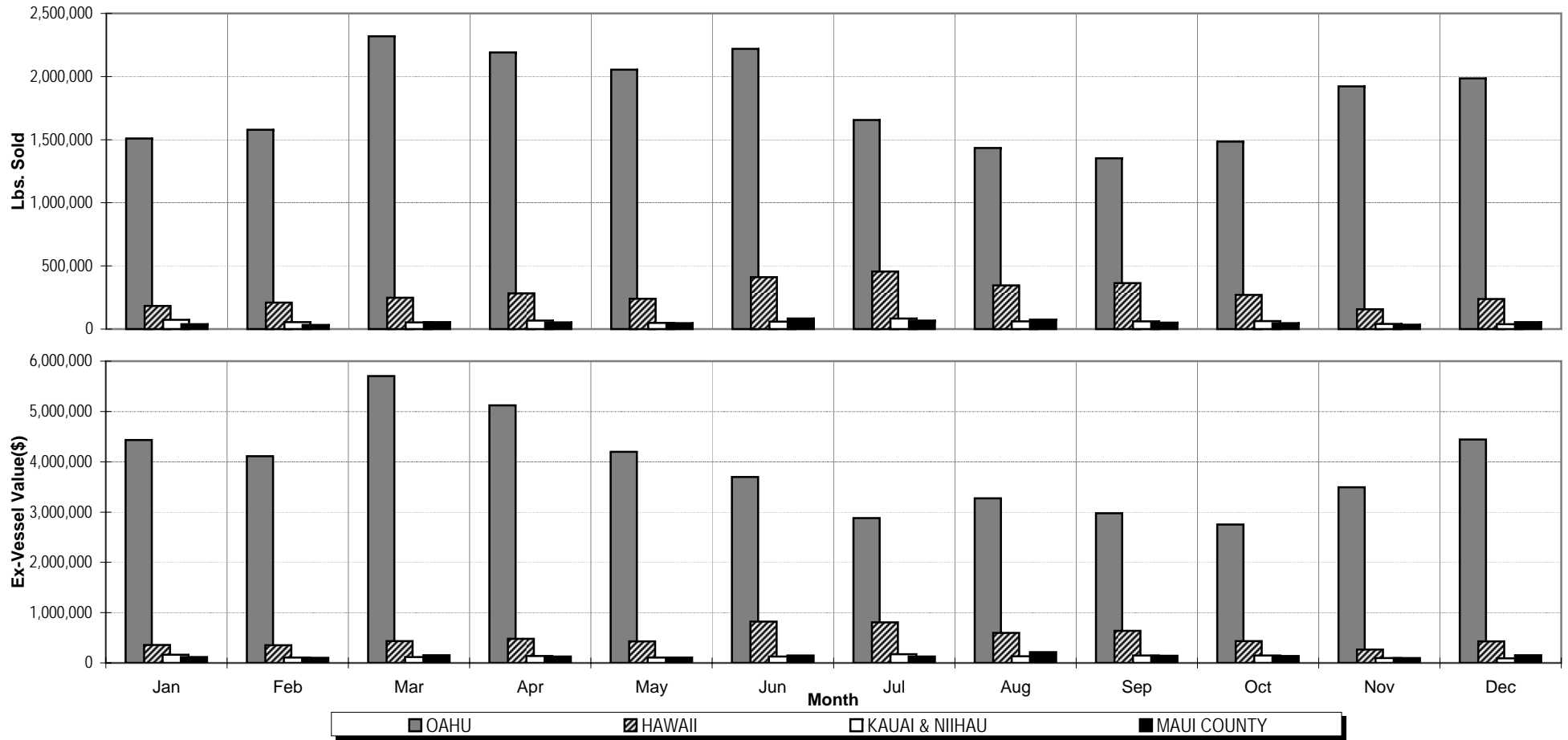
AKU POLE & LINE  
  LONGLINE  
  DEEP BOTTOM HL  
  TUNA HANDLINE  
  ALBACORE  
  TROLLING  
  ALL OTHER

Calendar Year 1998		YEAR				
FISHING METHOD		1994	1995	1996	1997	1998
AKU POLE & LINE	<i>Lbs. Sold</i>	1,154,463	1,290,663	1,839,376	1,937,321	842,085
	<i>Value (Adj\$) <sup>1</sup></i>	1,911,678	1,579,081	2,396,901	2,384,901	1,106,425
LONGLINE	<i>Lbs. Sold</i>	12,785,022	15,054,409	13,112,692	16,427,269	17,923,019
	<i>Value (Adj\$) <sup>1</sup></i>	38,976,544	37,342,272	34,379,928	37,769,915	39,163,519
DEEP BOTTOM HL	<i>Lbs. Sold</i>	813,231	775,930	657,613	712,390	645,317
	<i>Value (Adj\$) <sup>1</sup></i>	3,081,798	2,730,999	2,507,163	2,681,191	2,311,945
TUNA HANDLINE	<i>Lbs. Sold</i>	2,468,598	2,417,788	2,677,846	1,953,129	2,465,003
	<i>Value (Adj\$) <sup>1</sup></i>	5,295,979	4,186,712	4,980,501	3,763,107	4,322,082
ALBACORE	<i>Lbs. Sold</i>	0	685,386	62,004	50,199	303,214
	<i>Value (Adj\$) <sup>1</sup></i>	0	565,435	49,777	39,861	225,960
TROLLING	<i>Lbs. Sold</i>	2,529,544	2,592,193	2,629,935	2,597,757	2,104,128
	<i>Value (Adj\$) <sup>1</sup></i>	5,358,727	4,783,796	4,835,727	4,646,753	4,111,083
ALL OTHER	<i>Lbs. Sold</i>	1,363,169	1,493,513	1,420,895	1,595,138	2,177,416
	<i>Value (Adj\$) <sup>1</sup></i>	3,356,116	3,469,074	3,243,491	4,092,565	5,055,741
TOTAL	<i>Lbs. Sold</i>	<b>21,114,027</b>	<b>24,309,882</b>	<b>22,400,361</b>	<b>25,273,203</b>	<b>26,460,182</b>
	<i>Value (Adj\$) <sup>1</sup></i>	<b>57,980,841</b>	<b>54,657,370</b>	<b>52,393,488</b>	<b>55,378,293</b>	<b>56,296,754</b>

<sup>1</sup> Honolulu Consumer Price Index (all wage earners)



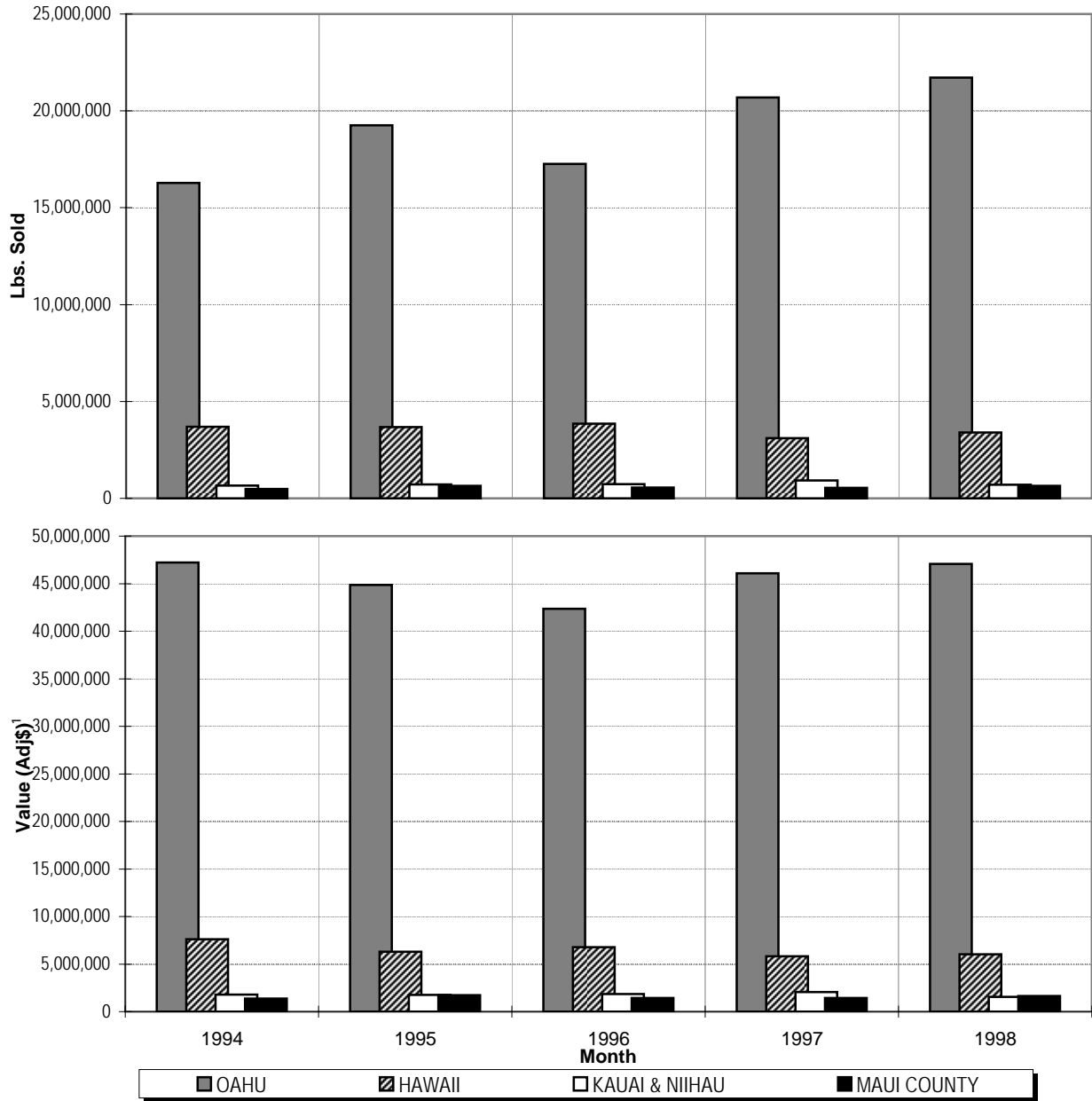
**CHART D.1  
SEA LANDINGS BY PORT ANNUAL MONTHLY TRENDS. 1998**



Calendar Year 1998		1998												TOTAL
PORT		Jan	Feb	Mar	Apr	May	Jun	Jul	Aug	Sep	Oct	Nov	Dec	
OAHU	Lbs. Sold	1,509,942	1,578,754	2,319,789	2,191,236	2,054,159	2,219,909	1,656,585	1,433,906	1,353,444	1,485,837	1,922,679	1,986,278	21,712,518
	Ex-vessel Value	4,433,647	4,108,282	5,702,509	5,121,692	4,196,840	3,698,969	2,878,421	3,274,009	2,975,404	2,752,549	3,491,580	4,444,491	47,078,394
HAWAII	Lbs. Sold	182,767	210,337	248,341	283,698	239,312	410,068	455,339	345,907	363,224	270,501	157,223	237,863	3,404,580
	Ex-vessel Value	358,657	351,640	432,559	478,477	427,653	822,751	806,363	595,170	636,335	433,598	267,908	430,740	6,041,852
KAUAI & NIIHAU	Lbs. Sold	73,101	54,995	52,885	66,723	48,074	59,383	83,537	61,799	61,348	63,811	40,045	39,298	704,999
	Ex-vessel Value	164,102	108,078	117,209	138,118	105,612	128,215	171,935	134,511	146,700	146,114	95,473	92,810	1,548,877
MAUI COUNTY	Lbs. Sold	37,646	32,888	55,331	53,370	46,291	82,525	67,976	75,241	51,047	46,295	33,849	55,626	638,085
	Ex-vessel Value	119,429	101,408	151,021	126,142	108,969	149,154	129,112	213,490	141,075	136,852	95,934	155,047	1,627,632
TOTAL	Lbs. Sold	1,803,456	1,876,974	2,676,346	2,595,027	2,387,836	2,771,885	2,263,437	1,916,853	1,829,063	1,866,444	2,153,796	2,319,065	26,460,182
	Ex-vessel Value	5,075,835	4,669,408	6,403,298	5,864,429	4,839,074	4,799,090	3,985,831	4,217,180	3,899,514	3,469,113	3,950,895	5,123,088	56,296,754

Note: Data incomplete due to late submission and processing of fish catch records.

**CHART D.2  
SEA LANDINGS BY PORT ANNUAL 5-YEAR TRENDS, 1994 - 1998**



Calendar Year		YEAR				
PORT		1994	1995	1996	1997	1998
OAHU	Lbs. Sold	16,278,084	19,258,413	17,255,874	20,697,816	21,712,518
	Value (Adj\$)¹	47,221,058	44,859,514	42,348,911	46,094,619	47,078,394
HAWAII	Lbs. Sold	3,688,803	3,677,749	3,856,572	3,100,303	3,404,580
	Value (Adj\$)¹	7,606,687	6,284,647	6,768,780	5,808,275	6,041,852
KAUAI & NIIHAU	Lbs. Sold	660,621	722,434	732,898	928,371	704,999
	Value (Adj\$)¹	1,787,318	1,768,275	1,837,185	2,046,700	1,548,877
MAUI COUNTY	Lbs. Sold	486,519	651,286	555,017	546,713	638,085
	Value (Adj\$)¹	1,365,778	1,744,933	1,438,613	1,428,699	1,627,632
TOTAL	Lbs. Sold	21,114,027	24,309,882	22,400,361	25,273,203	26,460,182
	Value (Adj\$)¹	57,980,841	54,657,370	52,393,488	55,378,293	56,296,754

¹ Honolulu Consumer Price Index (all wage earners)

**APPENDIX**  
**Statistical Tables**  
**Calendar 1998**

**Appendix A - Sea Landings by Species**

SPECIES	LBS. LANDED	LBS. SOLD	VALUE(\$)	SPECIES	LBS. LANDED	LBS. SOLD	VALUE(\$)
<b>TUNAS</b>				<b>JACKS</b>			
Aku	1,283,141	1,175,647	1,538,607	Butaguchi	40,522	37,953	53,643
Tombo	2,844,357	2,806,885	3,405,951	Dobe	4,118	4,118	6,903
Bigeye	6,992,200	6,942,469	19,191,178	Gunkan	747	717	1,073
Bluefin	12,677	12,677	96,897	Kamanu	3,394	2,727	3,836
Kawakawa	10,472	7,173	8,608	Kihikihi	999	802	1,798
Yellowfin	3,743,046	3,596,560	7,978,131	Menpachi (sasa)	297	278	345
Miscellaneous	6,742	6,110	13,628	Omaka	237	220	743
<b>SUBTOTAL</b>	<b>14,892,635</b>	<b>14,547,521</b>	<b>32,233,000</b>	Omilu	1,737	1,125	2,139
<b>BILLFISHES &amp; SWORDFISH</b>				Papa	3,878	3,438	6,923
Black marlin	10,473	10,173	12,201	White	9,280	8,614	12,291
Blue marlin	1,004,297	935,369	1,039,632	Ulua/papio (misc.)	39,770	31,020	62,010
Saifish	16,994	16,349	13,723	<b>SUBTOTAL</b>	<b>104,979</b>	<b>91,012</b>	<b>151,703</b>
Shortbill spearfish	302,855	283,309	196,690	<b>INSHORE FISHES</b>			
Striped marlin	960,729	947,119	1,129,685	<i>Parrotfishes</i>			
Swordfish	4,335,945	4,325,696	9,884,958	Panuhunu	911	869	2,328
Miscellaneous	987	912	1,599	Panunu	31	15	32
<b>SUBTOTAL</b>	<b>6,632,280</b>	<b>6,518,927</b>	<b>12,278,488</b>	Uhu	34,863	32,511	74,816
<b>MISC. PELAGIC FISHES</b>				<i>Goatfishes</i>			
Kaku	17,350	16,254	13,041	Kumu	5,351	4,916	32,653
Keokeo	44	20	25	Malu	197	166	518
Mahimahi	797,278	731,946	1,677,896	Moano	4,589	3,632	12,388
Malolo	18	18	37	Moana kali	2,634	2,254	15,848
Mola mola	436	10	1	Munu	443	421	2,932
Monchong	230,718	229,688	330,252	Weke	40,341	38,210	67,666
Ono	740,063	674,077	1,453,745	Weke ula	28,878	25,771	79,995
Opah	842,155	840,475	873,280	<i>Surgeonfishes</i>			
Walu	3,906	282	328	Kala	15,244	13,844	15,795
<b>SUBTOTAL</b>	<b>2,631,968</b>	<b>2,492,770</b>	<b>4,348,605</b>	Kole	2,260	1,568	3,082
<b>DEEP BOTTOMFISHES</b>				Maiko	3,729	3,707	2,307
Alfonsin	86	59	174	Manini	13,317	12,700	27,973
Armor Head	12	0	0	Naenae	7,199	7,079	6,343
Ehu	40,976	38,000	137,407	Opelu kala	9,176	8,894	9,535
Golden kale	126	109	225	Pakuikui	763	739	1,811
Hapuupuu	81,081	78,043	198,197	Palani	35,297	34,618	42,894
Hogo	2,954	2,524	10,502	Pualu	8,912	8,736	11,051
Kahala	22,285	2,708	2,387	<i>Damselfishes</i>			
Kalekale	25,213	22,893	63,173	Kupipi	153	150	192
Lehi	8,697	8,196	25,105	Maomao	1,593	1,568	2,982
Opakapaka	226,728	216,289	959,352	<i>Squirrelfishes</i>			
Randall Snapper	8	0	0	Alaihi	169	163	367
Taape	74,946	67,331	66,491	Uu	42,312	39,647	122,320
Ukikiki (gindai)	8,460	7,724	20,395	Uukanipo	110	102	232
Uku	118,193	111,049	313,031	<i>Wrasses</i>			
Ulaula (onaga)	104,212	98,465	502,429	Aawa	2,524	2,179	2,324
Yellowtail Kale	25	0	0	Ea	206	202	206
<b>SUBTOTAL</b>	<b>714,002</b>	<b>653,390</b>	<b>2,298,869</b>	Hilu	28	28	24
<b>AKULE/OPELU</b>				Hinalea	250	237	191
Akule	1,272,485	1,140,605	1,566,611	Kupoupou	11	7	15
Hahalalu	38,716	36,413	52,983	Laenihi	5,057	3,708	18,809
Opelu	234,376	221,678	375,971	Poou	27	19	24
Opelu Mama	32	26	51	<i>Miscellaneous Inshore Fishes</i>			
<b>SUBTOTAL</b>	<b>1,545,609</b>	<b>1,398,722</b>	<b>1,995,616</b>	Ahaaha	191	168	178
				Aholehole	3,309	2,447	7,430
				Amaama	3,579	3,189	8,771
				Awa	1,375	1,152	1,284

Note: Data incomplete due to late submission and processing of fish catch records.

<b>SPECIES</b>	<b>LBS. LANDED</b>	<b>LBS. SOLD</b>	<b>VALUE(\$)</b>
<b>INSHORE FISHES(cont.)</b>			
<i>Miscellaneous Inshore Fishes (cont.)</i>			
Awaawa	139	97	114
Aweoweo	4,697	3,903	9,774
Humuhumu	115	0	0
Kawelea	3,042	2,773	4,288
Lae	733	641	1,134
Makiawa	4	2	4
Moi	1,841	978	4,469
Mu	2,227	2,021	4,974
Nenue	15,503	13,330	14,978
Nohu	718	617	1,708
Nunu	80	79	75
Oililepa	2,105	2,072	4,026
Oio	5,470	4,413	4,737
Pakii	52	43	23
Poopaa	1,032	1,007	2,233
Puhi (white)	215	75	88
Puhi (misc.)	270	270	207
Roi	346	201	430
Summer Mullet	89	83	207
Tilapia	21	21	10
Toau	3,294	3,058	10,285
Uouoa	541	537	1,316
Upapalu	11	1	1
Wahanui	268	155	192
<b>SUBTOTAL</b>	<b>317,842</b>	<b>291,993</b>	<b>640,588</b>
<b>SHARKS</b>			
Mako	66,591	59,695	57,399
Mano kihikihi	1,300	0	0
Thresher	22,074	14,799	10,786
Tiger	5,400	0	0
Miscellaneous	108,445	15,369	35,471
<b>SUBTOTAL</b>	<b>203,810</b>	<b>89,863</b>	<b>103,656</b>
<b>LOBSTERS</b>			
Ula (spiny)	54,625	52,150	641,359
Ula (slipper)	57,160	56,965	457,976
<b>SUBTOTAL</b>	<b>111,785</b>	<b>109,115</b>	<b>1,099,335</b>
<b>CRABS</b>			
Aama	567	566	3,801
Kona	31,163	25,968	119,700
Kuahonu	22,054	21,901	71,939
Moala	20	7	11
Samoaan	35	8	39
Crab (misc.)	84	59	196
<b>SUBTOTAL</b>	<b>53,923</b>	<b>48,509</b>	<b>195,685</b>
<b>SHRIMP</b>			
Ensifer	1,521	1,214	3,642
Laevigatus	180,391	175,110	769,775
<b>SUBTOTAL</b>	<b>181,912</b>	<b>176,324</b>	<b>773,417</b>

<b>SPECIES</b>	<b>LBS. LANDED</b>	<b>LBS. SOLD</b>	<b>VALUE(\$)</b>
<b>OTHER ANIMALS</b>			
Hee (octopus)	21,937	14,419	41,625
Muhee (squid)	2,466	2,024	4,491
Opihi	13,936	12,103	54,405
Pupu	16	6	22
<b>SUBTOTAL</b>	<b>38,355</b>	<b>28,552</b>	<b>100,543</b>
<b>SEAWEEDS</b>			
Limu kohu	2,605	2,339	19,868
Limu manauea	394	394	1,182
Limu ogo	1,252	816	2,099
Limu wawaeiole	870	790	792
Miscellaneous	887	527	3,664
<b>SUBTOTAL</b>	<b>6,008</b>	<b>4,866</b>	<b>27,604</b>
Miscellaneous <sup>4</sup>	9,673	8,618	49,647
<b>TOTAL</b>	<b>27,444,781</b>	<b>26,460,182</b>	<b>56,296,754</b>

**Appendix B - Pond Harvest by species**

<b>SPECIES</b>	<b>LBS. LANDED</b>	<b>LBS. SOLD</b>	<b>VALUE(\$)</b>
Ahaaha	3	3	4
Aholehole	426	426	1,914
Amaama	139	139	592
Awa	37	37	56
Awaawa	324	324	423
Kaku	640	640	2,837
Lae	71	71	68
Moi	3	3	17
Oio	3,685	3,685	4,523
Ulua/papio (misc.)	809	809	1,801
Pualu	189	189	280
Summer mullet	90	90	255
Tilapia	224	224	536
Toau	331	331	1,232
Weke	3	3	3
Samoaan crab	200	200	974
Crab (misc.)	3	3	5
Miscellaneous	1,191	1,191	3,686
<b>TOTAL</b>	<b>8,368</b>	<b>8,368</b>	<b>19,205</b>

**Appendix C - Total Commercial Marine Landings**

<b>SPECIES</b>	<b>LBS. LANDED</b>	<b>LBS. SOLD</b>	<b>VALUE(\$)</b>
<b>GRAND TOTAL</b>	<b>27,453,149</b>	<b>26,468,550</b>	<b>56,315,959</b>

<sup>4</sup> Certain species may have been consolidated to protect confidentiality.

**Appendix D - Sea Landings by Fishing Method**

FISHING METHOD	LBS. LANDED	LBS. SOLD	VALUE(\$)
Aku pole & line	844,655	842,085	1,106,425
Longline	18,083,267	17,923,019	39,163,519
Deepbottom handline	701,433	645,317	2,311,945
Inshore handline	485,094	439,592	875,006
Tuna handline	2,546,676	2,465,003	4,322,082
Other handline	56,055	12,719	32,670
Trolling	2,529,206	2,104,128	4,111,083
Diving	82,567	69,765	259,143
Net	1,408,116	1,264,084	1,795,617
Trap	380,442	371,762	2,001,825
Rod & reel (casting, dunking, etc.)	2,503	1,605	4,108
Knife - (opihi & wana)	13,936	12,103	54,405
Handpick - limu	6,008	4,866	27,604
Albacore Troll	303,721	303,214	225,960
Miscellaneous	1,102	920	5,362
<b>TOTAL</b>	<b>27,444,781</b>	<b>26,460,182</b>	<b>56,296,754</b>

**Appendix E - Sea Landings by Island**

ISLAND	LBS. LANDED	LBS. SOLD	VALUE(\$)
Oahu	22,228,388	21,712,518	47,078,394
Hawaii	3,615,992	3,404,580	6,041,852
Maui	722,144	579,781	1,421,628
Kauai & Niihau	807,023	704,999	1,548,877
Molokai	47,509	41,813	169,888
Lanai	23,725	16,491	36,116
<b>STATE TOTAL</b>	<b>27,444,781</b>	<b>26,460,182</b>	<b>56,296,754</b>

**Appendix F - Sea Landings by Area Fished**

AREA (area catch code)	LBS. LANDED	LBS. SOLD	VALUE(\$)
<b>Main Hawaiian Islands (refer to Fisheries Chart No. 1)</b>			
Kaula (508,528)	74,598	73,956	174,826
Kaulakahi Channel (521,525)	73,098	63,669	192,240
Niihau (505-506,526,527)	135,028	125,797	290,520
Makahuena Pt. - Kekaha (500,520)	585,763	503,969	900,470
Barking Sands - Na Pali Coast (501-502,522)	20,768	15,909	29,432
Hanalei - Moloa'a Bay (503,523)	112,666	86,558	144,611
Anahola - Nawiliwili (504,524)	195,527	171,061	336,895
Sand Is. - Ala Wai (400,420)	86,261	79,509	131,968
Pearl Harbor - Barbers Pt. (401,421)	304,471	275,922	409,344
Barbers Pt. - Kaena Pt. (402-403,422-423)	821,082	722,394	1,171,933
Kaena Pt. - Kahuku (404-405,424-425)	397,871	378,698	819,738
Laie Pt. - Kahana Bay (406-426)	109,539	104,427	190,790
Kaneohe Bay (407,427)	140,989	131,871	282,997
Kailua Bay - Makapuu Pt. (408,428)	78,767	74,175	208,006
Makapuu Pt. - Diamond Head (409)	31,630	30,475	50,563
Kawai (Molokai) Channel (332,429)	128,893	124,897	209,696

**Appendix F - Sea Landings by Area Fished (cont.)**

AREA (area catch code)	LBS. LANDED	LBS. SOLD	VALUE(\$)
Penguin Bank (331)	114,568	106,088	397,857
Kealaikahiki Channel (327)	33,176	25,555	94,252
Alenuihaha Channel (324-325)	33,265	28,176	81,271
Auau, Kalohi & Pailolo Channels (321)	64,679	57,634	232,225
Alalakeiki Channel (320)	76,573	52,238	179,354
Molokai (310-314,333)	68,307	48,304	147,990
Lanai (308-309,328)	195,619	150,370	334,535
Kahoolawe (306-307,326)	20,306	12,231	34,355
Makena - Hana (304-305)	82,118	69,261	236,916
Hana - Kahului (302-303,322-323)	177,033	143,125	407,701
Honolua - Lahaina (301)	56,001	53,065	68,331
Lahaina - Makena (300)	207,193	173,161	234,445
Milolii - South Pt. (100,108,120,128)	210,723	200,754	420,798
Punaluu - Kalapana (107,127)	169,557	165,942	396,306
Kona Coast (101,121)	1,181,556	1,070,636	1,699,376
Keahole - Kawaihae (102,122)	197,878	159,366	352,752
Kohala - Hamakua Coast (103-104,123-124)	60,664	57,244	177,585
Hilo (105,125)	351,811	336,173	659,106
Puna - Kalapana (106,126)	634,234	622,517	1,443,071
Other (all other area codes from Fisheries Chart No. 1 not listed above)	1,534,166	1,517,211	3,088,867
<b>SUBTOTAL</b>	<b>8,766,378</b>	<b>8,012,338</b>	<b>16,231,123</b>
<b>Northwestern Hawaiian Islands offshore - 200 mile EEZ (refer to Fisheries Chart No. 2)</b>			
Nihoa (16223C,16123A,16222I)	12,715	12,024	38,306
Twin Bank (16323C,16223A)	12,387	11,462	31,835
Necker (16423D,16423E,16423F,16423B,16423C)	86,141	82,069	424,769
French Frigate (16623H,16623I,16623F)	13,793	12,521	31,410
Brooks Bank (16624A,16623G)	14,024	13,208	40,016
St. Rogatien (16724F,16724C)	23,306	21,646	77,737
Gardner Pinnacles (16825C,16725A,16824I,16824F,16724G,16724D)	9,649	9,458	22,670
Raita Bank (16925E)	15,664	15,097	40,387
Maro Reef (17025D, 17025E, 17025A, 17025B)	76,721	74,421	377,738
Laysan (17125G, 17125H)	6,490	6,217	15,755
North Hampton (17225E, 17225F, 17225C)	52,674	48,864	149,712
Pioneer Bank (17326B, 17326C, 17325H, 17325I)	1,016	981	4,642
Lisianski (17426C, 17326A, 17425I, 17325G)	15,415	14,559	41,735
Pearl & Hermes (17627I, 17527G)	10,522	10,001	29,781
Kure (17828E, 17828F)	39,477	36,674	91,455
Other (all other areas codes from Fisheries Chart No. 2 not listed above)	4,014,381	3,974,596	8,627,057
<b>SUBTOTAL</b>	<b>4,404,375</b>	<b>4,343,798</b>	<b>10,045,005</b>
Other areas (not in Fisheries Charts 1 & 2) (other mid-ocean and missing area fished codes)	14,274,028	14,104,046	30,020,626
<b>TOTAL</b>	<b>27,444,781</b>	<b>26,460,182</b>	<b>56,296,754</b>

Note: Data incomplete due to late submission and processing of fish catch records.

**Appendix G - FAD Catches by Island and species**

**Hawaii FADs**

<b>SPECIES</b>	<b>A</b>	<b>B</b>	<b>C</b>	<b>D</b>	<b>E</b>	<b>F</b>	<b>G</b>	<b>KH</b>	<b>OTEC</b>	<b>RN</b>	<b>QQ</b>	<b>SS</b>	<b>TT</b>	<b>UU</b>	<b>VV</b>	<b>XX</b>	<b>TOTAL</b>
Aku	0	2,640	740	46	11,936	2,111	34,180	0	354	0	1,689	327	364	148	277	2	<b>54,814</b>
Bigeye	0	397	60	0	0	29	105	114	0	0	0	0	8	0	0	0	<b>713</b>
Yellowfin	0	14,855	6,202	2,027	15,404	10,161	27,860	2,807	2,081	0	9,909	2,801	1,549	991	1,189	237	<b>98,073</b>
Tombo	0	3,548	273	311	261	18	3,887	181	0	0	60	0	68	0	0	0	<b>8,607</b>
Kawakawa	0	0	0	0	25	0	0	0	0	0	0	0	0	0	0	0	<b>25</b>
Tuna (misc.)	0	104	0	0	0	0	0	0	0	0	0	0	0	0	0	0	<b>104</b>
Blue marlin	0	5,888	4,671	0	7,158	17,949	7,759	0	4,509	0	468	0	807	736	4,827	1,242	<b>56,014</b>
Sailfish	0	0	0	0	64	30	0	0	0	0	0	0	25	0	0	0	<b>119</b>
Shortbill spearfish	0	35	417	0	0	1,491	55	34	331	0	0	0	53	77	760	31	<b>3,284</b>
Striped marlin	0	124	246	0	0	801	0	0	0	0	0	0	157	0	128	60	<b>1,516</b>
Swordfish	0	98	92	0	0	0	139	379	0	0	190	0	0	0	0	0	<b>898</b>
Kahala	0	19	0	0	0	0	0	0	0	0	0	0	0	0	0	0	<b>19</b>
Kaku	0	0	6	0	0	12	0	0	0	0	0	0	0	0	0	0	<b>18</b>
Kamanu	0	0	0	0	0	9	0	0	0	0	0	0	0	0	0	0	<b>9</b>
Mahimahi	197	1,433	556	599	2,623	2,609	5,185	257	3,786	87	442	73	933	904	823	6,367	<b>26,874</b>
Ono	0	1,205	501	310	1,964	2,349	2,060	4,235	467	30	1,533	390	312	888	885	589	<b>17,718</b>
Opelu	0	0	0	0	0	0	0	0	0	0	0	0	0	0	2,350	0	<b>2,350</b>
Mano	0	0	0	0	0	0	0	0	150	0	0	0	0	0	0	0	<b>150</b>
Miscellaneous	0	0	0	35	82	0	618	0	0	0	11	0	0	0	3,560	0	<b>4,306</b>
<b>TOTAL</b>	<b>197</b>	<b>30,346</b>	<b>13,764</b>	<b>3,328</b>	<b>39,517</b>	<b>37,569</b>	<b>81,848</b>	<b>8,007</b>	<b>11,678</b>	<b>117</b>	<b>14,302</b>	<b>3,591</b>	<b>4,276</b>	<b>3,744</b>	<b>14,799</b>	<b>8,528</b>	<b>275,611</b>

**Oahu FADs**

<b>SPECIES</b>	<b>J</b>	<b>P</b>	<b>R</b>	<b>S</b>	<b>T</b>	<b>U</b>	<b>V</b>	<b>X</b>	<b>BO</b>	<b>CO</b>	<b>HH</b>	<b>II</b>	<b>LL</b>	<b>MM</b>	<b>TOTAL</b>
Aku	14,935	80	22,881	2,058	592	472	4,447	14,830	124,670	507	1,062	3,409	8,224	3,813	<b>201,980</b>
Bigeye	0	0	8	25	0	48	0	158	0	0	6	280	0	0	<b>525</b>
Yellowfin	10,622	161	5,625	6,244	338	2,020	3,175	6,379	9,814	853	667	7,211	383	1,915	<b>55,407</b>
Tombo	0	0	0	6	0	0	7	0	0	0	0	0	0	0	<b>13</b>
Kawakawa	0	0	14	23	0	0	118	32	11	0	0	0	0	0	<b>198</b>
Tuna (misc.)	0	0	210	136	0	0	0	0	60	0	0	0	0	0	<b>406</b>
Blue marlin	2,193	985	11,239	18,316	139	0	839	1,755	3,796	217	458	1,078	1,046	548	<b>42,609</b>
Sailfish	0	0	0	0	0	0	0	0	35	0	0	0	0	51	<b>86</b>
Shortbill spearfish	408	0	103	85	30	0	58	0	719	101	75	0	0	75	<b>1,654</b>
Striped marlin	168	59	2,266	4,802	120	0	734	186	1,067	90	243	229	184	81	<b>10,229</b>
Billfish (misc.)	0	0	713	0	0	0	0	0	0	0	0	0	0	0	<b>713</b>
Kahala	0	0	0	0	0	0	0	0	0	0	4	0	0	0	<b>4</b>
Kaku	0	0	0	0	0	0	0	0	24	0	0	0	0	0	<b>24</b>
Kamanu	0	0	0	0	0	0	5	0	0	0	0	0	0	0	<b>5</b>
Mahimahi	3,491	551	1,389	1,957	2,280	1,162	708	4,239	5,762	432	1,823	1,332	2,478	5,212	<b>32,816</b>
Ono	600	11	307	457	553	154	1,317	713	1,315	53	26	309	344	836	<b>6,995</b>
Opelu	505	0	26	97	0	0	0	0	0	0	0	0	0	0	<b>628</b>
Thresher	0	0	0	119	0	0	0	0	0	0	0	0	0	0	<b>119</b>
Uku	0	0	0	0	0	0	0	0	12	0	0	0	0	0	<b>12</b>
Miscellaneous	0	0	79	0	0	0	0	0	0	0	0	0	0	0	<b>79</b>
<b>TOTAL</b>	<b>32,922</b>	<b>1,847</b>	<b>44,860</b>	<b>34,325</b>	<b>4,052</b>	<b>3,856</b>	<b>11,408</b>	<b>28,292</b>	<b>147,285</b>	<b>2,253</b>	<b>4,364</b>	<b>13,848</b>	<b>12,659</b>	<b>12,531</b>	<b>354,502</b>

Note: Data incomplete due to late submission and processing of fish catch records.

**Maui, Kahoolawe, Lanai, and Molokai FADs**

<i>SPECIES</i>	<i>I</i>	<i>K</i>	<i>M</i>	<i>N</i>	<i>O</i>	<i>Q</i>	<i>CC</i>	<i>DD</i>	<i>FF</i>	<i>HO</i>	<i>JJ</i>	<i>LA</i>	<i>MC</i>	<i>NL</i>	<i>T6</i>	<i>TOTAL</i>
Aku	1,188	3,255	690	204	0	117	1,649	2,774	40	1,675	871	170	7,177	411	1,586	<b>21,807</b>
Bigeye	0	149	0	0	0	0	195	0	0	150	191	0	760	0	94	<b>1,539</b>
Yellowfin	621	2,122	1,565	124	0	23	1,932	493	57	1,257	3,079	22	16,159	1,553	9,955	<b>38,962</b>
Kawakawa	0	14	12	0	0	0	0	144	6	0	0	5	2	0	0	<b>183</b>
Tuna (misc.)	0	329	0	0	0	0	70	52	0	0	0	0	0	0	750	<b>1,201</b>
Blue marlin	2,358	10,239	0	0	0	0	0	132	0	340	920	725	824	891	409	<b>16,838</b>
Shortbill spearfish	75	349	0	0	0	25	0	89	0	0	55	130	182	0	0	<b>905</b>
Striped marlin	173	1,262	0	80	0	0	80	218	0	170	160	0	51	0	0	<b>2,194</b>
Billfish (misc.)	75	0	0	0	0	0	0	0	0	0	0	0	0	0	0	<b>75</b>
Kaku	0	0	0	0	0	0	0	50	0	0	0	0	0	0	0	<b>50</b>
Kamanu	11	0	18	0	0	0	0	0	0	10	0	0	0	0	0	<b>39</b>
Mahimahi	2,452	3,193	1,210	1,934	56	1,711	1,281	6,538	1,625	5,366	1,707	3,018	2,256	423	1,282	<b>34,052</b>
Ono	374	751	194	242	0	790	135	2,049	327	647	353	1,051	237	21	274	<b>7,445</b>
Opelu	0	0	0	0	0	0	0	3	0	0	0	0	0	0	0	<b>3</b>
Mako	0	410	0	0	0	0	0	0	0	0	0	0	0	0	0	<b>410</b>
Mano	0	200	0	0	0	0	0	0	0	0	0	0	0	0	0	<b>200</b>
Miscellaneous	0	43	0	0	0	0	0	17	0	0	0	0	80	0	767	<b>907</b>
<b>TOTAL</b>	<b>7,327</b>	<b>22,316</b>	<b>3,689</b>	<b>2,584</b>	<b>56</b>	<b>2,666</b>	<b>5,342</b>	<b>12,559</b>	<b>2,055</b>	<b>9,615</b>	<b>7,336</b>	<b>5,121</b>	<b>27,728</b>	<b>3,299</b>	<b>15,117</b>	<b>126,810</b>

**Kauai FADs**

<i>SPECIES</i>	<i>Z</i>	<i>AA</i>	<i>BB</i>	<i>CK</i>	<i>DK</i>	<i>EK</i>	<i>KK</i>	<i>PP</i>	<i>WK</i>	<i>TOTAL</i>
Aku	0	23	0	13,708	190	660	37	804	114	<b>15,536</b>
Bigeye	0	0	0	273	0	0	0	0	0	<b>273</b>
Yellowfin	779	2,016	1,111	55,366	5,385	465	266	21,566	5,487	<b>92,441</b>
Tombo	130	0	0	30	352	0	0	0	0	<b>512</b>
Kawakawa	0	93	0	52	79	0	0	51	0	<b>275</b>
Blue marlin	0	0	0	4,188	0	0	0	406	165	<b>4,759</b>
Sailfish	0	0	0	0	25	0	0	0	0	<b>25</b>
Shortbill spearfish	79	26	0	246	25	0	43	25	58	<b>502</b>
Striped marlin	0	0	0	182	0	0	0	0	0	<b>182</b>
Swordfish	0	0	0	0	40	0	0	76	0	<b>116</b>
Kahala	0	0	0	70	0	0	0	35	0	<b>105</b>
Kamanu	0	0	0	47	0	0	0	0	8	<b>55</b>
Mahimahi	38	73	39	7,724	447	0	176	1,099	545	<b>10,141</b>
Ono	0	0	27	2,478	180	0	108	781	304	<b>3,878</b>
Mano	0	0	0	100	0	0	0	0	0	<b>100</b>
Thresher	0	0	0	105	0	0	0	0	0	<b>105</b>
Miscellaneous	0	0	0	132	0	0	0	12	0	<b>144</b>
<b>TOTAL</b>	<b>1,026</b>	<b>2,231</b>	<b>1,177</b>	<b>84,701</b>	<b>6,723</b>	<b>1,125</b>	<b>630</b>	<b>24,855</b>	<b>6,681</b>	<b>129,149</b>

**Other FADs**

<i>SPECIES</i>	<i>MO</i>	<i>W2</i>	<i>W3</i>	<i>W4</i>	<i>TOTAL</i>
Aku	5,038	997	981	0	<b>7,016</b>
Bigeye	817	82,609	90,611	14,445	<b>188,482</b>
Yellowfin	17,805	102,474	27,057	2,669	<b>150,005</b>
Tombo	20	60,167	0	49,370	<b>109,557</b>
Blue marlin	693	796	643	186	<b>2,318</b>
Shortbill spearfish	0	39	82	0	<b>121</b>
Striped marlin	0	0	91	0	<b>91</b>
Kahala	10	0	0	0	<b>10</b>
Kamanu	0	48	0	0	<b>48</b>
Mahimahi	1,540	4,100	1,532	1,019	<b>8,191</b>
Ono	209	645	374	175	<b>1,403</b>
<b>TOTAL</b>	<b>26,132</b>	<b>251,875</b>	<b>121,371</b>	<b>67,864</b>	<b>467,242</b>

Note: Data incomplete due to late submission and processing of fish catch records.

**Appendix H - FAD Catches by Island, FAD and Fishing Trip Count**

ISLAND	FAD	LOCATION	# MO. ON STATION	TOTAL LBS.	LBS. PER MO.	TOTAL TRIPS	TRIPS PER MO.	LBS. PER TRIP	RANK
HAWAII	A	South Pt.	4.5	197	43.8	2	0.4	98.5	8
	B	Miloli'i	12.0	30,346	2,528.8	299	24.9	101.5	7
	C	Loa Pt.	4.2	13,764	3,277.1	210	50.0	65.5	11
	D	Kumukahi	6.1	3,328	545.6	30	4.9	110.9	6
	E	Lelewi	10.1	39,517	3,912.6	339	33.6	116.6	5
	F	Kailua-Kona	12.0	37,569	3,130.8	622	51.8	60.4	12
	G	Pepe'ekeo	11.5	81,848	7,117.2	466	40.5	175.6	3
	KH	Kahena	5.4	8,007	1,482.8	61	11.3	131.3	4
	OTEC	Waikoloa Pt.	12.0	11,678	973.2	139	11.6	84.0	9
	QQ	Palima Pt.	7.2	14,302	1,986.4	8	1.1	1,787.8	1
	RN	Palima Pt.	5.7	117	20.5	94	16.5	1.2	16
	SS	Apua Pt.	3.4	3,591	1,056.2	12	3.5	299.3	2
	TT	Kanewa'a	12.0	4,276	356.3	94	7.8	45.5	14
	UU	Au'au	11.5	3,744	325.6	90	7.8	41.6	15
	VV	Kahalu'u	6.2	14,799	2,386.9	271	43.7	54.6	13
	XX	Puako	12.0	8,528	710.7	115	9.6	74.2	10
OAHU	J	Waiale'e	9.7	32,922	3,394.0	171	17.6	192.5	4
	P	Penguin Banks	7.8	1,847	236.8	19	2.4	97.2	7
	R	Makaha	12.0	44,860	3,738.3	464	38.7	96.7	8
	S	Pokai Bay	12.0	34,325	2,860.4	490	40.8	70.1	11
	T	Makapu'u	7.3	4,052	555.1	52	7.1	77.9	10
	U	Kane'ohe	3.8	3,856	1,014.7	42	11.1	91.8	9
	V	Makua	10.8	11,408	1,056.3	239	22.1	47.7	12
	X	Kahuku	7.5	28,292	3,772.3	126	16.8	224.5	2
	BO	Barber Pt.	12.0	147,285	12,273.8	476	39.7	309.4	1
	CO	Ka'ena Pt.	6.3	2,253	357.6	52	8.3	43.3	14
	HH	Pearl Harbor	8.4	4,364	519.5	92	11.0	47.4	13
	II	Hale'iwa	8.2	13,848	1,688.8	109	13.3	127.0	5
	LL	Hau'ula	7.8	12,659	1,622.9	64	8.2	197.8	3
MM	Mokapu Pt.	7.4	12,531	1,693.4	126	17.0	99.5	6	
T1	Waianae	12.0	0	0.0	1	0.1	0.0	15	
MAUI COUNTY	I	Halona Pt.	8.9	7,327	823.3	132	14.8	55.5	12
	K	Palaoa	12.0	22,316	1,859.7	535	44.6	41.7	14
	M	Hana Bay	6.6	3,689	558.9	41	6.2	90.0	6
	N	Cape Halawa	9.5	2,584	272.0	39	4.1	66.3	9
	O	Kalaupapa	6.6	56	8.5	1	0.2	56.0	11
	Q	Pa'uwela Pt.	3.4	2,666	784.1	54	15.9	49.4	13
	CC	Ka'ena Pt.	12.0	5,342	445.2	90	7.5	59.4	10
	DD	Opana Pt.	12.0	12,559	1,046.6	186	15.5	67.5	8
	FF	Pukaulua Pt.	5.7	2,055	360.5	22	3.9	93.4	5
	HO	Ho'olawa Pt.	5.6	9,615	1,717.0	102	18.2	94.3	4
	JJ	Kamohio	11.5	7,336	637.9	91	7.9	80.6	7
	LA	Lahaina	11.5	5,121	445.3	358	31.1	14.3	15
	MC	Palaoa	11.5	27,728	2,411.1	234	20.3	118.5	2
	NL	Nu'u	2.9	3,299	1,137.6	33	11.4	100.0	3
	T2	Kolo Harbor	12.0	0	0.0	0	0.0	0.0	**
	T3	Pala'au	12.0	0	0.0	0	0.0	0.0	**
T4	Kamalo Harbor	12.0	0	0.0	0	0.0	0.0	**	
T5	Puko'o	12.0	0	0.0	0	0.0	0.0	**	
T6	Palaoa	12.0	15,117	1,259.8	100	8.3	151.2	1	
KAUAI	Z	Kipu Kai Pt.	0.8	1,026	1,282.5	8	10.0	128.3	6
	AA	Port Allen	5.1	2,231	437.5	10	2.0	223.1	3
	BB	Moloa'a	5.1	1,177	230.8	5	1.0	235.4	1
	CK	Makahu'ena Pt.	12.0	84,701	7,058.4	697	58.1	121.5	8
	DK	Anahola	6.6	6,723	1,018.6	47	7.1	143.0	5
	EK	Hanalei	1.4	1,125	803.6	5	3.6	225.0	2
	KK	Waimea	5.1	630	123.5	15	2.9	42.0	9
	PP	Koloa	12.0	24,855	2,071.3	202	16.8	123.0	7
WK	Wailua	6.9	6,681	968.3	41	5.9	163.0	4	
<b>STATE TOTAL</b>				<b>886,072</b>		<b>8,423</b>			

\* Off station  
 \*\* No reporting