

COMMERCIAL MARINE LANDINGS SUMMARY TREND REPORT
CALENDAR YEAR 2000



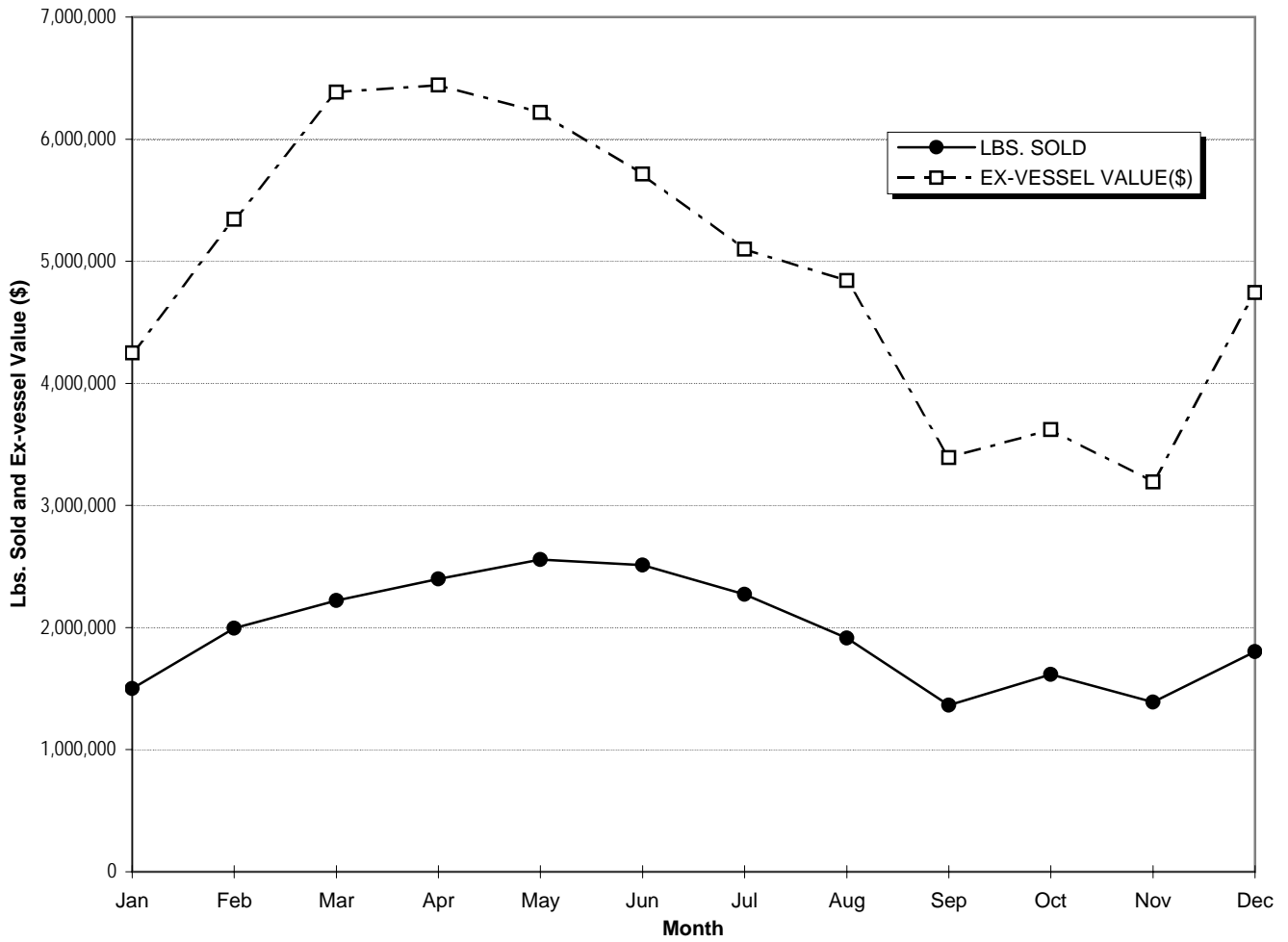
DIVISION OF AQUATIC RESOURCES
DEPARTMENT OF LAND AND NATURAL RESOURCES
STATE OF HAWAII

TABLE OF CONTENTS

	Page No.
I. CHARTS	
A. <i>TOTAL SEA LANDINGS</i>	
1. Annual Monthly Trends	1
2. Annual 5-year Trends	2
B. <i>SEA LANDINGS BY SPECIES GROUPS</i>	
1. Annual Monthly Trends	3
2. Annual 5-year Trends	4
C. <i>SEA LANDINGS BY FISHING METHOD</i>	
1. Annual Monthly Trends	5
2. Annual 5-year Trends	6
D. <i>SEA LANDINGS BY PORT</i>	
1. Annual Monthly Trends	7
2. Annual 5-year Trends	8
II. APPENDICES	
A. Sea Landings by Species	9
B. Pond Harvest by Species	10
C. Total Commercial Marine Landings	10
D. Sea Landings by Fishing Method	11
E. Sea Landings by Island	11
F. Sea Landings by Area Fished	11
G. FAD Catches by Island and Species	12
H. FAD Catches by Island, FAD and Fishing Trip Count	15

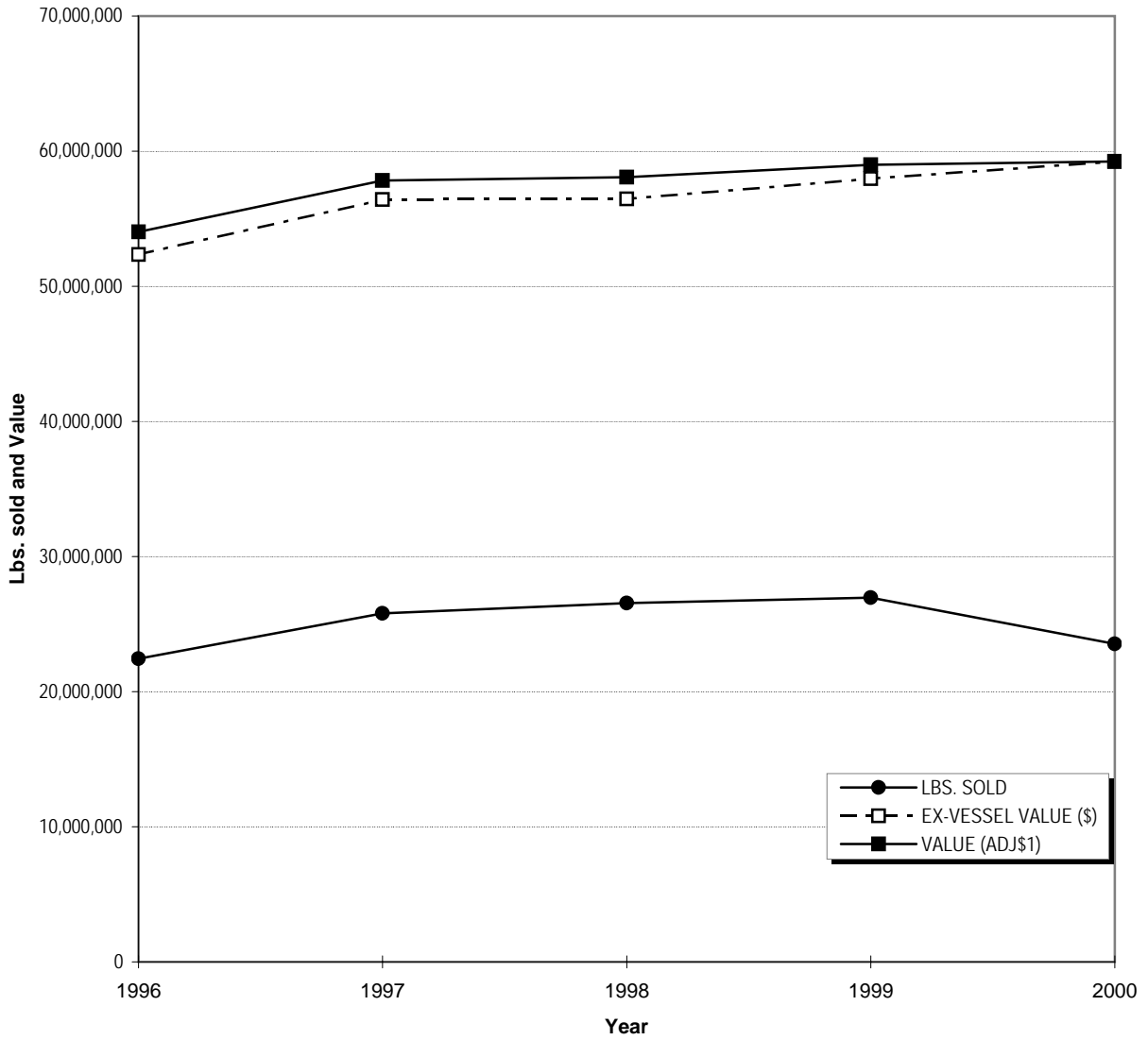
Note: Data incomplete due to late submission and processing of fish catch records.

**CHART A.1
TOTAL SEA LANDINGS ANNUAL MONTHLY TRENDS, 2000**



MONTH	LBS. SOLD	EX-VESSEL VALUE(\$)
<i>Jan</i>	1,501,164	4,248,183
<i>Feb</i>	1,993,373	5,343,168
<i>Mar</i>	2,220,831	6,383,721
<i>Apr</i>	2,398,180	6,443,027
<i>May</i>	2,557,229	6,218,267
<i>Jun</i>	2,510,298	5,715,018
<i>Jul</i>	2,270,954	5,097,666
<i>Aug</i>	1,912,654	4,842,309
<i>Sep</i>	1,365,264	3,390,826
<i>Oct</i>	1,615,117	3,621,403
<i>Nov</i>	1,388,453	3,192,901
<i>Dec</i>	1,802,926	4,742,138
TOTAL	23,536,443	59,238,628

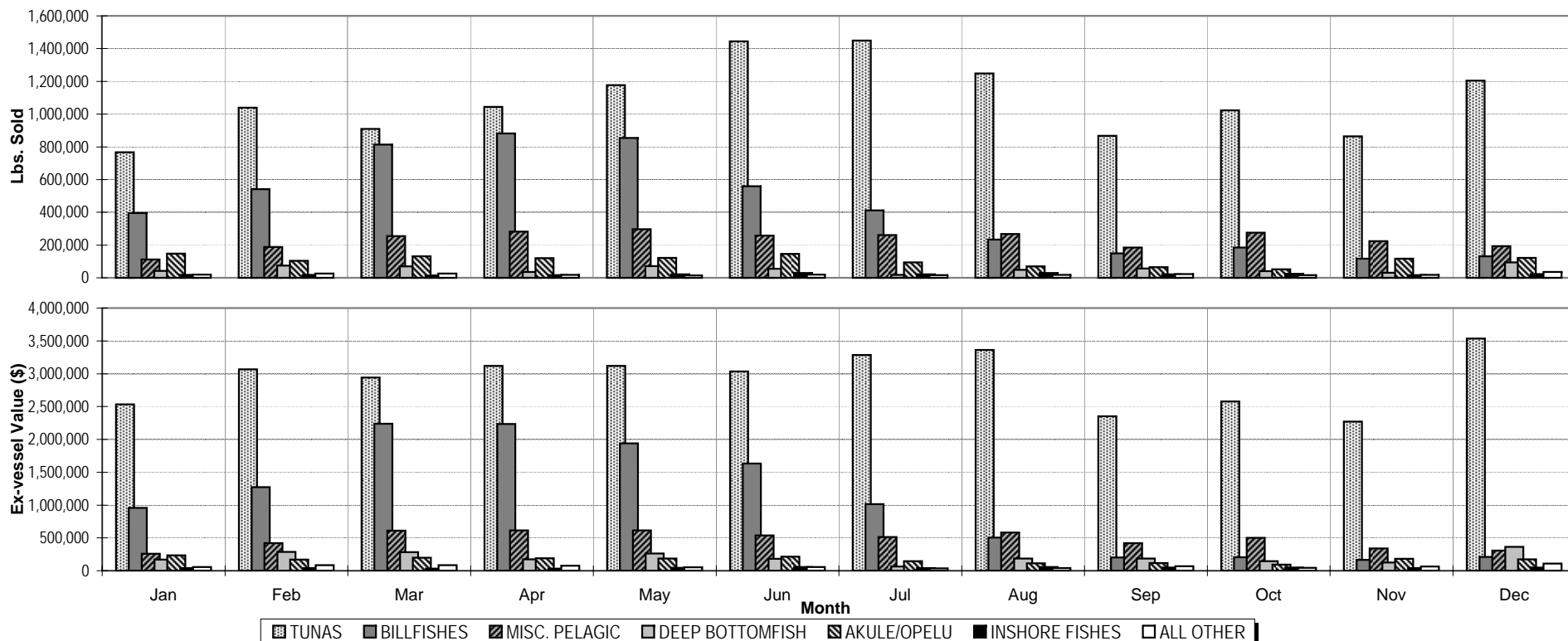
**CHART A.2
TOTAL SEA LANDINGS ANNUAL 5 - YEAR TRENDS, 1996 - 2000**



YEAR	LBS. SOLD	EX-VESSEL VALUE (\$)	HCPI¹	VALUE (ADJ\$¹)
1996	22,445,755	52,353,358	171.0	54,037,238
1997	25,792,857	56,425,781	172.2	57,834,788
1998	26,558,869	56,464,083	171.6	58,076,403
1999	26,966,241	57,965,958	173.4	59,002,258
2000	23,536,443	59,238,628	176.5	59,238,628

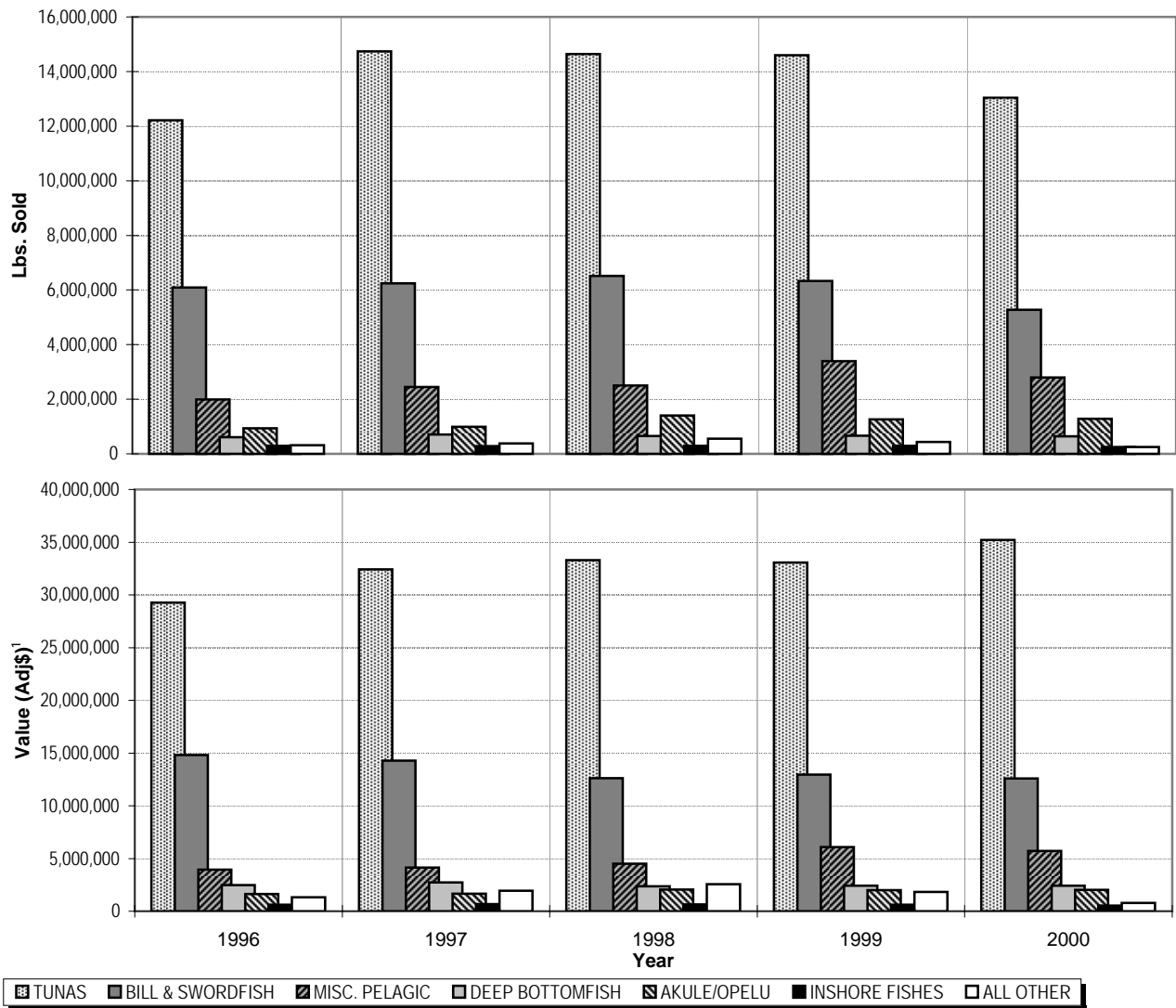
¹Honolulu Consumer Price Index (all wage earners)

**CHART B.1
SEA LANDINGS BY SPECIES GROUP ANNUAL MONTHLY TRENDS, 2000**



Calendar Year 2000		MONTH												YEAR
SPECIES GROUP		Jan	Feb	Mar	Apr	May	Jun	Jul	Aug	Sep	Oct	Nov	Dec	TOTAL
TUNA	Lbs. Sold	766,197	1,039,521	909,690	1,044,396	1,176,408	1,444,190	1,449,025	1,247,531	867,180	1,023,048	864,713	1,205,056	13,036,955
	Ex-vessel Value (\$)	2,535,112	3,067,510	2,942,881	3,119,606	3,119,677	3,035,824	3,283,241	3,362,821	2,352,141	2,575,946	2,272,061	3,533,904	35,200,723
BILLFISH	Lbs. Sold	396,110	541,901	814,546	881,568	854,523	559,380	411,291	232,808	149,278	185,037	116,050	131,937	5,274,429
	Ex-vessel Value(\$)	956,936	1,270,808	2,237,283	2,236,097	1,940,031	1,633,747	1,015,381	504,930	200,249	208,077	166,990	209,211	12,579,741
MISC. PELAGIC	Lbs. Sold	112,197	188,281	254,085	282,080	297,426	258,119	260,804	267,838	184,256	275,033	224,197	192,257	2,796,573
	Ex-vessel Value(\$)	256,846	421,204	608,758	613,538	612,289	539,076	511,266	580,056	418,517	501,719	338,241	306,777	5,708,287
DEEP BOTTOMFISH	Lbs. Sold	41,547	74,952	69,450	35,767	71,243	54,813	18,058	48,754	56,256	40,312	31,420	93,998	636,570
	Ex-vessel Value (\$)	169,331	287,918	283,195	174,703	261,631	180,770	63,545	183,840	185,087	146,688	127,135	364,408	2,428,252
AKULE/OPELU	Lbs. Sold	147,104	104,165	132,028	119,224	121,268	145,200	93,883	69,107	65,007	51,208	117,493	121,486	1,287,173
	Ex-vessel Value (\$)	233,005	170,109	197,715	189,325	187,451	214,875	147,388	114,130	115,641	94,403	183,136	172,343	2,019,520
INSHORE FISH	Lbs. Sold	18,469	18,137	14,442	16,584	21,788	28,843	21,152	28,630	21,239	23,530	16,883	22,004	251,701
	Ex-vessel Value (\$)	40,050	42,163	30,765	31,436	44,371	55,852	39,578	56,033	49,806	48,161	39,478	47,581	525,274
ALL OTHER	Lbs. Sold	19,540	26,416	26,590	18,561	14,573	19,753	16,741	17,986	22,048	16,949	17,697	36,188	253,042
	Ex-vessel Value (\$)	56,902	83,456	83,123	78,323	52,817	54,874	37,267	40,500	69,386	46,408	65,860	107,915	776,832
TOTAL	Lbs. Sold	1,501,164	1,993,373	2,220,831	2,398,180	2,557,229	2,510,298	2,270,954	1,912,654	1,365,264	1,615,117	1,388,453	1,802,926	23,536,443
	Ex-vessel Value (\$)	4,248,183	5,343,168	6,383,721	6,443,027	6,218,267	5,715,018	5,097,666	4,842,309	3,390,826	3,621,403	3,192,901	4,742,138	59,238,628

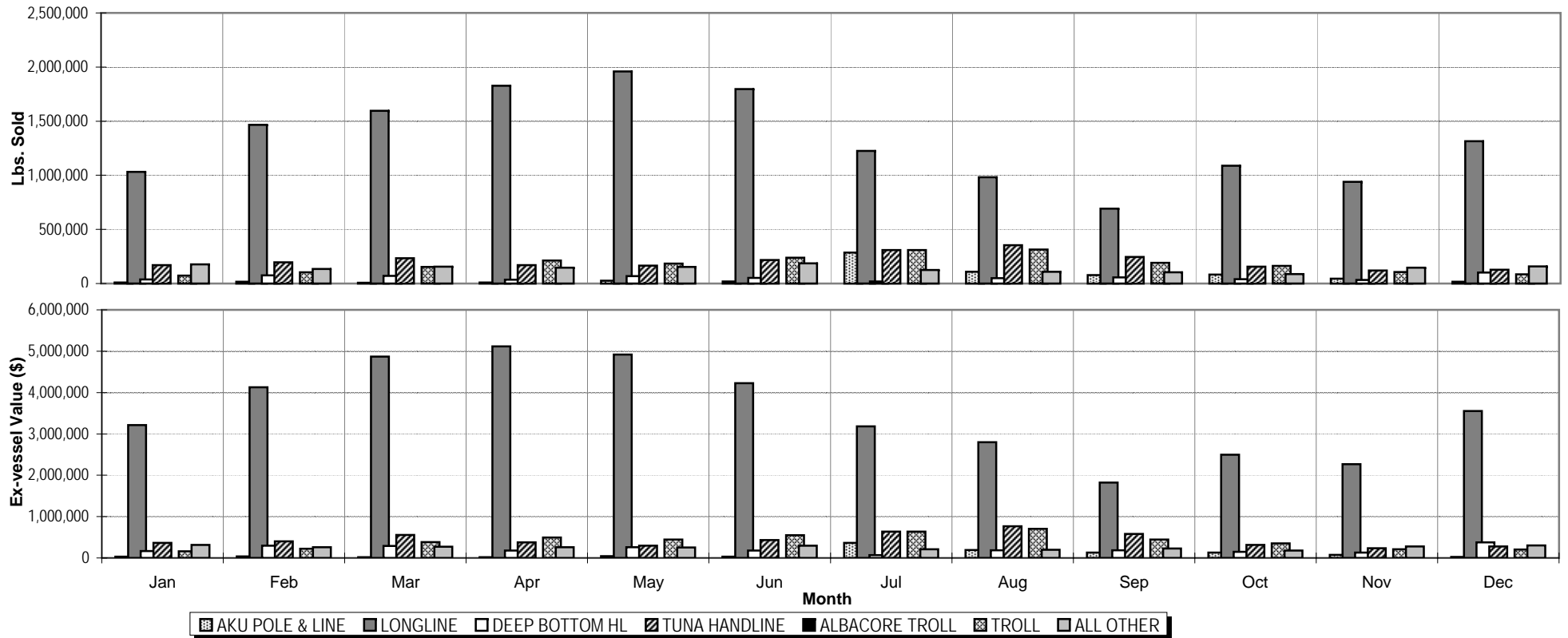
CHART B.2
SEA LANDINGS BY SPECIES GROUPS ANNUAL 5 - YEAR TRENDS, 1996 - 2000



<i>Calendar Year</i>		<i>YEAR</i>				
SPECIES GROUP		1996	1997	1998	1999	2000
TUNA	<i>Lbs. Sold</i>	12,215,918	14,738,122	14,638,320	14,592,801	13,036,955
	<i>Value (Adj\$)¹</i>	29,257,010	32,426,826	33,300,629	33,080,810	35,200,723
BILL & SWORDFISH	<i>Lbs. Sold</i>	6,093,377	6,244,946	6,519,415	6,329,647	5,274,429
	<i>Value (Adj\$)¹</i>	14,803,355	14,290,709	12,629,966	12,970,065	12,579,741
MISC. PELAGIC	<i>Lbs. Sold</i>	1,994,798	2,448,200	2,500,289	3,392,696	2,796,573
	<i>Value (Adj\$)¹</i>	3,930,885	4,130,053	4,496,530	6,080,186	5,708,287
DEEP BOTTOMFISH	<i>Lbs. Sold</i>	609,004	706,314	653,261	665,271	636,570
	<i>Value (Adj\$)¹</i>	2,476,881	2,722,779	2,364,369	2,420,162	2,428,252
AKULE/OPELU	<i>Lbs. Sold</i>	931,891	992,632	1,398,722	1,258,240	1,287,173
	<i>Value (Adj\$)¹</i>	1,620,969	1,665,104	2,052,600	2,007,503	2,019,520
INSHORE FISH	<i>Lbs. Sold</i>	290,393	279,810	291,347	289,214	251,701
	<i>Value (Adj\$)¹</i>	622,903	665,220	658,081	619,295	525,274
ALL OTHER	<i>Lbs. Sold</i>	310,374	382,833	557,515	438,372	253,042
	<i>Value (Adj\$)¹</i>	1,325,236	1,934,097	2,574,228	1,824,237	776,832
TOTAL	<i>Lbs. Sold</i>	22,445,755	25,792,857	26,558,869	26,966,241	23,536,443
	<i>Value (Adj\$)¹</i>	54,037,238	57,834,788	58,076,403	59,002,258	59,238,628

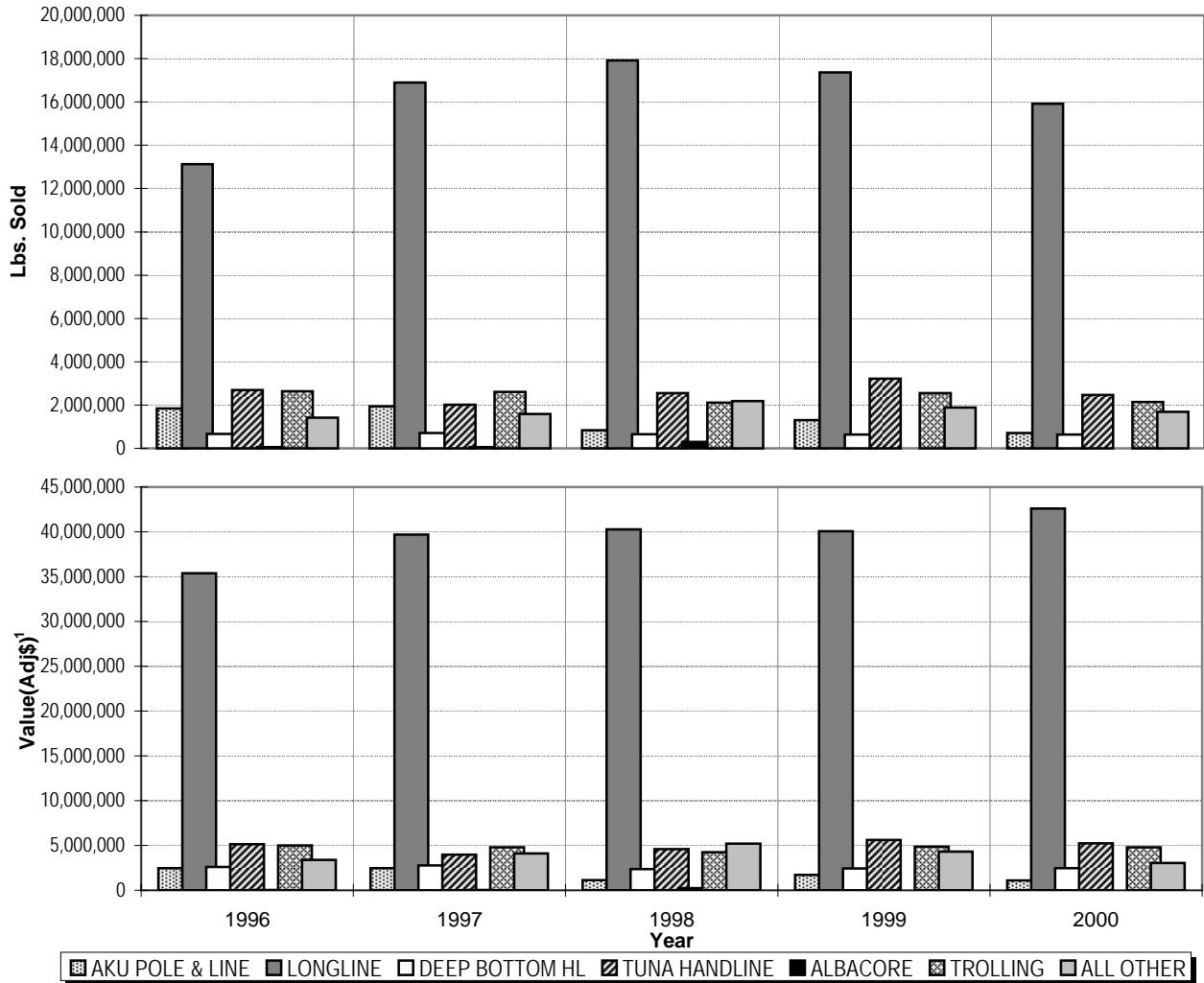
¹ Honolulu Consumer Price Index (all wage earners)

**CHART C.1
SEA LANDINGS BY FISHING METHOD ANNUAL MONTHLY TRENDS, 2000**



Calendar Year 2000		MONTH												YEAR TOTAL
METHOD		<i>Jan</i>	<i>Feb</i>	<i>Mar</i>	<i>Apr</i>	<i>May</i>	<i>Jun</i>	<i>Jul</i>	<i>Aug</i>	<i>Sep</i>	<i>Oct</i>	<i>Nov</i>	<i>Dec</i>	
AKU POLE & LINE	<i>Lbs. Sold</i>	9,182	17,322	8,162	8,376	26,260	19,762	284,866	107,551	77,579	81,950	45,281	16,079	702,370
	<i>Ex-vessel Value (\$)</i>	28,194	38,602	17,260	20,001	43,344	32,028	365,475	190,489	127,389	132,662	72,939	26,099	1,094,482
LONGLINE	<i>Lbs. Sold</i>	1,032,658	1,465,911	1,596,718	1,827,211	1,958,920	1,796,288	1,224,995	981,322	691,366	1,088,029	940,319	1,314,557	15,918,294
	<i>Ex-vessel Value (\$)</i>	3,210,303	4,125,193	4,869,552	5,114,541	4,916,963	4,228,472	3,183,455	2,797,187	1,823,563	2,498,124	2,266,632	3,553,466	42,587,450
DEEP BOTTOM HL	<i>Lbs. Sold</i>	38,254	75,339	70,715	35,066	68,472	51,981	18,116	48,404	55,942	39,134	31,916	101,889	635,228
	<i>Ex-vessel Value (\$)</i>	169,044	293,911	288,367	176,512	259,421	177,249	66,174	187,283	185,923	147,007	129,003	376,327	2,456,223
TUNA HANDLINE	<i>Lbs. Sold</i>	169,350	196,443	234,453	168,906	166,161	216,705	308,123	353,601	244,914	156,802	119,889	128,231	2,463,578
	<i>Ex-vessel Value (\$)</i>	365,622	400,318	557,450	375,743	296,760	430,239	634,475	764,942	582,302	312,154	233,788	275,022	5,228,816
ALBACORE TROLL	<i>Lbs. Sold</i>	0	0	0	0	0	0	0	0	0	0	0	0	0
	<i>Ex-vessel Value (\$)</i>	0	0	0	0	0	0	0	0	0	0	0	0	0
TROLL	<i>Lbs. Sold</i>	73,854	104,764	154,470	211,422	184,003	238,341	310,046	313,233	191,665	161,905	105,470	84,223	2,133,396
	<i>Ex-vessel Value (\$)</i>	160,911	225,020	382,002	494,138	447,416	547,683	636,647	707,471	444,530	349,441	209,423	205,878	4,810,559
ALL OTHER	<i>Lbs. Sold</i>	177,866	133,594	156,313	147,199	153,413	187,221	124,808	108,543	103,798	87,297	145,578	157,947	1,683,577
	<i>Ex-vessel Value (\$)</i>	314,109	260,124	269,089	262,092	254,363	299,347	211,440	194,937	227,119	182,016	281,116	305,345	3,061,098
TOTAL	<i>Lbs. Sold</i>	1,501,164	1,993,373	2,220,831	2,398,180	2,557,229	2,510,298	2,270,954	1,912,654	1,365,264	1,615,117	1,388,453	1,802,926	23,536,443
	<i>Ex-vessel Value (\$)</i>	4,248,183	5,343,168	6,383,721	6,443,027	6,218,267	5,715,018	5,097,666	4,842,309	3,390,826	3,621,403	3,192,901	4,742,138	59,238,628

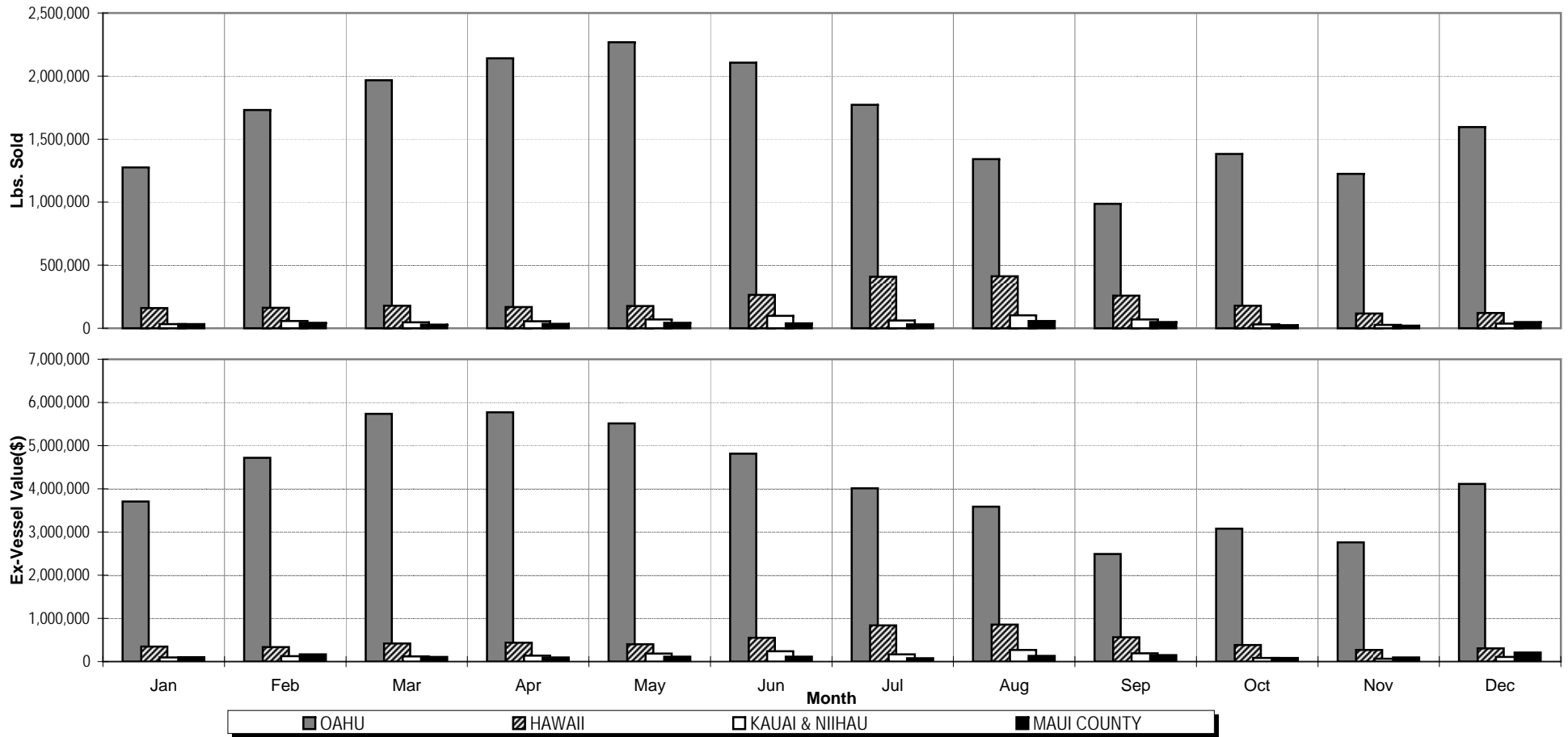
CHART C.2
SEA LANDINGS FISHING METHOD ANNUAL 5 - YEAR TRENDS, 1996 - 2000



<i>Calendar Year 2000</i>		<i>YEAR</i>				
FISHING METHOD		1996	1997	1998	1999	2000
AKU POLE & LINE	<i>Lbs. Sold</i>	1,839,376	1,937,321	842,085	1,307,402	702,370
	<i>Value (Adj\$)¹</i>	2,465,344	2,453,001	1,138,019	1,699,331	1,094,482
LONGLINE	<i>Lbs. Sold</i>	13,129,521	16,893,051	17,923,019	17,365,723	15,918,294
	<i>Value (Adj\$)¹</i>	35,392,926	39,696,780	40,281,824	40,078,930	42,587,450
DEEP BOTTOM HL	<i>Lbs. Sold</i>	663,502	714,007	645,279	643,291	635,228
	<i>Value (Adj\$)¹</i>	2,605,241	2,763,913	2,377,810	2,418,240	2,456,223
TUNA HANDLINE	<i>Lbs. Sold</i>	2,686,588	2,006,090	2,555,058	3,216,382	2,463,578
	<i>Value (Adj\$)¹</i>	5,137,145	3,958,943	4,591,215	5,614,043	5,228,817
ALBACORE	<i>Lbs. Sold</i>	62,004	50,199	303,214	0	0
	<i>Value (Adj\$)¹</i>	51,198	40,999	232,412	0	0
TROLLING	<i>Lbs. Sold</i>	2,641,818	2,608,497	2,112,905	2,546,962	2,133,396
	<i>Value (Adj\$)¹</i>	4,998,005	4,798,647	4,254,643	4,872,996	4,810,559
ALL OTHER	<i>Lbs. Sold</i>	1,422,946	1,583,692	2,177,309	1,886,481	1,683,577
	<i>Value (Adj\$)¹</i>	3,387,378	4,122,505	5,200,480	4,318,717	3,061,098
TOTAL	<i>Lbs. Sold</i>	22,445,755	25,792,857	26,558,869	26,966,241	23,536,443
	<i>Value (Adj\$)¹</i>	54,037,238	57,834,788	58,076,403	59,002,258	59,238,628

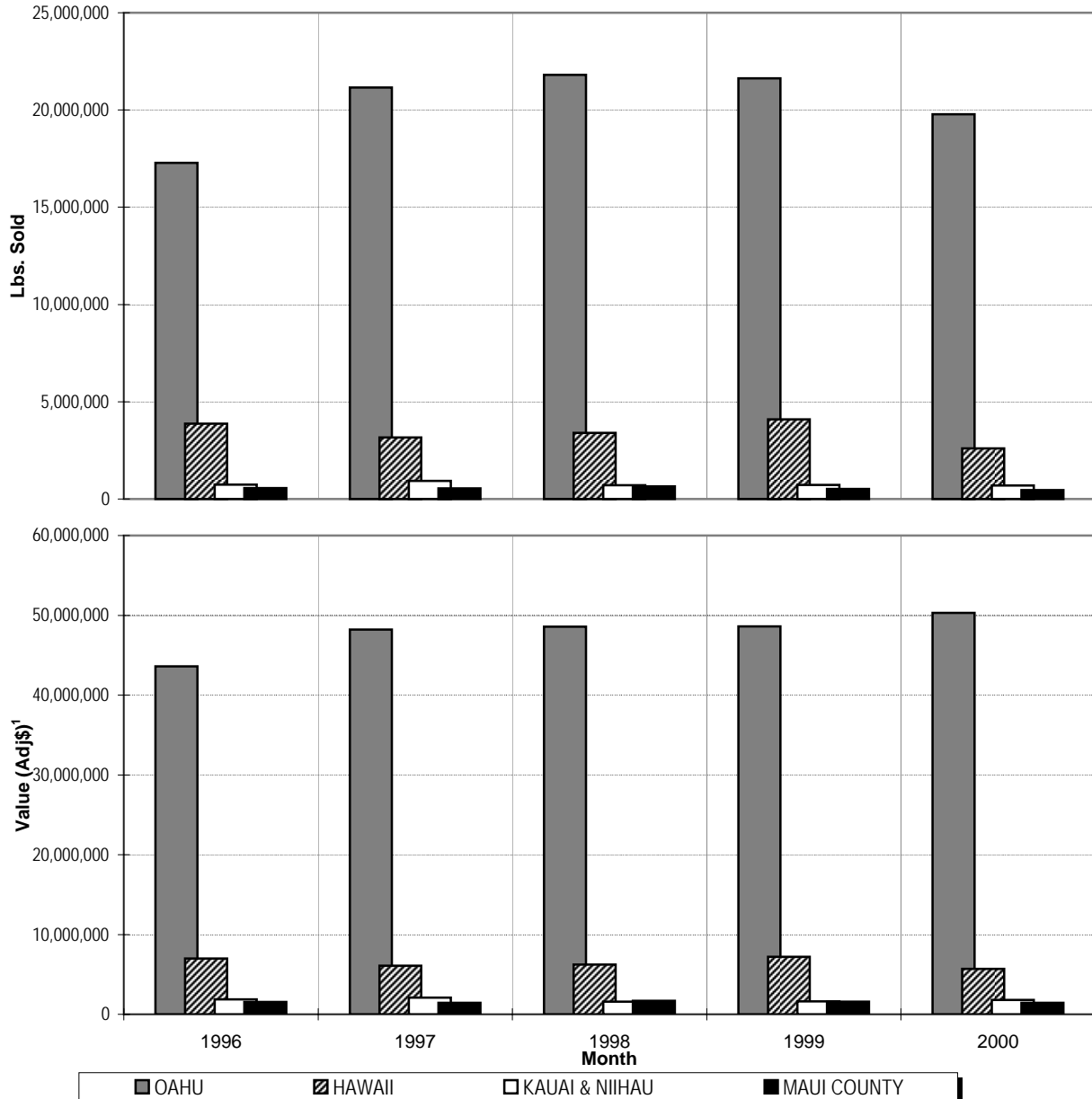
¹ Honolulu Consumer Price Index (all wage earners)

**CHART D.1
SEA LANDINGS BY PORT ANNUAL MONTHLY TRENDS. 2000**



Calendar Year 2000		2000												
PORT		Jan	Feb	Mar	Apr	May	Jun	Jul	Aug	Sep	Oct	Nov	Dec	TOTAL
OAHU	<i>Lbs. Sold</i>	1,274,935	1,730,188	1,965,870	2,140,726	2,267,914	2,107,247	1,771,298	1,340,605	987,342	1,382,432	1,223,637	1,596,093	19,788,287
	<i>Ex-vessel Value (\$)</i>	3,706,007	4,716,285	5,735,528	5,771,425	5,517,448	4,811,581	4,014,844	3,587,098	2,489,078	3,075,791	2,761,665	4,116,153	50,302,904
HAWAII	<i>Lbs. Sold</i>	159,500	161,819	178,736	168,002	176,194	264,784	408,036	412,152	258,559	178,138	117,535	120,016	2,603,471
	<i>Ex-vessel Value (\$)</i>	345,709	333,302	421,769	437,840	402,289	550,041	837,377	855,220	559,927	381,797	268,702	305,563	5,699,536
KAUAI & NIIHAU	<i>Lbs. Sold</i>	33,301	57,633	48,161	55,029	69,963	98,562	61,650	101,956	69,261	29,973	27,335	37,484	690,308
	<i>Ex-vessel Value (\$)</i>	93,042	126,892	119,168	136,293	186,694	242,354	166,513	268,948	193,954	81,526	66,449	108,527	1,790,359
MAUI COUNTY	<i>Lbs. Sold</i>	33,428	43,733	28,064	34,423	43,158	39,705	29,970	57,941	50,102	24,574	19,946	49,333	454,377
	<i>Ex-vessel Value (\$)</i>	103,425	166,689	107,257	97,468	111,837	111,042	78,931	131,043	147,867	82,290	96,085	211,895	1,445,829
TOTAL	<i>Lbs. Sold</i>	1,501,164	1,993,373	2,220,831	2,398,180	2,557,229	2,510,298	2,270,954	1,912,654	1,365,264	1,615,117	1,388,453	1,802,926	23,536,443
	<i>Ex-vessel Value (\$)</i>	4,248,183	5,343,168	6,383,721	6,443,027	6,218,267	5,715,018	5,097,666	4,842,309	3,390,826	3,621,403	3,192,901	4,742,138	59,238,628

**CHART D.2
SEA LANDINGS BY PORT ANNUAL 5-YEAR TRENDS, 1996 - 2000**



<i>Calendar Year</i>		YEAR				
PORT		1996	1997	1998	1999	2000
OAHU	<i>Lbs. Sold</i>	17,281,161	21,160,733	21,800,083	21,624,727	19,788,287
	<i>Value (Adj\$)¹</i>	43,607,125	48,222,341	48,562,839	48,624,944	50,302,904
HAWAII	<i>Lbs. Sold</i>	3,873,204	3,160,389	3,407,505	4,096,232	2,603,471
	<i>Value (Adj\$)¹</i>	7,006,612	6,076,313	6,220,893	7,199,083	5,699,536
KAUAI & NIIHAU	<i>Lbs. Sold</i>	733,696	927,797	706,076	729,093	690,308
	<i>Value (Adj\$)¹</i>	1,891,200	2,099,477	1,596,431	1,610,612	1,790,359
MAUI COUNTY	<i>Lbs. Sold</i>	557,694	543,938	645,205	516,189	454,377
	<i>Value (Adj\$)¹</i>	1,532,300	1,436,656	1,696,239	1,567,620	1,445,829
TOTAL	<i>Lbs. Sold</i>	22,445,755	25,792,857	26,558,869	26,966,241	23,536,443
	<i>Value (Adj\$)¹</i>	54,037,238	57,834,788	58,076,403	59,002,258	59,238,628

¹ Honolulu Consumer Price Index (all wage earners)

APPENDICES
Statistical Tables
Calendar 2000

Appendix A - Sea Landings by Species

SPECIES	LBS. LANDED	LBS. SOLD	VALUE(\$)	SPECIES	LBS. LANDED	LBS. SOLD	VALUE(\$)
TUNAS				JACKS			
Aku	1,052,008	989,502	1,443,137	Butaguchi	37,492	33,031	60,284
Bigeye	5,480,241	5,455,231	19,109,253	Dobe	1,386	1,375	2,357
Bluefin	3,415	3,415	40,356	Gunkan	658	620	735
Kawakawa	9,003	5,676	8,236	Kamanu	3,634	2,833	4,652
Keokeo	324	181	332	Kihikihi	296	232	375
Tombo	1,990,592	1,986,116	2,757,712	Lae	461	427	794
Yellowfin	4,690,586	4,595,942	11,839,585	Menpachi (sasa)	497	347	648
Unclassified	978	892	2,112	Omaka ²	---	---	---
SUBTOTAL	13,227,147	13,036,955	35,200,723	Omilu	2,571	1,961	4,122
BILLFISHES & SWORDFISH				Paopao	70	46	98
Black marlin	12,765	10,565	14,187	Papa	4,122	3,722	8,029
Blue marlin	915,791	836,747	1,025,015	White	6,074	5,079	7,205
Sailfish	5,154	4,666	6,097	Unclass./misc. ²	23,431	17,111	35,355
Shortbill spearfish	286,379	275,483	336,401	SUBTOTAL	80,692	66,784	124,654
Striped marlin	477,198	468,084	863,893	INSHORE FISHES			
Swordfish	3,685,387	3,678,310	10,333,742	<i>Parrotfishes</i>			
Unclassified ²	---	---	---	Panuhunuhu	866	835	2,294
SUBTOTAL	5,382,674	5,273,855	12,579,336	Uhu	27,144	25,770	63,513
MISC. PELAGIC FISHES				<i>Goatfishes</i>			
Kaku	14,087	12,712	15,466	Kumu	4,993	4,479	33,138
Mahimahi	1,370,579	1,278,580	2,657,067	Malu	215	201	786
Malolo	5	5	3	Moano	2,775	2,078	7,383
Mola mola	108	78	9	Moana kali	976	779	4,455
Monchong	238,214	237,307	425,529	Munu	230	199	1,352
Ono	648,883	597,420	1,516,923	Weke	16,524	15,833	30,211
Opah	591,111	590,906	955,123	Weke ula	14,283	12,352	36,996
Walu	79,802	79,565	138,168	<i>Surgeonfishes</i>			
SUBTOTAL	2,942,789	2,796,573	5,708,287	Kala	18,122	17,740	20,561
DEEP BOTTOMFISHES				Kole	2,887	2,300	4,663
Alfonsin	21	16	38	Maiko	4,688	4,635	4,295
Armor Head ²	---	---	---	Manini	12,152	11,755	25,747
Ehu	42,983	39,882	155,336	Naenae	7,364	7,355	7,679
Golden kale	86	82	188	Opelu kala	5,519	5,355	5,030
Hapuupuu	41,082	39,020	140,407	Pakuikui	446	444	554
Hogo	2,779	2,418	9,604	Pala ²	---	---	---
Kahala	24,597	4,334	4,315	Palani	30,051	29,757	37,472
Kalekale	20,927	18,729	56,598	Pualu	4,427	4,387	5,866
Lehi	11,413	9,822	31,286	<i>Damselfishes</i>			
Opakapaka	206,103	193,162	854,705	Kupipi	43	42	31
Randall snapper ²	---	---	---	Maomao	585	522	1,072
Taape	55,058	46,004	47,762	<i>Squirtfishes</i>			
Ukikiki (gindai)	5,633	4,947	16,134	Alaihi	122	119	175
Uku	125,398	118,426	304,883	Uu	37,374	34,572	110,746
Ulaula (onaga)	168,043	159,717	806,968	Uukanipo	105	86	233
SUBTOTAL	704,123	636,559	2,428,225	<i>Wrasses</i>			
AKULE/OPELU				Aawa	2,138	1,801	2,240
Akule	1,069,033	1,008,557	1,523,805	Ea	335	298	569
Hahalalu	25,150	23,720	41,666	Hilu	39	39	35
Opelu	264,235	254,894	454,046	Hinalea	281	268	275
Opelu Mama ²	---	---	---	Kupoupou	98	96	320
SUBTOTAL	1,358,418	1,287,171	2,019,518	Laenihi	4,935	3,678	21,439
				Pouu ⁴	---	---	---

²Due to low level of fishermen reporting and to preserve confidentiality, data for these species are pooled under their respective species group unclassified/miscellaneous or the Unclass./Misc. category.

SPECIES	LBS. LANDED	LBS. SOLD	VALUE(\$)
INSHORE FISHES(cont.)			
<i>Miscellaneous Inshore Fishes</i>			
Ahaaha	545	534	694
Aholehole	2,748	2,442	7,839
Amaama	5,817	5,542	16,398
Awa	1,845	1,837	1,748
Awaawa	291	284	258
Aweoweo	2,982	2,671	6,860
Humuhumu	117	33	41
Kawelea	4,196	4,112	5,880
Moi	740	646	2,450
Mu	2,868	2,704	7,359
Nenu	9,704	9,424	13,345
Nohu	607	503	1,370
Nunu	31	21	22
Oililepa	25,624	25,166	20,267
Oio	5,960	5,189	5,280
Oopuhue ²	---	---	---
Pakii	34	34	37
Poopaa	503	483	706
Puhi (white)	339	328	478
Puhi (misc.)	194	187	145
Roi	665	445	1,013
Toau	1,273	1,070	3,448
Uouoa	205	205	438
Upapalu	21	6	6
Wahanui	65	37	29
SUBTOTAL	267,091	251,678	525,239

SHARKS

Blue shark ²	---	---	---
Hammerhead ²	---	---	---
Mako	70,841	68,647	85,760
Oceanic whitetip	4,030	0	0
Thresher	36,294	34,472	36,346
Tiger ²	---	---	---
Unclass/misc ²	18,705	1,372	995
Blue (fins)	3,591	3,591	86,616
Mako shark (fins)	321	321	3,369
Oceanic whitetip (fins)	217	217	6,668
Thresher (fins)	223	223	3,348
Unclass. (fins)	456	456	9,793
SUBTOTAL	134,678	109,299	232,895

LOBSTERS

Ula (slipper)	179	159	1,541
Ula (spiny)	10,111	9,147	106,753
SUBTOTAL	10,290	9,306	108,294

CRABS

Aama	540	539	3,777
Kona	14,303	10,130	46,934
Kuahonu	10,119	9,932	31,197
Moala ⁴	---	---	---
Samoan ²	---	---	---
Crab (Unclass./misc.) ⁴	102	68	306
SUBTOTAL	25,064	20,669	82,215

SPECIES	LBS. LANDED	LBS. SOLD	VALUE(\$)
SHRIMP			
Ensifer ²	---	---	---
Laevigatus ²	---	---	---
Unclass./misc. ²	853	772	5,191
SUBTOTAL	853	772	5,191

OTHER ANIMALS

Hee (octopus)	23,432	18,921	54,837
Lole (sea cucumber)	220	220	895
Muhee (squid)	4,971	4,080	9,647
Opihi	9,950	8,707	40,977
Pupu ²	---	---	---
SUBTOTAL	38,573	31,928	106,356

SEAWEEDS

Limu kohu	1,827	1,798	15,957
Limu manauea ²	---	---	---
Limu ogo	2,342	1,731	5,590
Limu wawaeiole	4,227	4,227	3,773
Unclass./misc. ²	2,067	2,012	6,352
SUBTOTAL	10,463	9,768	31,672

CORALS

Black ²	--	--	--
Gold (Gerardia sp.) ²	--	--	--
Pink (C. regale) ²	--	--	--
Pink (C. secundum) ²	--	--	--
SUBTOTAL	not available ²		

UNCLASS./MISC.

Unclass./misc. ²	10,865	5,126	86,025
TOTAL	24,193,720	23,536,443	59,238,628

Appendix B - Pond Harvest by species

Aholehole ²	--	--	--
Amaama ²	--	--	--
Awaawa ²	--	--	--
Kaku ²	--	--	--
Moi ²	--	--	--
Oio ²	--	--	--
Omilu ²	--	--	--
Palani ⁴	--	--	--
Papio (misc.) ⁴	--	--	--
Tilapia ⁴	--	--	--
Toau ⁴	--	--	--
Miscellaneous ²	2,861	2,667	7,301
Total	2,861	2,667	7,301

Appendix C - Total Commercial Marine Landings

SPECIES	LBS. LANDED	LBS. SOLD	VALUE(\$)
GRAND TOTAL	24,196,581	23,539,110	59,245,929

Appendix D - Sea Landings by Fishing Method

FISHING METHOD	LBS. LANDED	LBS. SOLD	VALUE(\$)
Aku pole & line	706,491	702,370	1,094,482
Longline	15,956,821	15,918,294	42,587,450
Deepbottom handline	697,487	635,228	2,456,223
Inshore handline	467,657	420,149	877,183
Tuna handline	2,513,171	2,463,578	5,228,816
Other handline ³	---	---	---
Trolling	2,514,037	2,133,396	4,810,559
Diving	93,038	80,256	339,659
Net	1,142,570	1,088,053	1,634,960
Trap	77,500	75,096	129,014
Rod & reel (casting, dunking, etc.)	2,010	760	2,844
Handpick (limu & opihii)	20,413	18,475	72,649
Other ³	---	---	---
Miscellaneous ³	2,525	788	4,788
TOTAL	24,193,720	23,536,443	59,238,628

Appendix E - Sea Landings by Island

ISLAND	LBS. LANDED	LBS. SOLD	VALUE(\$)
Oahu	20,064,368	19,788,287	50,302,904
Hawaii	2,765,339	2,603,471	5,699,536
Maui	526,363	414,336	1,314,401
Kauai & Niihau	783,794	690,308	1,790,359
Molokai	36,748	28,188	102,619
Lanai	17,108	11,853	28,809
STATE TOTAL	24,193,720	23,536,443	59,238,628

Appendix F - Sea Landings by Area Fished

AREA (area catch code)	LBS. LANDED	LBS. SOLD	VALUE(\$)
Main Hawaiian Islands (refer to Fisheries Chart No. 1)			
Kaula (508,528)	65,609	65,313	174,128
Kaulakahi Channel (521,525)	85,741	78,600	224,350
Niihau (505-506,526,527)	112,576	104,524	235,679
Makahuena Pt. - Kekaha (500,520)	613,452	568,350	1,068,275
Barking Sands - Na Pali Coast (501-502,522)	11,615	7,360	18,772
Hanalei - Moloa'a Bay (503,523)	114,307	87,700	195,985
Anahola - Nawiliwili (504,524)	157,366	132,594	277,928
Sand Is. - Ala Wai (400,420)	93,748	83,326	153,725
Pearl Harbor - Barbers Pt. (401,421)	243,466	221,747	433,409
Barbers Pt. - Kaena Pt. (402-403,422-423)	669,555	605,353	1,217,304
Kaena Pt. - Kahuku (404-405,424-425)	443,357	417,094	849,567
Laie Pt. - Kahana Bay (406-426)	144,053	136,759	252,627
Kaneohe Bay (407,427)	377,706	364,445	655,442
Kailua Bay - Makapuu Pt. (408,428)	105,807	98,444	163,120
Makapuu Pt. - Diamond Head (409)	17,299	16,817	28,351

Appendix F - Sea Landings by Area Fished (cont.)

AREA (area catch code)	LBS. LANDED	LBS. SOLD	VALUE(\$)
Kawai (Molokai) Channel (332,429)	91,571	86,764	142,048
Penguin Bank (331)	126,829	117,918	392,761
Kealaikahiki Channel (327)	53,819	44,283	151,614
Alenuihaha Channel (324-325)	33,260	29,773	86,530
Auau, Kalohi & Pailolo Channels (321)	34,495	26,841	189,991
Alalakeiki Channel (320)	84,928	62,417	219,650
Molokai (310-314,333)	41,194	34,196	124,676
Lanai (308-309,328)	192,928	158,914	330,659
Kahoolawe (306-307,326)	13,783	10,294	37,463
Makena - Hana (304-305)	32,578	28,940	137,847
Hana - Kahului (302-303,322-323)	105,812	85,821	258,957
Honolua - Lahaina (301)	35,295	33,925	61,738
Lahaina - Makena (300)	78,736	61,016	112,946
Milolii - South Pt. (100,108,120,128)	194,088	185,539	425,994
Punaluu - Kalapana (107,127)	125,049	123,055	321,202
Kona Coast (101,121)	1,226,201	1,125,906	2,233,041
Keahole - Kawaihae (102,122)	176,436	149,259	323,024
Kohala - Hamakua Coast (103-104,123-124)	168,394	165,480	426,144
Hilo (105,125)	126,960	121,250	324,494
Puna - Kalapana (106,126)	403,249	395,762	1,037,181
Other (all other area codes from Fisheries Chart No. 1 not listed above)	825,146	819,595	2,566,771
SUBTOTAL	7,426,408	6,855,374	15,853,394
Northwestern Hawaiian Islands offshore - 200 mile EEZ (refer to Fisheries Chart No. 2)			
Nihoa (16223C,16123A,16222I)	26,824	24,199	86,596
Twin Bank (16323C,16223A) ³	---	---	---
Necker (16423D,16423E,16423F,16423B,16423C) ³	---	---	---
French Frigate (16623H,16623I,16623F) ³	---	---	---
Brooks Bank (16624A,16623G)	24,937	23,596	83,699
St. Rogatien (16724F,16724C)	33,279	30,927	121,840
Gardner Pinnacles (16825C,16725A,16824I,16824F,16724G,16724D)	24,246	22,551	74,133
Maro Reef (17025D, 17025E, 17025A, 17025B)	15,143	14,459	50,491
Laysan (17125G, 17125H) ³	---	---	---
North Hampton (17225E, 17225F, 17225C) ³	---	---	---
Pioneer Bank (17326B, 17326C, 17325H, 17325I)	13,648	12,955	46,938
Lisianski (17426C, 17326A, 17425I, 17325G)	788	749	3,306
Other (all other areas codes from Fisheries Chart No. 2 not listed above) ³	855,832	835,973	2,375,191
SUBTOTAL	994,697	965,409	2,842,195
Other areas (not in Fisheries Charts 1 & 2) (other mid-ocean and missing area fished codes)	15,772,615	15,715,660	40,543,039
TOTAL	24,193,720	23,536,443	59,238,628

³Due to low level of fishermen reporting and to preserve confidentiality, data for these fishing methods and areas pooled under their respective group totals.

Appendix G - FAD Catches by Island and species

Hawaii FADs

<i>SPECIES</i>	<i>A</i>	<i>B</i>	<i>C</i>	<i>D</i>	<i>E</i>	<i>F</i>	<i>G</i>	<i>KH</i>	<i>OTEC</i>	<i>QQ</i>	<i>RN</i>	<i>SS</i>	<i>TT</i>	<i>UU</i>	<i>VV</i>	<i>XX</i>	<i>ZZ</i>	<i>TOTAL</i>
Aku	--	--	732	*	464	841	283	--	*	245	--	*	1,224	180	8,209	132	--	12,310
Bigeye	--	--	377	--	--	*	--	--	*	--	--	--	*	--	724	--	--	1,101
Kawakawa	--	--	--	--	--	*	--	*	--	--	--	--	--	--	--	*	--	*
Keokeo	--	--	--	--	--	*	--	--	--	--	--	--	--	--	--	--	--	*
Tombo	--	*	12,682	--	168	--	--	3,665	--	--	437	--	887	1,102	2,158	--	--	21,099
Yellowfin	--	587	17,843	*	2,672	2,485	--	14,055	460	1,073	*	--	6,043	252	5,035	691	--	51,196
Tuna (misc.)	--	--	--	--	--	--	--	--	--	--	--	--	--	--	*	--	--	*
Black marlin	--	--	*	--	--	--	--	--	--	*	*	--	--	--	691	--	--	691
Blue marlin	--	--	8,969	--	--	5,978	*	*	1,454	--	*	--	*	*	9,451	2,152	--	28,004
Shortbill spearfish	--	*	632	--	--	603	*	--	*	--	--	--	*	*	365	--	--	1,600
Striped marlin	--	*	276	--	--	121	*	--	*	--	--	--	--	*	767	291	--	1,455
Swordfish	--	--	*	--	*	--	--	*	--	*	*	--	--	*	--	--	--	*
Kaku	--	--	--	--	--	--	--	--	--	*	--	--	--	--	--	--	--	*
Mahimahi	355	1,413	3,538	5,251	2,107	2,414	1,824	5,150	412	2,442	*	*	953	920	1,426	4,415	353	32,973
Ono	*	807	2,446	306	144	539	307	6,562	*	490	*	281	453	742	1,772	548	*	15,397
Kahala	--	*	--	--	--	*	--	--	--	--	--	--	--	*	*	--	--	*
Akule	--	--	*	--	--	--	*	--	--	--	--	--	--	--	--	--	--	*
Hahalalu	--	--	--	--	--	--	*	--	--	--	--	--	--	--	--	--	--	*
Opelu	--	--	*	--	--	--	--	--	--	--	--	--	--	--	--	--	--	*
Kawalea	--	--	*	--	--	--	--	--	--	--	--	--	--	--	--	--	--	*
Ulua (misc.)	--	--	--	*	--	--	--	--	--	*	--	--	--	--	--	--	--	*
Oceanic whitetip shark	--	--	*	--	--	--	--	--	--	--	--	--	--	--	--	--	--	*
Thresher shark	--	--	--	--	--	--	--	--	--	--	--	--	--	*	--	--	--	*
Shark (misc.)	--	--	*	--	--	--	--	--	--	--	--	--	--	--	*	--	--	*
Squid	--	--	--	--	--	--	*	*	--	--	--	--	--	--	--	--	--	*
Uku	--	*	--	--	--	--	--	--	--	--	--	--	--	--	*	--	--	*
TOTAL	355	2,807	47,495	5,557	5,555	12,981	2,414	29,432	2,326	4,250	437	281	9,560	3,196	30,598	8,229	353	165,826

Oahu FADs

<i>SPECIES</i>	<i>J</i>	<i>P</i>	<i>R</i>	<i>S</i>	<i>T</i>	<i>U</i>	<i>V</i>	<i>X</i>	<i>BO</i>	<i>CO</i>	<i>HH</i>	<i>II</i>	<i>LL</i>	<i>MM</i>	<i>TOTAL</i>
Aku	268	3,610	2,067	1,389	11,327	2,851	1,241	20,370	621	675	7,600	5,531	16,816	3,124	77,490
Bigeye	*	--	--	--	*	--	--	*	--	*	--	--	*	797	797
Kawakawa	--	*	*	60	--	--	60	--	--	--	--	--	--	--	120
Keokeo	--	--	--	*	--	--	*	--	--	--	--	--	--	--	*
Tombo	--	--	--	--	--	--	--	*	--	--	--	--	--	--	*
Yellowfin	1,312	1,658	2,143	3,809	577	2,603	2,516	9,299	3,652	2,922	2,974	2,767	6,194	10,002	52,428
Blue marlin	*	2,305	10,715	20,290	*	653	5,355	3,683	4,077	2,434	3,030	*	*	*	52,542
Shortbill spearfish	*	*	*	*	--	--	--	186	*	111	*	*	*	90	387
Striped marlin	*	*	557	1,021	--	*	297	--	347	*	177	*	--	126	2,525
Billfish (misc.)	--	--	--	--	--	--	--	*	--	--	--	--	--	--	*
Kaku	--	--	--	--	--	*	*	--	--	--	--	--	--	--	*
Mahimahi	1,331	6,099	1,145	1,957	4,142	12,415	1,748	17,655	6,929	4,224	8,123	18,556	11,012	13,993	109,329
Ono	*	180	193	646	169	634	622	1,532	653	294	419	813	271	577	7,003
Kahala	--	--	--	*	--	--	--	--	--	--	--	--	--	--	*
Uku	--	*	--	--	--	--	--	--	--	--	--	--	--	*	*
Akule	--	--	*	--	--	--	--	--	--	--	--	--	--	--	*
Hahalalu	--	--	--	*	--	--	--	--	--	--	--	--	--	--	*
Opelu	--	--	*	976	--	--	53	--	--	--	--	--	--	--	1,029
Kamanu	--	--	--	--	*	--	*	--	--	--	--	--	--	--	*
Aha	--	--	--	--	--	--	*	--	--	--	--	--	--	--	*
Nunu	--	--	--	--	--	--	*	--	--	--	--	--	--	--	*
Thresher shark	--	--	--	*	--	--	--	--	--	--	--	--	--	--	*
Thresher shark (fins)	--	--	--	*	--	--	--	--	--	--	--	--	--	--	*
TOTAL	2,911	13,852	16,820	30,148	16,215	19,156	11,892	52,725	16,279	10,660	22,323	27,667	34,293	28,709	303,650

*Due to low level of fishermen reporting and to preserve confidentiality, data for these FADs by species are not listed.

Maui, Kahoolawe, Lanai, and Molokai FADs

<i>SPECIES</i>	<i>I</i>	<i>K</i>	<i>M</i>	<i>N</i>	<i>O</i>	<i>Q</i>	<i>CC</i>	<i>DD</i>	<i>FF</i>	<i>HO</i>	<i>JJ</i>	<i>LA</i>	<i>MC</i>	<i>NL</i>	<i>T6</i>	<i>TOTAL</i>
Aku	*	596	326	--	360	226	270	223	*	4,984	*	68	563	*	*	7,616
Bigeye	--	--	--	--	--	--	--	--	--	--	*	--	--	*	--	*
Kawakawa	--	*	--	--	--	*	*	*	--	*	--	*	--	--	--	*
Yellowfin	*	259	494	--	306	372	1,508	*	201	2,027	410	*	551	1,063	--	7,191
Blue marlin	*	9,962	*	--	--	*	*	--	--	692	--	2,084	*	--	--	12,738
Sailfish	--	--	--	--	--	--	*	--	--	--	--	--	--	--	--	*
Shortbill spearfish	*	388	--	--	--	--	--	--	--	--	*	150	*	--	--	538
Striped marlin	--	1,009	--	--	--	--	*	*	--	*	--	--	*	*	--	1,009
Kaku	--	*	--	--	--	--	--	--	--	*	--	*	--	--	--	*
Mahimahi	428	3,868	3,419	*	2,310	2,361	4,228	6,218	3,565	9,733	915	2,660	3,645	1,080	*	44,430
Ono	353	973	173	*	162	*	307	469	161	1,344	*	376	319	227	*	4,864
Kahala	--	--	--	--	--	*	--	--	--	--	--	--	--	--	--	*
Kamanu	--	--	--	--	--	--	*	--	--	*	--	--	--	--	--	*
Shark (misc.)	--	*	--	--	--	--	--	--	--	*	--	--	--	--	--	*
TOTAL	781	17,055	4,412	*	3,138	2,959	6,313	6,910	3,927	18,780	1,325	5,338	5,078	2,370	*	78,386

Kauai FADs

<i>SPECIES</i>	<i>Z</i>	<i>AA</i>	<i>BB</i>	<i>CK</i>	<i>DK</i>	<i>EK</i>	<i>KK</i>	<i>PP</i>	<i>WK</i>	<i>TOTAL</i>
Aku	386	538	38	781	--	549	*	*	435	2,727
Bigeye	--	--	--	--	--	*	--	--	*	*
Kawakawa	*	*	*	*	*	--	--	*	*	*
Tombo	--	--	--	--	--	--	--	--	*	*
Yellowfin	1,649	18,879	4,312	8,752	*	4,225	15,210	14,119	5,239	72,385
Blue marlin	--	--	710	1,131	--	*	*	*	*	1,841
Shortbill spearfish	*	--	*	153	--	--	--	--	*	153
Striped marlin	*	--	*	250	--	--	--	--	--	250
Swordfish	--	--	--	--	--	--	--	*	--	*
Kaku	--	--	--	*	--	*	--	--	*	*
Mahimahi	690	1,713	2,374	3,650	290	1,958	930	430	3,498	15,533
Ono	101	462	764	899	*	663	734	154	174	3,951
Kahala	--	*	--	*	--	--	--	--	*	*
Uku	--	--	--	*	--	--	--	--	--	*
Akule	--	--	--	*	--	--	--	*	--	*
Opelu	--	*	--	*	--	--	--	*	--	*
Omilu	--	--	--	--	--	*	--	--	--	*
Ulua (misc.)	--	*	--	*	--	--	--	--	--	*
Thresher shark	--	*	--	--	--	--	--	*	--	*
Shark (misc.)	--	--	*	--	--	--	--	--	--	*
Squid	--	--	--	--	--	--	--	*	--	*
TOTAL	2,826	21,592	8,198	15,616	290	7,395	16,874	14,703	9,346	96,840

Other FADs

<i>SPECIES</i>	<i>MO</i>	<i>W1</i>	<i>W2</i>	<i>W3</i>	<i>W4</i>	<i>TOTAL</i>
Aku	3,053	*	*	1,297	*	4,350
Bigeye	*	*	51,373	*	*	51,373
Tombo	--	--	--	*	--	*
Yellowfin	2,457	*	104,846	159,766	*	267,069
Blue marlin	*	*	--	1,422	--	1,422
Shortbill spearfish	--	--	*	*	--	*
Striped marlin	--	--	--	*	--	*
Swordfish	--	*	--	--	*	*
Mahimahi	6,832	*	5,727	11,448	*	24,007
Ono	285	*	253	*	*	538
Kaku	--	--	--	*	--	*
Kamanu	--	--	--	*	--	*
Uku	--	*	--	--	--	*
Oceanic whitetip	--	--	--	*	--	*
Shark (misc.)	*	--	--	--	--	*
TOTAL	12,627	*	162,199	173,933	*	348,759

Appendix H - FAD Catches by Island, FAD and Fishing Trip Count

Island	FAD	Location	# Mon. on Station	Fishing Method											
				Trolling			Tuna Handline			Aku boat			Other		
				Lbs.	# Trips	Lbs./ Trip	Lbs.	# Trips	Lbs./ Trip	Lbs.	# Trips	Lbs./ Trip	Lbs.	# Trips	Lbs./ Trip
Hawaii	A	South Pt.	12.0	1,256	9	139.6	**								
	B	Miloli'i	9.6	2,507	59	42.5	588	10	58.8				**		
	C	Loa Pt.	12.0	18,468	291	63.5	29,648	136	218.0				555	11	50.5
	D	Kumukahi	8.7	6,189	85	72.8	**								
	E	Leleiwi	8.6	2,635	97	27.2	3,053	19	160.7						
	F	Kailua-Kona	12.0	12,230	278	44.0	806	9	89.6				**		
	G	Pepe'ekeo	9.5	2,962	58	51.1	**						861	15	57.4
	KH	Kahena	12.0	13,407	103	130.2	17,239	244	70.7						
	OT	Waikoloa Pt.	10.4	2,806	43	65.3	**								
	QQ	Makuu	10.8	4,092	92	44.5	**								
	RN	Palima Pt.	8.6	8,907	27	329.9	593	5	118.6						
	SS	Apua Pt.	12.0	467	9	51.9									
	TT	Kanewa'a	12.0	3,394	61	55.6	6,845	42	163.0						
	UU	Auau	12.0	2,249	58	38.8	2,429	10	242.9				**		
	VV	Kahalu'u	12.0	26,444	538	49.2	4,193	61	68.7				90	6	15.0
	XX	Puako	12.0	8,232	112	73.5									
ZZ	Waima Pt.	5.5	623	12	51.9										
Oahu	J	Waiale'e	5.0	3,514	55	63.9	**								
	P	Penguin Banks	12.0	11,523	82	140.5				**			**		
	R	Makaha	8.9	14,361	200	71.8	1,226	10	122.6	**			167	6	27.8
	S	Pokai Bay	12.0	29,023	451	64.4	320	9	35.6	**			1,020	21	48.6
	T	Makapu'u	11.4	6,274	64	98.0				**					
	U	Kane'ohe	11.5	19,241	173	111.2	**								
	V	Makua	12.0	11,242	232	48.5	742	17	43.6				53	10	5.3
	X	Kahuku	12.0	36,062	305	118.2	2,677	18	148.7	14,316	10	1,431.6			
	BO	Barbers Pt.	9.5	16,601	271	61.3	**								
	CO	Ka'ena Pt.	12.0	10,802	158	68.4	356	4	89.0						
	HH	Pearl Harbor	12.0	16,093	233	69.1	**			6,444	8	805.5			
	II	Hale'iwa	8.7	25,110	255	98.5	**			2,903	7	414.7			
	LL	Hau'ula	12.0	17,820	151	118.0	1,900	8	237.5	**					
	MM	Mokapu Pt.	10.7	24,240	196	123.7	4,600	14	328.6	**					
	T1	Waianae	12.0												

**Due to low level of fishermen reporting and to preserve confidentiality, data for these FADs by fishing methods are not listed.

Island	FAD	Location	# Mon. on Station	Fishing Method												
				Trolling			Tuna Handline			Aku boat			Other			
				Lbs.	# Trips	Lbs./ Trip	Lbs.	# Trips	Lbs./ Trip	Lbs.	# Trips	Lbs./ Trip	Lbs.	# Trips	Lbs./ Trip	
Maui County	I	Halona Pt.	8.7	1,703	38	44.8										
	K	Palaoa	11.0	17,116	411	41.6		**								
	M	Hana Bay	8.4	4,564	39	117.0										
	N	Cape Halawa	9.8	245	9	27.2										
	O	Kalaupapa	8.1	3,138	29	108.2										
	Q	Pauwela Pt.	9.8	3,254	77	42.3										
	CC	Ka'ena Pt.	9.0	7,551	126	59.9		**								
	DD	Opana Pt.	12.0	7,112	165	43.1								**		
	FF	Pukaulua Pt.	11.4	4,242	51	83.2										
	HO	Ho'olawa Pt.	12.0	18,616	217	85.8		**						**		
	JJ	Kamohio	9.0	1,684	37	45.5										
	LA	Lahaina	12.0	5,563	385	14.4								**		
	MC	Palaoa	8.0	5,597	106	52.8		**								
	NL	Nu'u	12.0	2,536	37	68.5										
	T2	Kolo Harbor	12.0													
	T3	Pala'au	12.0													
T6	Palaoa	12.0	243	4	60.8											
Kauai	Z	Kipukai	11.4	2,518	80	31.5	486	10	48.6							
	AA	Port Allen	12.0	7,914	119	66.5	13,873	29	478.4				**			
	BB	Moloa'a	12.0	8,432	68	124.0										
	CK	Makahu'ena Pt.	12.0	13,932	206	67.6	1,975	10	197.5			168	7	24.0		
	DK	Anahola	10.2	1,144	14	81.7		**								
	EK	Hanalei	12.0	6,374	119	53.6	1,249	12	104.1							
	KK	Waimea	12.0	13,312	95	140.1		**								
	PP	Koloa	10.2	5,198	48	108.3	9,875	21	470.2			474	6	79.0		
	WK	Wailua	12.0	6,575	90	73.1	3,798	13	292.2							