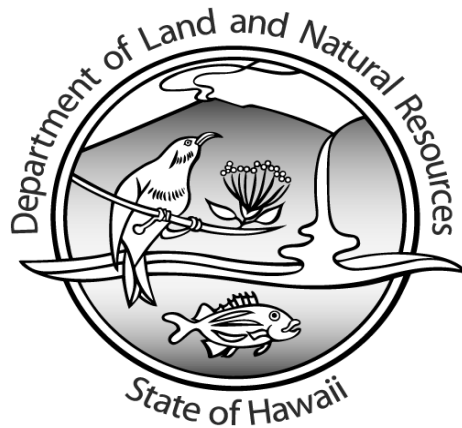


COMMERCIAL MARINE LANDINGS SUMMARY TREND REPORT
CALENDAR YEAR 2001



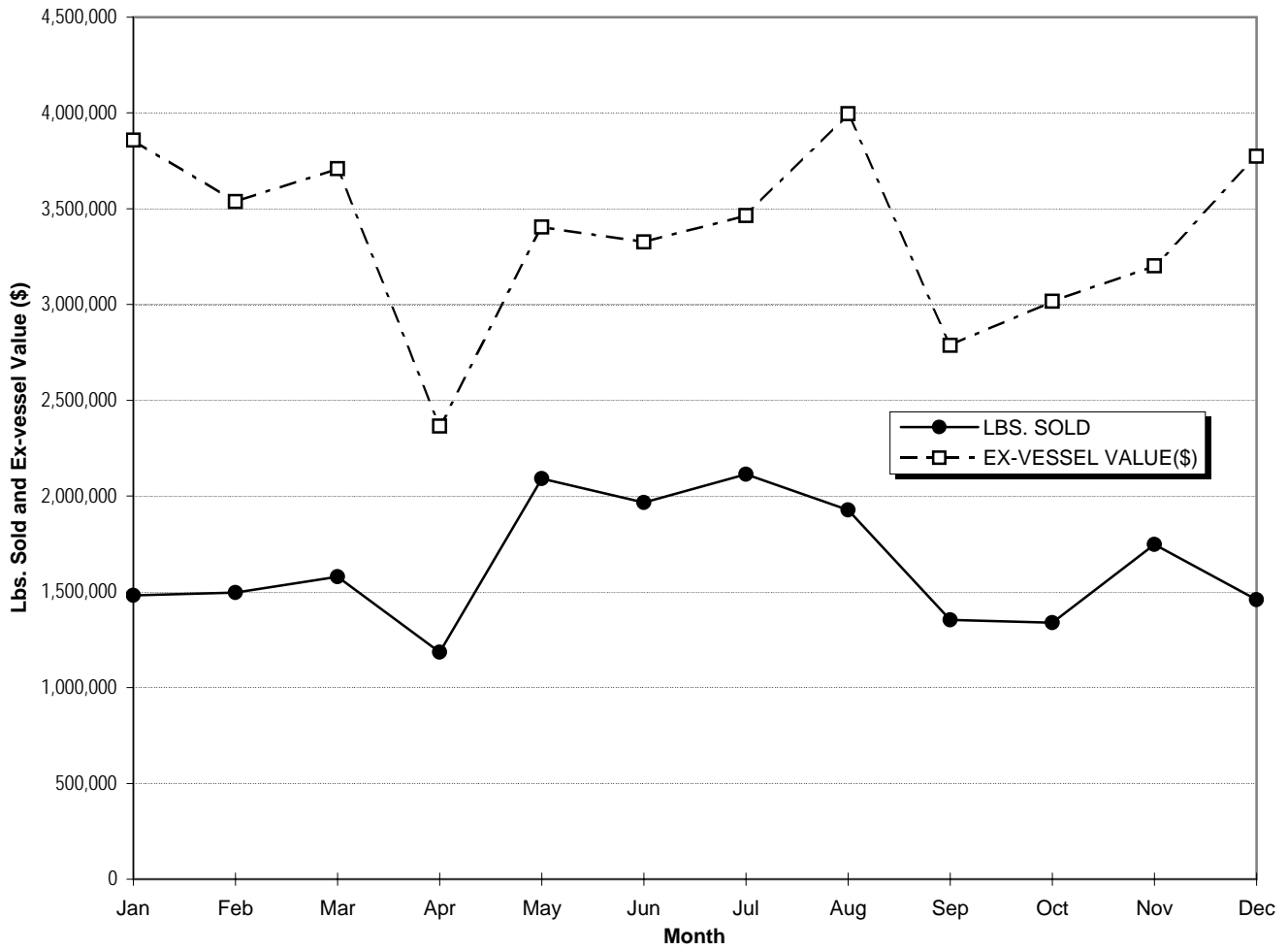
DIVISION OF AQUATIC RESOURCES
DEPARTMENT OF LAND AND NATURAL RESOURCES
STATE OF HAWAII

TABLE OF CONTENTS

I. CHARTS	Page No.
<i>A. TOTAL SEA LANDINGS</i>	
1. Annual Monthly Trends	1
2. Annual 5-year Trends	2
<i>B. SEA LANDINGS BY SPECIES GROUPS</i>	
1. Annual Monthly Trends	3
2. Annual 5-year Trends	4
<i>C. SEA LANDINGS BY FISHING METHOD</i>	
1. Annual Monthly Trends	5
2. Annual 5-year Trends	6
<i>D. SEA LANDINGS BY PORT</i>	
1. Annual Monthly Trends	7
2. Annual 5-year Trends	8
II. APPENDICES	
A. Sea Landings by Species	9
B. Pond Harvest by Species	10
C. Total Commercial Marine Landings	10
D. Sea Landings by Fishing Method	11
E. Sea Landings by Island	11
F. Sea Landings by Area Fished	11
G. FAD Catches by Island and Species	12
H. FAD Catches by Island, FAD and Fishing Trip Count	15

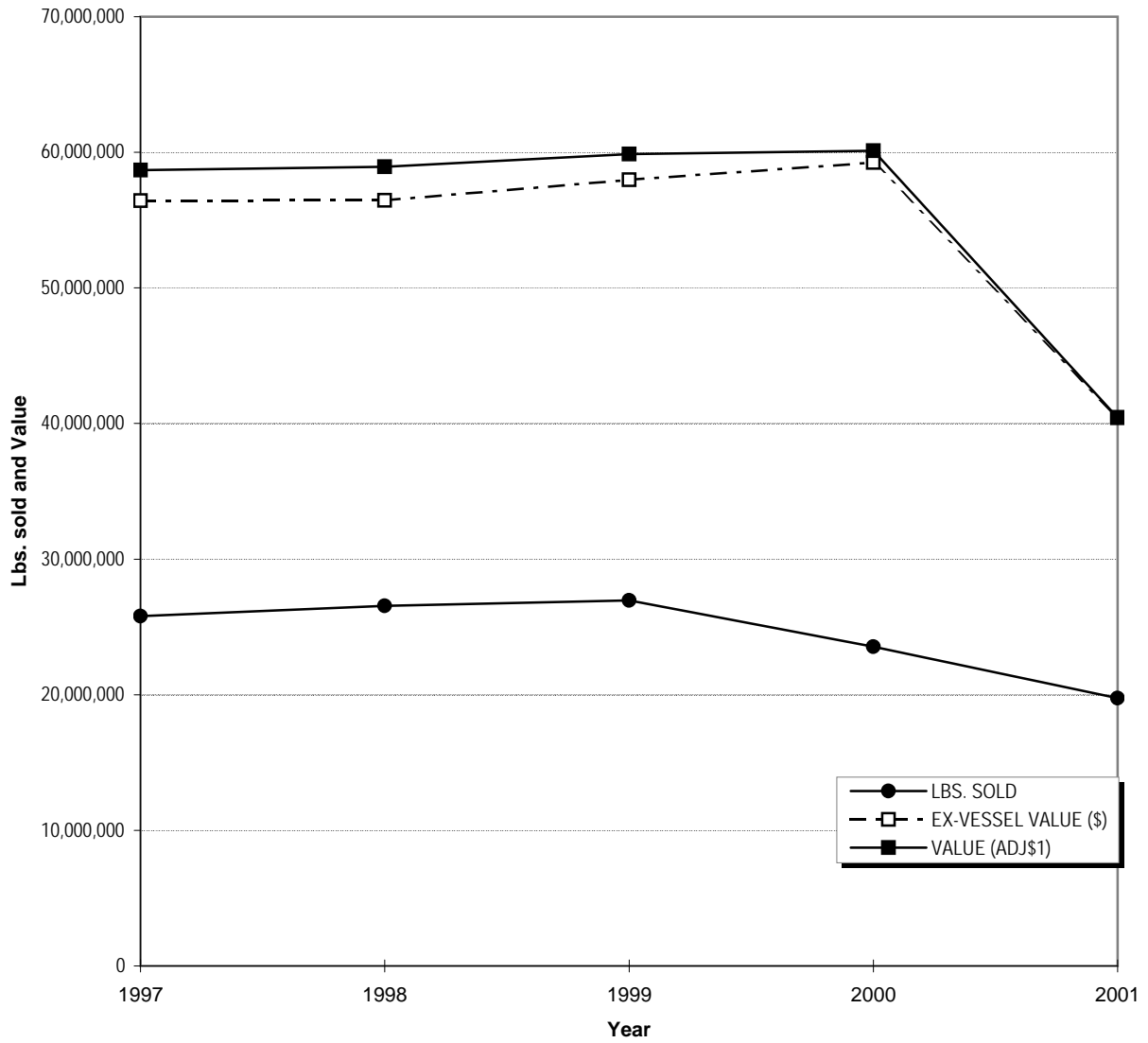
Note: Data incomplete due to late submission and processing of fish catch records.

**CHART A.1
TOTAL SEA LANDINGS ANNUAL MONTHLY TRENDS, 2001**



MONTH	LBS. SOLD	EX-VESSEL VALUE(\$)
<i>Jan</i>	1,481,810	3,857,713
<i>Feb</i>	1,496,356	3,537,563
<i>Mar</i>	1,579,528	3,708,523
<i>Apr</i>	1,184,591	2,365,800
<i>May</i>	2,091,424	3,403,929
<i>Jun</i>	1,966,886	3,325,799
<i>Jul</i>	2,113,931	3,464,359
<i>Aug</i>	1,926,661	3,996,311
<i>Sep</i>	1,353,429	2,786,449
<i>Oct</i>	1,338,289	3,016,461
<i>Nov</i>	1,747,198	3,201,521
<i>Dec</i>	1,458,336	3,773,997
TOTAL	19,738,439	40,438,425

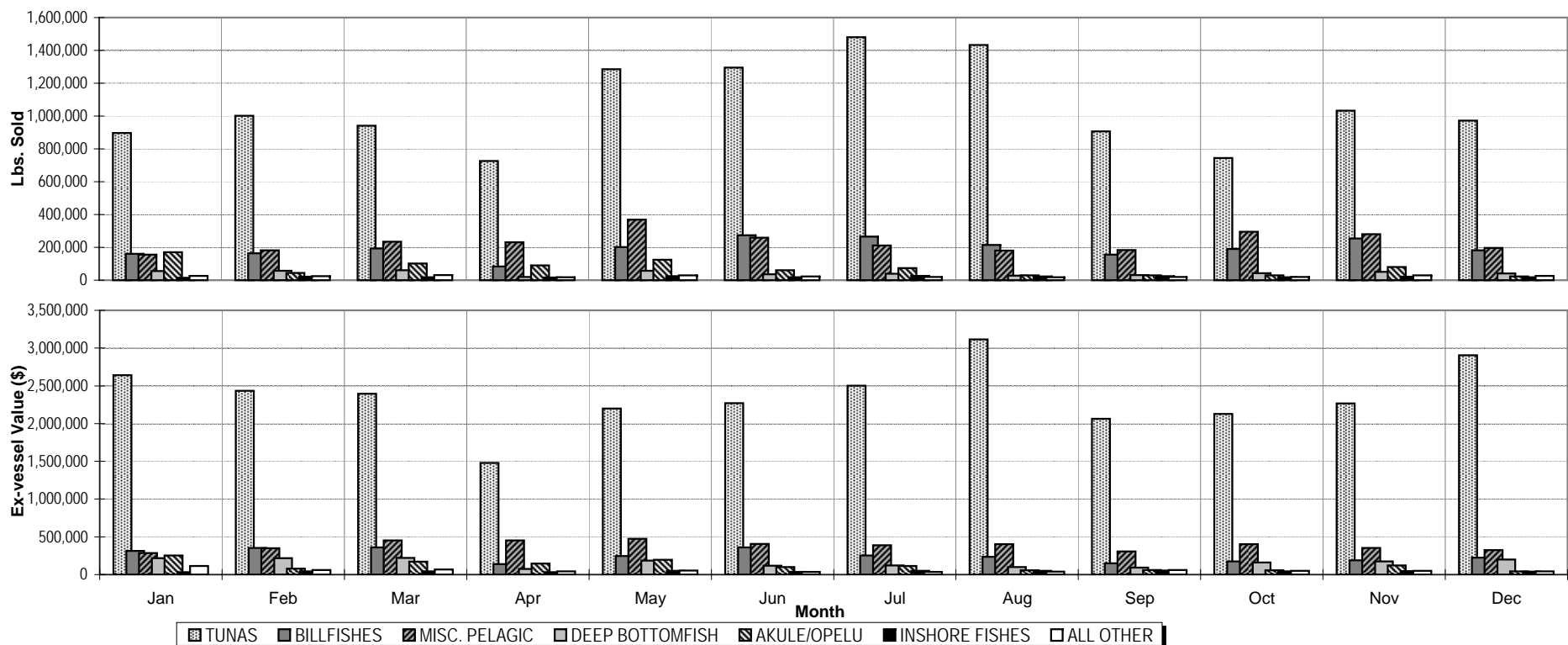
**CHART A.2
TOTAL SEA LANDINGS ANNUAL 5 - YEAR TRENDS, 1997 - 2001**



YEAR	LBS. SOLD	EX-VESSEL VALUE (\$)	HCPI¹	VALUE (ADJ\$¹)
1997	25,792,857	56,425,781	172.2	58,686,745
1998	26,558,869	56,464,083	171.6	58,931,919
1999	26,966,241	57,965,958	173.4	59,871,413
2000	23,536,443	59,238,628	176.5	60,111,265
2001	19,738,439	40,438,425	179.1	40,438,425

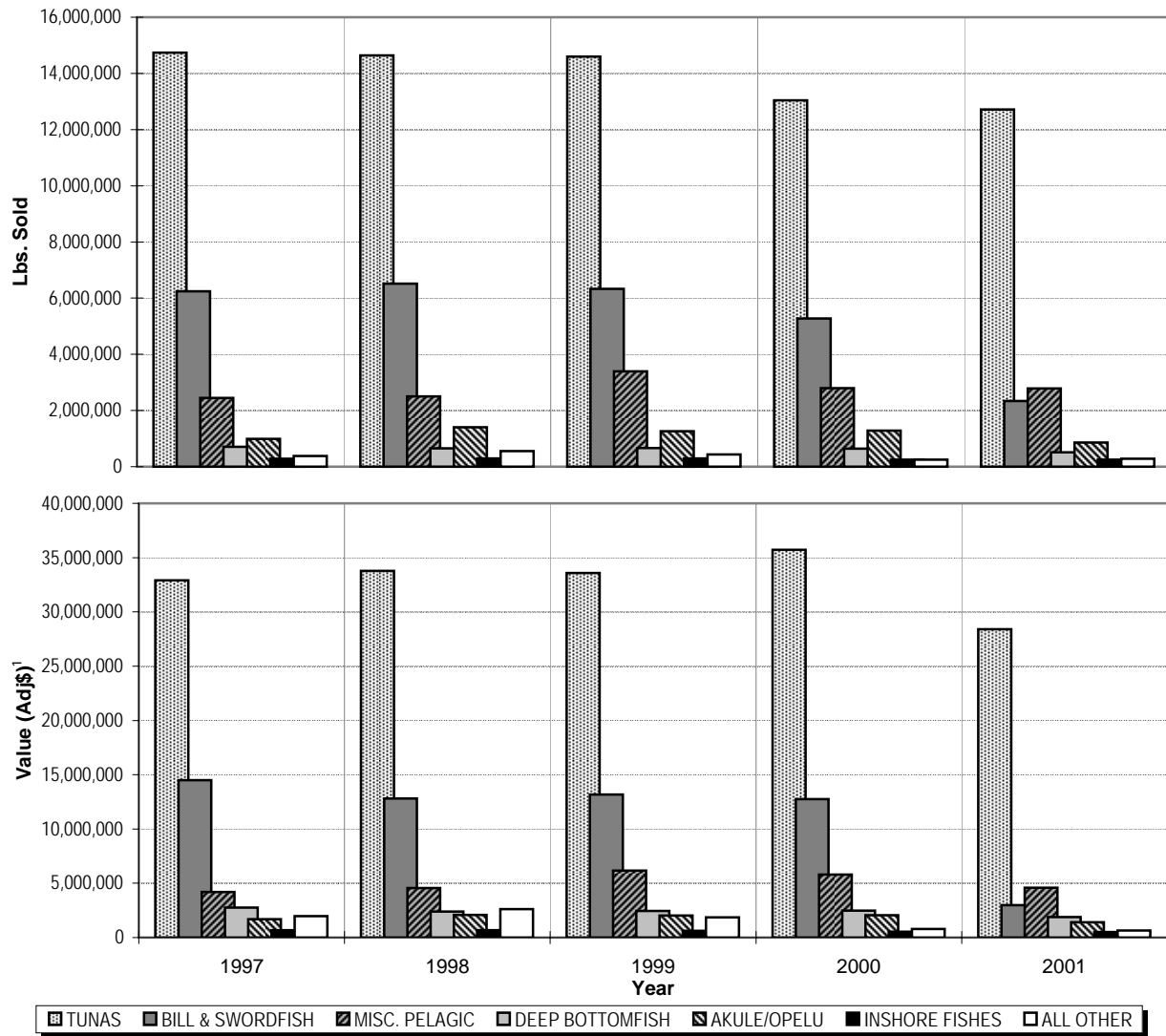
¹ Honolulu Consumer Price Index (all wage earners)

**CHART B.1
SEA LANDINGS BY SPECIES GROUP ANNUAL MONTHLY TRENDS, 2001**



Calendar Year 2001		MONTH												YEAR
SPECIES GROUP		Jan	Feb	Mar	Apr	May	Jun	Jul	Aug	Sep	Oct	Nov	Dec	TOTAL
TUNA	Lbs. Sold	896,148	1,001,416	940,200	725,778	1,285,978	1,295,122	1,479,601	1,433,541	905,895	743,492	1,032,365	972,705	12,712,241
	Ex-vessel Value (\$)	2,641,989	2,434,219	2,395,897	1,479,474	2,198,581	2,269,258	2,502,935	3,116,481	2,061,943	2,128,826	2,265,906	2,904,630	28,400,136
BILLFISH	Lbs. Sold	161,429	164,600	193,160	84,359	201,329	273,598	265,071	214,996	155,816	189,365	254,594	181,964	2,340,281
	Ex-vessel Value(\$)	312,988	354,295	359,386	137,670	244,163	359,893	252,516	234,315	151,332	175,248	189,624	222,867	2,994,299
MISC. PELAGIC	Lbs. Sold	155,501	182,491	235,087	231,874	369,275	259,820	211,597	180,685	184,421	294,363	279,770	196,239	2,781,123
	Ex-vessel Value(\$)	286,770	349,694	451,510	453,932	474,767	407,295	388,956	402,996	306,051	401,953	351,616	323,163	4,598,702
DEEP BOTTOMFISH	Lbs. Sold	56,113	57,039	59,840	19,220	57,257	35,647	38,952	27,158	31,631	42,460	50,167	41,011	516,495
	Ex-vessel Value (\$)	215,903	216,039	219,509	73,199	186,696	117,107	119,440	99,632	93,195	160,456	174,814	199,877	1,875,865
AKULE/OPELU	Lbs. Sold	170,702	44,575	101,764	89,388	124,193	61,122	73,266	29,386	30,268	29,577	80,350	22,817	857,408
	Ex-vessel Value (\$)	253,798	79,121	170,924	144,918	197,250	100,949	113,251	56,187	59,313	56,634	122,920	42,746	1,398,010
INSHORE FISH	Lbs. Sold	15,196	21,292	18,586	16,545	24,401	17,832	25,977	23,123	25,000	18,668	20,744	17,783	245,147
	Ex-vessel Value (\$)	33,044	44,476	42,107	32,609	49,982	35,818	51,411	48,355	53,362	43,961	45,824	38,050	519,000
ALL OTHER	Lbs. Sold	26,721	24,943	30,891	17,427	28,991	23,745	19,467	17,772	20,398	20,364	29,208	25,817	285,744
	Ex-vessel Value (\$)	113,222	59,720	69,192	43,998	52,491	35,480	35,850	38,345	61,253	49,382	50,818	42,664	652,414
TOTAL	Lbs. Sold	1,481,810	1,496,356	1,579,528	1,184,591	2,091,424	1,966,886	2,113,931	1,926,661	1,353,429	1,338,289	1,747,198	1,458,336	19,738,439
	Ex-vessel Value (\$)	3,857,713	3,537,563	3,708,523	2,365,800	3,403,929	3,325,799	3,464,359	3,996,311	2,786,449	3,016,461	3,201,521	3,773,997	40,438,425

CHART B.2
SEA LANDINGS BY SPECIES GROUPS ANNUAL 5 - YEAR TRENDS, 1997 - 2001

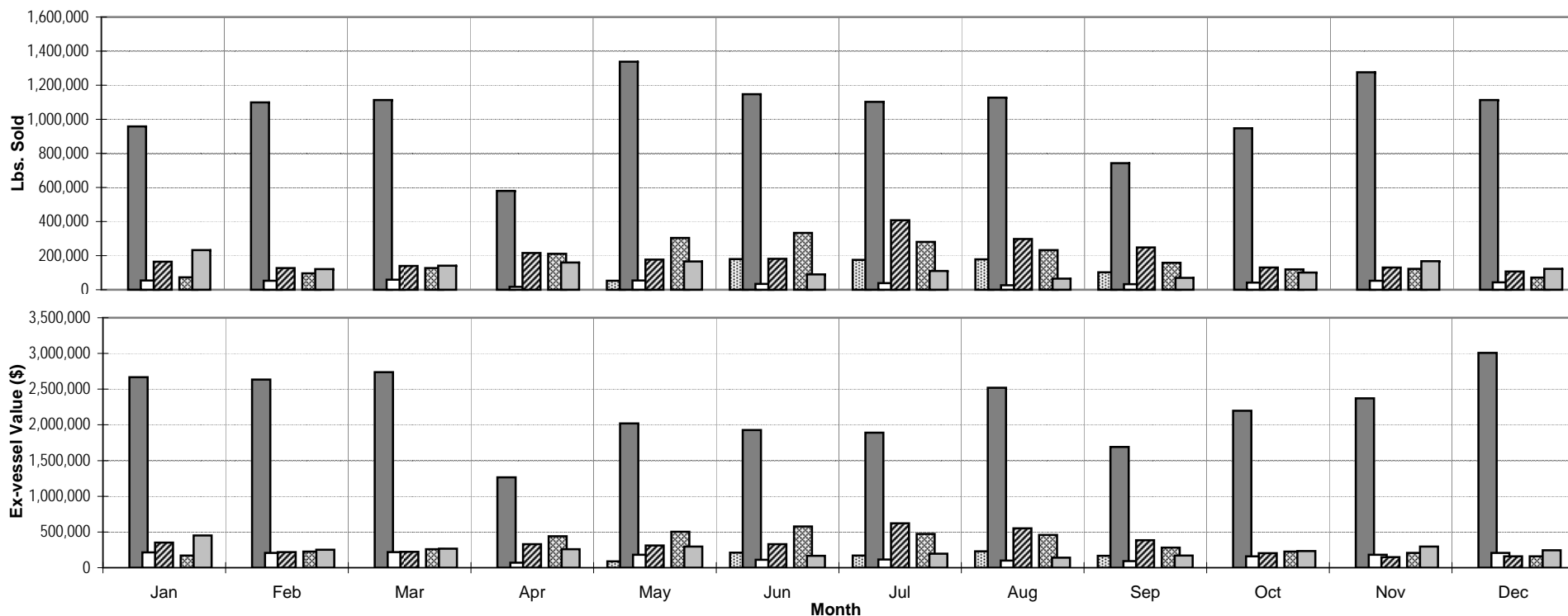


TUNAS
 BILL & SWORDFISH
 MISC. PELAGIC
 DEEP BOTTOMFISH
 AKULE/OPELU
 INSHORE FISHES
 ALL OTHER

<i>Calendar Year</i>		<i>YEAR</i>				
<i>SPECIES GROUP</i>		<i>1997</i>	<i>1998</i>	<i>1999</i>	<i>2000</i>	<i>2001</i>
TUNA	<i>Lbs. Sold</i>	14,738,122	14,638,320	14,592,801	13,036,955	12,712,241
	<i>Value (Adj\$)¹</i>	32,904,502	33,791,177	33,568,120	35,719,260	28,400,136
BILL & SWORDFISH	<i>Lbs. Sold</i>	6,244,946	6,519,415	6,329,647	5,274,429	2,340,281
	<i>Value (Adj\$)¹</i>	14,501,223	12,816,017	13,161,125	12,765,051	2,994,299
MISC. PELAGIC	<i>Lbs. Sold</i>	2,448,200	2,500,289	3,392,696	2,796,573	2,781,123
	<i>Value (Adj\$)¹</i>	4,190,892	4,562,768	6,169,753	5,792,375	4,598,702
DEEP BOTTOMFISH	<i>Lbs. Sold</i>	706,314	653,261	665,271	636,570	516,495
	<i>Value (Adj\$)¹</i>	2,762,888	2,399,198	2,455,814	2,464,023	1,875,865
AKULE/OPELU	<i>Lbs. Sold</i>	992,632	1,398,722	1,258,240	1,287,173	857,408
	<i>Value (Adj\$)¹</i>	1,689,633	2,082,837	2,037,075	2,049,269	1,398,010
INSHORE FISH	<i>Lbs. Sold</i>	279,810	291,347	289,214	251,701	245,147
	<i>Value (Adj\$)¹</i>	675,019	667,775	628,418	533,012	519,000
ALL OTHER	<i>Lbs. Sold</i>	382,833	557,515	438,372	253,042	285,744
	<i>Value (Adj\$)¹</i>	1,962,588	2,612,148	1,851,109	788,275	652,414
TOTAL	<i>Lbs. Sold</i>	25,792,857	26,558,869	26,966,241	23,536,443	19,738,439
	<i>Value (Adj\$)¹</i>	58,686,745	58,931,919	59,871,413	60,111,265	40,438,425

¹ Honolulu Consumer Price Index (all wage earners)

**CHART C.1
SEA LANDINGS BY FISHING METHOD ANNUAL MONTHLY TRENDS, 2001**

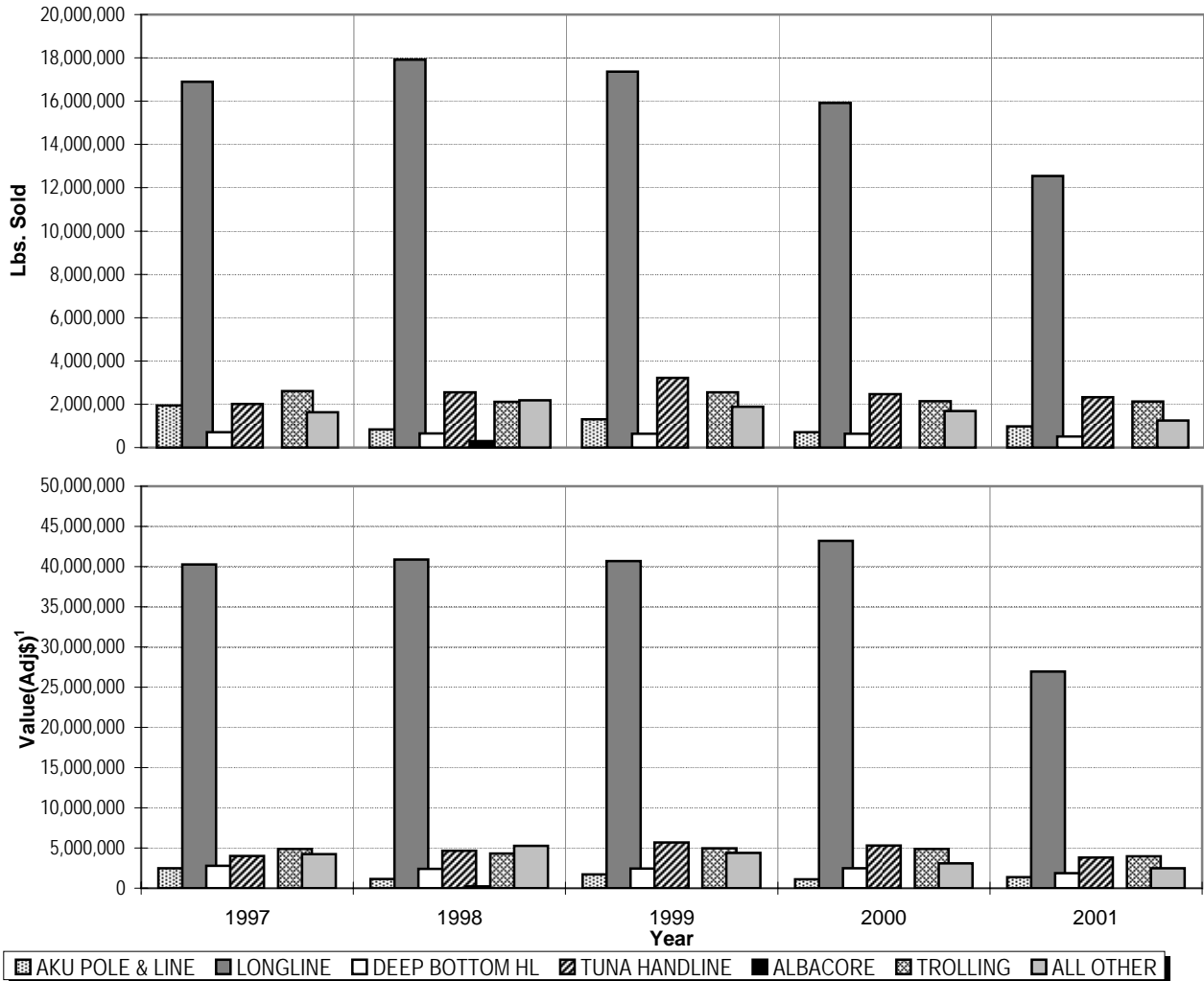


AKU POLE & LINE
 LONGLINE
 DEEP BOTTOM HL
 TUNA HANDLINE
 ALBACORE TROLL
 TROLL
 ALL OTHER

<i>Calendar Year 2001</i>		<i>MONTH</i>												<i>YEAR TOTAL</i>
METHOD		<i>Jan</i>	<i>Feb</i>	<i>Mar</i>	<i>Apr</i>	<i>May</i>	<i>Jun</i>	<i>Jul</i>	<i>Aug</i>	<i>Sep</i>	<i>Oct</i>	<i>Nov</i>	<i>Dec</i>	
AKU POLE & LINE	<i>Lbs. Sold</i>	*	*	*	*	52,873	179,655	174,822	177,890	102,428	*	*	*	687,668
	<i>Ex-vessel Value (\$)</i>	*	*	*	*	89,836	210,414	168,344	228,224	165,607	*	*	*	862,425
LONGLINE	<i>Lbs. Sold</i>	957,913	1,098,703	1,113,595	580,502	1,338,713	1,147,849	1,101,627	1,126,740	743,089	946,521	1,276,205	1,112,554	12,544,011
	<i>Ex-vessel Value (\$)</i>	2,668,391	2,635,166	2,739,678	1,264,575	2,021,750	1,928,499	1,890,190	2,518,587	1,690,798	2,199,072	2,369,947	3,006,535	26,933,189
DEEP BOTTOM HL	<i>Lbs. Sold</i>	54,286	52,934	58,590	17,128	54,105	33,782	38,299	26,741	32,792	41,361	52,274	43,958	506,250
	<i>Ex-vessel Value (\$)</i>	215,411	208,113	219,563	71,016	182,191	112,268	116,492	101,143	93,372	159,532	180,421	206,138	1,865,661
TUNA HANDLINE	<i>Lbs. Sold</i>	164,627	126,705	139,458	215,664	176,250	181,994	407,842	298,384	247,578	130,328	129,925	107,153	2,325,908
	<i>Ex-vessel Value (\$)</i>	350,303	216,630	222,753	330,391	310,580	329,449	619,914	550,327	384,005	201,862	146,675	159,315	3,822,204
ALBACORE TROLL	<i>Lbs. Sold</i>	0	0	0	0	0	0	0	0	0	0	0	0	0
	<i>Ex-vessel Value (\$)</i>	0	0	0	0	0	0	0	0	0	0	0	0	0
TROLL	<i>Lbs. Sold</i>	72,970	96,314	126,732	211,575	303,344	333,846	281,024	231,882	157,767	120,030	121,797	72,053	2,129,334
	<i>Ex-vessel Value (\$)</i>	171,223	226,282	258,759	440,921	503,611	577,655	473,150	457,300	281,180	224,710	207,885	157,655	3,980,332
ALL OTHER	<i>Lbs. Sold</i>	232,014	121,700	141,153	159,722	166,139	89,760	110,317	65,024	69,775	100,049	166,997	122,618	1,545,268
	<i>Ex-vessel Value (\$)</i>	452,384	251,372	267,770	258,897	295,961	167,514	196,269	140,730	171,486	231,284	296,594	244,353	2,974,614
TOTAL	<i>Lbs. Sold</i>	1,481,810	1,496,356	1,579,528	1,184,591	2,091,424	1,966,886	2,113,931	1,926,661	1,353,429	1,338,289	1,747,198	1,458,336	19,738,439
	<i>Ex-vessel Value (\$)</i>	3,857,713	3,537,563	3,708,523	2,365,800	3,403,929	3,325,799	3,464,359	3,996,311	2,786,449	3,016,461	3,201,521	3,773,997	40,438,425

*Data for these fishing methods pooled under "All Other" to preserve confidentiality

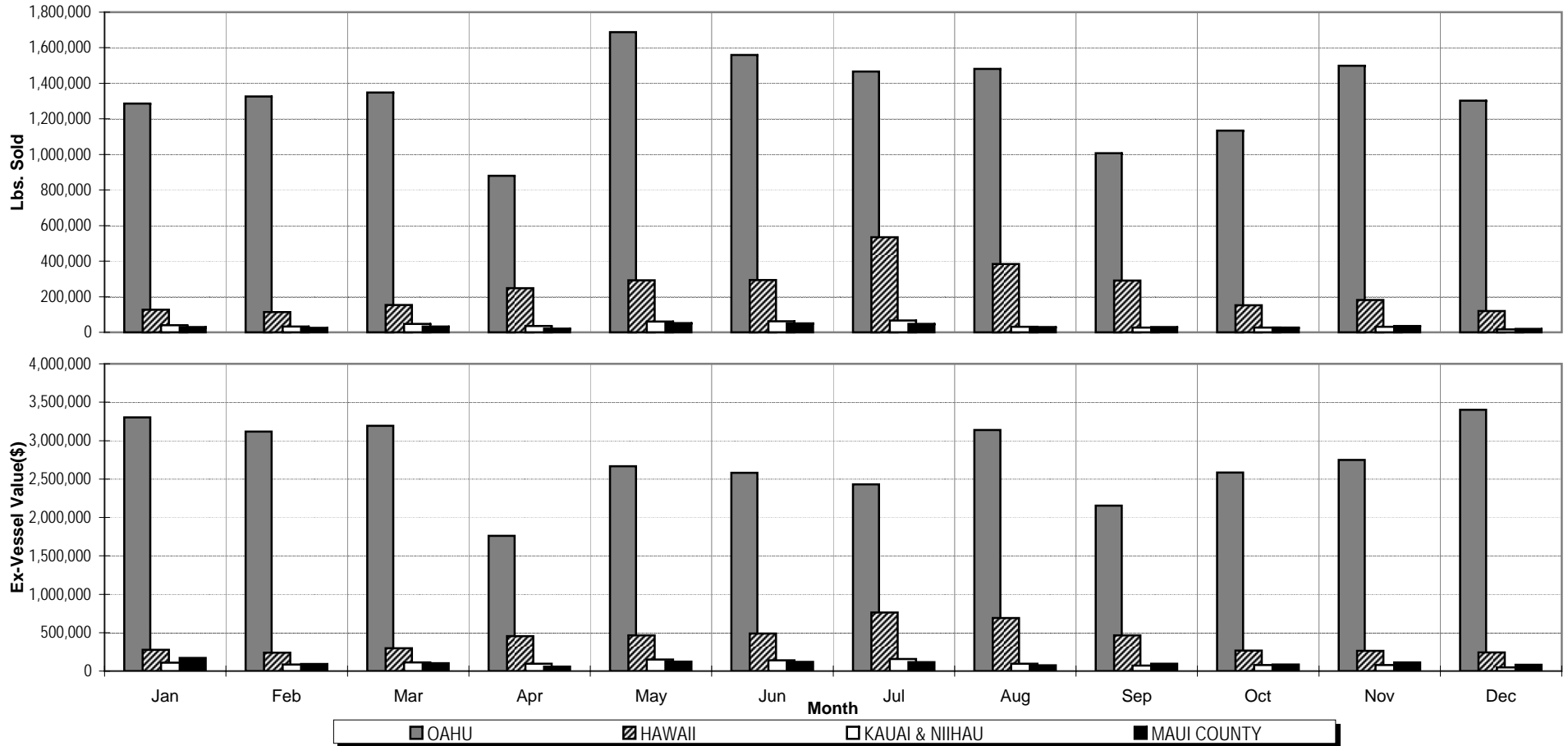
CHART C.2
SEA LANDINGS FISHING METHOD ANNUAL 5 - YEAR TRENDS, 1997 - 2001



<i>Calendar Year</i>		<i>YEAR</i>				
<i>FISHING METHOD</i>		<i>1997</i>	<i>1998</i>	<i>1999</i>	<i>2000</i>	<i>2001</i>
AKU POLE & LINE	<i>Lbs. Sold</i>	1,937,321	842,085	1,307,402	702,370	979,419
	<i>Value (Adj\$)¹</i>	2,489,136	1,154,783	1,724,364	1,110,605	1,365,415
LONGLINE	<i>Lbs. Sold</i>	16,893,051	17,923,019	17,365,723	15,918,294	12,544,011
	<i>Value (Adj\$)¹</i>	40,281,549	40,875,211	40,669,328	43,214,800	26,933,189
DEEP BOTTOM HL	<i>Lbs. Sold</i>	714,007	645,279	643,291	635,228	506,250
	<i>Value (Adj\$)¹</i>	2,804,628	2,412,837	2,453,863	2,492,405	1,865,661
TUNA HANDLINE	<i>Lbs. Sold</i>	2,006,090	2,555,058	3,216,382	2,463,578	2,325,908
	<i>Value (Adj\$)¹</i>	4,017,262	4,658,847	5,696,743	5,305,842	3,822,204
ALBACORE	<i>Lbs. Sold</i>	*	303,214	0	0	0
	<i>Value (Adj\$)¹</i>	*	235,836	0	0	0
TROLLING	<i>Lbs. Sold</i>	2,608,497	2,112,905	2,546,962	2,133,396	2,129,334
	<i>Value (Adj\$)¹</i>	4,869,335	4,317,317	4,944,780	4,881,423	3,980,332
ALL OTHER	<i>Lbs. Sold</i>	1,633,891	2,177,309	1,886,481	1,683,577	1,253,517
	<i>Value (Adj\$)¹</i>	4,224,835	5,277,088	4,382,336	3,106,191	2,471,625
TOTAL	<i>Lbs. Sold</i>	25,792,857	26,558,869	26,966,241	23,536,443	19,738,439
	<i>Value (Adj\$)¹</i>	58,686,745	58,931,919	59,871,413	60,111,265	40,438,425

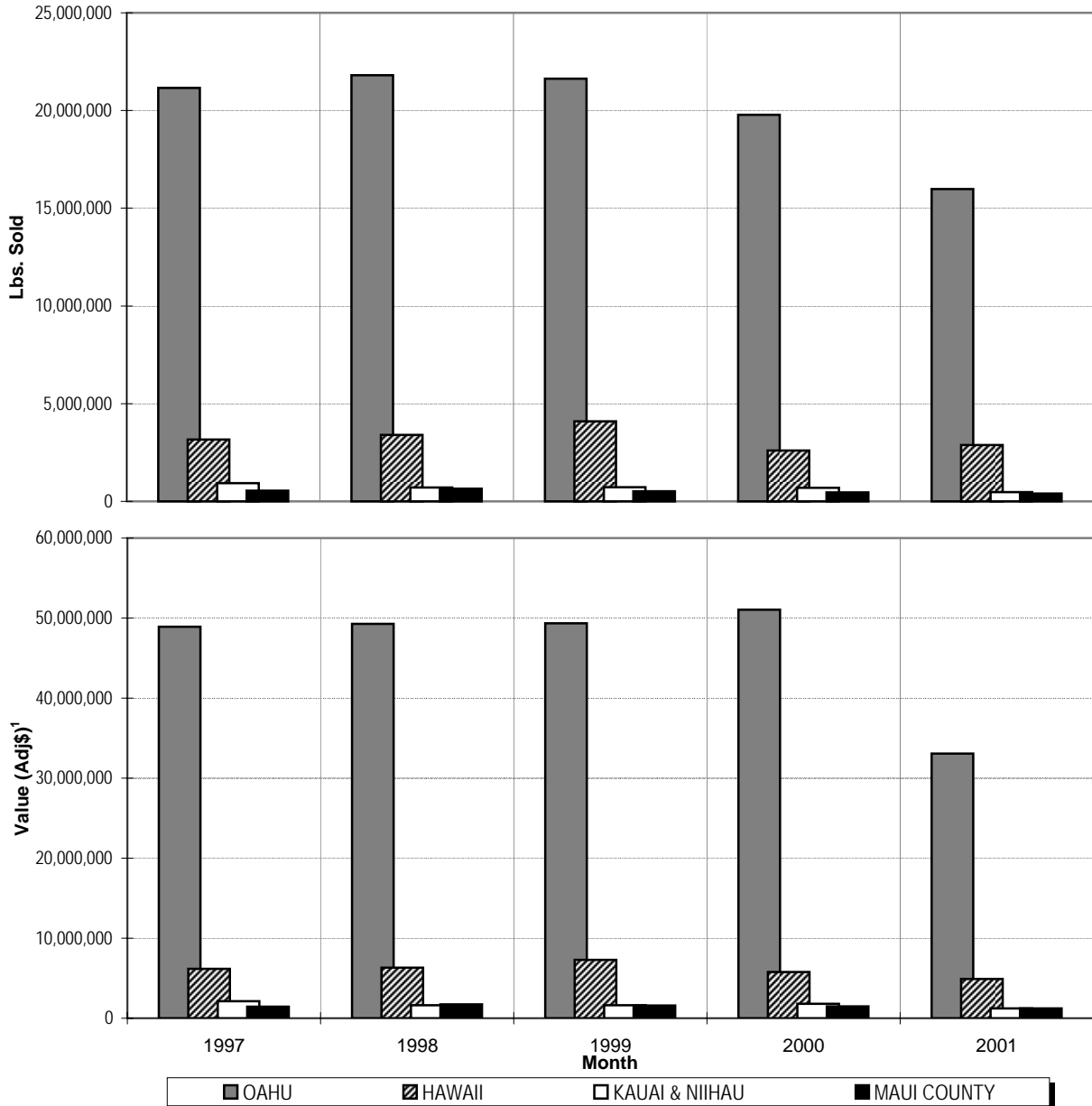
¹ Honolulu Consumer Price Index (all wage earners)

**CHART D.1
SEA LANDINGS BY PORT ANNUAL MONTHLY TRENDS, 2001**



Calendar Year 2001		Month												
PORT		Jan	Feb	Mar	Apr	May	Jun	Jul	Aug	Sep	Oct	Nov	Dec	TOTAL
OAHU	<i>Lbs. Sold</i>	1,285,543	1,325,301	1,347,532	880,589	1,688,039	1,559,733	1,466,178	1,480,692	1,006,871	1,134,478	1,498,940	1,302,262	15,976,158
	<i>Ex-vessel Value (\$)</i>	3,302,386	3,119,498	3,192,551	1,759,983	2,667,326	2,579,766	2,429,479	3,136,777	2,153,874	2,585,960	2,748,329	3,401,534	33,077,462
HAWAII	<i>Lbs. Sold</i>	126,268	113,816	153,035	248,508	292,004	294,552	533,868	384,444	290,166	151,602	181,771	119,715	2,889,749
	<i>Ex-vessel Value (\$)</i>	276,422	239,847	298,723	453,115	463,537	487,336	762,452	690,045	465,459	266,163	263,861	242,615	4,909,575
KAUAI & NIIHAU	<i>Lbs. Sold</i>	39,784	32,591	46,700	35,093	59,866	62,040	66,638	31,604	27,287	26,232	31,448	16,507	475,790
	<i>Ex-vessel Value (\$)</i>	108,077	85,946	113,878	95,119	151,230	139,555	157,426	95,958	71,898	79,334	77,525	48,430	1,224,375
MAUI COUNTY	<i>Lbs. Sold</i>	30,215	24,648	32,261	20,401	51,515	50,561	47,247	29,921	29,105	25,977	35,039	19,852	396,742
	<i>Ex-vessel Value (\$)</i>	170,828	92,272	103,371	57,583	121,836	119,143	115,003	73,531	95,218	85,005	111,806	81,417	1,227,013
TOTAL	<i>Lbs. Sold</i>	1,481,810	1,496,356	1,579,528	1,184,591	2,091,424	1,966,886	2,113,931	1,926,661	1,353,429	1,338,289	1,747,198	1,458,336	19,738,439
	<i>Ex-vessel Value (\$)</i>	3,857,713	3,537,563	3,708,523	2,365,800	3,403,929	3,325,799	3,464,359	3,996,311	2,786,449	3,016,461	3,201,521	3,773,997	40,438,425

**CHART D.2
SEA LANDINGS BY PORT ANNUAL 5-YEAR TRENDS, 1997 - 2001**



<i>Calendar Year</i>		YEAR				
PORT		1997	1998	1999	2000	2001
OAHU	<i>Lbs. Sold</i>	21,160,733	21,800,083	21,624,727	19,788,287	15,976,158
	<i>Value (Adj\$)¹</i>	48,932,699	49,278,213	49,341,232	51,043,910	33,077,462
HAWAII	<i>Lbs. Sold</i>	3,160,389	3,407,505	4,096,232	2,603,471	2,889,749
	<i>Value (Adj\$)¹</i>	6,165,823	6,312,533	7,305,131	5,783,495	4,909,575
KAUAI & NIIHAU	<i>Lbs. Sold</i>	927,797	706,076	729,093	690,308	475,790
	<i>Value (Adj\$)¹</i>	2,130,404	1,619,948	1,634,338	1,816,732	1,224,375
MAUI COUNTY	<i>Lbs. Sold</i>	543,938	645,205	516,189	454,377	396,742
	<i>Value (Adj\$)¹</i>	1,457,820	1,721,226	1,590,712	1,467,128	1,227,013
TOTAL	<i>Lbs. Sold</i>	25,792,857	26,558,869	26,966,241	23,536,443	19,738,439
	<i>Value (Adj\$)¹</i>	58,686,745	58,931,919	59,871,413	60,111,265	40,438,425

¹ Honolulu Consumer Price Index (all wage earners)

APPENDICES
Statistical Tables
Calendar 2001

Appendix A - Sea Landings by Species

SPECIES	LBS. LANDED	LBS. SOLD	VALUE(\$)	SPECIES	LBS. LANDED	LBS. SOLD	VALUE(\$)
TUNAS				AKULE/OPELU			
Aku	1,534,748	1,447,951	1,776,938	Akule	669,886	599,725	948,807
Bigeye	4,674,742	4,630,315	14,743,883	Hahalalu	60,083	52,416	72,819
Bluefin ²	---	---	---	Opelu	213,492	205,220	376,365
Kawakawa	10,106	7,035	8,251	Opelu Mama ²	---	---	---
Keokeo	282	104	142	SUBTOTAL	943,461	857,361	1,397,990
Tombo	2,850,567	2,834,273	3,122,760	JACKS			
Yellowfin	3,884,851	3,785,448	8,735,280	Butaguchi	29,939	27,248	47,666
Unclassified	7,290	7,115	12,882	Dobe	721	721	1,512
SUBTOTAL	12,962,586	12,712,241	28,400,136	Gunkan	424	414	632
BILLFISHES & SWORDFISH				Kamanu	3,010	2,493	3,710
Black marlin	17,504	16,974	15,239	Kihikihi	419	407	687
Blue marlin	1,146,821	967,774	821,570	Lae	493	425	716
Sailfish	11,692	10,733	9,678	Menpachi (sasa)	252	215	321
Shortbill spearfish	247,211	229,123	196,885	Omaka ²	---	---	---
Striped marlin	831,877	796,666	884,877	Omilu	3,018	2,177	4,220
Swordfish	313,535	313,126	1,058,864	Paopao ²	---	---	---
Unclassified	5,885	5,885	7,187	Papa	1,623	1,414	2,743
SUBTOTAL	2,574,525	2,340,281	2,994,299	White	10,002	8,766	14,160
MISC. PELAGIC FISHES				Unclass./misc. ²	23,678	18,408	37,600
Kaku	22,602	21,144	13,209	SUBTOTAL	73,579	62,688	113,969
Mahimahi	1,079,184	998,169	1,821,895	INSHORE FISHES			
Mola mola	346	346	72	<i>Parrotfishes</i>			
Monchong	217,923	217,668	315,551	Panuhunu	805	736	2,044
Ono	884,398	790,823	1,441,136	Uhu	20,932	19,882	49,836
Opah	640,803	640,470	836,290	<i>Goatfishes</i>			
Walu	112,642	112,503	170,550	Kumu	4,509	4,189	27,370
SUBTOTAL	2,957,898	2,781,123	4,598,702	Malu	119	107	322
DEEP BOTTOMFISHES				Moano	3,017	2,562	9,350
Alfonsin ²	---	---	---	Moana kali	915	729	4,563
Ehu	35,465	32,161	120,858	Munu	147	138	932
Golden kale	105	86	202	Weke	22,227	21,450	42,420
Hapuupuu	36,739	34,645	130,593	Weke ula	12,146	10,697	32,367
Hauliuli ²	---	---	---	<i>Surgeonfishes</i>			
Hogo	2,165	1,906	8,110	Kala	24,427	24,006	29,629
Kahala	14,530	1,373	1,568	Kole	1,892	1,581	3,594
Kalekale	15,368	13,537	40,262	Maiko	4,592	4,571	3,158
Lehi	10,452	9,505	27,808	Manini	11,889	11,553	26,146
Opakapaka	157,448	148,798	648,884	Naenae	7,439	7,436	7,200
Randall snapper ²	---	---	---	Opelu kala	4,273	4,009	3,504
Taape	47,598	41,529	42,939	Pakuikui	341	307	397
Ukikiki (gindai)	5,174	4,307	12,319	Palani	45,688	45,283	58,602
Uku	112,228	105,332	255,588	Pualu	5,565	5,545	7,211
Ulaula (onaga)	131,000	123,301	586,685	<i>Damselfishes</i>			
Yellow-tail kale ²	---	---	---	Kupipi	142	137	241
SUBTOTAL	568,272	516,480	1,875,816	Maomao	1,755	1,736	3,404
				<i>Squirrelfishes</i>			
				Alaihi	249	243	434
				Uu	35,396	33,286	106,320
				Uukanipo	85	68	201

²Due to low level of fishermen reporting and to preserve confidentiality, data for these species are pooled under their respective species group unclassified/miscellaneous or the Unclass./Misc. category.

SPECIES	LBS. LANDED	LBS. SOLD	VALUE(\$)
INSHORE FISHES(cont.)			
<i>Wrasses</i>			
Aawa	2,300	2,172	2,419
Ea	164	148	277
Hilu	159	152	399
Hinalea	396	387	506
Kupoupou	119	118	418
Laenihi	4,055	2,883	17,110
Poou ²	---	---	---
<i>Miscellaneous Inshore Fishes</i>			
Ahaaha	316	306	382
Aholehole	2,219	1,968	7,260
Amaama	4,486	4,092	13,277
Awa	645	645	736
Awaawa	93	89	105
Aweoweo	3,416	3,238	9,360
Hihimanu ²	---	---	---
Humuhumu	98	82	122
Kawealea	2,293	2,098	2,738
Makiawa ²	---	---	---
Moi	260	179	774
Mu	2,020	1,960	5,400
Nenue	11,750	11,438	18,933
Nohu	365	320	864
Nunu	128	117	284
Oililepa	6,958	6,952	6,202
Oio	2,533	1,838	1,835
Oopuhue ²	---	---	---
Pakii ²	---	---	---
Poopaa	431	401	741
Puhi (white)	175	167	202
Puhi (misc.)	189	156	99
Roi	724	582	1,652
Tilapia ²	---	---	---
Toau	2,072	2,015	6,882
Uouoa	236	236	577
Wahanui	101	38	62
SUBTOTAL	257,251	245,028	518,861

SHARKS

Blue shark ²	---	---	---
Hammerhead ²	---	---	---
Mako	79,466	78,755	61,575
Oceanic whitetip	576	46	28
Thresher	61,218	58,211	28,229
Tiger ⁴	---	---	---
Unclass/misc ⁴	4,505	1,785	1,712
Thresher (fins) ⁴	---	---	---
SUBTOTAL	145,765	138,797	91,543

LOBSTERS

Ula (slipper)	67	32	238
Ula (spiny)	7,813	7,145	85,933
SUBTOTAL	7,880	7,177	86,171

SPECIES	LBS. LANDED	LBS. SOLD	VALUE(\$)
CRABS			
Aama	288	288	1,289
Blue pincher ²	---	---	---
Kona	11,010	7,168	34,942
Kuahonu	4,663	4,630	15,102
Moala ²	---	---	---
Samoaan	190	177	548
SUBTOTAL	16,151	12,263	51,881
SHRIMP			
Ensifer ²	---	---	---
Laevigatus ²	9,225	9,210	75,983
SUBTOTAL	9,225	9,210	75,983
OTHER ANIMALS			
Hee (octopus)	25,503	20,039	57,077
Lole (sea cucumber) ²	---	---	---
Muhee (squid)	1,826	1,022	2,791
Opihi	12,518	12,098	63,142
Ina (sea urchin eggs) ²	---	---	---
Wana ²	---	---	---
SUBTOTAL	39,847	33,159	123,011
SEAWEEDS			
Limu kohu	2,331	2,247	19,291
Limu manaua ²	---	---	---
Limu ogo	5,596	4,504	14,345
Limu wawaeiole	7,850	7,850	6,989
Unclass./misc. ²	1,105	1,039	5,376
SUBTOTAL	16,882	15,640	46,001
CORALS			
Black ²	--	--	--
SUBTOTAL	not available ²		
UNCLASS./MISC.			
Unclass./misc. ²	22,744	6,991	64,064
TOTAL	20,596,066	19,738,439	40,438,425

Appendix B - Pond Harvest by species

Omitted due to confidentiality

Appendix C - Total Commercial Marine Landings

SPECIES	LBS. LANDED	LBS. SOLD	VALUE(\$)
GRAND TOTAL	20,596,066	19,738,439	40,438,425

Appendix D - Sea Landings by Fishing Method

FISHING METHOD	LBS. LANDED	LBS. SOLD	VALUE(\$)
Aku pole & line	990,621	979,419	1,365,415
Longline	12,570,081	12,544,011	26,933,189
Deepbottom handline	553,233	506,250	1,865,661
Inshore handline	392,821	358,864	776,388
Tuna handline	2,403,936	2,325,908	3,822,204
Other handline ³	---	---	---
Trolling	2,688,859	2,129,334	3,980,332
Diving	71,264	50,179	233,239
Net	831,404	754,941	1,173,291
Trap	61,663	59,618	171,525
Rod & reel (casting, dunking, etc.)	2,404	1,804	6,458
Handpick (limu & opihī)	29,400	27,738	109,143
Miscellaneous ³	380	373	1,581
TOTAL	20,596,066	19,738,439	40,438,425

Appendix E - Sea Landings by Island

ISLAND	LBS. LANDED	LBS. SOLD	VALUE(\$)
Oahu	16,319,893	15,976,158	33,077,462
Hawaii	3,155,174	2,889,749	4,909,575
Maui	490,914	363,147	1,102,535
Kauai & Niihau	587,308	475,790	1,224,375
Molokai	28,991	22,461	95,838
Lanai	13,786	11,134	28,640
STATE TOTAL	20,596,066	19,738,439	40,438,425

Appendix F - Sea Landings by Area Fished

AREA (area catch code)	LBS. LANDED	LBS. SOLD	VALUE(\$)
Main Hawaiian Islands (refer to Fisheries Chart No. 1)			
Kaula (508,528)	54,947	54,449	151,848
Kaulakahi Channel (521,525)	44,275	33,093	131,924
Niihau (505-506,526,527)	31,961	28,134	76,717
Makahuena Pt. - Kekaha (500,520)	505,995	437,272	749,219
Barking Sands - Na Pali Coast (501-502,522)	9,822	6,402	19,976
Hanalei - Moloa'a Bay (503,523)	125,688	90,246	205,016
Anahola - Nawiliwili (504,524)	154,761	116,405	247,110
Sand Is. - Ala Wai (400,420)	119,603	107,021	186,024
Pearl Harbor - Barbers Pt. (401,421)	221,424	195,458	343,211
Barbers Pt. - Kaena Pt. (402-403,422-423)	982,734	912,310	1,433,787
Kaena Pt. - Kahuku (404-405,424-425)	388,952	366,568	698,068
Laie Pt. - Kahana Bay (406-426)	73,172	61,509	124,523
Kaneohe Bay (407,427)	190,237	171,325	343,525
Kailua Bay - Makapuu Pt. (408,428)	64,606	57,515	115,531
Makapuu Pt. - Diamond Head (409)	15,417	14,343	25,615

Appendix F - Sea Landings by Area Fished (cont.)

AREA (area catch code)	LBS. LANDED	LBS. SOLD	VALUE(\$)
Kawai (Molokai) Channel (332,429)	82,974	76,257	162,407
Penguin Bank (331)	119,301	110,864	352,217
Kealaikahiki Channel (327)	63,221	46,933	165,663
Alenuihaha Channel (324-325)	9,908	7,718	24,297
Auau, Kalohi & Pailolo Channels (321)	35,965	19,265	136,710
Alalakeiki Channel (320)	63,103	41,453	117,026
Molokai (310-314,333)	37,521	30,874	105,676
Lanai (308-309,328)	70,353	45,746	117,626
Kahoolawe (306-307,326)	57,900	45,419	113,025
Makena - Hana (304-305)	23,379	21,029	92,821
Hana - Kahului (302-303,322-323)	155,827	127,831	345,330
Honolua - Lahaina (301)	8,438	6,138	19,785
Lahaina - Makena (300)	40,663	34,421	78,547
Miloli - South Pt. (100,108,120,128)	180,287	173,097	332,018
Punaluu - Kalapana (107,127)	133,787	131,941	258,830
Kona Coast (101,121)	1,130,687	941,349	1,514,103
Keahole - Kawaihae (102,122)	272,201	237,557	409,305
Kohala - Hamakua Coast (103-104,123-124)	134,111	129,600	245,441
Hilo (105,125)	263,380	253,172	430,691
Puna - Kalapana (106,126)	733,834	717,541	1,230,819
Other (all other area codes from Fisheries Chart No. 1 not listed above)	1,509,118	1,497,349	3,438,152
SUBTOTAL	8,109,552	7,347,604	14,542,586
Northwestern Hawaiian Islands offshore - 200 mile EEZ (refer to Fisheries Chart No. 2)			
Nihoa (16223C, 16123A, 16222I)	33,239	31,677	91,940
Twin Bank (16323C, 16223A) ³	---	---	---
Necker (16423D, 16423E, 16423F, 16423B, 16423C) ³	---	---	---
French Frigate (16623H, 16623I, 16623F) ³	---	---	---
Brooks Bank (16624A, 16623G)	47,172	41,739	129,201
St. Rogatien (16724F, 16724C)	25,326	22,886	73,202
Gardner Pinnacles (16825C, 16725A, 16824I, 16824F, 16724G, 16724D)	32,326	29,708	104,499
Maro Reef (17025D, 17025E, 17025A, 17025B)	25,322	23,994	77,968
Laysan (17125G, 17125H)	6,189	6,003	16,278
North Hampton (17225E, 17225F, 17225C) ³	---	---	---
Pioneer Bank (17326B, 17326C, 17325H, 17325I) ³	---	---	---
Lisianski (17426C, 17326A, 17425I, 17325G) ³	---	---	---
Other (all other areas codes from Fisheries Chart No. 2 not listed above) ³	940,265	915,007	2,186,077
SUBTOTAL	1,109,839	1,071,014	2,679,164
Other areas (not in Fisheries Charts 1 & 2) (other mid-ocean and missing area fished codes)	11,376,675	11,319,821	23,216,676
TOTAL	20,596,066	19,738,439	40,438,425

³Due to low level of fishermen reporting and to preserve confidentiality, data for these fishing methods and areas pooled under their respective group totals.

Appendix G - FAD Catches by Island and species

Hawaii FADs

SPECIES	A	B	C	D	E	F	G	HK	KH	OTEC	QQ	RN	SS	TT	UU	VV	XX	ZZ	TOTAL
Aku	--	1,692	631	9,804	1,066	399	4,833	6,268	**	**	2,266	**	--	**	122	564	140	--	27,785
Bigeye	--	--	**	**	**	--	**	**	--	--	**	--	--	**	**	--	--	--	**
Kawakawa	--	**	--	--	--	--	--	--	**	--	**	--	--	--	--	--	**	--	**
Tombo	--	914	8,363	2,800	7,537	--	14,575	7,303	**	--	**	**	--	--	--	**	--	--	41,492
Yellowfin	--	2,978	15,468	48,466	13,023	692	23,882	21,416	4,666	711	3,950	**	--	**	424	656	323	**	136,655
Tuna (misc.)	--	--	--	--	--	--	**	**	--	--	--	--	--	--	--	--	**	--	**
Black marlin	--	--	--	**	**	**	**	**	**	**	**	--	--	--	**	**	**	--	**
Blue marlin	--	2,223	11,786	**	**	870	4,135	**	--	**	**	--	--	**	1,619	8,808	1,301	--	30,742
Sailfish	--	**	--	--	--	--	--	--	--	--	--	--	--	--	--	--	--	--	**
Shortbill spearfish	--	**	383	--	--	**	--	--	--	**	--	--	--	**	**	780	--	--	1,163
Striped marlin	--	**	**	--	--	459	**	**	--	**	--	--	--	--	--	978	**	**	1,437
Swordfish	--	--	--	**	--	--	**	**	**	**	--	--	--	--	--	--	--	--	**
Kaku	--	**	--	--	--	--	--	--	**	--	--	--	--	--	--	--	--	**	**
Mahimahi	--	1,058	2,160	7,606	2,399	863	5,247	6,517	**	987	2,341	725	**	1,982	1,017	1,567	2,274	1,584	38,327
Ono	--	1,156	1,328	2,993	957	249	1,820	972	**	169	2,678	**	**	355	285	1,257	**	**	14,219
Kahala	--	**	--	--	--	--	--	--	--	--	--	--	--	--	--	--	--	--	**
Uku	--	**	--	--	**	--	--	--	--	--	--	--	--	--	--	--	--	--	**
Kamanu	--	**	**	**	--	**	--	--	--	--	**	--	--	--	--	--	--	--	**
Akule	--	--	--	--	--	--	**	--	--	--	--	--	--	--	--	--	--	--	**
Hahalalu	--	--	--	--	--	--	**	--	--	--	--	--	--	--	--	--	--	--	**
Ulua (misc.)	--	**	--	--	--	--	--	--	--	--	--	--	--	--	--	--	--	--	**
Shark (misc.)	--	--	--	--	--	--	--	--	--	--	--	--	--	--	--	--	**	--	**
Squid	--	--	--	--	--	--	--	--	--	--	--	--	--	--	--	--	**	--	**
Miscellaneous	--	--	--	--	--	--	--	--	--	--	--	--	--	--	--	**	--	--	**
TOTAL	0	10,021	40,119	71,669	24,982	3,532	54,492	42,476	4,666	1,867	11,235	725	**	2,337	3,467	14,610	4,038	1,584	291,820

Oahu FADs

SPECIES	J	P	R	S	T	U	V	X	BO	CO	HH	II	LL	MM	TOTAL
Aku	4,002	3,841	630	1,515	4,944	1,081	2,357	2,181	1,891	623	10,661	774	2,109	7,439	44,048
Bigeye	**	--	--	--	--	--	--	**	--	--	--	**	**	525	525
Kawakawa	--	--	**	**	**	--	**	--	--	--	--	--	--	--	**
Keokeo	--	--	**	--	--	--	**	--	--	--	--	--	--	--	**
Tombo	--	--	--	--	--	--	**	--	--	--	--	--	--	--	**
Yellowfin	12,059	595	2,524	2,770	263	1,661	1,501	9,827	1,085	987	4,584	2,849	17,233	26,155	84,093
Blue marlin	1,197	--	11,193	33,776	**	634	3,662	**	4,161	**	**	1,152	2,718	2,047	60,540
Sailfish	--	--	--	--	--	--	--	--	--	--	--	--	--	**	**
Shortbill spearfish	**	--	267	305	**	**	**	--	171	**	**	**	**	**	743
Striped marlin	**	--	3,678	6,819	**	**	462	**	1,055	708	371	223	**	**	13,316
Kaku	--	**	--	**	--	--	--	**	--	--	--	--	--	--	**
Mahimahi	8,420	1,335	1,698	3,042	2,307	4,497	1,826	11,206	9,691	992	5,793	3,037	6,486	17,292	77,622
Ono	1,409	**	640	954	705	1,073	1,096	1,193	870	**	397	369	1,382	2,124	12,212
Kahala	--	--	--	--	--	--	**	--	--	--	--	--	--	--	**
Opelu	--	--	**	**	--	--	**	--	--	--	--	--	--	--	**
Ulua (misc.)	--	--	--	--	--	--	--	--	--	--	--	--	**	--	**
Thresher shark	--	--	--	**	--	--	--	--	--	--	--	--	--	--	**
Tiger shark	--	--	--	**	--	--	--	--	--	--	--	--	--	--	**
Squid	--	--	--	--	--	--	--	--	--	--	--	--	**	--	**
TOTAL	27,087	5,771	20,630	49,181	8,219	8,946	10,904	24,407	18,924	3,310	21,806	8,404	29,928	55,582	293,099

**Due to low level of fishermen reporting and to preserve confidentiality, data for these FADs by species are not listed.

Maui, Kahoolawe, Lanai, and Molokai FADs

<i>SPECIES</i>	<i>I</i>	<i>K</i>	<i>M</i>	<i>N</i>	<i>O</i>	<i>Q</i>	<i>CC</i>	<i>DD</i>	<i>FF</i>	<i>HO</i>	<i>JJ</i>	<i>LA</i>	<i>MC</i>	<i>NL</i>	<i>T6</i>	<i>TOTAL</i>
Aku	**	227	**	**	**	671	**	307	3,330	1,105	6,371	**	**	**	--	12,011
Bigeye	--	**	--	--	--	--	**	--	**	**	**	--	**	--	--	**
Kawakawa	--	--	**	--	--	**	--	--	--	--	--	--	--	--	--	**
Yellowfin	**	514	--	**	--	1,034	471	**	14,530	1,704	33,706	--	**	956	--	52,915
Blue marlin	**	5,187	**	**	**	717	--	--	1,136	--	1,273	2,493	**	--	--	10,806
Sailfish	**	--	--	--	--	**	--	--	--	--	--	--	**	**	--	**
Shortbill spearfish	**	**	**	--	--	--	**	--	**	**	158	178	--	**	--	336
Striped marlin	**	1,228	--	**	--	**	**	--	**	**	317	476	**	**	**	2,021
Kaku	--	**	--	--	--	--	--	--	--	--	**	--	--	--	--	**
Mahimahi	1,625	3,749	1,467	723	**	9,995	1,448	5,679	3,488	8,376	2,979	2,391	333	**	--	42,253
Ono	1,172	**	211	**	**	1,976	**	757	1,509	2,096	1,446	550	**	**	--	9,717
Opelu	--	--	--	--	--	--	--	--	**	--	--	--	--	--	--	**
Kamanu	--	**	--	--	--	**	--	--	--	--	--	**	--	--	--	**
Omilu	--	--	--	--	--	--	--	--	--	--	--	**	--	--	--	**
Oceanic whitetip shark	--	**	--	**	--	--	--	--	--	--	--	--	--	--	--	**
Shark (misc.)	--	**	--	--	--	**	--	--	--	--	--	--	--	--	--	**
Unclassified	--	--	--	--	--	--	--	**	--	--	--	--	--	--	--	**
TOTAL	2,797	10,905	1,678	723	**	14,393	1,919	6,743	23,993	13,281	46,250	6,088	333	956	**	130,059

Kauai FADs

<i>SPECIES</i>	<i>Z</i>	<i>AA</i>	<i>BB</i>	<i>CK</i>	<i>DK</i>	<i>EK</i>	<i>KK</i>	<i>PP</i>	<i>WK</i>	<i>TOTAL</i>
Aku	612	**	--	2,248	--	**	726	559	742	4,887
Bigeye	--	--	--	--	--	--	--	**	--	**
Kawakawa	87	--	**	**	--	--	--	**	--	87
Yellowfin	13,636	4,464	**	6,415	**	**	5,196	6,438	2,440	38,589
Blue marlin	**	**	--	5,313	--	--	2,140	875	--	8,328
Sailfish	--	--	--	**	**	--	--	--	--	**
Shortbill spearfish	**	--	--	**	--	--	**	**	**	**
Striped marlin	**	**	--	**	--	**	**	298	**	298
Swordfish	**	--	--	**	--	--	**	--	**	**
Kaku	**	--	--	--	--	--	--	**	--	**
Mahimahi	1,844	440	**	3,224	**	**	3,016	1,170	**	9,694
Ono	1,314	**	**	1,463	244	**	496	785	**	4,302
Kahala	--	--	--	**	--	--	**	--	--	**
Uku	--	**	--	--	--	**	--	--	--	**
Akule	--	--	--	--	--	--	**	--	--	**
Hahalalu	--	--	--	--	--	--	**	--	--	**
Opelu	--	--	--	--	--	--	--	**	--	**
Kamanu	**	--	--	--	--	--	--	**	--	**
White papio	--	--	--	**	--	--	--	--	--	**
Ulua (misc.)	--	--	--	**	--	--	--	--	--	**
Shark (misc.)	**	--	--	--	--	--	--	--	--	**
Squid	--	--	--	--	--	--	--	**	--	**
Unclassified	--	--	--	--	**	--	--	--	--	**
TOTAL	17,493	4,904	**	18,663	244	**	11,574	10,125	3,182	66,185

Other FADs

<i>SPECIES</i>	<i>MO</i>	<i>W1</i>	<i>W2</i>	<i>W3</i>	<i>W4</i>	<i>TOTAL</i>
Aku	1,522	**	**	**	**	1,522
Bigeye	**	**	**	**	**	**
Tombo	--	--	--	**	--	**
Yellowfin	3,892	**	**	**	**	3,892
Blue marlin	--	**	**	**	--	**
Shortbill spearfish	**	**	**	**	**	**
Striped marlin	--	--	**	**	--	**
Mahimahi	1,287	**	**	10,076	**	11,363
Ono	344	**	**	**	--	344
Uku	--	**	--	--	--	**
Mako shark	--	--	**	--	--	**
TOTAL	7,045	**	**	10,076	**	17,121

Appendix H - FAD Catches by Island, FAD and Fishing Trip Count

Island	FAD	Location	# Mon. on Station	Fishing Method															
				Trolling			Tuna Handline			Aku boat			Other						
				Lbs.	# Trips	Lbs./ Trip	Lbs.	# Trips	Lbs./ Trip	Lbs.	# Trips	Lbs./ Trip	Lbs.	# Trips	Lbs./ Trip				
Hawaii	A	South Pt.	6.0																
	B	Miloli'i	12.0	6,772	129	52.5	3,478	47	74.0									***	
	C	Loa Pt.	10.5	18,427	197	93.5	22,179	112	198.0										***
	D	Kumukahi	12.0	24,958	126	198.1	85,375	88	970.2										
	E	Leleiwi	12.0	5,283	102	51.8	23,083	62	372.3										***
	F	Kailua-Kona	10.1	3,291	95	34.6				***									***
	G	Pepe'ekeo	12.0	17,616	145	121.5	38,111	88	433.1										***
	HK	Hakalau	12.0	13,576	102	133.1	30,034	62	484.4										***
	KH	Kahena	9.9	13,226	57	232.0				***									
	OT	Waikoloa Pt.	12.0	2,750	37	74.3													
	QQ	Makuu	12.0	10,975	117	93.8	1,652	14	118.0										***
	RN	Palima Pt.	12.0	1,950	14	139.3				***									
	SS	Apua Pt.	9.3			***													
	TT	Kanewa'a	12.0	2,811	64	43.9													
	UU	Auau	12.0	3,397	64	53.1	399	10	39.9										
	VV	Kahalu'u	12.0	14,164	325	43.6				***									***
	XX	Puako	6.3	4,288	67	64.0				***									***
ZZ	Waima Pt.	12.0	1,880	31	60.6														
Oahu	J	Waiale'e	12.0	23,003	206	111.7	1,822	24	75.9			***							
	P	Penguin Banks	9.9	2,895	35	82.7						***							
	R	Makaha	12.0	18,838	359	52.5	1,810	19	95.3									***	
	S	Pokai Bay	12.0	48,933	571	85.7	768	15	51.2			***						***	
	T	Makapu'u	11.1	3,868	70	55.3						***							
	U	Kane'ohe	11.0	8,840	117	75.6				***									
	V	Makua	12.0	11,116	265	41.9				***									***
	X	Kahuku	12.0	25,157	184	136.7	428	9	47.6			***							
	BO	Barbers Pt.	12.0	18,924	270	70.1				***		***							
	CO	Ka'ena Pt.	10.1	3,807	50	76.1				***									
	HH	Pearl Harbor	10.0	12,237	130	94.1				***	10,632	7	1,518.9						
	II	Hale'iwa	12.0	8,480	105	80.8	169	5	33.8										
	LL	Hau'ula	10.5	24,395	171	142.7	6,123	25	244.9			***							
	MM	Mokapu Pt.	12.0	39,219	300	130.7	10,501	48	218.8			***							***
T1	Waianae	12.0																	

***Due to low level of fishermen reporting and to preserve confidentiality, data for these FADs by fishing methods are not listed.

Island	FAD	Location	# Mon. on Station	Fishing Method												
				Trolling			Tuna Handline			Aku boat			Other			
				Lbs.	# Trips	Lbs./ Trip	Lbs.	# Trips	Lbs./ Trip	Lbs.	# Trips	Lbs./ Trip	Lbs.	# Trips	Lbs./ Trip	
Maui County	I	Halona Pt.	12.0	3,689	79	46.7										
	K	Palaoa	12.0	12,732	266	47.9										
	M	Hana Bay	12.0	1,944	37	52.5										
	N	Cape Halawa	12.0	1,942	17	114.2										
	O	Kalaupapa	5.2	2,177	14	155.5										
	Q	Pauwela Pt.	12.0	14,654	163	89.9	***						***			
	CC	Ka'ena Pt.	12.0	2,203	55	40.1										
	DD	Opana Pt.	11.6	6,834	189	36.2								***		
	FF	Pukaulua Pt.	8.9	24,010	97	247.5	***						***			
	HO	Ho'olawa Pt.	12.0	13,561	160	84.8	***						***			
	JJ	Kamohio	12.0	44,039	193	228.2	2,394	12	199.5							
	LA	Lahaina	12.0	6,149	219	28.1								***		
	MC	Palaoa	8.4	1,480	26	56.9										
	NL	Nu'u	10.5	1,446	13	111.2										
	T2	Kolo Harbor	12.0													
	T3	Pala'au	12.0													
T6	Palaoa	12.0		***												
Kauai	Z	Kipukai	12.0	6,708	160	41.9	11,859	32	370.6							
	AA	Port Allen	12.0	4,769	42	113.5	1,387	8	173.4				***			
	BB	Moloa'a	4.3	467	6	77.8	***									
	CK	Makahu'ena Pt.	10.7	16,790	183	91.7	2,775	11	252.3				***			
	DK	Anahola	10.8	1,523	21	72.5										
	EK	Hanalei	11.2	1,709	22	77.7										
	KK	Waimea	12.0	8,396	78	107.6	***						***			
	PP	Koloa	12.0	7,129	109	65.4	5,079	16	317.4				***			
	WK	Wailua	4.0	3,499	34	102.9	***						***			