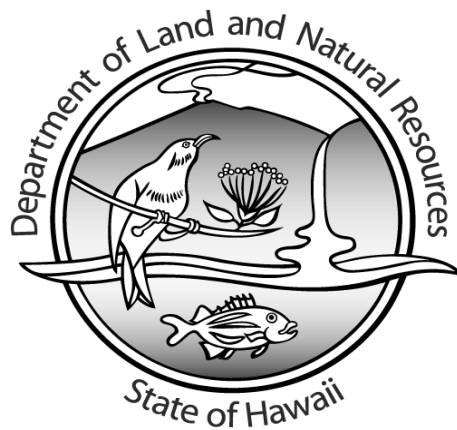


COMMERCIAL MARINE LANDINGS SUMMARY TREND REPORT
CALENDAR YEAR 2003



DIVISION OF AQUATIC RESOURCES
DEPARTMENT OF LAND AND NATURAL RESOURCES
STATE OF HAWAII

TABLE OF CONTENTS

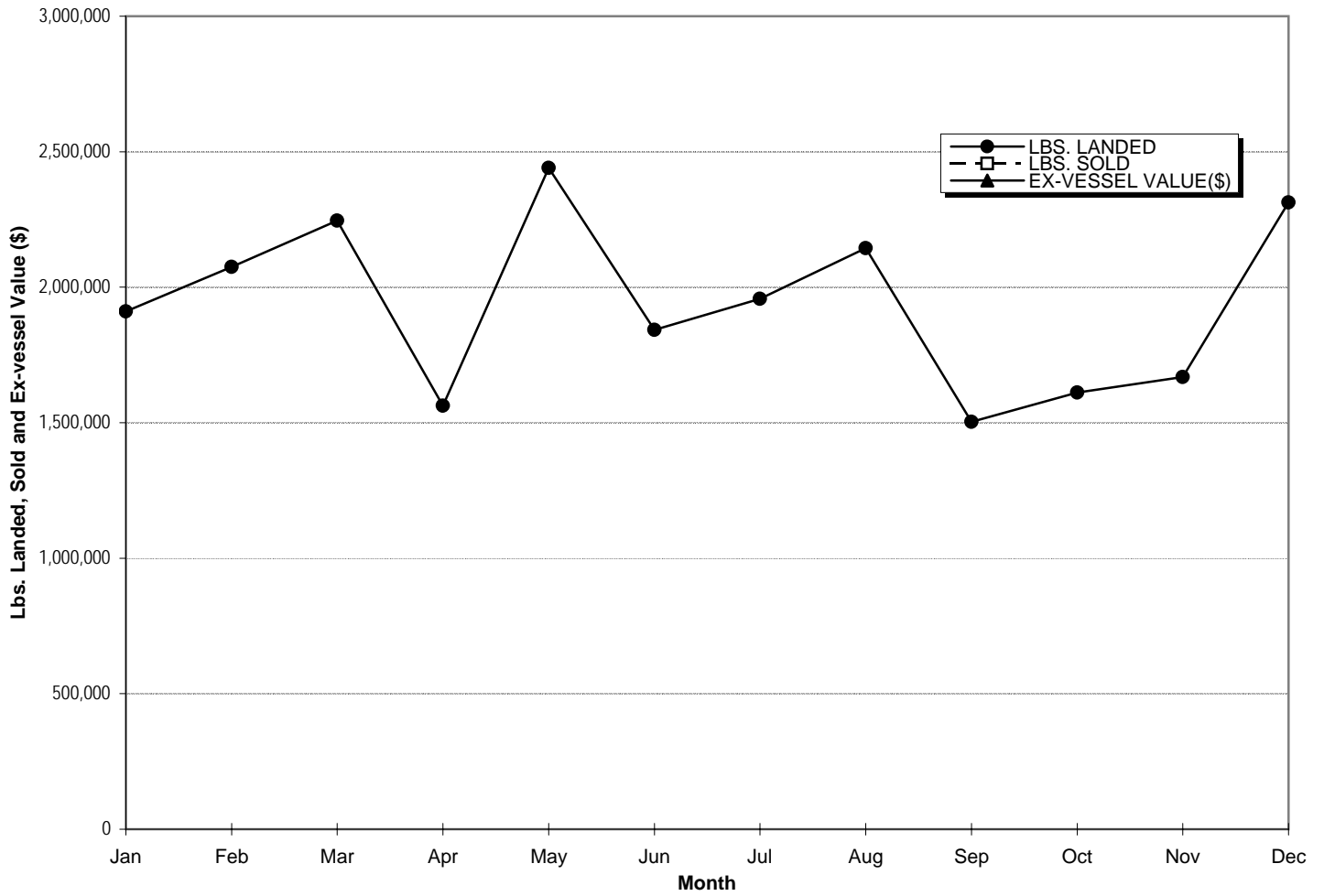
	Page No.
I. INTRODUCTION	1
II. CHARTS	
A. TOTAL SEA LANDINGS	
1. Annual Monthly Trends	2
2. Annual 5-year Trends	3
B. SEA LANDINGS BY SPECIES GROUPS	
1. Annual Monthly Trends	4
2. Annual 5-year Trends	5
C. SEA LANDINGS BY FISHING METHOD	
1. Annual Monthly Trends	6
2. Annual 5-year Trends	7
D. SEA LANDINGS BY PORT	
1. Annual Monthly Trends	8
2. Annual 5-year Trends	9
III. APPENDICES	
A. Sea Landings by Species	10
B. Sea Landings by Fishing Method	12
C. Sea Landings by Island	12
D. Sea Landings by Area Fished	12

Note: Data incomplete due to late submission and processing of fish catch records.

INTRODUCTION

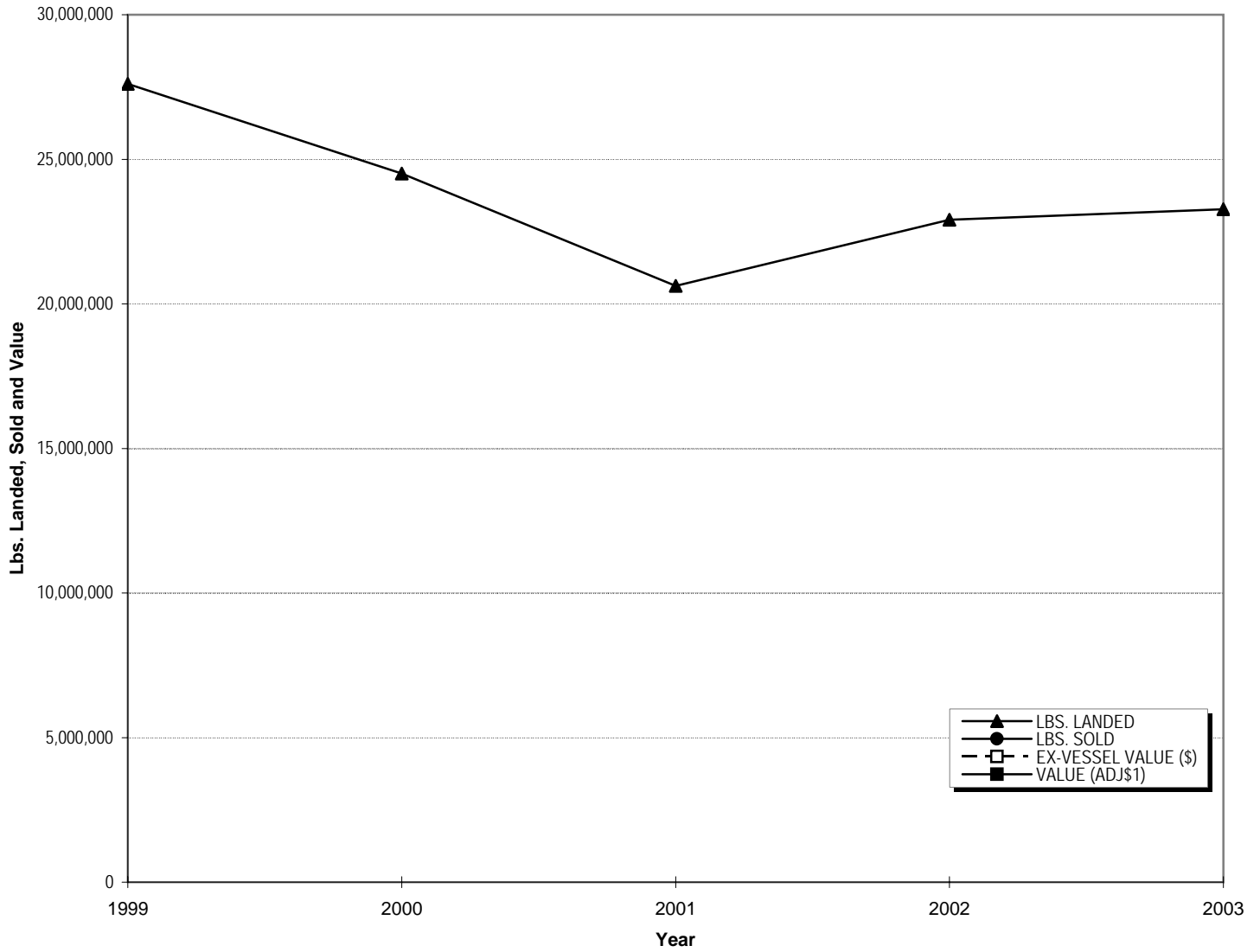
The information presented in this Commercial Marine Landing Summary Trend Report is compiled from fishing reports submitted by licensed fishermen. Commercial fishers are required to obtain commercial marine licenses and submit fishing reports to DLNR-DAR. In previous editions of these summary trend reports, including 1997 through 2001, only ex-vessel landing data (pounds sold and value of pounds sold) were reported. On October 2002, DLNR-DAR implemented new and revised commercial fishing report forms to improve the collection of fishing effort and total catch data. Since then commercial fishers no longer report ex-vessel landings on their fishing reports. The ex-vessel landing data are collected from commercial fish dealers. DLNR-DAR is in the process of integrating fishing effort and catch data from fishing report reports with ex-vessel landing data from commercial marine dealer reports. Until this process is completed, ex-vessel landing information by fisheries will not be available. Therefore, this commercial marine landings summary trend report only contains catch data or pounds landed. When the data integration process is completed, this summary trend report will be revised and the catch data will be replaced with ex-vessel value landing data.

**CHART A.1
TOTAL SEA LANDINGS ANNUAL MONTHLY TRENDS, 2003**



MONTH	LBS. LANDED	LBS. SOLD	EX-VESSEL VALUE(\$)
<i>Jan</i>	1,910,500		
<i>Feb</i>	2,075,168		
<i>Mar</i>	2,245,753		
<i>Apr</i>	1,562,751		
<i>May</i>	2,440,228		
<i>Jun</i>	1,842,907		
<i>Jul</i>	1,957,279		
<i>Aug</i>	2,143,823		
<i>Sep</i>	1,503,212		
<i>Oct</i>	1,611,779		
<i>Nov</i>	1,668,167		
<i>Dec</i>	2,312,537		
TOTAL	23,274,104		

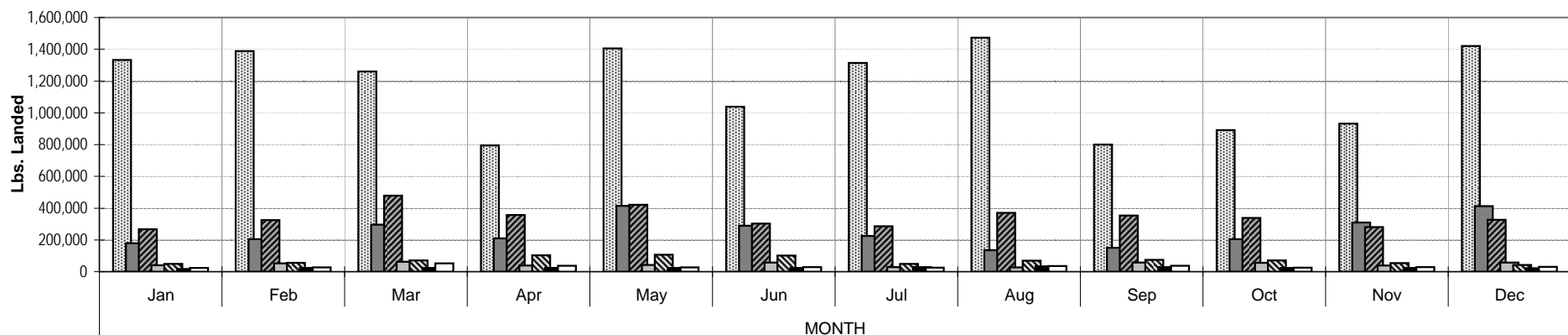
**CHART A.2
TOTAL SEA LANDINGS ANNUAL 5 - YEAR TRENDS, 1999 - 2003**



YEAR	LBS. LANDED	LBS. SOLD	EX-VESSEL VALUE (\$)	HCPI¹	VALUE (ADJ\$¹)
1999	27,607,809			173.4	
2000	24,503,119			176.5	
2001	20,617,941			179.1	
2002	22,906,685			180.6	
2003	23,274,104			184.3	

¹ Honolulu Consumer Price Index (all wage earners)

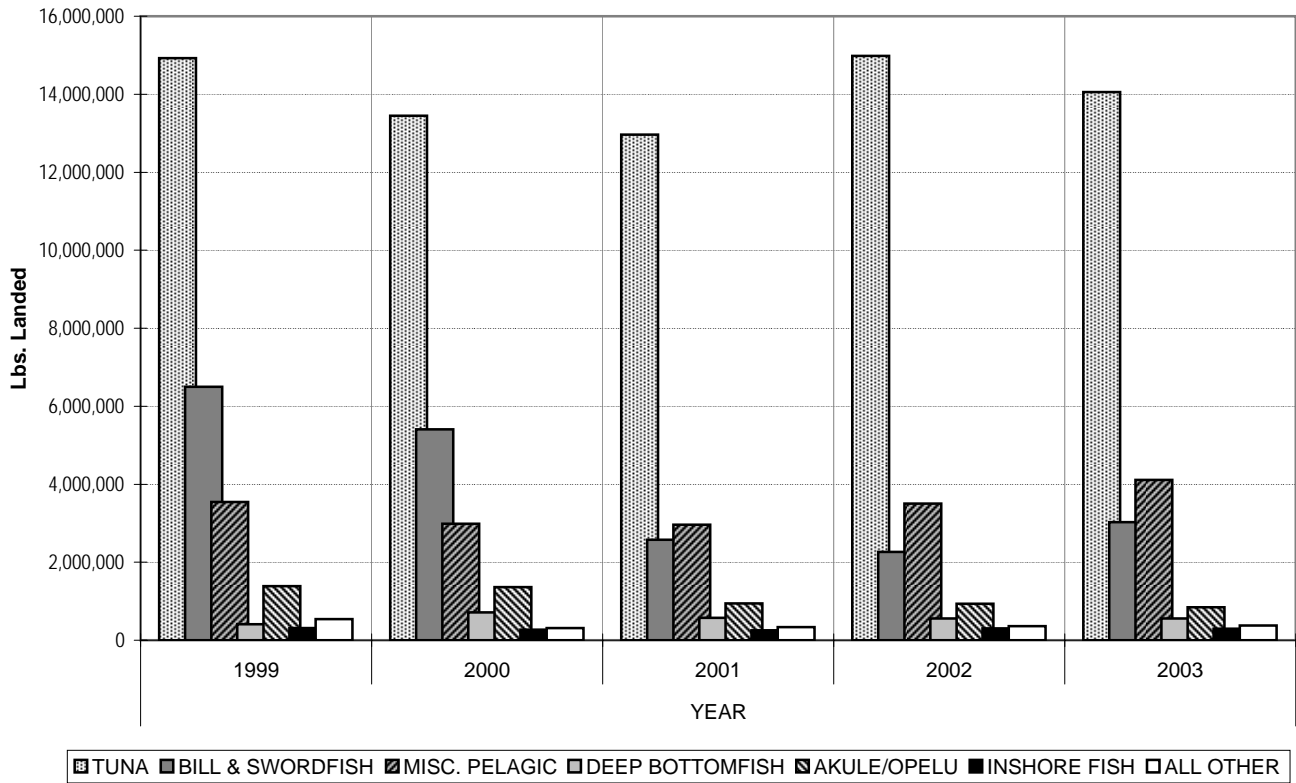
**CHART B.1
SEA LANDINGS BY SPECIES GROUP ANNUAL MONTHLY TRENDS, 2003**



<i>Calendar Year 2003</i>		<i>MONTH</i>												<i>YEAR TOTAL</i>
<i>SPECIES GROUP</i>		<i>Jan</i>	<i>Feb</i>	<i>Mar</i>	<i>Apr</i>	<i>May</i>	<i>Jun</i>	<i>Jul</i>	<i>Aug</i>	<i>Sep</i>	<i>Oct</i>	<i>Nov</i>	<i>Dec</i>	
TUNA	<i>Lbs. Landed</i>	1,332,876	1,388,314	1,260,044	795,291	1,406,145	1,038,801	1,314,676	1,473,806	799,476	891,836	932,578	1,421,215	14,055,058
	<i>Lbs. Sold</i>													
	<i>Ex-vessel Value (\$)</i>													
BILLFISH	<i>Lbs. Landed</i>	178,815	204,551	295,144	208,941	415,062	289,735	224,210	134,536	151,236	205,225	309,387	413,028	3,029,870
	<i>Lbs. Sold</i>													
	<i>Ex-vessel Value(\$)</i>													
MISC. PELAGIC	<i>Lbs. Landed</i>	267,464	325,142	478,959	356,149	420,534	302,637	286,446	371,060	353,605	338,740	280,923	325,733	4,107,392
	<i>Lbs. Sold</i>													
	<i>Ex-vessel Value(\$)</i>													
DEEP BOTTOMFISH	<i>Lbs. Landed</i>	40,120	51,981	63,138	38,528	42,009	57,767	28,358	26,566	58,012	56,017	38,550	58,065	559,111
	<i>Lbs. Sold</i>													
	<i>Ex-vessel Value (\$)</i>													
AKULE/OPELU	<i>Lbs. Landed</i>	49,420	55,006	71,616	102,993	106,600	101,715	48,453	69,130	74,525	70,949	54,004	43,054	847,465
	<i>Lbs. Sold</i>													
	<i>Ex-vessel Value (\$)</i>													
INSHORE FISH	<i>Lbs. Landed</i>	17,314	23,293	24,467	23,554	23,362	23,805	29,251	33,311	28,661	23,282	23,466	21,418	295,184
	<i>Lbs. Sold</i>													
	<i>Ex-vessel Value (\$)</i>													
ALL OTHER	<i>Lbs. Landed</i>	24,491	26,881	52,385	37,295	26,516	28,447	25,885	35,414	37,697	25,730	29,259	30,024	380,024
	<i>Lbs. Sold</i>													
	<i>Ex-vessel Value (\$)</i>													
TOTAL	<i>Lbs. Landed</i>	1,910,500	2,075,168	2,245,753	1,562,751	2,440,228	1,842,907	1,957,279	2,143,823	1,503,212	1,611,779	1,668,167	2,312,537	23,274,104
	<i>Lbs. Sold</i>													
	<i>Ex-vessel Value (\$)</i>													

CHART B.2

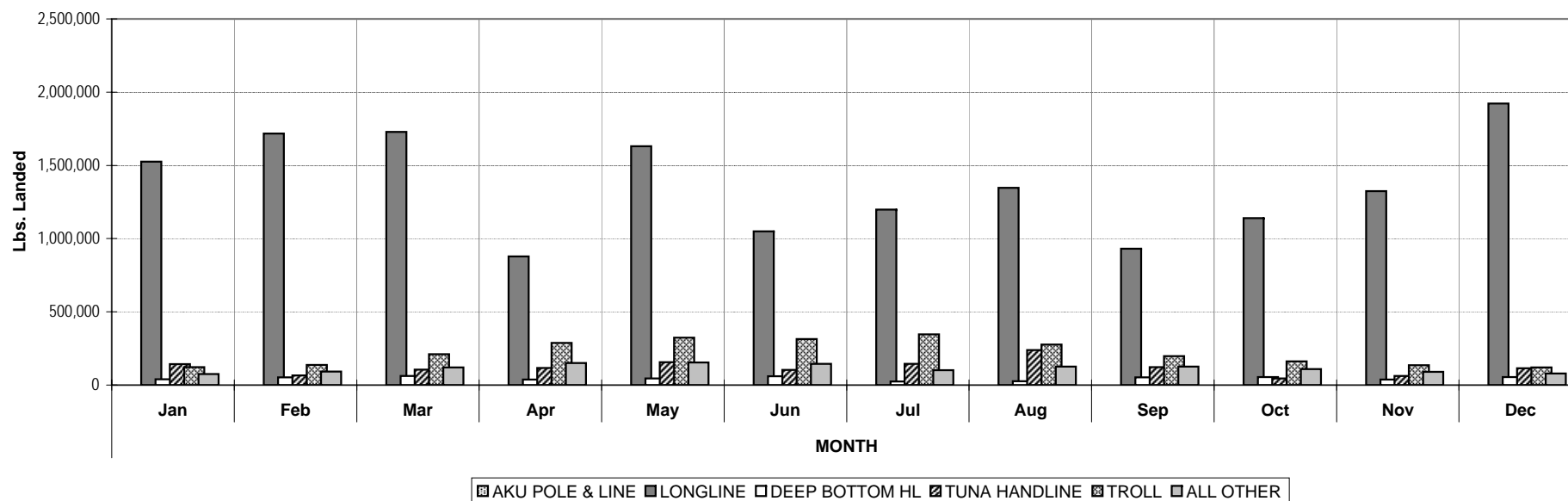
SEA LANDINGS BY SPECIES GROUPS ANNUAL 5 - YEAR TRENDS, 1999 - 2003



Calendar Year		YEAR				
SPECIES GROUP		1999	2000	2001	2002	2003
TUNA	Lbs. Landed	14,923,994	13,446,932	12,966,476	14,984,882	14,055,058
	Lbs. Sold					
	Value (Adj\$) ¹					
BILL & SWORDFISH	Lbs. Landed	6,497,600	5,405,400	2,577,817	2,263,181	3,029,870
	Lbs. Sold					
	Value (Adj\$) ¹					
MISC. PELAGIC	Lbs. Landed	3,546,680	2,989,745	2,964,877	3,501,554	4,107,392
	Lbs. Sold					
	Value (Adj\$) ¹					
DEEP BOTTOMFISH	Lbs. Landed	409,109	715,904	573,815	557,083	559,111
	Lbs. Sold					
	Value (Adj\$) ¹					
AKULE/OPELU	Lbs. Landed	1,382,628	1,361,786	944,260	939,149	847,465
	Lbs. Sold					
	Value (Adj\$) ¹					
INSHORE FISH	Lbs. Landed	308,883	269,298	258,277	301,162	295,184
	Lbs. Sold					
	Value (Adj\$) ¹					
ALL OTHER	Lbs. Landed	538,915	314,054	332,419	359,674	380,024
	Lbs. Sold					
	Value (Adj\$) ¹					
TOTAL	Lbs. Landed	27,607,809	24,503,119	20,617,941	22,906,685	23,274,104
	Lbs. Sold					
	Value (Adj\$)¹					

¹ Honolulu Consumer Price Index (all wage earners)

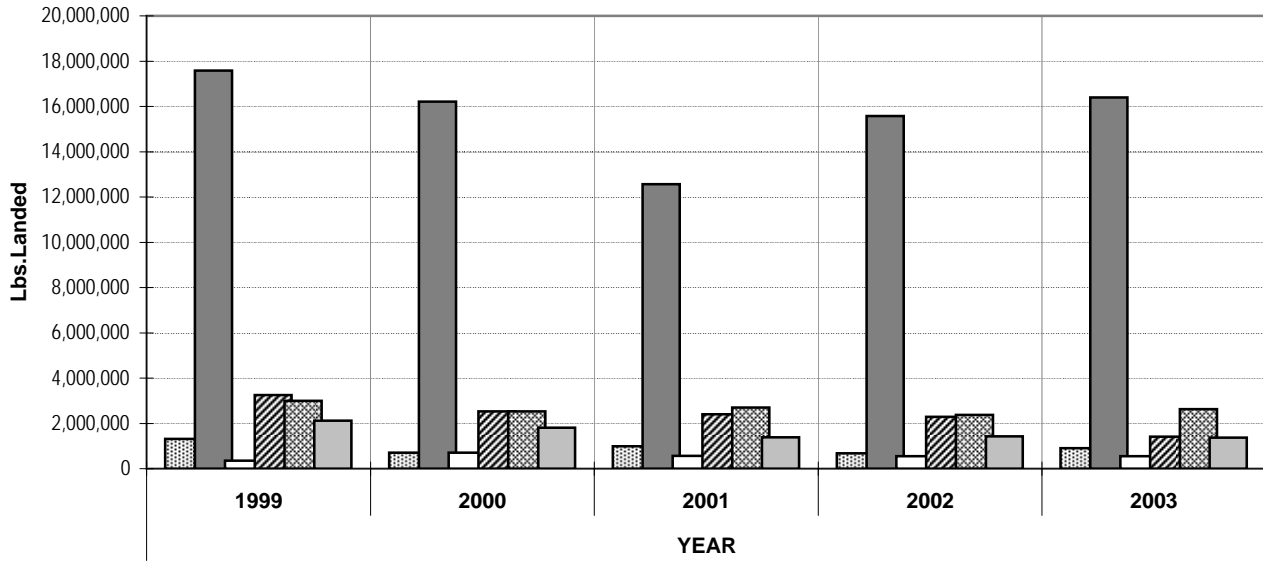
**CHART C.1
SEA LANDINGS BY FISHING METHOD ANNUAL MONTHLY TRENDS, 2003**



Calendar Year 2003		MONTH												YEAR TOTAL
METHOD		Jan	Feb	Mar	Apr	May	Jun	Jul	Aug	Sep	Oct	Nov	Dec	
AKU POLE & LINE	Lbs. Landed	*	*	*	*	*	*	*	*	*	*	*	*	905,939
	Lbs. Sold													
	Ex-vessel Value (\$)													
LONGLINE	Lbs. Landed	1,525,972	1,718,388	1,728,904	878,621	1,631,162	1,050,390	1,197,368	1,347,792	931,514	1,139,795	1,324,266	1,922,607	16,396,779
	Lbs. Sold													
	Ex-vessel Value (\$)													
DEEP BOTTOM HL	Lbs. Landed	39,542	53,078	61,567	38,111	44,687	59,601	25,310	27,014	52,665	53,640	37,948	53,816	546,979
	Lbs. Sold													
	Ex-vessel Value (\$)													
TUNA HANDLINE	Lbs. Landed	143,338	66,510	105,340	115,979	156,462	104,228	145,466	239,428	121,373	45,172	62,155	114,403	1,419,854
	Lbs. Sold													
	Ex-vessel Value (\$)													
TROLL	Lbs. Landed	121,571	136,764	211,388	287,722	323,817	314,952	345,355	276,830	197,599	161,824	135,231	119,778	2,632,831
	Lbs. Sold													
	Ex-vessel Value (\$)													
ALL OTHER	Lbs. Landed	75,748	91,466	120,747	150,686	154,482	144,292	101,908	126,242	126,621	110,030	90,667	78,833	1,371,722
	Lbs. Sold													
	Ex-vessel Value (\$)													
TOTAL	Lbs. Landed	1,906,171*	2,066,206*	2,227,946*	1,471,119*	2,310,610*	1,673,463*	1,815,407*	2,017,306*	1,429,772*	1,510,461*	1,650,267*	2,289,437*	23,274,104
	Lbs. Sold													
	Ex-vessel Value (\$)													

* 'Monthly' totals do not include landings for "Aku Pole & Line" due to confidentiality requirements.

**CHART C.2
SEA LANDINGS FISHING METHOD ANNUAL 5 - YEAR TRENDS, 1999 - 2003**

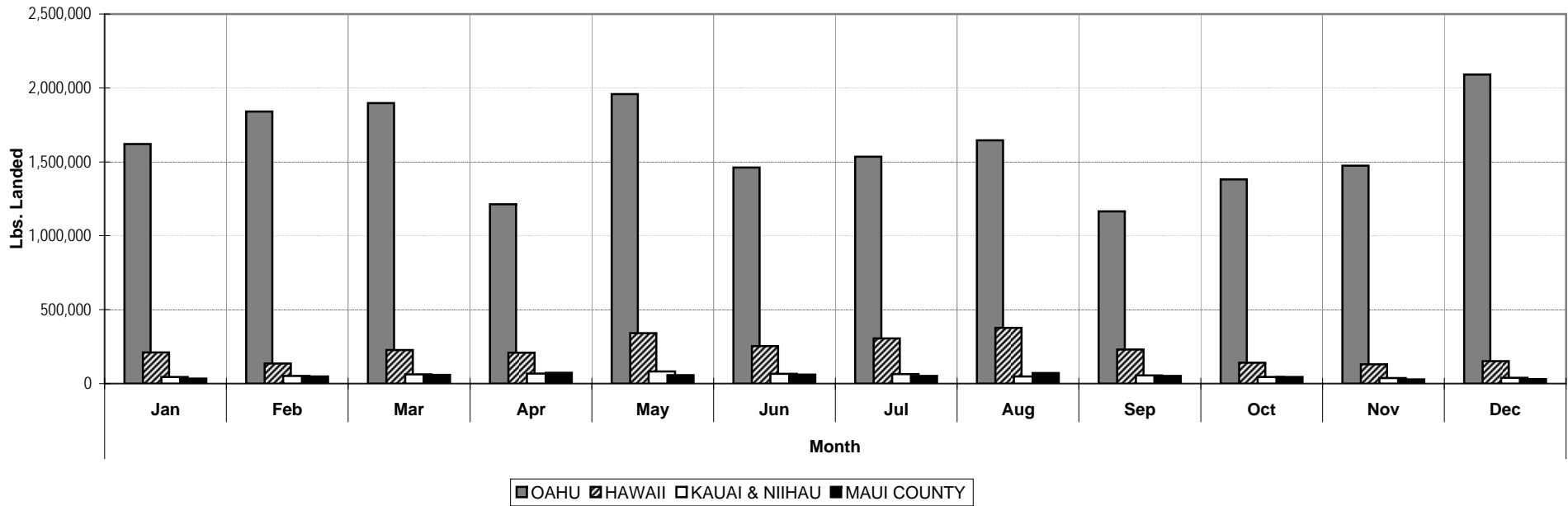


AKU POLE & LINE
 LONGLINE
 DEEP BOTTOM HL
 TUNA HANDLINE
 TROLLING
 ALL OTHER

<i>Calendar Year</i>		<i>YEAR</i>				
FISHING METHOD		1999	2000	2001	2002	2003
AKU POLE & LINE	<i>Lbs. Landed</i>	1,312,411	706,491	990,621	675,754	905,939
	<i>Lbs. Sold</i>					
	<i>Value (Adj\$)¹</i>					
LONGLINE	<i>Lbs. Landed</i>	17,584,737	16,212,093	12,570,081	15,580,447	16,396,779
	<i>Lbs. Sold</i>					
	<i>Value (Adj\$)¹</i>					
DEEP BOTTOM HL	<i>Lbs. Landed</i>	349,991	709,791	558,545	557,037	546,979
	<i>Lbs. Sold</i>					
	<i>Value (Adj\$)¹</i>					
TUNA HANDLINE	<i>Lbs. Landed</i>	3,247,417	2,532,530	2,407,141	2,292,894	1,419,854
	<i>Lbs. Sold</i>					
	<i>Value (Adj\$)¹</i>					
TROLLING	<i>Lbs. Landed</i>	2,996,098	2,531,000	2,700,032	2,376,941	2,632,831
	<i>Lbs. Sold</i>					
	<i>Value (Adj\$)¹</i>					
ALL OTHER	<i>Lbs. Landed</i>	2,117,155	1,811,214	1,391,521	1,423,612	1,371,722
	<i>Lbs. Sold</i>					
	<i>Value (Adj\$)¹</i>					
TOTAL	<i>Lbs. Landed</i>	27,607,809	24,503,119	20,617,941	22,906,685	23,274,104
	<i>Lbs. Sold</i>					
	<i>Value (Adj\$)¹</i>					

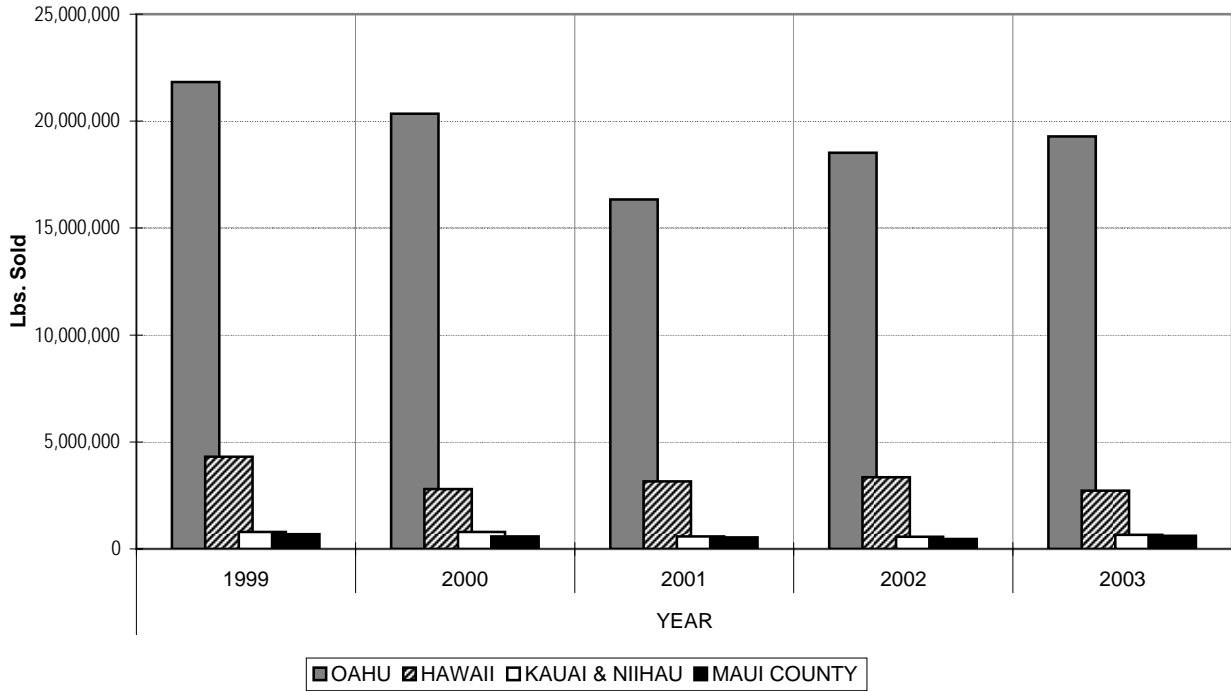
¹ Honolulu Consumer Price Index (all wage earners)

**CHART D.1
SEA LANDINGS BY PORT ANNUAL MONTHLY TRENDS, 2003**



Calendar Year 2003		Month												TOTAL
PORT		Jan	Feb	Mar	Apr	May	Jun	Jul	Aug	Sep	Oct	Nov	Dec	
OAHU	<i>Lbs. Landed</i>	1,620,448	1,841,002	1,897,397	1,212,874	1,958,757	1,461,930	1,534,392	1,645,935	1,165,561	1,380,639	1,473,654	2,091,451	19,284,040
	<i>Lbs. Sold</i>													
	<i>Ex-vessel Value (\$)</i>													
HAWAII	<i>Lbs. Landed</i>	211,695	135,523	227,647	209,321	341,776	254,058	305,413	377,827	231,021	141,427	129,773	151,094	2,716,575
	<i>Lbs. Sold</i>													
	<i>Ex-vessel Value (\$)</i>													
KAUAI & NIIHAU	<i>Lbs. Landed</i>	44,246	51,074	61,918	67,976	82,581	65,701	65,142	48,848	55,343	45,033	36,830	39,217	663,909
	<i>Lbs. Sold</i>													
	<i>Ex-vessel Value (\$)</i>													
MAUI COUNTY	<i>Lbs. Landed</i>	34,111	47,569	58,791	72,580	57,114	61,218	52,332	71,213	51,287	44,680	27,910	30,775	609,580
	<i>Lbs. Sold</i>													
	<i>Ex-vessel Value (\$)</i>													
TOTAL	<i>Lbs. Landed</i>	1,910,500	2,075,168	2,245,753	1,562,751	2,440,228	1,842,907	1,957,279	2,143,823	1,503,212	1,611,779	1,668,167	2,312,537	23,274,104
	<i>Lbs. Sold</i>													
	<i>Ex-vessel Value (\$)</i>													

**CHART D.2
SEA LANDINGS BY PORT ANNUAL 5-YEAR TRENDS, 1999 - 2003**



<i>Calendar Year</i>		<i>YEAR</i>				
PORT		1999	2000	2001	2002	2003
OAHU	<i>Lbs. Landed</i>	21,831,064	20,344,754	16,332,445	18,524,894	19,284,040
	<i>Lbs. Sold</i>					
	<i>Value (Adj\$)¹</i>					
HAWAII	<i>Lbs. Landed</i>	4,302,373	2,792,247	3,159,203	3,348,593	2,716,575
	<i>Lbs. Sold</i>					
	<i>Value (Adj\$)¹</i>					
KAUAI & NIIHAU	<i>Lbs. Landed</i>	789,021	785,651	588,460	569,250	663,909
	<i>Lbs. Sold</i>					
	<i>Value (Adj\$)¹</i>					
MAUI COUNTY	<i>Lbs. Landed</i>	685,351	580,467	537,833	463,948	609,580
	<i>Lbs. Sold</i>					
	<i>Value (Adj\$)¹</i>					
TOTAL	<i>Lbs. Landed</i>	27,607,809	24,503,119	20,617,941	22,906,685	23,274,104
	<i>Lbs. Sold</i>					
	<i>Value (Adj\$)¹</i>					

¹ Honolulu Consumer Price Index (all wage earners)

APPENDICES
Statistical Tables
Calendar 2003

Appendix A - Sea Landings by Species

SPECIES	LBS. LANDED	LBS. SOLD	VALUE(\$)	SPECIES	LBS. LANDED	LBS. SOLD	VALUE(\$)
TUNAS				AKULE/OPELU			
Aku	1,338,335			Akule	459,106		
Bigeye	8,117,742			Hahalalu	22,531		
Bluefin	688			Opelu	365,758		
Kawakawa	8,613			Opelu Mama	70		
Keokeo	92			SUBTOTAL	847,465		
Tombo	1,315,149			JACKS			
Yellowfin	3,230,812			Butaguchi	25,600		
Unclassified	43,627			Dobe	14,435		
SUBTOTAL	14,055,058			Gunkan	1,602		
BILLFISHES & SWORDFISH				Kamanu	5,844		
Black marlin	7,681			Kihikihi	289		
Blue marlin	932,894			Lae	690		
Sailfish	3,401			Menpachi (sasa)	338		
Shortbill spearfish	515,169			No-bite	51		
Striped marlin	1,354,288			Omaka	290		
Swordfish	208,556			Omilu	8,277		
Unclassified	7,881			Paopao	234		
SUBTOTAL	3,029,870			Papa	3,175		
MISC. PELAGIC FISHES				White	13,484		
Kaku	21,952			Unclass./misc.	2,044		
Mahimahi	1,266,183			SUBTOTAL	76,353		
Mola mola ²	---			INSHORE FISHES			
Monchong	437,059			<i>Parrotfishes</i>			
Ono	1,017,602			Panuhunuhu	1,175		
Opah	1,088,546			Panunu ²	---		
Walu	276,043			Uhu	34,331		
SUBTOTAL	4,107,385			<i>Goatfishes</i>			
DEEP BOTTOMFISHES				Kumu	2,612		
Alfonsin	71			Malu	115		
Ehu	26,566			Moano	3,260		
Golden kale	120			Moana kali	956		
Hapuupuu	47,719			Munu	132		
Hogo	2,431			Weke nono	5,511		
Kahala	5,951			Weke pueo	9		
Kalekale	12,472			Weke, red	39,400		
Lehi	8,644			Weke, white	5,493		
Opakapaka	139,759			Weke(unclass.)	4,713		
Randall snapper	15			<i>Surgeonfishes</i>			
Taape	42,240			Api	38		
Ukikiki (gindai)	4,948			Kala	21,255		
Uku	141,291			Kalalei	936		
Ulaula (onaga)	126,876			Kole	2,072		
Yellow-tail kale ²	---			Maiii ²	---		
SUBTOTAL	559,103			Maiko	6,666		
				Manini	20,026		
				Naenae	9,938		

²Due to low level of fishermen reporting and to preserve confidentiality, data for these species are pooled under their respective species group unclassified/miscellaneous or the Unclass./Misc. category.

SPECIES	LBS. LANDED	LBS. SOLD	VALUE(\$)	SPECIES	LBS. LANDED	LBS. SOLD	VALUE(\$)
INSHORE FISHES(cont.)				LOBSTERS			
<i>Surgeonfishes(cont.)</i>				Ula, Green spiny	5,908		
Opelu kala	1,267			Ula, Red spiny	1,469		
Pakuikui	594			Spiny (unclass./misc.) ²	---		
Palani	30,141			Haanii (slipper) ²	---		
Pualu	9,770			SUBTOTAL	7,377		
<i>Damselfishes</i>				CRABS			
Kupipi	98			Aama ²	---		
Maomao	810			Kona	12,279		
<i>Squirrelfishes</i>				Kuahonu	15,280		
Alaihi	652			Samoan ²	---		
Uu	33,840			Crab (unclass./misc.) ²	33		
Uukanipo	56			SUBTOTAL	27,592		
<i>Wrasses</i>				SHRIMP			
Aawa	2,004			Ensifer ²	---		
Ea	62			Laevigatus	5,169		
Hilu	29			SUBTOTAL	5,169		
Hinalea	116			OTHER ANIMALS			
Kupoupou	96			Hee (day tako)	16,729		
Laenihi	4,214			Hee (night tako) ²	---		
Poou	11			Hee (unclass./misc.) ²	6,232		
<i>Miscellaneous Inshore Fishes</i>				Lole (sea cucumber) ²	---		
Ahaaha	141			Muhee (squid)	2,903		
Aholehole	2,995			Opihi makaiauli	921		
Amaama	9,186			Opihi 'alina	9,426		
Awa	968			Opihi (unclass.)	1,383		
Awaawa	823			Urchin, Hawae ²	---		
Aweoweo	3,209			SUBTOTAL	37,594		
Humuhumu	62			SEaweEDS			
Iheihe ²	---			Limu kohu	2,562		
Kawelea	2,929			Limu manauea ²	---		
Lauwiliwili ²	---			Limu ogo	4,036		
Makiawa ²	---			Limu wawaeiole	5,997		
Moi	236			Unclass./misc. ²	709		
Mu	3,713			SUBTOTAL	13,304		
Nenu	19,503			CORALS			
Nohu	917			Black ²	---		
Nunu	26			SUBTOTAL	---		
Oililepa	906			UNCLASS./MISC.			
Oio	3,057			Unclass./misc. ²	10,058		
Oopuhue	1			TOTAL	23,274,104		
Pakii	14						
Poopaa	205						
Puhi (white)	59						
Puhi (misc.) ²	---						
Roi	1,333						
Tilapia ⁴	---						
Toau	1,681						
Uouoa	53						
Upapalu ²	---						
Wahanui	108						
SUBTOTAL	294,523						
SHARKS							
Mako	132,256						
Oceanic whitetip	245						
Thresher	66,224						
Tiger	1,500						
Unclass/misc	3,028						
SUBTOTAL	203,253						

Appendix B - Sea Landings by Fishing Method

FISHING METHOD	LBS. LANDED	LBS. SOLD	VALUE(\$)
Aku pole & line	905,939		
Longline	16,396,779		
Deepbottom handline	546,979		
Inshore handline	372,285		
Tuna handline	1,419,854		
Other handline ³	1,641		
Trolling	2,632,831		
Diving	83,969		
Net	747,059		
Trap	53,757		
Rod & reel (casting, dunking, etc.)	53,468		
Handpick (limu & opihi)	25,095		
Miscellaneous ³	34,448		
TOTAL	23,274,104		

Appendix C - Sea Landings by Island

ISLAND	LBS. LANDED	LBS. SOLD	VALUE(\$)
Oahu	19,284,040		
Hawaii	2,716,575		
Maui	569,496		
Kauai & Niihau	663,909		
Molokai	18,298		
Lanai	21,786		
STATE TOTAL	23,274,104		

Appendix F - Sea Landings by Area Fished

AREA (area catch code)	LBS. LANDED	LBS. SOLD	VALUE(\$)
Main Hawaiian Islands (refer to Fisheries Chart No. 1)			
Kaula (508,528)	55,113		
Kaulakahi Channel (521,525)	15,846		
Niihau (505-506,526,527)	160,858		
Makahuena Pt. - Kekaha (500,520)	271,448		
Barking Sands - Na Pali Coast (501-502,522)	35,671		
Hanalei - Moloa'a Bay (503,523)	78,769		
Anahola - Nawiliwili (504,524)	153,478		
Sand Is. - Ala Wai (400,420)	90,584		
Pearl Harbor - Barbers Pt. (401,421)	344,209		
Barbers Pt. - Kaena Pt. (402-403,422-423)	534,508		
Kaena Pt. - Kahuku (404-405,424-425)	448,265		
Laie Pt. - Kahana Bay (406-426)	138,115		
Kaneohe Bay (407,427)	497,400		
Kailua Bay - Makapuu Pt. (408,428)	99,573		
Makapuu Pt. - Diamond Head (409)	41,514		

Appendix F - Sea Landings by Area Fished (cont.)

AREA (area catch code)	LBS. LANDED	LBS. SOLD	VALUE(\$)
Kawai (Molokai) Channel (332,429)	49,156		
Penguin Bank (331)	99,162		
Kealaikahiki Channel (327)	38,319		
Alenuihaha Channel (324-325)	27,695		
Auau, Kalohi & Pailolo Channels (321)	24,333		
Alalakeiki Channel (320)	52,894		
Molokai (310-314,333)	41,291		
Lanai (308-309,328)	67,569		
Kahoolawe (306-307,326)	49,479		
Makena - Hana (304-305)	68,202		
Hana - Kahului (302-303,322-323)	161,821		
Honolua - Lahaina (301)	5,847		
Lahaina - Makena (300)	87,152		
Milolii - South Pt. (100,108,120,128)	173,706		
Punaluu - Kalapana (107,127)	128,038		
Kona Coast (101,121)	1,112,567		
Keahole - Kawaihae (102,122)	139,859		
Kohala - Hamakua Coast (103-104,123-124)	130,109		
Hilo (105,125)	251,500		
Puna - Kalapana (106,126)	292,356		
Other (all other area codes from Fisheries Chart No. 1 not listed above)	136,545		
SUBTOTAL	6,102,951		
Northwestern Hawaiian Islands offshore - 200 mile EEZ (refer to Fisheries Chart No. 2)			
Nihoa (16223C,16123A,16222I)	20,164		
Twin Bank (16323C,16223A) ³	---		
Necker (16423D,16423E,16423F,16423B,16423C) ³	---		
French Frigate (16623H,16623I,16623F) ³	11,291		
Brooks Bank (16624A,16623G)	26,982		
St. Rogatien (16724F,16724C)	19,166		
Gardner Pinnacles (16825C,16725A,16824I,16824F,16724G,16724D)	21,114		
Maro Reef (17025D,17025E,17025A,17025B)	20,850		
Laysan (17125G,17125H) ³	---		
North Hampton (17225E,17225F,17225C)	8,444		
Pioneer Bank (17326B,17326C,17325H,17325I) ³	---		
Lisianski (17426C,17326A,17425I,17325G)	14,932		
Other (all other areas codes from Fisheries Chart No. 2 not listed above) ²	153,850		
SUBTOTAL	296,793		
Other areas (not in Fisheries Charts 1 & 2) (other mid-ocean and missing area fished codes)	16,874,360		
TOTAL	23,274,104		

³Due to low level of fishermen reporting and to preserve confidentiality, data for these fishing methods and areas pooled under their respective group totals.