

COMMERCIAL MARINE LANDINGS SUMMARY TREND REPORT
CALENDAR YEAR 2008



DIVISION OF AQUATIC RESOURCES
DEPARTMENT OF LAND AND NATURAL RESOURCES
STATE OF HAWAII

TABLE OF CONTENTS

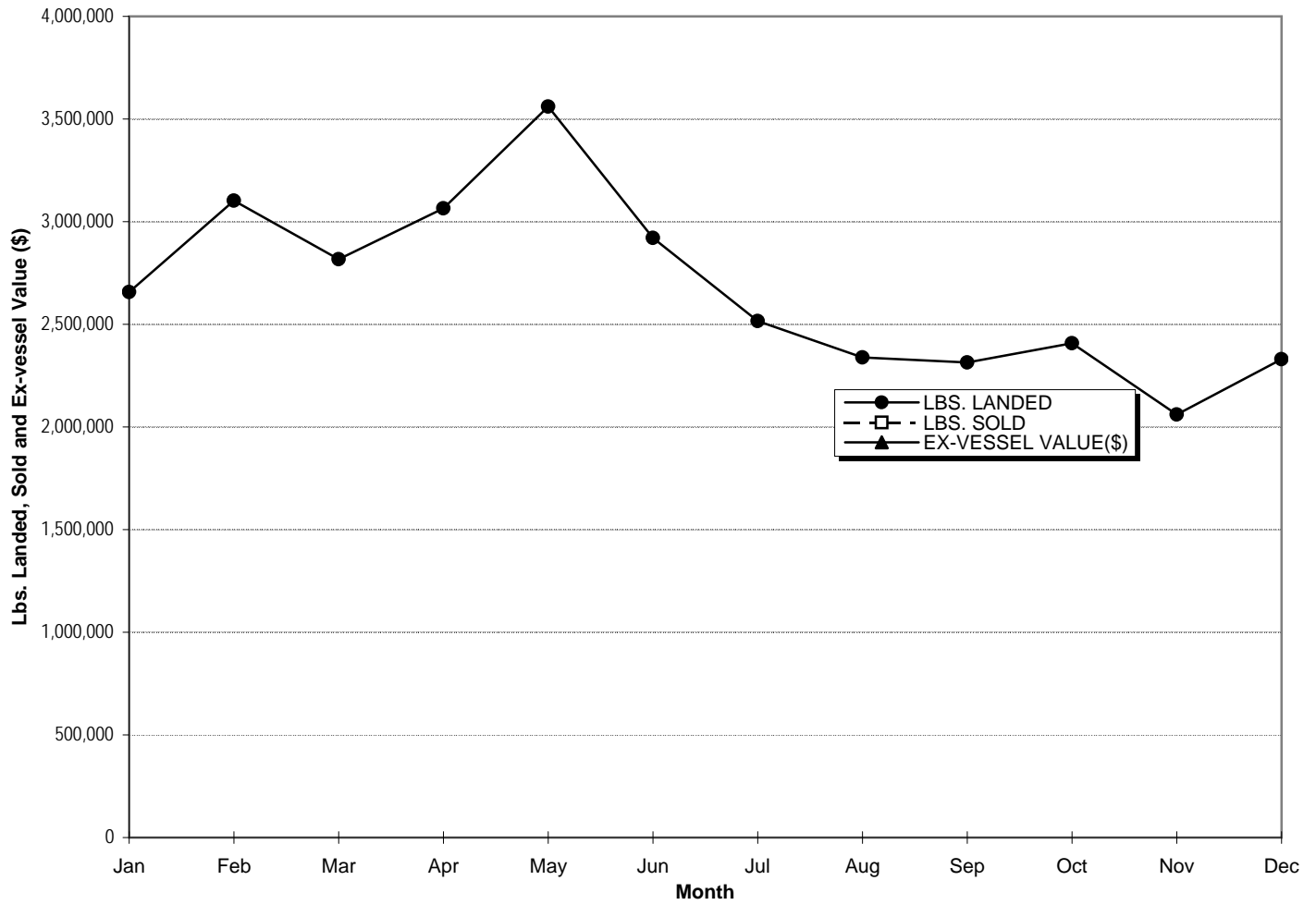
	Page No.
I. INTRODUCTION	1
 II. CHARTS	
<i>A. TOTAL SEA LANDINGS</i>	
1. Annual Monthly Trends	2
2. Annual 5-year Trends	3
 <i>B. SEA LANDINGS BY SPECIES GROUPS</i>	
1. Annual Monthly Trends	4
2. Annual 5-year Trends	5
 <i>C. SEA LANDINGS BY FISHING METHOD</i>	
1. Annual Monthly Trends	6
2. Annual 5-year Trends	7
 <i>D. SEA LANDINGS BY PORT</i>	
1. Annual Monthly Trends	8
2. Annual 5-year Trends	9
 II. APPENDICES	
A. Sea Landings by Species	10
B. Sea Landings by Fishing Method	12
C. Sea Landings by Island	12
D. Sea Landings by Area Fished	12
E. FAD Catches by Island and Species	13
F. FAD Catches by Island, FAD and Fishing Trip Count	15

Note: Data incomplete due to late submission and processing of fish catch records.

INTRODUCTION

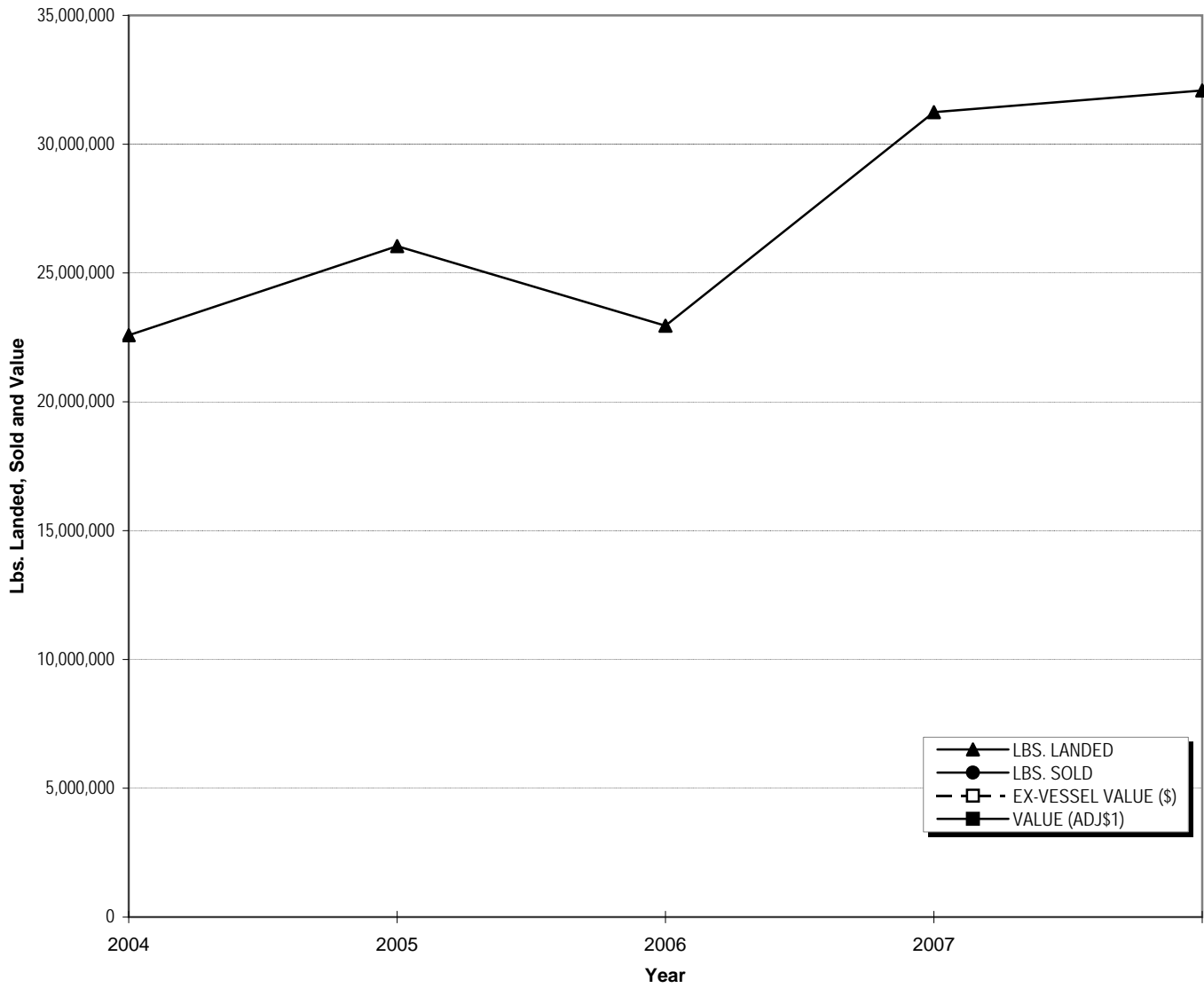
The information presented in this Commercial Marine Landing Summary Trend Report is compiled from fishing reports submitted by licensed fishermen. Commercial fishers are required to obtain commercial marine licenses and submit fishing reports to DLNR-DAR. In previous editions of these summary trend reports, including 1997 through 2001, only ex-vessel landing data (pounds sold and value of pounds sold) were reported. On October 2002, DLNR-DAR implemented new and revised commercial fishing report forms to improve the collection of fishing effort and total catch data. Since then commercial fishers no longer report ex-vessel landings on their fishing reports. The ex-vessel landing data are collected from commercial fish dealers. DLNR-DAR is in the process of integrating fishing effort and catch data from fishing report reports with ex-vessel landing data from commercial marine dealer reports. Until this process is completed, ex-vessel landing information by fisheries will not be available. Therefore, this commercial marine landings summary trend report only contains catch data or pounds landed. When the data integration process is completed, this summary trend report will be revised and the catch data will be replaced with ex-vessel value landing data.

**CHART A.1
TOTAL SEA LANDINGS ANNUAL MONTHLY TRENDS, 2008**



MONTH	LBS. LANDED	LBS. SOLD	EX-VESSEL VALUE(\$)
<i>Jan</i>	2,656,539		
<i>Feb</i>	3,101,819		
<i>Mar</i>	2,816,846		
<i>Apr</i>	3,064,837		
<i>May</i>	3,560,993		
<i>Jun</i>	2,920,219		
<i>Jul</i>	2,516,561		
<i>Aug</i>	2,338,205		
<i>Sep</i>	2,314,458		
<i>Oct</i>	2,407,240		
<i>Nov</i>	2,060,666		
<i>Dec</i>	2,329,268		
TOTAL	32,087,651		

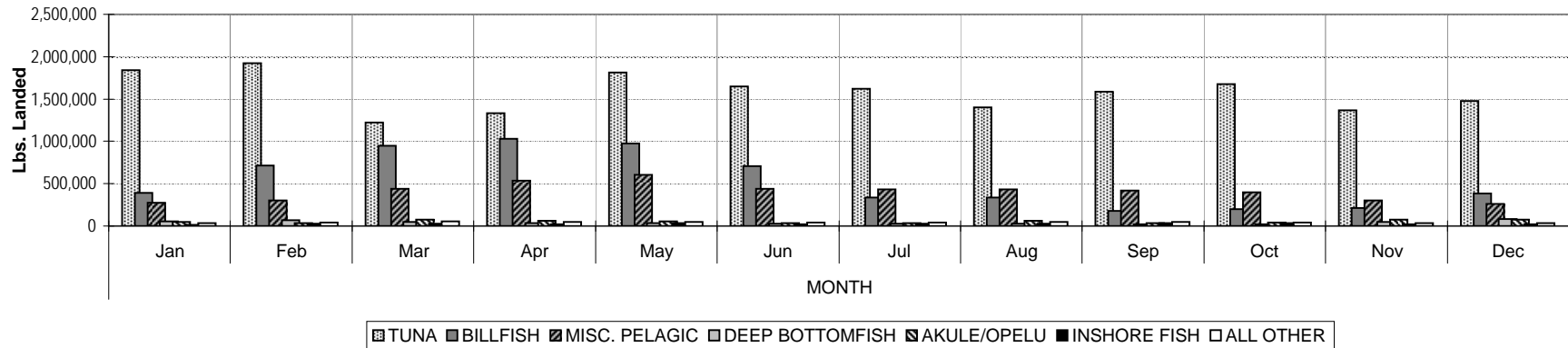
**CHART A.2
TOTAL SEA LANDINGS ANNUAL 5 - YEAR TRENDS, 2004 - 2008**



YEAR	LBS. LANDED	LBS. SOLD	EX-VESSEL VALUE (\$)	HCPI ¹	VALUE (ADJ\$ ¹)
2004	22,584,586				
2005	26,045,951				
2006	22,952,493				
2007	31,244,003				
2008	32,087,651				

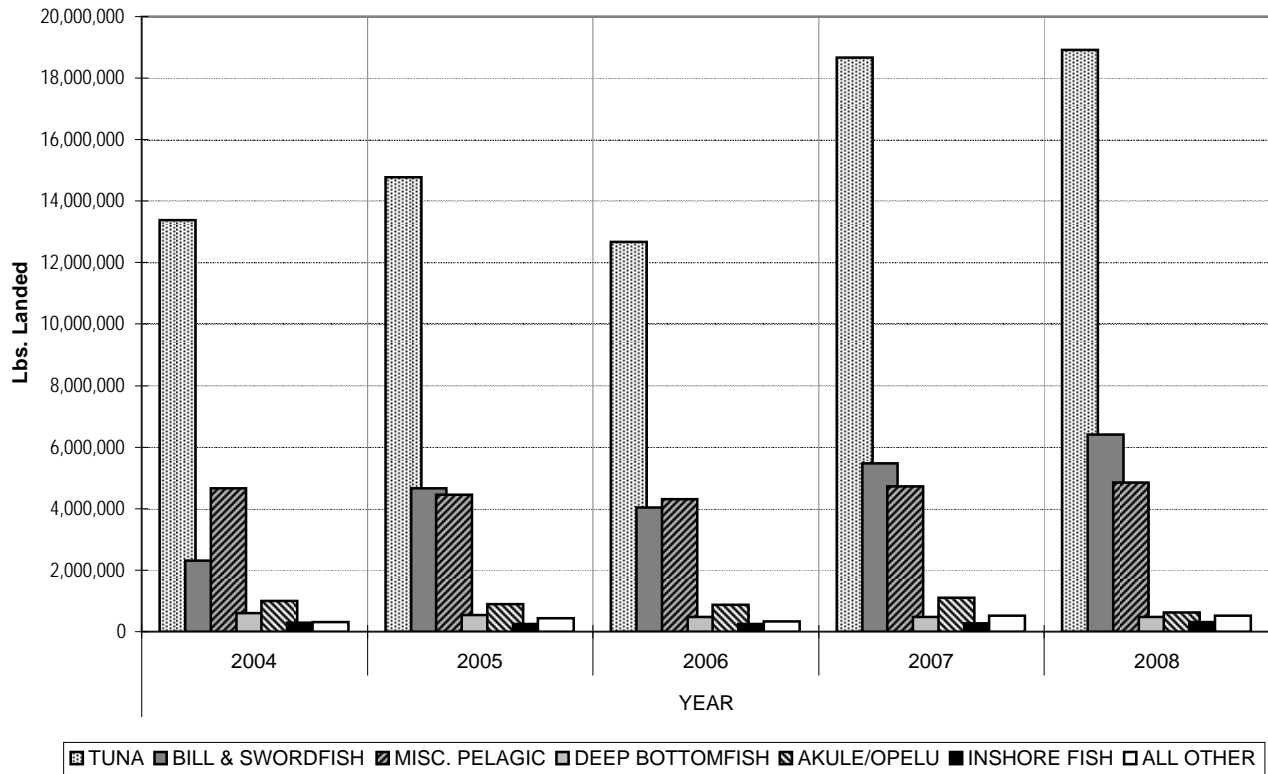
¹ Honolulu Consumer Price Index (all wage earners)

**CHART B.1
SEA LANDINGS BY SPECIES GROUP ANNUAL MONTHLY TRENDS, 2008**



<i>Calendar Year 2008</i>		<i>MONTH</i>												<i>YEAR</i>
SPECIES GROUP		Jan	Feb	Mar	Apr	May	Jun	Jul	Aug	Sep	Oct	Nov	Dec	TOTAL
TUNA	<i>Lbs. Landed</i>	1,843,647	1,925,055	1,221,249	1,332,690	1,814,069	1,650,391	1,623,655	1,399,292	1,583,795	1,672,591	1,366,501	1,475,353	18,908,288
	<i>Lbs. Sold</i>													
	<i>Ex-vessel Value (\$)</i>													
BILLFISH	<i>Lbs. Landed</i>	389,961	712,534	950,778	1,029,857	972,675	706,779	335,476	335,547	178,508	198,708	213,805	381,457	6,406,085
	<i>Lbs. Sold</i>													
	<i>Ex-vessel Value(\$)</i>													
MISC. PELAGIC	<i>Lbs. Landed</i>	272,512	299,821	439,426	538,083	602,472	441,927	433,011	435,882	420,224	398,751	304,124	261,832	4,848,065
	<i>Lbs. Sold</i>													
	<i>Ex-vessel Value(\$)</i>													
DEEP BOTTOMFISH	<i>Lbs. Landed</i>	53,154	66,361	45,116	32,040	35,667	27,501	26,978	28,369	19,974	22,653	45,585	79,466	482,864
	<i>Lbs. Sold</i>													
	<i>Ex-vessel Value (\$)</i>													
AKULE/OPELU	<i>Lbs. Landed</i>	44,672	35,213	74,421	63,355	52,287	33,685	31,288	62,171	31,311	42,766	75,102	74,508	620,779
	<i>Lbs. Sold</i>													
	<i>Ex-vessel Value (\$)</i>													
INSHORE FISH	<i>Lbs. Landed</i>	15,630	24,157	28,885	23,237	35,233	19,013	27,773	27,661	35,837	33,437	19,456	19,626	309,945
	<i>Lbs. Sold</i>													
	<i>Ex-vessel Value (\$)</i>													
ALL OTHER	<i>Lbs. Landed</i>	36,963	38,678	56,971	45,575	48,590	40,923	38,380	49,283	44,809	38,334	36,093	37,026	511,625
	<i>Lbs. Sold</i>													
	<i>Ex-vessel Value (\$)</i>													
TOTAL	<i>Lbs. Landed</i>	2,656,539	3,101,819	2,816,846	3,064,837	3,560,993	2,920,219	2,516,561	2,338,205	2,314,458	2,407,240	2,060,666	2,329,268	32,087,651
	<i>Lbs. Sold</i>													
	<i>Ex-vessel Value (\$)</i>													

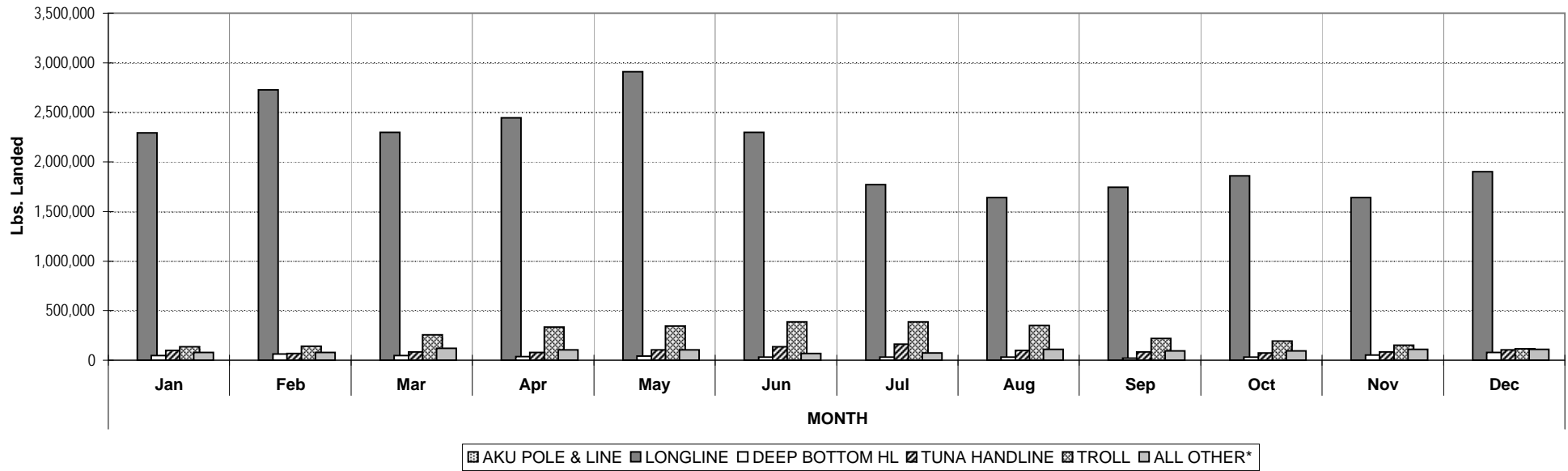
**CHART B.2
SEA LANDINGS BY SPECIES GROUPS ANNUAL 5 - YEAR TRENDS, 2004 - 2008**



<i>Calendar Year</i>		YEAR				
SPECIES GROUP		2004	2005	2006	2007	2008
TUNA	<i>Lbs. Landed</i>	13,380,327	14,777,368	12,669,355	18,676,534	18,908,288
	<i>Lbs. Sold</i>					
	<i>Value (Adj\$)¹</i>					
BILL & SWORDFISH	<i>Lbs. Landed</i>	2,303,064	4,672,031	4,038,778	5,472,436	6,406,085
	<i>Lbs. Sold</i>					
	<i>Value (Adj\$)¹</i>					
MISC. PELAGIC	<i>Lbs. Landed</i>	4,667,857	4,463,478	4,307,040	4,724,529	4,848,065
	<i>Lbs. Sold</i>					
	<i>Value (Adj\$)¹</i>					
DEEP BOTTOMFISH	<i>Lbs. Landed</i>	612,947	540,974	478,308	483,475	482,864
	<i>Lbs. Sold</i>					
	<i>Value (Adj\$)¹</i>					
AKULE/OPELU	<i>Lbs. Landed</i>	1,003,582	887,481	875,396	1,095,831	620,779
	<i>Lbs. Sold</i>					
	<i>Value (Adj\$)¹</i>					
INSHORE FISH	<i>Lbs. Landed</i>	295,690	257,223	250,257	268,501	309,945
	<i>Lbs. Sold</i>					
	<i>Value (Adj\$)¹</i>					
ALL OTHER	<i>Lbs. Landed</i>	321,119	447,396	333,359	522,697	511,625
	<i>Lbs. Sold</i>					
	<i>Value (Adj\$)¹</i>					
TOTAL	<i>Lbs. Landed</i>	22,584,586	26,045,951	22,952,493	31,244,003	32,087,651
	<i>Lbs. Sold</i>					
	<i>Value (Adj\$)¹</i>					

¹ Honolulu Consumer Price Index (all wage earners)

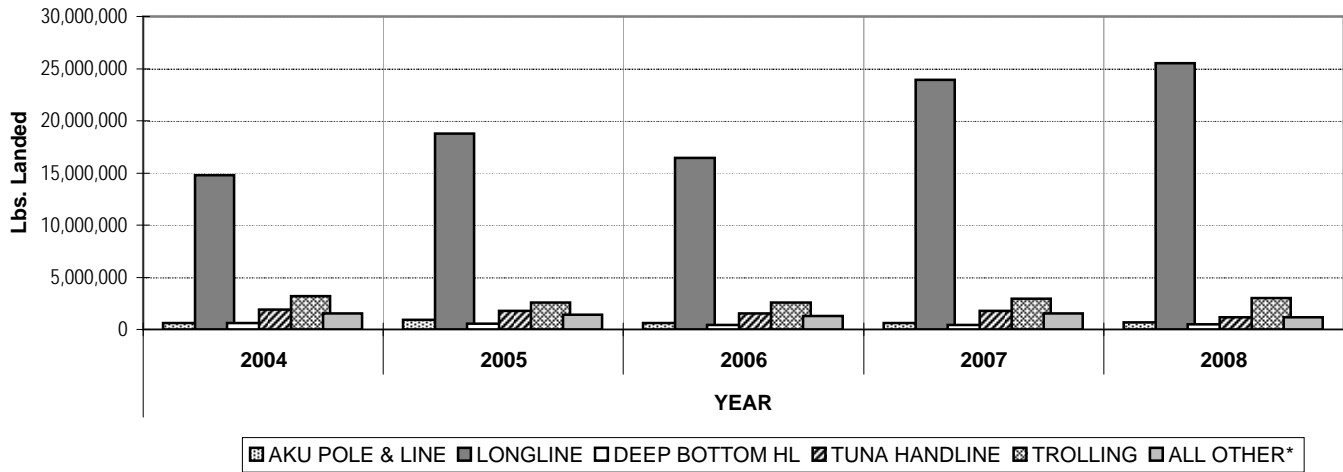
**CHART C.1
SEA LANDINGS BY FISHING METHOD ANNUAL MONTHLY TRENDS, 2008**



Calendar Year 2008		MONTH												YEAR TOTAL
METHOD		Jan	Feb	Mar	Apr	May	Jun	Jul	Aug	Sep	Oct	Nov	Dec	
AKU POLE & LINE	<i>Lbs. Landed</i> <i>Lbs. Sold</i> <i>Ex-vessel Value (\$)</i>	-	*	*	*	*	*	*	*	*	*	*	*	702,193
LONGLINE	<i>Lbs. Landed</i> <i>Lbs. Sold</i> <i>Ex-vessel Value (\$)</i>	2,295,000	2,729,459	2,297,960	2,443,979	2,908,332	2,298,054	1,771,780	1,640,250	1,742,447	1,860,683	1,639,180	1,898,975	25,526,099
DEEP BOTTOM HL	<i>Lbs. Landed</i> <i>Lbs. Sold</i> <i>Ex-vessel Value (\$)</i>	46,250	64,655	45,891	38,910	41,244	28,914	30,530	29,792	19,866	29,559	50,463	77,740	503,814
TUNA HANDLINE	<i>Lbs. Landed</i> <i>Lbs. Sold</i> <i>Ex-vessel Value (\$)</i>	100,836	69,792	82,591	79,819	105,077	133,893	163,301	100,601	86,143	73,060	82,647	103,188	1,180,948
TROLL	<i>Lbs. Landed</i> <i>Lbs. Sold</i> <i>Ex-vessel Value (\$)</i>	137,401	140,909	257,370	335,485	346,387	387,170	387,143	350,625	221,759	192,915	150,061	113,062	3,020,287
ALL OTHER*	<i>Lbs. Landed</i> <i>Lbs. Sold</i> <i>Ex-vessel Value (\$)</i>	77,052	80,635	122,752	105,114	105,973	67,398	75,554	108,316	96,218	93,432	110,630	111,236	1,154,310
TOTAL	<i>Lbs. Landed</i> <i>Lbs. Sold</i> <i>Ex-vessel Value (\$)</i>	2,656,539	3,085,450	2,806,564	3,003,307	3,507,013	2,915,429	2,428,308	2,229,584	2,166,433	2,249,649	2,032,981	2,304,201	32,087,651

*Due to low level of fishermen reporting and to preserve confidentiality, data for these methods are pooled under "ALL OTHER" group.

**CHART C.2
SEA LANDINGS FISHING METHOD ANNUAL 5 - YEAR TRENDS, 2004 - 2008**

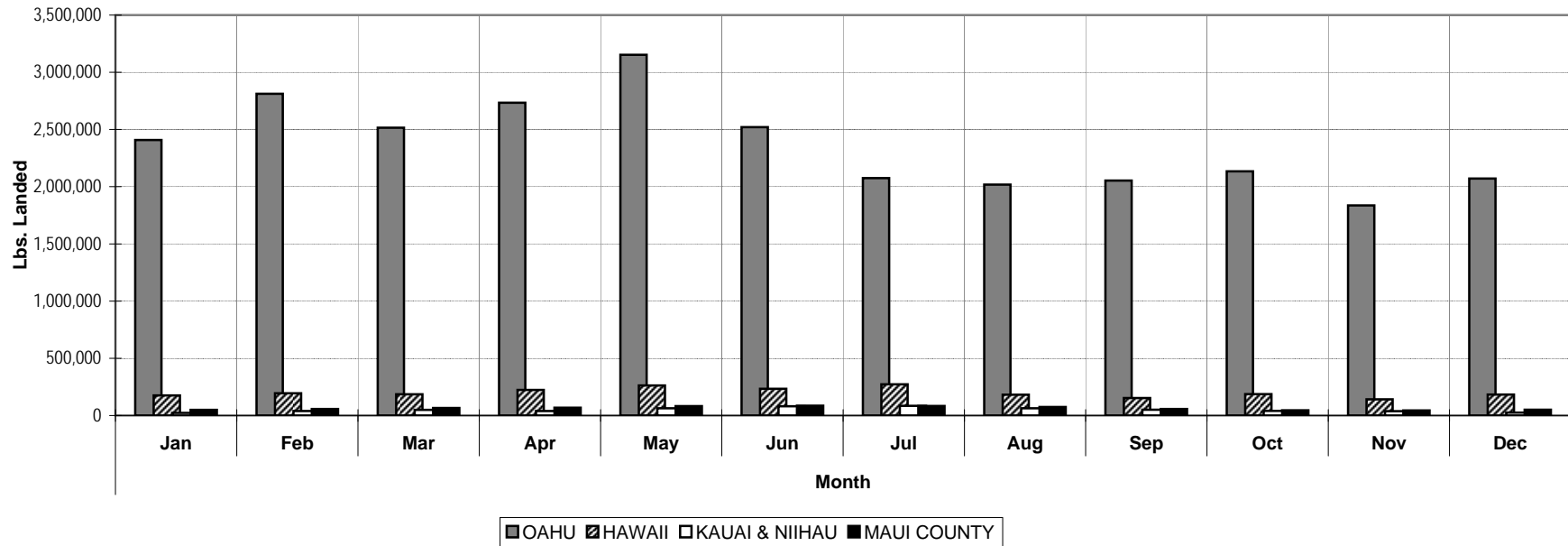


<i>Calendar Year</i>		<i>YEAR</i>				
FISHING METHOD		2004	2005	2006	2007	2008
AKU POLE & LINE	<i>Lbs. Landed</i>	636,928	904,729	630,590	643,029	702,193
	<i>Lbs. Sold</i>					
	<i>Value (Adj\$)¹</i>					
LONGLINE	<i>Lbs. Landed</i>	14,759,339	18,793,030	16,426,235	23,942,579	25,526,099
	<i>Lbs. Sold</i>					
	<i>Value (Adj\$)¹</i>					
DEEP BOTTOM HL	<i>Lbs. Landed</i>	586,741	541,128	452,878	440,082	503,814
	<i>Lbs. Sold</i>					
	<i>Value (Adj\$)¹</i>					
TUNA HANDLINE	<i>Lbs. Landed</i>	1,914,693	1,772,020	1,528,415	1,772,597	1,180,948
	<i>Lbs. Sold</i>					
	<i>Value (Adj\$)¹</i>					
TROLLING	<i>Lbs. Landed</i>	3,166,234	2,597,330	2,598,773	2,915,199	3,020,287
	<i>Lbs. Sold</i>					
	<i>Value (Adj\$)¹</i>					
ALL OTHER*	<i>Lbs. Landed</i>	1,520,651	1,437,714	1,315,602	1,530,517	1,154,310
	<i>Lbs. Sold</i>					
	<i>Value (Adj\$)¹</i>					
TOTAL	<i>Lbs. Landed</i>	22,584,586	26,045,951	22,952,493	31,244,003	32,087,651
	<i>Lbs. Sold</i>					
	<i>Value (Adj\$)¹</i>					

¹ Honolulu Consumer Price Index (all wage earners)

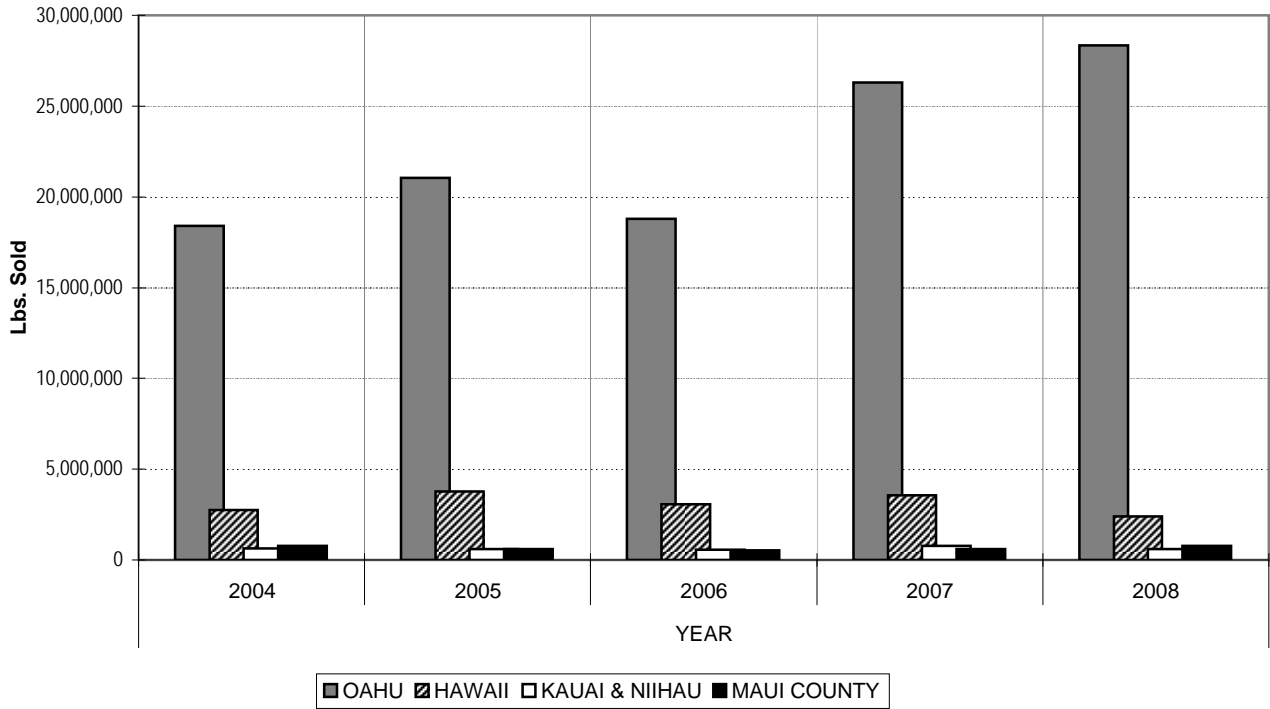
*Due to low level of fishermen reporting and to preserve confidentiality, data for these methods are pooled under "ALL OTHER" group.

**CHART D.1
SEA LANDINGS BY PORT ANNUAL MONTHLY TRENDS, 2008**



Calendar Year 2008		Month												TOTAL
PORT		Jan	Feb	Mar	Apr	May	Jun	Jul	Aug	Sep	Oct	Nov	Dec	
OAHU	Lbs. Landed	2,408,355	2,811,835	2,515,862	2,733,798	3,152,510	2,520,550	2,075,301	2,018,813	2,053,169	2,134,526	1,836,842	2,070,615	28,332,176
	Lbs. Sold													
	Ex-vessel Value (\$)													
HAWAII	Lbs. Landed	175,680	194,326	186,075	223,981	262,779	233,467	273,057	181,506	153,092	186,297	141,553	183,633	2,395,446
	Lbs. Sold													
	Ex-vessel Value (\$)													
KAUAI & NIIHAU	Lbs. Landed	23,012	38,505	48,697	38,782	63,372	80,186	84,692	63,103	51,019	40,973	37,896	24,702	594,939
	Lbs. Sold													
	Ex-vessel Value (\$)													
MAUI COUNTY	Lbs. Landed	49,492	57,153	66,212	68,276	82,332	86,016	83,511	74,783	57,178	45,444	44,375	50,318	765,090
	Lbs. Sold													
	Ex-vessel Value (\$)													
TOTAL	Lbs. Landed	2,656,539	3,101,819	2,816,846	3,064,837	3,560,993	2,920,219	2,516,561	2,338,205	2,314,458	2,407,240	2,060,666	2,329,268	32,087,651
	Lbs. Sold													
	Ex-vessel Value (\$)													

**CHART D.2
SEA LANDINGS BY PORT ANNUAL 5-YEAR TRENDS, 2004 - 2008**



Calendar Year		YEAR				
PORT		2004	2005	2006	2007	2008
OAHU	<i>Lbs. Landed</i>	18,409,745	21,039,294	18,800,760	26,288,314	28,332,176
	<i>Lbs. Sold</i>					
	<i>Value (Adj\$)¹</i>					
HAWAII	<i>Lbs. Landed</i>	2,765,485	3,783,142	3,083,093	3,554,375	2,395,446
	<i>Lbs. Sold</i>					
	<i>Value (Adj\$)¹</i>					
KAUAI & NIIH.	<i>Lbs. Landed</i>	617,711	608,922	552,154	791,514	594,939
	<i>Lbs. Sold</i>					
	<i>Value (Adj\$)¹</i>					
MAUI COUNT	<i>Lbs. Landed</i>	791,645	614,593	516,486	609,800	765,090
	<i>Lbs. Sold</i>					
	<i>Value (Adj\$)¹</i>					
TOTAL	<i>Lbs. Landed</i>	22,584,586	26,045,951	22,952,493	31,244,003	32,087,651
	<i>Lbs. Sold</i>					
	<i>Value (Adj\$)¹</i>					

¹ Honolulu Consumer Price Index (all wage earners)

APPENDICES
Statistical Tables
Calendar 2008

Appendix A - Sea Landings by Species

SPECIES	LBS. LANDED	LBS. SOLD	VALUE(\$)	SPECIES	LBS. LANDED	LBS. SOLD	VALUE(\$)
TUNAS				AKULE/OPELU			
Aku	1,104,670			Akule	303,336		
Bigeye	13,466,890			Hahalalu	55,279		
Bluefin	---			Opelu	262,155		
Kawakawa	8,401			Opelu Mama ²	---		
Keokeo	103			SUBTOTAL	620,770		
Tombo	796,040			JACKS			
Yellowfin	3,526,121			Barred-jack	---		
Unclassified	6,063			Butaguchi	8,446		
SUBTOTAL	18,908,288			Dobe	281		
BILLFISHES & SWORDFISH				Gunkan	1,095		
Black marlin	9,457			Kagami	327		
Blue marlin	998,765			Kamanu	4,604		
Sailfish	12,003			Lae	275		
Shortbill spearfish	520,351			Menpachi (sasa)	705		
Striped marlin	1,033,982			No-bite	85		
Swordfish	3,830,173			Omaka	154		
Unclassified	1,354			Omilu	7,715		
SUBTOTAL	6,406,085			Paopao	81		
MISC. PELAGIC FISHES				Papa	4,975		
Kaku	31,039			White	19,297		
Mahimahi	1,386,347			Unclass./misc.	365		
Malolo ²	---			SUBTOTAL	48,405		
Mola mola ²	---			INSHORE FISHES			
Monchong	671,823			<i>Parrotfishes</i>			
Ono	965,370			Panuhunuhu	261		
Opah	1,306,399			Panunu	44		
Walu	487,003			Uhu	44,501		
SUBTOTAL	4,847,981			<i>Goatfishes</i>			
DEEP BOTTOMFISHES				Kumu	2,354		
Alfonsin	70			Malu	54		
Armorhead ²	---			Moano	3,489		
Ehu	23,629			Moana kali	1,692		
Golden kale	135			Munu	594		
Hapuupuu	20,746			Weke nono	3,477		
Hauliuli	36			Weke, red	22,261		
Hogo	1,350			Weke, white	3,997		
Kahala	12,674			Weke (unclass.)	137		
Kalekale	7,856			<i>Surgeonfishes</i>			
Lehi	12,112			Api	51		
Opakapaka	119,573			Black kole	322		
Randall snapper	44			Kala	20,131		
Taape	40,057			Kalalei	1,401		
Ukikiki (gindai)	3,802			Kole	3,390		
Uku	152,967			Maiko	2,336		
Ulaula (onaga)	87,752						
Yellow-tail kale	21						
SUBTOTAL	482,824						

²Due to low level of fishermen reporting and to preserve confidentiality, data for these species are pooled under their respective species group unclassified/miscellaneous or the Unclass./Misc. category.

SPECIES	LBS. LANDED	LBS. SOLD	VALUE(\$)	SPECIES	LBS. LANDED	LBS. SOLD	VALUE(\$)
INSHORE FISHES(cont.)				SHARKS			
<i>Surgeonfishes(cont.)</i>				Hammerhead	11		
Manini	11,510			Mako	247,390		
Naenae	6,450			Oceanic whitetip	231		
Opelu kala	2,527			Thresher	88,042		
Pakuikui	370			Unclass/misc	1,369		
Pala ²	---			SUBTOTAL	337,043		
Palani	26,912			LOBSTERS			
Pualu	5,694			Ula, Green spiny	10,095		
<i>Damselfishes</i>				Ula, Red spiny	1,409		
Kupipi	41			Spiny (unclass./misc.)	345		
Maomao	1,826			Haanii (slipper)	---		
<i>Squirrelfishes</i>				Squammosus	10		
Alaihi	338			Slipper (unclass./misc.)	34		
Alaihi Mama	30			SUBTOTAL	11,893		
Pauu ²	---			CRABS			
Uu	58,803			Aama	---		
<i>Wrasses</i>				Kona	11,180		
Aawa	3,320			Kuahonu	31,611		
Hinalea	31			Samoaan	2,853		
Kupoupou	23			Crab (unclass./misc.)	20		
Laenihi	2,576			SUBTOTAL	45,664		
Poou	76			SHRIMP			
Unclass./misc. ²	---			Ensifer ²	---		
<i>Miscellaneous Inshore Fishes</i>				Laevigatus ²	---		
Ahaaha	662			SUBTOTAL	---		
Aholehole	4,182			OTHER ANIMALS			
Amaama	9,337			Hee (day tako)	29,950		
Awa	1,024			Hee (unclass./misc.) ²	---		
Awaawa	408			Lole (sea cucumber) ²	---		
Aweoweo	3,843			Muhee (squid)	1,355		
Humuhumu	812			Opihi makaiauli	1,179		
Iheihe ²	---			Opihi 'alina	9,338		
Kawelea	3,925			Opihi (unclass.) ²	---		
Loulu	454			SUBTOTAL	41,822		
Moi	544			SHELLS			
Mu	2,012			SUBTOTAL	n/a		
Nenu	21,597			SEAWEEDS			
Nohu	703			Limu kohu	3,394		
Nunu	49			Limu ogo	1,987		
Oio	11,308			Limu wawaeiole	4,519		
Pakii	21			Unclass./misc. ²	---		
Poopaa	499			SUBTOTAL	9,900		
Puhi (brown) ²	--			CORALS			
Puhi (white)	72			Black ²	---		
Puhi (misc.)	411			SUBTOTAL	---		
Roi	2,480			Unclass./misc. ²			
Tilapia	10,535				17,216		
Toau	3,309			TOTAL	32,087,651		
Uouoa	403						
Upapalu ²	---						
Wahanui	151						
SUBTOTAL	309,760						

Appendix B - Sea Landings by Fishing Method

FISHING METHOD	LBS. LANDED	LBS. SOLD	VALUE(\$)
Aku pole & line	702,193		
Longline	25,526,099		
Deepbottom handline	503,814		
Inshore handline	295,422		
Tuna handline	1,180,948		
Other handline	1,344		
Trolling	3,020,287		
Diving	129,533		
Net	579,095		
Trap	70,957		
Rod & reel (casting, dunking, etc.)	45,228		
Handpick (limu & opihi)	20,941		
Unclass./Misc.	11,790		
TOTAL	32,087,651		

Appendix C - Sea Landings by Island

ISLAND	LBS. LANDED	LBS. SOLD	VALUE(\$)
Oahu	28,332,176		
Hawaii	2,395,446		
Maui	765,090		
Kauai & Niihau	594,939		
Molokai			
Lanai			
STATE TOTAL	32,087,651		

Appendix D - Sea Landings by Area Fished

AREA (area catch code)	LBS. LANDED	LBS. SOLD	VALUE(\$)
Main Hawaiian Islands (refer to Fisheries Chart No. 1)			
Kaula (508,528)	43,120		
Kaulakahi Channel (521,525)	22,483		
Niihau (505-506,526,527)	41,788		
Makahuena Pt. - Kekaha (500,520)	338,070		
Barking Sands - Na Pali Coast (501-502,522)	27,845		
Hanalei - Moloa'a Bay (503,523)	107,734		
Anahola - Nawiliwili (504,524)	150,538		
Sand Is. - Ala Wai (400,420)	31,990		
Pearl Harbor - Barbers Pt. (401,421)	204,429		
Barbers Pt. - Kaena Pt. (402-403,422-423)	667,466		
Kaena Pt. - Kahuku (404-405,424-425)	656,860		
Laie Pt. - Kahana Bay (406-426)	207,980		
Kaneohe Bay (407,427)	263,065		
Kailua Bay - Makapuu Pt. (408,428)	30,413		
Makapuu Pt. - Diamond Head (409)	33,541		

Appendix D - Sea Landings by Area Fished (cont.)

AREA (area catch code)	LBS. LANDED	LBS. SOLD	VALUE(\$)
Kawai (Molokai) Channel (332,429)	21,918		
Penguin Bank (331)	102,352		
Kealaikahiki Channel (327)	28,517		
Alenuihaha Channel (324-325)	141,146		
Auau, Kalohi & Pailolo Channels (321)	13,919		
Alalakeiki Channel (320)	74,820		
Molokai (310-314,333)	27,846		
Lanai (308-309,328)	115,492		
Kahoolawe (306-307,326)	12,783		
Makena - Hana (304-305)	53,553		
Hana - Kahului (302-303,322-323)	221,693		
Honolua - Lahaina (301)	4,649		
Lahaina - Makena (300)	53,213		
Miloli'i - South Pt. (100,108,120,128)	146,643		
Punaluu - Kalapana (107,127)	100,488		
Kona Coast (101,121)	902,358		
Keahole - Kawaihae (102,122)	151,928		
Kohala - Hamakua Coast (103-104,123-124)	60,461		
Hilo (105,125)	280,172		
Puna - Kalapana (106,126)	254,843		
Other (all other area codes from Fisheries Chart No. 1 not listed above)	231,743		
SUBTOTAL	5,827,859		
Northwestern Hawaiian Islands offshore - 200 mile EEZ (refer to Fisheries Chart No. 2)			
Nihoa (16223C,16123A,16222I)	13,002		
Twin Bank (16323C,16223A) ³	---		
Necker (16423D,16423E,16423F,16423B,16423C) ³	19,124		
Brooks Bank (16624A,16623G)	20,512		
St. Rogation (16724F,16724C)	10,122		
Gardner Pinnacles (16825C,16725A,16824I,16824F,16724G,16724D)	12,352		
Maro Reef (17025D, 17025E, 17025A, 17025B) ³	---		
Laysan ³	---		
North Hampton (17225E, 17225F, 17225C)	16,856		
Pioneer Bank (17326B, 17326C, 17325H, 17325I)	2,189		
Lisianski (17426C, 17326A, 17425I, 17325G)	4,570		
Other (all other areas codes from Fisheries Chart No. 2 not listed above) ³	67,271		
SUBTOTAL	165,998		
Other areas (not in Fisheries Charts 1 & 2) (other mid-ocean and missing area fished codes)	26,093,794		
TOTAL	32,087,651		

³Due to low level of fishermen reporting and to preserve confidentiality, data for these fishing methods and areas pooled under their respective group totals.

Appendix E - FAD Catches by Island and species

Hawaii FADs

<i>SPECIES</i>	<i>A</i>	<i>B</i>	<i>C</i>	<i>D</i>	<i>E</i>	<i>F</i>	<i>G</i>	<i>HK</i>	<i>KH</i>	<i>OTEC</i>	<i>QQ</i>	<i>RN</i>	<i>SS</i>	<i>TT</i>	<i>UU</i>	<i>VV</i>	<i>XX</i>	<i>ZZ</i>
Aku	--	5,991	3,957	5,865	614	4,797	1,978	10,203	3,175	7,121	472	254	--	948	4,875	3,252	--	--
Bigeye	--	1,106	814	622	**	2,907	--	4,008	**	1,165	**	**	--	**	514	331	--	--
Kawakawa	--	--	--	--	--	--	--	--	--	--	--	--	--	--	**	**	--	--
Keokeo	--	--	--	--	--	--	--	--	--	--	--	--	--	--	--	--	--	--
Tombo	--	841	2,581	**	**	**	**	--	**	--	--	--	--	**	1,396	1,130	--	--
Yellowfin	--	10,681	8,760	11,381	2,699	16,660	11,134	15,185	12,127	12,864	654	1,985	--	1,977	3,370	5,639	**	--
Tuna (misc.)	--	**	--	--	--	**	--	**	--	**	--	--	--	--	--	**	--	--
Black marlin	--	--	--	--	--	--	--	--	--	--	--	--	--	--	--	**	--	--
Blue marlin	--	2,942	701	1,339	--	3,460	2,114	3,890	--	317	--	--	--	--	--	4,805	--	--
Sailfish	--	--	--	--	--	--	--	--	--	--	--	--	--	--	--	--	--	--
Shortbill spearfish	--	**	--	--	--	237	--	--	--	**	--	--	--	--	**	66	--	--
Striped marlin	--	--	--	604	--	**	--	1,206	--	157	--	--	--	--	--	**	--	--
Swordfish	--	**	--	--	--	--	--	**	--	--	--	--	--	--	--	**	--	--
Billfish (unclass.)	--	--	--	--	--	--	--	**	--	--	--	--	--	--	--	--	--	--
Mahimahi	**	761	712	4,606	269	1,977	2,905	10,162	4,246	2,405	400	510	**	1,358	254	547	**	**
Ono	--	2,433	676	2,834	865	546	284	547	2,555	1,188	263	--	--	903	1,750	760	--	**
Kahala	--	--	--	--	--	--	--	--	--	--	--	--	--	--	**	--	--	--
Akule	--	--	--	--	--	--	--	--	--	--	--	--	--	--	**	**	--	--
Kaku	--	--	--	--	--	--	--	--	--	**	--	--	--	--	--	--	--	--
Kamanu	--	**	--	**	--	**	55	66	**	**	--	**	--	--	**	--	--	--
Hahalalu	--	--	--	--	--	--	--	--	--	--	--	--	--	--	--	--	--	--
Opelu	--	**	**	--	--	--	--	**	--	--	--	--	--	--	**	**	--	--
Squid	--	--	--	**	--	--	**	--	--	--	--	--	--	--	--	--	--	--
Uku	--	**	--	**	--	**	--	**	--	--	--	--	--	--	--	--	--	--
Mako Shark	--	--	--	--	--	--	--	--	--	--	--	--	--	--	--	--	--	--
Oceanic white tip	--	--	**	--	--	--	--	--	--	--	--	--	--	--	--	--	--	--
White Ulua/Papio	--	--	--	--	--	--	--	--	--	--	--	--	--	--	--	--	--	--
Unclass./Misc.**	--	1,090	--	878	145	816	160	292	522	206	--	--	--	--	192	831	--	--
TOTAL	**	25,845	18,201	28,129	4,592	31,400	18,630	45,559	22,625	25,423	1,789	2,749	**	5,186	12,351	17,361	**	**

Oahu FADs

<i>SPECIES</i>	<i>J</i>	<i>P</i>	<i>R</i>	<i>S</i>	<i>T</i>	<i>U</i>	<i>V</i>	<i>X</i>	<i>BO</i>	<i>CO</i>	<i>HH</i>	<i>II</i>	<i>LL</i>	<i>MM</i>
Aku	7,882	87,637	11,476	1,300	1,185	9,181	270	30,918	8,231	3,139	24,414	5,548	65,278	44,869
Bigeye	872	**	**	--	**	**	--	2,607	256	**	88	129	2,377	7,613
Bluefin	--	--	--	--	--	--	--	--	--	--	--	--	--	--
Kawakawa	**	**	--	**	**	**	**	--	**	--	**	**	**	**
Keokeo	--	--	**	--	--	--	--	--	--	--	--	--	--	--
Tombo	--	--	--	--	--	--	--	--	--	**	--	--	--	--
Yellowfin	45,022	15,431	6,246	2,595	926	2,084	443	41,935	12,662	11,404	13,260	14,037	20,155	19,302
Tuna (misc.)	**	--	--	--	--	--	--	**	--	--	--	--	--	--
Black marlin	--	--	--	--	--	--	--	**	--	--	--	--	--	--
Blue marlin	1,883	**	16,900	12,620	**	--	1,687	3,542	8,361	12,083	4,117	3,588	431	2,446
Sailfish	--	--	--	--	--	--	--	--	**	--	--	--	--	**
Shortbill spearfish	118	**	79	--	--	**	--	**	493	**	**	**	**	**
Striped marlin	**	**	**	522	--	--	**	275	**	**	414	--	**	**
Billfish (misc.)	--	--	**	--	--	--	--	--	--	--	--	--	--	--
Kaku	--	--	**	**	--	--	**	**	**	**	**	**	--	--
Mahimahi	9,824	4,632	2,276	891	1,414	1,904	361	10,029	7,989	2,850	7,397	1,876	4,889	6,060
Ono	756	514	579	453	223	266	152	1,698	709	300	789	387	499	1,098
Kahala	--	--	--	--	--	--	--	--	--	--	--	--	--	--
Akule	--	--	**	--	--	--	**	--	**	--	--	--	--	--
Opelu	--	--	2,304	3,855	--	--	5,041	--	**	--	--	--	--	--
Kamanu	--	**	--	--	--	--	**	--	--	--	--	--	--	--
Nunu	--	--	--	--	--	--	--	--	--	--	--	--	--	--
Uku	--	--	**	--	--	--	--	**	--	--	--	**	--	--
Shark (misc.)	--	--	--	--	--	--	--	--	--	--	--	**	--	--
Ulua (misc.)	--	--	--	--	--	--	--	--	**	--	--	--	--	--
Unclass./Misc.**	126	418	5,312	64	259	232	267	544	2,325	829	--	196	190	324
TOTAL	66,483	108,632	45,172	22,300	4,007	13,667	8,221	91,548	41,026	30,605	50,479	25,761	93,819	81,712

**Due to low level of fishermen reporting and to preserve confidentiality, data for these FADs by species are not listed.

Maui, Kahoolawe, Lanai, and Molokai FADs

<i>SPECIES</i>	<i>I</i>	<i>K</i>	<i>M</i>	<i>N</i>	<i>O</i>	<i>Q</i>	<i>CC</i>	<i>DD</i>	<i>FF</i>	<i>HO</i>	<i>HS</i>	<i>JJ</i>	<i>LA</i>	<i>MC</i>	<i>NL</i>	<i>SO</i>
Aku	--	695	2,727	2,607	126	5,116	**	**	1,505	10,746	451	378	**	3,535	290	--
Bigeye	**	154	5,112	788	--	3,820	--	--	1,877	2,087	1,031	2,290	--	1,946	946	--
Kawakawa	--	**	**	--	--	--	--	--	--	--	**	--	--	**	--	--
Keokeo	--	**	--	--	--	--	--	--	--	--	--	--	--	--	--	--
Tombo	--	--	--	--	--	--	--	**	**	--	--	--	--	--	--	--
Yellowfin	--	427	16,514	3,829	214	14,905	--	176	6,395	41,689	1,555	1,648	**	2,940	1,569	--
Tuna (misc.)	--	--	--	--	--	**	--	--	--	606	--	--	--	--	--	--
Black marlin	--	--	--	--	--	--	--	--	--	--	--	--	--	**	--	--
Blue marlin	--	**	850	**	--	2,176	--	1,128	--	3,832	--	--	**	3,105	--	--
Sailfish	--	--	--	--	--	--	--	--	--	--	**	--	--	**	--	--
Shortbill spearfish	--	193	**	**	--	--	**	--	--	**	--	--	**	267	**	--
Striped marlin	**	**	--	--	**	--	--	--	**	**	--	**	--	**	--	--
Kaku	--	--	--	--	**	--	--	--	--	--	--	--	--	**	--	--
Mahimahi	422	3,228	7,505	4,234	327	8,547	2,339	3,401	7,983	15,019	1,295	1,022	499	6,573	2,330	**
Ono	**	1,118	273	138	287	1,058	**	991	789	2,222	**	**	165	862	523	--
Uku	--	**	--	--	--	--	--	--	--	--	--	--	**	--	--	--
Akule	--	--	--	--	**	--	--	--	--	--	--	--	--	--	--	--
Opelu	--	--	--	--	--	**	--	--	--	--	--	--	--	--	--	--
Kamanu	**	--	309	--	--	**	--	**	--	**	--	--	--	--	--	--
Unclass./Misc.**	319	1,316	--	264	2,617	307	330	--	--	107	80	125	482	507	--	--
TOTAL	741	7,131	33,290	11,860	3,571	35,929	2,669	5,696	18,549	76,308	4,412	5,463	1,146	19,735	5,658	**

Kauai FADs

<i>SPECIES</i>	<i>Z</i>	<i>AA</i>	<i>BB</i>	<i>CK</i>	<i>DK</i>	<i>EK</i>	<i>KK</i>	<i>PP</i>	<i>WK</i>
Aku	615	1,391	1,436	1,906	108	471	451	659	2,953
Bigeye	--	**	**	**	--	--	--	**	458
Kawakawa	--	--	--	**	--	**	--	--	**
Tombo	--	**	--	--	--	--	--	--	--
Yellowfin	9,210	28,520	9,551	6,122	627	712	9,981	13,424	6,736
Tuna (misc.)	--	--	--	--	--	--	--	--	**
Black marlin	--	**	--	--	--	--	--	--	--
Blue marlin	3,238	1,253	1,205	1,933	**	**	405	607	2,479
Sailfish	--	**	--	**	--	--	**	--	--
Shortbill spearfish	**	--	--	**	--	--	**	--	**
Striped marlin	**	**	**	**	--	**	--	--	**
Kaku	--	--	**	**	**	--	--	--	**
Mahimahi	707	2,804	1,267	1,944	358	573	1,784	1,328	3,105
Ono	542	1,041	633	526	**	574	89	604	1,061
Opelu	--	**	--	--	--	--	--	**	--
Kamanu	--	--	--	--	**	--	--	--	--
Uku	--	--	**	--	--	--	--	--	--
White	--	--	--	--	--	--	--	--	**
Unclass./Misc.**	302	434	533	715	474	487	--	232	527
TOTAL	14,614	35,443	14,625	13,146	1,567	2,817	12,710	16,854	17,319

Other FADs

<i>SPECIES</i>	<i>HC</i>	<i>MO</i>	<i>W2</i>	<i>W3</i>	<i>W4</i>	<i>W8</i>
Aku	5,756	3,744	246	**	--	112
Bigeye	13,774	2,103	7,303	31,744	**	**
Tombo	--	--	--	--	--	--
Yellowfin	27,503	2,694	24,736	40,065	--	**
Blue marlin	1,062	--	--	**	--	**
Shortbill spearfish	--	--	--	**	--	--
Striped marlin	**	--	--	--	--	--
Kaku	--	--	--	**	--	--
Mahimahi	21,156	956	1,284	6,428	**	506
Ono	3,272	144	**	443	--	--
Kamanu	**	--	--	--	--	--
White	**	--	--	--	--	--
Unclass./Misc.**	177	--	--	--	--	1,343
TOTAL	72,700	9,641	33,569	78,680	--	1,961

**Due to low level of fishermen reporting and to preserve confidentiality, data for these FADs by species are not listed.

Appendix F - FAD Catches by Island, FAD and Fishing Trip Count

Island	FAD	Location	# Mon. on Station	Fishing Method											
				Trolling			Tuna Handline			Aku boat			Other		
				Lbs.	# Trips	Lbs./ Trip	Lbs.	# Trips	Lbs./ Trip	Lbs.	# Trips	Lbs./ Trip	Lbs.	# Trips	Lbs./ Trip
Hawaii	A	South Pt.	6.0	***											
	B	Miloli'i	12.0	15,429	246	62.7	9,671	107	90.4				768	9	85.3
	C	Loa Pt.	8.4	9,619	173	55.6	8,091	74	109.3				660	11	60.0
	D	Kumukahi	12.0	18,840	159	118.5	7,918	50	158.4				1,385	8	173.1
	E	Leleiwi	4.3	1,178	21	56.1	2,946	18	163.7				***		
	F	Kailua-Kona	12.0	19,911	292	68.2	9,998	95	105.2				1491	15	99.4
	G	Pepe'ekeo	8.5	13,241	97	136.5	4,907	32	153.3				490	6	81.7
	HK	Hakalau	12.0	26,656	163	163.5	11,248	37	304.0				7,674	37	207.4
	KH	Kahena	12.0	9,990	74	135.0	11,585	53	218.6				1,162	6	193.7
	OT	Waikoloa Pt.	11.2	24,038	166	144.8	1,385	18	76.9						
	QQ	Makuu	12.0	1,574	37	42.5	***						233	3	77.7
	RN	Palima Pt.	12.0	862	16	53.9	1,915	17							
	SS	Apua Pt.	1.8	***											
	TT	Kanewa'a	6.0	4,642	38	122.2	549	9	61.0				***		
	UU	Auau	11.2	7,321	147	49.8	3,489	41	85.1				1,541	17	90.6
	VV	Kahalu'u	9.0	11,457	218	52.6	4,232	47	90.0				1,672	35	47.8
	XX	Puako	2.8	***											
ZZ	Waima Pt.	4.4	***												
Oahu	J	Waiale'e	12.0	58,600	286	204.9	3,399	14	242.8	***			***		
	P	Penguin Banks	10.5	11,730	130	90.2	***			***			***		
	R	Makaha	12.0	37,257	355	104.9	***						7,790	28	278
	S	Pokai Bay	12.0	18,400	208	88.5							3,900	33	118
	T	Makapu'u	12.0	3,927	58	67.7							***		
	U	Kane'ohe	8.3	4,968	70	71.0	***			***			***		
	V	Makua	10.7	3,154	55	57.3	***						5,067	54	94
	X	Kahuku	12.0	58,601	346	169.4	3,114	19	163.9	***			266	4	67
	BO	Barbers Pt.	12.0	38,998	452	86.3							2,030	7	290
	CO	Ka'ena Pt.	11.1	29,542	191	154.7	***						675	5	135
	HH	Pearl Harbor	9.6	21,179	263	80.5				***					
	II	Hale'iwa	11.3	23,216	162	143.3	***			***			***		
	LL	Hau'ula	11.2	15,167	144	105.3	1,114	13	85.7	***			***		
	MM	Mokapu Pt.	10.9	23,581	228	103.4	2,272	15	151.5	***			196	5	39

***Due to low level of fishermen reporting and to preserve confidentiality, data for these FADs by fishing methods are not listed.

Island	FAD	Location	# Mon. on Station	Fishing Method											
				Trolling			Tuna Handline			Aku boat			Other		
				Lbs.	# Trips	Lbs./ Trip	Lbs.	# Trips	Lbs./ Trip	Lbs.	# Trips	Lbs./ Trip	Lbs.	# Trips	Lbs./ Trip
Maui County	I	Halona Pt.	9.5	741	24	30.9									
	K	Palaoa	10.2	7,131	249	28.6									
	M	Hana Bay	10.8	32,317	142	227.6	526	5	105.2						***
	N	Cape Halawa	9.7	11,813	59	200.2									***
	O	Kalaupapa	9.7	916	22	41.6			***						***
	Q	Pauwela Pt.	10.6	32,082	221	145.2	3,829	19	201.5						***
	CC	Ka'ena Pt.	5.4	2,669	32	83.4									
	DD	Opana Pt.	12.0	5,708	122	46.8			***						
	FF	Pukaulua Pt.	12.0	18,880	92	205.2									
	HO	Ho'olawa Pt.	12.0	63,361	374	169.4	12,371	52	237.9						***
	HS	Nakaohu Pt.	4.5	4,412	49	90.0									
	JJ	Kamohio	7.7	5,463	29	188.4									
	LA	Lahaina	4.5	1,146	46	24.9									
	MC	Palaoa	12.0	19,418	248	78.3			***						
	NL	Nu'u	12.0	5,067	69	73.4			***						***
SO	Kahoolawe	2.5	129	4	32.3										
Kauai	Z	Kipukai	8.1	11,833	179	66.1	1,581	8	197.625						***
	AA	Port Allen	10.7	13,169	174	75.7	20,252	70	289.314				2,022	12	168.5
	BB	Moloa'a	12.0	10,156	88	115.4	3,571	16	223.2				902	6	150.333
	CK	Makahu'ena Pt.	12.0	12,017	235	51.1	1,129	6	188.2						
	DK	Anahola	11.2	1,347	27	49.9			***						***
	EK	Hanalei	8.1	2,742	46	59.6			***						
	KK	Waimea	9.4	12,422	70	177.5									***
	PP	Koloa	9.8	5,128	85	60.3	11,565	35	330.4				161	8	20.125
	WK	Wailua	12.0	16,043	251	63.9	1,136	9	126.2						***

***Due to low level of fishermen reporting and to preserve confidentiality, data for these FADs by fishing methods are not listed.