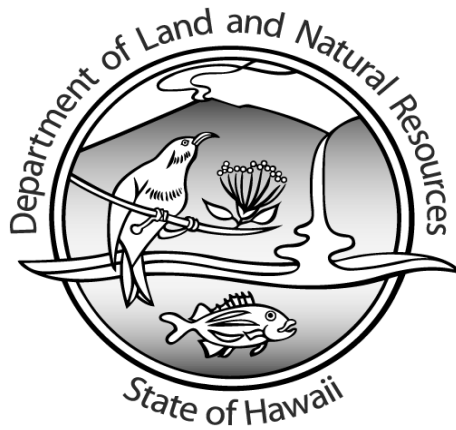


COMMERCIAL MARINE LANDINGS SUMMARY TREND REPORT

CALENDAR YEAR 2010



**DIVISION OF AQUATIC RESOURCES
DEPARTMENT OF LAND AND NATURAL RESOURCES
STATE OF HAWAII**

TABLE OF CONTENTS

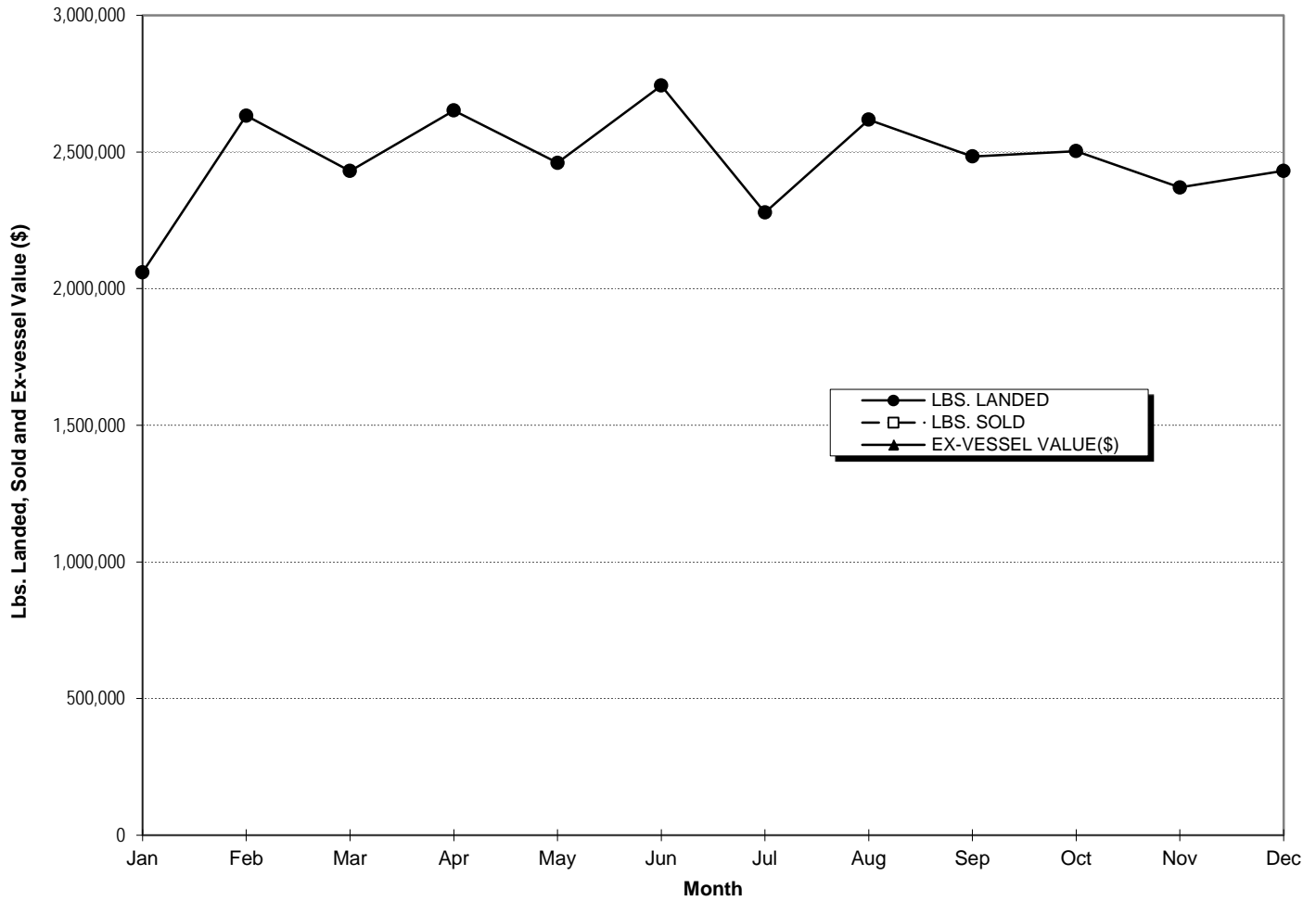
	Page No.
I. INTRODUCTION	1
II. CHARTS	
A. TOTAL SEA LANDINGS	
1. Annual Monthly Trends	2
2. Annual 5-year Trends	3
B. SEA LANDINGS BY SPECIES GROUPS	
1. Annual Monthly Trends	4
2. Annual 5-year Trends	5
C. SEA LANDINGS BY FISHING METHOD	
1. Annual Monthly Trends	6
2. Annual 5-year Trends	7
D. SEA LANDINGS BY PORT	
1. Annual Monthly Trends	8
2. Annual 5-year Trends	9
II. APPENDICES	
A. Sea Landings by Species	10
B. Sea Landings by Fishing Method	12
C. Sea Landings by Island	12
D. Sea Landings by Area Fished	12
E. FAD Catches by Island and Species	13
F. FAD Catches by Island, FAD and Fishing Trip Count	16

Note: Data incomplete due to late submission and processing of fish catch records.

INTRODUCTION

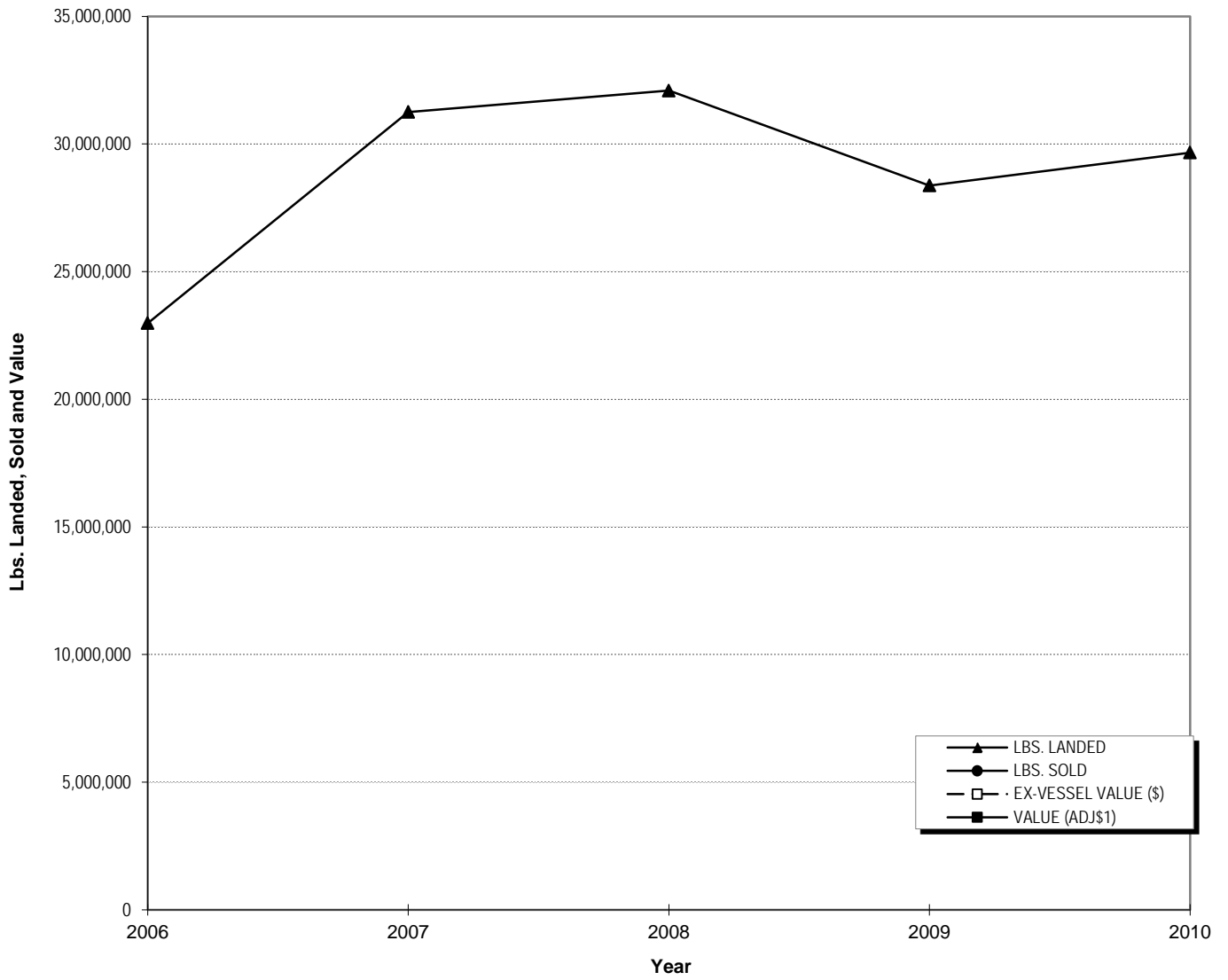
The information presented in this Commercial Marine Landing Summary Trend Report is compiled from fishing reports submitted by licensed fishermen. Commercial fishers are required to obtain commercial marine licenses and submit fishing reports to DLNR-DAR. In previous editions of these summary trend reports, including 1997 through 2001, only ex-vessel landing data (pounds sold and value of pounds sold) were reported. On October 2002, DLNR-DAR implemented new and revised commercial fishing report forms to improve the collection of fishing effort and total catch data. Since then commercial fishers no longer report ex-vessel landings on their fishing reports. The ex-vessel landing data are collected from commercial fish dealers. DLNR-DAR is in the process of integrating fishing effort and catch data from fishing report reports with ex-vessel landing data from commercial marine dealer reports. Until this process is completed, ex-vessel landing information by fisheries will not be available. Therefore, this commercial marine landings summary trend report only contains catch data or pounds landed. When the data integration process is completed, this summary trend report will be revised and the catch data will be replaced with ex-vessel value landing data.

**CHART A.1
TOTAL SEA LANDINGS ANNUAL MONTHLY TRENDS, 2010**



MONTH	LBS. LANDED	LBS. SOLD	EX-VESSEL VALUE(\$)
<i>Jan</i>	2,059,964		
<i>Feb</i>	2,632,985		
<i>Mar</i>	2,430,562		
<i>Apr</i>	2,652,013		
<i>May</i>	2,460,228		
<i>Jun</i>	2,743,053		
<i>Jul</i>	2,278,847		
<i>Aug</i>	2,618,427		
<i>Sep</i>	2,483,861		
<i>Oct</i>	2,503,321		
<i>Nov</i>	2,370,032		
<i>Dec</i>	2,431,047		
TOTAL	29,664,340		

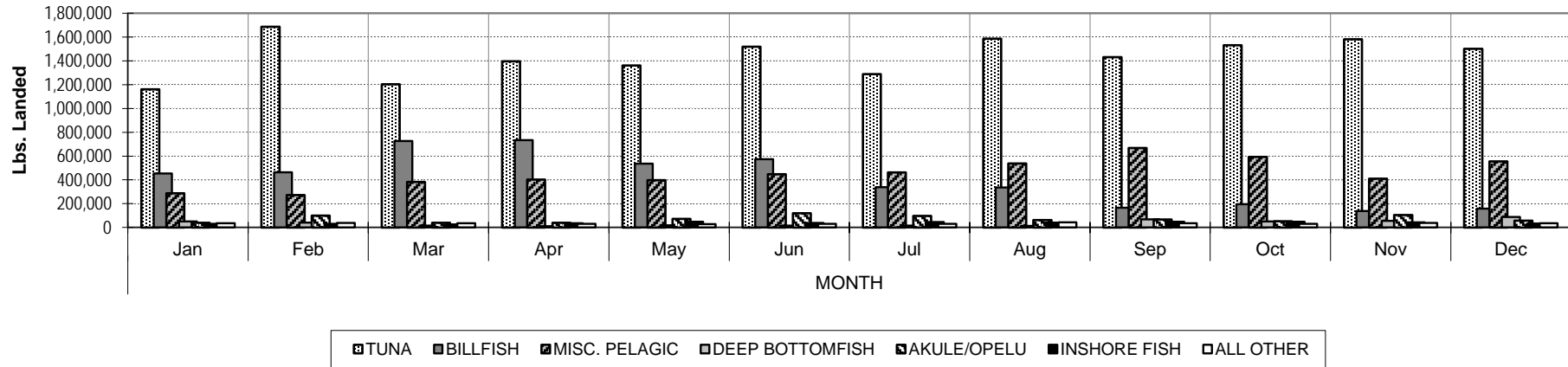
**CHART A.2
TOTAL SEA LANDINGS ANNUAL 5 - YEAR TRENDS. 2006- 2010**



YEAR	LBS. LANDED	LBS. SOLD	EX-VESSEL VALUE (\$)	HCPI¹	VALUE (ADJ\$¹)
2006	22,983,446				
2007	31,250,790				
2008	32,092,568				
2009	28,373,899				
2010	29,664,340				

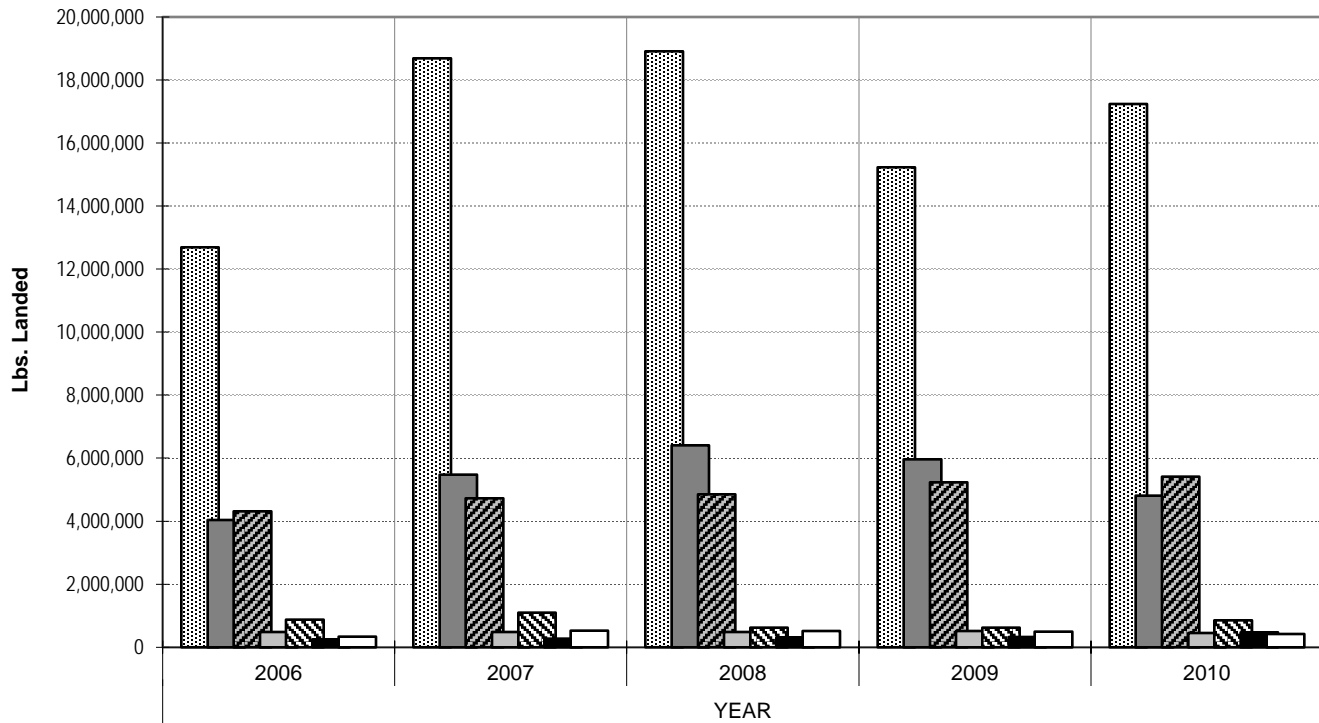
¹ Honolulu Consumer Price Index (all wage earners)

**CHART B.1
SEA LANDINGS BY SPECIES GROUP ANNUAL MONTHLY TRENDS, 2010**



Calendar Year 2010		MONTH												YEAR
SPECIES GROUP		Jan	Feb	Mar	Apr	May	Jun	Jul	Aug	Sep	Oct	Nov	Dec	TOTAL
TUNA	Lbs. Landed	1,161,708	1,685,429	1,203,710	1,396,725	1,360,768	1,518,116	1,288,044	1,586,478	1,430,445	1,531,412	1,579,682	1,500,007	17,242,524
	Lbs. Sold													
	Ex-vessel Value (\$)													
BILLFISH	Lbs. Landed	452,579	462,770	725,648	733,338	535,245	572,791	337,983	336,562	166,387	195,230	138,143	157,433	4,814,109
	Lbs. Sold													
	Ex-vessel Value(\$)													
MISC. PELAGIC	Lbs. Landed	287,321	272,753	383,258	402,242	397,716	446,602	462,025	536,679	668,666	593,057	410,018	556,348	5,416,685
	Lbs. Sold													
	Ex-vessel Value(\$)													
DEEP BOTTOMFISH	Lbs. Landed	51,448	40,802	15,011	11,533	18,776	15,944	17,071	12,665	67,405	50,404	56,521	89,436	447,016
	Lbs. Sold													
	Ex-vessel Value (\$)													
AKULE/OPELU	Lbs. Landed	40,855	100,598	39,887	40,528	71,483	120,553	96,315	62,854	66,613	53,353	104,360	57,919	855,318
	Lbs. Sold													
	Ex-vessel Value (\$)													
INSHORE FISH	Lbs. Landed	30,692	30,847	25,880	36,391	48,112	38,325	45,397	40,798	48,700	48,911	42,682	34,656	471,391
	Lbs. Sold													
	Ex-vessel Value (\$)													
ALL OTHER	Lbs. Landed	35,361	39,786	37,168	31,256	28,128	30,722	32,012	42,391	35,645	30,954	38,626	35,248	417,297
	Lbs. Sold													
	Ex-vessel Value (\$)													
TOTAL	Lbs. Landed	2,059,964	2,632,985	2,430,562	2,652,013	2,460,228	2,743,053	2,278,847	2,618,427	2,483,861	2,503,321	2,370,032	2,431,047	29,664,340
	Lbs. Sold													
	Ex-vessel Value (\$)													

**CHART B.2
SEA LANDINGS BY SPECIES GROUPS ANNUAL 5 - YEAR TRENDS, 2006 - 2010**

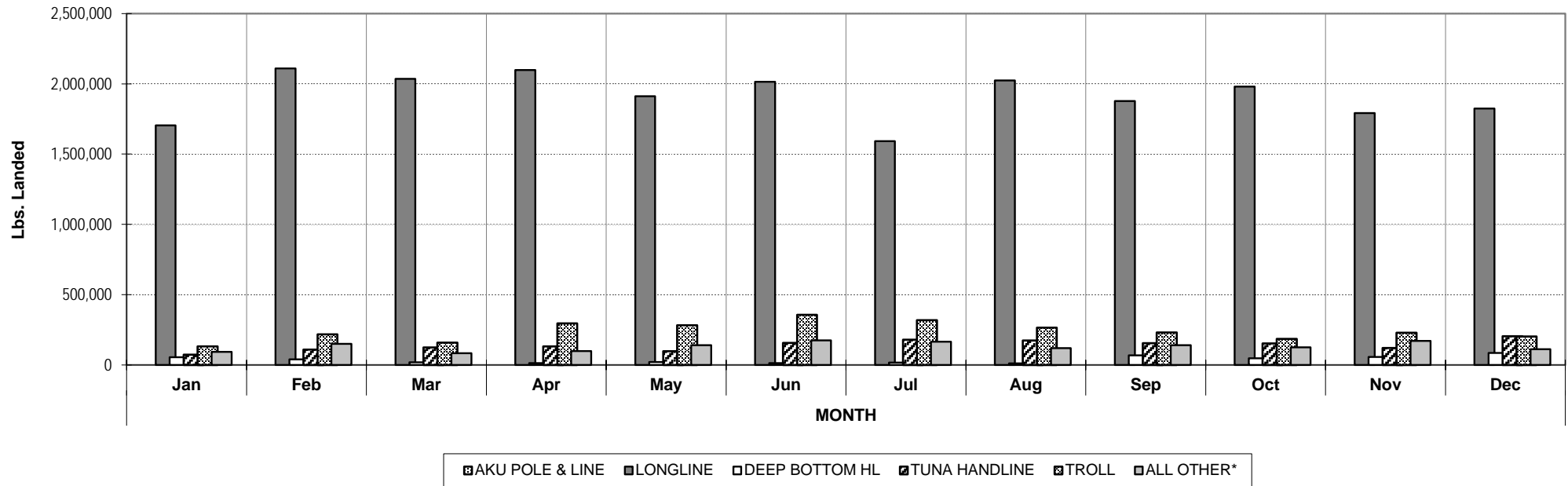


TUNA
 BILL & SWORDFISH
 MISC. PELAGIC
 DEEP BOTTOMFISH
 AKULE/OPELU
 INSHORE FISH
 ALL OTHER

<i>Calendar Year</i>		<i>YEAR</i>				
SPECIES GROUP		2006	2007	2008	2009	2010
TUNA	<i>Lbs. Landed</i>	12,691,808	18,683,967	18,911,155	15,233,159	17,242,524
	<i>Lbs. Sold</i>					
	<i>Value (Adj\$)¹</i>					
BILL & SWORDFISH	<i>Lbs. Landed</i>	4,041,439	5,471,993	6,405,615	5,966,427	4,814,109
	<i>Lbs. Sold</i>					
	<i>Value (Adj\$)¹</i>					
MISC. PELAGIC	<i>Lbs. Landed</i>	4,311,724	4,723,379	4,850,473	5,228,496	5,416,685
	<i>Lbs. Sold</i>					
	<i>Value (Adj\$)¹</i>					
DEEP BOTTOMFISH	<i>Lbs. Landed</i>	478,337	483,620	482,885	510,853	447,016
	<i>Lbs. Sold</i>					
	<i>Value (Adj\$)¹</i>					
AKULE/OPELU	<i>Lbs. Landed</i>	875,426	1,095,752	620,760	617,300	855,318
	<i>Lbs. Sold</i>					
	<i>Value (Adj\$)¹</i>					
INSHORE FISH	<i>Lbs. Landed</i>	251,298	269,324	310,035	327,978	471,391
	<i>Lbs. Sold</i>					
	<i>Value (Adj\$)¹</i>					
ALL OTHER	<i>Lbs. Landed</i>	333,414	522,755	511,645	489,686	417,297
	<i>Lbs. Sold</i>					
	<i>Value (Adj\$)¹</i>					
TOTAL	<i>Lbs. Landed</i>	22,983,446	31,250,790	32,092,568	28,373,899	29,664,340
	<i>Lbs. Sold</i>					
	<i>Value (Adj\$)¹</i>					

¹ Honolulu Consumer Price Index (all wage earners)

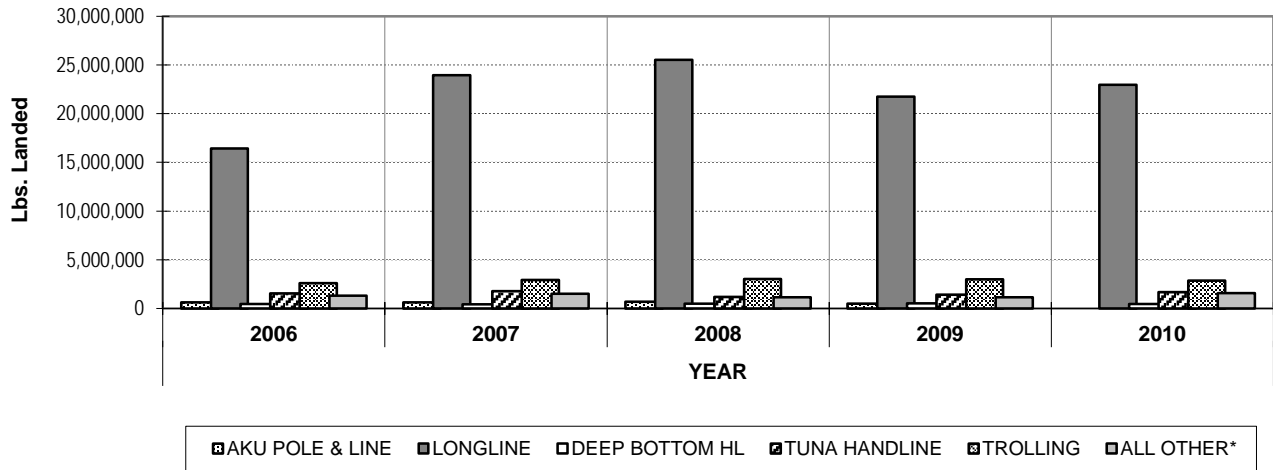
**CHART C.1
SEA LANDINGS BY FISHING METHOD ANNUAL MONTHLY TRENDS, 2010**



Calendar Year 2010		MONTH												YEAR TOTAL
METHOD		<i>Jan</i>	<i>Feb</i>	<i>Mar</i>	<i>Apr</i>	<i>May</i>	<i>Jun</i>	<i>Jul</i>	<i>Aug</i>	<i>Sep</i>	<i>Oct</i>	<i>Nov</i>	<i>Dec</i>	
AKU POLE & LINE	<i>Lbs. Landed</i>	*	*	*	*	*	*	*	*	*	*	*	*	*
	<i>Lbs. Sold</i>													
	<i>Ex-vessel Value (\$)</i>													
LONGLINE	<i>Lbs. Landed</i>	1,704,383	2,108,972	2,035,587	2,097,094	1,911,533	2,014,446	1,592,015	2,024,355	1,877,062	1,979,445	1,792,010	1,823,593	22,960,495
	<i>Lbs. Sold</i>													
	<i>Ex-vessel Value (\$)</i>													
DEEP BOTTOM HL	<i>Lbs. Landed</i>	54,568	40,306	20,150	12,976	20,843	14,076	17,614	12,176	68,786	47,117	56,425	86,391	451,428
	<i>Lbs. Sold</i>													
	<i>Ex-vessel Value (\$)</i>													
TUNA HANDLINE	<i>Lbs. Landed</i>	73,220	110,048	125,216	132,182	97,930	156,407	179,598	174,064	154,959	153,387	121,305	205,216	1,683,532
	<i>Lbs. Sold</i>													
	<i>Ex-vessel Value (\$)</i>													
TROLL	<i>Lbs. Landed</i>	131,509	217,652	159,439	295,237	283,201	356,470	318,597	265,218	231,414	185,342	229,104	202,635	2,875,818
	<i>Lbs. Sold</i>													
	<i>Ex-vessel Value (\$)</i>													
ALL OTHER*	<i>Lbs. Landed</i>	92,850	150,748	84,062	99,939	140,718	176,047	165,275	120,161	140,088	125,318	170,900	112,641	1,578,747
	<i>Lbs. Sold</i>													
	<i>Ex-vessel Value (\$)</i>													
TOTAL	<i>Lbs. Landed</i>	2,056,530	2,627,726	2,424,454	2,637,428	2,454,225	2,717,446	2,273,099	2,595,974	2,472,309	2,490,609	2,369,744	2,430,476	29,550,020
	<i>Lbs. Sold</i>													
	<i>Ex-vessel Value (\$)</i>													

*Due to low level of fishermen reporting and to preserve confidentiality, data for these methods are pooled under "ALL OTHER" group.

**CHART C.2
SEA LANDINGS FISHING METHOD ANNUAL 5 - YEAR TRENDS, 2006 - 2010**

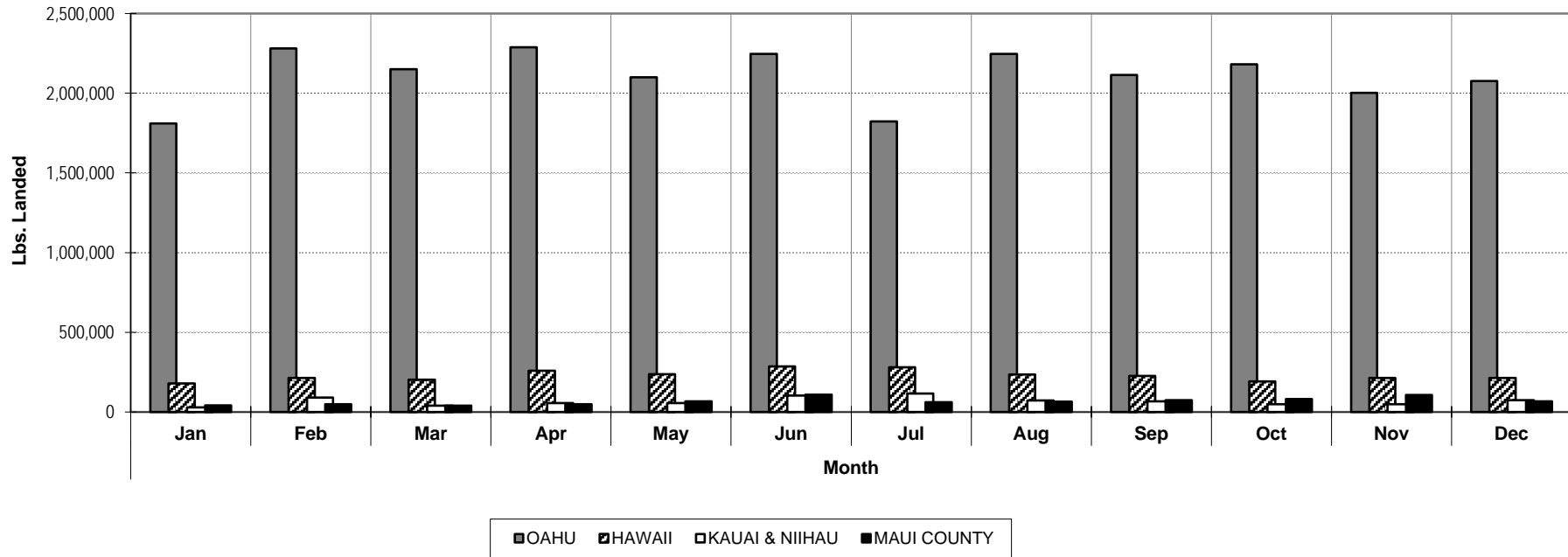


<i>Calendar Year</i>		<i>YEAR</i>				
FISHING METHOD		2006	2007	2008	2009	2010
AKU POLE & LINE	<i>Lbs. Landed</i>	630,590	643,029	702,193	506,695	*
	<i>Lbs. Sold</i>					
	<i>Value (Adj\$)¹</i>					
LONGLINE	<i>Lbs. Landed</i>	16,426,235	23,942,579	25,526,099	21,764,074	22,960,495
	<i>Lbs. Sold</i>					
	<i>Value (Adj\$)¹</i>					
DEEP BOTTOM HL	<i>Lbs. Landed</i>	452,878	440,082	503,955	523,748	451,428
	<i>Lbs. Sold</i>					
	<i>Value (Adj\$)¹</i>					
TUNA HANDLINE	<i>Lbs. Landed</i>	1,551,050	1,780,887	1,187,135	1,426,319	1,683,532
	<i>Lbs. Sold</i>					
	<i>Value (Adj\$)¹</i>					
TROLLING	<i>Lbs. Landed</i>	2,605,936	2,912,523	3,018,792	2,987,890	2,875,818
	<i>Lbs. Sold</i>					
	<i>Value (Adj\$)¹</i>					
ALL OTHER*	<i>Lbs. Landed</i>	1,316,757	1,531,690	1,154,394	1,165,173	1,578,747
	<i>Lbs. Sold</i>					
	<i>Value (Adj\$)¹</i>					
TOTAL	<i>Lbs. Landed</i>	22,983,446	31,250,790	32,092,568	28,373,899	29,550,020
	<i>Lbs. Sold</i>					
	<i>Value (Adj\$)¹</i>					

¹ Honolulu Consumer Price Index (all wage earners)

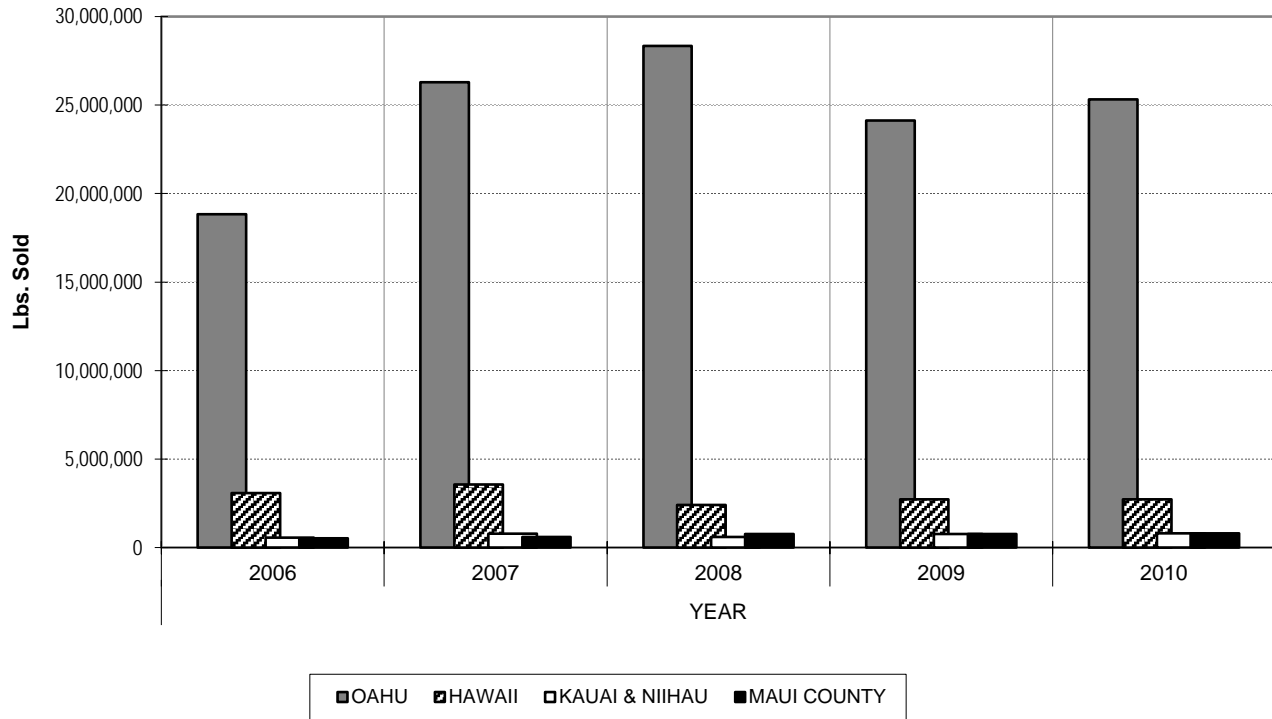
* Due to low level of fishermen reporting and to preserve confidentiality, data for these methods are pooled under "ALL OTHER" group.

**CHART D.1
SEA LANDINGS BY PORT ANNUAL MONTHLY TRENDS, 2010**



Calendar Year 2010		Month												TOTAL
PORT		Jan	Feb	Mar	Apr	May	Jun	Jul	Aug	Sep	Oct	Nov	Dec	
OAHU	<i>Lbs. Landed</i>	1,809,926	2,281,548	2,150,759	2,289,098	2,100,732	2,246,448	1,822,885	2,246,697	2,115,538	2,182,567	2,002,865	2,076,221	25,325,284
	<i>Lbs. Sold</i>													
	<i>Ex-vessel Value (\$)</i>													
HAWAII	<i>Lbs. Landed</i>	179,692	212,332	202,467	258,605	237,162	285,286	279,611	234,306	226,583	191,522	213,353	213,279	2,734,198
	<i>Lbs. Sold</i>													
	<i>Ex-vessel Value (\$)</i>													
KAUAI & NIIHAU	<i>Lbs. Landed</i>	28,749	89,969	38,758	56,497	55,720	103,485	115,739	72,261	67,341	48,949	47,791	74,451	799,710
	<i>Lbs. Sold</i>													
	<i>Ex-vessel Value (\$)</i>													
MAUI COUNTY	<i>Lbs. Landed</i>	41,597	49,136	38,578	47,813	66,614	107,834	60,612	65,163	74,399	80,283	106,023	67,096	805,148
	<i>Lbs. Sold</i>													
	<i>Ex-vessel Value (\$)</i>													
TOTAL	<i>Lbs. Landed</i>	2,059,964	2,632,985	2,430,562	2,652,013	2,460,228	2,743,053	2,278,847	2,618,427	2,483,861	2,503,321	2,370,032	2,431,047	29,664,340
	<i>Lbs. Sold</i>													
	<i>Ex-vessel Value (\$)</i>													

**CHART D.2
SEA LANDINGS BY PORT ANNUAL 5-YEAR TRENDS, 2006- 2010**



<i>Calendar Year</i>		<i>YEAR</i>				
PORT		2006	2007	2008	2009	2010
OAHU	<i>Lbs. Landed</i>	18,827,011	26,290,499	28,331,757	24,123,239	25,325,284
	<i>Lbs. Sold</i>					
	<i>Value (Adj\$)¹</i>					
HAWAII	<i>Lbs. Landed</i>	3,085,746	3,560,404	2,400,633	2,719,908	2,734,198
	<i>Lbs. Sold</i>					
	<i>Value (Adj\$)¹</i>					
KAUAI & NIIHAU	<i>Lbs. Landed</i>	554,203	791,542	594,863	767,019	799,710
	<i>Lbs. Sold</i>					
	<i>Value (Adj\$)¹</i>					
MAUI COUNTY	<i>Lbs. Landed</i>	516,486	608,345	765,315	763,733	805,148
	<i>Lbs. Sold</i>					
	<i>Value (Adj\$)¹</i>					
TOTAL	<i>Lbs. Landed</i>	22,983,446	31,250,790	32,092,568	28,373,899	29,664,340
	<i>Lbs. Sold</i>					
	<i>Value (Adj\$)¹</i>					

¹ Honolulu Consumer Price Index (all wage earners)

APPENDICES
Statistical Tables
Calendar 2010

Appendix A - Sea Landings by Species

SPECIES	LBS. LANDED	LBS. SOLD	VALUE(\$)	SPECIES	LBS. LANDED	LBS. SOLD	VALUE(\$)
TUNAS				AKULE/OPELU			
Aku	412,473			Akule	552,652		
Bigeye	13,114,533			Hahalalu	4,609		
Bluefin ²	---			Opelu	297,458		
Kawakawa	9,070			Opelu Mama	599		
Keokeo	69			SUBTOTAL	855,318		
Tombo	915,137						
Yellowfin	2,774,639			JACKS			
Unclassified ²	16,603			Barred-jack	192		
SUBTOTAL	17,242,524			Butaguchi	798		
				Dobe	593		
BILLFISHES & SWORDFISH				Gunkan	3,349		
Black marlin	5,010			Kagami	480		
Blue marlin	1,000,036			Kamanu	4,178		
Sailfish	33,095			Lae	286		
Shortbill spearfish	283,405			Menpachi (sasa)	683		
Striped marlin	344,370			No-bite ²	---		
Swordfish	3,147,772			Omaka	33		
Unclassified	421			Omilu	9,065		
SUBTOTAL	4,814,109			Paopao	386		
				Papa	6,849		
MISC. PELAGIC FISHES				White	18,807		
Kaku	27,139			Unclass./misc. ²	1,329		
Mahimahi	1,669,479			SUBTOTAL	47,028		
Monchong	594,830						
Ono	740,854			INSHORE FISHES			
Opah	1,808,992			<i>Parrotfishes</i>			
Walu	575,260			Panuhunuhu	493		
SUBTOTAL	5,416,554			Panunu	291		
				Uhu	70,839		
DEEP BOTTOMFISHES				<i>Goatfishes</i>			
Alfonsin	98			Kumu	9,875		
Aweoweo (Deepsea)	109			Malu	306		
Ehu	27,635			Moano	6,182		
Golden kale	259			Moana kali	2,291		
Hapuupuu	8,138			Munu	585		
Hogo	1,490			Weke nono	5,477		
Kahala	18,488			Weke pueo	12		
Kalekale	9,087			Weke, red	39,662		
Lehi	12,239			Weke, white	7,722		
Opakapaka	130,891			Weke (unclass.)	4,398		
Randall snapper	30			<i>Surgeonfishes</i>			
Taape	43,499			Api	73		
Ukikiki (gindai)	3,157			Black kole	78		
Uku	121,212			Kala	34,046		
Ulaula (onaga)	70,653			Kalalei	2,704		
Yellow-tail kale	15			Kole	3,806		
SUBTOTAL	447,000			Maiii	27		

²Due to low level of fishermen reporting and to preserve confidentiality, data for these species are pooled under their respective species group unclassified/miscellaneous or the Unclass./Misc. category.

SPECIES	LBS. LANDED	LBS. SOLD	VALUE(\$)	SPECIES	LBS. LANDED	LBS. SOLD	VALUE(\$)
INSHORE FISHES(cont.)				SHARKS			
<i>Surgeonfishes(cont.)</i>				Hammerhead	80		
Maiko	4,709			Mako	182,967		
Manini	17,536			Oceanic whitetip	121		
Naenae	10,013			Thresher	39,180		
Opelu kala	8,888			Unclass/misc	2,634		
Pakuikui	792			SUBTOTAL	224,982		
Palani	34,827			LOBSTERS			
Pualu	14,171			Ula, Green spiny	9,567		
<i>Damselfishes</i>				Ula, Red spiny	2,478		
Kupipi	91			Spiny (unclass./misc.)	243		
Maomao	2,404			Haanii (slipper) ²	---		
<i>Squirrelfishes</i>				Squammosus ²	60		
Alaihi	711			Slipper (unclass./misc.) ²	67		
Uu	80,844			SUBTOTAL	12,415		
Uukanipo	167			CRABS			
<i>Wrasses</i>				Aama	932		
Aawa	3,881			Kona	10,199		
Ea ²	172			Kuahonu	33,301		
Hilu ²	---			Samoan	1,687		
Hinalea	89			Crab (unclass./misc.)	18		
Kupoupou	24			SUBTOTAL	46,137		
Laenihi	3,526			SHRIMP			
Opule ²	---			Ensifer ²	---		
Poou	76			Laevigatus ²	---		
<i>Miscellaneous Inshore Fishes</i>				SUBTOTAL	---		
Ahaaha	592			OTHER ANIMALS			
Aholehole	2,419			Hee (day tako)	34,120		
Amaama	6,603			Hee pu loa (night tako) ²	---		
Awa	1,710			Hee (unclass./misc.) ³	92		
Awaawa	1,137			Lole (sea cucumber)	254		
Aweoweo	3,713			Muhee (squid)	6,294		
Humuhumu	1,277			Opihi makaiauli	4,321		
Iheihe	181			Opihi 'alina	21,944		
Kawelea	3,103			Opihi (unclass.)	495		
Moi	731			SUBTOTAL	67,520		
Mu	7,854			SHELLS²			
Nenu	31,695			SUBTOTAL	---		
Nohu	2,159			SEAWEEDS			
Nunu	200			Limu kohu	4,809		
Oililepa	264			Limu ogo	1,791		
Oio	12,111			Limu wawaeiole	5,489		
Oopuhue	4			Unclass./misc.	526		
Pakii	17			SUBTOTAL	12,615		
Poopaa	980			CORALS			
Puhi (brown)	740			Black ²	---		
Puhi (white)	344			SUBTOTAL	---		
Puhi (misc.)	1,029			Unclass./misc. ²			
Roi	5,278				7,350		
Tilapia	7,177			TOTAL	29,664,340		
Toau	7,041						
Uouoa	495						
Wahanui	146						
SUBTOTAL	470,788						

Appendix B - Sea Landings by Fishing Method

FISHING METHOD	LBS. LANDED	LBS. SOLD	VALUE(\$)
Aku pole & line ³	---		
Longline	22,960,495		
Deepbottom handline	451,428		
Inshore handline	374,055		
Tuna handline	1,683,532		
Other handline ³	14,127		
Trolling	2,875,818		
Diving	240,638		
Net	750,756		
Trap	100,634		
Rod & reel (casting, dunking, etc.)	52,573		
Handpick (limu & opihi)	39,711		
Unclass./Misc. ³	120,573		
TOTAL	29,664,340		

Appendix C - Sea Landings by Island

ISLAND	LBS. LANDED	LBS. SOLD	VALUE(\$)
Oahu	25,325,284		
Hawaii	2,734,198		
Maui	763,746		
Kauai & Niihau	799,710		
Molokai	30,581		
Lanai	10,821		
STATE TOTAL	29,664,340		

Appendix D - Sea Landings by Area Fished

AREA (area catch code)	LBS. LANDED	LBS. SOLD	VALUE(\$)
Main Hawaiian Islands (refer to Fisheries Chart No. 1)			
Kaula (508,528)	26,340		
Kaulakahi Channel (521,525)	29,564		
Niihau (505-506,526,527)	65,417		
Makahuena Pt. - Kekaha (500,520)	466,505		
Barking Sands - Na Pali Coast (501-502,522)	21,027		
Hanalei - Moloa'a Bay (503,523)	53,474		
Anahola - Nawiliwili (504,524)	233,723		
Sand Is. - Ala Wai (400,420)	47,744		
Pearl Harbor - Barbers Pt. (401,421)	201,520		
Barbers Pt. - Kaena Pt. (402-403,422-423)	645,066		
Kaena Pt. - Kahuku (404-405,424-425)	319,661		
Laie Pt. - Kahana Bay (406-426)	157,623		
Kaneohe Bay (407,427)	158,991		
Kailua Bay - Makapuu Pt. (408,428)	35,997		
Makapuu Pt. - Diamond Head (409)	20,591		

Appendix D - Sea Landings by Area Fished (cont.)

AREA (area catch code)	LBS. LANDED	LBS. SOLD	VALUE(\$)
Kawai (Molokai) Channel (332,429)	19,545		
Penguin Bank (331)	117,093		
Kealaikahiki Channel (327)	40,080		
Alenuihaha Channel (324-325)	70,742		
Auau, Kalohi & Pailolo Channels (321)	26,028		
Alalakeiki Channel (320)	82,383		
Molokai (310-314,333)	58,042		
Lanai (308-309,328)	99,546		
Kahoolawe (306-307,326)	20,980		
Makena - Hana (304-305)	34,694		
Hana - Kahului (302-303,322-323)	287,049		
Honolua - Lahaina (301)	9,731		
Lahaina - Makena (300)	73,810		
Milolii - South Pt. (100,108,120,128)	172,471		
Punaluu - Kalapana (107,127)	144,116		
Kona Coast (101,121)	813,624		
Keahole - Kawaihae (102,122)	191,313		
Kohala - Hamakua Coast (103-104,123-124)	37,614		
Hilo (105,125)	290,809		
Puna - Kalapana (106,126)	451,571		
Other (all other area codes from Fisheries Chart No. 1 not listed above)	346,165		
SUBTOTAL	5,870,649		
Northwestern Hawaiian Islands offshore			
- 200 mile EEZ			
(refer to Fisheries Chart No. 2)			
Other (all other areas codes from Fisheries Chart No. 2 not listed above) ³	7,778		
SUBTOTAL	7,778		
Other areas (not in Fisheries Charts 1 & 2) (other mid-ocean and missing area fished codes)	23,785,913		
TOTAL	29,664,340		

³Due to low level of fishermen reporting and to preserve confidentiality, data for these fishing methods and areas pooled under their respective group totals.

Appendix E - FAD Catches by Island and species

Hawaii FADs

<i>SPECIES</i>	<i>A</i>	<i>B</i>	<i>C</i>	<i>D</i>	<i>E</i>	<i>F</i>	<i>G</i>	<i>HK</i>	<i>KH</i>	<i>OTEC</i>	<i>QQ</i>	<i>RN</i>	<i>SS</i>	<i>TT</i>	<i>UU</i>	<i>VV</i>	<i>XX</i>	<i>ZZ</i>
Aku	--	1,724	1,959	1,982	190	1,461	6,636	4,907	97	591	--	--	**	1,474	2,107	48	--	--
Bigeye	--	527	328	**	--	669	2,706	5,073	9,165	**	--	--	--	**	934	--	--	--
Bluefin	--	--	--	**	--	--	--	--	--	--	--	--	--	--	--	--	--	--
Kawakawa	--	--	--	--	--	--	--	--	--	--	--	--	**	--	--	**	--	--
Tombo	--	--	675	**	--	**	388	**	2,865	--	--	--	--	**	424	--	--	--
Yellowfin	--	7,455	10,583	9,748	766	7,441	20,694	5,350	23,824	4,159	--	**	166	16,148	3,984	776	--	**
Tuna (misc.)	--	--	**	**	**	--	**	--	--	--	--	--	--	--	**	--	--	--
Black marlin	--	--	--	**	--	--	**	--	--	--	--	--	--	--	--	--	--	--
Blue marlin	--	**	2,131	**	--	792	2,501	2,053	--	1,041	--	--	--	**	1,185	1,044	--	--
Sailfish	--	--	--	--	--	--	--	--	--	--	--	--	--	**	**	--	--	--
Shortbill spearfish	--	--	--	--	--	129	--	--	**	**	--	--	**	--	--	--	--	--
Swordfish	--	--	--	**	**	--	--	--	430	--	--	--	--	--	--	**	--	--
Kaku	--	--	**	--	--	--	--	--	--	**	--	--	--	--	--	--	--	**
Mahimahi	**	1,136	1,371	4,516	1,250	1,289	5,537	11,831	13,232	1,060	--	574	**	1,082	917	172	2,458	833
Ono	**	1,775	1,314	2,105	691	331	1,623	1,008	4,025	587	**	445	240	1,061	347	264	190	184
Walua	--	--	--	--	--	--	--	--	--	**	--	--	--	--	--	--	--	--
Kahala	--	--	--	--	--	--	--	--	--	--	--	--	--	--	--	**	--	--
Uku	--	**	--	**	**	--	--	--	--	--	--	--	--	--	--	--	--	--
Akule	--	--	--	**	--	--	--	--	**	--	--	--	**	--	--	--	--	--
Kamanu	--	**	12	15	**	--	98	115	--	--	--	--	**	**	--	--	--	--
Omilu	--	--	--	--	--	--	--	--	--	--	--	--	**	--	--	--	--	--
Kawalea	--	--	--	--	**	--	--	--	--	--	--	--	--	--	--	--	--	--
Opelu	--	--	--	**	**	--	--	**	--	--	--	--	--	--	**	**	--	--
Squid	--	--	--	--	**	--	--	--	**	--	--	--	--	--	--	--	--	--
Unclass./Misc.**	--	**	--	7,942	1,024	--	970	108	**	9,851	--	**	246	950	658	1,928	**	**
TOTAL	**	12,617	18,373	26,308	3,921	12,112	41,153	30,445	53,638	17,289	**	1,019	652	20,715	10,556	4,232	2,648	1,017

Oahu FADs

<i>SPECIES</i>	<i>J</i>	<i>P</i>	<i>R</i>	<i>S</i>	<i>T</i>	<i>U</i>	<i>V</i>	<i>X</i>	<i>BO</i>	<i>CO</i>	<i>HH</i>	<i>II</i>	<i>LL</i>	<i>MM</i>
Aku	4,583	3,298	2,589	1,616	583	225	656	4,884	1,193	10,199	29,677	1,043	16,572	22,252
Bigeye	557	321	235	**	**	82	**	**	--	291	573	**	1,110	10,616
Kawakawa	--	**	**	**	**	--	37	**	**	--	**	**	**	**
Tombo	--	--	--	--	--	--	--	--	--	--	--	--	--	**
Keokeo	--	**	**	--	--	--	--	--	--	--	--	--	--	--
Yellowfin	5,786	4,098	7,151	3,328	2,084	294	2,141	5,957	5,410	27,795	10,552	3,391	17,080	21,786
Tuna (misc.)	--	--	--	--	--	--	**	--	**	--	--	--	**	**
Black marlin	--	--	--	**	--	--	--	**	**	--	--	--	--	--
Blue marlin	1,851	1,351	4,585	4,545	612	--	2,405	**	5,572	7,028	1,674	862	1,050	1,794
Sailfish	--	--	--	--	--	--	--	--	--	--	**	--	--	--
Shortbill spearfish	**	**	--	190	--	--	118	--	180	273	--	**	**	274
Striped marlin	**	**	**	**	--	--	--	--	**	**	--	**	**	**
Swordfish	--	--	--	--	--	--	--	--	--	--	--	--	**	12,410
Billfish (unclass.)	--	--	--	--	--	--	**	--	--	--	--	--	--	1,689
Kaku	**	311	--	**	--	--	**	--	37	**	**	--	**	--
Mahimahi	6,196	11,974	552	420	2,370	668	1,383	6,862	8,140	7,932	3,796	4,698	12,421	--
Ono	531	1,568	142	166	191	--	612	396	1,025	1,224	814	597	782	--
Kahala	--	--	--	--	--	--	--	--	--	**	--	--	--	--
Aha	**	--	**	--	--	--	**	--	--	--	--	--	**	--
Akule	--	--	--	--	--	--	**	--	--	--	--	--	--	--
Kamanu	**	**	--	--	--	**	--	--	**	--	--	--	15	**
Opelu	**	--	398	**	--	--	3,762	--	--	--	--	**	--	**
Uku	--	**	**	**	--	--	**	--	--	--	--	--	**	--
Kagami	--	--	--	--	--	--	--	--	--	--	--	--	**	--
White ulua	--	**	--	--	--	--	--	--	--	**	--	--	--	--
Mako	--	--	**	--	--	--	--	--	--	--	--	--	--	--
Oceanic White Tip Shark	--	--	--	--	--	--	--	--	**	--	--	--	--	--
Unclass./Misc.**	240	468	588	5,037	203	--	354	--	510	932	97	772	340	488
TOTAL	19,744	23,389	16,240	15,302	6,043	1,269	11,468	18,099	22,067	55,674	47,183	11,363	49,370	71,309

**Due to low level of fishermen reporting and to preserve confidentiality, data for these FADs by species are pooled under Misc./Unclass.

Maui, Kahoolawe, Lanai, and Molokai FADs

<i>SPECIES</i>	<i>K</i>	<i>M</i>	<i>N</i>	<i>NL</i>	<i>Q</i>	<i>CC</i>	<i>DD</i>	<i>FF</i>	<i>HO</i>	<i>HS</i>	<i>LA</i>	<i>MC</i>
Aku	264	1,234	2,183	--	12,111	--	**	1,640	7,623	**	**	1,829
Bigeye	**	572	1,144	--	753	--	--	36,176	544	**	--	2,639
Kawakawa	**	--	**	--	--	--	**	**	--	--	--	--
Keokeo	--	--	--	--	--	--	--	**	--	--	--	--
Tombo	--	--	--	--	--	--	--	--	--	--	--	--
Yellowfin	1,518	11,786	3,803	**	15,845	**	**	26,566	14,626	**	**	4,939
Tuna (misc.)	--	**	--	--	**	--	**	--	--	**	--	--
Black marlin	--	--	--	--	--	--	--	--	--	--	--	--
Blue marlin	783	**	--	--	1,859	--	--	**	**	--	**	**
Sailfish	--	--	--	--	**	--	--	--	--	--	--	--
Shortbill spearfish	**	**	**	--	**	--	--	--	**	--	--	--
Striped marlin	--	--	--	--	--	--	--	--	--	--	--	--
Swordfish	--	--	--	--	--	--	--	--	--	--	--	--
Billfish (unclass.)	--	--	--	--	--	--	--	--	--	--	--	--
Kaku	**	--	**	--	--	**	--	--	--	--	--	--
Mahimahi	1,094	8,906	9,491	778	18,721	--	3,047	14,294	22,546	1,432	781	12,373
Ono	299	1,212	866	--	2,612	**	868	416	2,661	244	219	120
Uku	**	**	--	--	--	--	--	--	--	--	**	**
Omilu	--	--	--	--	--	--	--	--	--	--	--	**
Akule	**	--	--	--	--	--	--	--	--	--	--	--
Opelu	--	--	--	--	**	--	--	--	--	--	--	--
Kamanu	--	--	36	--	34	--	--	113	**	**	--	--
White ulua	**	--	--	--	--	--	--	--	--	--	--	--
Unclass./Misc.**	286	2,514	--	--	1,150	--	148	920	599	542	1,073	**
TOTAL	4,244	26,224	17,523	778	53,085	**	4,063	80,125	48,599	2,218	2,073	21,900

Kauai FADs

<i>SPECIES</i>	<i>Z</i>	<i>AA</i>	<i>BB</i>	<i>CK</i>	<i>DK</i>	<i>EK</i>	<i>KK</i>	<i>PP</i>
Aku	370	456	612	739	1,109	215	**	937
Bigeye	**	**	1,690	**	--	**	--	229
Kawakawa	--	**	--	--	--	**	--	--
Tombo	--	1,217	--	**	--	**	--	1,735
Yellowfin	7,108	9,900	11,208	10,084	23,760	2,234	4,439	29,718
Tuna (misc.)	--	--	**	--	--	--	--	--
Black marlin	--	--	--	--	--	--	--	--
Blue marlin	853	**	--	**	**	**	--	**
Shortbill spearfish	--	--	--	--	--	**	**	172
Striped marlin	**	--	--	**	--	--	--	**
Swordfish	--	**	--	**	--	--	--	--
Billfish (misc.)	--	--	--	--	--	--	--	--
Kaku	**	--	--	--	--	--	--	--
Mahimahi	364	1,321	1,697	281	2,320	2,107	350	881
Ono	400	678	347	99	259	648	415	**
Walu	--	--	--	--	--	--	--	**
Kahala	--	--	**	--	--	--	--	--
Uku	--	--	--	**	--	--	--	--
Akule	**	--	**	--	--	--	--	--
Opelu	--	--	--	--	--	--	**	--
Kamanu	--	--	--	--	--	--	--	--
White papio	--	--	--	--	--	--	--	--
Ulua (misc.)	--	--	--	--	--	--	--	--
Thresher Shark	--	--	--	**	--	--	--	--
Squid	--	--	**	--	--	--	--	**
Unclass./Misc.**	276	1,466	147	613	--	1,149	660	712
TOTAL	9,371	15,038	15,701	11,816	27,448	6,353	5,864	34,384

**Due to low level of fishermen reporting and to preserve confidentiality, data for these FADs by species are pooled under Misc./Unclass.

Other FADs

SPECIES	MO	W2	W3	W4	W8
Aku	1,095	**	214		
Bigeeye	1,089	29,679	28,085	**	**
Kawakawa	**				
Tombo			**		
Yellowfin	1,955	**	15,115	**	**
Tuna (misc)	--				
Blue marlin	--	**	**		
Shortbill spearfish		**	**		
Kaku	**		**		
Mahimahi	1,416	1,736	10,025	**	**
Ono	184	**	520		
Monchong				**	
Kamanu	**	**			
Unclass./Misc.**	**		441		
TOTAL	5,739	31,415	54,400	**	1,787

**Due to low level of fishermen reporting and to preserve confidentiality, data for these FADs by species are pooled under Misc./Unclass.

Appendix F - FAD Catches by Island, FAD and Fishing Trip Count

Island	FAD	Location	# Mon. on Station	Fishing Method											
				Trolling			Tuna Handline			Aku boat			Other		
				Lbs.	# Trips	Lbs./ Trip	Lbs.	# Trips	Lbs./ Trip	Lbs.	# Trips	Lbs./ Trip	Lbs.	# Trips	Lbs./ Trip
Hawaii	A	South Pt.	12.0	**											
	B	Miloli'i	12.0	9,593	115	83.4	2,386	26	91.8				1085	10	108.5
	C	Loa Pt.	12.0	10,230	207	49.4	7,446	95	78.4				833	22	37.9
	D	Kumukahi	8.8	11,618	78	148.9	13,872	39	355.7				1,123	12	93.6
	E	Leleiwi	7.4	2,746	41	67.0	**						933	3	311.0
	F	Kailua-Kona	8.0	5,919	115	51.5	6,223	48	129.6				234	10	23.4
	G	Pepe'ekeo	8.2	23,999	237	101.3	13,139	82	160.2				4,015	20	200.8
	HK	Hakalau	7.2	19,055	129	147.7	9,281	22	421.9				2,109	14	150.6
	KH	Kahena	9.2	19,525	103	189.6	34,268	108	317.3				**		
	OT	Waikoloa Pt.	12.0	17,117	138	124.0	**						148	3	49.3
	QQ	Makuu	3.1	47	6	7.8									
	RN	Palima Pt.	12.0	1,065	13	81.9	**								
	SS	Apua Pt.	12.0	652	8	81.5	**						**		
	TT	Kanewa'a	12.0	8,422	97	86.8	11,614	62	187.3				933	16	58.3
	UU	Auau	12.0	7,867	106	74.2	1,840	26	70.8				849	10	84.9
	VV	Kahalu'u	12.0	1,684	86	19.6	722	8	90.3				1,844	27	68.3
	XX	Puako	8.3	2,833	41	69.1									
ZZ	Waima Pt.	9.3	1,056	25	42.2										
Oahu	J	Waiale'e	12.0	19,380	142	136.5							**		
	P	Penguin Banks	12.0	19,150	159	120.4	**			**			**		
	R	Makaha	8.4	13,974	99	141.2	1,846	14	131.9				420	8	52.5
	S	Pokai Bay	8.8	9,838	118	83.4	**						4,615	24	192.3
	T	Makapu'u	10.4	5,561	68	81.8	482	6	80.3						
	U	Kane'ohe	5.5	1,104	39	28.3	**						**		
	V	Makua	12.0	7,724	137	56.4							3,791	52	72.9
	X	Kahuku	8.5	17,821	126	141.4	**								
	BO	Barbers Pt.	12.0	22,044	326	67.6							**		
	CO	Ka'ena Pt.	12.0	47,809	370	129.2	2,818	12	234.8		**		3,096	16	193.5
	HH	Pearl Harbor	7.6	14,640	212	69.1	3,155	11	286.8		**		148	4	37.0
	II	Hale'iwa	9.8	11,309	85	133.0							**		
	LL	Hau'ula	12.0	31,369	283	110.8	1,675	11	152.3		**		360	4	90.0
MM	Mokapu Pt.	12.0	39,217	398	98.5	10,568	50	211.4		**		1,369	20	68.5	

***Due to low level of fishermen reporting and to preserve confidentiality, data for these FADs by fishing methods are not listed.

Island	FAD	Location	# Mon. on Station	Fishing Method											
				Trolling			Tuna Handline			Aku boat			Other		
				Lbs.	# Trips	Lbs./ Trip	Lbs.	# Trips	Lbs./ Trip	Lbs.	# Trips	Lbs./ Trip	Lbs.	# Trips	Lbs./ Trip
Maui County	K	Palaoa	12.0	4,226	307	13.8								**	
	M	Hana Bay	8.9	26,000	132	197.0		**							
	N	Cape Halawa	7.0	17,353	94	184.6		**							
	Q	Pauwela Pt.	12.0	51,542	359	143.6	1,243	13	95.6					**	
	CC	Ka'ena Pt.	8.3	67	4	16.8								**	
	DD	Opana Pt.	7.6	4,063	91	44.6		**							
	FF	Pukaulua Pt.	7.7	76,414	177	431.7	3,695	9	410.6					**	
	GG	Nakaohu Pt.	6.1	866	23	37.7									
	HO	Ho'olawa Pt.	11.3	48,268	317	152.3		**							
	HS	Halona	12.0	2,181	73	29.9								**	
	JJ	Kamohio	12.0	15,552	107	145.3		**						**	
	LA	Lahaina	8.6	2,073	65	31.9								**	
	MC	Palaoa	11.5	22,671	318	71.3		**						**	
	Kauai	NL	Nu'u	4.3	818	10	81.8								
SO		Kahoolawe	11.3	1,856	47	39.5									
Z		Kipukai	8.2	7,478	106	70.5	1,878	14	134.1					**	
AA		Port Allen	12.0	10,225	110	93.0	4,813	19	253.3						
BB		Moloa'a	12.0	9,107	95	95.9	6,276	24	261.5					**	
CK		Makahu'ena Pt.	7.0	6,569	86	76.4	5,247	28	187.4						
DK		Anahola	12.0	14,597	158	92.4	13,229	54	245.0						
EK		Hanalei	12.0	6,353	98	64.8									
KK		Waimea	6.5	5,112	39	131.1		**						**	
PP		Koloa	8.4	13,722	132	104.0	20,662	88	234.8						