

Division of Aquatic Resources
 Dept. of Land & Natural Resources
 1151 Punchbowl Street Room 330
 Honolulu, Hawaii 96813

Volume 16
 November 2013

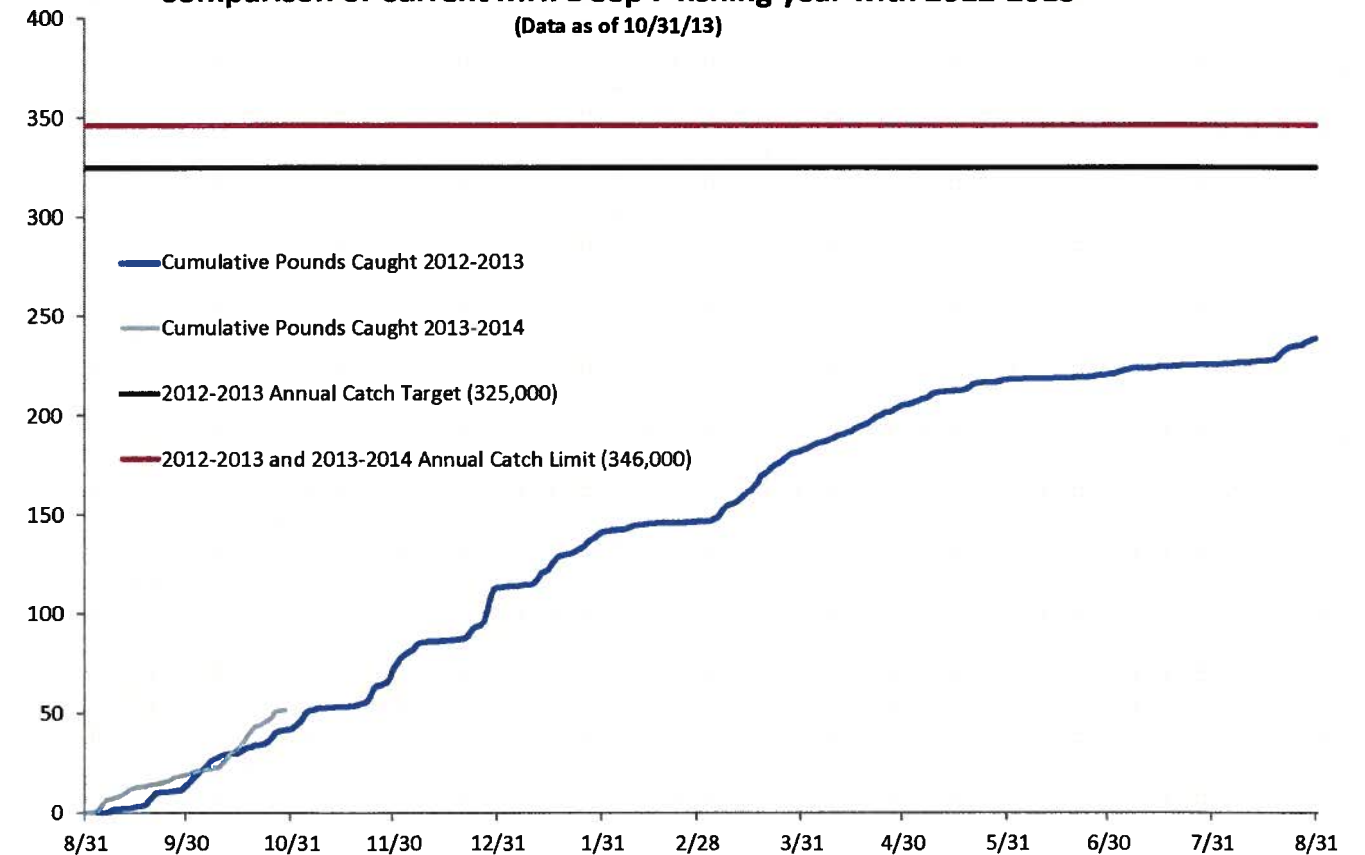
BOTTOMFISH NEWS



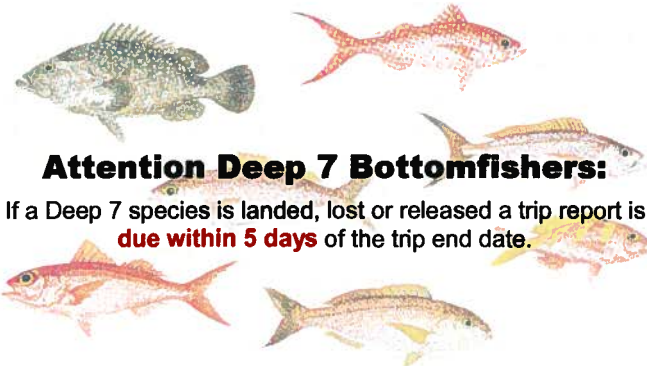
Comparison between the 2012-2013 and 2013-2014 Bottomfish Fishing Years

Comparison of Current MHI Deep 7 fishing year with 2012-2013

(Data as of 10/31/13)



In an effort to improve outreach regarding the Deep 7 trip report requirement and compliance with the trip report requirement, reminder cards were made to be distributed at all DAR offices.



- Bottomfish trip reports are due within 5 days of trip end.
- Late trip reports are subject to a fine.
- Reports can be entered online: dlnr.ehawaii.gov/cmls or using a paper form, please call (808) 587-0109 for a trip report book or visit your local DAR office.

Attention Deep 7 Bottomfishers:

If a Deep 7 species is landed, lost or released a trip report is **due within 5 days** of the trip end date.



Dear Commercial Bottomfish fishers and dealers-Please let us know what kind of information is useful to you. We welcome your feedback! Any feedback about the newsletter, positive or negative, is greatly appreciated! PLEASE CALL statistical staff member, Jessica Miller, (808) 587-0594 or e-mail dlnr.ar.bf@hawaii.gov. Mahalo! - DAR Statistical Unit

Thank you to everyone for your ideas and assistance in editing the Bottomfish Newsletter Volume 16! A special thanks to: Reginald Kokubun, Eric Yokomori, and Dieter Stelling.
 Editor: Jessica Miller

During the 2012-2013 Main Hawaiian Islands (MHI) Deep 7 bottomfish fishing year, (as of October 31, 2013), 457 fishers reported 2,980 Deep 7 trips and landing 68,361 pieces, and 238,705 pounds of Deep 7 bottomfish. This is 73.4% of the Annual Catch Target (ACT) and 69.0% of the Annual Catch Limit (ACL). An ACT and an ACL were used to manage the MHI Deep 7 bottomfish during the 2011-2012 and the 2012-2013 fishing years. In June 2013, the Western Pacific Regional Fisheries Management Council recommended to manage the 2013-2014 fishing year with an annual catch limit (ACL) of 346,000 pounds, the same as the past two years. This ACL was posted in the Federal Register by NOAA Fisheries in September 2013. An ACT was used to manage the fishery the last two years but is no longer necessary. The ACT was a buffer to prevent exceeding the ACL and was used because there was management uncertainty. The uncertainty has been eliminated due to the trip report requirement and the high compliance rate. This time last year (on November 2, 2012) 190 fishers reported 484 trips, 11,107 pieces, and 38,623 pounds of Deep 7 bottomfish, 11.9% of the ACT and 11.2% of the ACL. The 2013-2014 fishing year began September 1, 2013. As of October 31, 2013, 188 fishers have reported landing 15,048 pieces and 51,740 pounds in 569 trips which is 15.0% of the ACL. The 2013-2014 fishing year is slightly ahead of last year's pace. Weekly updates can be found on <http://www.wpcouncil.org/fishermen-resources-2/> or http://www.fpir.noaa.gov/SFD/SFD_regs_3.html#Hawaii

Fishing Report Reminders

Hours Fished:

There has been some confusion about the field "Hours Fished" which is found on the majority of DAR fishing report forms including the monthly Fishing Report and the MHI "Deep 7" Bottomfish Fishing Trip Report. The directions for completing the field "Hours Fished Per Method/Area" in the fishing report books is "Enter number of hours fished (fishing gear soak time)." The field is for the number of hours spent actively fishing, the number of hours the gear is in the water. Please do not include the time it took to reach the fishing spot or the time it took to find an area where fish are biting. NOAA scientists use the number of hours with the gear in the water to calculate effort for stock assessments.

Example 1: It takes a fisherman 2 hours round-trip to get to his fishing area and back. Once he gets to the area, he bottomfishes for 5 hours.

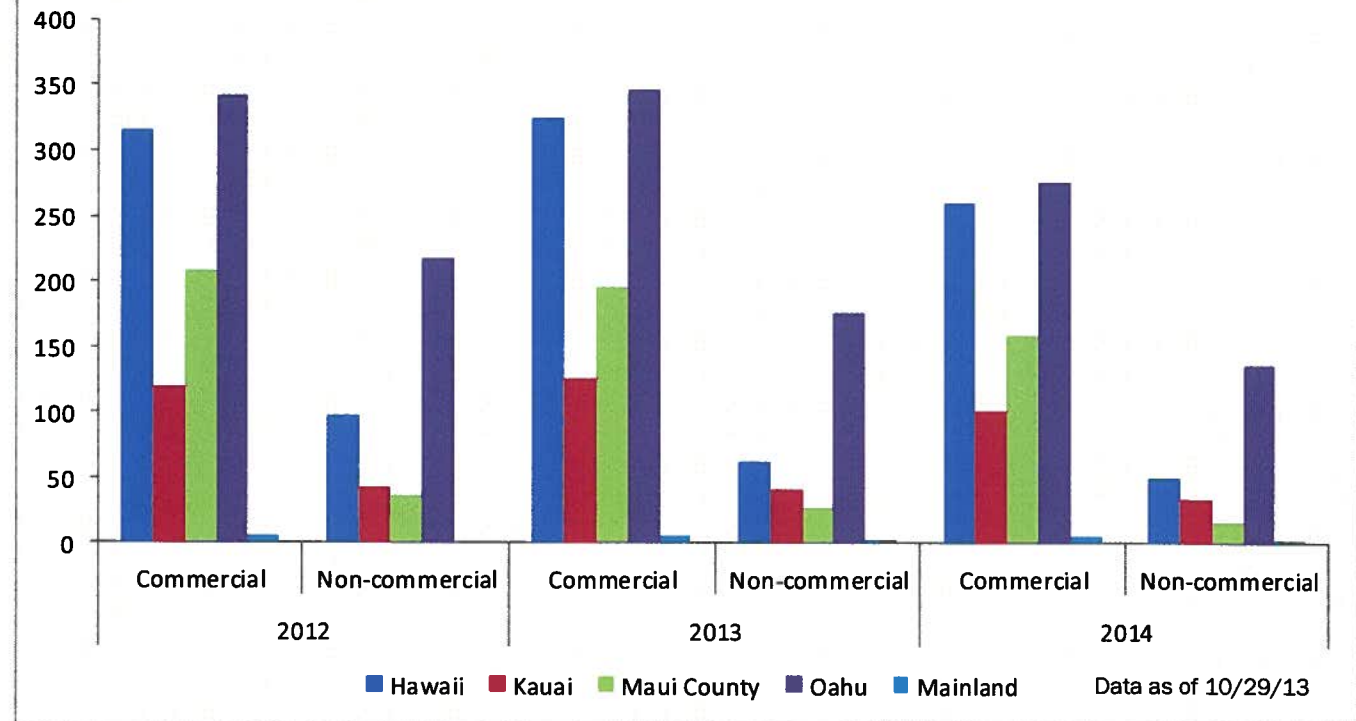
Day Fished	Buoy or Area Fished	Fishing Method (See Methods List)	FISHING EFFORT			Port of Landing	SPECIES Species Name (See Species List)	CATCH		LOST & RELEASED	
			Hours Fished per Method/Area	Number of Lines or Loop Nets	No Catch "X"			Number Landed	Lbs. Landed (est.)	Number Lost to Predation	Number Released
12	331	BF	5	2		Kewalo Basin	Opakapaka	19	76		
							White Ulua	1	14		
CORRECT: Only the number of hours with gear in the water should be in the "Hours Fished" column.											
12	331	BF	7	2		Kewalo Basin	Opakapaka	19	76		
							White Ulua	1	14		
INCORRECT: Do NOT include your transit time in the "Hours Fished" column.											

Example 2: It takes a fisherman 2 hours round-trip to get to his fishing area and back, he trolls with lures for 1 hour out to his fishing area. Once he gets to the area, he spends 2 hours searching for fish then actively bottomfishes for 8 hours. He then trolls with lures for 1 hour back to port.

Day Fished	Buoy or Area Fished	Fishing Method (See Methods List)	FISHING EFFORT			Port of Landing	SPECIES Species Name (See Species List)	CATCH		LOST & RELEASED	
			Hours Fished per Method/Area	Number of Lines or Loop Nets	No Catch "X"			Number Landed	Lbs. Landed (est.)	Number Lost to Predation	Number Released
13	400	TL	2	3	X	Kewalo Basin					
	331	BF	8	2			Opakapaka	19	80		
CORRECT: Only the number of hours with gear in the water should be in the "Hours Fished" column.											
13	400	TL	2	3	X	Kewalo Basin					
	331	BF	10	2			Opakapaka	19	80		
INCORRECT: Do NOT include the time spent to find the fish in the "Hours Fished" column.											

Deep 7 Bottomfish Vessel Registration

Comparison of Commercial and Non-Commercial Bottomfish Vessel Registrants by Island and Year



This is the third year that fishers have been required to register their vessels annually with the Bottomfish Vessel Registration if they plan to catch any of the Deep 7 species regardless if they are commercial or non-commercial. Fishing years begin September 1 and end August 31 or when the fishery reaches that Annual Catch Limit (ACL) each year. The bottomfish vessel registration card is free and expires on August 31 or when the ACL is met. During the 2011-2012 fishing year, 1,311 vessels were registered, 1000 were commercial and 311 were non-commercial, however only 457 commercial fishers reported landing Deep 7 bottomfish.

Comparison of Commercial and Non-Commercial Bottomfish Vessel Registrants by Year

