

COMMERCIAL MARINE LANDINGS SUMMARY TREND REPORT

CALENDAR YEAR 2017



**DIVISION OF AQUATIC RESOURCES
DEPARTMENT OF LAND AND NATURAL RESOURCES
STATE OF HAWAII**

TABLE OF CONTENTS

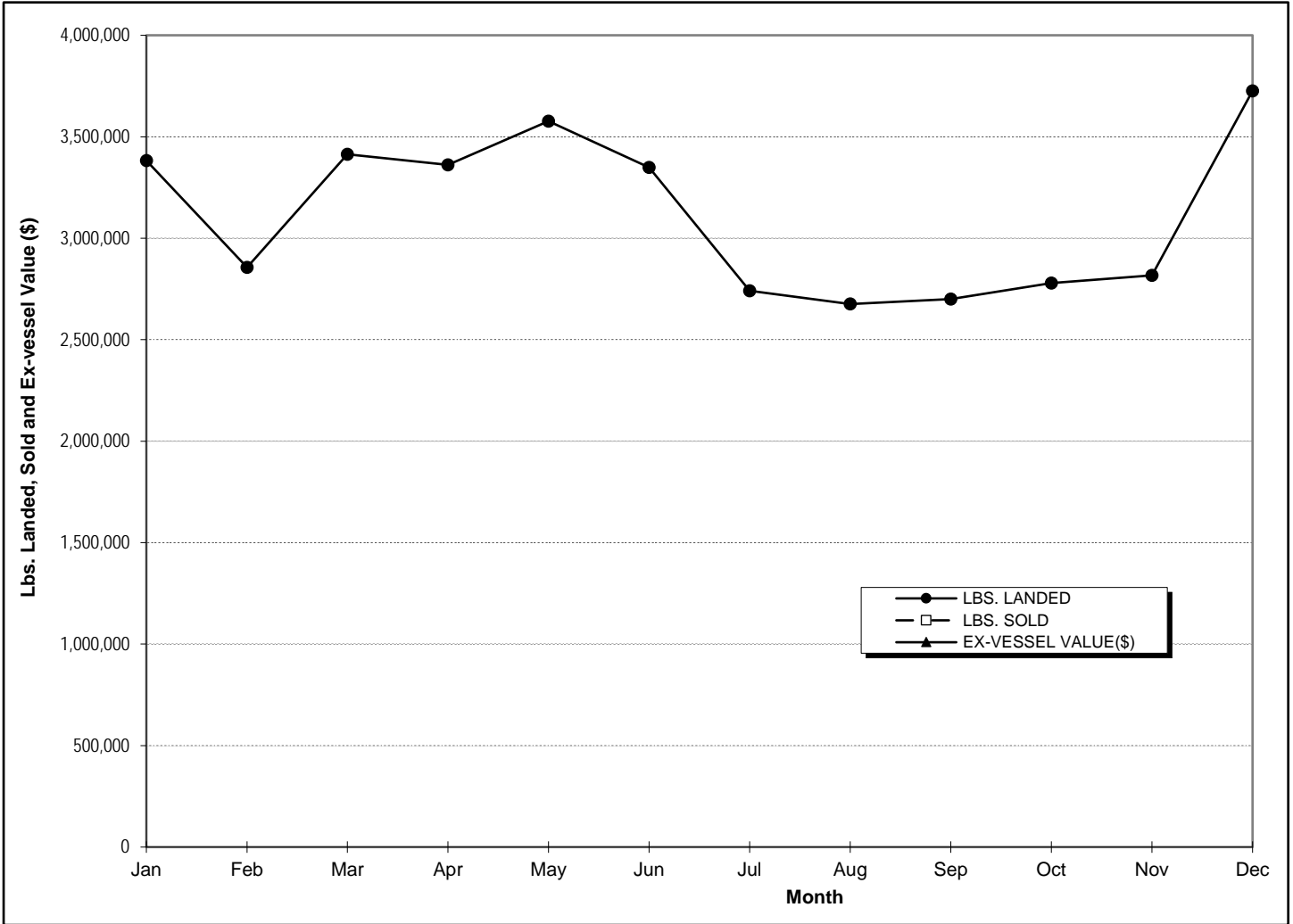
	Page No.
I. INTRODUCTION	1
II. CHARTS	
A. TOTAL SEA LANDINGS	
1. Annual Monthly Trends	2
2. Annual 5-year Trends	3
B. SEA LANDINGS BY SPECIES GROUPS	
1. Annual Monthly Trends	4
2. Annual 5-year Trends	5
C. SEA LANDINGS BY FISHING METHOD	
1. Annual Monthly Trends	6
2. Annual 5-year Trends	7
D. SEA LANDINGS BY PORT	
1. Annual Monthly Trends	8
2. Annual 5-year Trends	9
II. APPENDICES	
A. Sea Landings by Species	10
B. Sea Landings by Fishing Method	12
C. Sea Landings by Island	12
D. Sea Landings by Area Fished	12
E. FAD Catches by Island and Species	13
F. FAD Catches by Island, FAD and Fishing Trip Count	15

Note: Data incomplete due to late submission and processing of fish catch records.

INTRODUCTION

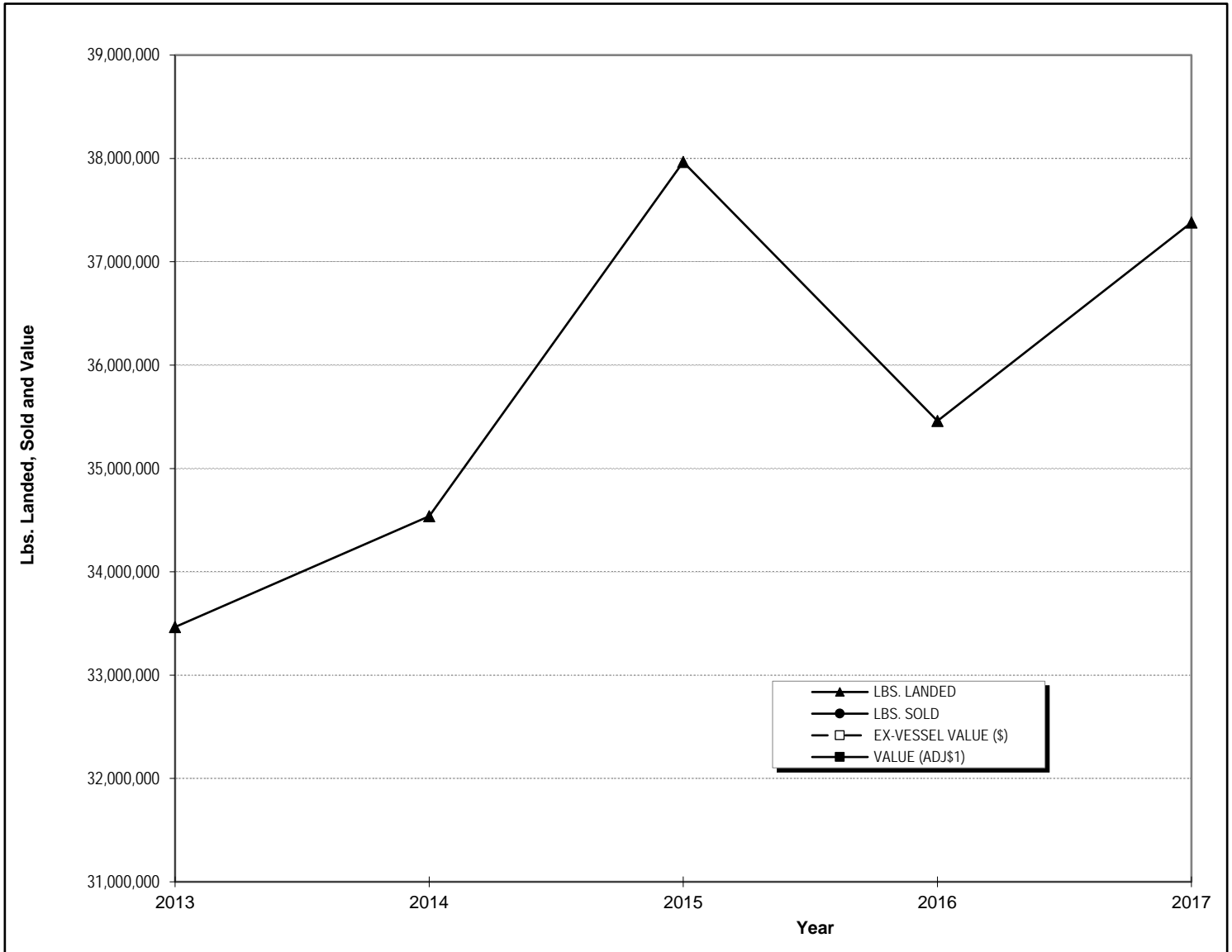
The information presented in this Commercial Marine Landing Summary Trend Report is compiled from fishing reports submitted by licensed fishermen. Commercial fishers are required to obtain commercial marine licenses and submit fishing reports to DLNR-DAR. In previous editions of these summary trend reports, including 1997 through 2001, only ex-vessel landing data (pounds sold and value of pounds sold) were reported. On October 2002, DLNR-DAR implemented new and revised commercial fishing report forms to improve the collection of fishing effort and total catch data. Since then commercial fishers no longer report ex-vessel landings on their fishing reports. The ex-vessel landing data are collected from commercial fish dealers. DLNR-DAR is in the process of integrating fishing effort and catch data from fishing report reports with ex-vessel landing data from commercial marine dealer reports. Until this process is completed, ex-vessel landing information by fisheries will not be available. Therefore, this commercial marine landings summary trend report only contains catch data or pounds landed. When the data integration process is completed, this summary trend report will be revised and the catch data will be replaced with ex-vessel value landing data.

**CHART A.1
TOTAL SEA LANDINGS ANNUAL MONTHLY TRENDS, 2017**



MONTH	LBS. LANDED	LBS. SOLD	EX-VESSEL VALUE(\$)
<i>Jan</i>	3,383,297		
<i>Feb</i>	2,856,584		
<i>Mar</i>	3,413,039		
<i>Apr</i>	3,361,156		
<i>May</i>	3,576,410		
<i>Jun</i>	3,348,469		
<i>Jul</i>	2,741,187		
<i>Aug</i>	2,675,625		
<i>Sep</i>	2,700,675		
<i>Oct</i>	2,779,159		
<i>Nov</i>	2,817,012		
<i>Dec</i>	3,726,216		
TOTAL	37,378,829		

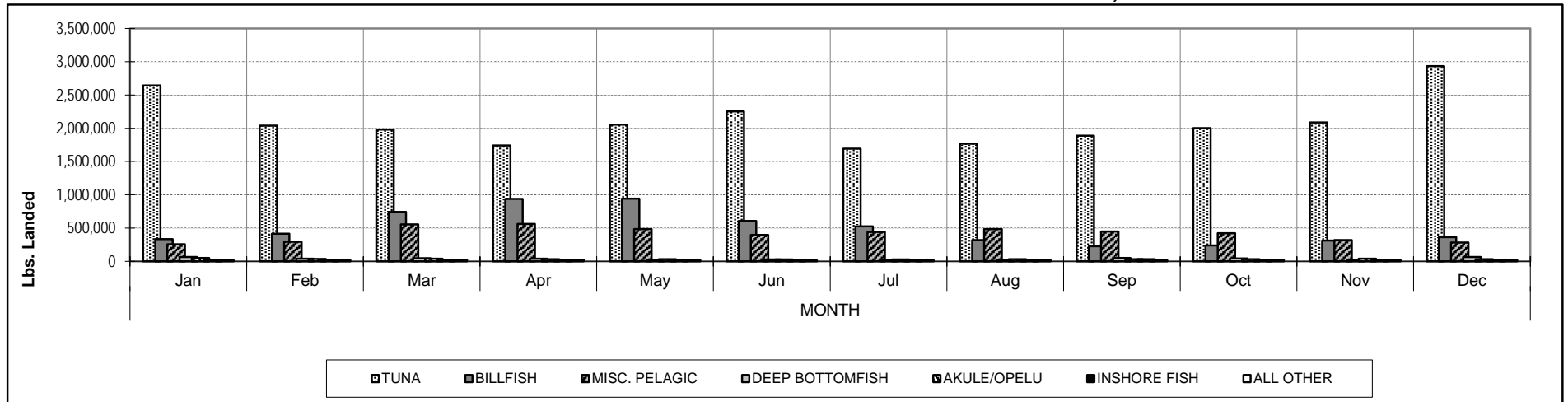
**CHART A.2
TOTAL SEA LANDINGS ANNUAL 5 - YEAR TRENDS, 2013- 2017**



YEAR	LBS. LANDED	LBS. SOLD	EX-VESSEL VALUE (\$)	HCPI¹	VALUE (ADJ\$¹)
2013	33,465,732				
2014	34,537,127				
2015	37,965,606				
2016	35,458,584				
2017	37,378,829				

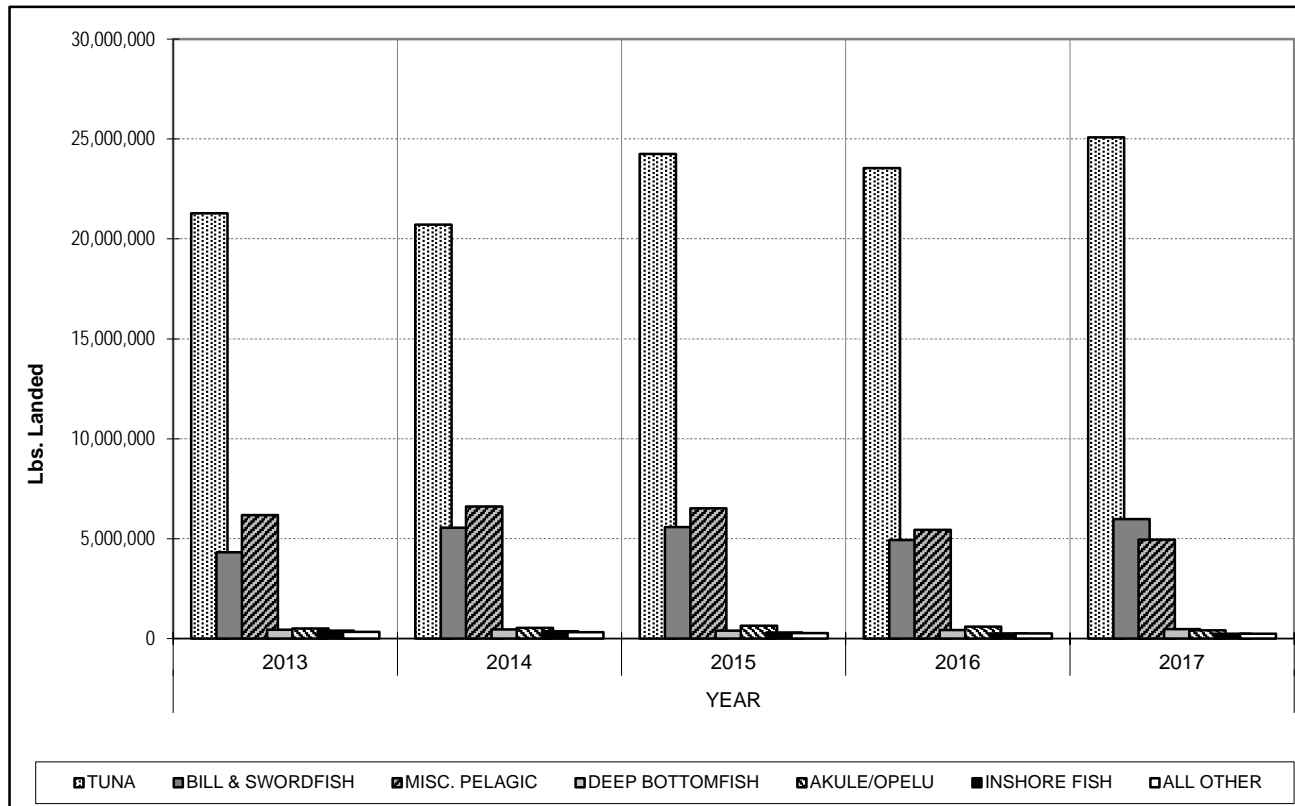
¹ Honolulu Consumer Price Index (all wage earners)

**CHART B.1
SEA LANDINGS BY SPECIES GROUP ANNUAL MONTHLY TRENDS, 2017**



Calendar Year 2017		MONTH												YEAR
SPECIES GROUP		Jan	Feb	Mar	Apr	May	Jun	Jul	Aug	Sep	Oct	Nov	Dec	TOTAL
TUNA	Lbs. Landed	2,642,058	2,038,129	1,979,006	1,742,890	2,053,739	2,254,647	1,694,513	1,767,498	1,889,133	2,003,285	2,088,245	2,935,020	25,088,163
	Lbs. Sold													
	Ex-vessel Value (\$)													
BILLFISH	Lbs. Landed	335,788	415,555	743,674	939,431	942,603	607,789	525,362	320,776	227,503	237,749	312,533	365,035	5,973,798
	Lbs. Sold													
	Ex-vessel Value(\$)													
MISC. PELAGIC	Lbs. Landed	257,485	292,770	554,579	562,214	485,388	395,379	440,605	485,412	449,638	422,529	318,183	282,282	4,946,465
	Lbs. Sold													
	Ex-vessel Value(\$)													
DEEP BOTTOMFISH	Lbs. Landed	63,755	40,870	46,489	41,169	25,842	27,274	20,253	26,050	50,532	44,623	22,412	66,765	476,032
	Lbs. Sold													
	Ex-vessel Value (\$)													
AKULE/OPELU	Lbs. Landed	48,974	35,716	39,789	30,625	31,092	27,734	27,041	32,476	33,394	31,373	40,681	33,955	412,851
	Lbs. Sold													
	Ex-vessel Value (\$)													
INSHORE FISH	Lbs. Landed	16,212	15,533	25,917	19,525	19,316	21,052	17,009	22,850	31,916	19,785	14,799	21,630	245,543
	Lbs. Sold													
	Ex-vessel Value (\$)													
ALL OTHER	Lbs. Landed	19,026	18,012	23,584	25,302	18,430	14,594	16,406	20,563	18,560	19,815	20,159	21,528	235,978
	Lbs. Sold													
	Ex-vessel Value (\$)													
TOTAL	Lbs. Landed	3,383,297	2,856,584	3,413,039	3,361,156	3,576,410	3,348,469	2,741,187	2,675,625	2,700,675	2,779,159	2,817,012	3,726,216	37,378,829
	Lbs. Sold													
	Ex-vessel Value (\$)													

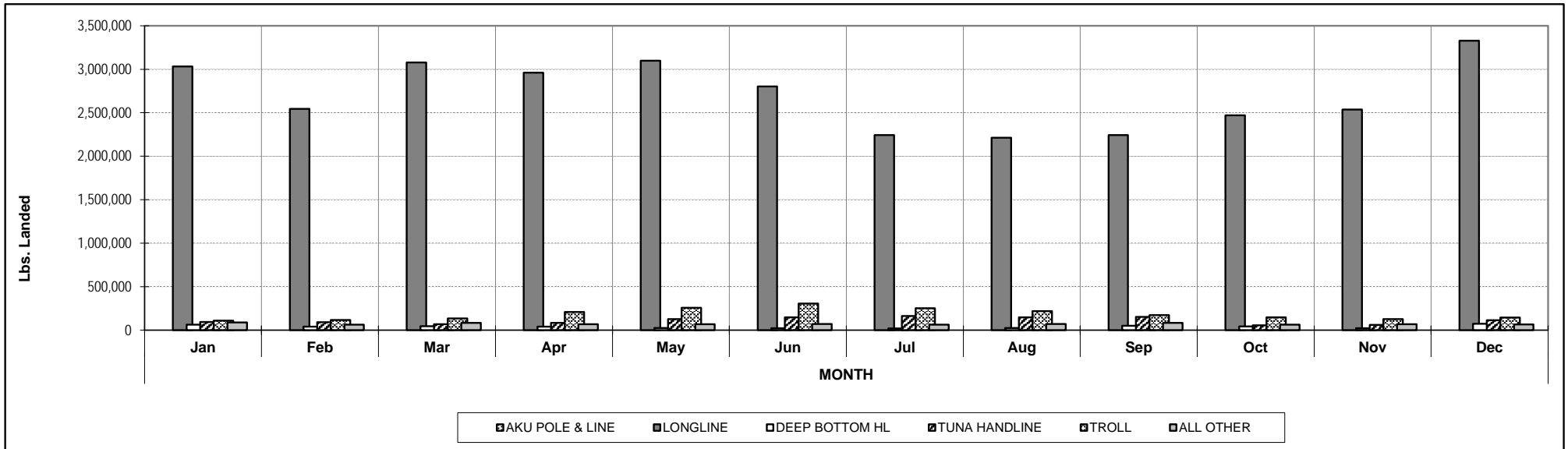
**CHART B.2
SEA LANDINGS BY SPECIES GROUPS ANNUAL 5 - YEAR TRENDS, 2013 - 2017**



<i>Calendar Year</i>		<i>YEAR</i>				
SPECIES GROUP		2013	2014	2015	2016	2017
TUNA	<i>Lbs. Landed</i>	21,277,614	20,708,112	24,250,578	23,538,751	25,088,163
	<i>Lbs. Sold</i>					
	<i>Value (Adj\$)¹</i>					
BILL & SWORDFISH	<i>Lbs. Landed</i>	4,312,782	5,547,146	5,579,796	4,935,545	5,973,798
	<i>Lbs. Sold</i>					
	<i>Value (Adj\$)¹</i>					
MISC. PELAGIC	<i>Lbs. Landed</i>	6,181,227	6,605,328	6,520,466	5,446,791	4,946,465
	<i>Lbs. Sold</i>					
	<i>Value (Adj\$)¹</i>					
DEEP BOTTOMFISH	<i>Lbs. Landed</i>	448,139	454,659	397,664	426,192	476,032
	<i>Lbs. Sold</i>					
	<i>Value (Adj\$)¹</i>					
AKULE/OPELU	<i>Lbs. Landed</i>	511,225	529,710	635,743	597,625	412,851
	<i>Lbs. Sold</i>					
	<i>Value (Adj\$)¹</i>					
INSHORE FISH	<i>Lbs. Landed</i>	396,251	371,479	303,320	256,712	245,543
	<i>Lbs. Sold</i>					
	<i>Value (Adj\$)¹</i>					
ALL OTHER	<i>Lbs. Landed</i>	338,493	320,693	278,038	256,967	235,978
	<i>Lbs. Sold</i>					
	<i>Value (Adj\$)¹</i>					
TOTAL	<i>Lbs. Landed</i>	33,465,732	34,537,127	37,965,606	35,458,584	37,378,829
	<i>Lbs. Sold</i>					
	<i>Value (Adj\$)¹</i>					

¹ Honolulu Consumer Price Index (all wage earners)

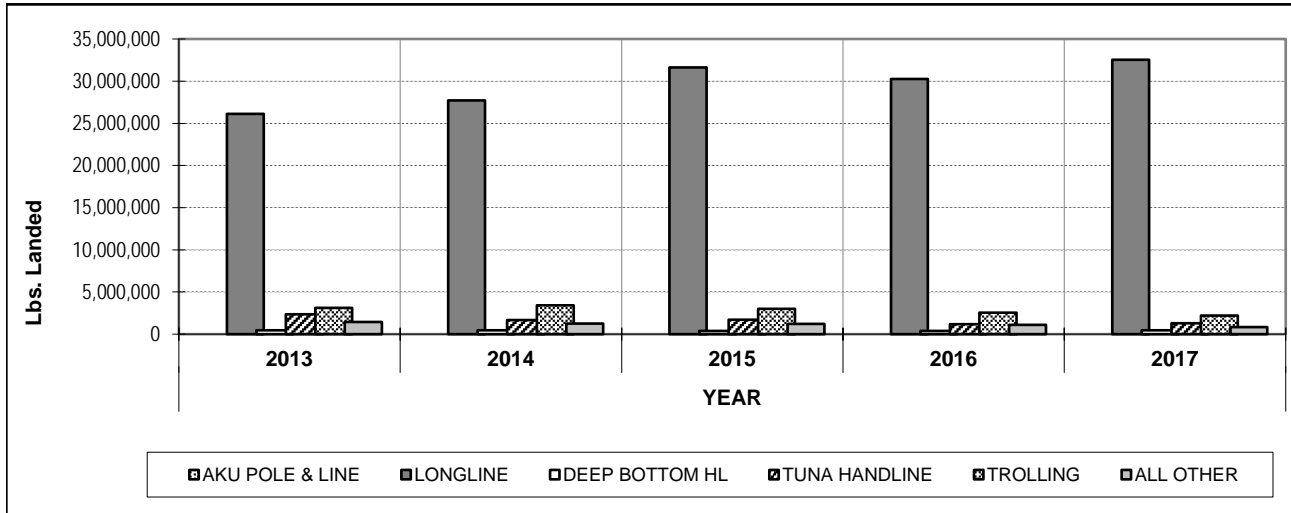
**CHART C.1
SEA LANDINGS BY FISHING METHOD ANNUAL MONTHLY TRENDS, 2017**



Calendar Year 2017		MONTH												YEAR TOTAL
METHOD		Jan	Feb	Mar	Apr	May	Jun	Jul	Aug	Sep	Oct	Nov	Dec	
AKU POLE & LINE	Lbs. Landed Lbs. Sold Ex-vessel Value (\$)													
LONGLINE	Lbs. Landed Lbs. Sold Ex-vessel Value (\$)	3,031,546	2,544,302	3,079,010	2,961,465	3,098,044	2,803,328	2,242,357	2,213,213	2,242,528	2,469,538	2,537,166	3,329,156	32,551,651
DEEP BOTTOM HL	Lbs. Landed Lbs. Sold Ex-vessel Value (\$)	62,021	41,190	45,969	40,701	25,323	22,484	20,978	24,618	49,811	43,519	23,175	72,389	472,177
TUNA HANDLINE	Lbs. Landed Lbs. Sold Ex-vessel Value (\$)	93,131	90,443	69,463	82,474	127,261	147,502	162,454	147,106	152,612	54,424	61,265	113,984	1,302,119
TROLL	Lbs. Landed Lbs. Sold Ex-vessel Value (\$)	109,150	116,377	135,577	208,572	258,090	305,575	252,705	219,742	172,125	147,370	126,095	145,249	2,196,628
ALL OTHER	Lbs. Landed Lbs. Sold Ex-vessel Value (\$)	87,448	64,273	83,020	67,944	67,692	69,579	62,695	70,946	83,600	64,309	69,312	65,438	856,254
TOTAL	Lbs. Landed Lbs. Sold Ex-vessel Value (\$)	3,383,297	2,856,584	3,413,039	3,361,156	3,576,410	3,348,469	2,741,187	2,675,625	2,700,675	2,779,159	2,817,012	3,726,216	37,378,829

Due to low level of fishermen reporting and to preserve confidentiality, data for these methods are not listed.

**CHART C.2
SEA LANDINGS FISHING METHOD ANNUAL 5 - YEAR TRENDS, 2013 - 2017**

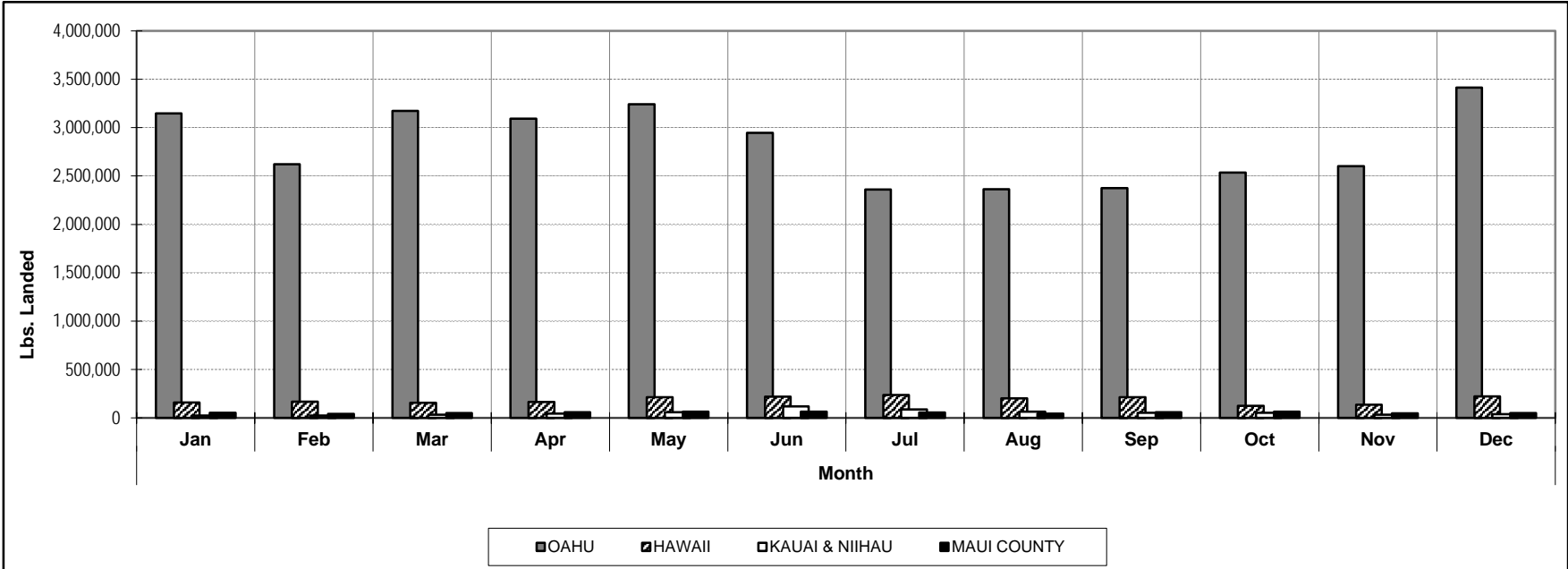


Calendar Year		YEAR				
FISHING METHOD		2013	2014	2015	2016	2017
AKU POLE & LINE	Lbs. Landed Lbs. Sold Value (Adj\$) ¹					
LONGLINE	Lbs. Landed Lbs. Sold Value (Adj\$) ¹	26,118,769	27,733,747	31,612,197	30,261,327	32,551,651
DEEP BOTTOM HL	Lbs. Landed Lbs. Sold Value (Adj\$) ¹	451,419	462,037	396,802	401,774	472,177
TUNA HANDLINE	Lbs. Landed Lbs. Sold Value (Adj\$) ¹	2,343,255	1,659,590	1,708,763	1,166,568	1,302,119
TROLLING	Lbs. Landed Lbs. Sold Value (Adj\$) ¹	3,117,880	3,416,304	3,015,034	2,540,086	2,196,628
ALL OTHER	Lbs. Landed Lbs. Sold Value (Adj\$) ¹	1,434,409	1,265,450	1,232,808	1,088,829	856,254
TOTAL	Lbs. Landed Lbs. Sold Value (Adj\$) ¹	33,465,732	34,537,127	37,965,606	35,458,584	37,378,829

¹ Honolulu Consumer Price Index (all wage earners)

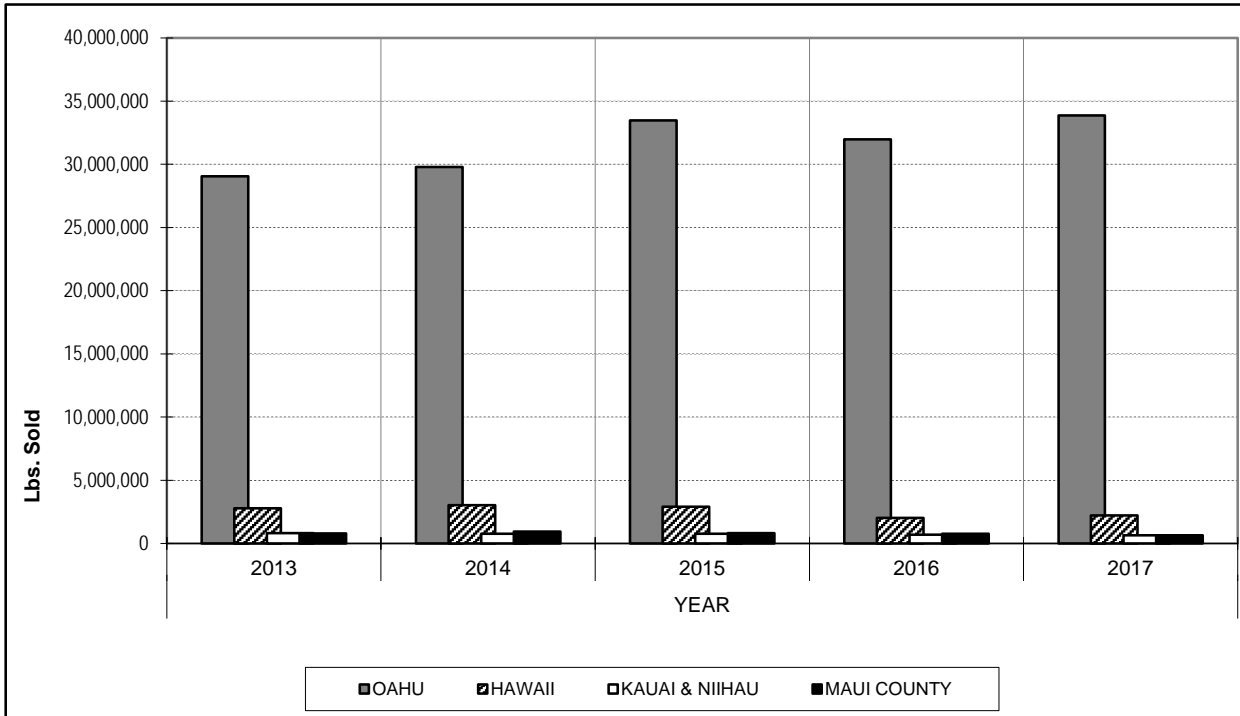
Due to low level of fishermen reporting and to preserve confidentiality, data for these methods are not listed.

**CHART D.1
SEA LANDINGS BY PORT ANNUAL MONTHLY TRENDS, 2017**



Calendar Year 2017		Month												TOTAL
PORT		Jan	Feb	Mar	Apr	May	Jun	Jul	Aug	Sep	Oct	Nov	Dec	
OAHU	Lbs. Landed	3,145,701	2,621,552	3,173,492	3,093,107	3,241,617	2,946,098	2,361,598	2,362,686	2,373,557	2,536,966	2,601,412	3,412,949	33,870,735
	Lbs. Sold													
	Ex-vessel Value (\$)													
HAWAII	Lbs. Landed	158,856	168,626	157,483	163,999	212,402	220,070	236,118	202,808	213,575	124,715	136,849	223,472	2,218,973
	Lbs. Sold													
	Ex-vessel Value (\$)													
KAUAI & NIIHAU	Lbs. Landed	25,544	24,023	31,847	44,282	58,790	119,345	87,564	64,787	53,705	54,264	32,644	38,568	635,363
	Lbs. Sold													
	Ex-vessel Value (\$)													
MAUI COUNTY	Lbs. Landed	53,195	42,383	50,217	59,769	63,602	62,955	55,907	45,344	59,838	63,215	46,108	51,226	653,759
	Lbs. Sold													
	Ex-vessel Value (\$)													
TOTAL	Lbs. Landed	3,383,297	2,856,584	3,413,039	3,361,156	3,576,410	3,348,469	2,741,187	2,675,625	2,700,675	2,779,159	2,817,012	3,726,216	37,378,829
	Lbs. Sold													
	Ex-vessel Value (\$)													

**CHART D.2
SEA LANDINGS BY PORT ANNUAL 5-YEAR TRENDS, 2013 - 2017**



Calendar Year		YEAR				
PORT		2013	2014	2015	2016	2017
OAHU	Lbs. Landed	29,056,872	29,789,387	33,479,596	31,969,413	33,870,735
	Lbs. Sold					
	Value (Adj\$) ¹					
HAWAII	Lbs. Landed	2,794,379	3,025,511	2,905,006	2,009,945	2,218,973
	Lbs. Sold					
	Value (Adj\$) ¹					
KAUAI & NIIHAU	Lbs. Landed	821,482	769,950	775,025	704,139	635,363
	Lbs. Sold					
	Value (Adj\$) ¹					
MAUI COUNTY	Lbs. Landed	792,999	952,280	805,979	775,086	653,759
	Lbs. Sold					
	Value (Adj\$) ¹					
TOTAL	Lbs. Landed	33,465,732	34,537,127	37,965,606	35,458,584	37,378,829
	Lbs. Sold					
	Value (Adj\$) ¹					

¹ Honolulu Consumer Price Index (all wage earners)

APPENDICES
Statistical Tables
Calendar 2017

Appendix A - Sea Landings by Species

SPECIES	LBS. LANDED	LBS. SOLD	VALUE(\$)	SPECIES	LBS. LANDED	LBS. SOLD	VALUE(\$)
TUNAS				AKULE/OPELU			
Aku	712,705			Akule	290,489		
Bigeye	16,807,664			Hahalalu	10,602		
Bluefin	1,602			Opelu	111,750		
Kawakawa	10,340			Opelu Mama	10		
Keokeo	19			SUBTOTAL	412,851		
Tombo	285,930			JACKS			
Yellowfin	7,269,234			Barred-jack			
Unclassified	669			Butaguchi	339		
SUBTOTAL	25,088,163			Dobe	242		
BILLFISHES & SWORDFISH				Gunkan	335		
Black marlin	6,121			Kagami	320		
Blue marlin	1,819,367			Kamanu	5,877		
Sailfish	36,912			Lae	163		
Shortbill spearfish	680,560			Menpachi (sasa)	464		
Striped marlin	882,071			Omilu	7,923		
Swordfish	2,546,212			Paopao	145		
Unclassified	2,555			Papa	21,463		
SUBTOTAL	5,973,798			White	9,618		
MISC. PELAGIC FISHES				Unclass./misc.			
Kaku	5,446			SUBTOTAL	46,888		
Mahimahi	977,051			INSHORE FISHES			
Mola mola				<i>Parrotfishes</i>			
Monchong	898,892			Panuhunuhu	231		
Ono	953,794			Panunu	145		
Opah	1,790,982			Uhu	27,930		
Walu	320,225			<i>Goatfishes</i>			
SUBTOTAL	4,946,390			Kumu	1,178		
DEEP BOTTOMFISHES				Malu	38		
Alfonsin	17			Moana kali	1,984		
Aweoweo (Deepsea)	520			Moano	1,975		
Ehu	25,967			Munu	439		
Golden kale	255			Weke nono	4,468		
Hapuupuu	10,626			Weke pueo	48		
Hauliuli	1,747			Weke, red	18,922		
Hogo	1,279			Weke, white	5,833		
Kahala	17,780			Weke, unclass./mic.			
Kalekale	14,127			<i>Surgeonfishes</i>			
Lehi	9,880			Api	9		
Opakapaka	154,922			Black kole	38		
Randall snapper	44			Kala	18,977		
Taape	35,201			Kalalei	2,758		
Ukikiki (gindai)	2,649			Kole	1,596		
Uku	131,694			Maiii			
Ulaula (onaga)	69,300			Maiko	1,914		
Yellow-tail kale				Manini	9,408		
SUBTOTAL	476,008						

Due to low level of fishermen reporting and to preserve confidentiality, data for these species are pooled under their respective species group unclassified/miscellaneous or the Unclass./Misc. category.

SPECIES	LBS. LANDED	LBS. SOLD	VALUE(\$)	SPECIES	LBS. LANDED	LBS. SOLD	VALUE(\$)
INSHORE FISHES(cont.)				SHARKS			
<i>Surgeonfishes(cont.)</i>				Mako	99,009		
Naenae	6,315			Thresher	8,647		
Opelu kala	3,070			Tiger			
Pakuikui	17			Unclass/misc	3,617		
Palani	29,097			SUBTOTAL	111,273		
Pualu	4,044			LOBSTERS			
<i>Damselfishes</i>				Ula, Green spiny	5,210		
Kupipi				Ula, Red spiny	319		
Maomao	926			Haanii (slipper)			
<i>Squirrelfishes</i>				Squammosus	24		
Alaihi	252			SUBTOTAL	5,553		
Uu	50,529			CRABS			
Uukanipo	19			Aama			
<i>Wrasses</i>				Kona	2,080		
Aawa	2,888			Kuahonu			
Hilu				Samoan	1,999		
Hinalea	35			Crab (unclass./misc.)	11,324		
Kupoupou				SUBTOTAL	15,403		
Laenihi	3,487			SHRIMP			
Poou				Ensifer			
Unclass./misc.	238			Laevigatus	2,309		
<i>Miscellaneous Inshore Fishes</i>				SUBTOTAL	2,309		
Ahaaha	156			OTHER ANIMALS			
Aholehole	2,562			Hee (day tako)	18,000		
Amaama	2,424			Hee (night tako)			
Awa	1,122			He'e (unclass./misc.)	197		
Awaawa	831			Muhee (squid)	1,684		
Aweoweo	3,754			Opihi makaiauli	1,446		
Gold spot herring				Opihi 'alina	9,546		
Humuhumu	459			Opihi (unclass./misc.)			
Kawelea	1,984			Ha'uke'uke			
Loulu	327			Slate pencil urchins			
Makiawa	1,052			SUBTOTAL	30,874		
Moi	317			SHELLS			
Mu	4,896			SUBTOTAL	na		
Nenu	6,138				---		
Nohu	729			SEAWEEDS			
Nunu	120			Limu kohu	5,427		
Oio	5,070			Limu wawaeiole			
Pakii				Limu (unclass./misc.)			
Poopaa	349			SUBTOTAL	5,427		
Puhi (brown)	1,258			Unclass./misc.			
Puhi (white)	107				26,024		
Puhi (misc.)	79			TOTAL	37,378,829		
Roi	1,368						
Summer mullet							
Tilapia							
Toau	3,728						
Uouoa	172						
Wahanui	58						
SUBTOTAL	237,869						

Due to low level of fishermen reporting and to preserve confidentiality, data for these species are pooled under their respective species group unclassified/miscellaneous or the Unclass./Misc. category.

Appendix B - Sea Landings by Fishing Method

FISHING METHOD	LBS. LANDED	LBS. SOLD	VALUE(\$)
Aku pole & line			
Longline	32,551,651		
Deepbottom handline	472,177		
Inshore handline	182,231		
Tuna handline	1,302,119		
Other handline	4,048		
Trolling	2,196,628		
Diving	95,098		
Net	401,715		
Trap	34,198		
Rod & reel (casting, dunking, etc.)	104,894		
Handpick (limu & opihi)	17,251		
Unclass./Misc.	16,819		
TOTAL	37,378,829		

Appendix C - Sea Landings by Island

ISLAND	LBS. LANDED	LBS. SOLD	VALUE(\$)
Oahu	33,870,735		
Hawaii	2,218,973		
Maui	623,590		
Kauai & Niihau	635,363		
Molokai	21,663		
Lanai	8,506		
STATE TOTAL	37,378,829		

Appendix D - Sea Landings by Area Fished

AREA (area catch code)	LBS. LANDED	LBS. SOLD	VALUE(\$)
Main Hawaiian Islands (refer to Fisheries Chart No. 1)			
Kaula (508,528)	42,315		
Kaulakahi Channel (521,525)	28,640		
Niihau (505-506,526,527)	32,384		
Makahuena Pt. - Kekaha (500,520)	215,917		
Barking Sands - Na Pali Coast (501-502,522)	27,911		
Hanalei - Moloa'a Bay (503,523)	54,911		
Anahola - Nawiliwili (504,524)	225,527		
Sand Is. - Ala Wai (400,420)	39,163		
Pearl Harbor - Barbers Pt. (401,421)	118,136		
Barbers Pt. - Kaena Pt. (402-403,422-423)	381,418		
Kaena Pt. - Kahuku (404-405,424-425)	203,943		
Laie Pt. - Kahana Bay (406-426)	93,940		
Kaneohe Bay (407,427)	115,686		
Kailua Bay - Makapuu Pt. (408,428)	58,579		
Makapuu Pt. - Diamond Head (409)	30,256		

Appendix D - Sea Landings by Area Fished (cont.)

AREA (area catch code)	LBS. LANDED	LBS. SOLD	VALUE(\$)
Kawai (Molokai) Channel (332,429)	18,251		
Penguin Bank (331)	128,834		
Kealaikahiki Channel (327)	57,912		
Alenuihaha Channel (324-325)	98,191		
Auau, Kalohi & Pailolo Channels (321)	36,009		
Alalakeiki Channel (320)	85,344		
Molokai (310-314,333)	39,219		
Lanai (308-309,328)	48,203		
Kahoolawe (306-307,326)	22,685		
Makena - Hana (304-305)	22,533		
Hana - Kahului (302-303,322-323)	157,055		
Honolua - Lahaina (301)	7,728		
Lahaina - Makena (300)	56,926		
Milolii - South Pt. (100,108,120,128)	157,731		
Punaluu - Kalapana (107,127)	81,972		
Kona Coast (101,121)	813,669		
Keahole - Kawaihae (102,122)	190,152		
Kohala - Hamakua Coast (103-104,123-124)	44,219		
Hilo (105,125)	272,128		
Puna - Kalapana (106,126)	261,241		
Other (all other area codes from Fisheries Chart No. 1 not listed above)	207,027		
SUBTOTAL	4,475,750		

Other areas (not in Fisheries Charts 1 & 2)

(other mid-ocean and missing area fished codes) 32,903,079

TOTAL 37,378,829

Due to low level of fishermen reporting and to preserve confidentiality, data for these methods are not listed.

Appendix E - FAD Catches by Island and species

Hawaii FADs

<i>SPECIES</i>	<i>A</i>	<i>B</i>	<i>C</i>	<i>D</i>	<i>E</i>	<i>F</i>	<i>G</i>	<i>HK</i>	<i>KH</i>	<i>OTEC</i>	<i>RN</i>	<i>SS</i>	<i>TT</i>	<i>UU</i>	<i>VV</i>	<i>XX</i>	<i>ZZ</i>
Aku	--	79	1,090	107	704	--	2,235	4,853	287	692	--	--	592	145	177	170	--
Bigeye	--	--	585	--	--	--	237	--	--	--	--	--	1,434	1,043	1,057	--	--
Kawakawa	--	--	--	--	--	--	--	--	--	--	--	--	--	--	--	--	--
Keokeo	--	--	--	--	--	--	--	--	--	--	--	--	--	--	--	--	--
Tombo	--	--	1,712	--	278	--	--	--	--	--	--	--	--	--	2,228	--	--
Yellowfin	4,430	3,136	35,440	13,447	9,885	--	30,753	51,110	15,138	1,498	--	--	7,459	7,632	13,098	1,140	--
Tuna (misc.)	--	--	--	--	--	--	--	--	--	--	--	--	--	--	--	--	--
Blue marlin	--	--	989	422	--	--	1,757	4,892	--	2,448	--	--	1,094	395	3,805	--	--
Shortbill spearfish	--	--	93	--	--	--	--	--	--	180	--	--	--	--	--	--	--
Striped marlin	--	--	--	--	--	--	--	--	--	--	--	--	--	--	--	--	--
Swordfish	--	--	--	--	--	--	--	--	--	--	--	--	--	--	--	--	--
Kaku	--	--	--	--	--	--	--	--	--	--	--	--	--	--	--	--	--
Mahimahi	569	191	1,676	1,780	1,163	--	3,511	13,458	1,834	1,975	--	1,684	307	540	607	4,764	--
Ono	--	274	1,109	774	519	--	471	1,357	1,662	123	--	719	125	454	910	200	--
Walu	--	--	--	--	--	--	--	--	--	--	--	--	--	--	--	--	--
Uku	--	--	--	--	--	--	--	--	--	--	--	--	--	--	--	--	--
Akule	--	--	--	--	--	--	--	--	--	--	--	--	--	--	--	--	--
Opelu	--	--	--	--	--	--	--	--	--	--	--	--	--	--	110	--	--
Kamanu	--	--	--	--	--	--	--	--	--	--	--	--	--	--	--	--	--
White ulua	--	--	--	--	--	--	--	--	--	--	--	--	--	--	--	--	--
Kawalea	--	--	--	--	--	--	--	--	--	--	--	--	--	--	--	--	--
Thresher	--	--	--	--	--	--	--	--	--	--	--	--	--	--	--	--	--
Squid	--	--	--	--	--	--	--	--	--	--	--	--	--	--	--	--	--
Unclass./Misc.	455	345	85	--	443	--	519	1,156	2,240	121	--	1,920	--	486	902	--	--
TOTAL	5,454	4,024	42,778	16,530	12,993	--	39,482	76,826	21,160	7,037	--	4,323	11,010	10,694	22,893	6,274	0

Oahu FADs

<i>SPECIES</i>	<i>J</i>	<i>P</i>	<i>R</i>	<i>S</i>	<i>T</i>	<i>U</i>	<i>V</i>	<i>X</i>	<i>BO</i>	<i>CO</i>	<i>HH</i>	<i>II</i>	<i>LL</i>	<i>MM</i>
Aku	2,162	474	330	801	650	2,515	2,527	2,981	337	3,549	2,890	2,562	5,400	4,478
Bigeye	--	--	--	--	--	--	--	--	--	--	--	--	--	--
Kawakawa	--	--	--	133	--	--	--	--	--	--	--	--	--	--
Yellowfin	1,860	3,176	374	674	1,602	2,055	--	12,918	1,729	6,474	4,352	5,530	31,095	4,326
Tuna (misc.)	--	--	--	--	--	--	--	--	--	--	--	--	--	--
Black marlin	--	--	--	--	--	--	--	--	--	--	--	--	--	--
Blue marlin	1,033	--	5,713	1,877	880	--	--	1,889	2,907	4,425	2,775	1,168	2,897	1,923
Sailfish	--	--	--	--	--	--	--	--	--	--	--	--	--	--
Shortbill spearfish	--	--	--	--	--	--	--	--	--	106	132	--	80	--
Striped marlin	--	--	--	--	--	--	--	--	--	--	--	--	--	--
Kaku	--	--	--	--	--	--	--	--	--	--	--	--	--	--
Mahimahi	2,320	1,781	545	479	1,434	1,653	--	9,267	1,926	3,293	2,903	1,425	4,998	4,027
Ono	272	--	--	--	122	198	--	747	--	508	496	528	1,111	288
Kahala	--	--	--	--	--	--	--	--	--	--	--	--	--	--
Akule	--	--	--	--	--	--	--	--	--	--	--	--	--	--
Opelu	--	--	--	--	--	--	--	--	--	--	--	--	--	--
Kamanu	--	--	--	--	--	--	--	--	--	--	--	--	--	--
White ulua	--	--	--	--	--	--	--	--	--	--	--	--	--	--
Shark (Misc.)	--	--	--	--	--	--	--	--	--	--	--	--	--	--
Unclass./Misc.	--	1,890	760	188	--	275	960	528	325	--	--	328	454	124
TOTAL	7,647	7,321	7,721	4,153	4,688	6,696	3,487	28,330	7,224	18,355	13,548	11,540	46,035	15,166

Due to low level of fishermen reporting and to preserve confidentiality, data for these FADs by species are not listed.

Maui, Kahoolawe, Lanai, and Molokai FADs

<i>SPECIES</i>	<i>K</i>	<i>M</i>	<i>N</i>	<i>Q</i>	<i>CC</i>	<i>DD</i>	<i>FF</i>	<i>GG</i>	<i>HO</i>	<i>HS</i>	<i>JJ</i>	<i>LA</i>	<i>MC</i>	<i>NL</i>	<i>SO</i>
Aku	88	4,173	--	1,378	--	--	--	636	1,170	1,050	949	--	519	--	--
Bigeye	--	3,209	--	--	--	--	4,986	413	--	225	1,575	--	--	--	--
Kawakawa	--	--	--	--	--	--	--	--	--	--	--	--	--	--	--
Yellowfin	--	34,356	--	5,594	--	--	6,857	2,098	8,258	3,469	11,426	--	4,224	1,192	--
Tuna (misc.)	--	--	--	--	--	--	--	--	--	--	--	--	--	--	--
Blue marlin	--	800	--	928	--	--	--	--	1,085	--	778	--	--	--	--
Shortbill spearfish	--	--	--	--	--	--	--	--	--	--	--	--	143	--	--
Striped marlin	--	--	--	--	--	--	--	--	--	--	--	--	--	--	--
Kaku	--	--	--	--	--	--	--	--	--	--	--	--	--	--	--
Mahimahi	1,733	16,455	--	7,520	--	2,281	9,261	3,543	13,357	1,800	4,306	--	9,387	769	--
Ono	276	1,205	--	989	--	439	246	802	1,289	252	466	--	510	--	--
Uku	--	--	--	--	--	--	--	--	--	--	--	--	--	--	--
Kamanu	--	148	--	--	--	--	--	--	--	--	--	--	--	--	--
White ulua	--	--	--	--	--	--	--	--	--	--	--	--	--	--	--
Unclass./Misc.	1,454	--	--	--	--	752	--	401	323	--	78	--	2,857	--	--
TOTAL	3,551	60,346	0	16,407	--	3,472	21,350	7,892	25,482	6,797	19,579	0	17,640	1,961	--

Kauai FADs

<i>SPECIES</i>	<i>Z</i>	<i>AA</i>	<i>BB</i>	<i>CK</i>	<i>DK</i>	<i>EK</i>	<i>KK</i>	<i>PP</i>	<i>WK</i>
Aku	--	1,450	--	606	322	--	--	--	--
Bigeye	--	--	--	--	--	--	--	--	--
Kawakawa	--	--	--	--	--	--	--	--	--
Tombo	--	--	--	--	--	--	--	--	--
Yellowfin	3,322	31,174	8,119	3,130	2,763	6,627	21,067	3,228	4,344
Black marlin	--	--	--	--	--	--	--	--	--
Blue marlin	--	1,694	--	--	1,438	--	--	881	612
Sailfish	--	--	--	--	--	--	--	--	--
Shortbill spearfish	--	--	--	--	--	--	--	--	--
Striped marlin	--	--	--	--	--	--	--	--	--
Swordfish	--	--	--	--	--	--	--	--	--
Kaku	--	--	--	--	--	--	--	--	--
Mahimahi	360	1,788	265	307	--	73	183	379	1,674
Ono	--	1,169	190	470	--	182	783	--	194
Uku	--	--	--	--	--	--	--	--	--
Opelu	--	--	--	--	--	--	--	--	--
Kamanu	--	--	--	--	--	--	--	--	--
White papio	--	--	--	--	--	--	--	--	--
Squid	--	--	--	--	--	--	--	--	--
Unclass./Misc.	918	674	831	--	226	--	--	192	1,376
TOTAL	4,600	37,949	9,405	4,513	4,749	6,882	22,033	4,680	8,200

Other FADs

<i>SPECIES</i>	<i>MO</i>	<i>W1</i>	<i>W2</i>	<i>W3</i>	<i>W4</i>	<i>W8</i>
Aku	123	--	--	--	--	--
Bigeye	--	--	--	--	--	--
Kawakawa	--	--	--	--	--	--
Yellowfin	1,670	--	--	--	--	23,690
Blue marlin	--	--	--	--	--	--
Shortbill spearfish	--	--	--	--	--	--
Kaku	--	--	--	--	--	--
Mahimahi	3,365	--	--	--	--	1,273
Ono	--	--	--	--	--	--
Uku	--	--	--	--	--	--
Walu	--	--	--	--	--	--
Ulua (misc.)	--	--	--	--	--	--
Unclass./Misc.	--	--	--	--	--	4,461
TOTAL	5,158	0	0	0	--	29,424

Due to low level of fishermen reporting and to preserve confidentiality, data for these FADs by species are not listed.

Appendix F - FAD Catches by Island, FAD and Fishing Trip Count

Island	FAD	Location	# Mon. on Station	Fishing Method												
				Trolling			Tuna Handline			Aku boat			Other			
				Lbs.	# Trips	Lbs./ Trip	Lbs.	# Trips	Lbs./ Trip	Lbs.	# Trips	Lbs./ Trip	Lbs.	# Trips	Lbs./ Trip	
Hawaii	A	South Pt.	10.9	1,534	9	170.4	3,920	7	560.0							
	B	Miloli'i	6.3	1,635	13	125.7	1,416	7	202.3							
	C	Loa Pt.	12.0	12,764	100	127.6	28,859	138	209.1			1,168	22	53.1		
	D	Kumukahi	10.8	4,522	42	107.7	12,333	48	256.9							
	E	Leleiwi	10.8	7,586	60	126.4	5,315	28	189.8							
	F	Kailua-Kona	2.4													
	G	Pepe'ekeo	10.7	20,739	109	190.3	17,560	65	270.2			1,184	11	107.6		
	HK	Hakalau	12.0	43,073	191	225.5	29,135	85	342.8			4,619	44	105.0		
	KH	Kahena	10.9	4,453	43	103.6	15,810	44	359.3			1,163	17	68.4		
	OT	Waikoloa Pt.	10.9	6,750	47	143.6										
	RN	Palima Pt.	12.0													
	SS	Apua Pt.	10.9	3,474	15	231.6										
	TT	Kanewa'a	11.1	2,661	21	126.7	8,204	28	293.0							
	UU	Auau	12.0	3,215	31	103.7	7,189	32	224.7							
	VV	Kahalu'u	12.0	9,274	84	110.4	13,424	61	220.1			235	9	26.1		
XX	Puako	10.9	6,219	55	113.1											
ZZ	Waima Pt.	0.0														
Oahu	J	Waiale'e	11.4	7,791	47	165.8										
	P	Penguin Banks	9.1	7,001	27	259.3										
	R	Makaha	6.5	7,476	47	159.1						246	7	35.1		
	S	Pokai Bay	7.3	4,072	36	113.1										
	T	Makapu'u	6.8	4,718	19	248.3										
	U	Kane'ohe	9.1	5,929	55	107.8										
	V	Makua	12.0	1,350	11	122.7										
	X	Kahuku	11.5	27,238	128	212.8										
	BO	Barbers Pt.	6.5	7,224	67	107.8										
	CO	Ka'ena Pt.	12.0	18,044	141	128.0										
	HH	Pearl Harbor	12.0	13,604	106	128.3										
	II	Hale'iwa	9.1	10,974	103	106.5										
	LL	Hau'ula	12.0	44,697	232	192.7	325	3	108.3							
MM	Mokapu Pt.	12.0	15,070	87	173.2											

Due to low level of fishermen reporting and to preserve confidentiality, data for these FADs by fishing methods are not listed.

Island	FAD	Location	# Mon. on Station	Fishing Method											
				Trolling			Tuna Handline			Aku boat			Other		
				Lbs.	# Trips	Lbs./ Trip	Lbs.	# Trips	Lbs./ Trip	Lbs.	# Trips	Lbs./ Trip	Lbs.	# Trips	Lbs./ Trip
<i>Maui County</i>	K	Palaoa	11.5	3,011	57	52.8									
	M	Hana Bay	12.0	60,135	193	311.6	112	3	37.3						
	N	Cape Halawa	0.0												
	Q	Pauwela Pt.	12.0	16,452	99	166.2									
	CC	Ka'ena Pt.	12.0												
	DD	Opana Pt.	12.0	3,472	37	93.8									
	FF	Pukaulua Pt.	10.7	20,515	62	330.9	1,509	3	503.0						
	GG	Nakaohu Pt.	12.0	7,772	65	119.6									
	HO	Ho'olawa Pt.	12.0	25,416	141	180.3									
	HS	Halona	10.9	6,983	39	179.0									
	JJ	Kamohio	12.0	15,080	58	260.0							3,999	44	90.9
	LA	Lahaina	0.0												
	MC	Palaoa	12.0	8,564	88	97.3									
	NL	Nu'u	12.0	2,231	15	148.8									
SO	Kahoolawe	11.3													
<i>Kauai</i>	Z	Kipukai	11.0	2,981	21	142.0									
	AA	Port Allen	11.0	21,192	127	166.9	16,515	31	532.7				242	3	80.7
	BB	Moloa'a	12.0	7,662	48	159.6									
	CK	Makahu'ena Pt.	9.8	4,207	34	123.7									
	DK	Anahola	12.0	3,149	14	224.9									
	EK	Hanalei	6.4	6,432	40	160.8									
	KK	Waimea	10.5	21,241	26	816.9	902	3	300.7						
	PP	Koloa	11.0	2,472	16	154.5	2,208	5	441.6						
	WK	Wailua	6.4	7,295	62	117.7									

Due to low level of fishermen reporting and to preserve confidentiality, data for these FADs by fishing methods are not listed.