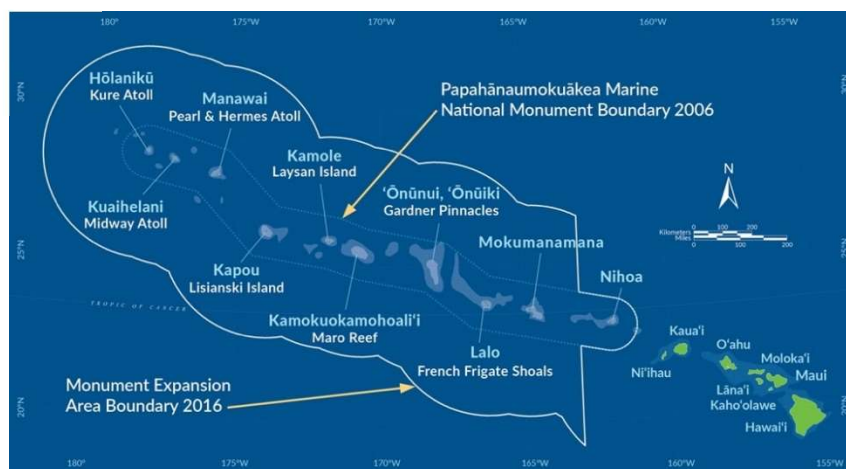


PROPOSED National Marine Sanctuary Designation for Papahānaumokuākea Marine National Monument



Papahānaumokuākea Marine National Monument (Papahānaumokuākea) encompasses 582,578 square miles of the Pacific Ocean.

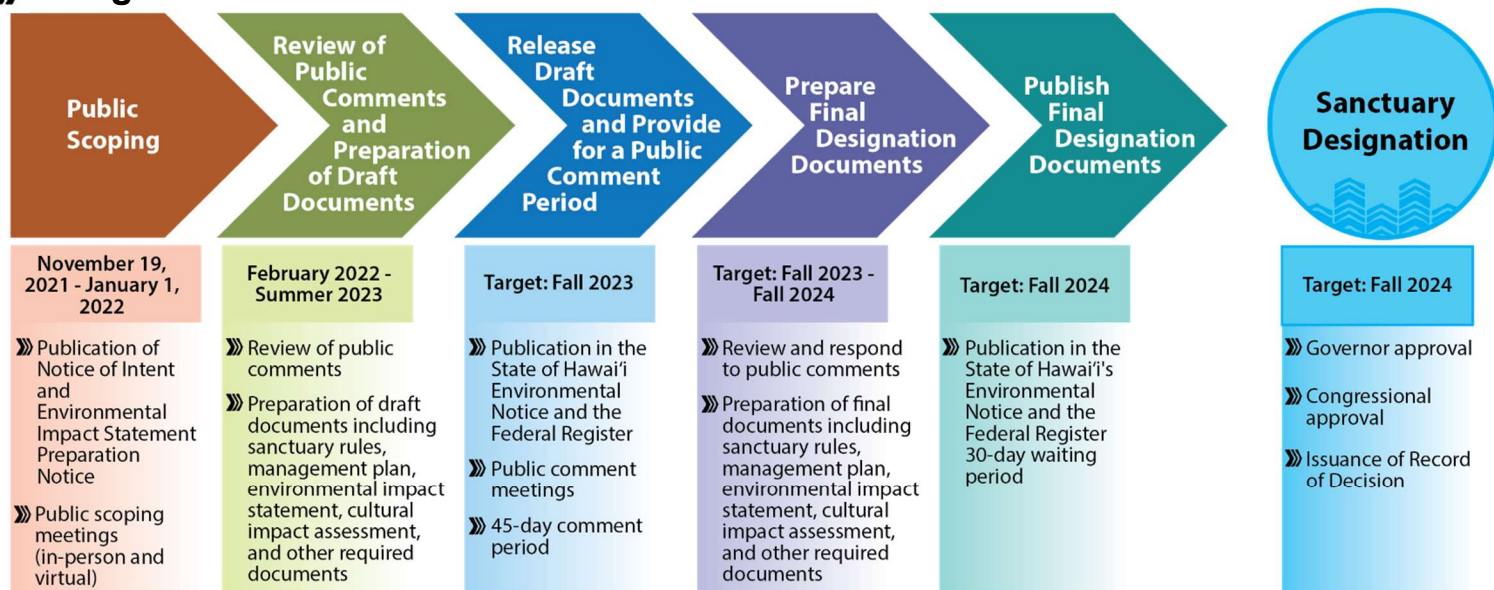
Papahānaumokuākea has four co-trustees and seven co-managing agencies. The State of Hawai'i is a trustee with jurisdiction over the Northwestern Hawaiian Islands Marine Refuge, Nihoa to Hōlanikū and surrounding 3 miles of waters (not including Kuaiahelani). The Department of Land and Natural Resources Division of Aquatic Resources (DAR) is a co-manager.



Sanctuary Designation

In December 2020, Congress directed the National Oceanic and Atmospheric Administration (NOAA) to initiate the sanctuary designation process, which does not change the status of the monument. Sanctuary designation would add conservation benefits by providing a supplemental regulatory framework and additional protections to safeguard living, cultural, and maritime heritage resources. Co-managers NOAA Office of National Marine Sanctuaries (ONMS) and DAR are leading the sanctuary designation process of the marine areas of Papahānaumokuākea which will include a joint National Environmental Policy Act (NEPA) and Hawaii Environmental Policy Act (HEPA) Environmental Impact Statement.

Designation Timeline



Public Participation

ONMS and DAR will co-host public meetings after publication of the draft materials. For more information, visit papahanaumokuakea.gov.