

Attention Boaters

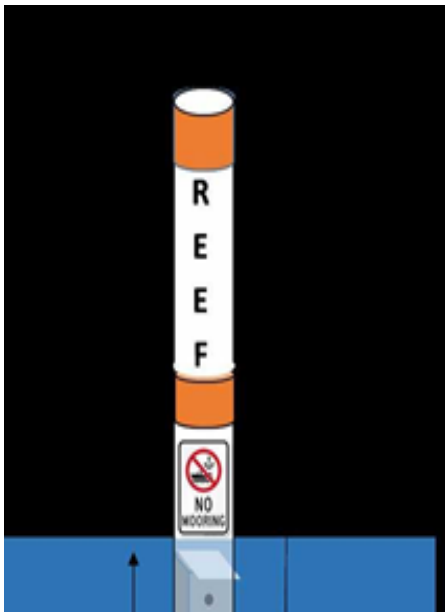
The Department of Land and Natural Resources has installed several reef markers in Kaneohe Bay, Oahu on patch reefs that are frequently hit by vessels traveling to and from the popular destination spot on the sandbar.

These markers are meant to be used as visual aid to help boaters unfamiliar with Kaneohe Bay to navigate around unseen boater hazards. **Please use caution when boating around reef markers because shallow water reefs are in the vicinity.**

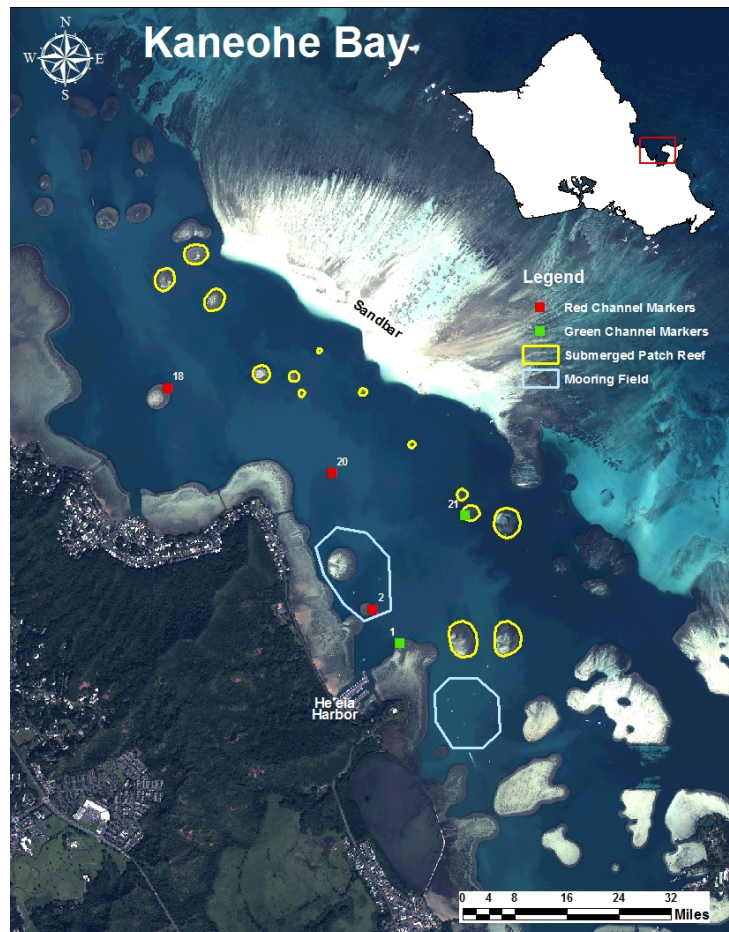
The markers can be seen above the water line and are delineated with orange bands, no mooring, and “REEF” indicating the vicinity of a coral reef.

These are not moorings and should not be used as such.

Not all reefs are marked so continue to use caution when traveling within Kaneohe Bay



Schematic of the type of markers that were placed on patch reefs in Kaneohe Bay



Aerial Imagery of Kaneohe Bay with patch reefs that vessels have run aground are highlighted