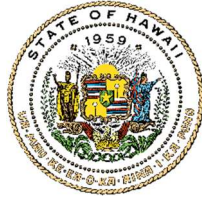


**JOSH GREEN, M.D.**  
GOVERNOR | KE KIA'ĀINA

**SYLVIA LUKE**  
LIEUTENANT GOVERNOR | KA HOPE KIA'ĀINA



**DAWN N.S. CHANG**  
CHAIRPERSON  
BOARD OF LAND AND NATURAL RESOURCES  
COMMISSION ON WATER RESOURCE  
MANAGEMENT

**LAURA H.E. KAAKUA**  
FIRST DEPUTY

**M. KALEO MANUEL**  
DEPUTY DIRECTOR - WATER

AQUATIC RESOURCES  
BOATING AND OCEAN RECREATION  
BUREAU OF CONVEYANCES  
COMMISSION ON WATER RESOURCE  
MANAGEMENT  
CONSERVATION AND COASTAL LANDS  
CONSERVATION AND RESOURCES  
ENFORCEMENT  
ENGINEERING  
FORESTRY AND WILDLIFE  
HISTORIC PRESERVATION  
KAHOOLAWE ISLAND RESERVE COMMISSION  
LAND  
STATE PARKS



**STATE OF HAWAII | KA MOKU'ĀINA 'O HAWAII'**  
**DEPARTMENT OF LAND AND NATURAL RESOURCES**  
**KA 'OIHANA KUMUWAIWAI 'ĀINA**

DIVISION OF FORESTRY AND WILDLIFE  
1151 PUNCHBOWL STREET, ROOM 325  
HONOLULU, HAWAII 96813

November 13, 2023

**SUBJECT: Section 106 Consultation for Restoration of Natural Ecological Processes to Enhance Flood Mitigation and Water Recharge Project, Kaua'i, HI**

To Whom It May Concern,

The Department of Land and Natural Resources Division of Forestry and Wildlife (DOFAW) is proposing to work on the Restoration of Natural Ecological Processes to Enhance Flood Mitigation and Water Recharge Project with Federal funds. Under Section 106 of the National Historic Preservation Act, DOFAW is consulting with Native Hawaiian Organizations and others related to historic properties or knowledge of Hawaiian practices. Historic properties include archeological sites, burial grounds, sacred landscapes or features, ceremonial areas, traditional cultural places and landscapes, plant and animal communities, and buildings and structures with significant association.

The Division of Forestry and Wildlife is partnering with Federal agencies to conduct a review of this project to comply with Section 106 of the National Historic Preservation Act and its implementing regulations 36 CFR Part 800. We would like to invite you to be a consulting party in this review to help identify historic properties in the project area that may have religious and cultural significance to your organization or community, and if such properties exist, to help assess how the project might affect them. If the project might have an adverse effect, we would like to discuss possible ways to avoid, minimize or mitigate potential adverse effects.

This consultation requests review of the three construction actions of the Restoration of Natural Ecological Processes to Enhance Flood Mitigation and Water Recharge Project – construction of temporary fencing in Puu Ka Pele Forest Reserve, a seed bank on the existing DOFAW baseyard in Lihue, and a new baseyard in Hanapepe. The purpose of the temporary fencing is to protect areas of reforestation work from hooved-animal ingress that will allow restoration of previously burnt areas and old eucalyptus and timber plantations. Step-overs and gates will be included to continue to allow public access into the fenced areas. The proposed seed bank facility will be located at the existing DOFAW baseyard at 4398 Pua Loke St., Lihue, HI 96766. It will accommodate larger seed collections in support of reforestation and restoration efforts across Kaua'i. The facility will double the existing storage capacity and will include lab improvements to support the processing of seeds. The proposed Hanapepe baseyard construction project will include a DOFAW Fire/Emergency Response building and facilities and storage to serve as a satellite office in emergency situations.

DLNR has made the determination that the temporary fences and seed bank facility will have no significant impact on the environment in accordance with General Exemption Types 3 and 4. An environmental assessment exemption notice was drafted for the fences and is currently open for comment. The construction of the seed bank facility is assessed as a de minimus action. In October of 2021, a Final Environmental Assessment was completed for the West Kaua'i Field Operations Facility in Hanapepe, Waimea that was inclusive of the proposed DOFAW facilities. The assessment determination was Finding of No Significant Impact. A 6E Historic Preservation Review letter will be submitted accordingly for these project actions.

The project also includes various natural resource management actions such as invasive species removal, outplanting, and monitoring that do not involve infrastructure installation.

Once the consultation period is over, and if there are no major concerns presented, DOFAW will begin with construction. However, if any sites or artifacts are discovered, all work will stop, the proper authorities will be notified, and an assessment of significance will occur.

If you are interested in participating in this undertaking as a consulting party, want to provide comments on the proposed project Area of Potential Effect (APE) and any historic properties in the APE, or want to suggest additional key contacts, please respond by December 15, 2023 via email to [Emma.Yuen@hawaii.gov](mailto:Emma.Yuen@hawaii.gov).

We value your assistance and look forward to your response.

Sincerely,

/s/

Emma Yuen  
Native Ecosystems Program Manager  
Division of Forestry and Wildlife  
Department of Land and Natural Resources

TMKs affected:

Waimea

[4] 1-4-001:014

Lihue

[4] 3-8-005:002

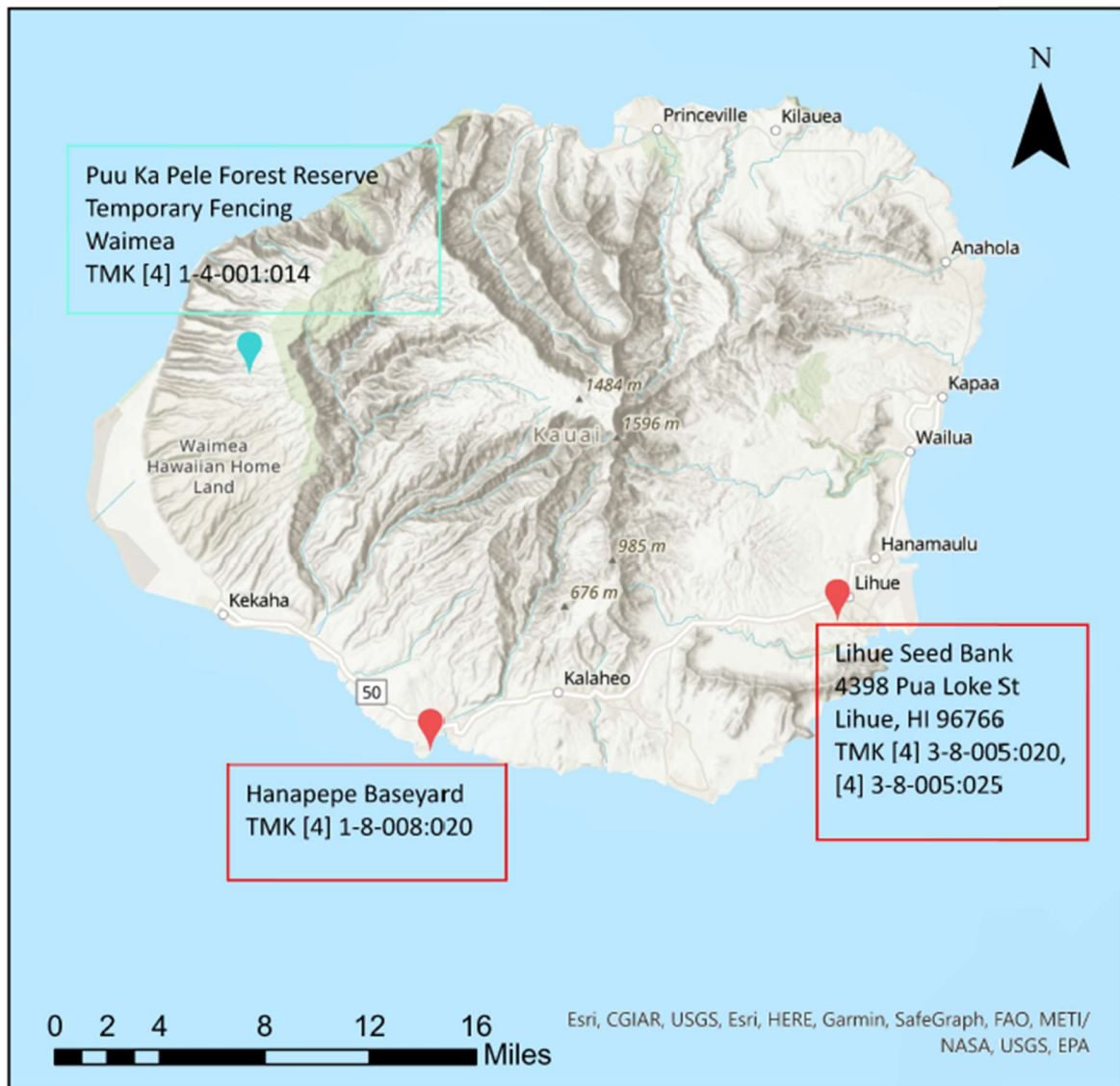
[4] 3-8-005:025

Hanapepe

[4] 1-8-008:020

# Kauai REPI

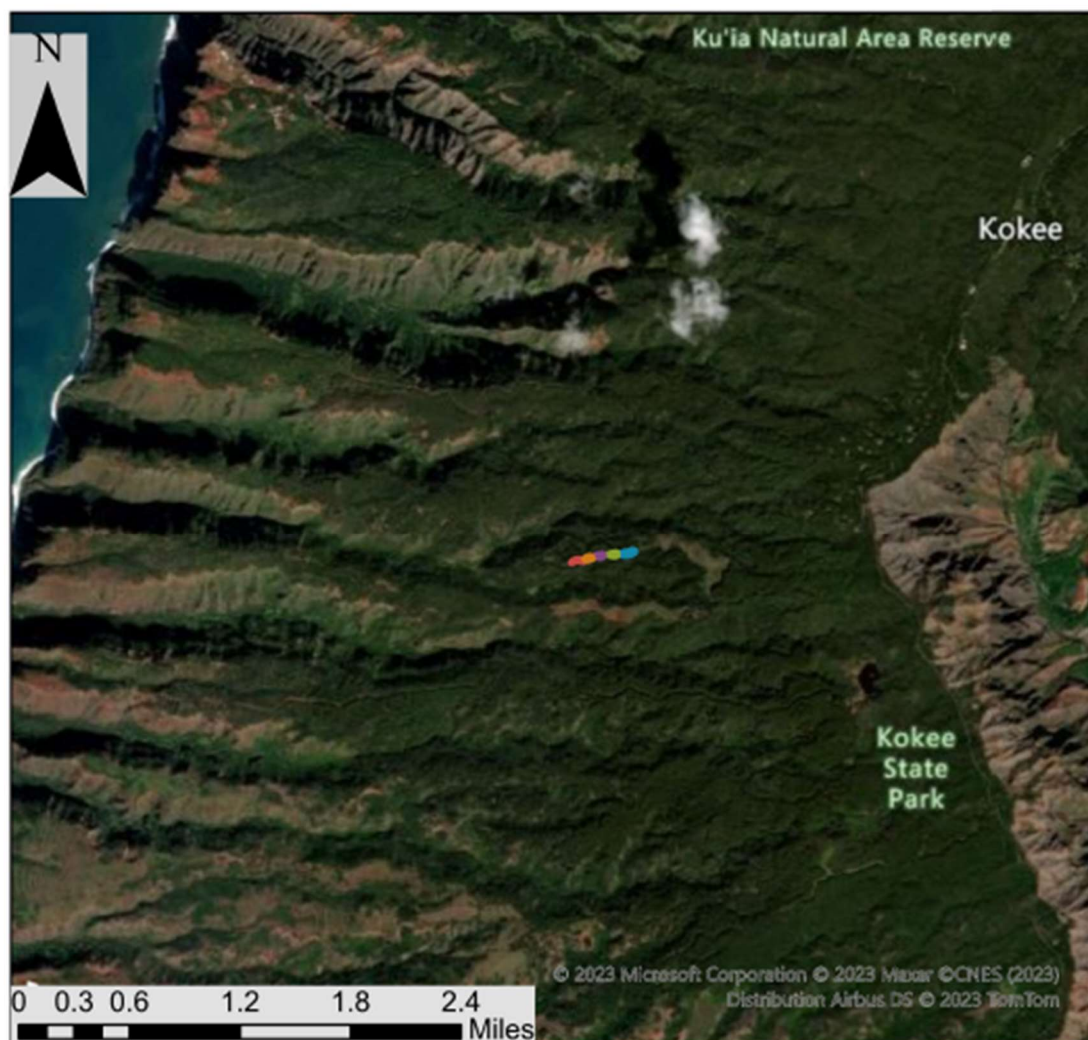
## Construction Project Locations



Map generated 11/8/2023. DLNR

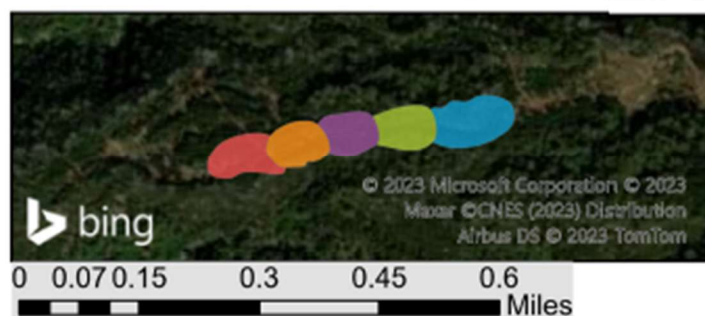
# Reforestation Areas with Temporary Fencing

## Puu Ka Pele Forest Reserve



### REPI\_Temporary Fencing Areas

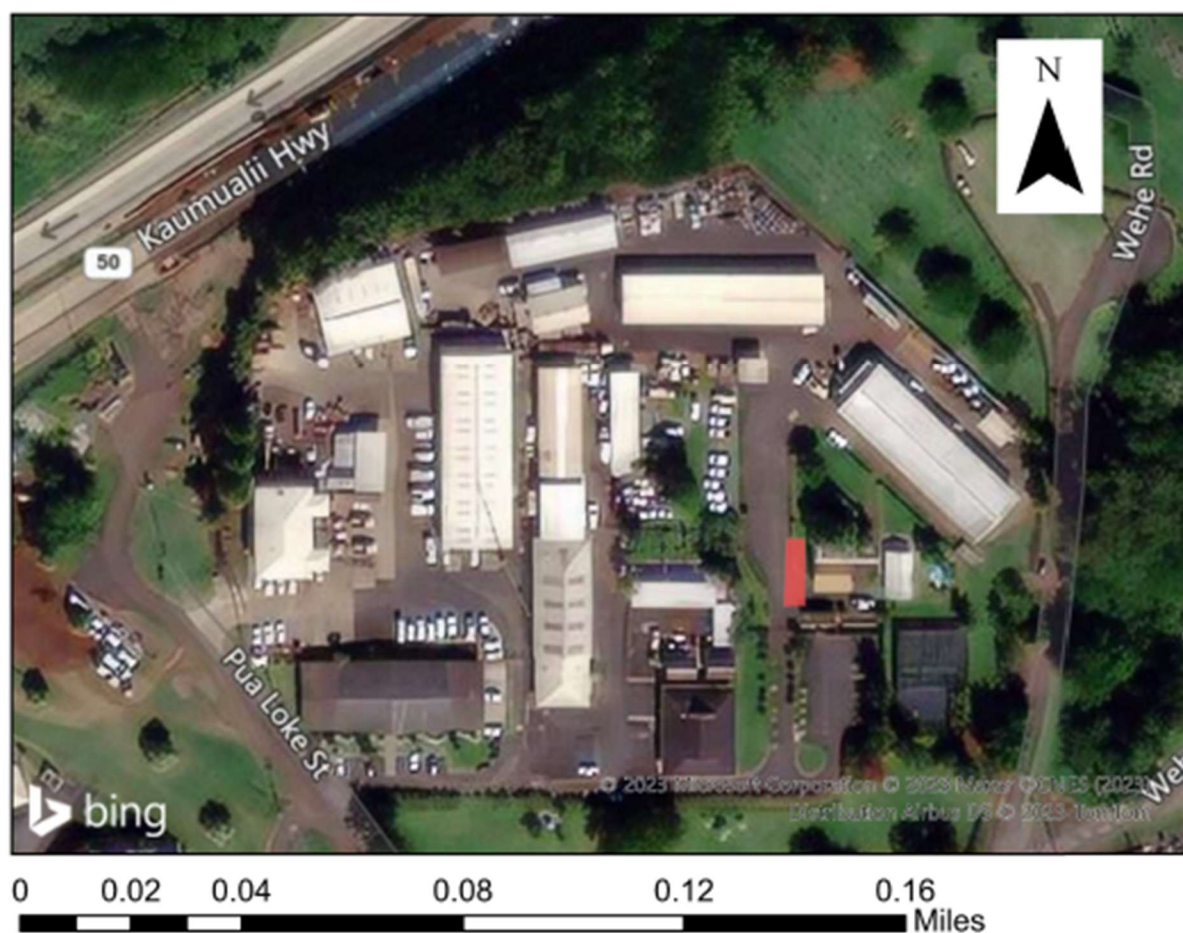
- Reforest\_FY23
- Reforest\_FY24
- Reforest\_FY25
- Reforest\_FY26
- Reforest\_FY27



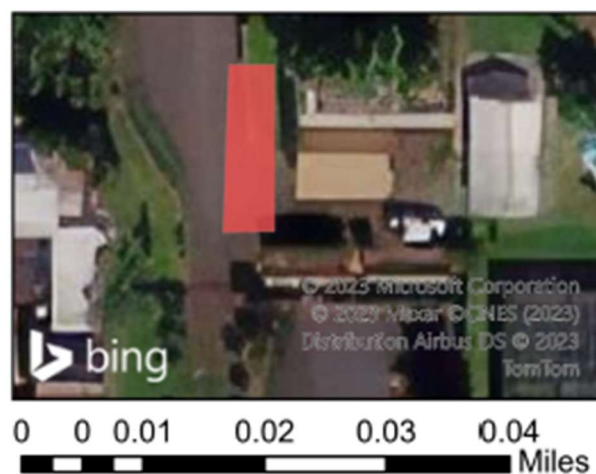
Maps generated on 10/25/2023 by DLNR.  
Features are approximate and subject to change.



# Seed Bank Facility Lihue Baseyard



Proposed location is approximate and subject to change.  
Map generated 11/7/2023. DLNR



# Hanapepe Baseyard



Proposed location is approximate and subject to change.  
Map generated 11/8/2023. DLNR

