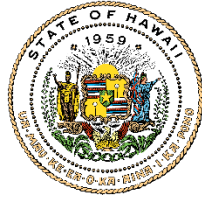


JOSH GREEN, M.D.
GOVERNOR | KE KIA'ĀINA

SYLVIA LUKE
LIEUTENANT GOVERNOR | KA HOPE KIA'ĀINA



DAWN N.S. CHANG
CHAIRPERSON
BOARD OF LAND AND NATURAL RESOURCES
COMMISSION ON WATER RESOURCE
MANAGEMENT

LAURA H.E. KAAKUA
FIRST DEPUTY

M. KALEO MANUEL
DEPUTY DIRECTOR - WATER

AQUATIC RESOURCES
BOATING AND OCEAN RECREATION
BUREAU OF CONVEYANCES
COMMISSION ON WATER RESOURCE
MANAGEMENT
CONSERVATION AND COASTAL LANDS
CONSERVATION AND RESOURCES
ENFORCEMENT
ENGINEERING
FORESTRY AND WILDLIFE
HISTORIC PRESERVATION
KAHOOLAWE ISLAND RESERVE COMMISSION
LAND
STATE PARKS



STATE OF HAWAII | KA MOKU'ĀINA 'O HAWAI'I
DEPARTMENT OF LAND AND NATURAL RESOURCES
KA 'OIHANA KUMUWAIWAI 'ĀINA

DIVISION OF FORESTRY AND WILDLIFE
1151 PUNCHBOWL STREET, ROOM 325
HONOLULU, HAWAII 96813

June 14, 2023

SUBJECT: Section 106 Consultation for Restoration of Natural Ecological Processes to Enhance Flood Mitigation and Water Recharge Project; Fire Mitigation Actions in Pu'u Ka Pele and Nā Pali Kona Forest Reserves, and Rapid 'Ōhi'a Death (ROD) Management Landscape-wide, Kaua'i, HI

To Whom It May Concern,

The Department of Land and Natural Resources Division of Forestry and Wildlife (DOFAW) is proposing to work on the Restoration of Natural Ecological Processes to Enhance Flood Mitigation and Water Recharge Project with Federal funds. Under Section 106 of the National Historic Preservation Act, DOFAW is consulting with Native Hawaiian Organizations and others related to historic properties or knowledge of Hawaiian practices. Historic properties include archeological sites, burial grounds, sacred landscapes or features, ceremonial areas, traditional cultural places and landscapes, plant and animal communities, and buildings and structures with significant association.

The Division of Forestry and Wildlife is partnering with Federal agencies to conduct a review of this project to comply with Section 106 of the National Historic Preservation Act and its implementing regulations 36 CFR Part 800. We would like to invite you to be a consulting party in this review to help identify historic properties in the project area that may have religious and cultural significance to your organization or community, and if such properties exist, to help assess how the project might affect them. If the project might have an adverse effect, we would like to discuss possible ways to avoid, minimize or mitigate potential adverse effects.

This consultation requests review of a ground disturbance activities as part of the Restoration of Natural Ecological Processes to Enhance Flood Mitigation and Water Recharge Project. Firebreak maintenance activities are being proposed for 15 miles of existing firebreaks within the Pu'u Ka Pele and Nā Pali Kona Forest Reserves along Miloli'i, Makaha, Kauhao, Ka'aweiki, Polihale, and Haele'ele ridges. Water catchments in Pu'u ka Pele Forest Reserve will be replaced at the end of the trail ridge roads of Kauhao, Ka'aweiki, Polihale, and Haele'ele near the 2000 foot elevation range. Ground disturbing work involves hand and machinery clearing of vegetation in corridors up to 20 feet from the road. These areas have been previously disturbed. Replacement water catchments will be of the same footprint as existing catchments. Some minimal ground disturbance is expected in the clearing of vegetation around the catchment areas and in the removal and installation process. Parcels are owned by the State of Hawai'i.

DLNR has made the determination that the firebreaks and water catchment replacements are “de minimis” actions and will have no significant impact on the environment in accordance with General Exemption Types 3 and 4, Part 1. A 6E Historic Preservation Review letter will be submitted accordingly for these project actions.

ROD will be monitored and sampled across Priority 1 Management Areas that is defined as all forested areas above 1,500 ft in elevation and areas under 1,500 ft elevation with a 500 ft buffer around Threatened and Endangered species, critical habitat, and exclosures. Suspected trees will be tested for *C. lukuohia* and *C. huliiohia*. As part of ROD containment protocol, temporary fencing is installed around all positive *C. lukuohia* trees to reduce ungulates from disturbing infected trees and surrounding soils. Fencing is constructed from 6 foot tall plastic mesh and metal t-posts to prevent ingress by pigs and people from moving the fungus and spores out of the area. Exact locations are yet undetermined but may occur across a broad landscape area and will be installed in localized areas. Present expectation is there will be approximately 20 trees identified and each tree would require approximately 40 feet of fencing per tree. DLNR has made the determination that the ROD fences are “de minimis” actions and will have no significant impact on the environment in accordance with General Exemption Types 3 and 4, Part 1. A 6E Historic Preservation Review letter will be submitted accordingly for these project actions.

Once the consultation period is over, and if there are no major concerns presented, DOFAW will begin with activities. However, if any sites or artifacts are discovered, all work will stop, the proper authorities will be notified, and an assessment of significance will occur.

If you are interested in participating in this undertaking as a consulting party, want to provide comments on the proposed project Area of Potential Effect (APE) and any historic properties in the APE, or want to suggest additional key contacts, please respond by July 14, 2024 via email to Emma.Yuen@hawaii.gov.

We value your assistance and look forward to your response.

Sincerely,

/s/

Emma Yuen
Native Ecosystems Program Manager
Division of Forestry and Wildlife
Department of Land and Natural Resources

Fire Mitigation TMKs affected:

Waimea

[4] 1-2-001:006

[4] 1-2-001:007

[4] 1-4-001:014

ROD Management TMKs potentially affected:

(4) 1-2-001:001	(4) 1-4-002:021	(4) 1-4-002:085	(4) 1-4-004:035	(4) 1-7-001:010
(4) 1-2-001:003	(4) 1-4-002:022	(4) 1-4-002:086	(4) 1-4-004:036	(4) 1-7-001:012
(4) 1-2-001:004	(4) 1-4-002:023	(4) 1-4-002:093	(4) 1-4-004:037	(4) 1-8-001:001
(4) 1-2-001:006	(4) 1-4-002:024	(4) 1-4-003:001	(4) 1-4-004:038	(4) 1-8-001:003
(4) 1-2-001:007	(4) 1-4-002:025	(4) 1-4-003:002	(4) 1-4-004:039	(4) 2-3-010:001
(4) 1-2-001:008	(4) 1-4-002:026	(4) 1-4-003:003	(4) 1-4-004:040	(4) 2-4-009:001
(4) 1-2-001:009	(4) 1-4-002:027	(4) 1-4-003:004	(4) 1-4-004:041	(4) 2-4-009:003
(4) 1-2-001:010	(4) 1-4-002:028	(4) 1-4-003:005	(4) 1-4-004:042	(4) 2-4-009:006
(4) 1-2-001:011	(4) 1-4-002:029	(4) 1-4-003:006	(4) 1-4-004:043	(4) 2-4-009:007
(4) 1-2-001:999	(4) 1-4-002:030	(4) 1-4-003:007	(4) 1-4-004:044	(4) 2-5-001:006
(4) 1-2-002:001	(4) 1-4-002:031	(4) 1-4-003:008	(4) 1-4-004:045	(4) 2-6-003:051
(4) 1-2-002:016	(4) 1-4-002:032	(4) 1-4-003:009	(4) 1-4-004:046	(4) 2-6-003:052
(4) 1-2-002:017	(4) 1-4-002:034	(4) 1-4-003:010	(4) 1-4-004:047	(4) 2-7-001:002
(4) 1-2-002:018	(4) 1-4-002:035	(4) 1-4-003:011	(4) 1-4-004:048	(4) 2-9-001:001
(4) 1-2-002:019	(4) 1-4-002:036	(4) 1-4-003:012	(4) 1-4-004:049	(4) 2-9-003:001
(4) 1-2-002:020	(4) 1-4-002:037	(4) 1-4-003:013	(4) 1-4-004:050	(4) 2-9-003:003
(4) 1-2-002:023	(4) 1-4-002:039	(4) 1-4-003:014	(4) 1-4-004:051	(4) 2-9-003:004
(4) 1-2-002:033	(4) 1-4-002:040	(4) 1-4-003:016	(4) 1-4-004:052	(4) 2-9-003:005
(4) 1-2-002:999	(4) 1-4-002:041	(4) 1-4-003:017	(4) 1-4-004:053	(4) 2-9-003:006
(4) 1-4-001:001	(4) 1-4-002:042	(4) 1-4-004:001	(4) 1-4-004:054	(4) 3-1-001:002
(4) 1-4-001:002	(4) 1-4-002:043	(4) 1-4-004:002	(4) 1-4-004:055	(4) 3-1-001:003
(4) 1-4-001:003	(4) 1-4-002:044	(4) 1-4-004:003	(4) 1-4-004:056	(4) 3-1-002:001
(4) 1-4-001:007	(4) 1-4-002:045	(4) 1-4-004:004	(4) 1-4-004:057	(4) 3-4-001:001
(4) 1-4-001:010	(4) 1-4-002:046	(4) 1-4-004:005	(4) 1-4-004:058	(4) 3-8-001:001
(4) 1-4-001:011	(4) 1-4-002:047	(4) 1-4-004:006	(4) 1-4-004:059	(4) 3-9-001:001
(4) 1-4-001:012	(4) 1-4-002:048	(4) 1-4-004:007	(4) 1-4-004:060	(4) 4-2-001:002
(4) 1-4-001:013	(4) 1-4-002:051	(4) 1-4-004:008	(4) 1-4-004:061	(4) 4-2-001:011
(4) 1-4-001:014	(4) 1-4-002:052	(4) 1-4-004:009	(4) 1-4-004:062	(4) 4-2-004:001
(4) 1-4-001:015	(4) 1-4-002:053	(4) 1-4-004:010	(4) 1-4-004:063	(4) 4-6-001:001
(4) 1-4-001:016	(4) 1-4-002:054	(4) 1-4-004:011	(4) 1-4-004:064	(4) 4-7-001:001
(4) 1-4-001:017	(4) 1-4-002:055	(4) 1-4-004:012	(4) 1-4-004:065	(4) 4-7-001:002
(4) 1-4-001:018	(4) 1-4-002:059	(4) 1-4-004:013	(4) 1-4-004:066	(4) 4-8-001:001
(4) 1-4-001:019	(4) 1-4-002:060	(4) 1-4-004:014	(4) 1-4-004:067	(4) 4-9-001:001
(4) 1-4-001:020	(4) 1-4-002:061	(4) 1-4-004:016	(4) 1-4-004:068	(4) 5-1-001:001
(4) 1-4-001:999	(4) 1-4-002:062	(4) 1-4-004:017	(4) 1-4-004:069	(4) 5-2-001:001
(4) 1-4-002:004	(4) 1-4-002:063	(4) 1-4-004:018	(4) 1-4-004:070	(4) 5-2-001:002
(4) 1-4-002:005	(4) 1-4-002:066	(4) 1-4-004:019	(4) 1-4-004:072	(4) 5-2-001:003
(4) 1-4-002:007	(4) 1-4-002:067	(4) 1-4-004:020	(4) 1-4-004:073	(4) 5-2-001:004
(4) 1-4-002:008	(4) 1-4-002:068	(4) 1-4-004:021	(4) 1-4-004:074	(4) 5-2-001:005
(4) 1-4-002:010	(4) 1-4-002:069	(4) 1-4-004:024	(4) 1-4-004:075	(4) 5-2-004:063
(4) 1-4-002:012	(4) 1-4-002:071	(4) 1-4-004:027	(4) 1-4-004:076	(4) 5-2-004:064
(4) 1-4-002:013	(4) 1-4-002:073	(4) 1-4-004:028	(4) 1-5-001:001	(4) 5-2-004:066
(4) 1-4-002:014	(4) 1-4-002:075	(4) 1-4-004:029	(4) 1-5-001:002	(4) 5-2-004:067
(4) 1-4-002:015	(4) 1-4-002:076	(4) 1-4-004:030	(4) 1-5-001:015	(4) 5-2-004:071
(4) 1-4-002:016	(4) 1-4-002:078	(4) 1-4-004:031	(4) 1-5-001:017	(4) 5-2-005:031
(4) 1-4-002:018	(4) 1-4-002:079	(4) 1-4-004:032	(4) 1-5-001:019	(4) 5-2-005:036
(4) 1-4-002:020	(4) 1-4-002:081	(4) 1-4-004:033	(4) 1-7-001:001	(4) 5-4-001:001

ROD Management TMKs continued:

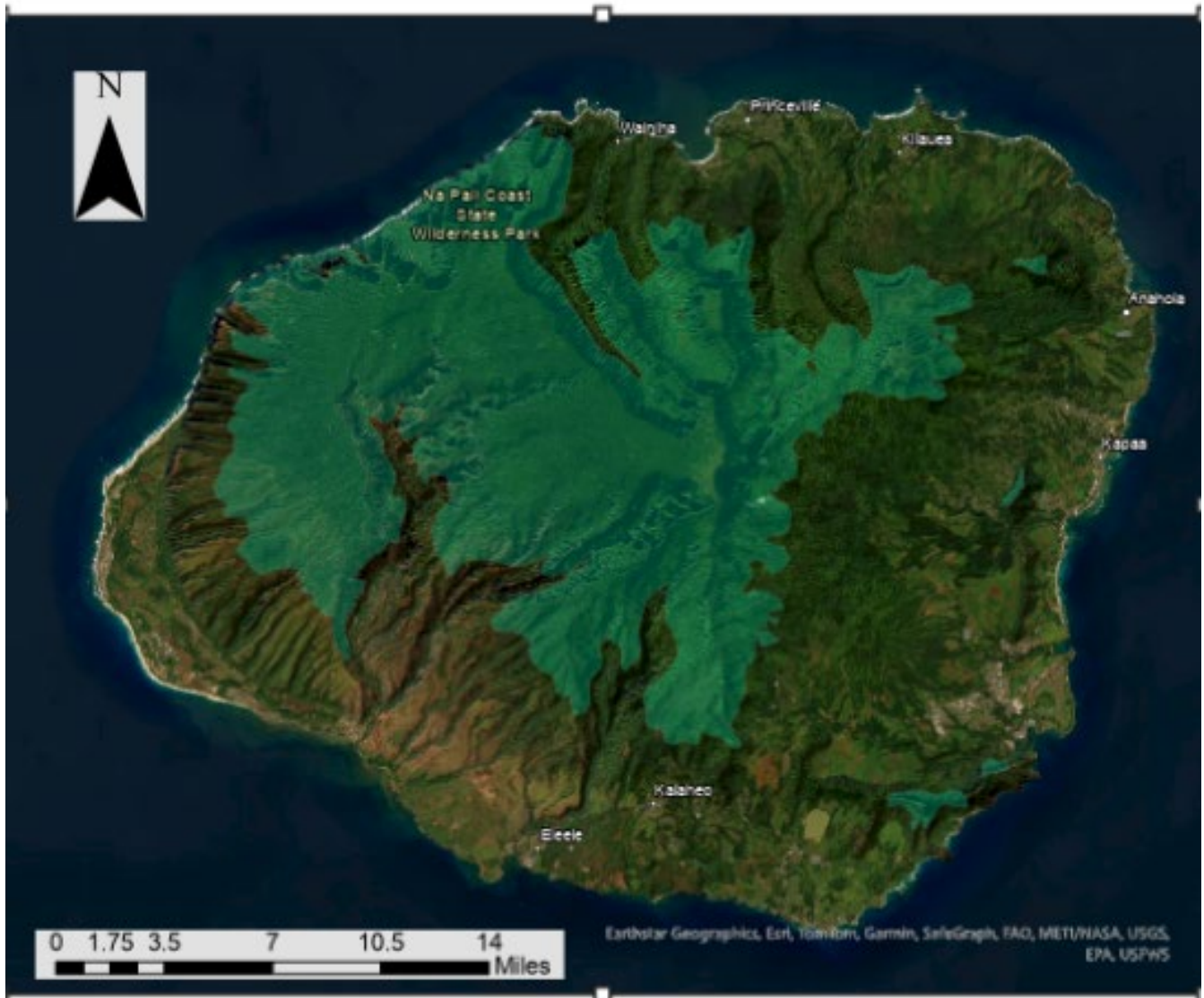
(4) 5-4-005:007	(4) 5-6-001:001
(4) 5-4-005:010	(4) 5-6-001:002
(4) 5-4-005:012	(4) 5-7-001:001
(4) 5-4-005:016	(4) 5-7-001:002
(4) 5-4-005:022	(4) 5-8-001:001
(4) 5-4-005:032	(4) 5-8-002:002
(4) 5-4-005:035	(4) 5-9-001:001
(4) 5-4-005:037	(4) 5-9-001:002
(4) 5-4-005:038	(4) 5-9-001:003
(4) 5-4-005:039	(4) 5-9-001:016
(4) 5-4-005:040	(4) 5-9-001:017
(4) 5-4-005:052	(4) 5-9-001:021
(4) 5-4-013:022	(4) 5-9-001:022
(4) 5-4-013:023	(4) 5-9-001:023
(4) 5-4-013:024	(4) 5-9-001:024
(4) 5-4-013:028	
(4) 5-4-013:029	
(4) 5-4-013:030	
(4) 5-4-013:031	

Firebreak Maintenance and Water Catchment Replacement Pu'u ka Pele and Nā Pali Kona Forest Reserves, Kauai



Map generated June 14, 2024
Features are approximate and subject to change.

ROD Priority 1 Management Areas



Map generated June 14, 2024
Features are approximate and subject to change.