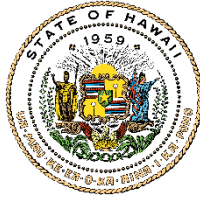


JOSH GREEN, M.D.
GOVERNOR | KE KIA'ĀINA

SYLVIA LUKE
LIEUTENANT GOVERNOR | KA HOPE KIA'ĀINA



STATE OF HAWAII | KA MOKU'ĀINA 'O HAWAI'I
DEPARTMENT OF LAND AND NATURAL RESOURCES
KA 'OIHANA KUMUWAIWAI 'ĀINA

P.O. BOX 621
HONOLULU, HAWAII 96809

December 12, 2024

DAWN N.S. CHANG
CHAIRPERSON
BOARD OF LAND AND NATURAL RESOURCES
COMMISSION ON WATER RESOURCE
MANAGEMENT

RYAN K.P. KANAKA'OLE
FIRST DEPUTY

DEAN D. UYENO
ACTING DEPUTY DIRECTOR - WATER

AQUATIC RESOURCES
BOATING AND OCEAN RECREATION
BUREAU OF CONVEYANCES
COMMISSION ON WATER RESOURCE
MANAGEMENT
CONSERVATION AND COASTAL LANDS
CONSERVATION AND RESOURCES
ENFORCEMENT
ENGINEERING
FORESTRY AND WILDLIFE
HISTORIC PRESERVATION
KAHOOLAWE ISLAND RESERVE COMMISSION
LAND
STATE PARKS

SUBJECT: Section 106 Consultation for Mauna Kea Palila Predator Proof Fence, Army Compatible Use Buffer in the vicinity of United States Army Garrison Hawaii, Island of Hawaii, Hawaii

To Whom It May Concern,

The Department of Land and Natural Resources Division of Forestry and Wildlife (DOFAW) is proposing to work on the project listed above with Federal funds. Under Section 106 of the National Historic Preservation Act, DOFAW is consulting with Native Hawaiian Organizations and others related to historic properties or knowledge of Hawaiian practices. Historic properties include archeological sites, burial grounds, sacred landscapes or features, ceremonial areas, traditional cultural places and landscapes, plant and animal communities, and buildings and structures with significant association.

The Division of Forestry and Wildlife is partnering with the United States Army Garrison Hawaii to conduct a review of this project to comply with Section 106 of the National Historic Preservation Act and its implementing regulations 36 CFR Part 800. We would like to invite you to be a consulting party in this review to help identify historic properties in the project area that may have religious and cultural significance to your organization or community, and if such properties exist, to help assess how the project might affect them. If the project might have an adverse effect, we would like to discuss possible ways to avoid, minimize or mitigate potential adverse effects.

Project Description

The project area is within the Mauna Kea Forest Reserve, TMK (3)4-4-015:001, Ka'ohē Mauka Ahupua'a, North Hilo District, Island of Hawai'i. Located on the western flank of Mauna Kea at an elevation of approximately 9,600 feet. The nearest road is only accessible by 4x4 vehicles.

The proposed project will include construction of a predator-proof fence to prevent intrusion by ungulates and cats. The fence will be approximately 6,163.82 meters/3.83 miles in length and encompass approximately 513.43 acres of Palila nesting habitat and endangered plant species endemic to Mauna Kea.

Once the consultation period is over, and if there are no major concerns presented, DOFAW will begin constructing the fence. No artifacts are expected to be encountered. However, if any sites or artifacts are discovered, all work will stop, the proper authorities will be notified, and an assessment of significance will occur.

If you are interested in participating in this undertaking as a consulting party, want to provide comments on the proposed project Area of Potential Effect (APE) and any historic properties in the APE, or want to suggest additional key contacts, please respond by January 12, 2025 via email to Emma.Yuen@hawaii.gov.

We value your assistance and look forward to your response.

Sincerely,

/s/

Emma Yuen
Native Ecosystems Program Manager
Division of Forestry and Wildlife
Department of Land and Natural Resources

TMK affected:
(3) 4-4-015:001

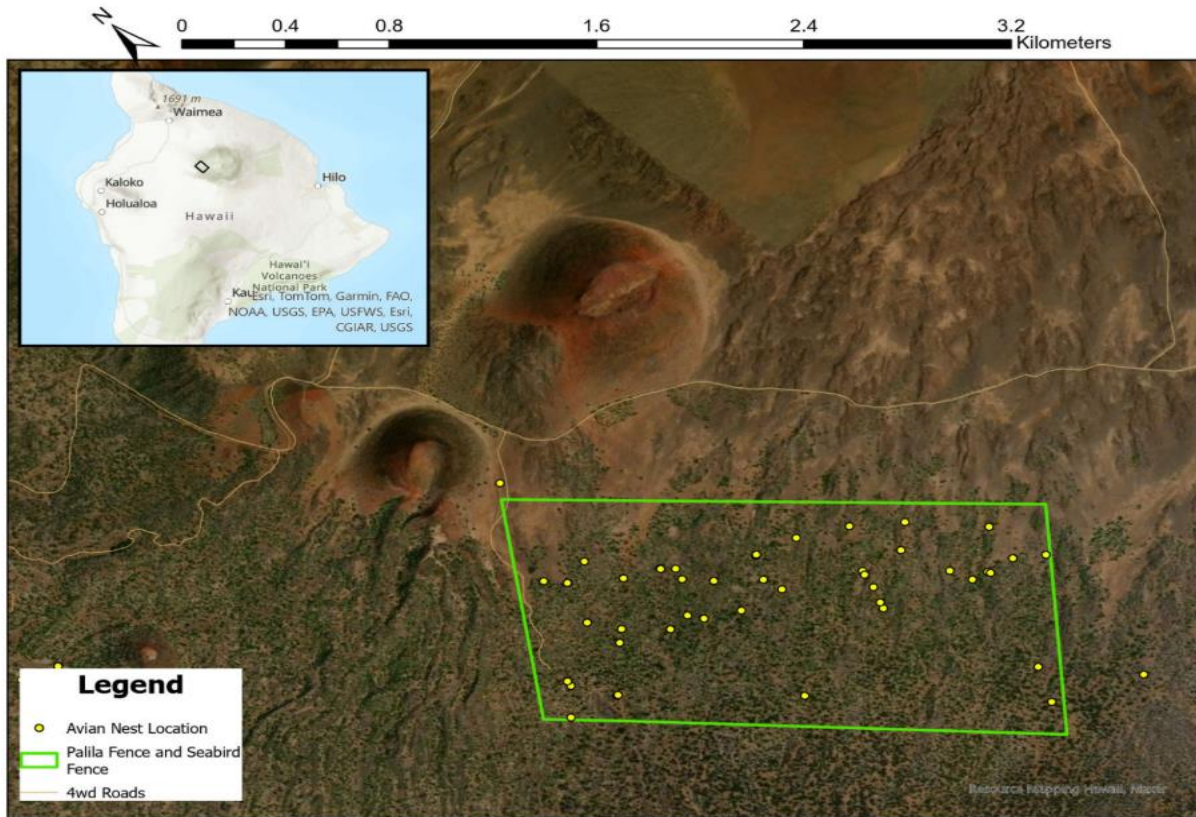


Figure 1: Location of proposed project. Features are approximate and subject to change. Map generated by DLNR.