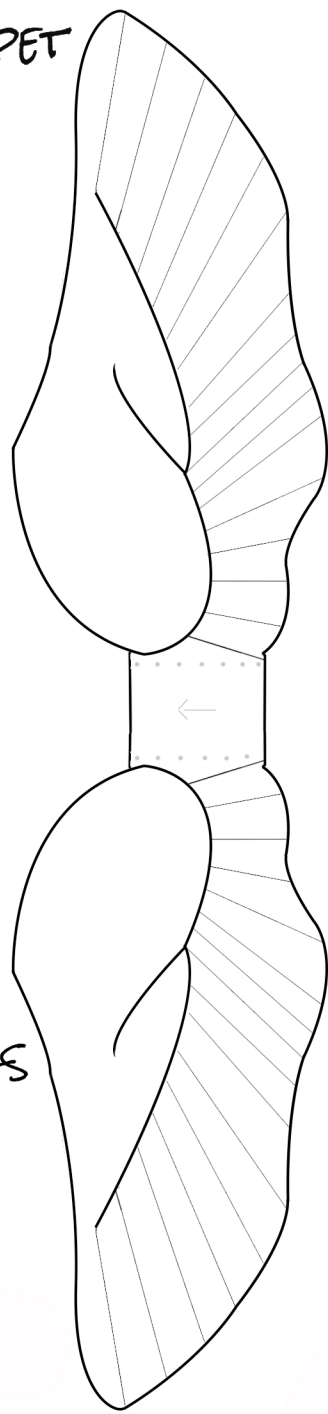
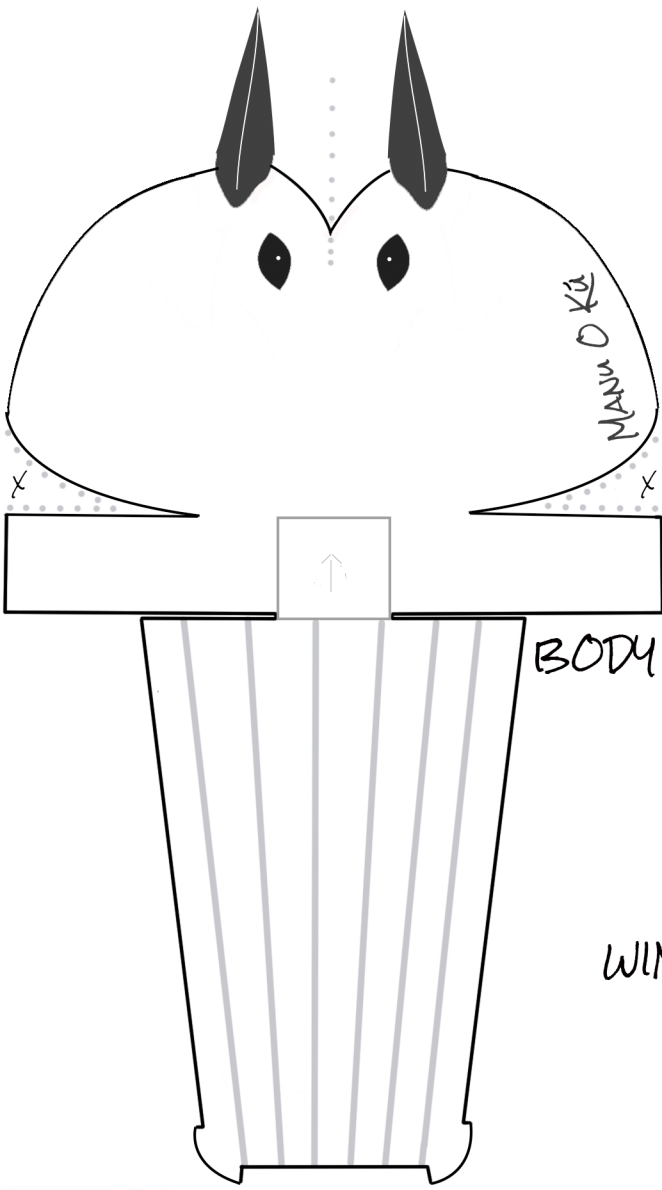


HAWAII MANU O KŪ FINGER PUPPET



ALL ABOUT THE MANU O KŪ

MEET THE WHITE "FAIRY" TERN

THE MANU O KŪ OR WHITE (FAIRY) TERN IS A SMALL, ENTIRELY WHITE TERN. THERE ARE 1500 FOUND IN THE WILD. IN HAWAII THERE ARE ABOUT 250, AND THEY COULD ONLY BE FOUND ON OAHU!

WHAT'S ON THE MENU?

MANU-O-KŪ (WHITE TERN) FEED BY DIPPING THE SURFACE OR SURFACE DIVING. OFTEN JOINS MIXED SPECIES FEEDING FLOCKS AND USUALLY PREYS ON FISH DRIVEN TO THE SURFACE BY LARGE, PREDATORY FISH. IN HAWAII, THE DIET OF WHITE TERNS CONSISTS MOSTLY OF JUVENILE GOATFISH AND FLYING FISH.

CITY NESTING IS A BALANCING ACT!

MANU O KŪ REMAIN PAIRED FOR SEVERAL SEASONS AND OFTEN RETURN TO THE SAME NEST SITE YEAR-AFTER-YEAR. NO NEST IS CONSTRUCTED; A SINGLE EGG IS LAID WHEREVER A SUITABLE DEPRESSION IS FOUND. WHITE TERNS WILL RAISE TWO OR THREE CHICKS PER YEAR. MOST NESTS ARE ON TREE BRANCHES OR MAN-MADE STRUCTURES IN HONOLULU!

Learn more about us at: dlnr.hawaii.gov

CUT ALONG DOTTED LINES (WOW YOUR FRIENDS WITH HOW MUCH YOU KNOW!)

MANU O KŪ FINGER PUPPET DIRECTIONS

1. PRINT ON CARD STOCK. CUT OUT THE BODY AND WINGS. DO NOT CUT OFF THE WHITE TABS (SQUARE) BETWEEN WINGS. ALSO DO NOT CUT OUT THE RECTANGULAR TABS BETWEEN THE BODY AND THE TAIL.
2. CUT ALONG WHITE DOTTED LINES BEHIND THE HEAD OF THE BIRD TO REMOVE THE PIECE WITH THE BLACK "X". ALSO MAKE A CUT UNDER THE RECTANGLE TABS AND ABOVE THE START OF THE TAIL.
3. FOLD ALONG WHITE DOTTED LINES BETWEEN EYES WHILE MATCHING UP BOTH SIDES OF THE BEAK. GLUE (TAPE OR STAPLE) BEAK TOGETHER USING A GLUE STICK. GLUE (TAPE OR STAPLE) THE BOTTOM EDGE OF THE HEAD (NECK AREA) TO KEEP SIDES TOGETHER. BE SURE TO JUST FASTEN THE EDGE AS YOUR FINGER WILL NEED TO FIT IN THE OPENING BETWEEN THE TWO SIDES ONCE THE PUPPET IS COMPLETE.
4. FOLD WINGS UP ON DOTTED LINES AND GLUE (TAPE OR STAPLE) THE WINGS OVER THE GREY SQUARE ON THE BODY. BE SURE TO MATCH UP THE ARROWS SO THEY ARE FACING THE SAME DIRECTION.
5. BEND RECTANGULAR TABS INTO A RING THAT FITS YOUR FINGER. GLUE (TAPE OR STAPLE) THE TABS TOGETHER.

STATE OF HAWAII, DEPARTMENT OF LAND AND NATURAL RESOURCES,
DIVISION OF FORESTRY AND WILDLIFE

