

# Waimea Canyon Trails

## 1. Iliau Nature Loop - Easy

Trailhead: Between mile markers 8-9 on Hwy. 550  
 Length: 0.3 mile / 0.5 kilometer (loop distance)  
 Description: Roadside trail through dry shrubland with plant signs and sweeping views of Waimea and Wai'ālae Canyons. Named for iliau plant.

## 2. Kukui Trail - DIFFICULT

Trailhead: Begins from the Iliau Nature Loop  
 Length: 2.5 miles / 4.0 kilometers  
 Description: Steep drop of 2,000 feet to the floor of Waimea Canyon where it connects with Waimea Canyon Trail that leads to Waimea Town (additional 11.5 miles).

## 3. Canyon Trail - Moderate

Trailhead: Pu'u Hinahina Lookout or Halemanu Road  
 Length: 1.8 miles / 2.9 kilometers  
 Description: Follows rim of Waimea Canyon with great views of the canyon. Trail crosses Kōke'e Stream and ends at Waipo'o Falls.

# Nāpali & Forest Trails

## Trails adjacent to Nāpali Coast State Wilderness Park.

## 14. Nu'alolo Trail - DIFFICULT

Trailhead: Begins near Park Headquarters  
 Length: 3.8 miles / 6.1 kilometers (allow 5 hours hiking time)  
 Description: Trail drops 1,400 feet in first mile. Trail can be open and hot - bring plenty of water. Views of Nu'alolo Valley.

## 15. Awa'awapuhi Trail - DIFFICULT

Trailhead: Near mile marker 17 along Kōke'e Road  
 Length: 3.1 miles / 5 kilometers  
 Description: Trail drops 1,300 feet along length and ends at lookout over valleys of Nāpali. Connects with Nu'alolo Trail to make a loop.

## 16. Kaluapuhi Trail - Easy

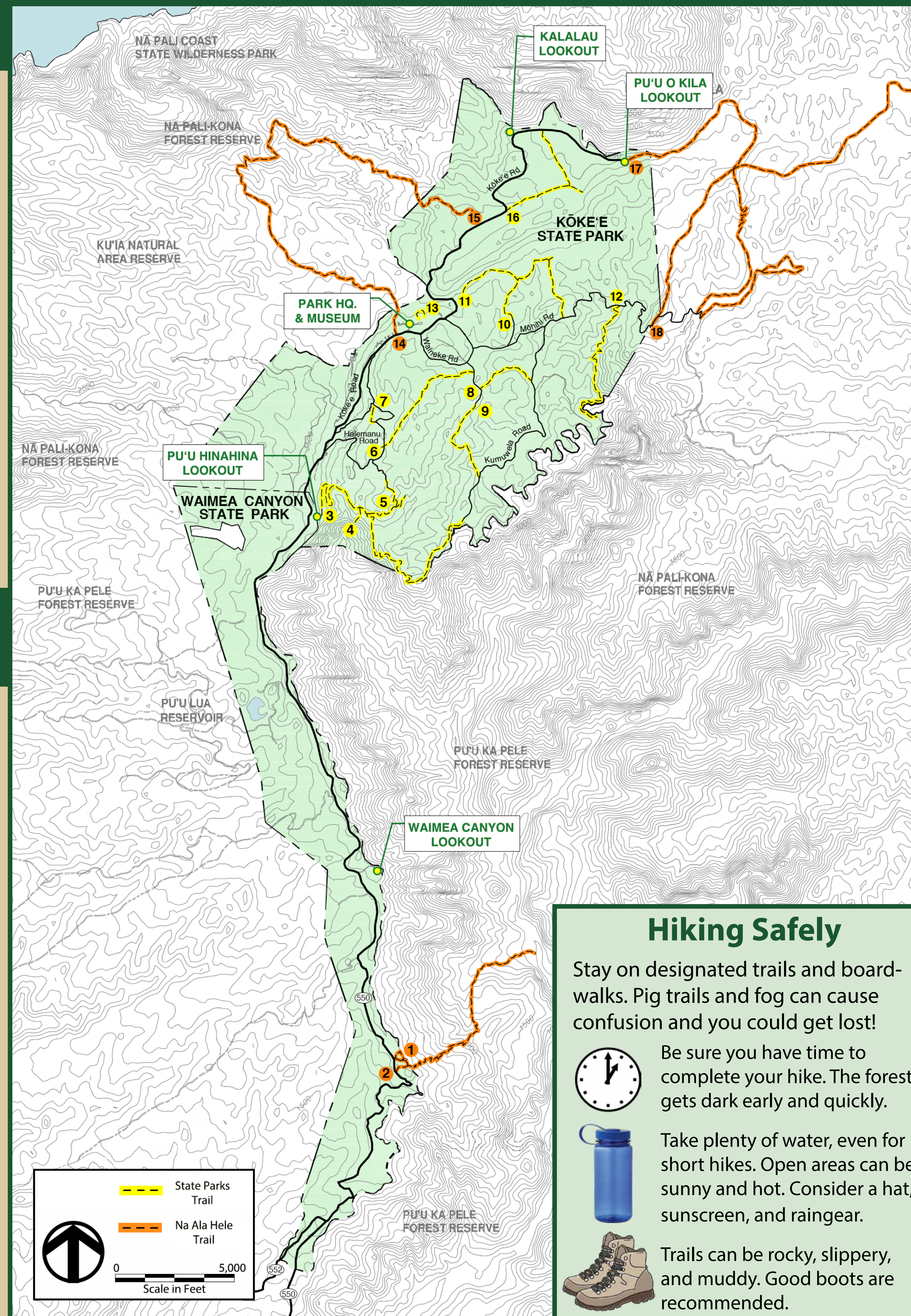
Trailhead: Just past Kalalau Lookout  
 Length: 1.6 miles / 2.6 kilometers  
 Description: Forest trail with easy grade. Can be a loop if you use the road but recommended to walk back on the trail.

## 17. Pihea Trail - DIFFICULT

Trailhead: Pu'u o Kila Lookout at end of Kōke'e Road  
 Length: 3.8 miles / 6.1 kilometers  
 Description: Slippery, muddy trail that can be dangerous. Views of Kalalau Valley before trail goes into forest and boardwalk to Alaka'i.

## 18. Alaka'i Swamp Trail - DIFFICULT

Trailhead: Mōhihi Road (~2.75 miles in from Kōke'e Road)  
 Length: 3.5 miles / 5.6 kilometers  
 Description: Boardwalk through alpine bog environment. Wet and muddy with mist and fog - stay on boardwalk. Forest birds & views.



# Kōke'e Trails

## 4. Cliff Trail - Easy

Trailhead: Halemanu Road at entry to Kōke'e State Park  
 Length: 0.1 mile / 0.16 kilometer (spur trail distance)  
 Description: Spur Trail off Canyon Trail with views of Waimea Canyon.

## 5. Black Pipe Trail - Easy to Moderate

Trailhead: Connects Canyon Trail and Halemanu Road  
 Length: 0.5 mile / 0.8 kilometer  
 Description: Part of the plantation ditch system and alternate route to the Canyon Trail. Open and sunny with many invasive plants.

## 6. Halemanu-Kōke'e Trail - Moderate

Trailhead: Pu'u Hinahina Lookout or Halemanu Road  
 Length: 1.2 miles / 1.9 kilometers  
 Description: Trail goes over ridge from Halemanu Valley to the Kōke'e Camp area and ends at Camp Sloggett off Mōhihi Road. Native trees.

## 7. Faye Trail - Easy

Trailhead: Faye Road  
 Length: 0.1 mile / 0.16 kilometer  
 Description: Provides access to other trails in Halemanu area.

## 8. Waininiua Trail - Easy

Trailhead: Waineke Road  
 Length: 0.6 mile / 1.0 kilometer  
 Description: Forest trail that is a shortcut to other trails. Ends at Kumuwela Road.

## 9. Kumuwela Trail - Moderate

Trailhead: Near end of Waineke Road  
 Length: 1.0 mile / 1.6 kilometers  
 Description: More of a hunter's trail that ends at Kumuwela Road and lookout. To the left of the lookout is the end of the Canyon Trail.

## 10. Pu'u ka 'Ōhelo / Berry Flat Trail - Easy

Trailhead: Mōhihi Road  
 Length: 0.6 mile / 1.0 kilometer  
 Description: Nature trail through groves of California redwood, Japanese sugi pine, and native koa and 'ōhi'a trees.

## 11. Water Tank Trail - Easy

Trailhead: Kōke'e Discovery Center  
 Length: 1.0 mile / 1.6 kilometers  
 Description: Connects Pu'u ka 'Ōhelo Trail and Kōke'e Road; forest.

## 12. Ditch Trail - DIFFICULT

Trailhead: Off Mōhihi Road  
 Length: 3.5 miles / 5.6 kilometers  
 Description: Poor condition; loose soil, drop-offs, and fallen trees.

## 13. Nature Trail - Easy

Trailhead: Behind Kōke'e Museum  
 Length: 0.2 mile / 0.3 km  
 Description: Loop trail with native forest plants and identification signs. Learn about the forest before going on longer hikes.



For more trail information, maps, and brochures, visit Kōke'e Natural History Museum and the Park Headquarters.



STATE OF HAWAII  
 Department of Land & Natural Resources  
 Division of State Parks and  
 Division of Forestry & Wildlife  
[www.dlnr.hawaii.gov](http://www.dlnr.hawaii.gov)

