

Ka'ena Point State Park, Mokulē'ia Section

Controlled Vehicle Access Area Designated Road Map



- Road conditions may change due to coastal erosion—vehicle access routes may be unstable—assess roads carefully and drive with caution.
- Please respect efforts to reduce damage to the Ka'ena landscape and shoreline. Follow all sign notices.
- Help keep the park safe, clean, free of trash and quiet for all users.
- Drive only on designated roads. Off-roading increases erosion and runoff into the ocean.
- Must keep permit decal attached to rear of vehicle. Always have printed permit in vehicle.
- Only designated drivers can operate vehicles.
- Check for gate closures before heading out at the following link/QR code: <https://dlnr.hawaii.gov/dsp/parks/oahu/kaena-point-state-park/>



Park Hours: Park Closed from 7:00pm to 6:00am. Vehicle Permit holders are allowed to drive from Dillingham Airfield entry to combination gate and back during closed hours.

Reminder: Follow State Parks Administrative Rules and Permit Conditions. Permits can be revoked.

Report Violations: (808) 643-DLNR or on the DLNRTipApp



NO Off-Roading



NO Tent Camping



NO Drones /
NO Drone Fishing



NO Smoking



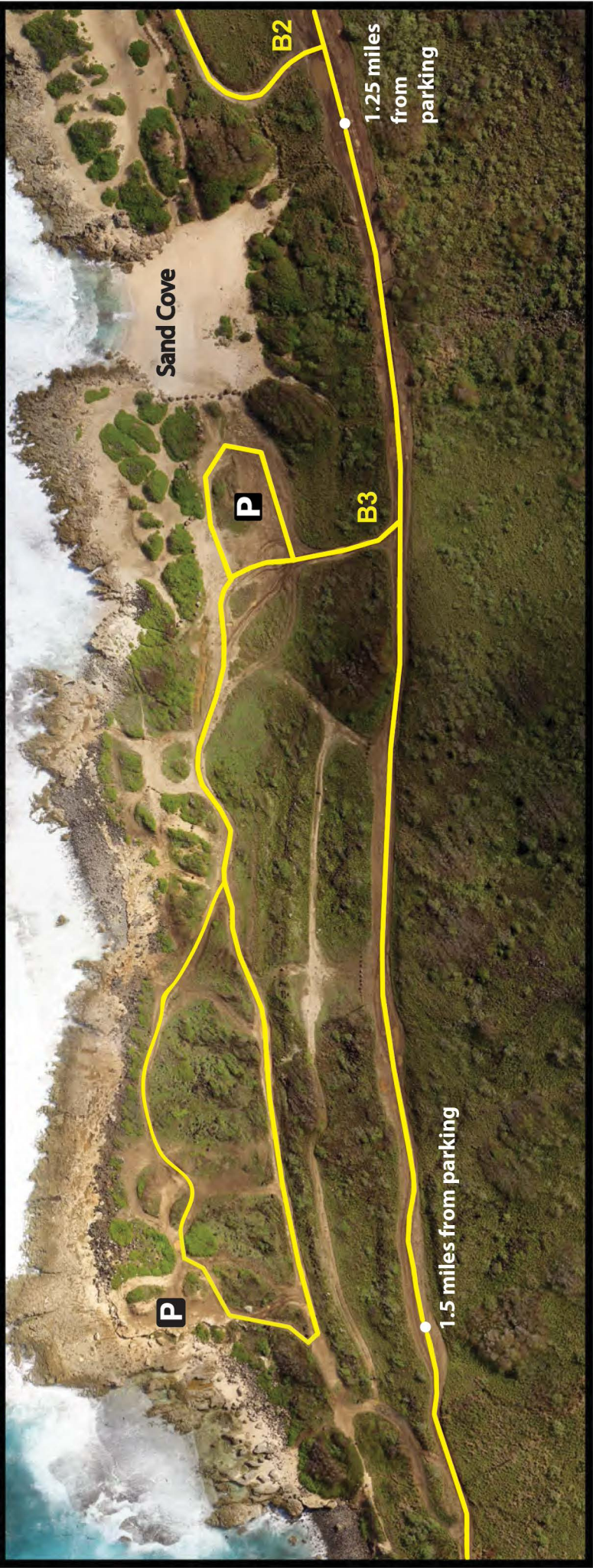
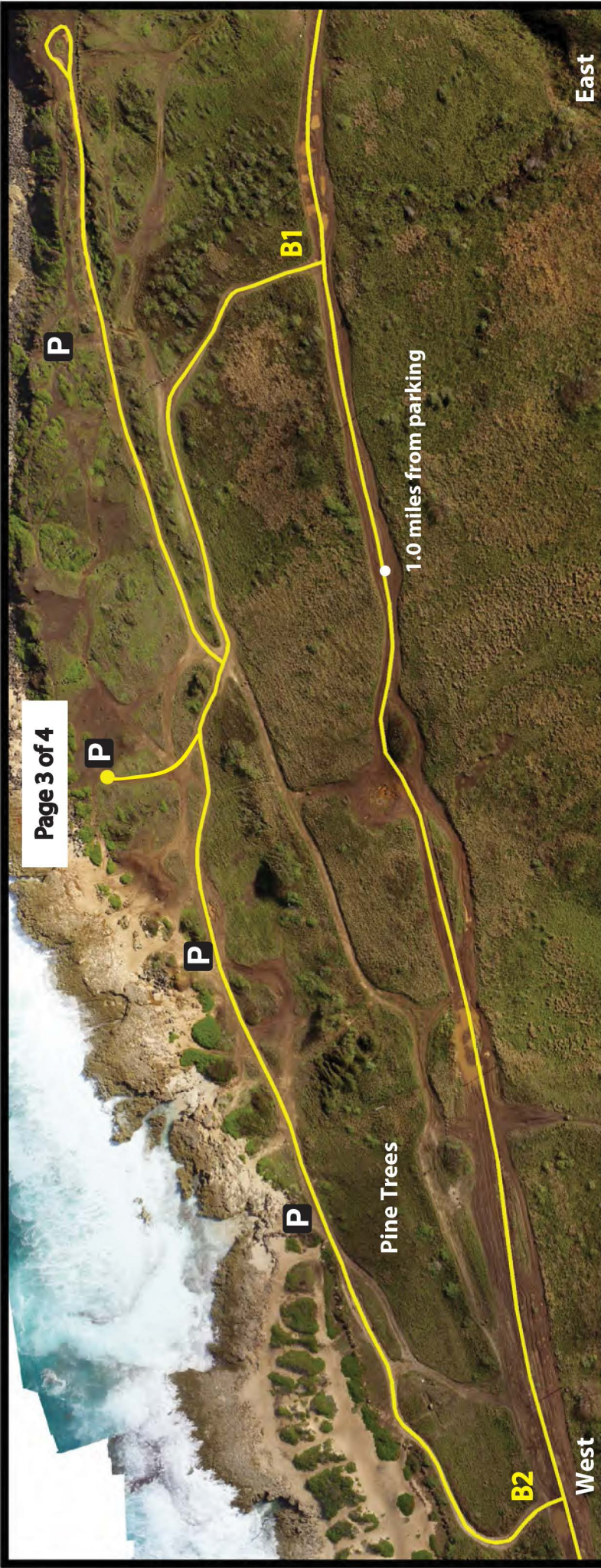
NO Pets



NO Ground Fires







The Ponds

Alau

Alau Gulch

East

West

P

P

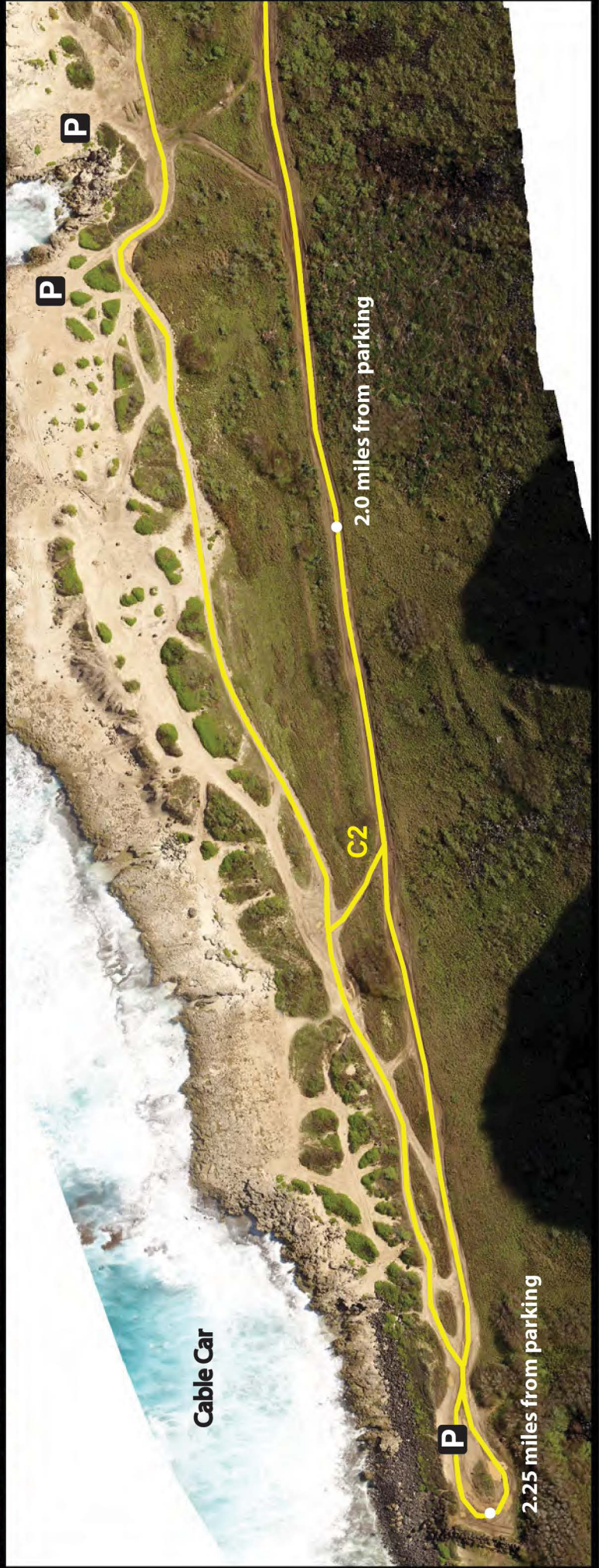
P

P

P

C1

1.75 miles from parking



Cable Car

2.0 miles from parking

C2

P

2.25 miles from parking

P

P

P