



Photo: Air Maui

FORESTS CAPTURE MIST AND RAIN SUPPLYING HAWAII'S FRESH WATER



Replenishing water through watershed restoration and protection

Benefits of Forest Protection

- **Freshwater** – maximize water capture and storage
- **Plants and Wildlife** – protect species unique to Hawai'i
- **Coral Reefs** – reduce erosion that muddies fisheries
- **Hawaiian Culture** – upland forests are the storied wao akua
- **Reduce Greenhouse Gas Emissions** – trees store carbon
- **Green Jobs** – connect residents with the land that sustains them

Potential for Partnership

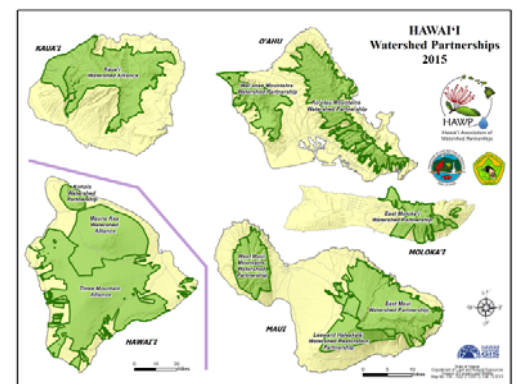
Protecting watershed forests offers a variety of collaboration possibilities: contributing to the statewide sustainability initiative financially, creating public awareness of corporate engagement for Hawai'i's natural resources, contributing staff involvement through volunteer events, offsetting the partner's carbon emissions through the acquisition of offset credits, etc.

Example Project: The Waiawa Watershed

The Waiawa Watershed System (WWS) project will provide long-term benefits to Oahu water supplies by building a pig-proof fence and removing invasive pigs and weeds in the native forest of Waiawa. Hawai'i's Board of Water Supply priority 1 area, identified as both a "potentially high recharge" and "potentially high production/high chloride" watershed. for ground water recharge as well as its value as habitat for native plants and animals.

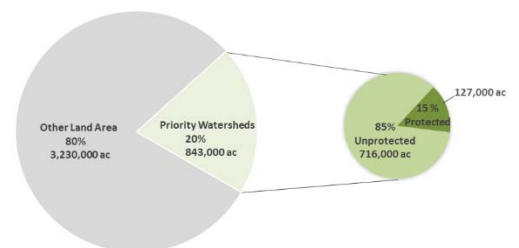
The WWS currently delivers about **6.5 million gallons per day of water** to approximately 5,600 acres of land on central Oahu. The system services about a dozen major water users and up to 50-60 smaller individual farms. It is estimated that the farming operations that use WWS water collectively generate an agricultural production value of approximately \$175 million per year and employ about 2,000 individuals.

The upslope portion is one of the best remaining native forests in Oahu that is occupied by extremely rare plants and is critical habitat for many listed plants and animals.



Hawaii's Watershed Partnerships

10 active Watershed Partnerships covering 2.2 million acres – roughly half the land in the entire state.



The Goal: Protecting 15% of Hawaii's Priority Watersheds

