



KAULUNANI

Urban & Community Forestry Program Community Grants

www.kaulunani.org

Aloha!

Heather McMillen, Ph.D.

Kaulunani Program Coordinator

Urban and Community Forester

heather.l.mcmillen@hawaii.gov

(808) 286-7218

www.Kaulunani.org



Aloha!

Jolie Dollar

Project Consultant

Smart Trees Pacific

jdollar@smarttreespacific.org

www.smarttreespacific.org



Poll Time!





Agenda

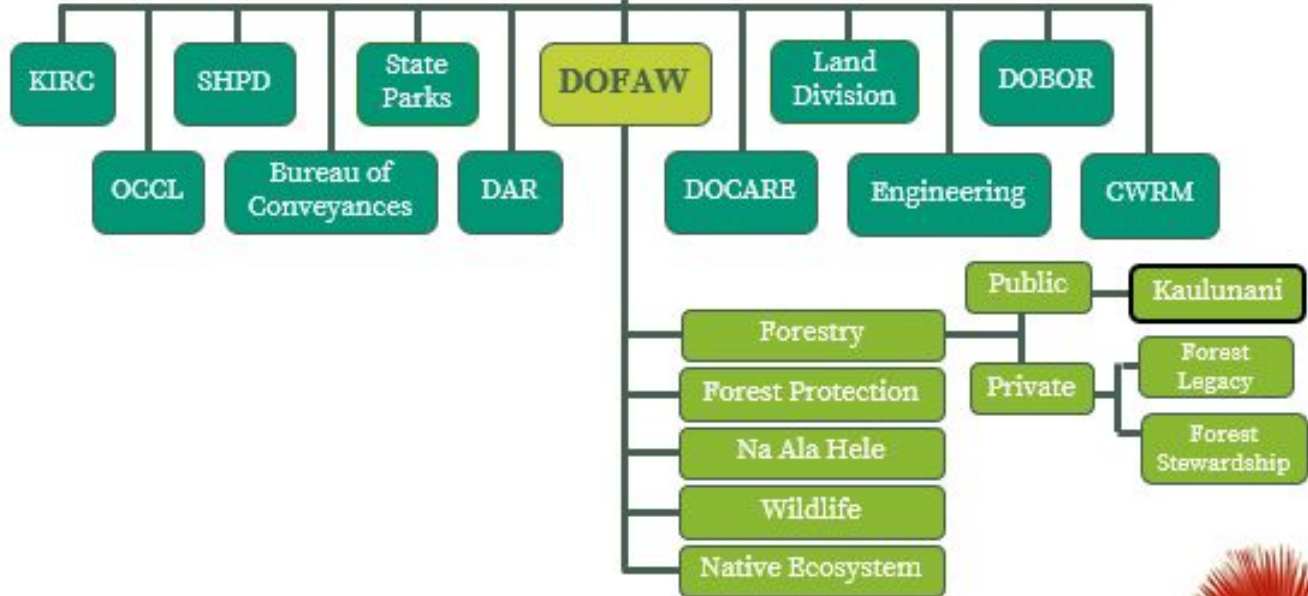
1. About Kaulunani UCF Program
2. Details on How to Apply for Funding
3. Resources for Applicants
4. Question and Answer Period



1. Kaulunani Urban & Community Forestry Program

Board of Land and Natural Resources

Department of Land and Natural Resources





Kaulunani UCF Program

- Federal & State Support
- Since 1992 has given over \$1.8M for hundreds of community cost-share grants - **to people like you!**
- Advisory Council





Kaulunani Programs

- Grants Program
- Educational & Technical Resources
- Citizen Forester Program
- Arbor Day Hawai'i
 - www.ArborDayHawaii.org
- Tree City & Tree Campus USA
- Stewardship Mapping & Assessment Project
 - www.stewmaphawaii.net

Program Goals

- Improve **understanding** of benefits of trees
- Increase **tree canopy** cover
- Increase **benefits** from trees
- Support **tree planting** demo projects
- Support **Arbor Day** activities
- Enhance industry **technical skills** and knowledge





“

“Someone is sitting in the shade today because someone planted a tree a long time ago.” - Warren Buffett





2. Community Cost-Share Grant Program



Purpose of Grant Program

One

Help State achieve its Forest Action Plan objectives.

Two

Support urban and community forestry efforts statewide.





Forest Action Plan Objectives

Climate
Change

Education &
Outreach

Health &
Wellbeing

Green
Infrastructure

Wildland Urban
Interface

Invasive
Species

Emergency
Mgmt

Urban Tree
Care





Available Funding

- \$40,000 available for FY-2021

Deadlines on a quarterly basis:

- **May 1st** (prioritized)
- August 1st,
- November 1st,
- February 1st (Arbor Day)



Who Can Apply?

Organization:

- Non-federal entities operating within the State of Hawai'i. Nonprofit status not required.

Project:

- New idea to achieve UCF program objectives!



Not Eligible for Funding

- Property acquisition and related costs
- Tree removal
- Projects on property **inaccessible to** public
- Equipment (computers, printers, typewriters, cameras, phones, fax machines, structures)
- **Food and refreshments**
- **Salaries and wages** (administrative funds, overhead, salaries or wages are typically not supported but can be **used as match**.)

**contractual services for work needed to implement the project may be included.*



Grant Levels

ʻIlima

- Up to \$2,499

Māmaki

- \$2,500 to \$14,999
- *HCE required

ʻUlu

- Over \$15,000

*HCE stands for Hawaii Compliance Express. We can assist you if your organization is not a registered vendor with the State of Hawaii.



Grant Categories

I. Urban & Community Forestry Technology Tools

- *Aloha Arborist Assoc. BMPs for Tree Care near Manu O Ku Nesting Sites*

II. Urban Forestry Professional Training

- *Trees For Honolulu's Future Conference*

III. Education & Public Outreach

- *Ohia Love Festival & Arbor Day Events*
- *Some grant funds are allocated for Arbor Day each year*

IV. Demonstration Tree Planting

- *"Garden of Eden" Wellness Pathway*

Planning a Demonstration Tree Planting Project



- Who to involve?
 - Landowner permission, maintenance plan, arborist
- Where to plant?
 - Site map, publicly accessible
- What to plant?
 - Species, Weed Risk Assessment
- How to plant?
 - Volunteers, community groups
- How much?
 - Nursery bids, cost of maintenance, supplies needed

Review all requirements for proposals on Kaulunani website



Suggestions for Projects to Stand Out



Volunteers



Partnerships



Diversity



Community
Need



Builds Capacity



Visibility



Requires 1 to 1 Non-Federal Match

- Every grant dollar must be matched
- Volunteer hour = \$26.87 (2020)
 - professional - market rate
 - equipment used - rental rate
- Cash donation
- Material donation - fair market rate

Ex. Grant request: \$5,000 Match: \$5,000

Documenting Match In Your Proposal

- Letters from partners to show commitment to provide match
- In-kind
- Cash
- Match from other federal grants is ineligible
- Tree maintenance during grant year may be used as match

Steps for Getting Your Proposal Ready

Step 1

Check the
deadlines



Step 2

Review the
Grant Guidelines



Step 3

Know your
application level
and download the
form



Step 4

Download the
budget form



Other

Contact staff for a
consultation at
any point

Annual Deadlines: Feb 1, May 1, Aug 1, Nov 1

What to Expect

Grant Process Timeline

May 1

Application submitted via e-mail* to Heather AND Jolie



May 15

Council votes on applications.



End of May

Applicants notified.



+

4 weeks

Grant paperwork mailed out to applicant. DOFAW procurement process begins.



June 30, 2021

Project funds must be fully expended. **All payments will then be made as reimbursements.**

Annual Deadlines: Feb 1, May 1, Aug 1, Nov 1

* Mail submission is also allowed under certain circumstances.



How Reimbursements Work

Submit an invoice with itemized expenses and receipts.

Submit documentation of match, such as volunteer hour sheets.

Final reports are required using the form provided.



Available Resources: www.Kaulunani.org

- [Guiding Document: Forest Action Plan](#)
- [Meet the Kaulunani Council](#)
- [Funded Projects Spotlights](#)
- [Grant Information](#)
 - Guidelines
 - Sample applications
 - Application forms
 - Budget form
 - Application Evaluation Form
 - Resources for current grantees

Commonly Asked Reviewer Questions



- Advance FAP objectives?
- Do they make an effort to maximize educational benefit?
- Are funds requested reasonable and relevant?
- Have plants been screened via Weed Risk Assessment ? Are 70% trees?
- Partner/matching commitment letters?



“ *The best time to plant a tree
was 20 years ago. But the
second best time is today.*

- Chinese Proverb



Trees Make
Communities
More Livable

Mahalo!

Grant Questions and Assistance:

Jolie Dollar

Project Consultant

Smart Trees Pacific

jdollar@smarttreespacific.org

ANY
QUESTIONS?

Kaulunani Urban & Community Forestry Program is funded by the State and Private Forestry branch of the U.S.D.A. Forest Service, Region 5 and by the Hawaii Department of Land and Natural Resources (DLNR) Division of Forestry and Wildlife. The Program is managed in collaboration with the non-profit organization Smart Trees Pacific. This work is being funded entirely or in part by the Kaulunani Urban and Community Forestry Program of the DLNR Division of Forestry and Wildlife. U.S.D.A. Forest Service is an equal opportunity provider.

