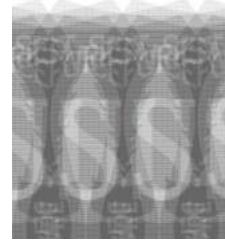
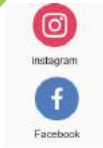


Follow Us!
@kaulunani



KAULUNANI

Urban & Community Forestry Program Community Grants

www.kaulunani.org
info@kaulunani.org

Quick Poll



Aloha!

Heather McMillen, Ph.D.

Kaulunani Program Coordinator

Urban and Community Forester

heather.l.mcmillen@hawaii.gov

(808) 286-7218

www.Kaulunani.org



Aloha!

Kate Wiechmann

Project Consultant

Smart Trees Pacific

kwiechmann@smarttreespacific.org

www.smarttreespacific.org





Agenda

1. Kaulunani UCF Program
2. Arbor Day 2021 Call for Proposals
3. Resources for Applicants
4. Question and Answer time

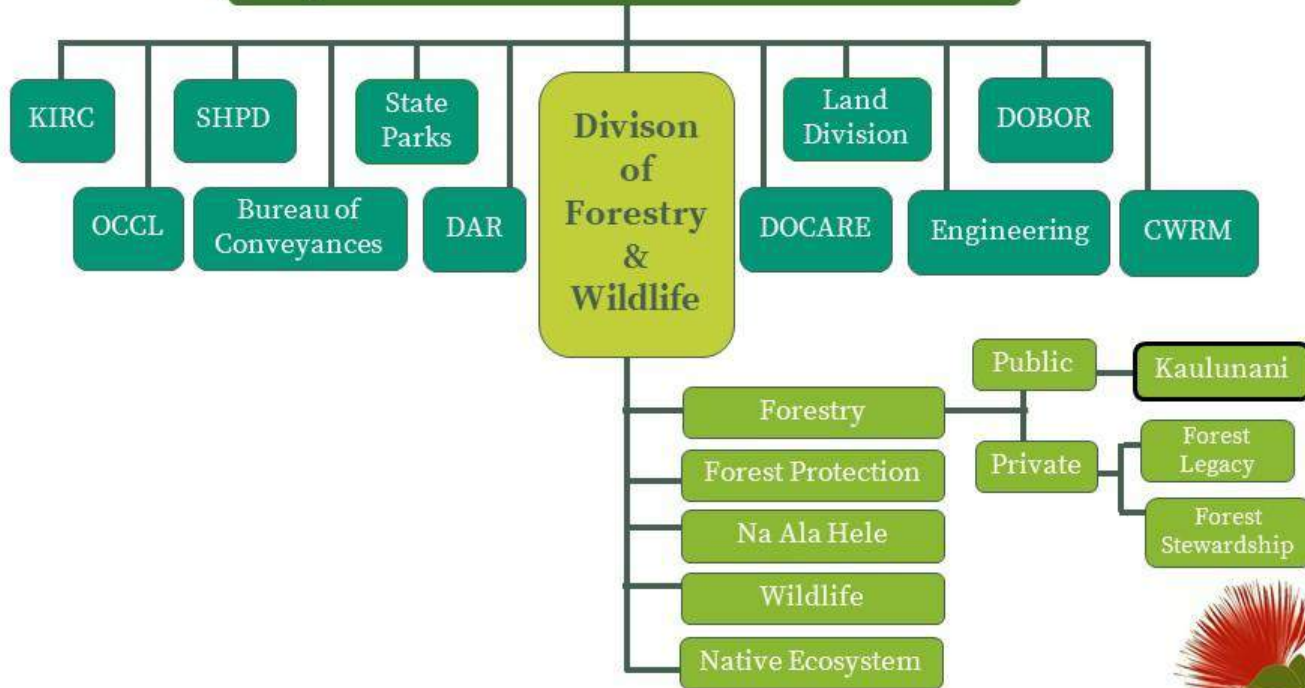


1. Kaulunani Urban & Community Forestry Program



Board of Land and Natural Resources

Department of Land and Natural Resources





Kaulunani UCF Program

- Federal & State Support
- Since 1992 has given over \$3.6M for hundreds of community cost-share grants - **to people like you!**
- Advisory Council



A decorative graphic on the left side of the slide. It features a large, dark green leaf with a lighter green vein, a smaller light green leaf, and a small dark green leaf. There are also several light blue circles of different sizes scattered around the leaves.

Mission

The mission of Kaulunani is to support all of Hawaii's communities to cultivate wellbeing and resilience through planting, caring for and growing relationships with the trees and forests that we live with and that are crucial to the ecosystems on which we rely. We do this for our keiki, our kūpuna, ourselves, our 'āina and everyone's future.

Program Goals

- Improve **understanding** of benefits of trees
- Increase **tree canopy** cover
- Increase **benefits** from trees
- Support **tree planting** projects
- Support **Arbor Day** activities
- Enhance industry **technical skills** and knowledge





2. Arbor Day Community Cost-Share Grant Program

Arbor Day Hawaii History



Source: Historic Hawai'i Foundation, McKinley High School



Arbor Day Hawaii 2020!



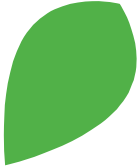
Photos by
Brian Lieberman, Emily
Perry, Evy Brown,
Kaulunani



Purpose of the Grant Program

To encourage community involvement in creating and supporting long-term and sustained urban and community forestry programs across Hawai'i.

Kaulunani believes community-driven solutions are a vital part in addressing the Forest Action Plan (FAP) Objectives.





Forest Action Plan Objectives

Climate
Change

Education &
Outreach

Health &
Wellbeing

Green
Infrastructure

Wildland Urban
Interface

Invasive
Species

Emergency
Mgmt

Urban Tree
Care



Arbor Day 2021



- ★ Trees Promote Community Health & Well-being
- ★ Let's Celebrate & Spread the Word!
- ★ Be Adaptive & Innovative
- ★ Reach New Audiences
- ★ Projects that Track & Report Outcomes Stand Out!

How might your project amplify this link between trees and health and spread the word?

How will you celebrate trees with your community?



Available Funding

- \$28,000 in total, available for Arbor Day 2021 projects
- Award amounts are between \$500 and \$5000 (and anything in between, it does not have to be either \$500 or \$5000)



New Online Application!

- New Online application process! Go to Kaulunani.org
- You can download a example application to see the requirements in advance
- Ability to start, save, return later
- Upload all required documentation & submit online!



Requires 1 to 1 Non-Federal Match

- Every grant dollar must be matched
 - Eg. Grant request: \$2,000 = Match: \$2,000 (at least)
- Volunteer hourly rate = \$26.87 (2020)
 - professional - market rate
 - equipment used - rental rate
- Cash donations/other grants
- Material donation - fair market rate



Who Can Apply?

- **Organization:** Non-federal entities operating within the State of Hawai'i. Nonprofit status not required.
- Current active Kaulunani grantees are not eligible to apply
- **Location:** Actively seeking to support projects across all Islands



Not Eligible for Funding

- Property acquisition and related costs
- Tree removal
- Projects on property **inaccessible to** public
- Equipment (computers, printers, typewriters, cameras, phones, fax machines, structures)
- **Food and refreshments**
- **Salaries and wages** (administrative funds, overhead, salaries or wages are typically not supported but can be **used as match**.)
 - ***contractual services** for work needed to implement the project **may be included**.

Thinking about a Tree Planting Project?



- Who to involve?
 - Landowner permission, maintenance plan
- Where to plant?
 - Site map, publicly accessible
- What to plant?
 - Species, Weed Risk Assessment
- How to plant?
 - Volunteers, community groups
- How much?
 - Nursery bid (one, in writing), supplies needed, cost of maintenance

Review all requirements for proposals on Kaulunani website



Suggestions for Projects to Stand Out



Volunteers



Partnerships



Diversity



Community
Need



Builds Capacity



Impact

What to Expect

Grant Process Timeline

February 4

Application submitted online



February 18

Council votes on applications, submits recommendation to the State Forester



February 22 - 26

Applicants notified



+ 4 - 6 weeks

Grant paperwork emailed to applicant (including esign). DOFAW procurement process begins.



December 31, 2021

Project funds must be fully expended.
All payments are made as reimbursements.



Available Resources: www.Kaulunani.org

- [Guiding Document: Forest Action Plan](#)
- [Funded Projects Spotlights](#)
- [StoryMap](#)
- [ArborDayHawaii.org](#)
- [Grant Information](#)
 - Guidelines
 - Sample applications
 - Application Evaluation Form
 - Resources for current grantees



Questions?



Further questions and assistance:

Kate Wiechmann

kwiechmann@smarttreespacific.org

Follow Us! @kaulunani

www.kaulunani.org



Mahalo!



Thank you for supporting our community forests



Kaulunani Urban & Community Forestry Program is funded by the State and Private Forestry branch of the U.S.D.A. Forest Service, Region 5 and by the Hawaii Department of Land and Natural Resources (DLNR) Division of Forestry and Wildlife. The Program is managed in collaboration with the non-profit organization Smart Trees Pacific. This work is being funded entirely or in part by the Kaulunani Urban and Community Forestry Program of the DLNR Division of Forestry and Wildlife. U.S.D.A. Forest Service is an equal opportunity provider.