

How could your organization best utilize a **\$30k – \$300k grant** over **three years** to build equitable access, engagement, and relationships with urban and community forests?

## STATE IRA WEBINAR: Information for Applicants



**website.** [www.kaulunani.org](http://www.kaulunani.org)  
**email.** [info@kaulunani.org](mailto:info@kaulunani.org)  
**instagram.** [@kaulunani](https://www.instagram.com/kaulunani)

# KAULUNANI IRA: Information for Applicants

Online  
September 12th, 2023  
12 – 1 PM HST

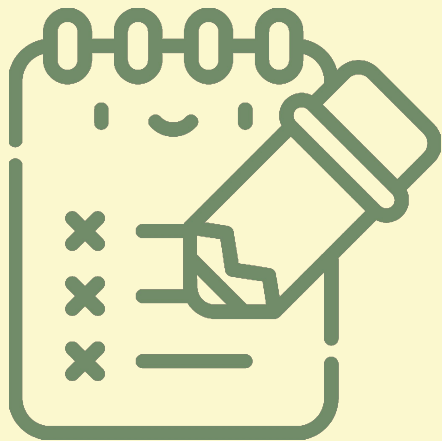


Carving Out Our Future kālai workshop with Nalu Andrade,  
@ Ho'oulu 'Āina, 2023

**w.** [www.kaulunani.org](http://www.kaulunani.org) **e.** [info@kaulunani.org](mailto:info@kaulunani.org) **ig.** [@kaulunani](https://www.instagram.com/kaulunani) **nl.** [‘ulu bites](#)



# AGENDA



**12:00 pm**    **Introduction to Kaulunani**

**12:15 pm**    **IRA Timeline**

**12:25 pm**    **Eligibility Requirements**

**12:45 pm**    **Tips for Applying**

**12:50 am**    **Questions**

**1:00pm**    **Pau**

# ORGANIZATIONAL STRUCTURE



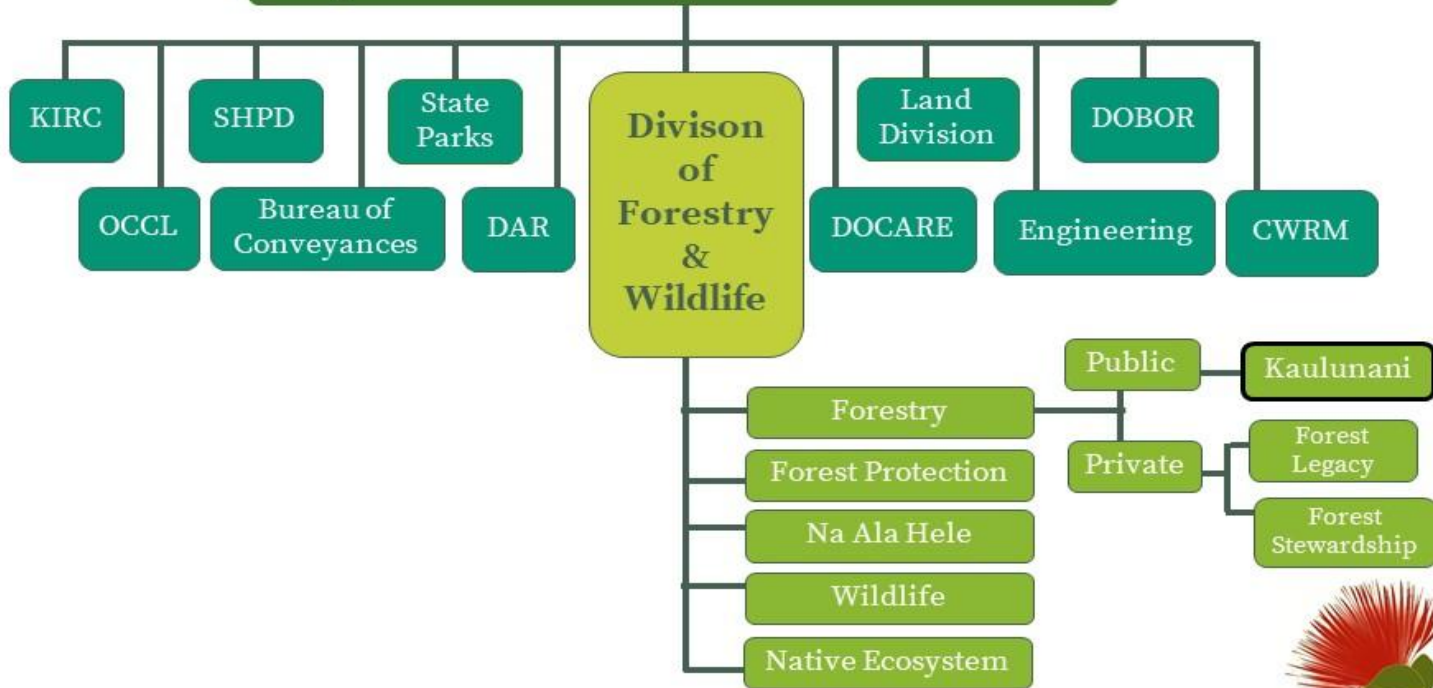
**KAULUNANI**  
urban & community  
**FORESTRY  
PROGRAM.**





# Board of Land and Natural Resources

## Department of Land and Natural Resources





## HEATHER McMILLEN

*Kaulunani Program Coordinator*



## MIRANDA HUTTEN

*UCF Program Manager, Region  
5 State and Private Forestry,  
USDA Forest Service*



## KOKI ATCHESON

*IRA Community Partnerships  
Coordinator*



## KATE WIECHMANN

*Partnerships Coordinator*





# OUR TEAM

## HEATHER McMILLEN

### *Program Coordinator*

- Guides Kaulunani activities and projects
- Liaises with Miranda Hutten, UCF Region 5 Manager

**Email:** [heather.l.mcmillen@hawaii.gov](mailto:heather.l.mcmillen@hawaii.gov)





# OUR TEAM

## KOKI ATCHESON

### *IRA Community Partnerships Coordinator*

- Consult council and staff to develop competitive process for this new funding opportunity
- Support IRA grantees from application to report submittal

**Email:** [koki.b.atcheson.researcher@hawaii.gov](mailto:koki.b.atcheson.researcher@hawaii.gov)







# MISSION

Our mission is to support all of Hawai'i's communities with a focus on equity to cultivate well-being and resilience through restorative & environmental justice, planting, caring for, and growing relationships with the trees and forests where we live, work, learn and play.





# WHAT IS AN URBAN FOREST?



Trees on Private Property



Street Trees



Urban Park



Campus Trees



Rain Garden



Pocket Park



# Urban and **COMMUNITY** forestry







# EQUITY & JUSTICE STATEMENT

We recognize our mission is best fulfilled through engaging people of diverse backgrounds, beliefs, experiences and cultures with a focus on our underserved and low-income communities as well as Native Hawaiians.

**Full statement is available here**



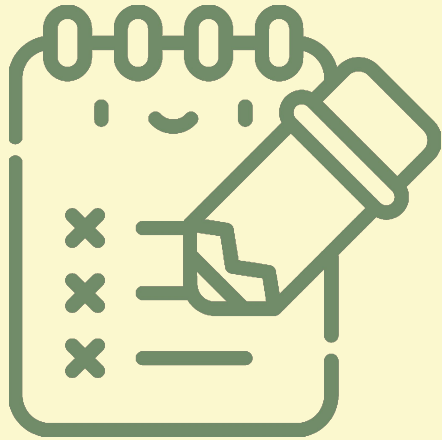


# ADVISORY COUNCIL



- 16 members from O‘ahu, Maui, Kaua‘i & Hawai‘i Island (some pictured)
- Three year term
- Representing local government, academia, community & business
- Provides recommendations, direction & strategic guidance
- Learn more [on our website](#)

# AGENDA



**12:00 pm**    **Introduction to Kaulunani**

**12:15 pm**    **IRA Overview & Timeline to Apply**

**12:25 pm**    **Eligibility Requirements**

**12:45 pm**    **Tips for Applying**

**12:50 pm**    **Questions**

**1:00pm**    **Pau**

# Kaulunani IRA – Flow of \$



## STATE IRA AWARDEES

**Inflation Reduction Act** (IRA) enables US Forest Service to allocate funding to **State** Urban and Community Forestry projects

**Kaulunani** received \$1.5 million and will competitively sub-award **\$1.2 million in funding to community projects** in Hawai'i.

Eligible projects **apply** to Kaulunani for IRA funding.

# DIRECT FEDERAL IRA – “NOFO”



**COMMUNITY ORG,  
STATE or LOCAL AGENCY**

- **Notice of Funding Opportunity (NOFO)** for direct funding from Forest Service deadline has passed (June 1).
- Kaulunani applied for this opportunity as well.
- Decisions to be announced by the federal government.
- Cannot receive a direct federal IRA award AND a Kaulunani IRA award.



# **STATE IRA AWARDEES**

- Eligibility
- Timeline & Process
- Tips for applying

# AVAILABLE FUNDING

**\$1.2 M**

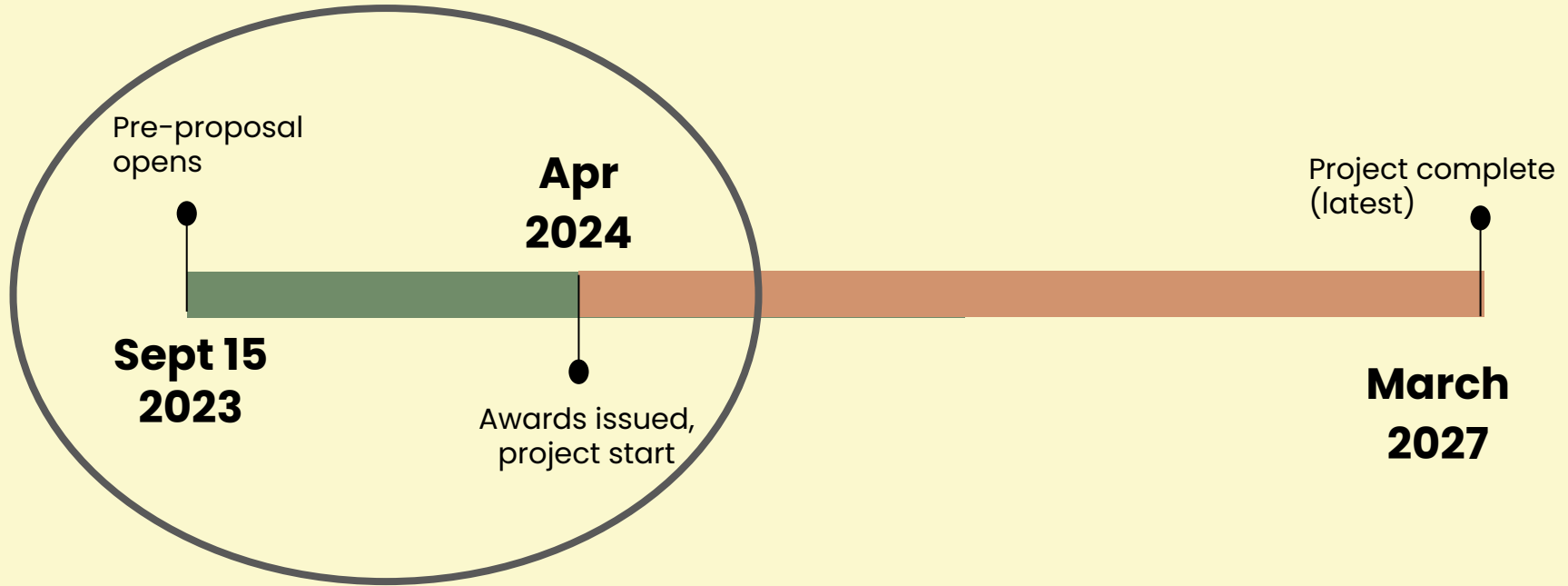
Awarded to **6-12 projects**

Each award = **\$30k - \$300k**

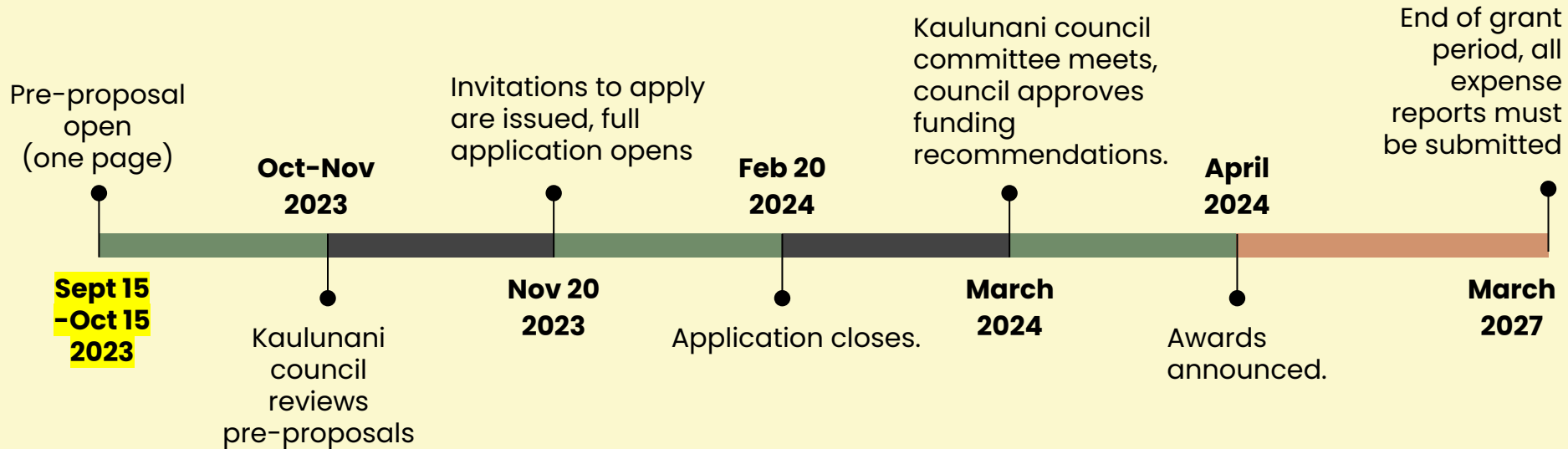
Project period: **4/1/2024 - 3/31/2027**



# TIMELINE



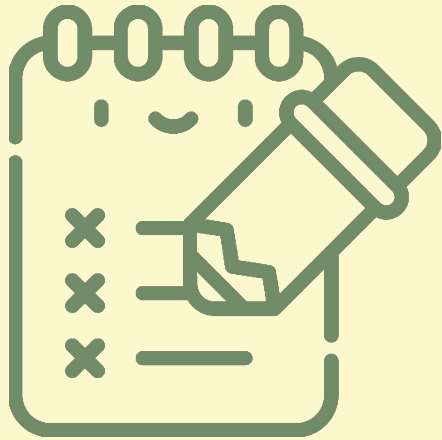
# NEW TWO-STEP APPLICATION PROCESS



**OCT. 15**

**PRE-PROPOSAL DUE**

# AGENDA



**12:00 pm    Introduction to Kaulunani**

**12:15 pm    IRA Timeline**

**12:25 pm    Eligibility Requirements**

**12:45 pm    Tips for Applying**

**12:50 pm    Questions**

**1:00pm      Pau**

# ELIGIBILITY – APPLICANTS (part 1)

- **Must fill out a pre-proposal**
- **Organization:** Non-federal entities operating within Hawai'i. 501(c)(3) status not required. For-profit organizations may partner with eligible entity.
  - Partnerships are encouraged!

## ELIGIBILITY – APPLICANTS (part 2)

- Registration with **Hawai'i Compliance Express** and current HCE certification is required to receive funding.
- This is a **reimbursement** program. Limited access for start-up funds. Contact staff
- **Location:** Must be in a priority community\*

# ELIGIBILITY – PROJECTS (part 1)

- New initiative, aligned with purposes of [RFP](#)
  - Build capacity
  - Advance equity and justice
  - Build partnerships and community involvement
- No match requirement
- Aligned with [Forest Action Plan](#)



# ELIGIBILITY – PROJECTS (part 2)

- urban forestry strategic or management plan.
- tree ordinance development/revision.
- public outreach and education.
- monitoring or technology transfer.
- staff or volunteer training.
- tree board or volunteer group development.
- tree planting and maintenance.
- site prep including invasive species removal, pavement removal, or deconstruction (when directly related to tree planting).

# ELIGIBLE EXPENSES



Tree seedlings/  
saplings



Supplies,  
tools (must  
be <\$5k per  
item)



Print &  
digital  
outreach  
materials,  
“tech  
transfer”



Maintain /  
monitor  
trees



Staff &  
contractor  
costs  
(admin ok  
up to 20%)



Invasive  
species  
removal  
(<10%)

# INELIGIBLE EXPENSES



Property acquisition



Projects on property inaccessible to public



Equipment

Ok if directly related to tree planting



Food and refreshments



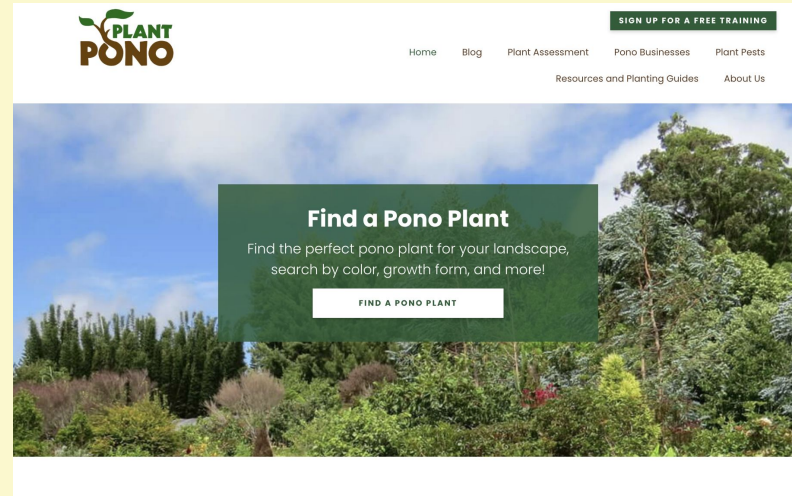
Construction projects



Land clearing, stump removal

# TREE PLANTING PROJECTS REQUIRE:

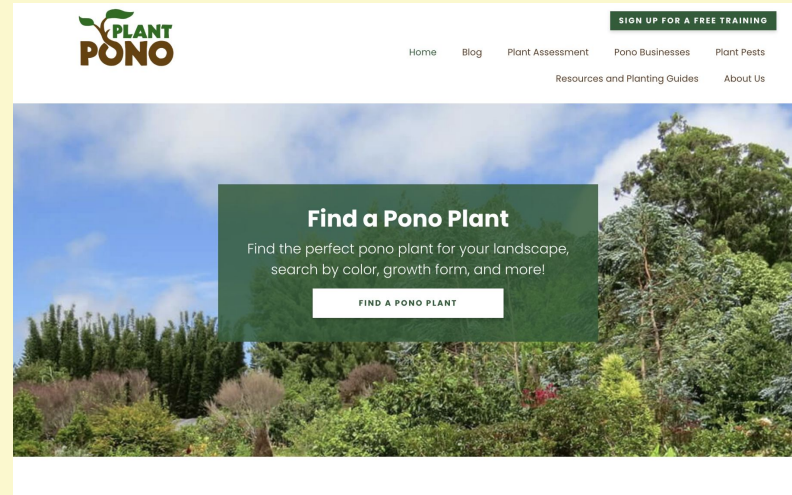
- ❑ Landowner permission
- ❑ Maintenance plan
- ❑ Site map
- ❑ Species list (with weed risk assessment scores from Plant Pono)
- ❑ Nursery bid, supplies needed, maintenance cost



plantpono.org

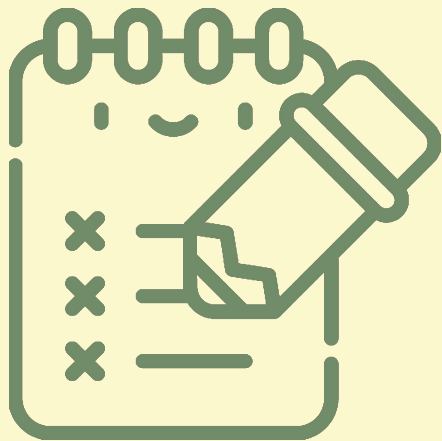
# TREE DISTRIBUTION PROJECTS REQUIRE:

- ❑ Species list (with weed risk assessment scores from Plant Pono)
- ❑ Nursery bid, supplies needed, maintenance cost
- ❑ Plans for long term care of adopted trees (encouraged)



plantpono.org

# AGENDA



**12:00 pm**    **Introduction to Kaulunani**

**12:15 pm**    **IRA Timeline**

**12:25 pm**    **Eligibility Requirements**

**12:45 pm**    **Tips for Applying**

**12:50 pm**    **Questions**

**1:00pm**    **Pau**



# REPORTING REQUIREMENTS

- ❑ Due twice a year until project completion
- ❑ Include:
  - ❑ Receipts, explanation of expenditures, photos
  - ❑ # of volunteers; # of volunteer hours
  - ❑ Accomplishments in relation to proposed deliverables(narrative)





# TIPS FOR APPLYING (RUBRIC)

**The criteria for reviewing and scoring pre-proposals will be (points):**

- **Alignment (10):** Degree to which project is aligned funding priorities, Kaulunani program goals with Hawai'i Forest Action Plan criteria.
- **Partnerships (10):** Degree to which project involves appropriate partners and collaborators.
- **Clarity (5):** Purpose and objectives of the project are clearly defined.
- **Readiness (5):** Long-term history of work in the site and with the beneficiary community; may be substituted by expertise in the project area
- **Location (5):** Degree to which project takes place in communities that represent one or more priorities (Tree Canopy Viewer IRA button).

# TIPS FOR APPLYING (RUBRIC)

In addition to re-evaluating pre-proposal criteria, full proposals will also be reviewed and scored on the following (points):

- **Budget (10):** Budget and timeline are reasonable, accurate, and clearly presented
- **Assessment (5):** Plan to assess project success is developed.
- **Relationship to IRA priority layers (5):** Relationships of project to priorities are well-thought out, integral to the project, and well-described.

# REFERENCE

- Examples  
([StoryMap](#))  
([Currently Funded](#))
- [Grant Program Webpage](#)



## INFLATION REDUCTION ACT

### HAWAI'I IRA FUNDING INFO

Kaulunani has been awarded **\$1.5 million in IRA funding** and will sub-grant 80% of this to **community partners**, while the remaining 20% will be used for program support.

**Sub-grant details and process will be coming soon.** To share more information about the Community Partnership Grant, we will hold a webinar (with Q&A) on Tuesday, September 12th between 12pm – 1pm on Zoom. You may register for the webinar at [this link](#). To stay updated about IRA funding opportunities, please follow us on [Instagram](#) and [Facebook](#) or [sign up for our eNewsletter](#).

For more information and questions about IRA funding, please contact Heather McMillen at [heather.j.mcmillen@hawaii.gov](mailto:heather.j.mcmillen@hawaii.gov).

[Kaulunani IRA Request for Proposals \(RFP\)](#)  
[Register for Hawai'i IRA Launch Webinar \(9/12/2023\)](#)

Blank Pre-proposal Application (PDF) ([Submit here by 10/15/2023](#))  
Blank Proposal Application (PDF) ([If invited, submit here by 2/20/2024](#))

[RECORDING OF HAWAI'I IRA BRIEFING](#)  
[Slideshow from Hawai'i IRA Briefing](#)

### LANDOWNER ASSISTANCE PROGRAMS

- LAP Overview
- Forest Stewardship Program
- Forest Legacy Program
- Kaulunani Urban and Community Forestry Program
- Safe Harbor Agreements
- Watershed Partnership Program
- Natural Area Partnership Program
- Community Forest Program

### PDF DOCUMENTS

The documents and maps available on this site are in Adobe Acrobat PDF format. To view them, download Adobe's free Acrobat Reader by [clicking here](#).



# TREE CANOPY VIEWER HAWAI'I

## IRA Priority Layers



- **Statewide, all land use types**
- **Canopy data**
  - Radar 1-meter resolution
  - MAXAR VIVID & LiDAR Imagery 2013-2020
  - Available for download
- **Socio-demographic and health data**



# TREE CANOPY VIEWER



<https://tinyurl.com/TreeCanopyViewer>

show/hide  
layers

The screenshot displays the 'Urban Tree Canopy in Hawaii' web application. The interface includes a top navigation bar with logos for USDA, US Forest Service, and the Department of Land and Natural Resources. A search bar is located at the top center. On the left, a 'Layers' panel lists various data layers, with 'Tree Canopy' selected. A green arrow points to this panel with the text 'show/hide layers'. In the center, a map of Hawaii is shown with a green overlay representing tree canopy. An 'About' window is open over the map, titled 'Hawai'i Tree Canopy Viewer', providing information about the data and its use. A green arrow points to the 'Close' button (an 'x' icon) on the window with the text 'Close window'. On the right, a 'Legend' panel shows the 'Tree Canopy' layer with a green color swatch. A green arrow points to the 'Hide legend' button (an upward arrow icon) with the text 'Hide legend'. At the bottom left of the layers list, a green arrow points to the 'Hide layer list' button (a leftward arrow icon) with the text 'Hide layer list'.

USDA US Forest Service Department of Land and Natural Resources

Urban Tree Canopy in Hawaii

Layers

- ☐ Ahupua'a
- ☐ Tree Inventory (O'ahu and Kaua'i)
- ☐ STEW-MAP Stewardship Area (O'ahu and Hawai'i)
- ☐ Canopy and Census Statistics
- ☒ Tree Canopy
- ☐ Urban Canopy Cover
- ☐ Impervious Landcover
- ☐ Urban Heat Index (UHI)
- ☐ Population
- ☐ Native Hawaiian Population
- ☐ Household Income
- ☐ Asthma
- ☐ SNAP Recipients
- ☐ Cardiovascular Disease

Find address or place

About

### Hawai'i Tree Canopy Viewer

This map viewer displays a complete tree canopy layer for the state with other information—such as the extent of impervious surfaces, socioeconomic and health data, and urban heat severity maps, to name a few. These layers provide information to help us understand differences in canopy across communities. They can also aid in the process of prioritizing urban greening goals (e.g., tree planting and tree maintenance) through a lens of equity with the goal that all communities will experience the benefits that tree canopy offers. This viewer also shows IRA grant priority areas. Click on the IRA button above this box to explore those layers.

Close window

Legend

Tree Canopy  
Hawaii 2020

Hide legend

Hide layer list



# TREE CANOPY VIEWER



<https://tinyurl.com/TreeCanopyViewer>

Zoom in/out

USDA UAS Urban Tree Canopy in Hawaii

Find address or place

898 m

Ni'ihau

Kaua'i

O'ahu

Moloka'i

Lana'i

Kaho'olawe

Maui

Kahului

Kihikihi

Hawaii'i

Kalaheo

Olualoa

Hilo

4230'

Click and drag to move the map

Show priority community layers

Change base map





# TREE CANOPY VIEWER

<https://tinyurl.com/TreeCanopyViewer>



show Tree data layers



# ANNUAL OPPORTUNITIES

- **Community Grants**

- Apply annually in June. Award range is usually \$5,000 – \$15,000. One year project period

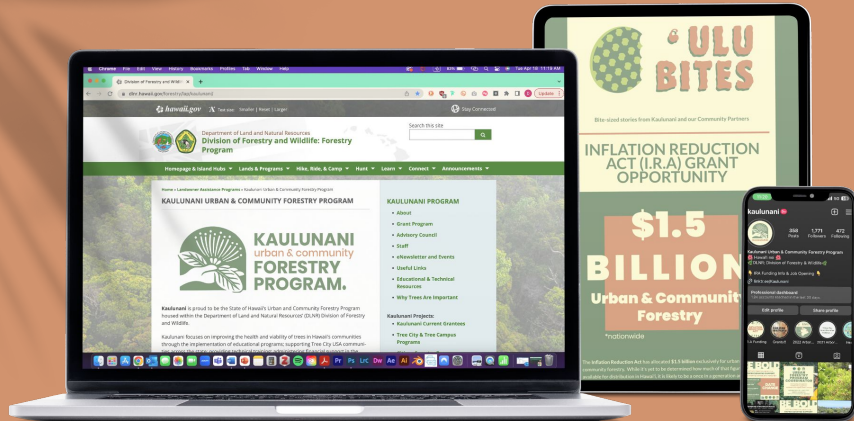
- **Arbor Day Grants**

- Application due annually in January. Award range is usually \$1,000 – \$5,000. Funding for the following year Arbor Day (first Saturday in November).





# COMMUNICATIONS



website.  
[www.kaulunani.org](http://www.kaulunani.org)

social media.  
[@kaulunani](https://www.instagram.com/kaulunani)

eNewsletter.  
'ulu bites

email.  
[info@kaulunani.org](mailto:info@kaulunani.org)  
[koki.b.atcheson.researcher@hawaii.gov](mailto:koki.b.atcheson.researcher@hawaii.gov)

# MAHALO!

**w.** [www.kaulunani.org](http://www.kaulunani.org) **e.** [info@kaulunani.org](mailto:info@kaulunani.org) **ig.** [@kaulunani](https://www.instagram.com/kaulunani) **nl.** [‘ulu bites](#)



# Pre-submitted questions

- Can partners submit a combined application?
- Are farms eligible to install windbreaks, diversified orchards and/or riparian buffers?
- What are requirements for community access/use in these scenarios?

# TIPS FOR APPLYING

- ❑ Highlight strategic partnerships!
- ❑ Clearly define purpose
- ❑ Demonstrate high likelihood of success
- ❑ Consult rubric





# TREE CANOPY VIEWER

<https://tinyurl.com/TreeCanopyViewer>



**Layers**

- ☐ Ahupua'a
- ☐ Tree Inventory (O'ahu and Kaua'i)
- ☐ STEW-MAP Stewardship Area (O'ahu and Hawai'i)
- ☐ Canopy and Census Statistics
- ☐ **Tree Canopy**
- ☐ Urban Canopy Coverage
- ☐ Impervious Landcover
- ☐ Urban Heat Index (UHI)
- ☐ Population
- ☐ Native Hawaiian Population
- ☐ Household Income
- ☐ Asthma
- ☐ SNAP Recipients
- ☐ Cardiovascular Disease

**Tree Canopy Layer Details:**

- Transparency
- Move up
- Move down
- Show item details

**To download data**

Home Gallery Groups Sign In

## Tree Canopy

Overview

Hawaii 2021 tree canopy Citation: EarthDefine LLC, US Forest Service, National Oceanic and Atmospheric Administration, HI Division of Forestry and Wildlife. 2021. Hawaii High Resolution 1m Tree Canopy Map [ESRI file geodatabase raster format], 2009-2020.  
<https://www.fs.usda.gov/detailfull/rs/communityforests/cid=fseprd995876>

Tile layer by USFSRegion05

Item created: Jan 31, 2022 Item updated: Apr 19, 2022 View count: 3,835

**Follow link**

Open in Map Viewer

Open in Scene Viewer

USDA Forest Service Caring for the Land and Serving People

Pacific Southwest Region

Forest Service Home About the Agency Contact the National Office Inside the FS

Home Visit Us Managing the Land Learn Working With Us About Us

Keyword Search

## Hawai'i Urban Canopy GIS Data & Layer List

**Download urban canopy GIS data by county:**

- ☐ A placeholder image Oahu
- ☐ A placeholder image Kauai
- ☐ A placeholder image Hawaii
- ☐ A placeholder image Maui

**Download urban canopy GIS data, Hawai'i-wide**

**The Hawai'i Urban Tree Canopy Viewer contains the following layers:**

- Tree Canopy** - Canopy layer created by EarthDefine, based on primarily Maxar VIVID imagery and LIDAR data where it was available. The Maxar VIVID imagery was collected from 2019-2020, while the LIDAR data was collected primarily by the National Oceanic and Atmospheric Administration (NOAA) and the United States Army Corps of Engineers (USACE) from 2013-2015. Better data is at 1-meter spatial resolution.

Click to download a zip file with  
all TCV layers