



KAULUNANI urban & community FORESTRY PROGRAM.

Shade Trees for Schools Virtual Info Session

June 18, 2025



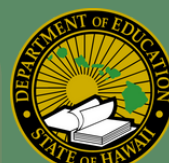
RYAN ICHIMURA DOE Facilities Maintenance
Administrator

ANGELA LIU-KELLY DOE Arborist

ILANA NIMZ Tree Solutions Hawai'i Arborist

HEATHER MCMILLEN DLNR Urban Forester

MALIA STAAB Kaulunani Campus Forester



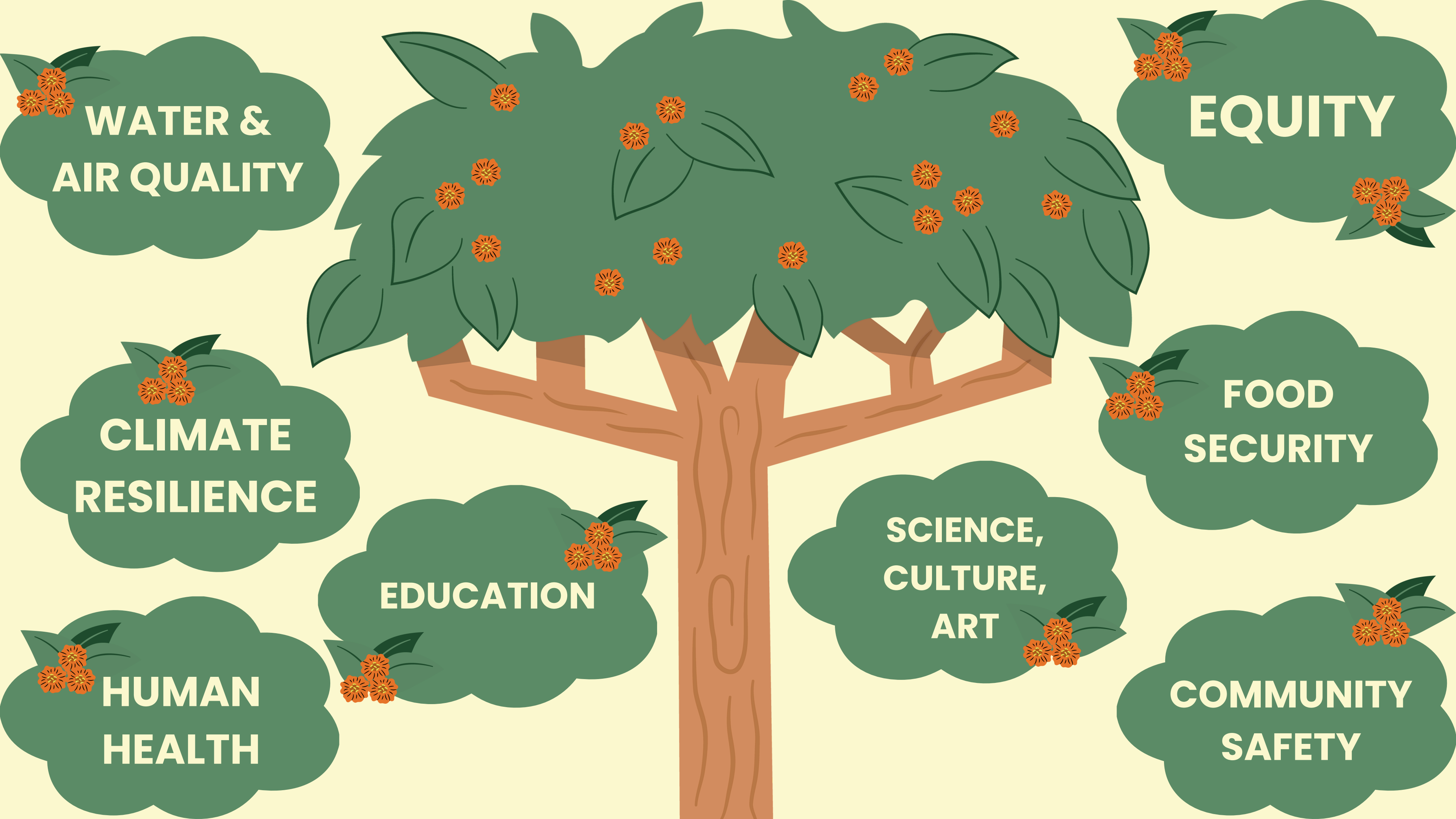
The background of the entire graphic is a vibrant, stylized illustration of a tropical environment. It features several large trees with thick brown trunks and dense green foliage. Some trees have small white flowers, while others have yellow or orange blossoms. A white bird is perched on a branch on the left, and another is flying on the right. In the foreground, three people are engaged in outdoor activities: a person in a green shirt is watering a plant with a white watering can, an older woman in a green patterned dress is sitting on the ground and tending to a basket of orange flowers, and a man in a white shirt is sitting on the ground, possibly working on a craft or tool. The overall scene is bright and cheerful, with a warm yellow background.

SHADE TREES FOR SCHOOLS PROJECT

OUR VISION

OUR VISION IS TO EXPAND TREE CANOPY ON PUBLIC SCHOOL GROUNDS TO REDUCE HEAT AND CREATE OUTDOOR SPACES THAT IMPROVE OPPORTUNITIES FOR STUDENTS' WELL-BEING, LEARNING, AND PLAY, WHILE STRENGTHENING COMMUNITIES' ECOLOGICAL HEALTH AND RESILIENCE.

THIS PROJECT WILL SUPPORT HAWAI'I TITLE I DOE SCHOOLS, ACROSS THE ISLANDS, IN ENHANCING CAMPUS CANOPY COVER, AND ACT AS A MODEL FOR GREENING OUR SCHOOLYARDS STATEWIDE.



**WATER &
AIR QUALITY**

EQUITY

**CLIMATE
RESILIENCE**

**FOOD
SECURITY**

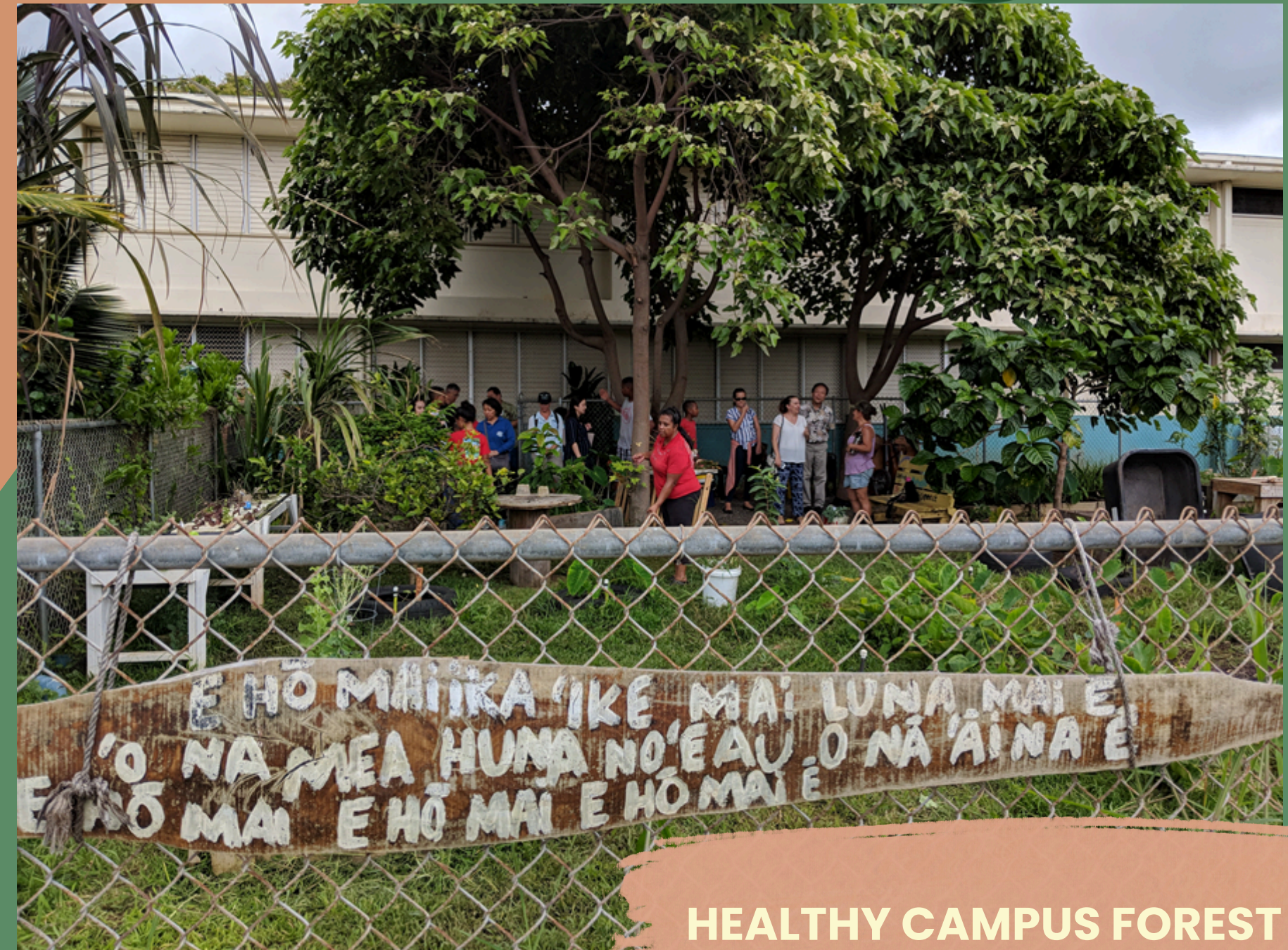
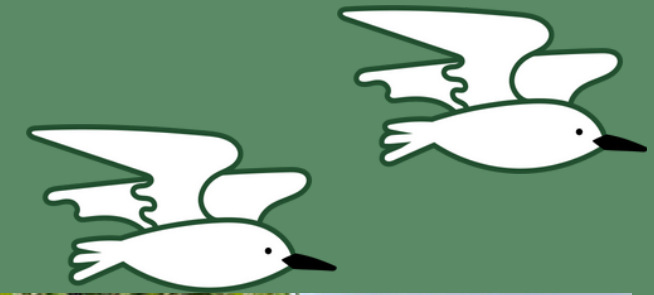
**SCIENCE,
CULTURE,
ART**

**COMMUNITY
SAFETY**

EDUCATION

**HUMAN
HEALTH**

CAMPUS WITH LOW CANOPY COVER



HEALTHY CAMPUS FOREST



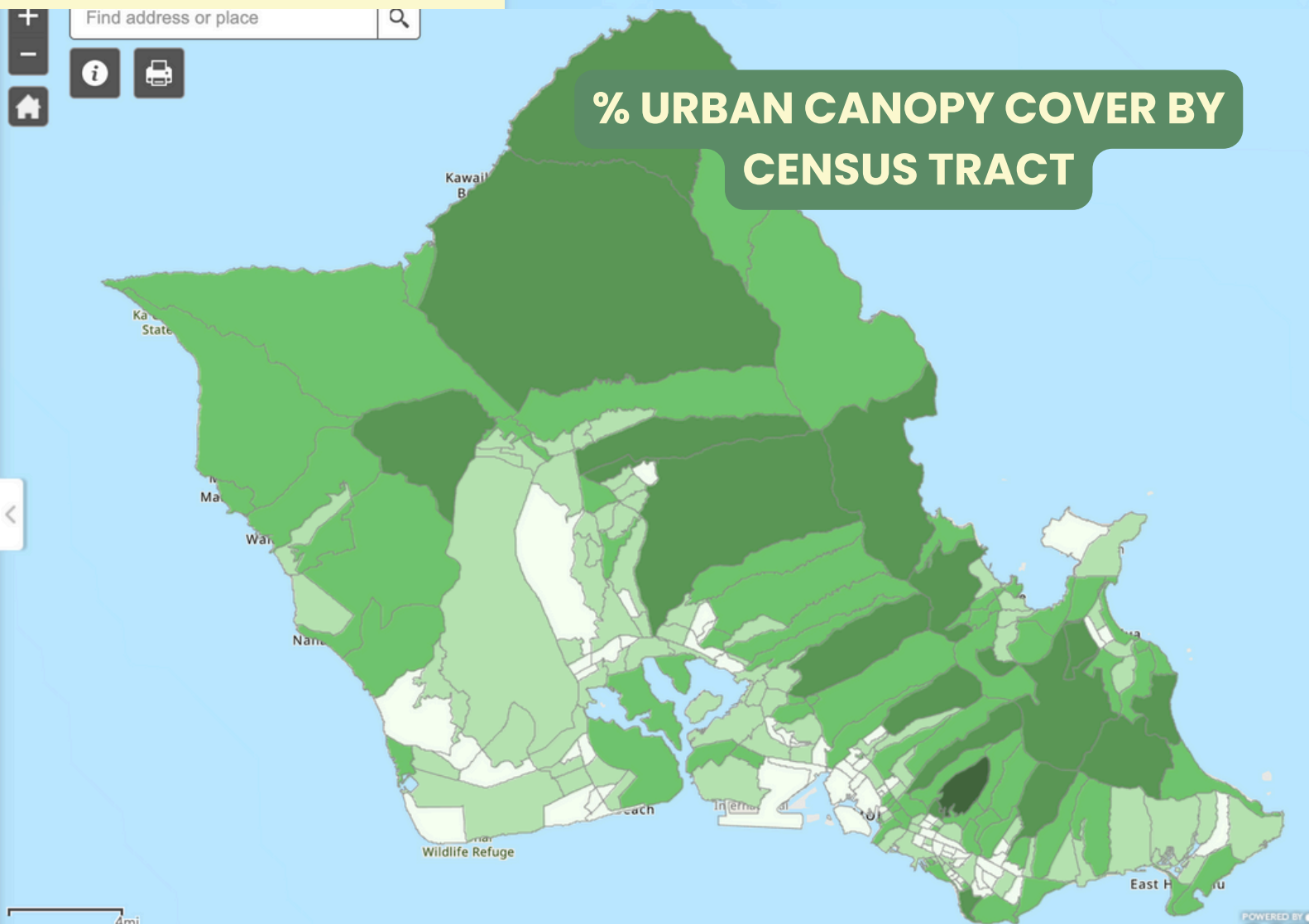
STUDENTS – ESPECIALLY THOSE AT TITLE I SCHOOLS – DO NOT HAVE ACCESS TO THE HEALTH, WELL-BEING, AND ENVIRONMENTAL BENEFITS OF TREE CANOPY AT SCHOOL.



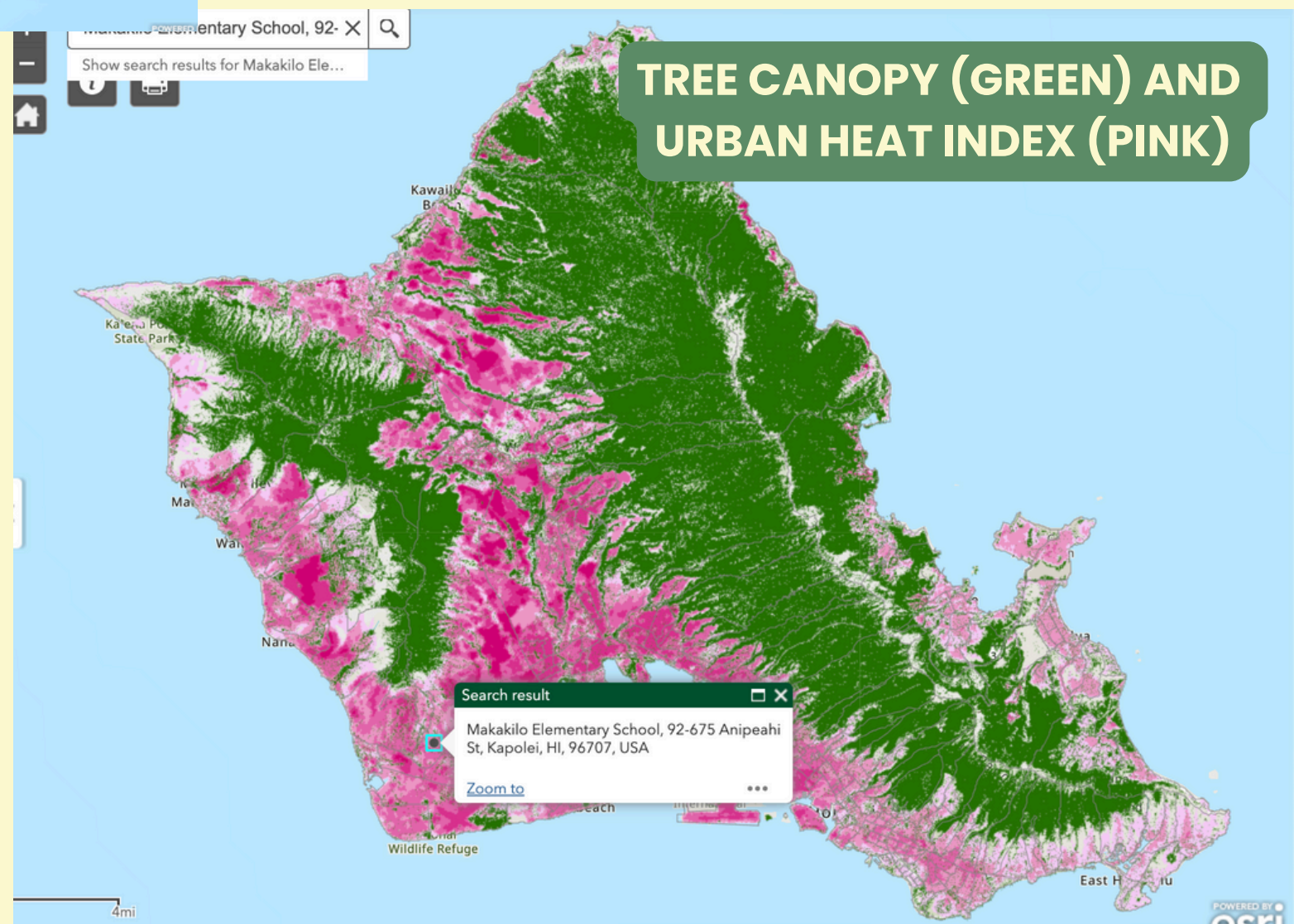
HAWAI'I TREE CANOPY VIEWER



TREE CANOPY ACROSS THE STATE

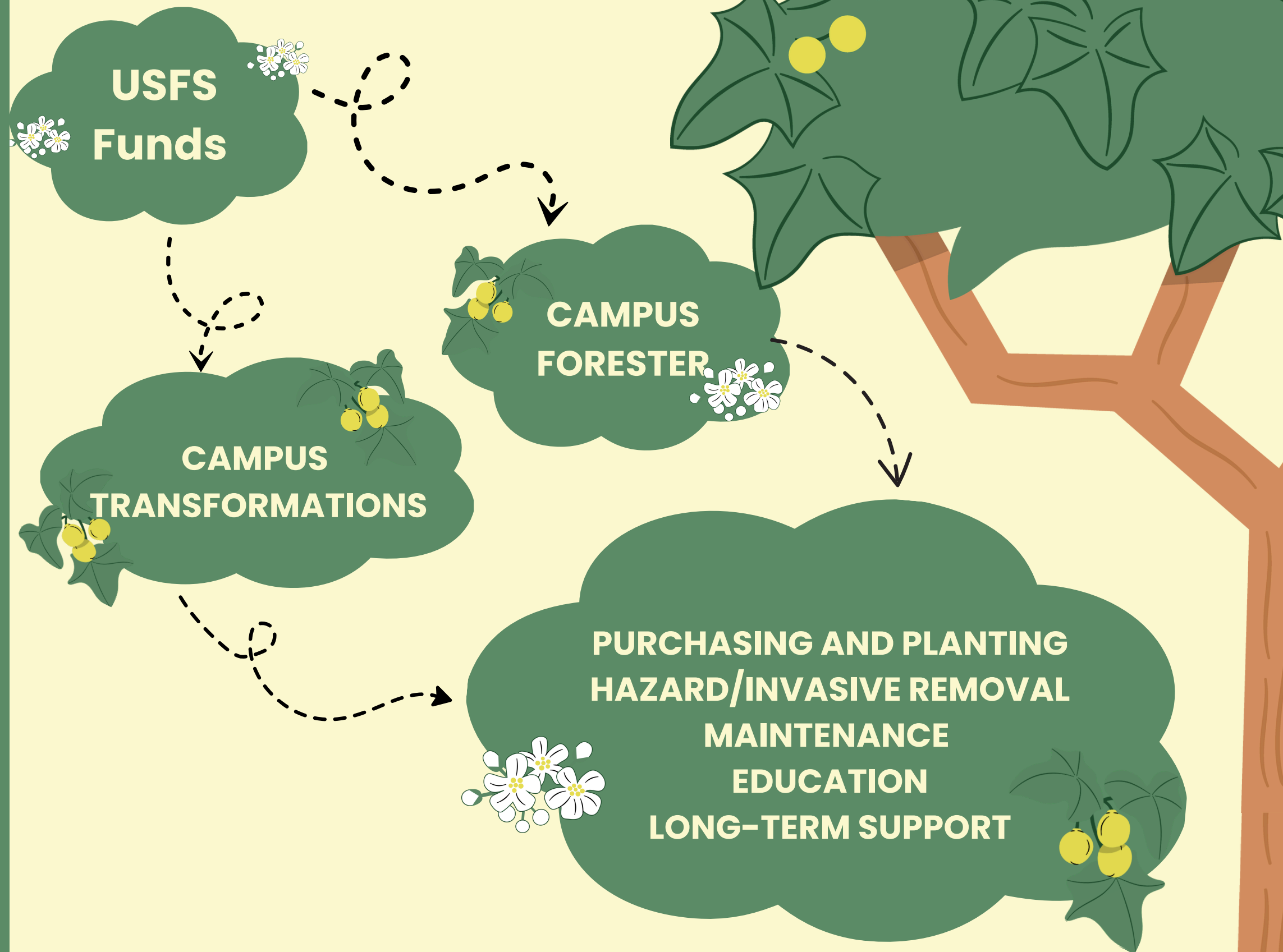


% URBAN CANOPY COVER BY CENSUS TRACT



TREE CANOPY (GREEN) AND URBAN HEAT INDEX (PINK)

SHADE TREES FOR SCHOOLS



SHADE TREES FOR SCHOOLS PROJECT – TREE TEAM & ROLES –

RYAN ICHIMURA
DOE Facilities Maintenance
Adminstrator

- Planning and Approvals



YOUR CAMPUS TEAM
Principal & Administrators,
Facilities staff,
Teachers & Students
Campus Tree Care Plan

-

HEATHER MCMILLEN
DLNR Urban Forester
• Supervision, Planning
and Reporting



ANGELA LIU-KELLY
DOE Arborist

- Planning and Approvals



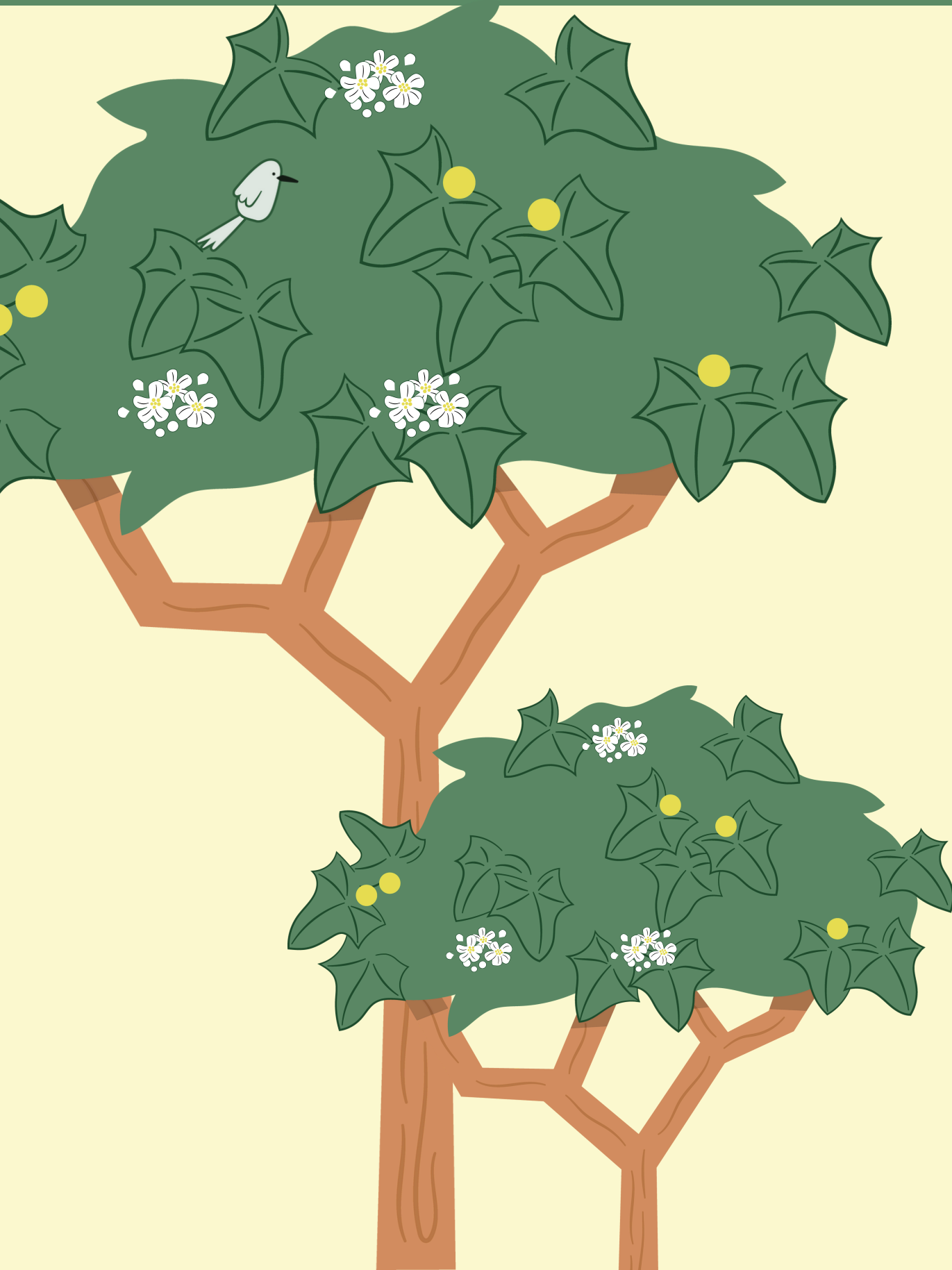
ILANA NIMZ
Consulting Arborist for DOE
• Planning and Arbor Work
Oversight



MALIA STAAB
Kaulunani Campus Forester
• Campus Tree Education,
Data tracking



PROJECT TIMELINE



**CAS NOMINATION
DEADLINE
JULY 3RD, 2025**

**PRINCIPAL APPLICATION
DEADLINE
AUGUST, 2025**

**SCHOOL SELECTION
FALL 2025**

**CAMPUS WORK BEGINS
2026**

**CAMPUS SUPPORT UNTIL
PROGRAM COMPLETION IN 2028**

**CONTINUED TREE
SUPPORT BY OFO**

CAS NOMINATION FORM



Shade Trees for Schools Nomination Form

B *I* U

The Office of Facilities and Operations (OFO) would like to invite you to nominate (up to 2) DOE Title I schools in your Complex Area that would be interested in participating in the United States Forest Service funded Shade Trees for Schools Project, a partnership between the Department of Land and Natural Resources (DLNR) Kaulunani Urban and Community Forestry Program and HI Department of Education. Schools that are nominated should be interested in increasing the tree canopy cover on their grounds, highly motivated and ready to participate in a school-based planning and tree planting project. (More information on this project found in the DOE Nominations Memo)

PLEASE NOTE - ONLY COMPLEX AREA SUPERINTENDENTS MAY NOMINATE SCHOOLS.

Your Name

Short answer text

Select Your Complex Area



Dropdown

School #1 Nomination

Short answer text

School #1 Contact (Principal) Name

Short answer text

School #1 Contact Email

Short answer text

School # 1 Contact Phone

Short answer text

Reason for Nomination

Long answer text



This data was collated based off the 2024-2025 [DOE Title I School List](#), using the [Urban Tree Canopy Viewer](#) in Hawai'i Arc GIS Tool, a 2022 collaboration between USDA Forest Service and Kaulunani Urban and Community Forestry Program.

More info on this project found in the DOE Nominations memo	School Nomination Form linked here		Definitions:
<i>* The Tree Canopy Viewer is a tool utilized to show a generalized snapshot in time. While the term "urban" is used repeatedly in this document, we understand not all schools are in urban areas. This tool utilized land use terminology in its data representation.</i> <i>While this data can help inform some of your decision making for schools in need of enhanced canopy, please utilize your place-specific knowledge of campus need and interest in your final decision making.</i>			The Urban Canopy Cover percentage displays canopy cover using census tract boundaries*. * Urban Canopy Cover categorizes data by census tract, while it is useful for applying general statistics to areas across the state, it is not specified by school campus area. Just because a school is in a census tract with higher % urban canopy cover, does not mean the school itself has similarly high canopy cover.
Feel free to sort the document based on district area, Urban Canopy Cover or Urban Heat Index.			The Urban Heat Index (UHI) demonstrates the heat severity in urban areas* statewide measured on a scale of 1 - (Mild); 2 - (Mild - Moderate); 3 - (Moderate); 4 - (Moderate - Severe); 5 - (Severe); 0 - (N/A) <i>*The UHI uses land cover layers to define "urban" areas. Parts of islands not defined as "urban" do not have a UHI value, hence the number 0 for "not available", though they surely still experience urban heat.</i>
There is a second tab at the bottom of this page with the same school info but no definitions for easier viewing and sorting.			*This tab has been filtered to show high priority schools with UHI from Moderate to Severe (3-5). Schools with a UHI of 0 are included as we do not have adequate data to exclude them. A list of all Title I Schools and their associated UHI values is at the bottom of this page.

School	District	Island	Urban Canopy Cover (%)	Urban Heat Index (UHI)
Kūlanihākoʻi High	Baldwin-Kekaulikea-Kūlanihākoʻi-Maui	Maui	1-8 ▾	0 ▾
Makakilo Elem	Campbell-Kapolei	Oʻahu	1-8 ▾	3 ▾
Farrington High	Farrington-Kaiser-Kalani	Oʻahu	1-8 ▾	4 ▾
Kalākaua Middle	Farrington-Kaiser-Kalani	Oʻahu	1-8 ▾	3 ▾
Kalihi Kai Elem	Farrington-Kaiser-Kalani	Oʻahu	1-8 ▾	3 ▾
Kalihi Waena Elem	Farrington-Kaiser-Kalani	Oʻahu	1-8 ▾	3 ▾
Kapālama Elem	Farrington-Kaiser-Kalani	Oʻahu	1-8 ▾	3 ▾
Puʻuhale Elem	Farrington-Kaiser-Kalani	Oʻahu	1-8 ▾	4 ▾
Lānaʻi High & Elem	Hāna-Lāhaināluna-Lānaʻi-Molokaʻi	Lānaʻi	1-8 ▾	3 ▾
Waimalu Elem	ʻAiea-Moanalua-Radford	Oʻahu	1-8 ▾	3 ▾
Lanakila Elem	Kaimukī-McKinley-Roosevelt	Oʻahu	1-8 ▾	3 ▾
Ahrens Elem	Pearl City-Waipahu	Oʻahu	1-8 ▾	4 ▾
Kahului Elem	Baldwin-Kekaulikea-Kūlanihākoʻi-Maui	Maui	8-15 ▾	0 ▾
Lihikai Elem	Baldwin-Kekaulikea-Kūlanihākoʻi-Maui	Maui	8-15 ▾	0 ▾
Maui Waena Int	Baldwin-Kekaulikea-Kūlanihākoʻi-Maui	Maui	8-15 ▾	0 ▾
Wailuku Elem	Baldwin-Kekaulikea-Kūlanihākoʻi-Maui	Maui	8-15 ▾	3 ▾
Barbers Point Elem	Campbell-Kapolei	Oʻahu	8-15 ▾	3 ▾
ʻEwa Elem	Campbell-Kapolei	Oʻahu	8-15 ▾	3 ▾
Kaʻimiloa Elem	Campbell-Kapolei	Oʻahu	8-15 ▾	3 ▾
Pōhākea Elem	Campbell-Kapolei	Oʻahu	8-15 ▾	3 ▾

TIMELINE & NEXT STEPS

JUNE 18 – WEBINAR

- CAS nominates up to 2 schools in their complex area
(Use Priority Schools List and CAS Nomination Form)

JULY 3 – CAS NOMINATION DEADLINE

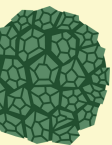
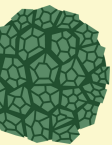
- Principals of nominated schools apply
(Use Principal Application Form)

EARLY AUGUST, DATE TBD – PRINCIPAL APPLICATION DEADLINE




- Evaluation team will narrow down priority list based on school need, scale of work and campus commitment. We will strive to have schools in multiple counties across the state represented
- Arborist team will survey priority schools to understand the scale and cost of work at each school

FALL 2025 – SELECTION OF 6–10 SCHOOLS TO PARTICIPATE IN THIS PROJECT

2026 CAMPUS TREE WORK BEGINS







SCHOOL TREE INVENTORY AND PLANTING LOCATIONS



Legend

KaimiloaES_Map

-  Planting Location
-  Tree/Palm
-  Stump



[Trust Center](#) [Legal](#)
[Contact Esri](#) [Report Abuse](#)





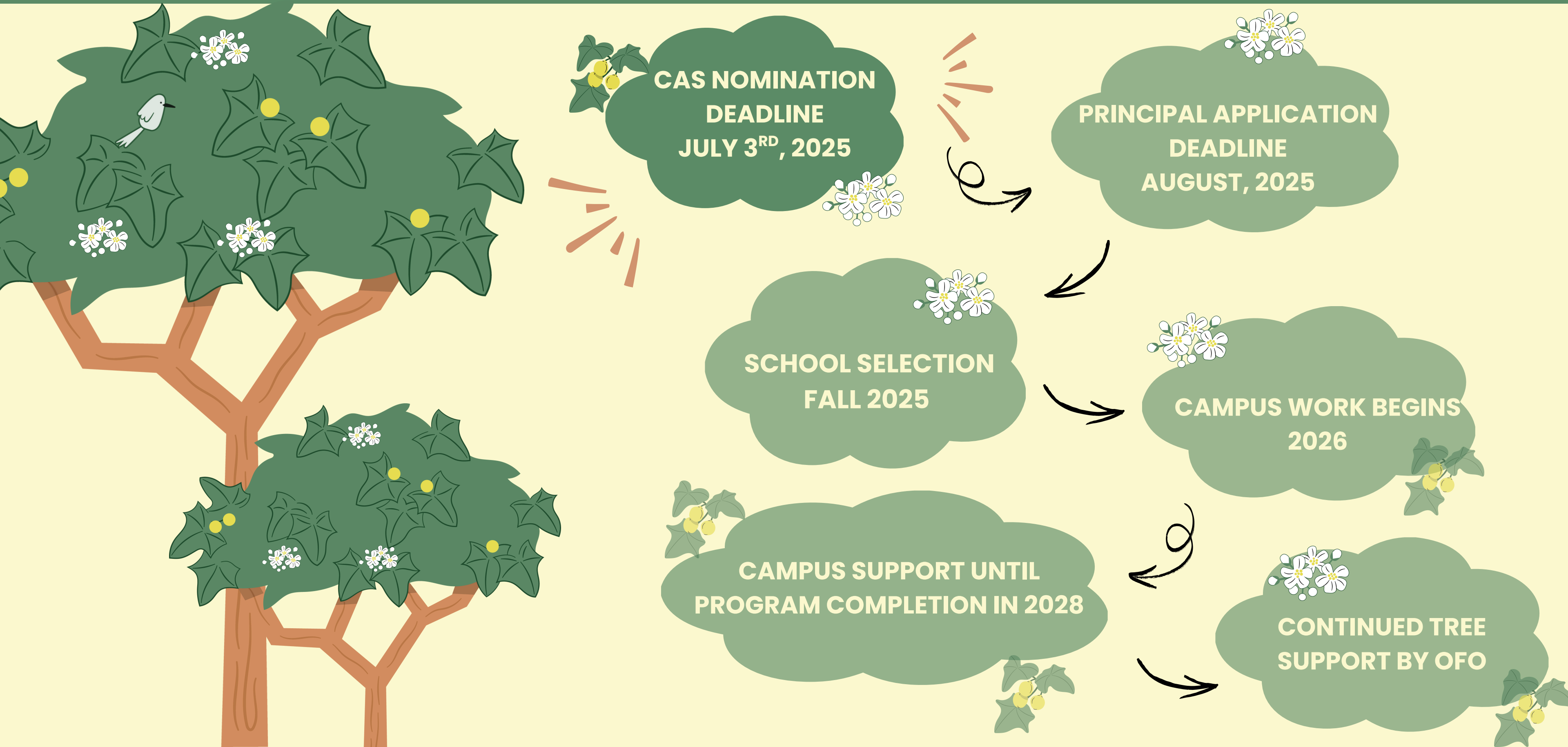
CAMPUS TREE EDUCATION: BUILDING (TREE)LATIONSHIPS



CAMPUS TREE TEAM
LONG TERM TREE CARE PLAN
CLASSROOM ACTIVITIES
PLANTING EVENTS
BUILDING COMMUNITY



PROJECT TIMELINE



SHADE TREES FOR SCHOOLS PROJECT

MAHALO!

QUESTIONS? COMMENTS?

CONTACT

(808) 831-6731

711ofo-shade-trees-project@k12.hi.us



ARTWORK BY KELSIE DAYNA

