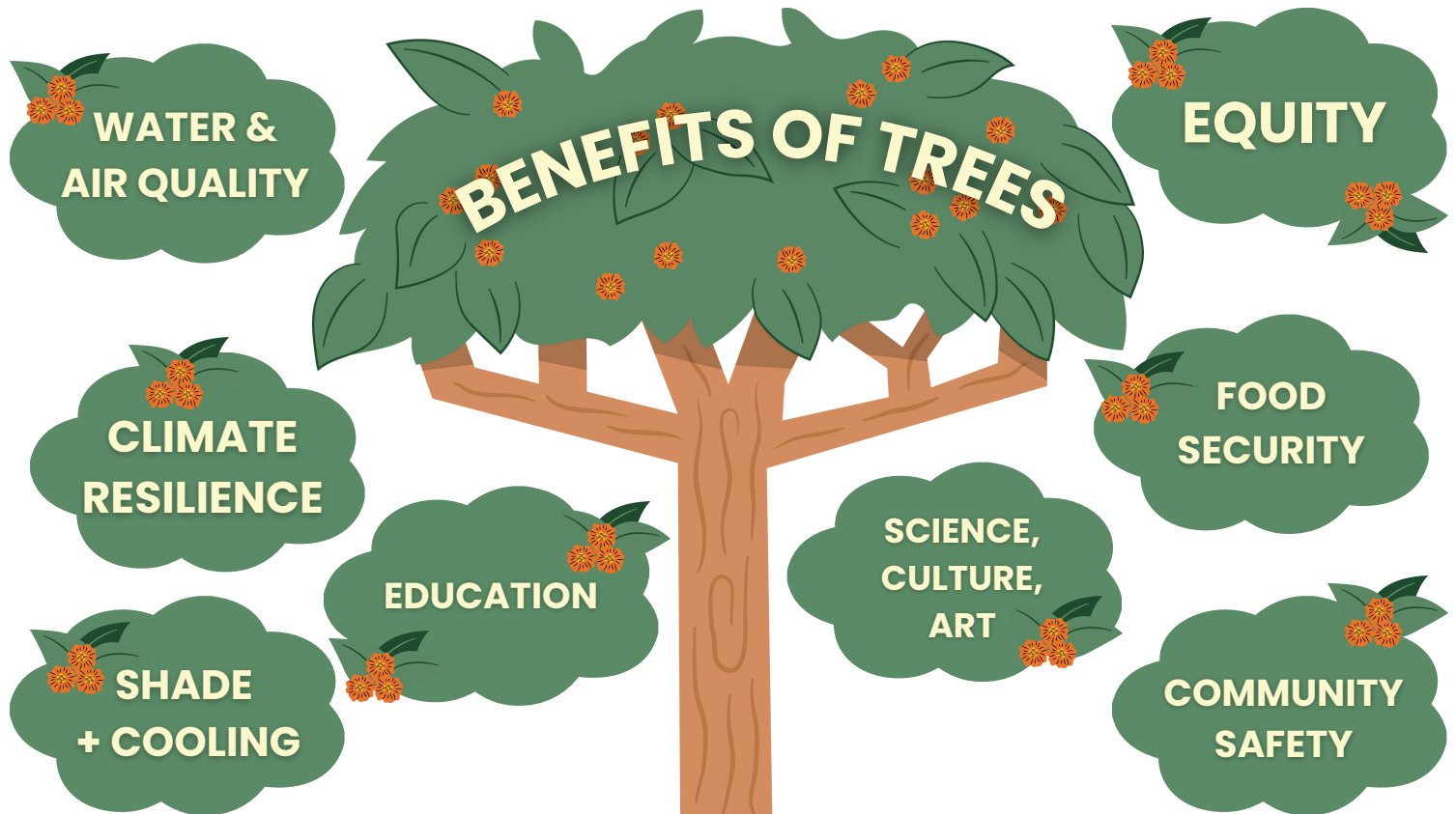




# KAULUNANI SHADE TREES FOR SCHOOLS

*Our vision is to expand tree canopy on school grounds to reduce heat and create outdoor spaces that improve opportunities for students' well-being, learning, and play, while strengthening communities' ecological health and resilience.*



## Trees are more than just beautiful!

A healthy urban canopy provides **cleaner air and water, reduced erosion, climate resilience and healthy habitat** for urban species. Enhanced urban canopy also encourages people to spend more time outside, contributing to **improved physical, mental and emotional health.**

On school campuses, studies show that seeing more greenery outside classroom windows **help reduce stress and anxiety in students, leading to improved classroom performance.** Trees are also an important educational tool, providing the **opportunity for students to connect to the environment, art, culture and food systems on campus.** Tree planting and care activities **create a sense of pride** in caring for the school community.

# WANT TO PLANT TREES ON YOUR CAMPUS?

## MAKE A TREE CARE PLAN:

### VISION

**Why do you want trees on campus? Where?**

- Make a map with current and proposed trees

### TREE TEAM

**Who will be involved in long-term tree upkeep and care?**

- Invite teachers, students, administrators, facilities, and community members

### SELECTION

**"Right tree for the right place"**

- Consider tree environmental requirements and growth
- Compare planting locations with above and below ground utilities to avoid conflicts

### PERMISSIONS

**Get proper approvals before planting!**

- Talk to administrators and facilities teams
- If a DOE campus, get approval through the Office of Facilities

### PLANTING

**Have a planting event!**

- Engage students, facilities, teachers, administrators and community

### PILINA

**How can you continue to build relationship between trees and your campus culture?**

**MORE INFORMATION ON THE SHADE TREES FOR SCHOOLS WEBSITE**

## **RESOURCES**

- [Year of our Community Forests Resources](#)
- [Hawai'i Farm to School Resource Hub](#)
- [Green Schoolyards Educator Resources](#)
- [Arbor Day Foundation Learning Hub](#)

#### Tree Curriculum

- [How cool is your Schoolyard?](#)
- [Calculate tree services with iTree](#)
- [Create Tree Art](#)
- [Grow Native Plants with MLC](#)

#### How to plant a tree

- [Hawaiian Electric Right Tree Right Place](#)
- [How to Plant a Tree with DPR](#)
- CTAHR tips on [Planting a Tree](#)

## **Caring for trees at school?** **Become a Tree Campus!**

- Strengthen campus community and pride around campus trees
- Gain national recognition through the Arbor Day Foundation [Tree Campus K-12 Program](#)
- Learn more at [kaulunani.org](http://kaulunani.org), click on Tree City & Tree Campus Programs

#### CONTACT

**Malia Staab, Kaulunani Campus Forester**

[malia.l.staab.researcher@hawaii.gov](mailto:malia.l.staab.researcher@hawaii.gov)

**Le'a Ka'aha'aina, Kaulunani Outreach**

[lea.a.kaahaaina.researcher@hawaii.gov](mailto:lea.a.kaahaaina.researcher@hawaii.gov)