

# Arbor Day & Community Grants 2026

## Information for Applicants

Online  
Tuesday Feb 10th  
10 – 11 AM HST



**w.** [www.kaulunani.org](http://www.kaulunani.org) **e.** [info@kaulunani.org](mailto:info@kaulunani.org) **ig.** [@kaulunani](https://www.instagram.com/kaulunani) **nl.** [‘ulu bites](#)



# AGENDA



## **1. Introduction to Kaulunani**

**2. 2026 Funding Overview**

**3. Arbor Day Grants**

**4. Community Grants**

**5. Eligibility Requirements**

**6. Questions**

**Pau**

# ORGANIZATIONAL STRUCTURE – funding

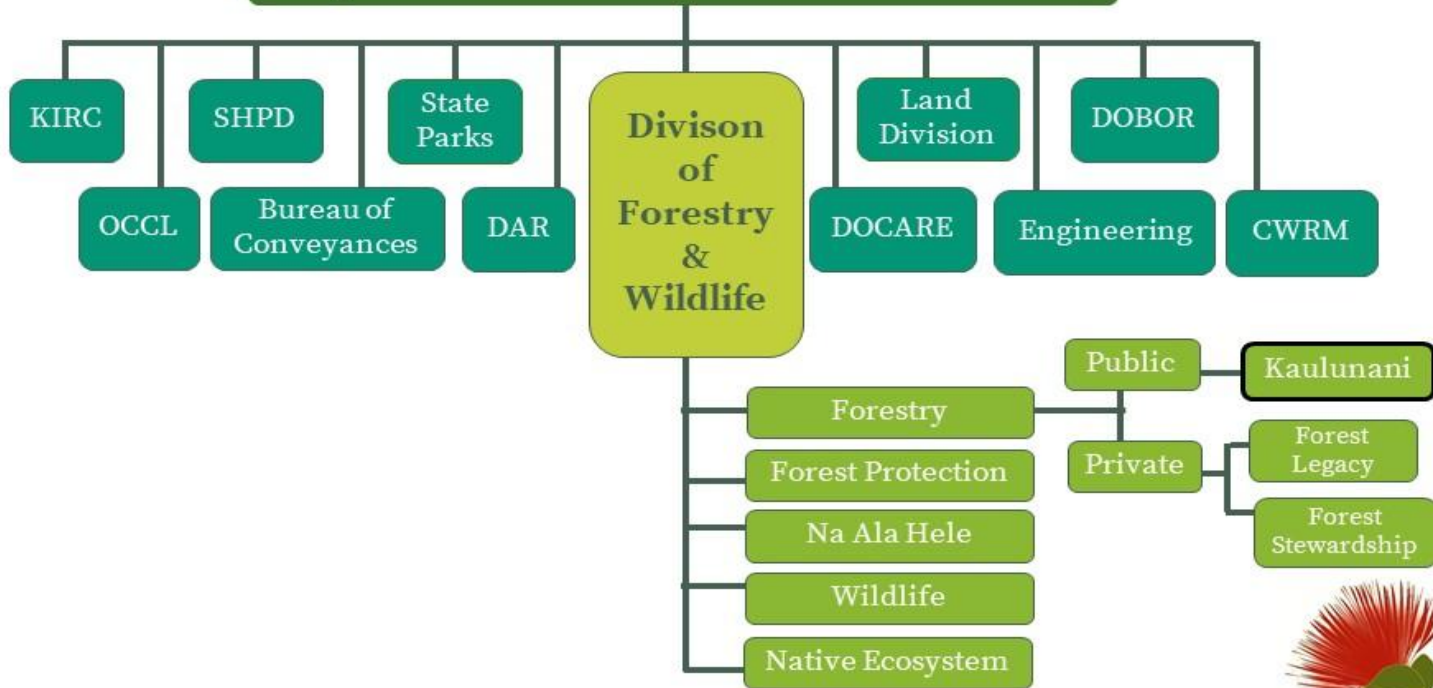


**KAULUNANI**  
urban & community  
**FORESTRY  
PROGRAM.**



# Board of Land and Natural Resources

## Department of Land and Natural Resources







# ADVISORY COUNCIL



- 16 members from O‘ahu, Maui, Kaua‘i & Hawai‘i Island (some pictured)
- Three year term
- Represents local government, academia, community & business
- Provides recommendations, direction & strategic guidance
- Learn more [on our website](#)



# MISSION

Our mission is to support all of Hawai'i's communities with a focus on equity to cultivate well-being and resilience through restorative & environmental justice, planting, caring for, and growing relationships with the trees and forests where we live, work, learn and play.







# EQUITY & JUSTICE STATEMENT

**We recognize our mission is best fulfilled through engaging people of diverse backgrounds, beliefs, experiences and cultures with a focus on our underserved and low-income communities as well as Native Hawaiians.**

**[Full statement is available here](#)**





# WHAT IS AN URBAN FOREST?



Trees on Private Property



Street Trees



Urban Park



Campus Trees



Rain Garden



Pocket Park

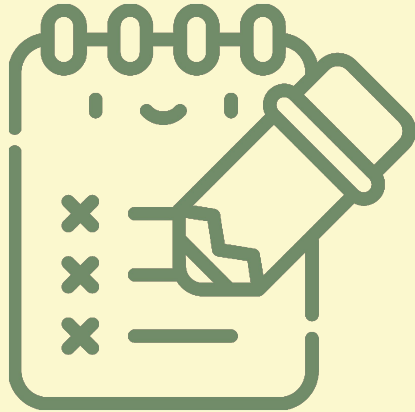


# Urban and **COMMUNITY** forestry





# AGENDA



1. Introduction to Kaulunani
- 2. 2026 Funding Overview**
3. Arbor Day Grants
4. Community Grants
5. Eligibility Requirements
6. Questions

**Pau**

# PURPOSE OF FUNDING

Support **local** urban and community forestry **initiatives or projects** that develop and sustain programs that **grow urban and community trees and forests.**

# Arbor Day Grants

- **Award Amount: \$10,000**
- **Total pool: \$80k**
- **Project Period: late May 2026 – Dec 31 2026**
- Funds to support tree planting, adoptions, celebrations on or around Arbor Day 2026 (Nov 6th)

# Community Grants

- **Award Amount: \$20k–\$50k**
- **Total pool: \$400k**
- **Project period: late May 2026 – April 15, 2027**

# Arbor Day Grants

# Community Grants

- **Q: Can our organization apply for both opportunities?**
- A: Yes, but:
  - We recommend making projects clearly distinct from one another.
  - The advisory council is committed to distributing funding across organizations and geographies.

# What to Expect: Grant Process Timeline

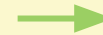
**March 1, 2026**

Application closing date (11:59PM)



**March 31**

Council vote, send recommendations to the State Forester

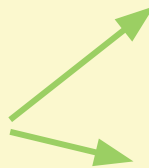


**Week of April 13**

Applicants notified

**April 13–April 30 2026**

Grant Agreements and procurement paperwork executed (eSign). DOFAW procurement process begins. Notice to Proceed issued (approx 6 week process in total)



**Arbor Day Grants**

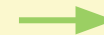
**December 31, 2026**



**January 30, 2027**

**Community Grants**

**April 15, 2027**



**May 15, 2027**

Project funds must be fully expended and activities completed.

Final project reflections and invoice due



# AGENDA



1. Introduction to Kaulunani
2. 2026 Funding Overview
- 3. Arbor Day Grants**
4. Community Grants
5. Eligibility Requirements
6. Questions

**Pau**

# Request for Proposals: Arbor Day

- The purpose of this grant is to support community tree planting, tree adoptions, celebrations, and activities on or around Arbor Day 2026 (Friday, November 6th)
- ***Additional components may include:***
  - Tree care and maintenance, both education and application
  - Education and/or outreach\*
  - Cultural and artistic expression\*
  - Invasive species, pest and disease management for trees

*\*Related to urban and community forestry*

# Project Examples: Arbor Day



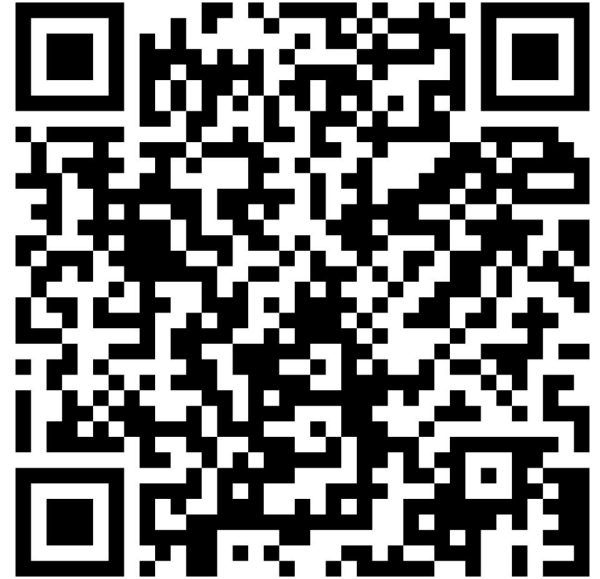
**Mālama Learning Center 2025: E Ulu Mau Ke Kaiāulu O Wai‘anae – Tree to Table** event with education, hands on demonstration, and tree distribution



**Maui Nui Botanical Gardens: Arbor Day 2025** – 1800 trees gifted, nursery partnerships. Full day event with education, games, 164 staff/volunteers

# Project Examples, Arbor Day and Community Grants

[https://dlnr.hawaii.gov/forestry/lap/kaulunani/grants/kaulunani\\_funded\\_projects/](https://dlnr.hawaii.gov/forestry/lap/kaulunani/grants/kaulunani_funded_projects/)



# AGENDA



1. Introduction to Kaulunani
2. 2026 Funding Overview
3. Arbor Day Grants
- 4. Community Grants**
5. Eligibility Requirements
6. Questions

Pau



# Request for Proposals: Community Grants

- The purpose of this grant is to promote the protection and enhancement of urban and community forest ecosystems – tree planting, the care of trees, and education on tree issues where we live, work, learn, and play
- Tree planting, care, and education is prioritized, but a wide range of approaches and project activities are eligible.

# Example Community Grant Project Components (1/2)

- Tree plantings & giveaways
- Tree care and maintenance, both education and application
- Education and/or outreach about Urban & Community Forestry issues
- Cultural and artistic expression related to urban and community forestry
- Stipend, mini-grant programs for tree-related activities

# Example Community Grant Project Components (2/2)

- Training for staff and/or volunteers; workforce development
- Tree / urban forestry management plan development
- Invasive species, pest and disease management for trees
- Tree nursery capacity building
- Trees as green infrastructure (e.g. to manage stormwater runoff, firewise landscaping)
- Urban wood utilization
- Agroforestry

# Project Examples: Community Grants



**Hālau Kū Māna – Lā ‘Ohana:** 8th grade students hosted their families to engage in tree planting and stream ecosystem restoration



**Aloha Pu‘u Kukui – Wao Kele o Honolulu:** Site preparation and large-scale planting volunteer day to establish 1,200 koa and 1,200 ‘a‘ali‘i



# Project Examples: Community Grants



**MA'O Organic Farms – Agroforestry Planting and Mentorship:** Offered interns a series of workshops covering tree maintenance and care.



**North Shore Community Land Trust – I Lei Waiale'e I Ka Hala:** propagation, care, outplanting of trees, including training of two Kupu members and volunteer support<sup>24</sup>



# AGENDA



1. Introduction to Kaulunani
2. 2026 Funding Overview
3. Arbor Day Grants
4. Community Grants
- 5. Eligibility Requirements**
6. Questions

Pau

# ELIGIBILITY – APPLICANTS

- **Organization:** Non-federal entities operating within Hawai'i. 501(c)(3) status not required. Non-profit organizations, private organizations, schools, places of worship, community groups, and State and County agencies.
- **Partnerships are encouraged!**

# ELIGIBILITY – APPLICANTS

- Registration with **Hawai'i Compliance Express** and current HCE certification must be provided with your application.
- This is a partial **reimbursement** program
  - **Arbor Day:** 50% payable following issuance of Notice to Proceed, balance upon project completion
  - **Community Grants:** one-third following Notice to Proceed, one third at mid point, balance upon project completion

# ELIGIBLE EXPENSES



Personnel  
(salary,  
fringe - up  
to 40%)

Indirect up  
to 10%



Consultants  
/Subject  
matter  
experts



Print &  
digital  
outreach  
materials,  
"tech  
transfer"



Maintain /  
monitor  
/care for  
trees



Supplies,  
tools,  
equipment  
(must be  
<\$10k per  
item)



Tree  
seedlings/  
saplings  
(70% plant  
costs =  
trees)

# INELIGIBLE EXPENSES



Property acquisition



Projects on property inaccessible to public



Equipment that costs > \$10,000 per unit



Food and refreshments



Construction projects



Land clearing  
(Site prep & invasive, hazard tree removal ok)



# If Tree Planting or Giveaway: NEED:

- Landowner permission (PLANTING)
- Maintenance plan & site map (PLANTING)
- Species list (with weed risk assessment scores from Plant Pono) (BOTH)
- Nursery quote (BOTH, if purchasing)



plantpono.org

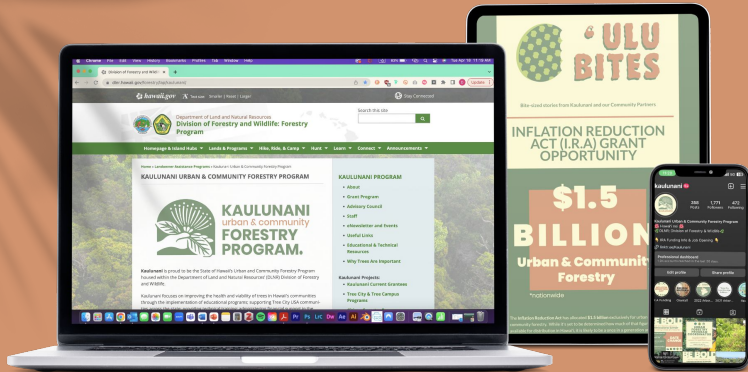
# REPORTING REQUIREMENTS

- Due upon project completion
- Include:
  - Receipts, explanation of expenditures
  - # of volunteers; # of volunteer hours
  - Accomplishments and photos
  - HCE certificate
- Optional for Community Grants
  - mid point report for  $\frac{1}{3}$  reimbursement





# COMMUNICATIONS



website.

[www.kaulunani.org](http://www.kaulunani.org)

[www.dlnr.hawaii.gov/dofaw/trees/](http://www.dlnr.hawaii.gov/dofaw/trees/)

social media.

[@kaulunani](https://www.instagram.com/kaulunani)

eNewsletter.

'ulu bites

email.

[info@kaulunani.org](mailto:info@kaulunani.org)

[kate.e.wiechmann.researcher@hawaii.gov](mailto:kate.e.wiechmann.researcher@hawaii.gov)

# MAHALO!

**w.** [www.kaulunani.org](http://www.kaulunani.org) **e.** [info@kaulunani.org](mailto:info@kaulunani.org) **ig.** [@kaulunani](https://www.instagram.com/kaulunani) **nl.** [‘ulu bites](#)

