

# BUY SOIL, NOT BEETLES!

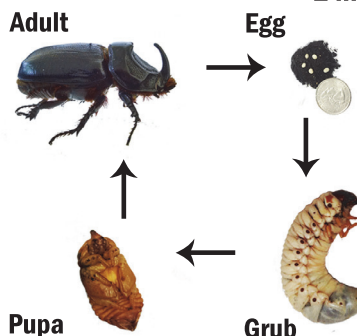


The Coconut Rhinoceros Beetle (CRB) is an invasive pest. CRB can burrow into store-bought bags of mulch, compost, soil, and other similar products. CRB are black, have a horn, and average 2 inches in length. Adults feed on and can kill palms! Immature stages include eggs, grubs, and pupae. The grubs can grow up to 3 inches long.



2 in.

Life  
Cycle:



## CHECK YOUR BAGS

Before you buy bags of soil, mulch, or compost, inspect the surface for holes. Beetle damage looks different from typical rips and tears. You will see a central hole up to 1 inch big, surrounded by pin holes. Continue to monitor your bags throughout use, and report any potential CRB damage.



## KNOW WHAT TO DO

This supplier is doing their part to stop the spread of CRB, and you can too! If you suspect CRB damage, notify staff IMMEDIATELY. For all inquiries call 643-PEST, email [BeetleBustersHI@gmail.com](mailto:BeetleBustersHI@gmail.com), or visit [HDOA.Hawaii.gov/PI/main/CRB](http://HDOA.Hawaii.gov/PI/main/CRB)