



Holomua

Marine Initiative



What is the Holomua Marine Initiative?

The Holomua Marine Initiative is a call to action for local communities to come together and collaboratively design an island-based management strategy in partnership with the Division of Aquatic Resources (DAR) to effectively manage nearshore areas, ensuring healthy reefs and abundant resources for future generations.

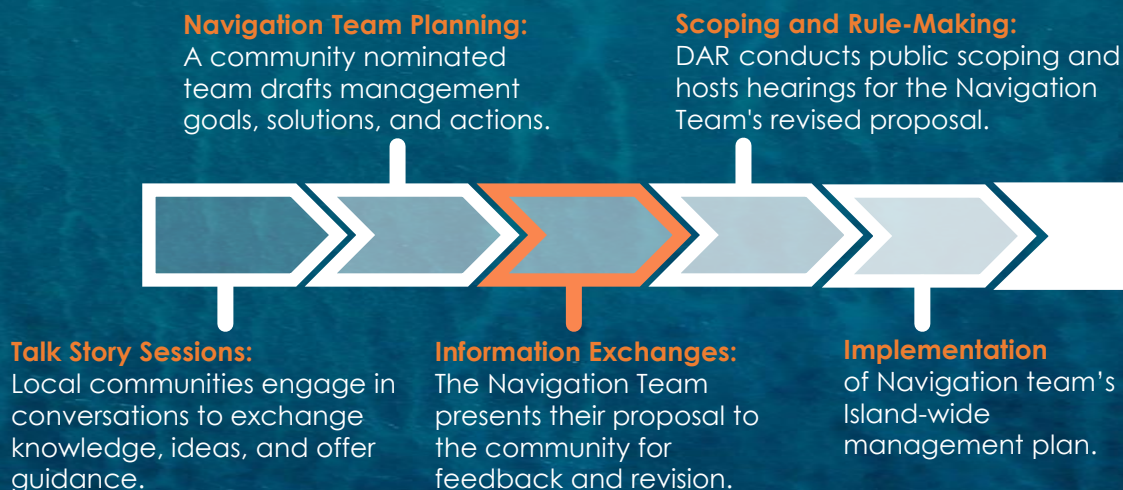
How is the Holomua Marine Initiative different?

Unlike most government processes, this is a bottom-up, inclusive approach that is **community-driven and community-centered**. Local communities, not the government, create and propose management solutions that support healthy nearshore marine ecosystems and sustainable harvesting practices. To learn more about the background and evolution of Holomua, visit <https://dlnr.hawaii.gov/holomua/faq/>

Where is Holomua Now?

The Holomua Marine Initiative launched the pilot process on Maui in October 2022. A 16-member Navigation Team that was nominated by the Maui community drafted a management proposal that supports sustainable harvesting practices and healthy reefs. The Navigation Team, comprised of local Maui community members, presented this draft proposal for the first time to the broader Maui community through Information Exchanges hosted in late September 2024. All comments received are now being carefully considered and, after the proposal is revised to reflect the priorities of the Maui community, further targeted meetings and eventually public scoping meetings will be held to share the revised proposal for more feedback. An overview of the process and where we are now on Maui is shown below.

Navigating Holomua





Holomua

Marine Initiative



What about the other islands?

The Maui Pilot Process is just the beginning for the Holomua Marine Initiative. Once completed, DAR will review the lessons learned from the process and adapt it for communities and regions on other islands willing and interested in collaborating with DAR. Holomua will go island by island to commit enough resources and time for each place and community.

How can I participate?

The best way to get involved with the Holomua Marine Initiative is from the very beginning when the community engagement process starts in your region or island. To find out more about ways to get involved, please visit

<https://dlnr.hawaii.gov/holomua/get-involved/> and sign up for the newsletter to get updates or follow us on social media!



@holomuamarine



@Holomua Marine Initiative



I ola nā kai o Hawai'i i ka nui i'a

So the waters of Hawai'i thrive with abundance

© Bert Weeks

Visit us at www.dlnr.hawaii.gov/holomua