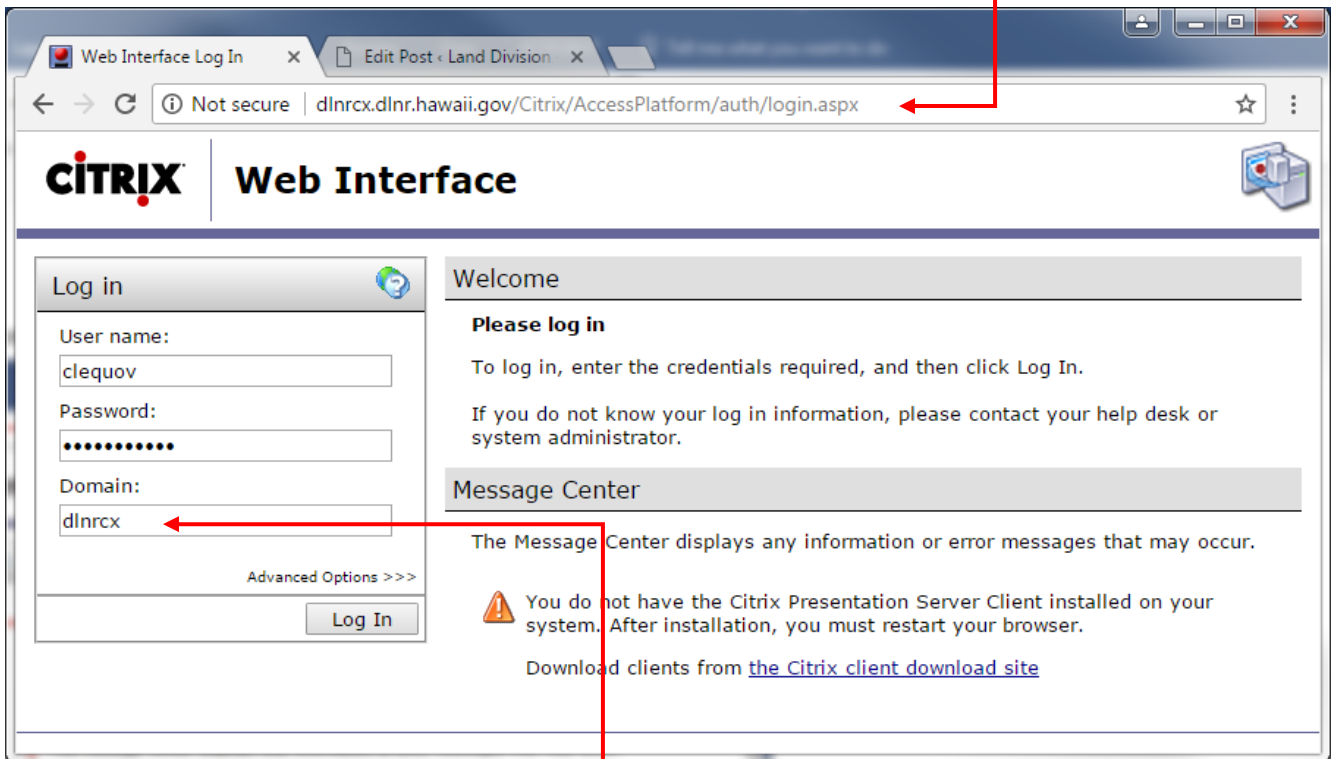


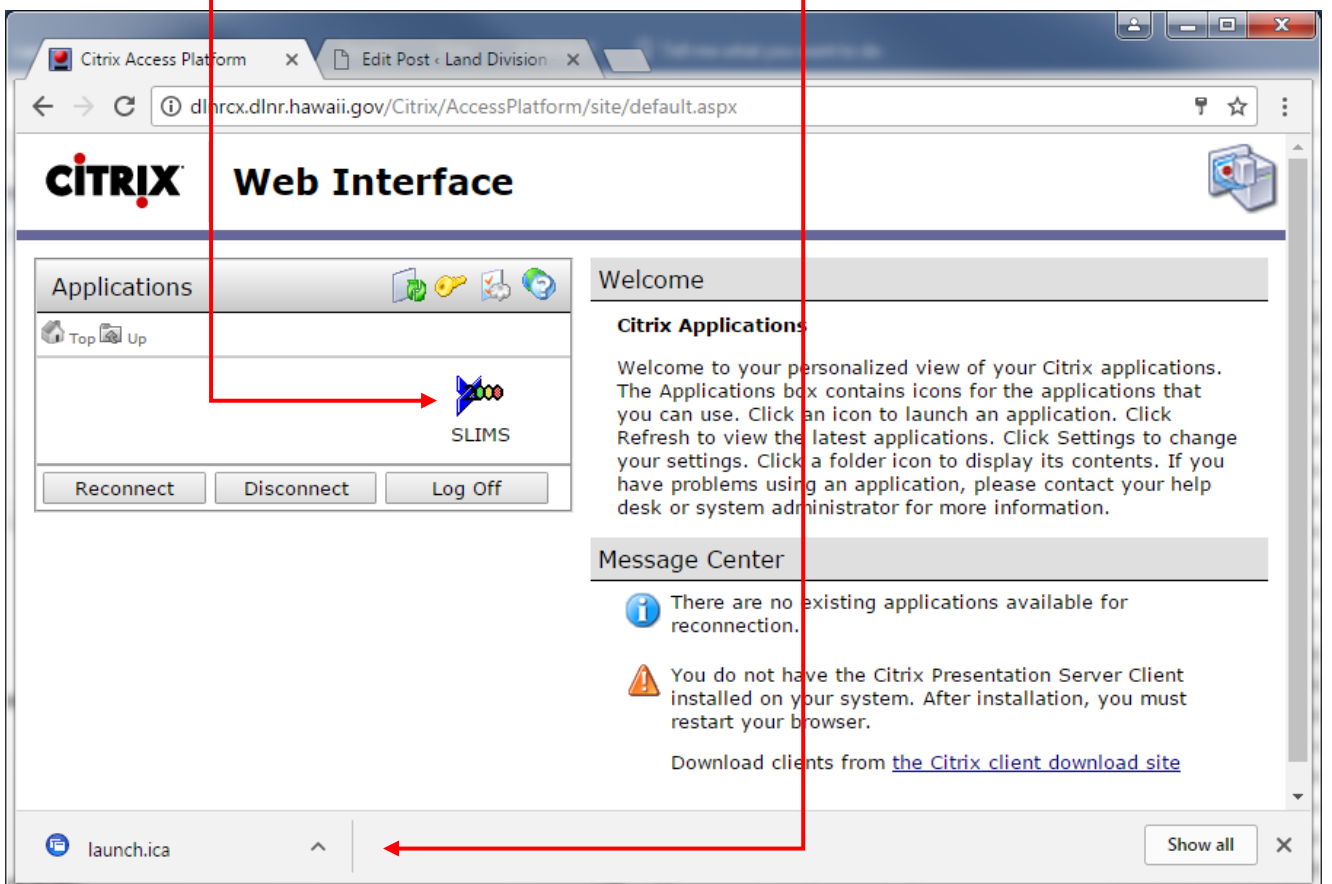
# How to log into SLIMS

Citrix Receiver is required to access SLIMS and can be downloaded at this URL: <https://www.citrix.com/downloads/>

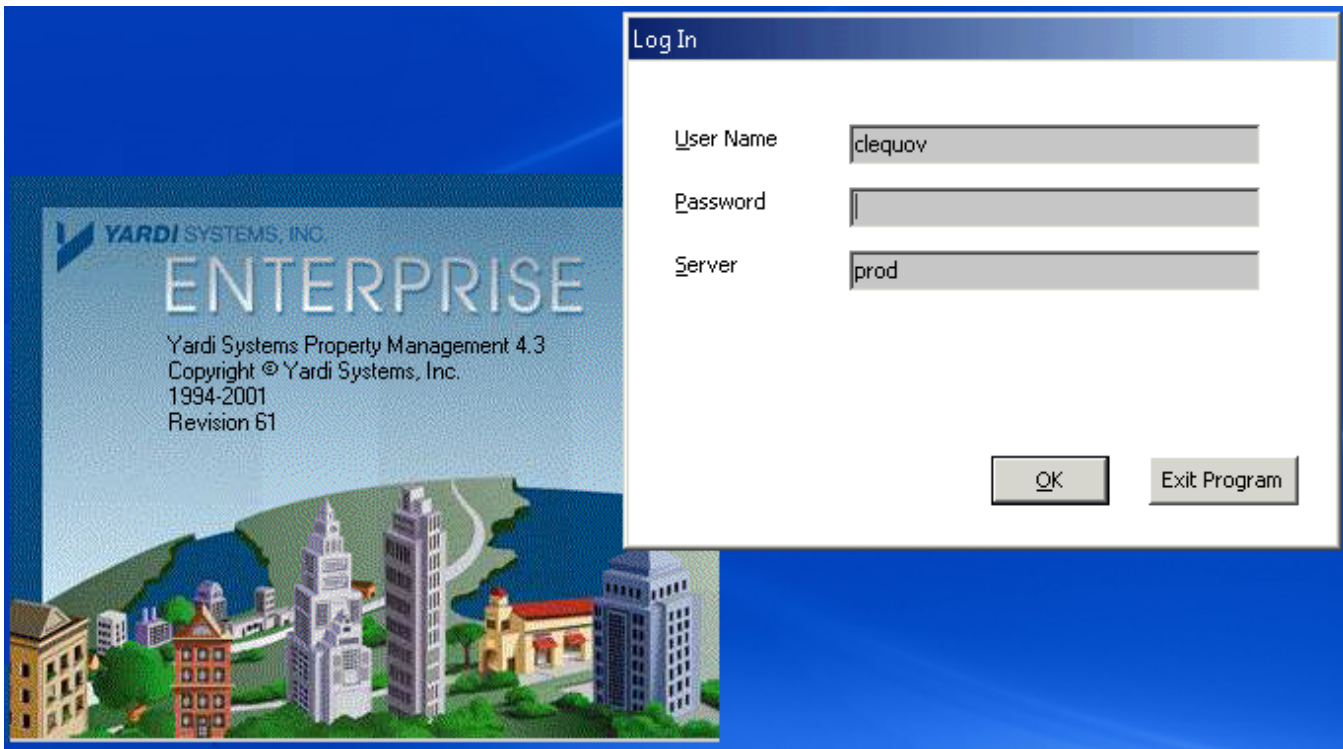
1. Open any web browser and go to this URL <http://dlnrxc.dlnr.hawaii.gov/Citrix/AccessPlatform/auth/login.aspx>. You will see the screen below.



2. Enter your assigned **username**, **password** and **dlnrxc** in the domain box to log onto Citrix. Upon successful log in, you will see a **SLIMS** icon. Click on the SLIMS icon. A small file **launch.ica** will be downloaded to your computer.



3. Click on this launch.ica file to launch SLIMS application. (it might take up to a minute to load). Then, you should see a Yardi Systems Enterprise and log in screen below.



4. Enter your SLIMS **username** and **password** and click the OK button. You will now be logged into SLIMS.

