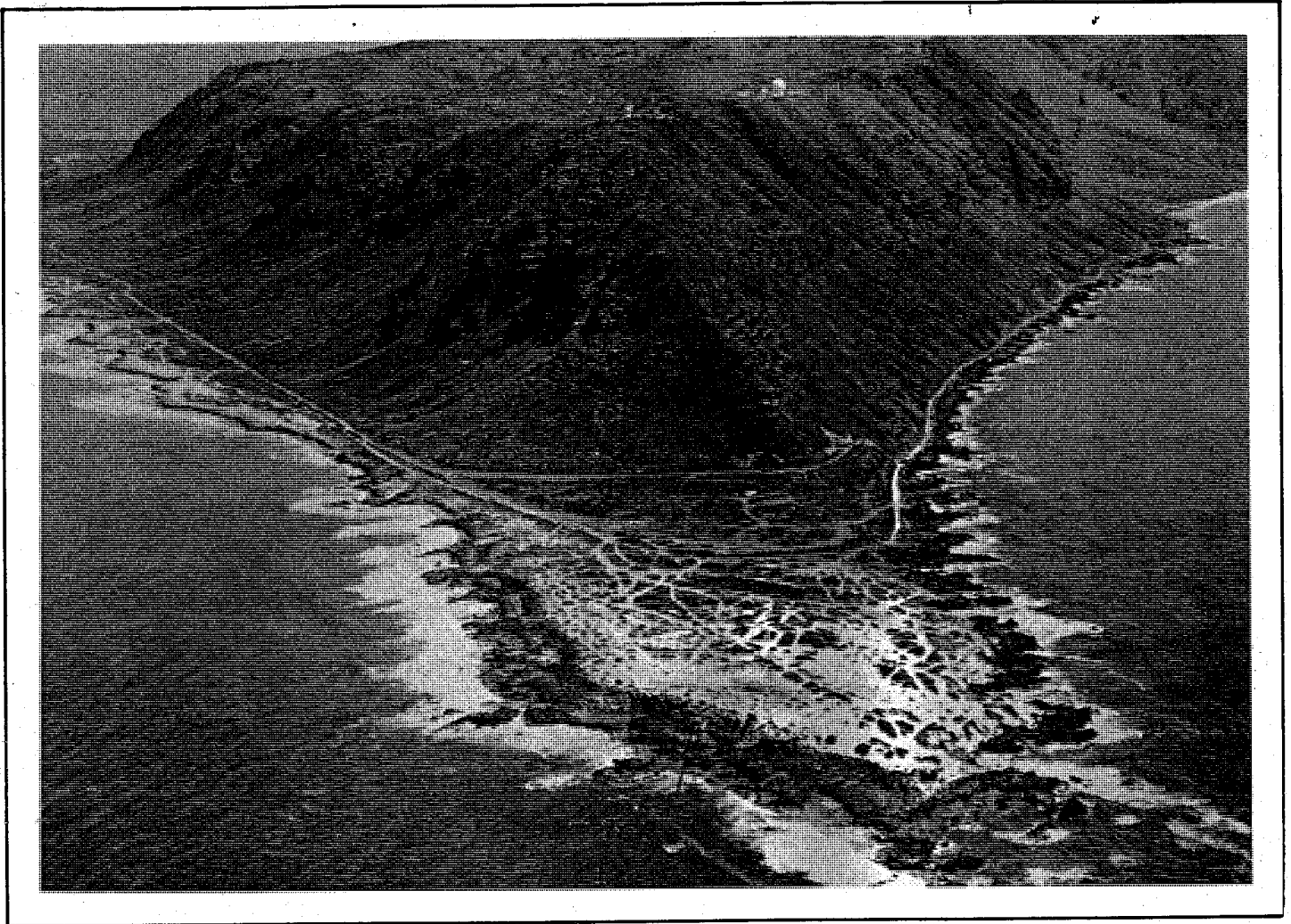


# Kaena Point State Park



## Conceptual Plan

Dept. of Land & Natural Resources  
Division of State Parks  
State of Hawaii

00096

# KAENA POINT STATE PARK CONCEPTUAL PLAN

## **PREPARED FOR**

DIVISION OF STATE PARKS, OUTDOOR RECREATION & HISTORIC SITES  
Department of Land & Natural Resources  
State of Hawaii

## **CONSULTANTS**

HAWAII DESIGN ASSOCIATES, INC.  
Landscape Architects / Planners

ANBE ARUGA & ISHIZU ARCHITECTS INC.  
Architects

DESIGN PLANNERS ASSOCIATES, INC.  
Planners

EIS CORPORATION  
Environmental Studies

MURODA & ASSOCIATES INC.  
Engineers

SEA ENGINEERING SERVICES INC.  
Oceanographic Studies

WILSON OKAMOTO & ASSOCIATES INC.  
Engineers



**hawaii design  
associates**

landscape architecture / planning

1110 university avenue suite 507  
honolulu hawaii 96814 telephone 955-6074 / 947-4327

April 24, 1978

Mr. William Y. Thompson  
Chairman and Member  
Board of Land and Natural Resources  
State of Hawaii  
Honolulu, Hawaii 96813

Dear Mr. Thompson:

It is our pleasure to submit to you the Conceptual Plan for the Kaena Point State Park.

The purpose of our study was to investigate the recreational potentials of the western most portion of the Island of Oahu, and to develop a plan to guide improvements and protect the region for present and future generations. Although the study encompassed over 15,700 acres, only 2,830 acres has been proposed for a State Park. The plan was completed after a comprehensive analysis was made of all the bio-physical, social, and institutional aspects. These factors were then correlated and reflected as the objectives of basic goals established by the Division of State Parks.

We firmly believe that this plan will contribute not only towards meeting the demands for public recreation, but will also preserve the integrity of the site and surrounding areas and assist the State in achieving its long range planning goals.

It has been a gratifying experience for this firm to have been associated with you, your staff, and the people who have contributed so much in planning for the future of Hawaii.

Respectfully submitted,

HAWAII DESIGN ASSOCIATES, INC.

Melvin S. Kuraoka

MSK:hst

# TABLE OF CONTENTS

## 1. INTRODUCTION

PURPOSE .....	1
PROCEDURE .....	1

## 2. THE PROCESS

<b>BACKGROUND RESEARCH</b> .....	4
LOCATION & SIZE .....	4
DESCRIPTION .....	4
ACCESS .....	4
CLIMATE .....	4
GEOLOGY/HYDROLOGY .....	4
TOPOGRAPHY .....	5
ARCHAEOLOGICAL & HISTORIC SITES .....	5
LAND OWNERSHIP & TENURE .....	5
LAND ACQUISITIONS .....	6
LAND USE PATTERNS .....	6
Historic	
Existing	
Surrounding Areas	
RELATED PLANNING POLICIES .....	8
Natural Area Reserves	
Special Management Zones	
State Land Use Designation	
City & County General Plan & Zoning	
State of Hawaii Comprehensive Open Space Plan	
<b>BACKGROUND ANALYSIS/EVALUATIONS &amp; CORRELATIONS</b> .....	11
RECREATIONAL DEMANDS .....	11
USERS .....	12
USER CONSTRAINTS .....	12
USER VALUES, CONFLICTS & CONCERNS .....	12
RECREATIONAL POTENTIALS .....	13
Coastal Sector	
Upland Mountain Sector	
Makua Valley	
DEVELOPMENT CONSTRAINTS & DESIGN CONSIDERATIONS .....	16
Climate	
Tsunami Flooding & High Surf Conditions	
Fire	
Soils & Erosion	
Slopes	
Archaeological & Historic Sites	
Flora & Fauna	
Infrastructure	
Access	
Coastal Section	
Upland Mountain Sector	
DESIGN CAPACITY .....	21
Coastal Area	
Central Upland Area	
Peacock Flats	
OTHER LAND USES .....	26
Agriculture	
Timber Production	
Tele-Communications & Tracking Systems	
Military Operations within Makua Valley	
Wind Powered Electric Generation	
Intra-Regional/Island Transportation Facilities	
RECOGNITION OF BACKGROUND WEAKNESSES .....	27
Topographic Studies	
In-depth Socio-economic Studies	
Hydrologic Studies	
Soil Studies	
Flora Studies	

Fauna-Studies	
In-depth User Surveys	
Oceanographic Survey	
Historic Archaeological & Legendary Studies	
UNRESOLVED ISSUES .....	27

### 3. THE PROGRAM

PHILOSOPHY.....	29
PARK GOALS & OBJECTIVES .....	29

### 4. THE PLAN

PARK BOUNDARY .....	32
COASTAL SECTOR .....	32
UPLAND MOUNTAIN SECTOR.....	32
MANAGEMENT PROPOSALS .....	32
COASTAL SECTOR .....	32
UPLAND MOUNTAIN SECTOR.....	32
COORDINATION WITH OTHERS.....	34
DEVELOPMENT & MANAGEMENT RECOMMENDATIONS BY AREAS .....	35
COASTAL SECTOR .....	35
Makua & Keawaula (Yokohama Bay) Beaches	
Leeward Coastline	
Kaena Point	
Windward Coastline	
Areas Surrounding Camp Erdman	
UPLAND MOUNTAIN SECTOR.....	38
Peacock Flats	
Nike Site	
Central Upland Sector	
Remote Open Sector	

### ANTICIPATED ENVIRONMENTAL IMPACTS AND MITIGATIVE

MEASURES TO MINIMIZE ADVERSE IMPACTS.....	40
MAKUA & KEAWAULA (YOKOHAMA BAY) BEACHES .....	40
LEEWARD COASTLINE .....	42
KAENA POINT .....	43
WINDWARD COASTLINE .....	44
AREAS SURROUNDING CAMP ERDMAN.....	45
PEACOCK FLATS .....	46
NIKE SITE .....	47
CENTRAL UPLAND SECTOR .....	48
REMOTE UPLAND SECTOR .....	49
PROJECT PHASING AND FUNDING .....	50

### 5. BACKGROUND DATA

ADDITIONAL INFORMATION .....	52
CLIMATE .....	52
Temperature	
Winds	
Humidity & Climate	
Rainfall	
GEOLOGY .....	54
HYDROLOGY .....	54
SOILS .....	55
Soil Suitability for Cultivated Agriculture	
Soil Limitation Ratings for Development	
FLORA & FAUNA .....	57
Flora	
Fauna	
Marine Life	
TSUNAMI/FLOOD ZONES .....	61
NEAR SHORE & OFFSHORE CONDITIONS.....	61
WATER QUALITY .....	61
ARCHAEOLOGY .....	62

INFRASTRUCTURE .....	67
Roads	
Sewage	
Water	
Electricity	
Communication	
Public Services	
PAST PROPOSALS .....	71
Highway	
Peacock Flats	
Wind-Powered Electric Generation	

## 6. APPENDIX

CHECKLIST OF FAUNA .....	86
CHECKLIST OF PLANTS .....	86
REFERENCES .....	108
ACKNOWLEDGEMENTS .....	110