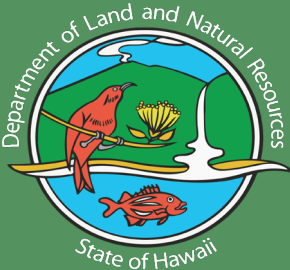


POLOLŪ TRAILHEAD MANAGEMENT PLAN

Virtual
Community Meeting

February 6, 2024

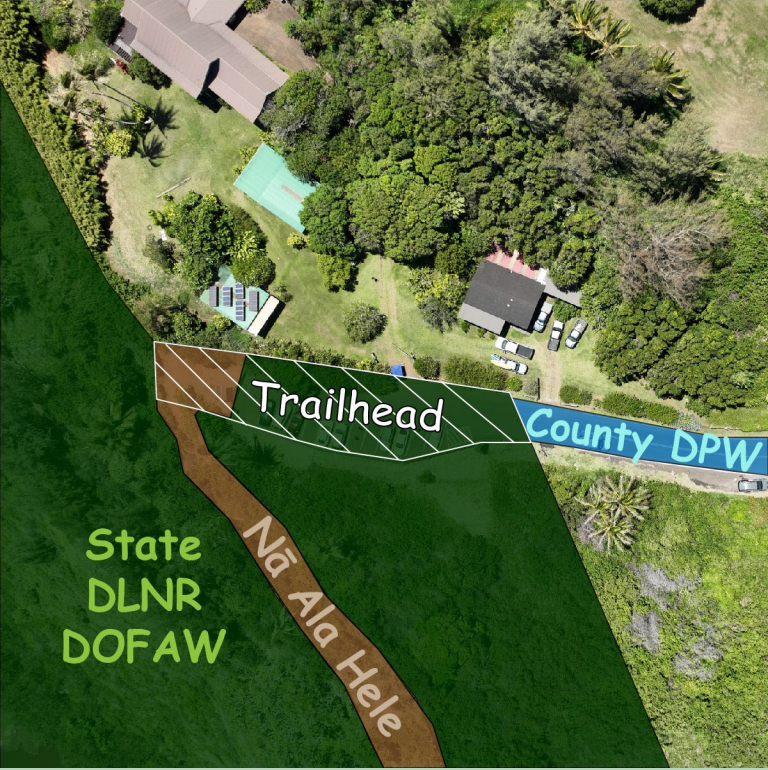


AGENDA

- ❖ Introductions
- ❖ Presentation
 - Overview of the Draft Plan
 - Next Steps
- ❖ Community Comments
- ❖ Closing



PROJECT BACKGROUND



PLANNING PROCESS



NOVEMBER 2022
INFORMATION GATHERING:
RESOURCES, ISSUES, & CONCERNS

COMMUNITY TALK STORIES
IDENTIFY COMMUNITY VISION & GUIDING PRINCIPLES

APRIL 2023
COMMUNITY MEETING:
RESOURCES, ISSUES & COMMUNITY VISION

IDENTIFY ALTERNATIVES & SOLUTIONS

DEVELOP DRAFT PLAN

COMMUNITY TALK STORIES
JANUARY 2024
COMMUNITY MEETING:
DRAFT PLAN

DEVELOP PRE-FINAL PLAN

COMMUNITY MEETING:
PRE-FINAL PLAN

DEVELOP FINAL PLAN

ENVIRONMENTAL REVIEW PROCESS

Pololū Trailhead Management Plan - Community Meeting on Draft Plan

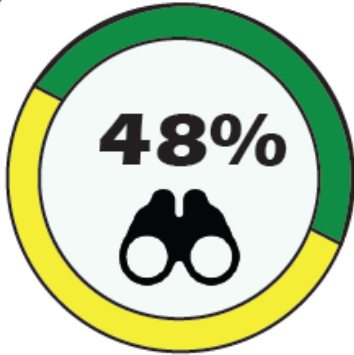
Wahi Pana

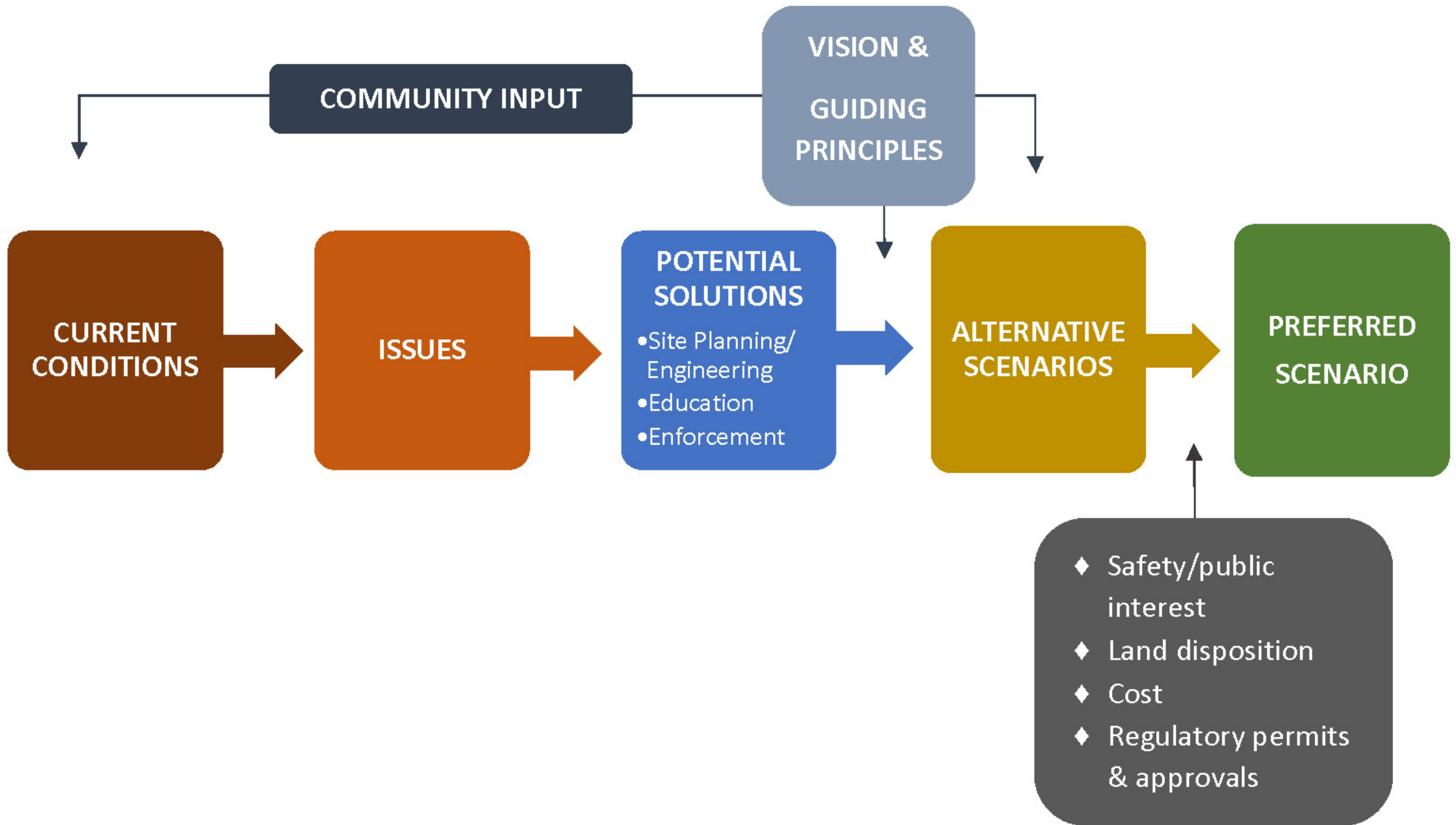


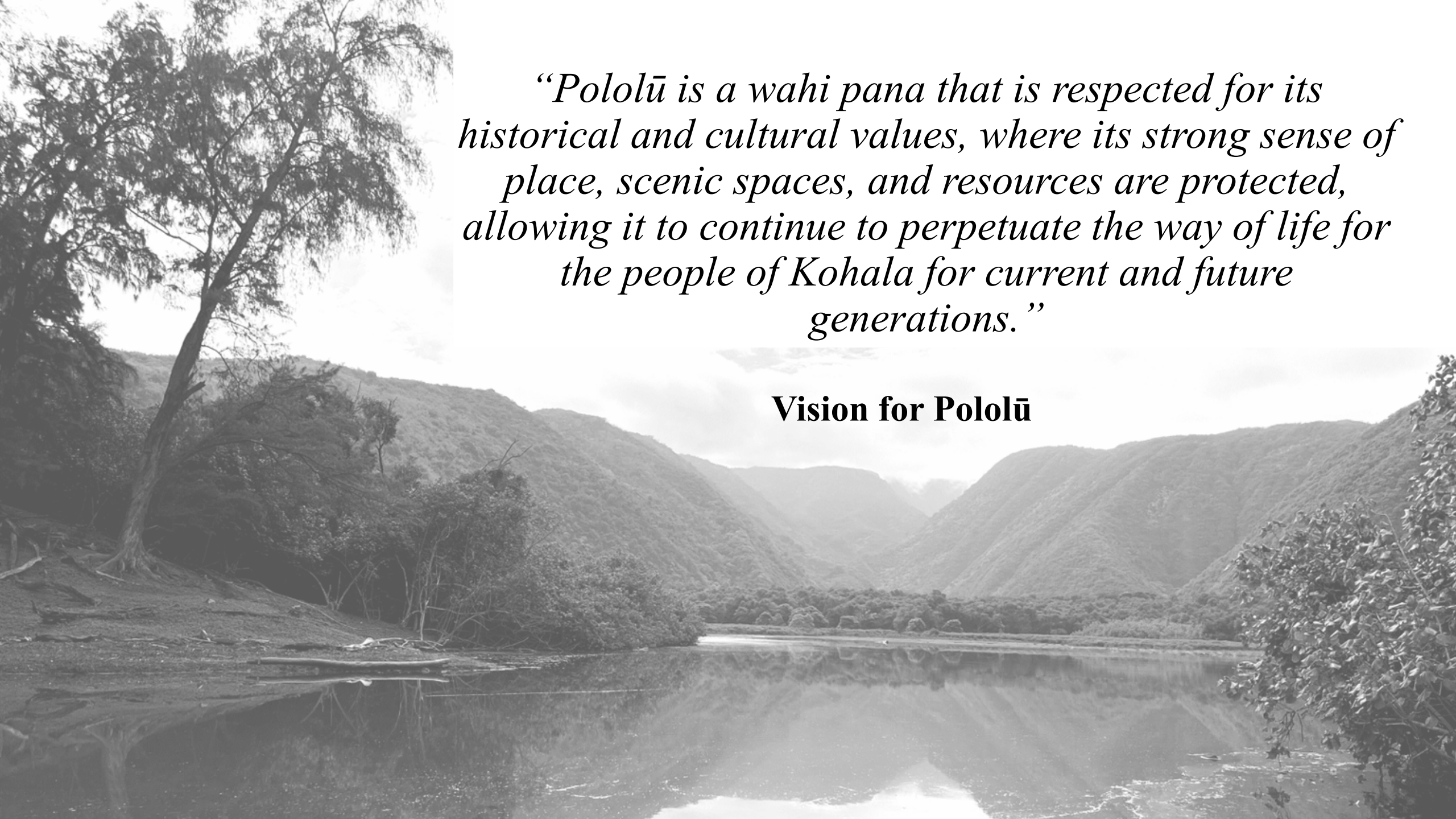


JANUARY
2023
1,482
VISITORS

AVERAGE
597
DAILY
VISITORS







“Pololū is a wahi pana that is respected for its historical and cultural values, where its strong sense of place, scenic spaces, and resources are protected, allowing it to continue to perpetuate the way of life for the people of Kohala for current and future generations.”

Vision for Pololū

GUIDING PRINCIPLES

Protect the place and its environment first.



Prioritize the needs of the local community.



Maintain the rural character of Pololū and Makanikahio and keep it as a wilderness area.



Highlight the cultural significance of Pololū.



Educate visitors on the environmental conditions & cultural significance of Pololū.



Minimize the development footprint.



“LEAVE IT AS IS”

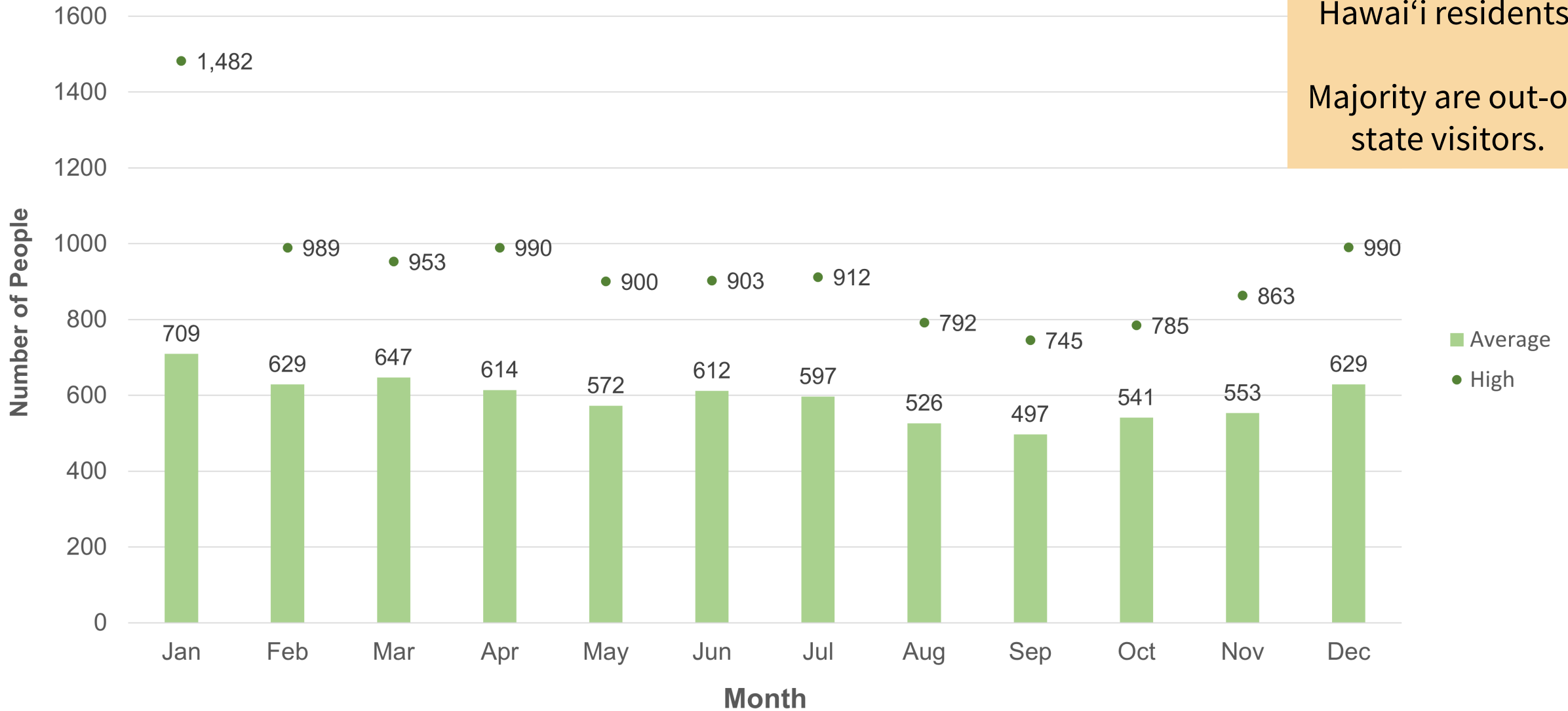


AVERAGE = 597 PEOPLE PER DAY

These *visitor counts* include both out-of-state visitors and Hawai'i residents.

Majority are out-of-state visitors.

Average Number of Total Daily Pololū Area Users per Month for 2023



POTENTIAL SOLUTIONS

Continue Trail Steward Program



**TRAIL
STEWARD
PROGRAM
CREATED IN
SUMMER OF
2021**



RESCUES OF

18

2021

10

2022



2

2023

Challenges:
Dedicated funding
beyond 2026 is
uncertain.

Designated Cultural/Special Access



Parking-related

- Designated parking stalls
- Dedicated stalls for Hawai‘i residents
- “No Parking” areas
- Parking enforcement
- Managed reservation system



Managed Reservation System

- Advanced parking reservations required for non-Hawai'i residents.
- A fee would apply for reservations.
- Parking available for Hawai'i residents on a first come, first served basis.
- Revenue generated to be reinvested for the stewardship of Pololū.



Portable Toilets



Historic Trail Restoration



ISSUES

POTENTIAL SOLUTIONS



Continue Trail Steward Program

Portable toilets near the trailhead

Continue Trail Steward Program

Designated parking stalls and a walking path to the trailhead

Parking reservation system for non-Hawai'i residents

Continue Trail Steward Program

Managed parking reservation system

Historic trail restoration & maintenance

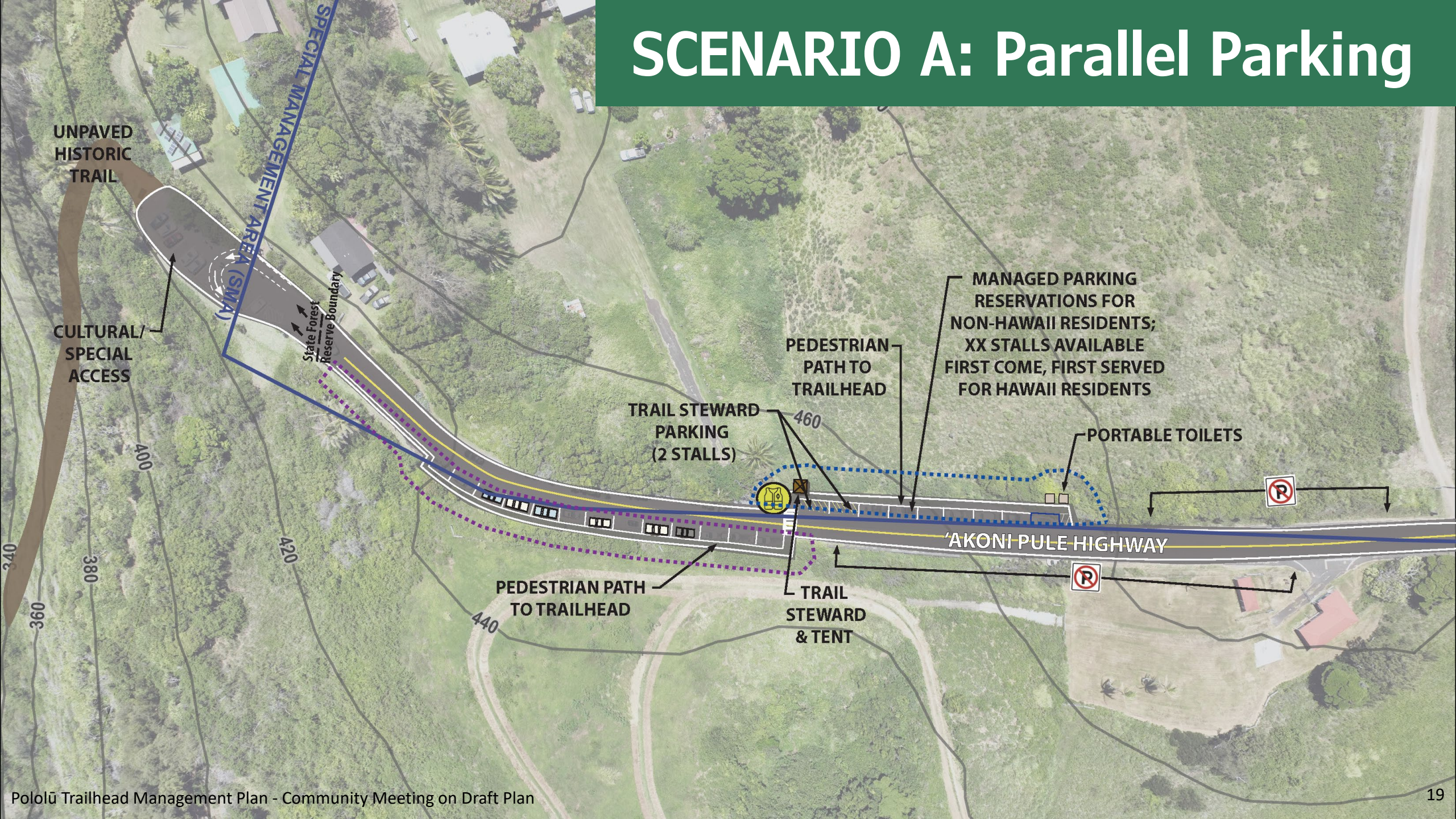
"No Parking" zones

Dedicated cultural / special access at the trailhead

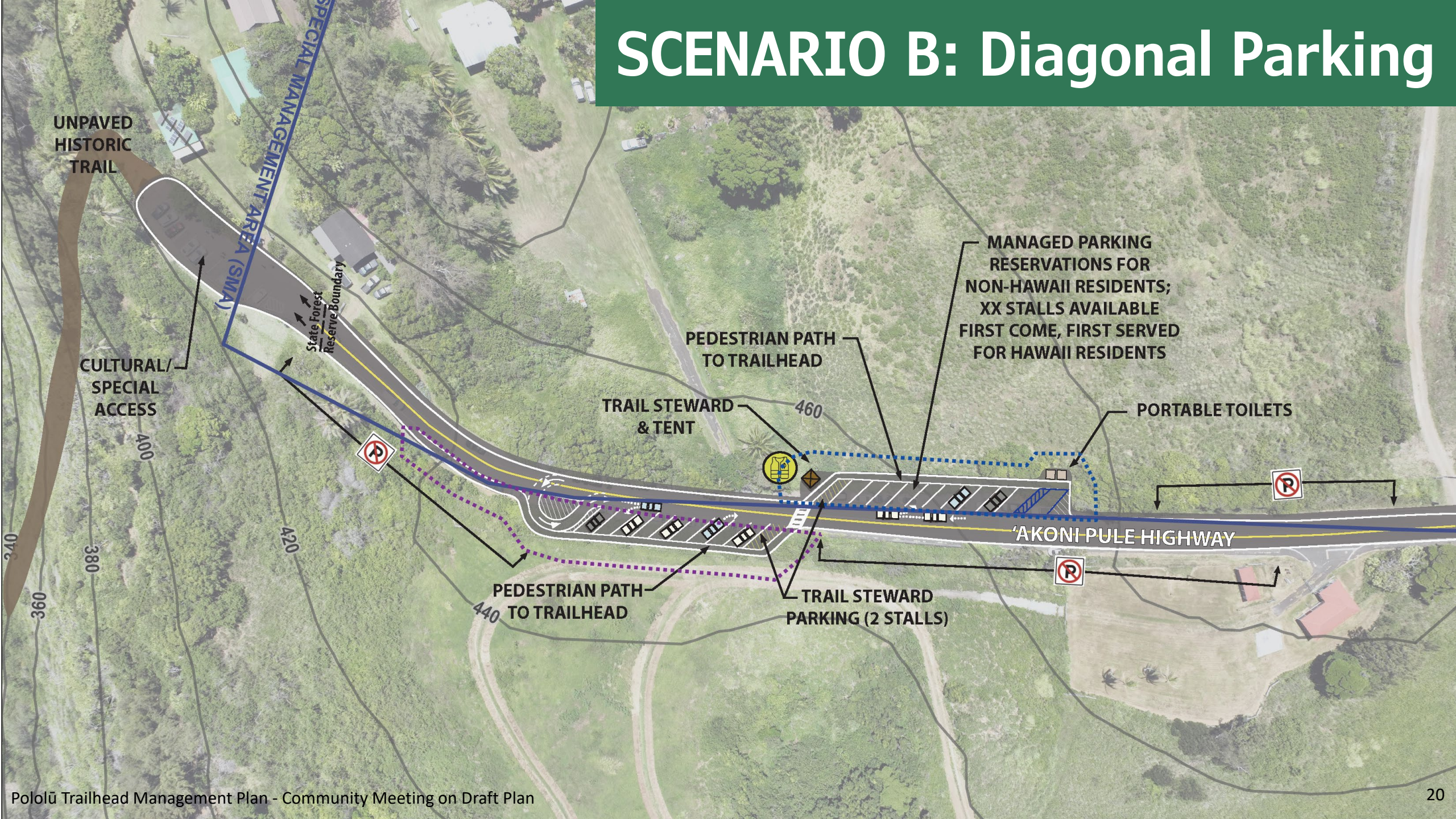
Partnered enforcement with HPD, DOCARE, & Trail Stewards

Dedicated parking for Hawai'i residents

SCENARIO A: Parallel Parking



SCENARIO B: Diagonal Parking



UNPAVED HISTORIC TRAIL

SPECIAL MANAGEMENT AREA (SMA)

State Forest Reserve Boundary

CULTURAL/SPECIAL ACCESS

PEDESTRIAN PATH TO TRAILHEAD

TRAIL STEWARD & TENT

460

MANAGED PARKING RESERVATIONS FOR NON-HAWAII RESIDENTS; XX STALLS AVAILABLE FIRST COME, FIRST SERVED FOR HAWAII RESIDENTS

PORTABLE TOILETS

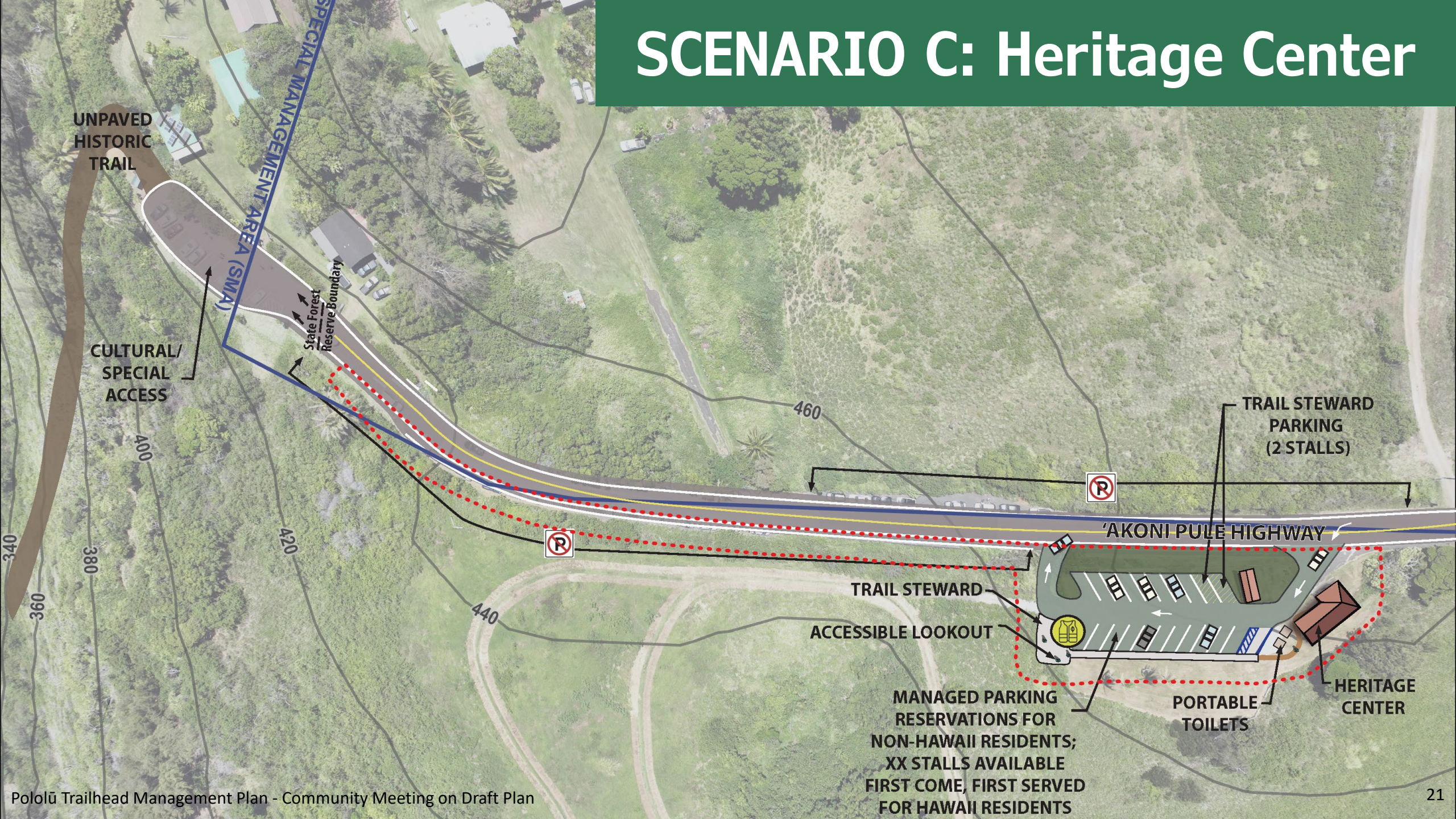
'AKONI PULE HIGHWAY

PEDESTRIAN PATH TO TRAILHEAD

440

TRAIL STEWARD PARKING (2 STALLS)

SCENARIO C: Heritage Center



UNPAVED HISTORIC TRAIL

SPECIAL MANAGEMENT AREA (SMA)

CULTURAL/SPECIAL ACCESS

State Forest Reserve Boundary

460

P

TRAIL STEWARD PARKING (2 STALLS)

'AKONI PULE HIGHWAY

TRAIL STEWARD

ACCESSIBLE LOOKOUT

MANAGED PARKING RESERVATIONS FOR NON-HAWAII RESIDENTS; XX STALLS AVAILABLE FIRST COME, FIRST SERVED FOR HAWAII RESIDENTS

PORTABLE TOILETS

HERITAGE CENTER

440

420

400

380

360

340

IMPLEMENTATION

Implementation Action Item <i>Agency/Entity Responsible</i>	Timeline			
	Near-term	Mid-term	Long-term	Ongoing
LAND ACQUISITION				
Initiate discussions with the landowner regarding land disposition. <i>DLNR DOFAW, Surety</i>				
Acquire land. <i>DLNR DOFAW, Surety</i>				
SITE ENGINEERING & PERMITS				
Procure professional services to plan, design, and construct capital improvements, including seeking required permits and approvals. <i>DLNR DOFAW/Engineering</i>				
Coordinate with County DPW on crosswalk and other measures. <i>DLNR DOFAW, County DPW</i>				
OPERATIONAL & SUPPORTING MEASURES				
Procure services for portable toilets. <i>DLNR DOFAW</i>				
Continue to revise Nā Ala Hele rules & seek BLNR approval. <i>DLNR DOFAW</i>				
Seek funding for trail stewards beyond year 2026. <i>DLNR DOFAW, State Elected Officials</i>				
Add a parking violation surcharge for illegal parking along 'Akoni Pule Highway through County Ordinance. <i>DLNR DOFAW, County Council</i>				
Coordinate on enforcement efforts; secure funding for partnered enforcement among entities. <i>DLNR DOFAW & DOCARE, County Police Department</i>				
Support community initiatives to steward resources. <i>Community, DLNR DOFAW</i>				

NEXT STEPS – DRAFT PLAN REVIEW

1. Review the Draft Plan here: bit.ly/pololu_planning
2. Submit comments. Deadline - March 1st:
 - ❖ E-mail: gabrielle@townscapeinc.com
 - ❖ Online: bit.ly/pololu_planning
 - ❖ Mail to: 900 Fort Street Mall, Suite 1160
Honolulu, HI 96813



An aerial photograph of a tropical coastline. In the foreground, the ocean is a deep blue-green with white-capped waves breaking onto a dark, pebbly beach. A dense line of green trees borders the beach. Behind the trees, rolling green mountains rise up, their slopes covered in lush vegetation. The sky is a clear, bright blue with a few wispy white clouds. The word "MAHALO" is overlaid in the center of the image in a large, light green, sans-serif font.

MAHALO