

# DLNR-DOFAW Game Bird Crop Collection

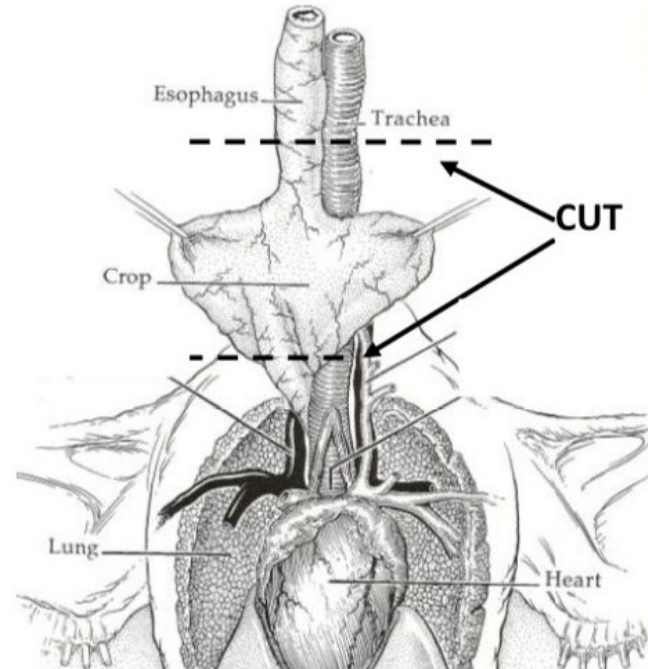
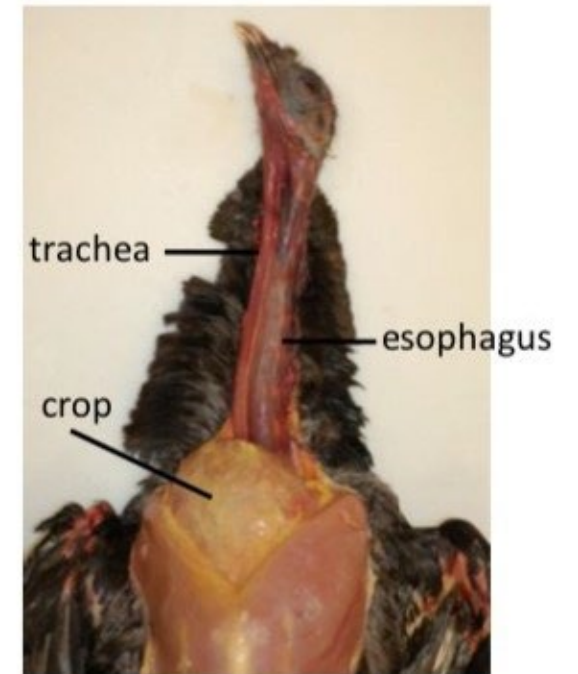
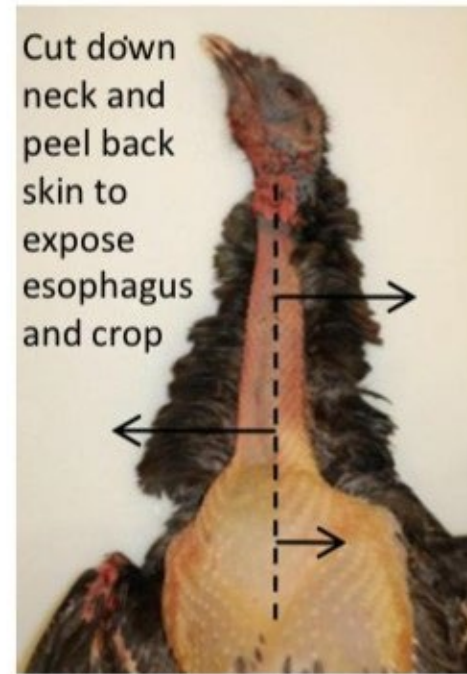
## Instructions for Removing Crop (repeat for each bird)

1. Label with a permanent marker a ziplock bag with your **name** (optional), **date of harvest**, **bird species**, **location where bird was harvested**, **sex** (if known). One labeled bag per bird crop.
2. With the bird lying on its back, pluck feathers to expose the neck then make an incision lengthwise down the neck from just below the chin to midbreast. Peel back skin to expose the trachea, crop, and esophagus. The esophagus is thin and pliable compared to the more rigid trachea. The crop, located at the base of the neck, is a thin transparent sack when empty, but may contain food (see photos).
3. Preserve crop and esophagus by placing in the labeled freezer bag and putting on ice or freezing as soon as possible to prevent fermentation of crop contents.

## Submittal Options

1. Drop off crop samples in labeled bags to a DOFAW staff or volunteer if present at the hunter check station.
2. Drop off preserved crop in labeled bag at the DOFAW Hilo office (19 E. Kawili St. Hilo, Hawaii 96720) from 8:00am to 4:30pm Monday-Friday.
3. Scan the QR code to the right to make an online submission of information and a photo of the crop contents. Please follow the additional instructions on the online form.

Please contact DOFAW Hilo office (808) 974-4221 if you have more questions



Scan QR code for online submission of crop content and information