

PBR HAWAII & ASSOCIATES, INC.

KIMI MIKAMI YUEN, LEED® AP BD+C
President / Chairperson

VINCENT SHIGEKUNI
Executive Vice-President / Principal

GRANT T. MURAKAMI, AICP, LEED® AP BD+C
Executive Vice-President / Principal

CATIE CULLISON, AICP
Senior Vice-President / Principal

TOM SCHNELL, AICP
Vice-President / Principal

MARC SHIMATSU, PLA, ASLA
Principal

RAYMOND T. HIGA, PLA, ASLA
Associate Principal

DACHENG DONG, LEED® AP
Associate Principal

NATHALIE RAZO
Associate Principal

ANN MIKIKO BOUSLOG, PhD
Director of Land Economics & Real Estate

RAMSAY R. M. TAUM
Cultural Sustainability Planner

ETSUYO KILA
Senior Associate

GREG NAKAI
Senior Associate

BRADLEY FURUYA, AICP
Associate

C.R. 'IMIPONO WICHMAN
Associate

THERESA DEAN
Associate

R. STAN DUNCAN, PLA, ASLA
Chairman Emeritus

RUSSELL Y. J. CHUNG, PLA, FASLA
Principal Emeritus

THOMAS S. WITTEN, FASLA
Principal Emeritus

W. FRANK BRANDT, FASLA
Founding Partner

1001 Bishop Street, Suite 650
Honolulu, Hawai'i 96813-3484
Tel: (808) 521-5631
Fax: (808) 523-1402
E-mail: sysadmin@pbrhawaii.com

printed on recycled paper

MEETING NOTES

DATE: June 12, 2025
MEETING DATE: May 21, 2025
TEAM PRESENT: Jackson Bauer, NAH Hawai'i Island Specialist
Aaron Lowe, NAH O'ahu Island Specialist
Kawika Smith, NAH Kaua'i Island Specialist
Marigold Zoll, DOFAW Branch Manager, O'ahu
Catie Cullison, PBR HAWAII
Theresa Dean, PBR HAWAII
Makena Bassett, PBR HAWAII
Kirra Lindman, PBR HAWAII
DISTRIBUTION: Public
SUBJECT: Nā Ala Hele Virtual Public Open House Meeting Notes

Summary

A virtual public meeting was held on Wednesday, May 21st at 5:00 p.m. to solicit public input on the vision, goals, and priorities of the Nā Ala Hele Program Plan. A total of one hundred and seventy-six (176) people registered for the event and sixty-eight (68) people attended the meeting. The goals of the Nā Ala Hele Program Plan Virtual Public Open House were as follows:

1. To provide public education about the role of the Nā Ala Hele Trail and Access Program.
2. To inform the public on the broad mandate of the Nā Ala Hele Trail and Access Program and emphasize the kuleana of every individual to steward Hawai'i's natural resources
3. Focus on public priorities for strategic direction of the plan and achieve a general consensus on what should be invested in within the program.
 - b) Present agency vision statements to solicit feedback from the community on shared goals
 - c) Provide multiple interactive engagement tools to solicit feedback and insight into public priorities and values

A summary of the items discussed and feedback obtained is detailed herein.

About the Department of Land and Natural Resources, Division of Forestry and Wildlife, Nā Ala Hele Trail and Access Program

In alignment with the goal 3 of the virtual public open house, the project team began by encouraging Hawai'i to envision the successful future operations of the Nā Ala Hele Trail and Access Program. Meeting facilitators explained that the planning process is forward focused, and their voices would guide the program into the future.

Participants were asked to envision the future and think strategically about the program by using the following prompt: "In 20 years, you read a headline in the local newspaper about the Nā Ala Hele program. What would you like it to say?" The responses were added to the Zoom chat, and were as follows:

- *Reflecting the current ways that society is shifting in their understanding of indigenous lifeways and putting them in policy.*
- *Headline to see would be it protects and provides to many wonderful places in Hawai'i*
- *Headlines for 2045: ***"The 20-year anniversary of mauka to makai trail connecting Kawaihae & Kamuela and into Waimea Ulu Lā'au Park invites all." ***"Ranch lands and private owners celebrate public access and abundant natives and diversity." ***"Alalā thriving on Hawai'i Island and Maui thanks to Nā Ala Hele."*
- *Headline: Nā Ala Hele facilitates connection to āina and something along the lines of traditions and mo'olelo along the ala have become part of everyday life in contemporary Hawai'i*
- *Dream Headline: "Hawai'i's DLNR Nā Ala Hele program wins nationwide award as best stewards of balancing environmental preservation with public access."*
- *Headline: Managed Public Trails Double Across the State in Last Decade, Are Well Funded*
- *Nā Ala Hele: Huaka'i Hele: NAH to host mo'olelo on the trails they manage with culturally accurate information and traditional protocols workshop*
- *Headline: Ease of Access Established for all Public State Lands*
- *Newspaper: Green Fee Raised Sufficient Funds to Reforests All Trails with Native Plants Improving Aquifer Recharge, Biodiversity, and Biocultural Relationships*
- *STATE HIRING MORE TRAIL STEWARDS*
- *Headline: Nā Ala Hele Trail Wins Cultural Landmark Distinction*

Defining a Successful Plan Update

In alignment with the Public Open House goals 1 and 2, the project team walked people through the organization of the Nā Ala Hele Program and its position within DLNR. The presenter talked about what a program plan is expected to accomplish and what it will not be addressed and then asked participants to respond to the current program plan vision and goals through a series of polling questions. The first poll question asked participants, "What does a successful program plan look like to you?" The following responses were recorded.

- *Confusion regarding 5 goals of NAH program "organization" verbiage- it was clarified that the organization refers to being organized, and that NAH is already an established organization*
- *In 20 years, NAH has established itself as the foremost expert on management and protection of historic Hawaiian trails and the management of public access mauka and makai in cooperation with communities and other government agencies.*
- *It should be easier to get permits for stewardship and community events. The DLNR already has online infrastructure for commercial beach activity and camping*
- *If 500-600 people a day are going into Pololū charge for the privilege and get more trails open that are similar.*
- *Burning trail issues: loving places to death; needing to look into public access permit systems for sensitive environments; communities that have legitimate concerns re: the over-harvesting and over-crowding; and the lack of ability to control social media's encouragement of accessing places that are not actually open due to private ownership and safety issues.*

- *provide a framework for guiding responsible and sustainable management of Hawai'i's trails will provide a balance between all types of trail users to improve overall public health and management of the environment.*
- *Functional. Actionable. Aspirational. Realistic.*
- *A successful program plan will address climate change and provide relief to trail visitors.*
- *Maintain all current trails, protect access to current trails, establish new trails*
- *For me a successful plan will "Prioritize stewarding trails that are safe to both the individual and the trail, and biocultural restoring the region with native plants."*
- *A successful plan will include trails for walkers, bicycle riders and horseback riders. Ways to maintain the trails and ways to meet regularly.*
- *A successful plan will integrate NAH with other intermodal transportation facilities to link cultural and historic resources. Address access and use issues. Expand uses/users/mixed use. Establish fees for use. Better facilities and maintenance. Better enforcement of misuse. Better requirements for use for tourists. Better response to land needs.*
- *Easier access for established user groups, specifically nonprofits. Allowing people who want to help, help and not create barriers for stewardship.*
- *Recreational access for all, including horseback riding options, trailer parking*
- *Establish regenerative trail practices (sustainable not adequate). staunch invasives, promote planting, stewardship as citizens Expand capacity to meet all the objectives*
- *More hiking trails on Maui*
- *Add trails and be able to manage/take care of all of the trails. Add volunteer opportunities on Maui.*
- *Allows people of different ages and abilities to safely get access to nature without degrading it.*
- *private landowner considerations are important, especially adjacent landowners*
- *Expand organized volunteer trail maintenance opportunities*
- *Creating a plan for financial sustainability to hire sufficient personnel and be funded to fully manage current trails and create new trails.*
- *Incorporate Hawai'ian protocols like Oli for staff to engage in while doing trail maintenance*
- *Expanded trails, more trails and upkeep of them*
- *Balances conservation needs (particularly around wildlife, but also plants) with access for all.*
- *Keep well maintained trails accessible across the state and expand the inventory while keeping it nice.*
- *Expand trail network.*
- *A successful plan will increase the number of access points and trails*
- *A successful plan will maintain the trails and access with proper signage, including cultural and flora/fauna. It will also include facilities & parking.*
- *A successful program will greatly expand a somewhat limited trail system, particularly on neighboring islands.*
- *Provide enduring support to trail maintenance and upkeep to ensure the legacy of O'ahu's trail can continue*
- *A successful Nā Ala Hele program plan that best supports Hawai'i's mountain bike community would prioritize expanding legal trail access, sustainable development, and collaboration with local stakeholders. This includes officially designating new and existing trails for mountain bike use, securing access agreements with public and private landowners, and implementing modern trail-building practices.*

- *A successful program plan will address what Nā Ala Hele should provide the public with access, accountability, safety, and opportunities*
- *Trail maintenance*
- *Continue keeping access open and maintaining trails*
- *A successful plan would ensure that all trails receive proper work/care and all knowledge on them would be available to all hikers*

Strategic Direction of the Program

The University of Hawai'i at Mānoa Recreational Trails Research Project team was then introduced by Kristen Harmon, and the various aspects of the research, including trail vulnerability assessment, trail actions decision analysis, trail recreational economics, were briefly outlined for participants. Feedback regarding this aspect of the presentation was as follows:

- Ray Watson: Part of the States transient accommodation tax should directly go to trails for maintenance and Hawai'i Tourism Authority should have a campaign about stewardship approved by Nā Ala Hele.

Breakout Room Discussions

At the end of the formal presentation, meeting participants were asked to join one of four breakout groups which were organized by island:

Breakout Group 1: Maui Nui

Breakout Group 2: Hawai'i Island

Breakout Group 3: Kaua'i

Breakout Group 4: O'ahu.

Each breakout group had a discussion facilitator from the project team which guided the discussion around 4 main questions:

- (1) What needs (recreational, resource, or other) should be addressed in the Program Plan Update that are currently overlooked or underserved? – Think broader than one trail or issue.
- (2) What do you anticipate will be a future need or issue with trails and access that the Program should be prepared to address?
- (3) What are the potential untapped funding sources for the Program? Are you comfortable paying user or permit fees?
- (4) What is the Program currently doing well? What should be replicated across the islands or invested in as the Program moves into the future?

A summary of the key takeaways from each breakout group are as follows:

Breakout Group 1: Maui Nui

Question 1 What needs (recreational, resource, or other) should be addressed in the Program Plan Update that are currently overlooked or underserved? – Think broader than one trail or issue.

Responses:

- Participant would like to see a lower barrier of entry for user groups to do service and stewardship of trails. Examples that were given illustrating how the State has established online permitting were camping permits online and commercial use permits on beaches.
- Staffing issues (shortages):
 - Staff are forced to wear too many hats, including having to fill in for open positions.
 - Need qualified staff rather than promoting or moving unqualified people into essential positions.
- Need more/better access to public lands that are inaccessible due to private land holdings. Conservation lands held by the state are “landlocked” behind private property and trails to these lands are blocked off.
- Suggestion for use of inmate crews for trail maintenance. Valuable training and a needed service.
- When quiet title actions take place, the state doesn’t come forward as they should.
- (Question): Is the state out of compliance with their RTP requirements?

Question 2 What do you anticipate will be a future need or issue with trails and access that the Program should be prepared to address?

(Participants ran out of time to answer this question)

Question 3 What are the potential untapped funding sources for the Program? Are you comfortable paying user or permit fees?

Responses:

- Willingness to pay – mixed responses – some said they would be okay with paying for access to certain trails or parks. One person voiced that they really value free and open trails. One person voiced their opinion that paying a fee helps create a sense of ownership and holds people accountable.

Question 4 What is the Program currently doing well? What should be replicated across the islands or invested in as the Program moves into the future?

Responses:

- Maui has the most specific bike trails
- Lāhainā Pali and Waihe‘e Ridge are always very well maintained
- NAH staff have been great champions for trails
- The bike clubs on Maui have had success and even built a bike park for fire survivors in Napili.

Breakout Group 2: Hawai'i Island

Question 1 What needs (recreational, resource, or other) should be addressed in the Program Plan Update that are currently overlooked or underserved? – Think broader than one trail or issue.

Responses:

- Staffing is clearly inadequately addressed
- How to be effective in communicating with the legislature so that funding and resource needs can be justified or understood by the legislature
- Public access –resources overextended/ overexploited from other islands/ places. Managed access to trails to protect resources that communities rely on or enjoy
- Balance between conservation and recreation access [managed access] balance between recreation and protection
- Limited number of available trails for recreational users, especially compared to other islands
- Ways to evaluate areas impacted by invasives as 'non sensitive' areas to open up for more recreational use
- Focus on educating the public about the historic, cultural context of the trails by using trail stewards, educational workshops, need more money to encourage mind shift changes and value changes of the people who visit the 'āina
 - Outreach activities would be best deployed in schools and public libraries
- Collaborate with the County to enforce what is already in the books

Question 2 What do you anticipate will be a future need or issue with trails and access that the Program should be prepared to address?

Responses:

- Increased visitor volumes / trail use will continue to be an issue
- Despite opposition, permits and other forms of volume management has to be used otherwise trails will continue to be 'loved to death'
- When more trails become available, they should be "developed" and opened to the public. Spread the number of people wanting to hike among more publicized trails
- Need more facilities – composting toilets, having the ability for people to get out and explore more by providing these needed amenities (foot cleaning stations, eco-friendly solutions)
- Needs more educational signage on site
- Why don't we have more priority trails implemented from the original 1991 plan? Focus on fully implementing the plan.

Question 3 What are the potential untapped funding sources for the Program? Are you comfortable paying user or permit fees?

Responses:

- Donations – trail or bench named after organizations that make larger donations. More involvement and investment in the trails “adopt a trail” or some other program focused on donations
- Reparations – focus on billionaires who live here and make them invest in the ‘āina
 - Does not want to see permitting system for trails as a Native Hawaiian. As a lineal descendant who has rights to the place

Question 4 What is the Program currently doing well? What should be replicated across the islands or invested in as the Program moves into the future?

Responses:

(Participants ran out of time to answer this question)

Breakout Group 3: Kaua‘i

Question 1 What needs (recreational, resource, or other) should be addressed in the Program Plan Update that are currently overlooked or underserved? – Think broader than one trail or issue.

Responses:

- Private land thing: not sure the capabilities on Nā Ala Hele side, people try to cut access to trails on private lands
 - Will need the AG office to engage and impress that it is a priority for many folks
- Not enough parking
- People leave toilet paper on the side
- Kaua‘i Nā Ala Hele, signage got printed and put out
- Jeremiah-Clayton made signs and put them up
- More bathrooms would be great but big ask
- Seen some result of toilet paper issues reduced
- But some areas are seeing an influx

Question 2 What do you anticipate will be a future need or issue with trails and access that the Program should be prepared to address?

Responses:

- Trails will get busier, more folks on the trails now, parking as well as waste management
- Anticipate more people accessing the facilities

Question 3 What are the potential untapped funding sources for the Program? Are you comfortable paying user or permit fees?

Responses:

- Commercial use fee for 10 years
- Would be comfortable paying
- Pay what you can or volunteer
- Similar self-pay option without a person staffing to save on cost
- Directed to Nā Ala Hele, for trail maintenance
- Adding information to the website so people are aware of the lack of funding, accept donations, not only on trailhead
- Waiting on QR code for scanning and the wait until there is reception to pay a suggested \$5 donation
- As a resident: comfortable to pay fee directly to Nā Ala Hele for Kauaʻi trails. Essentially already paying taxes, which means already paying the fee through State taxes
- Donations made by residents of a particular island should be used on that island. No sharing fees across Counties or funneling money to Oʻahu.
- 3 years waiting for QR code going to try
- Reiterated the point that if someone donates to Kauaʻi, stays on Kauaʻi.

Question 4 What is the Program currently doing well? What should be replicated across the islands or invested in as the Program moves into the future?

Responses:

- Program is outstanding with limited staff that they have
- They walk the trails, and they are doing everything they can
- Each island is separate on the website
- Trail info on the website and the distances for each
- Grant for Nā Ala Hele, Kauaʻi specific
- Grant for Lihue was awesome

Breakout Group 4: Oʻahu

Question 1 What needs (recreational, resource, or other) should be addressed in the Program Plan Update that are currently overlooked or underserved? – Think broader than one trail or issue.

Responses:

- Kanaka maoli stewardship knowledge incorporation- two eyed seeing indigenous perspective; thinking about the traditional ecological zones “wao” that are kapu such as wao akua and utilizing protocols such as oli
- When the original plan was written commercial use was not included in the plan and has since become an issue and now has laws

- Water management and enforcement, reservation type systems
 - Elevate the importance of these places being in our watersheds and their relationships with the aquifers
 - Because of special resources and species, hiking etiquette is important
 - Those that have come to visit here are not aware of how to behave and treat the environment; enhance programs that help acclimate/educate them to the culture ; think about going through a course to obtain a hiking permit
- Bring more awareness to NAH trails with social media and getting people to use the NAH trails rather than illegal ones
- Off Highway Vehicle user groups are overlooked.

Question 2 What do you anticipate will be a future need or issue with trails and access that the Program should be prepared to address?

Responses:

- Overuse of using the forest or surroundings as a bathroom; people creating their own trails which creates a management problem; increase in volume of people
- Need parking area Kuli'ou'ou and Mānana trail
- Beneficial to focus on programs for residents as well; expand local education programs to school and other places where we can educate our keiki
- Can partner with existing organizations and cross department, less siloing, collaboration with community

Question 3 What are the potential untapped funding sources for the Program? Are you comfortable paying user or permit fees?

Responses:

- OHV can be a resource for funding through parks that people can pay to use and get people off the street; added that if there was a trail designated for OHV we could get more funding
- Permit system: as a resident, participant would be comfortable paying a fee—utilize a tiered system (e.g. kanaka vs transplant vs tourist)

Question 4 What is the Program currently doing well? What should be replicated across the islands or invested in as the Program moves into the future?

Responses:

(Participants ran out of time to answer this question)

Nā Ala Hele Virtual Public Open House
Meeting Notes
May 21, 2025

Appendix A: Email Announcements
Appendix B: Flyer and Social Media Graphics
Appendix C: Registration List (Redacted)
Appendix D: Zoom Poll Summary Results
Appendix E: Zoom Meeting Chat Record
Appendix F: Comment Submissions
Appendix G: Presentation

Appendix A: Email Announcements



Outlook

FW: Nā Ala Hele Virtual Open House Meeting May 21, 2025

From sysadmin <sysadmin@pbrhawaii.com>

Date Tue 5/6/2025 5:56 PM

To sysadmin <sysadmin@pbrhawaii.com>

 2 attachments (2 MB)

Flyer (digital).pdf; Flyer (digital).jpg;

Aloha mai kākou!

For the first time since 1991, the Nā Ala Hele Trails Program Plan is being updated!

Please join the Division of Forestry and Wildlife, Nā Ala Hele Program staff and their consultants for **a virtual Open House Meeting on Wednesday, May 21 from 5:00-6:30 PM**. During this meeting, you will learn about the Nā Ala Hele Program and participate in small group discussions on a range of trail management and strategic management issues-- essentially guiding the updated Program Plan into the future through community-based input.

For years, it has been Nā Ala Hele's goal to create and maintain a trail access network and management system that provides a broad range of recreational, cultural, religious, and subsistence opportunities for all of Hawai'i's people that aims to conserve Hawai'i's environmental and cultural heritage. In an effort to uphold these principal values of the Nā Ala Hele program, the Hawai'i Department of Forestry and Wildlife is updating the existing Trail and Access Program Plan that addresses the issues and conditions of present time.

To join our virtual open house, please RSVP using this link: (<https://us06web.zoom.us/meeting/register/jNbNT8RORomMaU5oKEQobQ>). We look forward to meeting with you and working together to improve upon the Nā Ala Hele Program that will benefit our beloved Hawai'i.

Aloha nō,

Nā Ala Hele Trails Program Plan Update Team

Hawai'i State Division of Forestry and Wildlife

PBR HAWAII

Appendix B: Flier and Social Media Graphics



Nā Ala Hele Program Plan Virtual Public Open House

**WEDNESDAY MAY 21ST
5:00 P.M. – 6:30 P.M**

**Scan the QR code to register
or visit the URL link:**

<https://us06web.zoom.us/join/jNNT8RORomMaU5oKEQobQ>



For the first time since 1991, the Nā Ala Hele Trails Program Plan is being updated!

Please join the Division of Forestry and Wildlife, Nā Ala Hele Program staff and their consultants for a virtual Open House Meeting. During this meeting, you will learn about the Nā Ala Hele Program and participate in small group discussions on a range of trail management and strategic management issues-- essentially guiding the updated Program Plan into the future through community-based input.

To join our virtual open house, please RSVP using this link: <https://us06web.zoom.us/join/jNNT8RORomMaU5oKEQobQ>. We look forward to meeting with you and working together to improve upon the Nā Ala Hele Program that will benefit our beloved Hawai'i.



Scan the QR Code or visit the link below to view the existing Nā Ala Hele Trails Program Plan:

<https://dlnr.hawaii.gov/recreation/files/2013/09/NAH-Program-Plan-1991.pdf>

If you need an auxiliary aid/service or other accommodation due to a disability, contact Jackson Bauer at 808-657-8041 and email address jackson.m.bauer@hawaii.gov as soon as possible. Requests made as early as possible have a greater likelihood of being fulfilled. Upon request, this notice is available in alternate/accessible formats.





REMINDER!

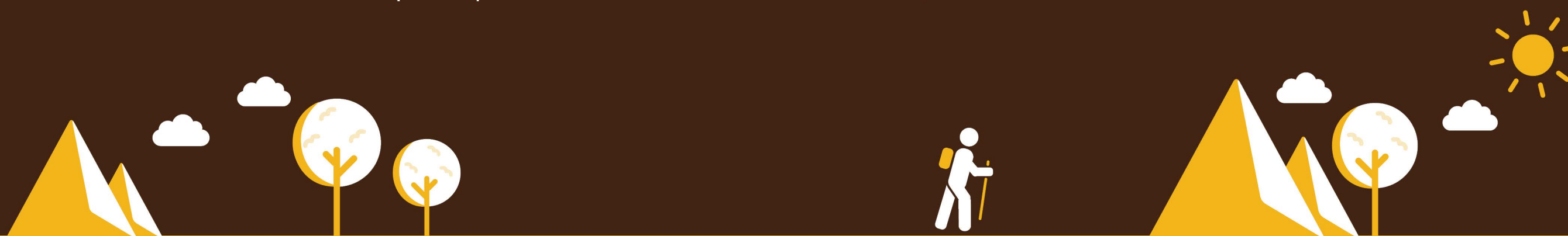
Nā Ala Hele Program Plan Virtual Public Open House

**WEDNESDAY MAY 21ST
5:00 P.M. – 6:30 P.M**

Use the link below to register!

**[https://us06web.zoom.us/meeting/register/
jNbNT8RORomMaU5oKEQobQ](https://us06web.zoom.us/meeting/register/jNbNT8RORomMaU5oKEQobQ)**

If you need an auxiliary aid/service or other accommodation due to a disability, contact Jackson Bauer at 808-657-8041 and email address jackson.m.bauer@hawaii.gov as soon as possible. Requests made as early as possible have a greater likelihood of being fulfilled. Upon request, this notice is available in alternate/accessible formats.



Appendix C: Registration List (Redacted)

Registration Report

Report generated time

5/22/2025 8:44

Topic	ID	Duration (minutes)	# Registrants
Nā Ala Hele Virtual Public Open House	827 9735 1436	90	176

Attendee Details

First Name	Last Name	Registration Time	Approval Status
Josh	Atwood	4/28/2025 11:16	approved
Tom	Cannon	4/29/2025 9:55	approved
Susan	Guille	4/30/2025 18:35	approved
DAVID	BROWN	5/2/2025 9:34	approved
Ken	Suzuki	5/2/2025 21:44	approved
John	Meier	5/6/2025 6:55	approved
Kat	Martyn	5/6/2025 17:24	approved
Patti	Ornellas	5/6/2025 17:59	approved
Marigold	Zoll	5/7/2025 6:55	approved
Bill	Stormont	5/7/2025 8:24	approved
Kui	Adolpho	5/7/2025 9:35	approved
Emi	Horii	5/7/2025 9:38	approved
Kristen Nalani	Kane	5/7/2025 12:41	approved
Steven	Bergfeld	5/7/2025 15:19	approved
Helene	Meehl	5/7/2025 15:55	approved
Kiana	Otsuka	5/7/2025 17:10	approved
Kim	Musser	5/8/2025 9:23	approved
Diane	Ware	5/8/2025 10:21	approved
Heather	Kimball	5/8/2025 10:39	approved
Aric	Arakaki	5/8/2025 15:21	approved
Sunny	LaPlante	5/8/2025 20:38	approved
Meagan	De Gaia	5/9/2025 11:36	approved
Yumi	Kam	5/9/2025 14:26	approved
Rebecca	Villegas	5/9/2025 15:11	approved
M	McReynolds	5/10/2025 9:32	approved
Meredith	Speicher	5/13/2025 7:52	approved
Rebecca	Crall	5/13/2025 8:22	approved
Erin	Stamos	5/13/2025 8:36	approved
Alyssa	Miller	5/13/2025 8:45	approved
Kauai	Lopes	5/13/2025 8:51	approved
Walter	Grenell	5/13/2025 9:00	approved
Katie	Roth	5/13/2025 9:07	approved
Alyssandra	Rousseve	5/13/2025 9:08	approved
Avinash	Surendran	5/13/2025 9:20	approved
Terry	Galpin	5/13/2025 9:49	approved
Joshua	Bowman	5/13/2025 10:03	approved
Dan	Sabo	5/13/2025 10:10	approved
katie	getchell	5/13/2025 10:16	approved

Lisa	Crampton	5/13/2025 10:18 approved
Purdyka	Wahilani	5/13/2025 10:31 approved
David	Smith	5/13/2025 10:43 approved
Eleanore	Kowardy	5/13/2025 11:04 approved
Pamela	Wai'olena	5/13/2025 11:28 approved
John	Vamvakitis	5/13/2025 12:05 approved
Chris	Seymour	5/13/2025 12:21 approved
Carey	Yost	5/13/2025 12:48 approved
Curtis	Motoyama	5/13/2025 13:55 approved
David	Eickhoff	5/13/2025 16:24 approved
Larry	Hunter	5/14/2025 4:06 approved
Nicole	Chung	5/14/2025 5:20 approved
BRUCE	KOEBELE	5/14/2025 8:45 approved
Samuel	Bosio	5/14/2025 11:37 approved
Luria	Namba	5/14/2025 13:30 approved
Amy Elizabeth	Gordon	5/14/2025 13:45 approved
Bobbie	Foster	5/14/2025 17:21 approved
Alex	Loomis	5/14/2025 17:35 approved
Ander	Thompson	5/14/2025 17:38 approved
Klayton	Kubo	5/14/2025 21:41 approved
Tony	Boone	5/15/2025 3:23 approved
Peter	Andress	5/15/2025 4:35 approved
Hope	Kallai	5/15/2025 7:04 approved
Bettina	Navarro	5/15/2025 14:07 approved
Hawkins	Biggins	5/16/2025 12:47 approved
Arlene	Allen	5/16/2025 13:39 approved
Catherine	Orlans	5/16/2025 15:25 approved
Sue	Kanoho	5/16/2025 15:34 approved
David	Bickham	5/16/2025 15:44 approved
Nathan	Balcombe	5/16/2025 15:48 approved
Serene	Smalley	5/16/2025 15:57 approved
Evelyn	Wight	5/16/2025 15:58 approved
Ann	Colton	5/16/2025 16:05 approved
Yvonne Marie	Simmer	5/16/2025 16:21 approved
William	Brown	5/16/2025 16:23 approved
Lisa	Berthoud	5/16/2025 16:30 approved
Dana	Hada	5/16/2025 18:20 approved
Blake	McNaughton	5/16/2025 21:12 approved
Denby	Fawcett	5/16/2025 22:08 approved
Paul	Hirst	5/16/2025 22:25 approved
Kyle	Kagimoto	5/17/2025 8:29 approved
Andrew	Cooper	5/17/2025 8:40 approved
Rayne	Regush	5/17/2025 12:14 approved
Richard	Furst	5/17/2025 13:53 approved

Cory	H	5/17/2025 14:09	approved
Kekai	Robinson	5/17/2025 20:28	approved
Melanie	Koehl	5/18/2025 5:42	approved
SAM	NELSON	5/18/2025 9:32	approved
Jordan	Jokiel	5/18/2025 15:09	approved
Rob	C	5/18/2025 18:40	approved
Angel	Permito-Kaheaku	5/18/2025 19:50	approved
Topher	Fast	5/18/2025 20:55	approved
Rose	Marie	5/19/2025 0:57	approved
David	Elies	5/19/2025 7:08	approved
Dar	Nakamura	5/19/2025 8:13	approved
Amy	Ketner	5/19/2025 8:31	approved
Raymond	Severn	5/19/2025 8:42	approved
Kim	Aloi	5/19/2025 10:46	approved
Jojo	Tanimoto	5/19/2025 11:48	approved
Tara	O'Hanley	5/19/2025 13:44	approved
Jesse	Souki	5/19/2025 14:21	approved
Rubber	Chicken	5/19/2025 15:28	approved
Sean	Pager	5/19/2025 16:13	approved
Karen	Delfo	5/19/2025 16:32	approved
Martha	Yent	5/19/2025 18:56	approved
Raquel	Ford	5/19/2025 20:47	approved
Dan	Coates	5/19/2025 21:12	approved
Stephen "Braddah"	Gomes	5/20/2025 3:40	approved
Robert	Cheshire	5/20/2025 4:45	approved
Mark	Feilinger	5/20/2025 5:53	approved
Stephen	Sussman	5/20/2025 6:55	approved
Rob	Weltman	5/20/2025 6:59	approved
Stephanie	Scotto	5/20/2025 7:40	approved
Penny	Merryman	5/20/2025 7:44	approved
Penny	Merryman	5/20/2025 8:22	approved
Kea	Kala	5/20/2025 8:24	approved
Mose	Andre	5/20/2025 8:26	approved
Dwight	Matsuwaki	5/20/2025 8:42	approved
Ruivaldo	Viana	5/20/2025 8:49	approved
Graham	Smith	5/20/2025 9:38	approved
Margot	Gardner	5/20/2025 10:53	approved
Dana	Fulton	5/20/2025 12:11	approved
Kelly	Foglio	5/20/2025 12:22	approved
Nadine	Robertson	5/20/2025 12:47	approved
Philip	Brown	5/20/2025 13:05	approved
lisa	baldwin	5/20/2025 13:11	approved
Rebekah	Magers	5/20/2025 13:41	approved
Jackson	Bauer	5/20/2025 14:17	approved

Laurie	Baker	5/20/2025 14:17 approved
Makena	Bassett	5/20/2025 14:17 approved
Kirra	Lindman	5/20/2025 14:19 approved
Annette	Wenzler	5/20/2025 15:15 approved
Thomas	Yoza	5/20/2025 15:21 approved
Ashley	Lowe Mackezie	5/20/2025 15:25 approved
Rachel	Castro	5/20/2025 15:25 approved
Melissa	Meier	5/20/2025 15:46 approved
Josh	Silverman	5/20/2025 17:24 approved
Ana	Tejeda-Pelkey	5/20/2025 18:25 approved
Lana	Frutoz	5/20/2025 21:23 approved
Keala	Fung	5/20/2025 21:51 approved
Luke	Caldwell	5/20/2025 21:57 approved
Ilan	Artzi	5/20/2025 23:49 approved
Heiliyana	Corpuz	5/21/2025 4:18 approved
Greg	Heyes	5/21/2025 5:57 approved
Stephen	Sico	5/21/2025 7:41 approved
Ryan	Roth	5/21/2025 10:36 approved
Kahealani	wright	5/21/2025 10:43 approved
Lisa Ellen	Smith	5/21/2025 10:58 approved
Dandre	Richards	5/21/2025 11:39 approved
Angela	Arthur	5/21/2025 11:56 approved
FRANK O.	HAY	5/21/2025 12:06 approved
Arnold	Yago	5/21/2025 12:07 approved
Whitney	Harvey	5/21/2025 13:26 approved
Candace	Gonzlaes	5/21/2025 14:59 approved
FWK-SMITD2024-I		5/21/2025 15:13 approved
yuri	shichishima	5/21/2025 15:45 approved
justin	varaljay	5/21/2025 15:53 approved
Janet	Schmidt	5/21/2025 15:55 approved
Deborah	Chang	5/21/2025 16:16 approved
Jaclyn	Doppelmayer	5/21/2025 16:37 approved
Catie	Cullison	5/21/2025 16:42 approved
Martin	Malley	5/21/2025 16:47 approved
Glendon	VanSandt	5/21/2025 16:49 approved
John	Miller	5/21/2025 16:51 approved
Aaron	Lowe	5/21/2025 16:53 approved
Matt	Goda	5/21/2025 16:54 approved
Derek	Risch	5/21/2025 16:56 approved
Hege	Hanssen	5/21/2025 17:00 approved
Ray	Watson	5/21/2025 17:00 approved
David	Asakura	5/21/2025 17:01 approved
AAron "Moose"	Reichert	5/21/2025 17:04 approved
Kristen	Harmon	5/21/2025 17:06 approved

Aziz	Agis	5/21/2025 17:11 approved
Jeremiah	Felsen	5/21/2025 17:34 approved
JASMINE	CRUSAT	5/21/2025 18:05 approved
John	Carse	5/21/2025 18:06 approved
Ryan	Chang	5/21/2025 18:52 approved
June	Miyasato	5/22/2025 7:58 approved

# Cancelled registrants	# Approved registrants	# Denied registrants
0	176	0

Appendix D: Zoom Poll Summary Results

NAH Poll #1 - How well vision

PBR HAWAII created at Apr 10, 2025 12:10 PM · 2 questions

Responses

43

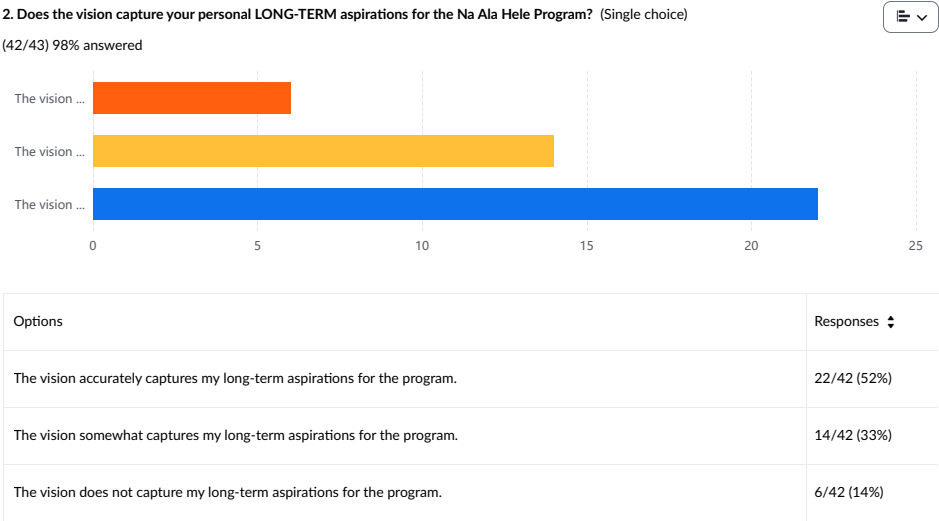
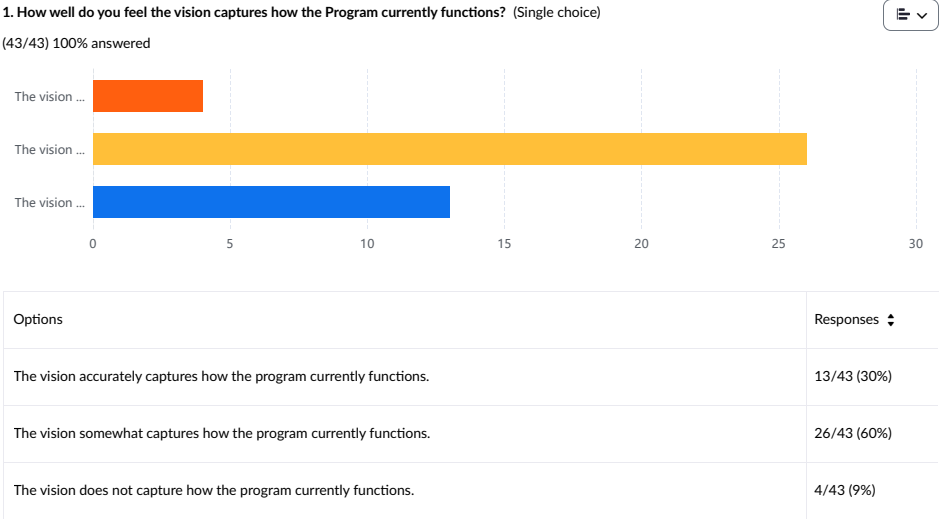
Typical time spent

1.4 minutes

Completion rate ⓘ

97.7%

Question summary



NAH Poll #2 - Priority Goals

PBR HAWAII created at Apr 10, 2025 12:16 PM · 1 question

Responses

48

Typical time spent

1.8 minutes

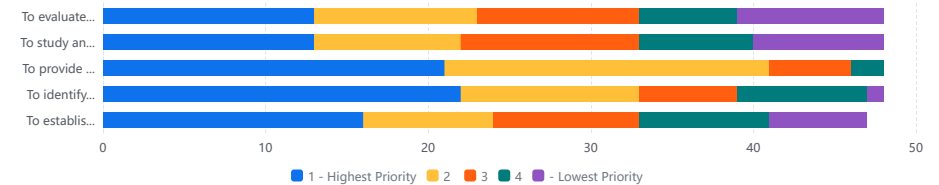
Completion rate ⓘ

100%

Question summary

1. Rank the current Na Ala Hele Plan goals based on your priorities for the Program. (Rank order)

(48/48) 100% answered



Options	1 - Highest Priority	2	3	4	- Lowest Priority	Total ↕
To establish an organization...	16 (34%)	8 (17%)	9 (19%)	8 (17%)	6 (13%)	47
To identify and select trails ...	22 (46%)	11 (23%)	6 (13%)	8 (17%)	1 (2%)	48
To provide adequate manag...	21 (44%)	20 (42%)	5 (10%)	2 (4%)	0 (0%)	48
To study and utilize a variet...	13 (27%)	9 (19%)	11 (23%)	7 (15%)	8 (17%)	48
To evaluate all aspects of th...	13 (27%)	10 (21%)	10 (21%)	6 (13%)	9 (19%)	48

NAH Poll #3 - Successful program plan

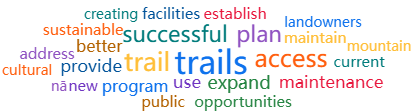
PBR HAWAII created at Mar 6, 2025 01:56 PM · 1 question

Responses	Typical time spent	Completion rate ⓘ
33	1.6 minutes	100%

Question summary

1. What does a successful program plan look like to you? (Long answer)

(33/33) 100% answered



A word cloud visualization of responses to the question. The most prominent words are 'successful', 'plan', 'trails', 'access', 'provide', 'new', 'program', 'use', 'expand', 'maintenance', 'public', 'opportunities', 'current', 'cultural', 'address', 'better', 'sustainable', 'creating', 'facilities', 'establish', 'landowners', 'maintain', and 'mountain'.

marigold.s.zoll@hawaii.gov

provide a framework for guiding responsible and sustainable management of Hawaiis trails

HueloBakers@gmail.com

will provide a balance between all types of trail users to improve overall public health and management of the environment.

william.t.stormont@hawaii.gov

Functional. Actionable. Aspirational. Realistic.

dandreferichards@icloud.com

A successful program plan will address climate change and provide relief to trail visitors.

kenji36@juno.com

Maintain all current trails, protect access to current trails, establish new trails

alyssandra.v.rousseve@hawaii.gov

For me a successful plan will Prioritize stewarding trails that are safe to both the individual and the trail, and bioculturally restoring the region with

Appendix E: Zoom Meeting Chat Record

00:18:36 Larry Hunter: Larry Hunter, Big Island. Professor of computational biology, conservation volunteer...

00:18:43 SAM NELSON: Sam Nelson big island hiker

00:18:46 Serene, KMWP: Serene, Oahu. I am with the Koolau Mountains Watershed Partnership, GIS/Data Tech and Ops.

00:18:47 Annette Wenzler: Annette horse back riding group Maui

00:18:55 Ray Watson: Ray Watson
President Maui Mountain Bike Coalition
mauimountainbike.org

00:18:57 Deborah Chang: Aloha from Pa‘auilo mauka, Deborah Chang

00:18:57 Melissa Meier: Melissa Meier, Maui, hiker

00:19:06 Jackson Bauer: Jackson Bauer, Hawai‘i Island Program Manager, Nā Ala Hele Trail and Access Program. S. Hilo, Pōnahawai

00:19:15 Amy Elizabeth Gordon: Amy Elizabeth & ‘Ōhana Gordon. Hawai‘i Island. Public access hiking & Planting more native trees.

00:19:16 Rob Weltman: Rob Weltman, Maui, frequent hike leader, including on a few of the Nā Ala Hele trails

00:19:20 Dandre Richards: Dandre, O‘ahu, hiker

00:19:23 John Meier: John Meier, Maui. Hiker, public access advocate

00:19:23 Laurie Baker: Laurie Baker on Maui, horse trails & ocean access

00:19:30 Jaclyn Doppelmayer: Aloha – Jacki Doppelmayer, Oahu – trail runner, volunteer steward, and part of the Hawaii Ultra Running Team

00:19:30 Hege Hanssen: Hege Hanssen board member Maui mountain bike coalition

00:19:33 Kauai Lopes: Aloha, Kau‘i Lopes from Hilo, I used to tbe the GIS Tech with NAH in Hilo, Cultural Practitioner and Avid user of public accesses

00:19:37 Bobbie Foster: Bobbie Foster - Oahu, Olli Hiking teacher, HTMC member

00:19:42 David Bickham: David Bickham Kauai hiker

00:19:45 Bill Stormont: Aloha mai kakou. Bill Stormont. Long-time Forestry and Wildlife staffer, former NAH Program Manager, avid hiker. Mahalo.

00:19:52 Alyssandra Rousseve: Aloha mai kākou! ‘O Lyss ko‘u inoa. Hi everyone! My name is Lyss. I'm a hydrologist/planner at the Commission on Water Resource Management and avid hiker/trail runner. Interested in learned more about the Nā Ala Hele Program

00:19:53 Janet Schmidt: Janet Schmidt North Kohala, hiking, camping and horse trail riding.

00:19:54 Sunny LaPlante: Sunny LaPlante Big Island hiker and environmentalist.

00:20:05 Graham Smith: Graham Smith. Maui. Hiker.

00:20:08 Martin Malley: Martin Malley, Maui, Maui Mountain Bike Coalition.

00:20:10 Aaron Lowe: Aaron Lowe - Oahu Trails and Access Specialist. It ALL Starts with a Trail.....

00:20:13 Hawkins Biggins: Hawkins Biggins, Oahu, hiker & HTMC trail maintenance

00:20:24 Marigold Zoll DLNR/DOFAW: Marigold Zoll, Oahu Forestry and Wildlife Branch Manager, Waialua, Oahu

00:20:38 Curtis Motoyama: Curtis Motoyama, Oahu, DLNR ADA Coordinator

00:20:47 Rebekah Magers: Rebekah Magers, Kauai hiker and Natural Resource Management Specialist with NEPM program at Kauai DOFAW

00:20:56 Derek Risch: Derek Risch, Research Coordinator, UH Mānoa
00:21:09 John Miller: John Miller avid hiker and trail clearer with HTMC .
Interested in trailhead improvements. Visitor fees
00:21:15 FWK-SMITD2024-I: Kawika Smith DOFAW Kaua'i
00:21:21 Tom Cannon: Tom Cannon, on Maui Island NAH Council, Aloha kahou.
00:21:36 Klayton Kubo: Klayton Kubo
Waimea, Kaua'i
00:21:49 justin varaljay: Justin Varaljay. Maui is Home. I run a trail
building business here. We have been focused on multipurpose and bike specific
trails and systems here and beyond. Also the vice president of the Maui Mountain
bike Coalition
00:22:32 Rob C: Rob C from Paauilo mauka concerned with integration of trail
systems with emergency exits in wildfire country.
00:22:41 justin varaljay: Replying to "Justin Varaljay. Mau..."

Aloha!

00:22:55 Amy Elizabeth Gordon: email informed me of tonight's meeting.
00:23:12 Larry Hunter: Heard about tonight's meeting from a Na Ala Hele
volunteers at the trailhead of Pu'u Wa'awa'a
00:23:56 Arnold Yago: Informed via FB post
00:25:47 Candace Gonzlaes: Aloha..Candace Gonzales- archaeologist and
cultural practioner in Puna on Hawaii island.
Always advocating for responsible access and sustainable alternates to vehicular
travel. Heard from a friend about tonight.
00:25:59 SAM NELSON: Headline to see would be it protects and provides
to many wonderful places in Hawaii
00:26:14 Jackson Bauer: Reacted to "Aloha..Candace Gonza..." with ❤️
00:27:22 Kauai Lopes: Reacted to "Aloha..Candace Gonza..." with ❤️
00:27:37 Kirra Lindman | PBR HAWAII: Reacted to "Aloha..Candace Gonza..."
with ❤️
00:29:23 Amy Elizabeth Gordon: Headlines for 2045: ****"The 20 year
anniversary of mauka to makai trail connecting Kawaihae & Kamuela and into Waimea
Ulu La'au Park invites all." ****"Ranch lands and private owners celebrate public
access and abundant natives and diversity." ****"Alalā thriving on Hawai'i Island and
Maui thanks to Na Ala Hele."
00:29:46 Jackson Bauer: Reacted to "Headlines for 2045: ..." with ❤️
00:30:16 Makena Bassett: Reacted to "Headlines for 2045: ..." with ❤️
00:30:20 Makena Bassett: Reacted to "Headline to see woul..." with ❤️
00:30:33 Candace Gonzlaes: headline: na ala hele facilitates connection
to aina and something along the lines of traditions and mo'olelo along the ala have
become part of everyday life in contemporary Hawai'i
00:30:57 Laurie Baker: Dream Headline: "Hawaii's DLNR Na Ala Hele program
wins nationwide award as best stewards of balancing enviornmental preservation with
public access."
00:31:06 Jaclyn Doppelmayr: Headline: Managed Public Trails Double
Across the State in Last Decade, Are Well Funded
00:31:08 Marigold Zoll DLNR/DOFAW: Reacted to "Headline: Managed P..."
with ❤️
00:31:08 Makena Bassett: Reacted to "headline: na ala hel..." with ❤️
00:31:08 Hege Hanssen: Reacted to "Dream Headline: "Haw..." with ❤️

00:31:09 Kauai Lopes: Nā Ala Hele: Huaka'i Hele: NAH to host mo'olelo on the trails they manage with culturally accurate information and traditional protocols workshop

00:31:19 Candace Gonzlaes: Reacted to "Nā Ala Hele: Huaka'i..." with ❤️

00:31:20 Jackson Bauer: Reacted to "Headline: Managed P..." with ❤️

00:31:30 Marigold Zoll DLNR/DOFAW: Reacted to "Dream Headline: "Haw..." with ❤️

00:31:31 Jackson Bauer: Reacted to "Nā Ala Hele: Huaka'i..." with ❤️

00:31:33 Kauai Lopes: Reacted to "headline: na ala hel..." with ❤️

00:31:36 Serene, KMWP: Headline: Ease of Access Established for all Public State Lands

00:31:38 Catie Cullison-PBR HAWAII: Reacted to "Nā Ala Hele: Huaka'i..." with ❤️

00:31:47 Larry Hunter: Reacted to "Dream Headline: "Haw..." with ❤️

00:31:53 Catie Cullison-PBR HAWAII: Reacted to "Headline: Managed P..." with ❤️

00:31:55 Alyssandra Rousseve: Newspaper: Green Fee Raised Sufficent Funds to Reforests All Trails with Native Plants Improving Aquifer Recharge, Biodiversity, and Biocultural Relationships

00:31:59 Kirra Lindman | PBR HAWAII: Reacted to "headline: na ala hel..." with ❤️

00:32:07 Bill Stormont: STATE HIRING MORE TRAIL STEWARDS

00:32:13 Kauai Lopes: Reacted to "STATE HIRING MORE TR..." with ❤️

00:32:14 Candace Gonzlaes: Reacted to "STATE HIRING MORE TR..." with 🙌

00:32:31 Catie Cullison-PBR HAWAII: Reacted to "STATE HIRING MORE TR..." with ❤️

00:32:39 Jackson Bauer: Reacted to "STATE HIRING MORE TR..." with 🇺🇸

00:33:08 Marigold Zoll DLNR/DOFAW: Reacted to "STATE HIRING MORE TR..." with ❤️

00:33:19 Makena Bassett: Reacted to "Newspaper: Green Fee..." with ❤️

00:33:27 Makena Bassett: Reacted to "STATE HIRING MORE TR..." with ❤️

00:33:31 Makena Bassett: Reacted to "Headline: Ease of Ac..." with ❤️

00:33:37 Makena Bassett: Reacted to "Nā Ala Hele: Huaka'i..." with ❤️

00:33:41 Makena Bassett: Reacted to "Headline: Managed P..." with ❤️

00:33:50 Makena Bassett: Reacted to "Dream Headline: "Haw..." with ❤️

00:35:17 Aziz Agis: I don't think Hawai'i should be spelled like that in the statment

00:35:26 Dandre Richards: Headline: Nā Ala Hele Trail Wins Cultural Landmark Dinstinction

00:35:38 Kauai Lopes: Reacted to "Headline: Nā Ala Hea..." with ❤️

00:35:48 Kauai Lopes: Reacted to "I don't think Hawai'..." with ❤️

00:36:08 Bill Stormont: 🇺🇸

00:36:13 Kauai Lopes: Reacted to "Newspaper: Green Fee..." with ❤️

00:36:27 Sunny LaPlante: why do you need to make an organization? I thought you are the organization.

00:36:46 Ray Watson: Reacted to "why do you need to ..." with ❤️

00:36:51 Catie Cullison-PBR HAWAII: Replying to "Headline: Nā Ala Hel..."

we will get that corrected going forward. thank you for pointing it out.

00:38:40 Bobbie Foster: Reacted to "202505211723190000.jpg" with 🍷

00:39:14 Deborah Chang: In 20 years, NAH has established itself as the foremost expert on management and protection of historic Hawaiian trails and the management of public access mauka and makai in cooperation with communities and other government agencies.

00:40:00 Jackson Bauer: Reacted to "In 20 years, NAH has..." with ❤️

00:40:21 Makena Bassett: Reacted to "In 20 years, NAH has..." with ❤️

00:40:36 Catie Cullison-PBR HAWAII: Reacted to "In 20 years, NAH has..." with ❤️

00:40:39 Bobbie Foster: Reacted to "In 20 years, NAH has..." with ❤️

00:43:09 Ray Watson: It should be easier to get permits for stewardship and community events. The DLNR already has online infrastructure for commercial beach activity and camping.

00:44:36 Makena Bassett: Reacted to "It should be easier ..." with 🍷

00:45:13 Sunny LaPlante: If 500-600 people a day are going into Pololu charge for the privilege and get more trails open that are similar.

00:46:39 Makena Bassett: Reacted to "If 500-600 people a..." with 🍷

00:46:41 Dandre Richards: Replying to "Headline: Nā Ala Hele..."

Ok, can I ask which one?

00:46:43 Jackson Bauer: Aloha Sunny, we're working on it! See our planning page for Pololū:
<https://dlnr.hawaii.gov/recreation/nah/hawaii/pololu-planning-project/>

00:47:04 Andrew Cooper: Reacted to "If 500-600 people a..." with 🍷

00:47:34 Ray Watson: Part of the States transient accommodation tax should directly go to trails for maintenance and Hawai'i Tourism Authority should have a campaign about stewardship approved by Na Ala Hele

00:47:56 Deborah Chang: Burning trail issues: loving places to death; needing to look into public access permit systems for sensitive environments; communities that have legitimate concerns re: the over-harvesting and over-crowding; and the lack of ability to control social media's encouragement of accessing places that are not actually open due to private ownership and safety issues.

00:48:53 Laurie Baker: Perhaps an annual pass at a reasonable cost for Hawai'i residents and a higher priced individual day pass for visitors could help fund some things.

00:49:06 Rob C: Reacted to "Perhaps an annual pa..." with 🍷

00:49:18 Alyssandra Rousseve: Newspaper: Nā Ala Hele Implements Protocols Honoring the Social-Ecological Zones of Native Hawaiian Stewardship (sooner than 20 years ☺)

00:49:48 Jojo Tanimoto: Hi I'm Jojo from Kawaihae. I don't feel comfortable answering right now since I'm new and would like to access this Plan. We live in Kamehameha country but Na Ala Hele needs to include our homelands. Will Kawaihae be added to this Plan? Before development???

I did get a map from Mr Bauer but confirms my concern that not much is known out here. Accessing the Plan would be much appreciated.

00:49:52 Andrew Cooper: A reasonably priced annual resident pass would be critical in any fee program.

00:50:42 Rebekah Magers: Replying to "A reasonably priced ..."

we already pay taxes though...isn't that our annual pass?

00:50:45 John Miller: Just got back from the Azores Portugal and they

charge a small amount/ permit to go on the hike. Not one visitor turned away due to cost. You need to go see the rest of the world and select the best ideas

00:51:20 Terry Galpin: assign me room 4

00:51:22 Laurie Baker: The annual resident pass could also allow access to more trails and the visitor pass could be just limited areas to limit trail damage in sensitive areas.

00:51:30 Lisa Ellen Smith: Please assign me to room 3

00:51:34 SAM NELSON: Room 2 please

00:51:35 Curtis Motoyama: please put me in room 4, thanks!

00:51:41 Rob Weltman: Group 1, please

00:51:45 Andrew Cooper: Room 2 please

00:51:47 Melissa Meier: room 1

00:51:48 Serene, KMWP: Room 4, Oahu

00:51:48 Alyssandra Rousseve: Room 4 please

00:51:49 Arnold Yago: Room 4

00:51:51 Hawkins Biggins: Room 4 please, thanks!

00:51:52 Yumi Kam: 4 please

00:51:55 Aaron Lowe: Room 4

00:51:59 Rebekah Magers: Room 3

00:52:04 FWK-SMITD2024-I: Room 3 please

00:52:05 John Meier: room 1

00:52:09 Marigold Zoll DLNR/DOFAW: room 4 please

00:52:16 Laurie Baker: room 1 Maui

00:52:23 David Bickham: 3

00:52:33 Ray Watson: Room 1

00:52:36 Kyle Kagimoto: Kauai please

00:52:40 Lisa Ellen Smith: do we need to audio in for this request?

00:53:08 Sunny LaPlante: I don't see a break out screen or hand raise I am group 2 Big Island

00:53:15 Lisa Ellen Smith: Reacted to "I don't see a break ..." with



00:53:18 Martin Malley: Room 1 please

00:55:24 Terry Galpin: room 4 pls

00:55:25 Janet Schmidt: Room 2 please

00:55:54 Jeremiah Felsen: Room 3 for me too. I'll do it myself if possible

01:16:25 Larry Hunter: Mark Bennioff has been generous to many Big Island needs – has he been approached about trails / Na Ala Hele?

01:16:48 Amy Elizabeth Gordon: Replying to "Mark Bennioff has be..."

good question. IDK

01:16:49 Jackson Bauer: Sorry you got cut off Kau'i. But I got ya. 😊

01:17:09 Kauai Lopes: Replying to "Sorry you got cut of..."

all good, we will have future talks lol

01:17:18 Kauai Lopes: Reacted to "Mark Bennioff has be..." with



01:17:18 Jackson Bauer: Reacted to "all good, we will ha..." with



01:18:00 Lisa Ellen Smith: Reacted to "Sorry you got cut of..." with



01:18:08 John Meier: Please add a note that three Maui hikers were not

able to figure out how to join the breakout session and dropped off this meeting.

01:18:56 Sunny LaPlante: Waimanu access, so where can we leave a vehicle down in Waipio?

01:19:00 Laurie Baker: As far as fees, a nominal fee for access, if there is a way to enforce it will be a way to preserve the trails. The trails on the North Shore (not Na Ala Hele) have been destroyed by car thieves dumping cars & homeless camps. We all love free anytime access, but need to have some control.

01:19:25 Bobbie Foster: Replying to "Please add a note th..."

agree - better instructions on how to join the groups and how to raise your hand to speak within the break out groups.

01:19:49 Larry Hunter: Replying to "Waimanu access, so w..."

Local residents can drive a 4WD vehicle into Waipio now, permits to Waipahu are available to residents.

01:20:00 Jackson Bauer: Replying to "Waimanu access, so w..."

All of Waipio is private property, so you'd have to arrange with one of the owners, or get dropped off. The Waipio Road restrictions are a County restriction.

01:20:06 Melissa Meier: Reacted to "As far as fees, a ..." with 🍷

01:20:06 Larry Hunter: Replying to "Waimanu access, so w..."

Waimanu*

01:20:21 Sunny LaPlante: Replying to "Waimanu access, so w..."

Yes but one can't park overnight in the valley right/

01:20:28 Andrew Cooper: Personally I am fine with an annual resident pass, as long as we see better facilities, more trails, or better conservation. If the money provides some visible improvements will keep buying the pass.

No permits please, nothing that takes advanced planning.

01:21:30 Laurie Baker: The current program for hunting looks like a great template to follow. Since it includes a mandatory safety course, license fee & organized hunts. Something similar could be done for all trails. As long as you sign up for a scheduled day, you can be given the combo lock code for access. This seems to work to keep out crime & dumping & destruction.

01:21:31 Deborah Chang: I'm OK with paying fees for a permit (and I'm part-Hawaiian) especially if it helps ensure that fewer people are packed into the place I want to hike, fish, or camp in.

01:21:33 Tom Cannon: The State needs to do a better job of keeping a

01:21:56 Tom Cannon: invasive species out of h

01:22:06 John Miller: Add locations (dropdown)to the current website for permits

01:22:09 Tom Cannon: Hawaii in the first place

01:22:27 Jackson Bauer: Replying to "Waimanu access, so w..."

Right. Never really could (legally).

01:22:37 Jackson Bauer: Reacted to "Hawaii in the first ..." with 🍷

01:23:02 Lisa Ellen Smith: TCP is traditional cultural practices

01:23:08 Catie Cullison-PBR HAWAII: Replying to "Please add a note

th..."

I'm sorry that you had trouble with the zoom format. We can follow up with folks directly, we definitely don't want to leave anyone feeling frustrated. Feel free to pass along my email address ccullison@pbrhawaii.com.

01:23:30 Larry Hunter: Replying to "Waimanu access, so w..."

I agree that there should be a way to access waimanu that doesn't require violating county or state law

01:23:33 Bobbie Foster: Reacted to "Personally I am fine..." with 🍷

01:23:34 Lisa Ellen Smith: Reacted to "agree - better instr..." with 🍷

01:23:49 Larry Hunter: Replying to "Waimanu access, so w..."

Waimanu* (autocorrect doesn't like it)

01:24:08 Laurie Baker: Easier access to volunteer opportunities would be helpful. I would be happy to work on horse trails but have never been made aware of the opportunity.

01:24:22 Larry Hunter: Reacted to "Easier access to vol..." with ❤️

01:24:30 Kauai Lopes: Permits and fees should only be for visitors not of this place

01:25:00 Rebekah Magers: We talked about permits and fees for residents if those funds stayed on island to maintain the island's trails.

01:25:08 Lisa Ellen Smith: Reacted to "We talked about perm..." with 🍷

01:25:11 Amy Elizabeth Gordon: Reacted to "Easier access to vol..." with 🍷

01:25:17 Andrew Cooper: Consider other uses in the use cases... An example would be a dark sky site, where people could go for stargazing or using a telescope.

01:25:19 Lisa Ellen Smith: I think they went back to Maui

01:25:20 Amy Elizabeth Gordon: Reacted to "I agree that there s..." with 🍷

01:25:30 Kirra Lindman | PBR HAWAII: Reacted to "We talked about perm..." with 🍷

01:25:31 Amy Elizabeth Gordon: Reacted to "Permits and fees sho..." with 🍷

01:25:39 Sunny LaPlante: Reacted to "Consider other uses ..." with 🍷

01:25:45 Andrew Cooper: Reacted to "We talked about perm..." with 🍷

01:26:05 Makena Bassett: Replying to "I think they went ba..."

we are currently discussing the island of Hawai'i :)

01:26:16 Lisa Ellen Smith: Replying to "I think they went ba..."

Thank you

01:26:16 Kauai Lopes: Replying to "We talked about perm..."

maybe we can give the option to volunteer or pay a fee...volunteering helps build positive relationships

01:26:23 Amy Elizabeth Gordon: effluence of affluenza

01:26:32 Margot Gardner: Using the work line from our community jails to keep

the trails clear would be a good use of these inmates time and give them a chance to give back to the community. Many years ago when I worked/lived on Oahu, the inmates would keep the Waimanalo trails cleared.

01:26:33 Rob C: Permitting systems have proven problematic (even suspiciously prejudicial) in my circle (residents!) at times.

01:26:47 Rebekah Magers: Reacted to "maybe we can give th..." with 🍷

01:27:11 Larry Hunter: Reacted to "maybe we can give th..." with 🍷

01:28:21 Sunny LaPlante: Future headline, the trail from Hawi to Volcanoes National Park is open for dayhikes and complete hike through experience with camping available.

01:28:30 John Miller: Collaboration is essential to efficiency of financial resources

01:28:31 Jackson Bauer: Replying to "Future headline, the..."

Yes!

01:28:39 Kauai Lopes: Reacted to "Future headline, the..." with 🍷

01:28:50 Jackson Bauer: Reacted to "Collaboration is ess..." with 🍷

01:28:50 Amy Elizabeth Gordon: Reacted to "Future headline, the..." with 🍷

🍷

01:28:59 Amy Elizabeth Gordon: Replying to "Future headline, the..."

love this Sunny

01:29:00 Lisa Ellen Smith: Include TEK Traditional ecological knowledge and complete Ka Pa'akai analysis for all trails

01:29:04 Bobbie Foster: Replying to "Personally I am fine..."

like the annual resident pass idea... that would include hike etiquette, importance of native plant restoration to preserve our watershed, etc.

01:29:30 Jackson Bauer: Reacted to "Include TEK Traditio..." with 🍷

01:29:56 Dandre Richards: Reacted to "Consider other uses ..." with 🍷

01:30:04 Amy Elizabeth Gordon: OHV?

01:30:25 Jackson Bauer: Replying to "OHV?"

"Off Highway Vehicle"

01:30:31 Lisa Ellen Smith: potential monitoring of trail usage via QRC and donations - but only for the island or the specific trail update the website to ask for donations

01:30:33 Jackson Bauer: Replying to "OHV?"

Like ATVs, Dirt bikes, etc.

01:30:52 Deborah Chang: Permit systems can be creative and tailored to each unique location's needs. However, the same rules need to apply to everyone with provisions for native Hawaiian TCRs which are protected and guaranteed in Hawai'i's constitution and laws.

01:31:11 Jackson Bauer: Reacted to "Permit systems can b..." with 🍷

01:31:12 Sunny LaPlante: Reacted to "Permit systems can b..." with 🍷

01:31:23 Bobbie Foster: Not sure how we can address vehicle safety/crime. Kalawahine Trail head/Oahu is becoming more and more of a problem.

01:31:30 Makena Bassett: Reacted to "Permit systems can b..." with 🍷

01:31:30 SAM NELSON: I think Na hele has done a good job on trail

maintenance

01:31:34 Amy Elizabeth Gordon: Reacted to "Permit systems can b..." with



01:31:51 Jackson Bauer: Reacted to "I think Na hele has ..." with



01:32:25 Jaclyn Doppelmayer: Question #4: Na Ala Hele has instituted great outreach to volunteer organizations and individuals to support trail maintenance and native plant education. We would love to see that expand and improve. Thanks NAH

01:32:26 Alyssandra Rousseve: Loved that you folks put this workshop together. I heard about this from my supervisor at CWRM. How could these workshops target the communities in which these trails are located? (Maybe you are!)

01:32:37 Jackson Bauer: Reacted to "Question #4: Na Ala..." with



01:32:38 John Meier: When looking at the program plan, I think it is important to highlight the Kaulana Manu trail on Hawaii Island as a true gem that really represents what Na Ala Hele was trying to create back in 1991. It's just an amazing trail with easy access, great signage, a beautiful location and wonderful out plantings. Really a world-class example of how to make a great trail.

01:32:47 Kauai Lopes: Reacted to "When looking at the ..." with



01:32:49 Jackson Bauer: Reacted to "Loved that you folks..." with



01:32:52 Melissa Meier: Reacted to "When looking at th..." with



01:32:54 Laurie Baker: To raise your hand in a Zoom meeting, click on the "Reactions" button in the meeting controls and select "Raise Hand." A hand icon will appear next to your name, indicating to the host that you wish to speak.

01:32:54 Matt Goda: Reacted to "Question #4: Na A..." with



01:33:04 Jackson Bauer: Reacted to "When looking at the ..." with



01:33:18 Andrew Cooper: Replying to "Personally I am fine..."

...and creates a mailing list for volunteer events, donation calls, etc.

01:33:28 Sunny LaPlante: Big Island also had a strong wish for increasing the number of trails as earthquakes and lava flows have decreased our trails.

01:33:35 Jackson Bauer: Reacted to "Big Island also had ..." with



01:33:55 Jackson Bauer: Reacted to "...and creates a maili..." with



01:33:57 Curtis Motoyama: DCAB - State of Hawaii Disability and Communication Access Board

01:34:04 Andrew Cooper: Reacted to "When looking at the ..." with



01:34:05 Lisa Ellen Smith: Reacted to "DCAB - State of Hawa..." with



01:34:09 Makena Bassett: Reacted to "...and creates a maili..." with



01:34:14 Makena Bassett: Reacted to "like the annual resi..." with



01:34:15 Makena Bassett: Reacted to "Personally I am fine..." with



01:34:15 Larry Hunter: Reacted to "like the annual resi..." with



01:34:17 Jackson Bauer: Reacted to "like the annual resi..." with



01:34:34 Larry Hunter: Reacted to "Personally I am fine..." with



01:34:35 Rob C: Reacted to "Big Island also had ..." with



01:34:39 Makena Bassett: Reacted to "When looking at the ..." with



01:34:51 Makena Bassett: Reacted to "Loved that you folks..." with



01:34:56 Alyssandra Rousseve: Water users, we are all taking away from the cup, but how do we "fill the cup." How can we encourage and improve people's relationship/reciprocity with the spaces that are our sources of water

01:35:14 Lisa Ellen Smith: Replying to "Water users, we are ..."

reforestation projects, invasive removal

01:35:17 Makena Bassett: Reacted to "Water users, we are ..." with ❤️
01:35:17 Terry Galpin: mahalo for taking the time to have this open house
01:35:22 Kauai Lopes: Reacted to "reforestation projec..." with 🙌
01:35:25 Marigold Zoll DLNR/DOFAW: Reacted to "Water users, we are ..." with ❤️
01:35:25 Larry Hunter: Reacted to "reforestation projec..." with 🙌
01:35:26 Makena Bassett: Reacted to "mahalo for taking th..." with ❤️
01:35:27 Kauai Lopes: Reacted to "Water users, we are ..." with 🙌
01:35:32 Amy Elizabeth Gordon: Reacted to "mahalo for taking th..." with 🙌
01:35:35 Laurie Baker: The Zoom meeting format was an excellent way to include everyone, no matter where they happen to be today!
01:35:42 Rayne Regush: The 1990's Program Plan is an awesome document. Please be sure to include the information in Chapter IV regarding "The Inventory"
01:35:46 Bobbie Foster: Reacted to "reforestation projec..." with 🙌
01:36:03 Amy Elizabeth Gordon: Mahalo nui loa
01:36:07 Makena Bassett:
<https://dlnr.hawaii.gov/recreation/nah/na-ala-hele-program-plan/>
01:36:13 Jaclyn Doppelmayer: Mahalo
01:36:14 Bill Stormont: Mahalo nui Theresa and Catie and the PBR team, and the NAH staff, and to the UHM crew. Psyched to see this moving forward in such a positive and robust way.
01:36:26 Theresa Dean: Reacted to "Mahalo nui Theresa a..." with ❤️
01:36:32 Kauai Lopes: Reacted to "Mahalo nui Theresa a..." with ❤️
01:36:41 Lisa Ellen Smith: Replying to "Water users, we are ..."

fencing newly reforested areas to keep out ungulates remove fences once growth is large enough

01:36:42 John Miller: All over the country people pay to enter parks and recreation at a keosk and put the tick on your dashboard
01:36:49 Aaron Lowe: Reacted to "Using the work line ..." with 🙌
01:36:49 Makena Bassett: Mahalo piha for your invaluable feedback and wonderful discussion!
01:36:53 Laurie Baker: Reacted to "All over the count..." with 🙌
01:36:53 Dandre Richards: Mahalo
01:36:55 Larry Hunter: Grateful that you as state employees are interested in our opinions
01:36:59 Makena Bassett: Reacted to "Mahalo nui Theresa a..." with ❤️
01:36:59 Alyssandra Rousseve: Reacted to "https://dlnr.hawaii...." with ❤️
01:37:04 Lisa Ellen Smith: Reacted to "Grateful that you as..." with 🙌
01:37:05 Makena Bassett: Reacted to "All over the country..." with 🙌
01:37:14 Alyssandra Rousseve: Reacted to "Mahalo piha for your..." with ❤️
01:37:35 Kauai Lopes: Mahalo nui Jackson, PBR, DOFAW, and all the awesome unseen workers behind the success of this program. We'll keep in touch.
01:37:42 Makena Bassett: Reacted to "Mahalo nui Jackson, ..." with ❤️
01:37:43 justin varaljay: I just want to chime in on approaching

funding from a permit/fee basis. While I know there are trails/areas where, possibly, this type of setup up could be effective; generally I am very much against having to file for a permit or pass or pay a daily fee to access the areas and trails I love and use often. While I am not an expert, i imagine the economics of setting up such systems can be difficult to actually achieve goals. I really appreciate free open access and not having to deal with policing, booths, scrutiny that comes pay areas in the public domain. Mahalo!

01:37:47 Serene, KMWP: Will this recording and all items be posted on social media and other outlets to encourage further comment and participation?

01:37:54 Hawkins Biggins: Feature headline: Enough funding was provided and the government worked with local communities and private landowners to develop trailheads that feature safe parking, signage, restrooms, trash collection and cultural stewards. The trails are safer and maintained and each trail has volunteer days for locals and visitors to help clear invasive plants and plant natives. Trail access issues have been addressed and the trails are no longer overused and erosion issues have been resolved to help keep our trails safe for future generations. Mahalo!

01:38:01 Kauai Lopes: Reacted to "I just want to chime..." with ♥

01:38:33 Lisa Ellen Smith: She wasn't able to review the comments from Kauai

01:38:38 Makena Bassett: Reacted to "I just want to chime..." with 👍

01:38:46 Lisa Ellen Smith: Klayton had the most comments

01:39:27 Deborah Chang: Can we see the summary of all comments that were obtained through this Open House? Looks like some very helpful ideas/thoughts. Mahalo for this opportunity!

01:39:37 Margot Gardner: Trails should include equine access.

01:39:43 Lisa Ellen Smith: Reacted to "Trails should includ..." with 👍

01:40:26 Makena Bassett: Replying to "Will this recording ..."

this recording will not be shared, however, we will continue to share opportunities for further participation!

01:40:39 Sunny LaPlante: Aloha, Jackson!

01:41:16 Makena Bassett: Replying to "Can we see the summa..."

We will post these meeting notes (encapsulating all comments and discussion in each breakout room) on the NAH website :)

01:41:27 Lisa Ellen Smith: Reacted to "We will post these m..." with 👍

01:41:58 Makena Bassett: Reacted to "Can we see the summa..." with 👍

01:42:04 Jackson Bauer: Reacted to "Aloha, Jackson!" with ♥

01:42:08 Makena Bassett: Reacted to "Feature headline: En..." with 👍

01:42:12 Deborah Chang: Mahalo Makena! I will be on the lookout for the meeting notes.

01:42:17 Hawkins Biggins: Reacted to "We will post these m..." with 👍

01:42:20 Makena Bassett: Reacted to "Mahalo Makena! I wil..." with ♥

01:42:23 Aaron Lowe: Reacted to "Mahalo nui Theresa a..." with ♥

01:42:30 Serene, KMWP: Replying to "Will this recording ..."

Too bad it won't be available to others unable to join in real-time. Posting it on several platforms would really encourage more engagement and public comment.

01:43:04 Alyssandra Rousseve: Just hopped back on to add one piece of mana'o. Even under Kānaka Maoli stewardship of these places... an individual will always ask permission to enter a space. It is a humbling thing to do. No matter your status, you request permission (i.e. via Oli/Mele) to enter the forest, and you listen for an acknowledgement/response from others or the winds, rain, elemental akua, etc.

01:43:10 Bobbie Foster: Reacted to "We will post these m..." with 🍷

01:43:12 Alyssandra Rousseve: Aloha!

01:43:14 Kauī Lopes: Reacted to "Just hopped back on ..." with ❤️

01:43:17 Kirra Lindman | PBR HAWAII: Reacted to "Just hopped back on ..." with ❤️

01:43:17 Makena Bassett: Reacted to "Just hopped back on ..." with ❤️

01:43:24 Kauī Lopes: Replying to "Just hopped back on ..."

kāko'o piha

01:43:34 Margot Gardner: Reacted to "Just hopped back on ..." with ❤️

01:43:35 Laurie Baker: More horse trails are needed on Maui. 🍷🍷

01:43:36 Aaron Lowe: Reacted to "Grateful that you as..." with 🍷

01:43:36 Lisa Ellen Smith: some of that information is available on the USFWS

01:43:43 Lisa Ellen Smith: for Dandre

01:43:45 Aaron Lowe: Reacted to "Mahalo nui Jackson, ..." with ❤️

01:43:55 Hawkins Biggins: Reacted to "Just hopped back on ..." with ❤️

01:44:39 Lisa Ellen Smith: he can review published Biological Opinions from USFWS that will provide baseline flora and fauna data

01:45:12 Dandre Richards: Reacted to "Just hopped back on ..." with ❤️

01:45:12 Kauī Lopes: Mahalo nui kākou, I gotta ha'alele. Much aloha to you all for making the time

01:45:20 Makena Bassett: Reacted to "Mahalo nui kākou, I ..." with ❤️

01:45:27 Makena Bassett: Reacted to "More horse trails ar..." with 🍷

01:45:38 Aaron Lowe: Reacted to "Feature headline: En..." with 🍷

01:45:41 Theresa Dean: Theresa Dean tdean@pbrhawaii.com

01:46:29 Dandre Richards: Replying to "some of that informa..."

Mahalo! Looking for as much data as I can find

01:46:37 Lisa Ellen Smith: incorporate each county's public access paths as well

01:46:46 Jackson Bauer:

<https://dlnr.hawaii.gov/recreation/nah/na-ala-hele-program-plan/>

01:46:47 Makena Bassett: Reacted to "incorporate each cou..." with 🍷

01:46:58 Hawkins Biggins: Mahalo!

01:47:09 Aaron Lowe: Mahalo everybody! Great feed back. It ALL Starts with a Trail!!

01:47:10 Bobbie Foster: Reacted to "incorporate each cou..." with 🍷

01:47:43 Makena Bassett: Reacted to "Mahalo everybody! G..." with ❤️

Appendix F: Comment Submissions

Theresa Dean

From: sysadmin <sysadmin@pbrhawaii.com>
Sent: Thursday, May 22, 2025 8:33 AM
To: Theresa Dean; Makena Bassett
Cc: Catie Cullison
Subject: FW: Provide the same or similar forms for independent community input online

From: Rob Weltman <robw@worldspot.com>
Sent: Wednesday, May 21, 2025 6:27 PM
To: sysadmin <sysadmin@pbrhawaii.com>
Subject: Provide the same or similar forms for independent community input online

Aloha mai,

I just attended the community input Zoom meeting. It was somewhat interesting, but as with most meetings with this format, the breakout room was dominated by a couple of people with very narrow but very intense interests, in this case mountain biking (which is only applicable to a very tiny fraction of our trails and our trail users). How about providing the same or similar forms for input online so we can think about them and provide them when we have time. The forms could be updated as feedback is provided to further refine the input.

Me ke aloha,
Rob

Theresa Dean

From: DLNR.FW.NaAlaHele.Hawaii <naalahahele.hawaii@hawaii.gov>
Sent: Tuesday, May 20, 2025 2:02 PM
To: Theresa Dean
Cc: Catie Cullison; Makena Bassett
Subject: FW: [EXTERNAL] Proposal for Nā Ala Hele Virtual Public Open House

Jackson M. Bauer

Hawai'i Island Na Ala Hele Trails and Access Specialist,

Division of Forestry and Wildlife,

Department of Land and Natural Resources

19 East Kawili Street

Hilo, Hawai'i 96720

808-657-8041

jackson.m.bauer@hawaii.gov

From: Bruce P Koebele <bpkoebele@gmail.com>
Sent: Tuesday, May 20, 2025 8:20 AM
To: DLNR.FW.NaAlaHele.Hawaii <naalahahele.hawaii@hawaii.gov>
Subject: [EXTERNAL] Proposal for Nā Ala Hele Virtual Public Open House

Dear Nā Ala Hele:

Below is a proposal for consideration.

Nā Ala Hele Proposal: Planting Hawaiian Plants Along Our Public Trails

This proposal is based on the similar successful idea of selling specific animal food to people visiting a petting zoo and is a more public-engaging extension of the Arbor Day Foundation's and Nature Conservancy's Plant a Tree programs. The motivation for the proposal is the belief that tourists and residents should see more Hawaiian plants on our trails rather than the alien invasive plants that currently dominate many.

Imagine this:

1. Each month (week?) a couple of DOFAW staff go up Mānoa Falls trail (or another trail with lots of traffic) with a power auger and dig 100 holes along the sides of the trail. Before going on to the next dig site, they mark the hole with a bright yellow flag and gather together the excavated soil into a neat pile next to the newly-made hole.
2. The following day, at the trailhead, a couple of DOFAW staff sell 100 (native and Polynesian Introduced) Hawaiian plants for \$10 per plant (keep it simple with CASH ONLY) to any hiking tourist or local willing to plant the plant along the trail. The buyer is also given a handout with directions on where (i.e., in any hole with a bright yellow flag next to it) and how to plant the Hawaiian plant.
3. The hiker selects a flagged hole along the trail and plants their plant. They also pull up the yellow flag and store it away in their bag/backpack along with the now-empty plant pot.
4. Meanwhile, when all the plants are sold but before leaving the trailhead, the two DOFAW staff leave behind a couple of recycling bins where returning hikers can deposit their empty plant pot and yellow flag (for later pickup and reuse by DOFAW).

Year end results: (1) 1,200 Hawaiian plants planted along the trail. (2) \$12,000 raised by DOFAW, (3) more and more hikers see (and, hopefully, learn about) Hawaiian plants each year.

--

Bruce P Koebele
(808) 695-5009
84-740 Kili Drive, Apt 430
Waianae, HI 96792

Theresa Dean

From: rayneregush@aol.com
Sent: Wednesday, May 21, 2025 8:25 PM
To: tdean@pbrhawaii.com
Cc: jackson.m.bauer@hawaii.gov
Subject: Fw: NAH Program Plan Update - DRAFT
Attachments: NAH Old Govt Rd Dev Scenario.pdf

Thanks for coordinating tonight's Zoom meeting.

As promised, attached is the NAH Historic Trail/Old Gov't Road Development Scenario 1-page document. I think it's worthy for inclusion in the Updated Plan.

Mahalo,
Rayne

----- Forwarded Message -----

From: Theresa Dean <tdean@pbrhawaii.com>
To: rayneregush@aol.com <rayneregush@aol.com>
Cc: Bauer, Jackson M <jackson.m.bauer@hawaii.gov>; dan.k.smith@hawaii.gov <dan.k.smith@hawaii.gov>; Catie Cullison <ccullison@pbrhawaii.com>; Makena Bassett <mbassett@pbrhawaii.com>
Sent: Monday, May 19, 2025 at 09:16:07 AM HST
Subject: Re: NAH Program Plan Update - DRAFT

Aloha Rayne,

Thank you for registering for the Na Ala Hele Program Plan Open House virtual meeting this Wednesday. We are looking forward to your participation and perspectives. The goals of the meeting are to: (1) provide general public information on the role of the Na Hala Hele Trail and Access program, (2) inform the public on the broad mandate of the program, and (3) focus on the public priorities for strategic direction of the program.

At this time, we do not have a full public draft ready for public review. This meeting will help inform how the Na Ala Hele Program prioritizes their funding and staffing resources, the types of activities the program will focus on, and the how to build better working relationships with the public and trail enthusiast/ users.

Once the plan has been drafted, it will be available for public review and comment. We will add you to the listserv to receive updates.

I hope this helps clarify the intent of the meeting and we're very happy to have you join us.

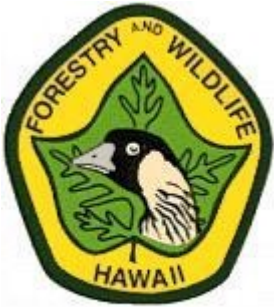
Mahalo nui loa,

Theresa Dean
Planner, Associate

NA ALA HELE TRAIL AND ACCESS PROGRAM
Historic Trail/Old Government Road Development Scenario

1. Conduct research, review development plans and other pertinent planning documents and continue adding data to the NAH trail and access inventory to identify and locate trails/OR's
2. Select the trails and trail segments that may be suitable for public use and development by the NAH program through discussions between NAH staff and the respective NAH Advisory Councils.
3. Ascertain that the State has clear title by insuring that the State has not relinquished title to the trail or trail segment (if the alignment was in existence before the Highways Act 1892) by conducting an abstract through the NAH Abstractor. Also, determine if there is public access to the alignment in question and where applicable, suitable parking is available.
4. Review and approval by the Board of Land and Natural Resources on designation of the trail or trail section as part of the NAH Program.
5. Confirm the historic trail alignment's physical location, as necessary with support from Historic Preservation.
6. Conduct a metes and bounds or centerline survey to exactly describe the physical location of the trail alignment in relation to adjacent private land (if applicable.)
7. As necessary, conduct research for a Environmental Assessment (EA), which would include a Historic Preservation Management Plan (HPMP) on historic and archeological features located along the trail corridor. The scope of the HPMP will be determined jointly by HP and NAH staff utilizing:
 - 1) Existing data from HP,
 - 2) The collection of information from other sources (such as data collected by adjacent private landowners that have initiated development plans) and
 - 3) Input from the local community.

The HPMP will be produced either by NAH staff in consultation with HP staff and/or through contracting a private consultant. Submit the EA and HPMP for review and approval.
8. Determine and then document if trail maintenance and stewardship will be conducted by either:
 - 1) Adjacent landowners (where the trail is bordered on either side by private land,)
 - 2) Interested community members / organizations, or
 - 3) Existing DOFAW and NAH staff. If either 1 or 2, NAH will draft a Memorandum of Agreement on trail stewardship for BLNR approval.
9. Implement the HPMP, trail development and stewardship. Development includes, but is not limited to: brushing the trail of encroaching vegetation, trail reconstruction, and installation of appropriate informational/directional signage and other mitigative measures for public safety. Trail improvements and signage are also intended to keep the public along the State owned trail corridor and off any adjacent private property, in addition to deterring the public from investigating or tampering with archaeological or historic sites located along the trail on the adjacent private property (where applicable.)
10. Trail corridor (or trail section) is made available for public use.



Est. 1903

State of Hawaii
Department of Land and Natural Resources
Division of Forestry and Wildlife
2135 Makiki Heights Drive
Honolulu, Hawaii 96822
(o) 808-973-9784 (f) 808-973-9781 (c) 808-292-5645

From: Theresa Dean <tdean@pbrhawaii.com>
Sent: Wednesday, May 28, 2025 7:42 AM
To: Peralta, Ryan K <ryan.k.peralta@hawaii.gov>
Cc: Zoll, Marigold S <marigold.s.zoll@hawaii.gov>; Catie Cullison <ccullison@pbrhawaii.com>; Makena Bassett <mbassett@pbrhawaii.com>; Bauer, Jackson M <jackson.m.bauer@hawaii.gov>
Subject: [EXTERNAL] Re: Nā Ala Hele Virtual Open House Meeting May 21, 2025

Aloha Ryan,

Following up on your request to submit comments on the Na Ala Hele Program Plan update, please see the May 21st presentation attached. We had participants answer a few polling questions and then have a deeper dive discussion in breakout rooms. You will see the prompts in the various slides throughout the deck. Feel free to answer those questions as well as submit any additional feedback you may have for the team. We are working on meeting notes and adding the video recording of the presentation on the website. We will send out an email blast to participants, those who registered, and folks on our listserv once those items become available.

Best,

Theresa Dean

From: Peralta, Ryan K <ryan.k.peralta@hawaii.gov>
Sent: Wednesday, May 7, 2025 12:49 PM
To: Theresa Dean <tdean@pbrhawaii.com>
Cc: Zoll, Marigold S <marigold.s.zoll@hawaii.gov>
Subject: RE: Nā Ala Hele Virtual Open House Meeting May 21, 2025

Cool. I assume you have a presentation that you will present to the public. In order for me to understand the context of your project, can you please forward it to me so I can be in alignment with what you are trying to achieve?

Theresa Dean

From: Peralta, Ryan K <ryan.k.peralta@hawaii.gov>
Sent: Friday, June 6, 2025 1:56 PM
To: Theresa Dean
Cc: Zoll, Marigold S; Catie Cullison; Makena Bassett; Bauer, Jackson M
Subject: RE: Nā Ala Hele Virtual Open House Meeting May 21, 2025

Hi Theresa,

I think that a lot of my comments deal more with the island of Oahu than for the whole State. As such, it would not be appropriate for your project. However, I have one comment:

I think that the NAH program should be the POC for all access-related issues for Forestry and Wildlife. This includes public access, management access, and facilitating other accesses on our lands (i.e. easements, other agencies, etc.).

Ryan Keala Ishima Peralta
Forest Management Supervisor I

PUPUKAHI I HOLOMUA!



State of Hawaii
Department of Land and Natural Resources
Division of Forestry and Wildlife
2135 Makiki Heights Drive
Honolulu, Hawaii 96822
(o) 808-973-9784 (f) 808-973-9781 (c) 808-292-5645

From: Theresa Dean <tdean@pbrhawaii.com>
Sent: Wednesday, May 28, 2025 8:35 AM
To: Peralta, Ryan K <ryan.k.peralta@hawaii.gov>
Cc: Zoll, Marigold S <marigold.s.zoll@hawaii.gov>; Catie Cullison <ccullison@pbrhawaii.com>; Makena Bassett <mbassett@pbrhawaii.com>; Bauer, Jackson M <jackson.m.bauer@hawaii.gov>
Subject: [EXTERNAL] Re: Nā Ala Hele Virtual Open House Meeting May 21, 2025

Yes, but you are not limited to these questions if you have other feedback. Thank you!

Theresa Dean

From: Peralta, Ryan K <ryan.k.peralta@hawaii.gov>

Sent: Wednesday, May 28, 2025 8:26 AM

To: Theresa Dean <tdean@pbrhawaii.com>

Cc: Zoll, Marigold S <marigold.s.zoll@hawaii.gov>; Catie Cullison <ccullison@pbrhawaii.com>; Makena Bassett <mbassett@pbrhawaii.com>; Bauer, Jackson M <jackson.m.bauer@hawaii.gov>

Subject: RE: Nā Ala Hele Virtual Open House Meeting May 21, 2025

Aloha Theresa,

Did you want me to answer the questions on slide 22?

THE STRATEGIC DIRECTION OF NĀ A

- (1) What needs (recreational, resource, or other) addressed in the Program Plan Update that are overlooked or underserved? – Think broader than the issue.
- (2) What do you anticipate will be a future need or access that the Program should be prepared for?
- (3) What are the potential untapped funding sources for the Program? Are you comfortable paying user or other fees?
- (4) What is the Program currently doing well? What can be replicated across the islands or invested in as we move into the future?

Ryan Keala Ishima Peralta
Forest Management Supervisor I

PUPUKAHI | HOLOMUA!

I can wait until after the meeting on the 21st.

Thanks,

Ryan Keala Ishima Peralta
Forest Management Supervisor I

PUPUKAHI I HOLOMUA!



State of Hawaii
Department of Land and Natural Resources
Division of Forestry and Wildlife
2135 Makiki Heights Drive
Honolulu, Hawaii 96822
(o) 808-973-9784 (f) 808-973-9781 (c) 808-292-5645

From: Theresa Dean <tdean@pbrhawaii.com>
Sent: Wednesday, May 7, 2025 11:47 AM
To: Peralta, Ryan K <ryan.k.peralta@hawaii.gov>
Cc: Zoll, Marigold S <marigold.s.zoll@hawaii.gov>
Subject: [EXTERNAL] Re: Nā Ala Hele Virtual Open House Meeting May 21, 2025

Aloha e Ryan,

Thank you for reaching out. You may send your comments directly to me via email.

Mahalo nui for your time and participation,

Theresa Dean

Planner, Associate



PBR HAWAII

Land Planning | Landscape Architecture

Environmental Planning | Land Use Entitlements

1001 Bishop Street Suite 650

Honolulu, HI 96813

Office: 808-521-5631 ext. 38

Fax: 808-523-1402

Email: tdean@pbrhawaii.com

www.pbrhawaii.com

 Please consider the environment before printing this e-mail

This email is intended only for the person or entity to which it is addressed and may contain confidential information. Any review, retransmission, dissemination or other use of, or taking of any action in reliance upon, this information by persons or entities other than the intended recipient is prohibited. If you receive this e-mail in error, please contact the sender by replying to this e-mail and delete this e-mail and any attachments from all computers without reading or saving the same in any matter whatsoever.

From: Peralta, Ryan K <ryan.k.peralta@hawaii.gov>
Sent: Wednesday, May 7, 2025 6:22 AM
To: sysadmin <sysadmin@pbrhawaii.com>
Cc: Zoll, Marigold S <marigold.s.zoll@hawaii.gov>
Subject: RE: Nā Ala Hele Virtual Open House Meeting May 21, 2025

Aloha,

I am unavailable to make the Open House but I would like to submit comments. How do I do that?

Thanks,

Ryan Keala Ishima Peralta

Forest Management Supervisor I

PUPUKAHI I HOLOMUA!



State of Hawaii

Department of Land and Natural Resources

Division of Forestry and Wildlife

2135 Makiki Heights Drive

Honolulu, Hawaii 96822

(o) 808-973-9784 (f) 808-973-9781 (c) 808-292-5645

From: sysadmin <sysadmin@pbrhawaii.com>

Sent: Tuesday, May 6, 2025 5:15 PM

To: sysadmin <sysadmin@pbrhawaii.com>

Subject: [EXTERNAL] Nā Ala Hele Virtual Open House Meeting May 21, 2025

Aloha mai kākou!

For the first time since 1991, the Nā Ala Hele Trails Program Plan is being updated!

Please join the Division of Forestry and Wildlife, Nā Ala Hele Program staff and their consultants for **a virtual Open House Meeting on Wednesday, May 21 from 5:00-6:30 PM**. During this meeting, you will learn about the Nā Ala Hele Program and participate in small group discussions on a range of trail management and strategic management issues-- essentially guiding the updated Program Plan into the future through community-based input.

For years, it has been Nā Ala Hele's goal to create and maintain a trail access network and management system that provides a broad range of recreational, cultural, religious, and subsistence opportunities for

all of Hawai'i's people that aims to conserve Hawai'i's environmental and cultural heritage. In an effort to uphold these principal values of the Nā Ala Hele program, the Hawai'i Department of Forestry and Wildlife is updating the existing Trail and Access Program Plan that addresses the issues and conditions of present time.

To join our virtual open house, please RSVP using this link:

(<https://us06web.zoom.us/meeting/register/jNbNT8RORomMaU5oKEQobQ>). We look forward to meeting with you and working together to improve upon the Nā Ala Hele Program that will benefit our beloved Hawai'i.

Aloha nō,

Nā Ala Hele Trails Program Plan Update Team

Hawai'i State Division of Forestry and Wildlife

PBR HAWAII

Appendix G: Presentation

Nā Ala Hele Program Plan Update

VIRTUAL PUBLIC OPEN HOUSE

Wednesday, May 21, 2025

5:00 p.m. – 6:30 p.m.



AGENDA

- About The Division of Forestry and Wildlife, Nā Ala Hele Trail and Access Program
- What is the Program Plan?
- Defining a Successful Program Plan
- Nā Ala Hele Vision and Goals
- Trail Planning Issues
- University of Hawai'i at Mānoa Recreational Trails Research Project
- The Strategic Direction of the Program
- Next Steps

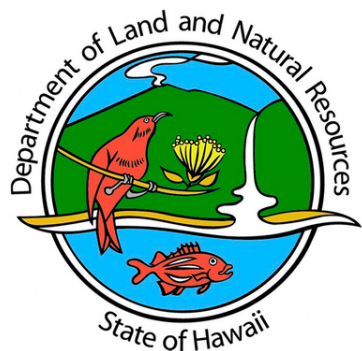


INTRODUCTION

Planning process is forward focused, public voices will guide the program into the future.

- **Name**
- **Question:**
 - In 20 years, you read a headline in the local newspaper about the Nā Ala Hele program. What would you like it to say?





About Forestry and Wildlife & Nā Ala Hele

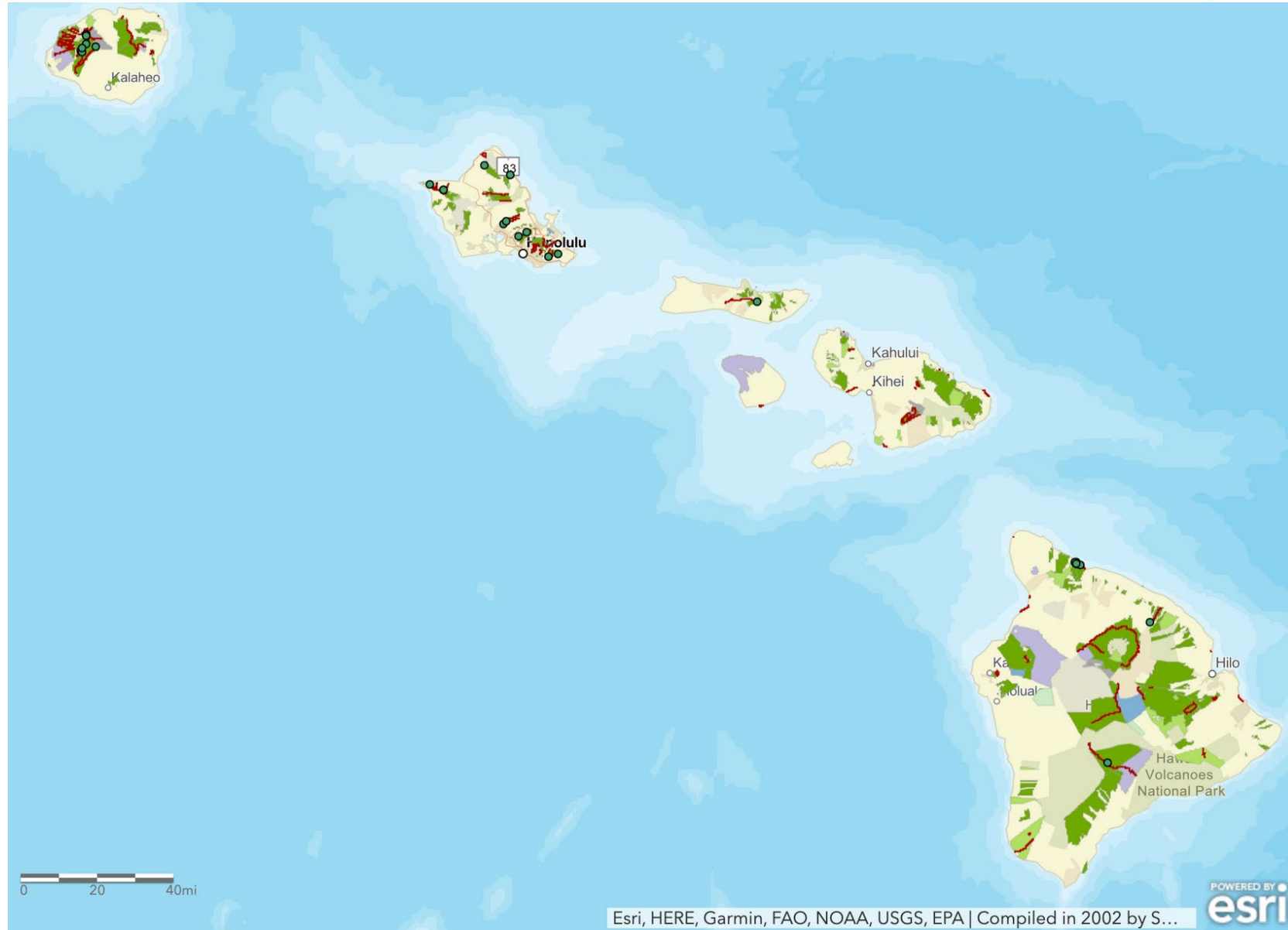


ABOUT THE DEPARTMENT OF LAND AND NATURAL RESOURCES

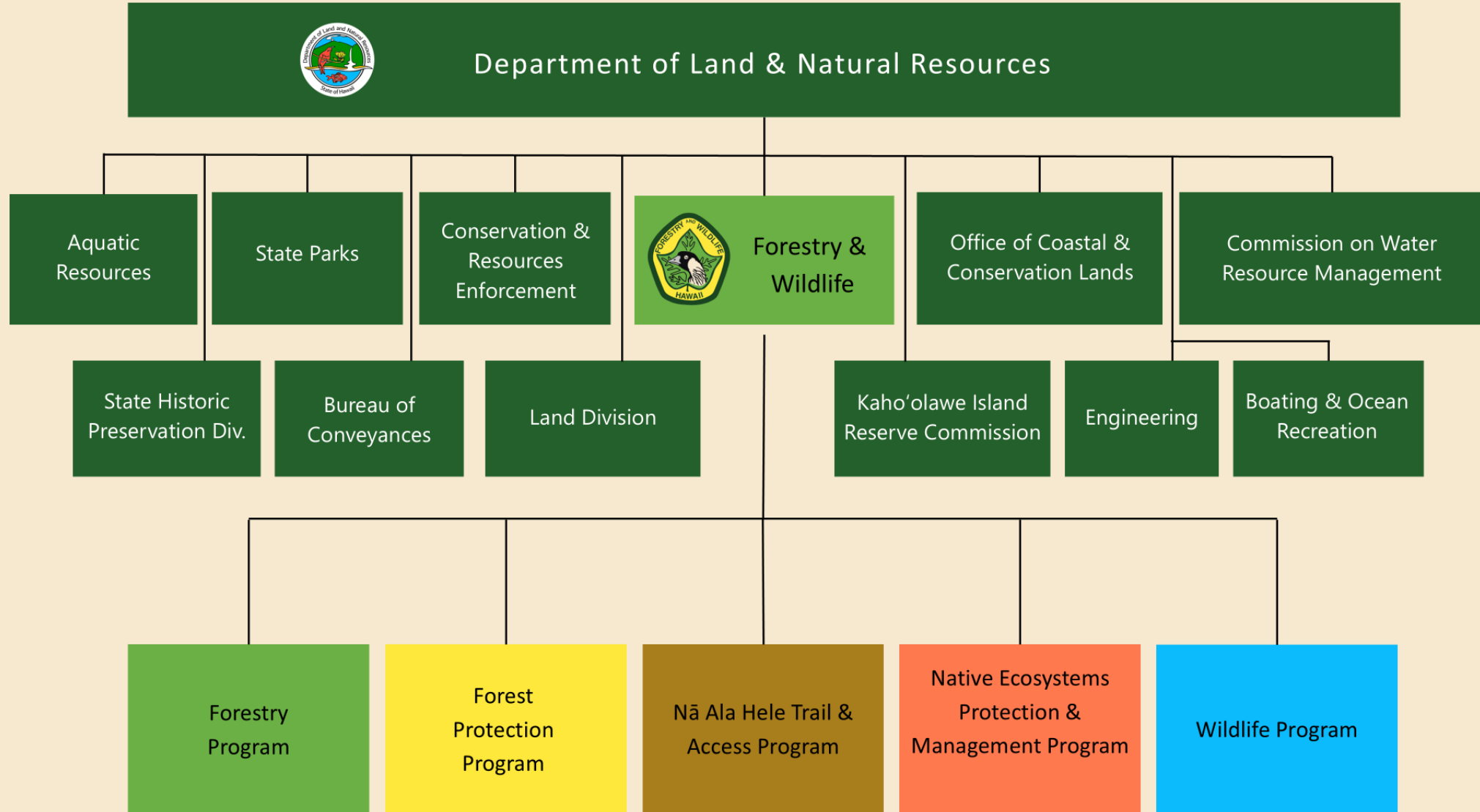
The Department of Land and Natural Resources (DLNR) is the largest land manager in Hawai'i.

They manage 1M acres of the 1.6M acres held by the State of Hawai'i.

The DLNR manages public lands for public benefit, on behalf of the people of Hawai'i.



ABOUT THE DIVISION OF FORESTRY AND WILDLIFE



ABOUT NĀ ALA HELE TRAIL & ACCESS PROGRAM

- The Nā Ala Hele Trail and Access Program manages trails, roads, off-highway vehicle and mountain bike parks, and other outdoor recreation features, as well as access corridors to those features, for public recreational use.
- The bulk of these features occur on lands managed by the Division of Forestry and Wildlife, including forest reserves, natural area reserves, and wildlife sanctuaries.
- Other features are on private land, but the access itself is publicly owned.



TRAILS AND ACCESSSES PROTECT LIFE AND PROPERTY

Managing trails and accesses is only part of the picture. The trails that are maintained by Forestry and Wildlife are used by more than recreationalists. In the agency, staff use trails to:

- Address threats to the health of our forests, including wildfire and invasive species, and the protection of native species, ecosystems, and watersheds.
- Fight fires in wild areas and in the wildland-urban interface (responding to fires across 60% of Hawai'i's land area).



TRAILS AND ACCESSES PRESERVE CULTURAL RESOURCES



Kinolau and 'amakua



Wahi pana &
historic sites



Lā'au lapa'au



Lei making



Carving &
canoe building



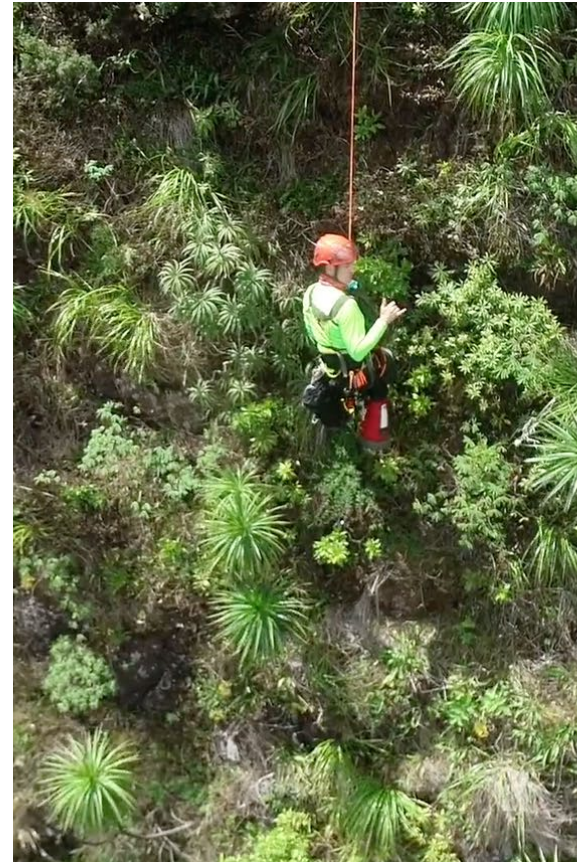
TRAILS AND ACCESSES PRESERVE NATURAL RESOURCES



Wildlife Sanctuary Management



Hoofed-Animal Fencing

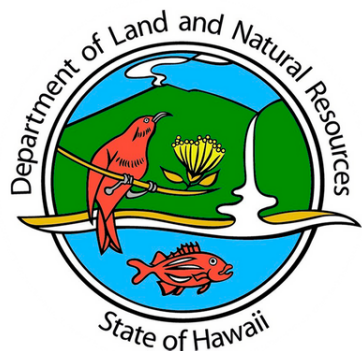


Extreme Botany



Forest Bird Conservation





About the Nā Ala Hele Program Plan





**Program
Evaluation**



**Implementation
Guidelines**



**Assessment of
Available Resources**



**Program Vision
and Goals**



**Strategy for
Addressing Goals**

WHAT IS THE NĀ ALA HELE PROGRAM PLAN?

The Plan WILL:

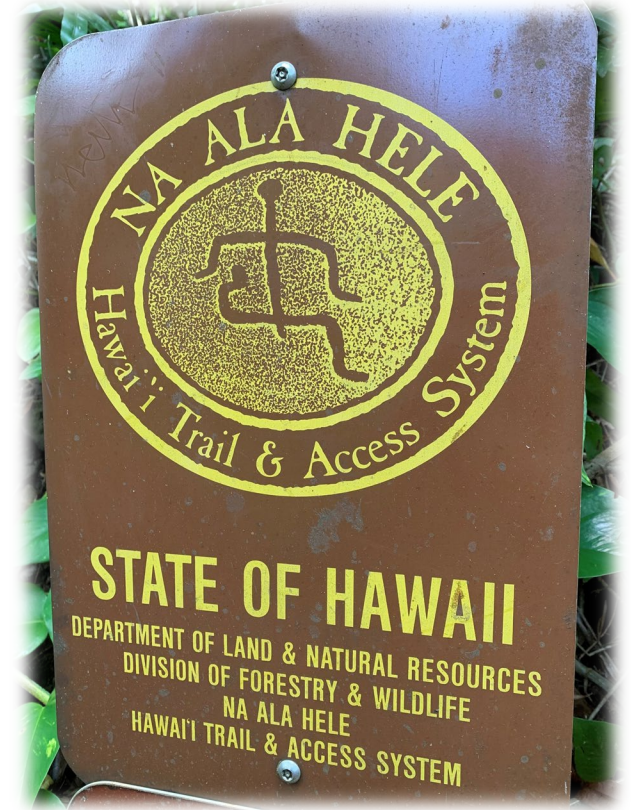
- Identify Program vision and goals
- Identify strategies for addressing goals
- Create implementation guidelines
- Assess available resources
- Create a mechanism for future program evaluation

The Plan WILL NOT:

- Pertain to specific issues, problems, or concerns on uses, areas or accesses
- Identify problems only on a specific trail or access
- Identify desired outcomes for a feature, trail, or access of particular concern
- Identify vague or ambiguous priorities or guidelines

A SUCCESSFUL NĀ ALA HELE PROGRAM PLAN

- Clear and specific
- Articulates priorities
- Incorporates indigenous and local knowledge and values
- Identifies funding/staff obstacles and recommends potential strategies
- Establishes practical and ongoing method for measuring progress
- Anticipates ongoing change (climate, social)



NĀ ALA HELE PROGRAM PLAN - VISION

The purpose of a vision statement is to establish a guiding philosophy that will influence all aspects of the program.

Current Vision Statement:

To develop, via the Nā Ala Hele program, a trail and access network and management system which:

- (1) provides a broad range of recreational, cultural, religious, and subsistence opportunities for all of Hawai'i's people, and*
- (2) helps to conserve Hawai'i's cultural heritage and environment.*



NĀ ALA HELE PROGRAM PLAN - GOALS

The purpose of the Goals Statements are to further define the vision and how the program will implement the vision.

5 Goals of the Na Ala Hele Program:

- To establish an organization that can work to achieve Nā Ala Hele's goals and objectives.*
- To identify and select trails and accesses for acquisition, development, and improvement.*
- To provide adequate management of all trails and accesses within Nā Ala Hele.*
- To study and utilize a variety of options and approaches to expanding the trail and access network.*
- To evaluate all aspects of the program in order to identify where improvements need to be made.*



A SUCCESSFUL NĀ ALA HELE PROGRAM PLAN

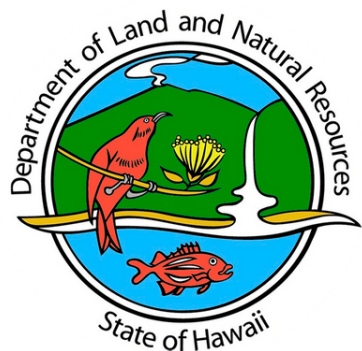
What does a successful program plan look like to you?

Example:

For me, a successful program plan will...

- *Expand sustainable trail practices*
- *Prioritize climate change mitigation and adaptation strategies for trails*
- *Emphasize volunteer work, stewardship opportunities, and internships for students*
- *Focus resources on reducing the spread of invasive species*





Trail Planning and the Program Plan



TRAIL PLANNING ISSUES

- Large number of people visiting popular hiking trails (Trail Capacity)
- Preservation of Historic Features, Cultural and Customary Practices
- Revenue Generation Using Fee-based Programs and Collections
- Rule Enforcement
- Invasive Species Management / Endemic Species Restoration
- Impacts of Climate Change
- Mobility, Connectivity, and Public Accessibility
- Waste Management



Recreational Trails Research Project



Where are trails
most vulnerable
to degradation?

Trail
Vulnerability
Assessment

How should we
pay for trail
management?

Trail Recreational
Economics Study

Trail Actions
Decision
Analysis

Which trail
management
actions should
we implement?

How much do
these actions
cost?

TRAIL STAKEHOLDERS – PROGRAM FOR ALL

The Program manages complex priorities and serves a multitude of stakeholders.

1.4M
Residents

~10M visitors,
annually

Native Hawaiian
Groups

Hunters

Recreational Forest
Users

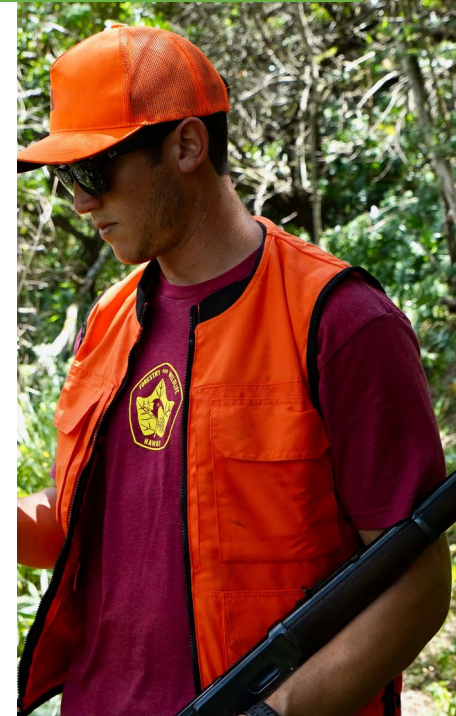
Policymakers

Funders

Landowners

Researchers

Students &
Educators



THE STRATEGIC DIRECTION OF NĀ ALA HELE

Breakout Groups by Island Council: Please choose the breakout group based on your current residence or the island that you visit the most frequently.

- A. Breakout Group 1: Maui Nui
- B. Breakout Group 2: Hawaii Island
- C. Breakout Group 3: Kauai
- D. Breakout Group 4: Oahu



THE STRATEGIC DIRECTION OF NĀ ALA HELE

- (1) What needs (recreational, resource, or other) should be addressed in the Program Plan Update that are currently overlooked or underserved? – Think broader than one trail or issue.**
- (2) What do you anticipate will be a future need or issue with trails and access that the Program should be prepared to address?**
- (3) What are the potential untapped funding sources for the Program? Are you comfortable paying user or permit fees?**
- (4) What is the Program currently doing well? What should be replicated across the islands or invested in as the Program moves into the future?**



Na Ala Hele Program Plan Update Schedule



Project Administration

Client Coordination
KICK-OFF MEETING



Background Research

Plan, HRS, and HAR Review



Inventory of Resources



ADA Accessibility and Mobility Analysis

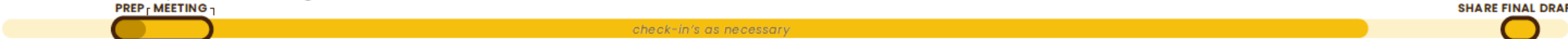


Agency Stakeholder & Community Outreach Engagement

Agency-wide, Visioning and Goal Setting



Na Ala Hele Advisory Council Meetings



Legislator Briefings



Key Stakeholder Engagement
STAKEHOLDER DATABASE



Na Ala Hele Program Plan Update

Exisiting Conditions Analysis



Financial + Organizational Staffing Analysis



DRAFT Plan Update



FINAL Plan Update



Mahalo!
Stay in Touch:
[https://dlnr.hawaii.gov/recreation/
nah/na-ala-hele-program-plan/](https://dlnr.hawaii.gov/recreation/nah/na-ala-hele-program-plan/)

CURRENT PLAN

The 1991 Nā Ala Hele Program Plan is the foundational document for how the Program operates, plans, and manages trails across the State of Hawai'i. View it here:

 [Current Nā Ala Hele Program Plan \(1991\)](#)

PROGRAM PLAN UPDATE

For the first time since 1991, the Nā Ala Hele Trails Program Plan is being updated! The Program Plan Update is being developed by Department of Land and Natural Resources staff, the Island Advisory Councils, stakeholders with key insights into trail management, and the general public. The resulting document will build upon the foundational 1991 Plan to reflect today's needs and best practices.

Read all about it:

 [Nā Ala Hele Plan Update Factsheet](#)

Send us your ideas!

 [Send comments](#)

