



KOAI'A CORRIDOR TRAIL SYSTEM PLAN

PROJECT STATUS

The Nā Ala Hele (NAH) Trails and Access Program is seeking public input to help guide the development of a Draft Environmental Assessment (DEA) regarding a potential trail system within the Koai'a Corridor. The Koai'a Corridor is a state-owned parcel of approximately 317 acres, located in South Kohala on Hawai'i Island.

Throughout this process we are open to concerns or insight anyone may have to offer. Our goal is to incorporate the community's voices in every step of this process.

PROCESS

Nov. 14- Dec 31, 2025

- Initial public consultation

Spring 2026

- Beginning of environmental review: Posting of Draft Environmental Assessment
- 30-day public commentary period

Summer 2026

- Posting of Final Environmental Assessment
- 30-day public commentary period

Fall 2026

- Begin of trail construction: two phases

OUTCOMES

Trail Network:

This project will result in an approximate 7 mile trail system throughout the Koai'a Corridor. The new trail system will connect to the neighboring Koai'a Tree Sanctuary trails to create a cohesive trail network.



Trail Design:

This will be Hawai'i Island's first trail to be designed entirely under sustainable trail building guidelines. Trail routes will be bike-optimized while serving a variety of user groups.



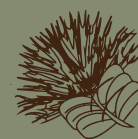
Community engagement:

Increased volunteer, education, and outreach opportunities.



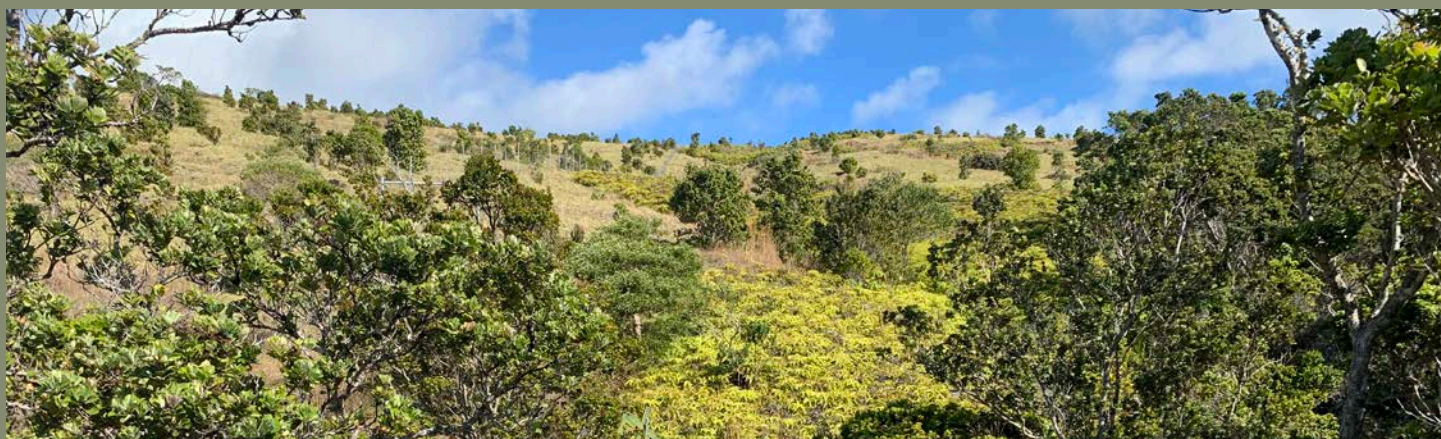
Conservation:

Conservation efforts will be enhanced due to the increased accessibility throughout the rugged terrain.



Culture, history, ecology:

This trail system will serve to highlight the intrinsic value of the corridor, while preserving the landscape and its stories for future generations.



For more information, please contact:

Alexis Campa

Nā Ala Hele Trails and Access, DLNR DOFAW

NaAlaHele.Hawaii@hawaii.gov

KOAI'A TREE SANCTUARY AND CORRIDOR 2025

