

Nā Ala Hele Trail & Access Program PUBLIC REVIEW DRAFT

VIRTUAL PUBLIC PRESENTATION

MAY 27, 2026

4:00 P.M.



AGENDA

- About The Division of Forestry and Wildlife, Nā Ala Hele Trail and Access Program
- Trail Planning Objectives
- Overview of the Nā Ala Hele Program Plan Draft
- Next Steps
- Question time



HOW TO PARTICIPATE

- **Polling Questions**

- Presenter will indicate when the poll has been launched and will guide meeting participants through answering each question.
- Results for each polling question will be announced in real time with additional opportunity to have a discussion at the end of the presentation, as time permits.

- **Zoom Chat**

- Please feel free to submit any comments, questions, or concerns in the Zoom chat function at the bottom left-hand side of your screen. Project Team Members will work to respond.
- If you have technical issues that prevent you from participating in the poll, don't worry! You can add your answer directly in the chat box.



ZOOM HOUSEKEEPING - POLLING

1 Choose your response

Zoom Polls

How to Use Zoom Polling

1. Do you know how to use Zoom Polling?

Yes

No

Unsure

Submit

Unmute Start Video Participants Polls Chat Share Screen Record Leave

2 Click submit

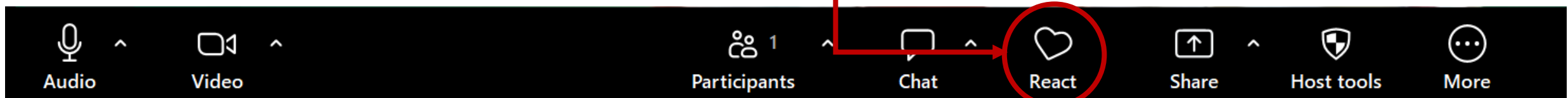
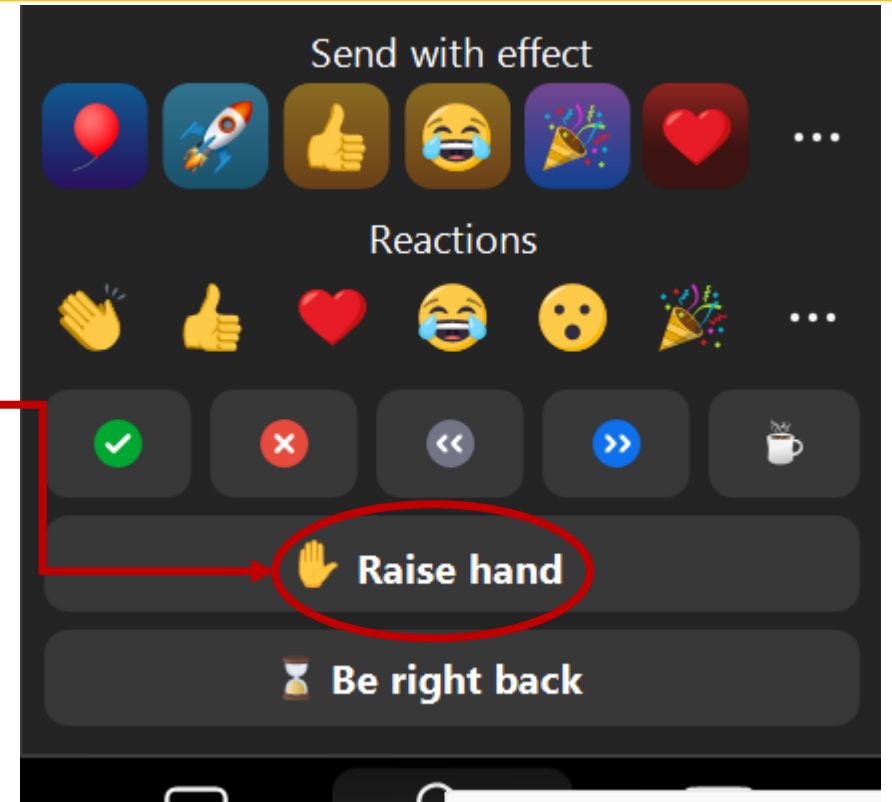
3 If you choose 'Other' or if you wish to clarify your answer, please submit your thoughts in the chat



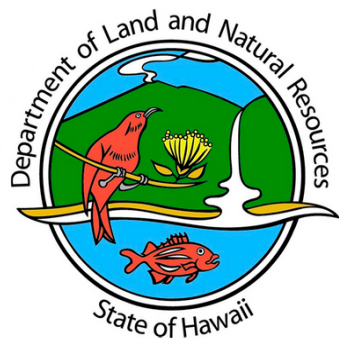
ZOOM HOUSEKEEPING - RAISE HAND FUNCTION

1
At the bottom of your screen, click "React" to open the menu of options

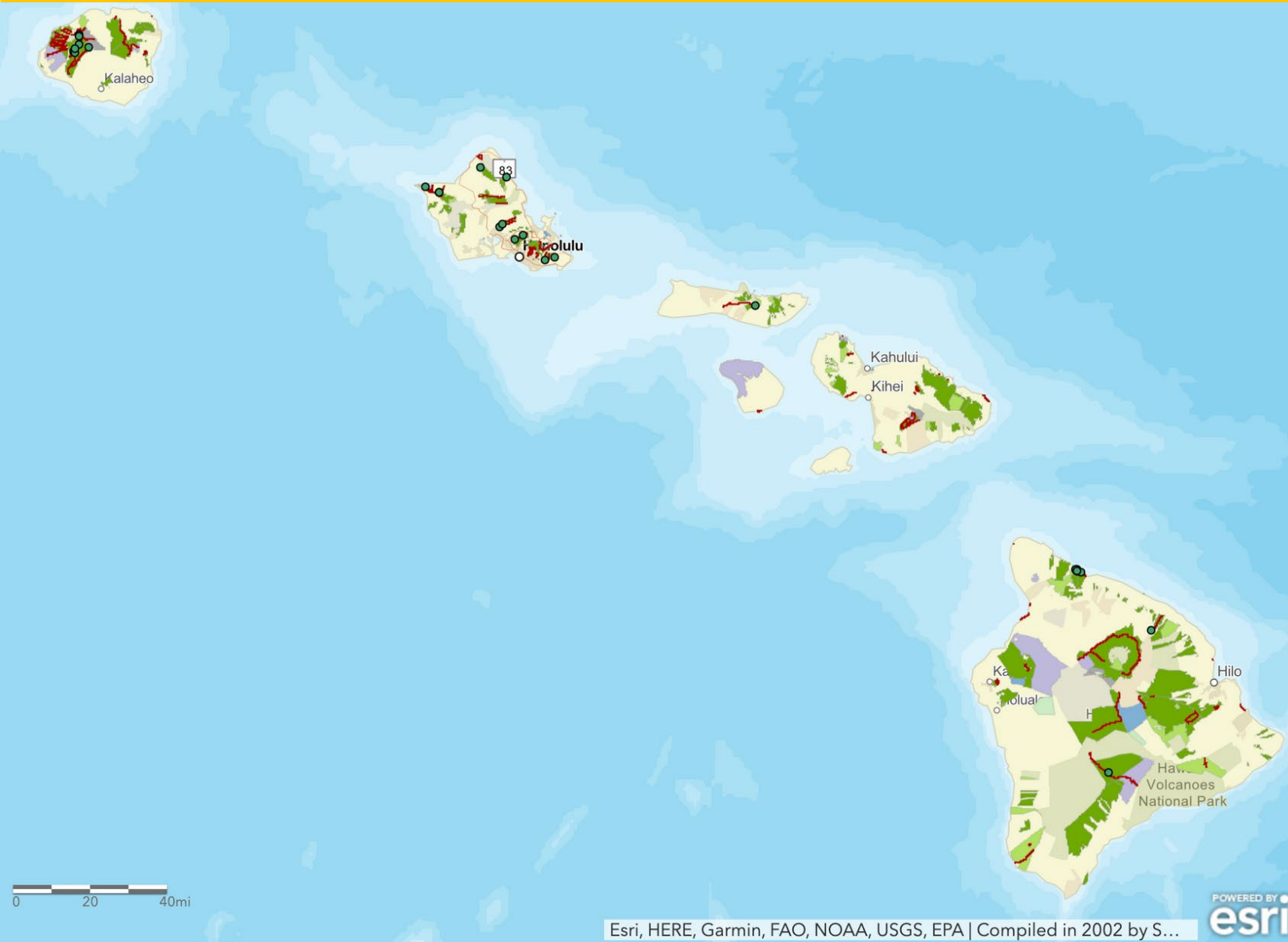
2
Click "Raise Hand"



About Forestry & Wildlife & Nā Ala Hele



ABOUT THE DEPARTMENT OF LAND & NATURAL RESOURCES



The Department of Land and Natural Resources (DLNR) manages 1.3M acres of the 1.6M acres held by the State of Hawai'i.

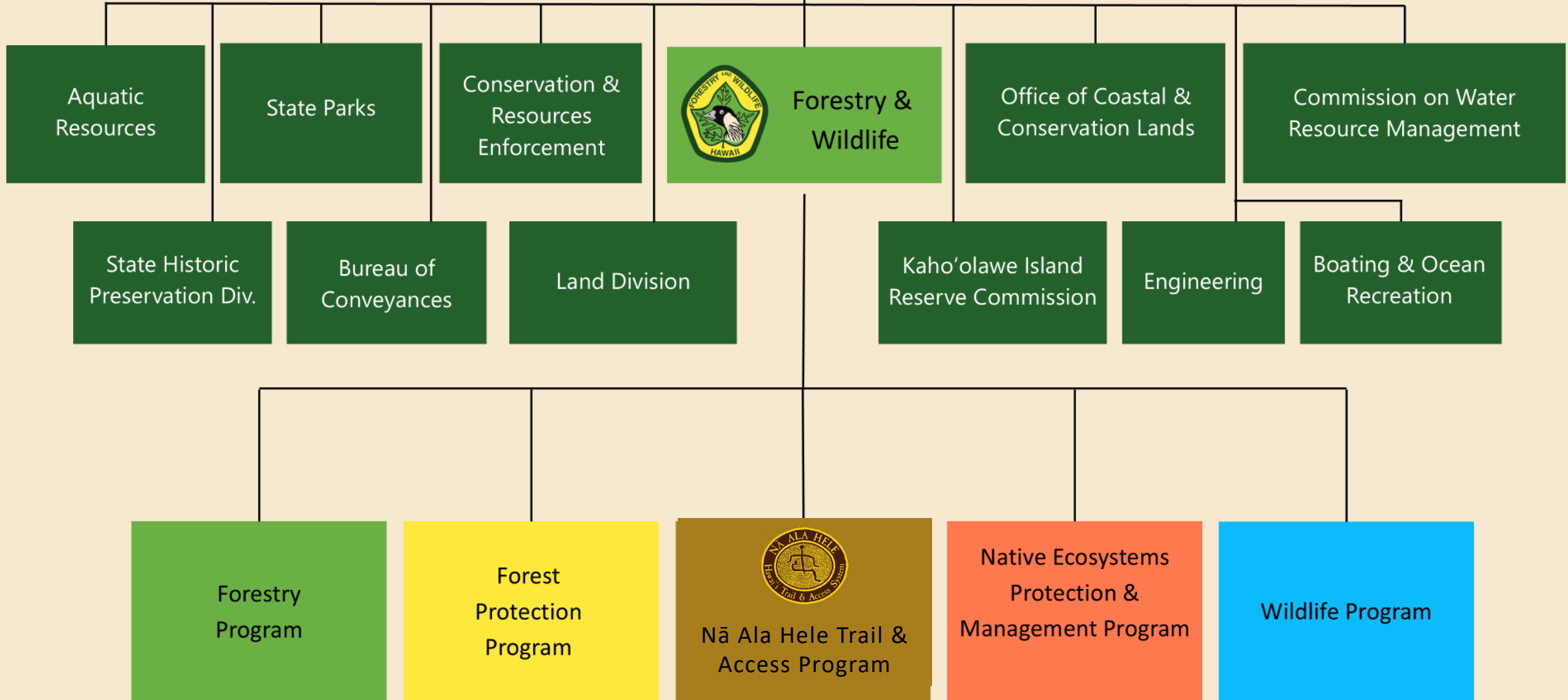
The DLNR manages public lands for public benefit, on behalf of the people of Hawai'i.

Forestry and Wildlife manages about 1M of the 1.3M acres the DLNR manages.





Department of Land & Natural Resources

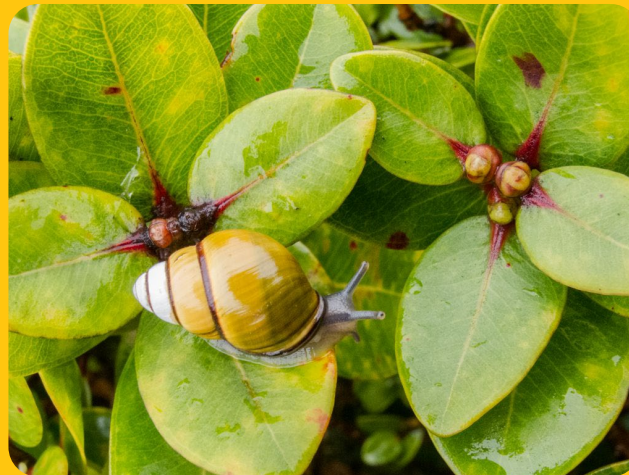


ABOUT NĀ ALA HELE TRAIL & ACCESS PROGRAM

The Nā Ala Hele Trail and Access Program manages trails, roads, off-highway vehicle and mountain bike parks, and other outdoor recreation features, as well as access corridors to those features, for public recreational use.

The bulk of these features occur on lands managed by the Division of Forestry and Wildlife, including forest reserves, natural area reserves, and wildlife sanctuaries.

Other features are on private land, but the access itself is publicly owned.



TRAILS & ACCESSES PROTECT LIFE & PROPERTY

Managing trails and accesses for recreation is only part of the picture. In the agency, staff use trails to:

- Address threats to the health of our forests, including wildfire and invasive species, and the protection of native species, ecosystems, and watersheds.
- Fight fires in wild areas and in the wildland-urban interface



TRAILS & ACCESSES PRESERVE CULTURAL RESOURCES

Trails and accesses are used to get to materials for cultural practices, and trails and sites can have strong cultural and historic ties.



Kinolau & 'amakua



Wahi pana & historic sites



Lā'au lapa'au



Lei making



Carving & canoe building



TRAILS & ACCESSES PRESERVE NATURAL RESOURCES

Trails and accesses are used by Forestry and Wildlife staff to address invasive species control and the protection of native species, along with managing ecosystems and watersheds.



Wildlife Sanctuary Management



Hoofed-Animal Fencing

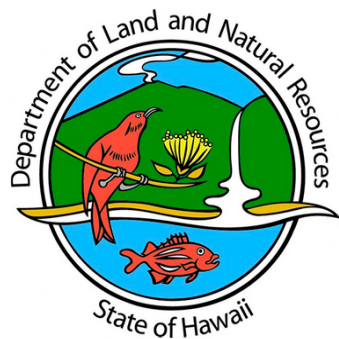


Extreme Botany



Forest Bird Conservation

Trail Planning



TRAIL PLANNING ISSUES

- Large crowds
- Preserving historic features and cultural practices
- Generating enough revenue
- Rule enforcement
- Invasive species management / Endemic species restoration
- Climate change
- Mobility, connectivity, and public accessibility
- Waste management



TRAIL STAKEHOLDERS: A PROGRAM FOR ALL



The Program manages complex priorities and serves a multitude of stakeholders.

**1.4M
Residents**

**~10M annual
visitors**

**Native Hawaiian
Groups**

**Recreational Forest
Users**

Policymakers

Hunters

Funders

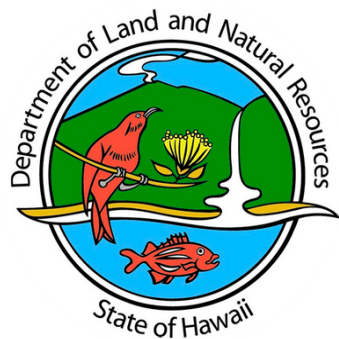
Researchers

Landowners

**Students &
Educators**

The Nā Ala Hele Program Plan

PUBLIC REVIEW DRAFT



THE NĀ ALA HELE PROGRAM PLAN...



Identifies statewide Program vision & goals



Identifies strategies for addressing goals



Creates implementation guidelines



Assesses available resources



Creates a mechanism for future program evaluation

THE PLAN DOES NOT...

- × Pertain to specific issues, problems, or concerns on uses, areas or accesses
- × Identify problems only on a specific trail or access
- × Identify desired outcomes for a feature, trail, or access of particular concern
- × Identify vague or ambiguous priorities or guidelines

OUTREACH FINDINGS

Centralize Essential Functions

Facilitate Community Stewardship

Improve existing Trails

Invest in Trail Planning, Construction, & Management

APPLICATIONS

Build a standardized functional guide that centralizes key functions while allowing flexibility for local needs

Identify existing cooperative agreements, funding opportunities, and staff positions to improve utilization of volunteers and partnerships.

Establish standards based on industry best practices that consider trail use, level of access, ecological impact, and investment.

Build upon industry standards to establish frameworks of analysis for trail managers to evaluate, plan, construct and maintain program features.

PLAN ORGANIZATION

Chapter 1: Vision, Goals, Objectives

Chapter 2: Legal Landscape of the Program

Chapter 3: Coordination & Cooperation

Chapter 4: Planning for Trails and Accesses

Chapter 5: Trail and Access Maintenance

Chapter 6: Program Expansion Tools

Chapter 7: Program Evaluation



VISION STATEMENT

To advance, via the Nā Ala Hele program, a trail and access network and management system which:



Provides a broad range of recreational, subsistence, educational, and mobility opportunities for all of Hawai'i's people



Helps to conserve Hawai'i's cultural and historic heritage, preserve historic trails and features, and support traditional and customary practice uses



Supports the conservation of Hawai'i's natural resources



Preserves access routes to Hawai'i's mountain and ocean resources for public use and enjoyment in perpetuity



PROGRAM GOALS



- 1 **Organization:** To Expand Program Resources & Networks that Help to Achieve Nā Ala Hele's Goals & Objectives.



- 2 **Planning:** To Identify & Select Trails & Accesses for Acquisition, Preservation, Development, & Improvement.



- 3 **Management:** To Provide Adequate Management of All Trails & Accesses Within Nā Ala Hele.



- 4 **Expansion:** To Study and Utilize a Variety of Options and Approaches to Expanding the Trail and Access Network.



- 5 **Program Evaluation:** To Evaluate All Aspects of the Program in Order to Identify Where Improvements Need to be Made.



THE LEGAL LANDSCAPE

Outlines the mandatory actions the Program as stipulated by Chapter 198D, Hawaii Revised Statutes and Chapter 130, Hawaii Administrative Rules.

Details ancillary statutes applicable to the Program:

- Highways Act of 1892
 - Summarizes existing guidance on jurisdictional authority over accesses established before 1892.
- Ka Pa‘akai o Ka ‘Āina
 - Summarizes the State’s obligations under the Ka Pa‘akai O Ka ‘āina vs. Land Use Commission decision.
- Americans with Disabilities Act
 - Summarizes the Code of Federal Regulations (CFR), Title 29, Part 32 and identifies mandatory obligations under the law.





COORDINATION & COOPERATION

- Outlines how Nā Ala Hele is organized within Forestry and Wildlife Division and DLNR
- Identifies synergies between Forestry and Wildlife and other DLNR Divisions
- Addresses Island Advisory Council Representation
- Provides recommendations for internal and external cooperation through communication, data sharing, and pooling resources to achieve mutual goals.
 - Includes considerations for integration of visitor management industry collaboration

Internal Cooperation:

DOFAW Nā Ala Hele Core Committee

Nā Ala Hele Staff

Advisory Councils & Representatives

External Cooperation:

DLNR Divisions & Offices

Various State Agencies

Community Organizations & Non-Profits

Meeting Calendar:

<https://calendar.ehawaii.gov/calendar>

Meeting Minutes:

<https://dlnr.hawaii.gov/recreation/nah>





PLANNING FOR TRAILS & ACCESSES

- Details the statutory requirements of the Program to establish and maintain the trail inventory and classification system
- Establishes new standards for the classification and evaluation of trails and program features
- Provides recommendations for historic/cultural trails, climate adaptation, accessibility, and trail user volume management

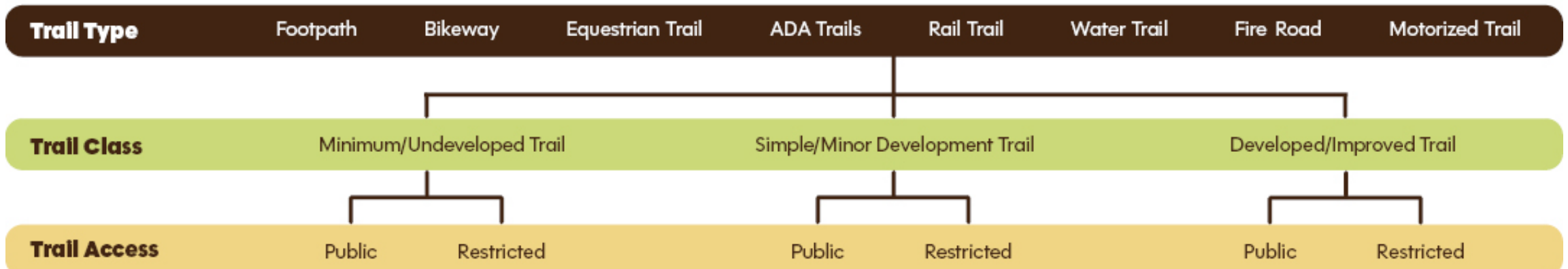
Fire Roads

Roads that provide access for land managers and easement holders into natural areas. The public generally does not have access to these roads by vehicle. These roads provide a significant gap in the vegetation, allowing fire crews to gain better access to the land and more appropriately fight wildland fires.



- › **Intent:** Fire roads should serve primarily as emergency escape routes and rapid response mechanisms for firefighters, resource managers, and agency staff. Fire roads will connect necessary individuals to remote areas for wildfire management and response purposes.
- › **Use Intensity:** Highly restrictive with limited or no vehicular access.
- › **Mode of Transport:** Appropriate firetruck ingress and egress during emergencies and staff vehicle parking.
- › **Facilities:** None. May include connection to fire hydrants as appropriate and available.

Trail Type, Class, & Access Categories:





TRAIL & ACCESS MANAGEMENT

Chapter 5

- Outlines trail guidelines that reflect current industry standards and best practices
- Safety protocols and signage standards
- Visitor use management and overuse mitigation
- Volunteer programs, coordination, safety, and training
- Provides recommendations for volunteer program management, staff and volunteer training, trail assessment, and a signage plan

<https://dlnr.hawaii.gov/dofaw/events/>

Department of Land and Natural Resources
Division of Forestry and Wildlife: Outdoor Recreation

Search this site

Home ▾ About ▾ Contact ▾ Programs ▾ Hike, Ride, & Camp ▾ Hunt ▾ Learn ▾ **Get Involved ▲**

Home » Nā Ala Hele Trail & Access Program

NĀ ALA HELE TRAIL & ACCESS PROGRAM


Nā Ala Hele
Trail & Access Program

Volunteer & Education Events

- Share Your Voice: Comment on plans & policies
- Jobs & Opportunities
- Call for Researchers

All Events

- O'ahu Forestry & Wildlife Events
- Year of Our Community Forests: Volunteer
- Year of Our Community Forests: Tree Adoptions & Celebrations





PROGRAM EXPANSION

- How Nā Ala Hele acquires trails
- Regulatory processes that promote public access to recreational areas
- Discussion on the Legacy Land Conservation Program (LLCP) as a resource for future trail preservation
- Recommendations to track inventory and identify future acquisitions

Eligible LLCP Protected Resources:

Agricultural	Habitat	Parks
Coastal	Natural Areas	Recreation / Hunting
Cultural / Historic	Open Space / Scenic	Watershed

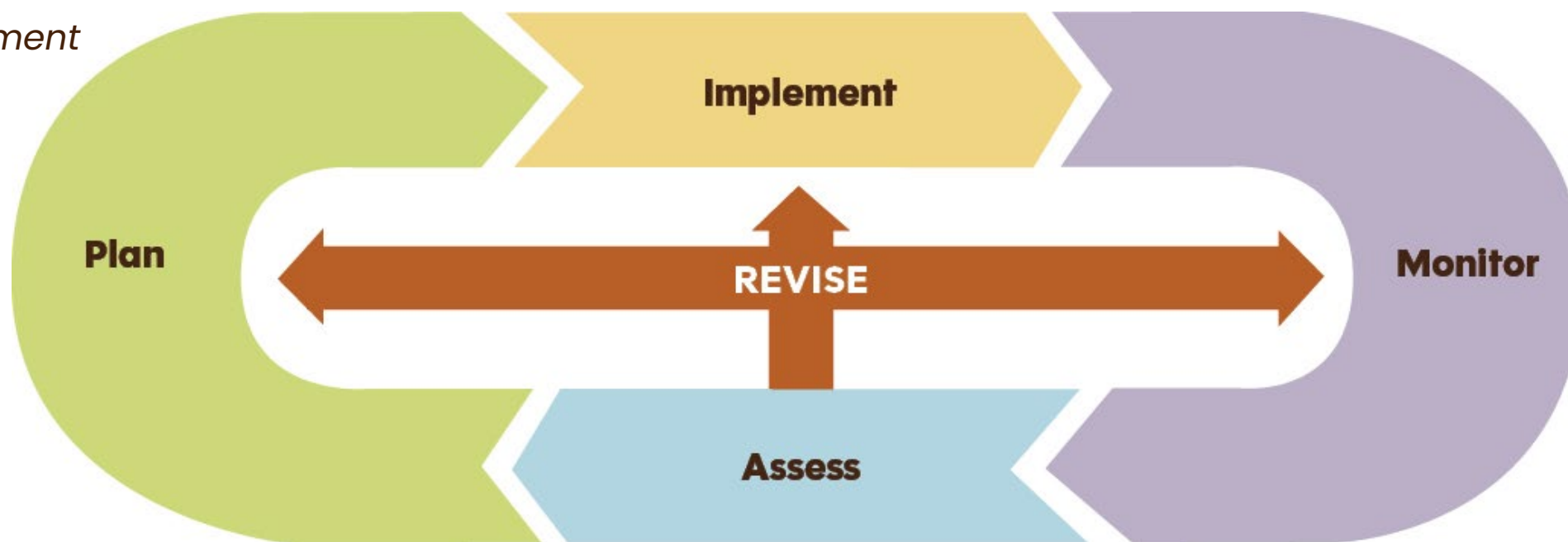




PROGRAM EVALUATION

- Outlines an adaptive management framework for evaluating trail programs or plans
- Provides recommendations for adaptive management procedures and metrics

*Adaptive
Management
Process:*



Na Ala Hele Program Plan Update Schedule



Project Administration

Client Coordination
KICK-OFF MEETING



Background Research

Plan, HRS, and HAR Review



Inventory of Resources



ADA Accessibility and Mobility Analysis



Agency Stakeholder & Community Outreach Engagement

Agency-wide, Visioning and Goal Setting
PREP PREP VISION



Na Ala Hele Advisory Council Meetings
PREP MEETING 1



Legislator Briefings



Key Stakeholder Engagement
STAKEHOLDER DATABASE



Na Ala Hele Program Plan Update

Existing Conditions Analysis



Financial + Organizational Staffing Analysis



DRAFT Plan Update

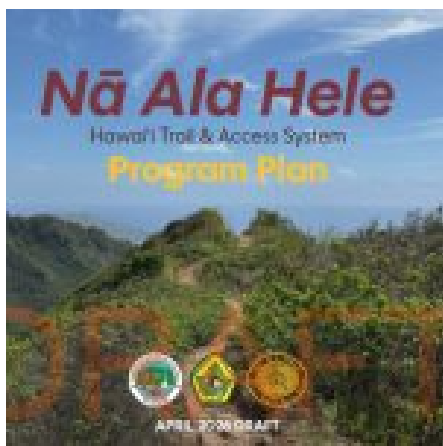


FINAL Plan Update



Mahalo!

<https://dlnr.hawaii.gov/recreation/nah/na-ala-hele-program-plan/>



Draft Nā Ala Hele Program Plan

Over the past several months, PBR has dedicated significant effort to developing the Draft Program Plan. We invite you to review the document and share your feedback, as your insights will be valuable in refining and strengthening the final plan.

Click the button below to view the April 2026 Draft Nā Ala Hele Program Plan:

 [April 2026 Draft Program Plan](#)

Click the button below to send an email with your comments:

 [Send Comments](#)