

United States Department of the Interior
National Park Service**National Register of Historic Places Registration Form**

This form is for use in nominating or requesting determinations for individual properties and districts. See instructions in National Register Bulletin, *How to Complete the National Register of Historic Places Registration Form*. If any item does not apply to the property being documented, enter "N/A" for "not applicable." For functions, architectural classification, materials, and areas of significance, enter only categories and subcategories from the instructions.

1. Name of PropertyHistoric name: Allen W. and E. Vivian Smith Residence

Other names/site number: _____

Name of related multiple property listing:

Honolulu Tudor—French Norman Cottages Thematic Group

(Enter "N/A" if property is not part of a multiple property listing)

2. LocationStreet & number: 4333 - 4335 Royal CircleCity or town: Honolulu State: Hawaii County: HonoluluNot For Publication: ☐ Vicinity: ☐**3. State/Federal Agency Certification**

As the designated authority under the National Historic Preservation Act, as amended,

I hereby certify that this ___ nomination ___ request for determination of eligibility meets the documentation standards for registering properties in the National Register of Historic Places and meets the procedural and professional requirements set forth in 36 CFR Part 60.

In my opinion, the property ___ meets ___ does not meet the National Register Criteria. I recommend that this property be considered significant at the following level(s) of significance:

___ national ___ statewide X local

Applicable National Register Criteria:

___ A ___ B X C ___ D**Signature of certifying official/Title:****Date****State or Federal agency/bureau or Tribal Government**

In my opinion, the property ___ meets ___ does not meet the National Register criteria.

Signature of commenting official:**Date****Title :****State or Federal agency/bureau
or Tribal Government**

A. W. Smith Residence
Name of Property

Honolulu

Hawaii
County and State

4. National Park Service Certification

I hereby certify that this property is:

- ☐ entered in the National Register
☐ determined eligible for the National Register
☐ determined not eligible for the National Register
☐ removed from the National Register
☐ other (explain:) _____

Signature of the Keeper

Date of Action

5. Classification

Ownership of Property

(Check as many boxes as apply.)

Private:

☒

Public – Local

☐

Public – State

☐

Public – Federal

☐

Category of Property

(Check only **one** box.)

Building(s)

☒

District

☐

Site

☐

Structure

☐☐

A. W. Smith Residence Honolulu
Name of Property

Hawaii
County and State

Number of Resources within Property

(Do not include previously listed resources in the count)

Contributing	Noncontributing	
<u>2</u>	<u> </u>	buildings
<u> </u>	<u> </u>	sites
<u> </u>	<u> </u>	structures
<u> </u>	<u> </u>	objects
<u>2</u>	<u>0</u>	Total

Number of contributing resources previously listed in the National Register None

6. Function or Use

Historic Functions

(Enter categories from instructions.)

Domestic/Single Dwelling

Current Functions

(Enter categories from instructions.)

Domestic/Single Dwelling

A. W. Smith Residence
Name of Property

Honolulu

Hawaii
County and State

7. Description

Architectural Classification

(Enter categories from instructions.)

Late Nineteenth/Early Twentieth Century Revivals

Tudor Revival

Materials: (enter categories from instructions.)

Principal exterior materials of the property: wood walls, composition shingle roof, lava rock and wood and stone post and pier foundation

Narrative Description

(Describe the historic and current physical appearance and condition of the property. Describe contributing and noncontributing resources if applicable. Begin with a **summary paragraph** that briefly describes the general characteristics of the property, such as its location, type, style, method of construction, setting, size, and significant features. Indicate whether the property has historic integrity.)

Summary Paragraph

The Allen W. and E. Vivian Smith residence sits in a quiet residential neighborhood near the west end of Royal Place in Kahala. It stands on a sloping 12.344 square foot, terraced lot. The irregularly-shaped, Tudor revival style house has board and batten and horizontal lap sided walls and a composition shingled, intersecting gable roof with overhanging eaves and exposed, rafter tails. The house sits on a lava rock and wood post and pier foundation and features a square lattice apron. To the rear of the lot is a 21' x 26', Tudor revival style cottage, which contributes to the historic character of the property. The 2,216 square foot main house and its accompanying 506 square foot cottage are in good condition and retain their integrity of design, materials, location, workmanship, setting, feelings and associations

Narrative Description

The Smith residence stands on the lower level of the property and climbs up the hillside transitioning from two stories rising from a raised lava rock foundation in the front to a single story in the rear. A non-historic white picket fence separates the property from

A. W. Smith Residence

Honolulu

Hawaii

Name of Property

County and State

the street and a steep black top driveway runs up the right, west, side of the property, terminating next to the cottage. Adjoining the driveway on its west side is a wood fence mounted on a lava rock wall. The wall descends from a height of 5' at the base of the driveway to 17" at the top.

The house faces north and its asymmetric façade is four bays wide. It sits on a raised foundation, which accommodates the garage and a work space, and has a lateral running composition shingled gable roof. The east bay rises two stories in height and has a front facing gable roof which intersects the main roof and extends beyond the ridge line to the rear of the house. The two middle bays each have a set of double doors which open on a mock balcony, while the west most bay includes the entry porch. A shed roof, which flows from the main gable roof, shelters the mock balconies and porch. The mock balconies share a balustrade with 2" x 2" balusters. The front porch has a similar balustrade.

The façade's raised foundation has a lava rock base with board and batten walls above. In the eastern-most bay is a set of three, four-pane sliding windows, and a similar set of windows is in the third bay from the east. On the first story, the east bay's walls are clad in horizontal lap siding and have a centered pair of 6 x 1 double hung sash windows. The gable end of the east bay's second story projects slightly beyond the first story's wall and is of board and batten. The house's board and batten walls are distinctive as they have 12" wide battens set 21" on center making a 9.5" space between the battens. It features a canted bay window supported by two figure four brackets. The canted bay window has a six pane casement window in either side, and the middle has a pair of such windows. The gable above the window is clad in a wavy horizontal lap siding.

A downward sloping concrete driveway runs perpendicular to the main driveway and accesses the garage. Lava rock walls frame this short driveway. The garage retains its original rolling door including the track and hardware. The door is comprised of four board and batten panels, each with a keep window with diamond panes. The garage has a scored concrete floor and its ceiling is open to the first floor's floor joists and base floor. The floor joists have cross bracing. Lava rock walls form a base for the north side's exterior wall and serve as a retaining wall on the south side. Above the retaining wall is a series of doors made of lattice in a square pattern with storage and unimproved space behind them. The south wall is interrupted by a set of fourteen steps, the lower half of which are concrete and the upper half wood, which lead up to the first floor of the house. The east end of the garage is used as a laundry and work space. In the east wall is a pair of four pane sliding windows, as well as a door which leads out to the side yard.

The side yard has three terraces, with 3' high and 1' wide lava rock retaining walls demarcating them. Each of the retaining walls is penetrated by a set of five concrete steps. Lattice fences, with a square pattern, surmount the lava rock walls. At the lower terrace a lattice fence with a gate separates the side and front yards.

A. W. Smith Residence
Name of Property

Honolulu

Hawaii
County and State

Above the entry to the garage is a box bay window with a center 8 x 1 double hung sash window flanked by narrow, 4 x 1 double hung sash windows. The box bay has shutters and is set in a board and batten wall. The east end's gable is clad in wavy, horizontal lap siding and has a diminutive four pane casement window with shutters.

To the left, north, of the garage entry is a set of thirteen concrete steps with 7" treads which lead up to the front entry porch. The steps are framed by lava rock shoulders, approximately 32" high. An 8" square boxed column defines the northwest corner of the entry porch and a balustrade with 2" square balusters runs along the north side of the porch. The porch has a wood floor and ceiling, board and batten walls, and a Dutch door in its east wall. The historic entry door retains its original thumb latch and hardware, and has a window with diamond panes in its upper half. The wood screen door also remains intact.

The front door opens on the living room. The living room has a clay tile floor at the entry, and the remainder of the room is finished with an oak floor with a 8" high baseboard. This floor is used throughout the first floor of the house except in the kitchen and bath. The 8'-9" high ceiling has six console supported beams running across it in a north-south direction. Two sets of double doors in the room's north wall open on a faux balcony. Each door has fifteen panes. They no longer retain their original knobs. In the southeast corner of the room a stair goes up to the second floor. Across the room from the stair, in the west wall, is a box bay window which features a 8 x 1 double hung sash flanked by narrow 4 x 1 double hung sash windows. The seat in the box bay has storage underneath, accessed by four doors in its face. A set of windows similar to those in the box bay are in the living room's south wall. Also in the south wall is a 4' wide round arched opening that leads into the dining room. A similar round arched opening is adjacent to the stair on its north side. It leads into the north-to-south running bedroom hallway.

The hallway accesses two bedrooms and a bath. These all have single panel doors. A door at the north end of the hallway opens on the front bedroom, which has a pair of 6 x 1 double hung sash windows in both its north and east walls. It features a paneled ceiling and a decorative crown molding.

Two doors in the hallway's east wall open on a bathroom and a second bedroom. The bathroom is between the two bedrooms, but may only be accessed from the hall. It has a clay tile floor similar to that at the front entry. It appears to have been remodeled in the 1960s or 1970s, and retains an awning window in its east wall above the shower. The door to the second bedroom retains its original metal knob. This room has board and batten walls and features a box bay in its east wall which holds a child's bed and three drawers under it. At each end of the bed is a pair of eight pane sliding windows, and the box bay's east window has two pair of eight pane sliding windows. .

A. W. Smith Residence

Honolulu

Hawaii

Name of Property

County and State

The bedroom hall terminates at its intersection with an east-west running hall. The east-west running hall has a door with a fifteen pane window and a non-original knob at its east end, which opens on a modern covered deck. At the west end the hall terminates at a side entrance foyer. A single panel door in the north wall of this hall opens on the stairway which descends to the garage, while a single panel door in the south wall of the hall accesses a half bath which has been remodeled, but has a 6 x 6 double hung sash window in its east wall.

The dining room has a ceiling similar to the living room with four console supported beams running across it in a north-south direction. A pair of 6 x 1 double hung sash windows is in its west wall, and adjacent to the round arched opening in its north wall is a built-in china closet with a fifteen pane door. The dining room flows into a foyer which services a side entry, and, in turn, flows into the kitchen. The foyer and kitchen are in the rear, single story wing of the house. This wing, like the front of the house, is characterized by an intersecting gable roof, with the side entry foyer under a north-south running gable roof, while the kitchen is sheltered by an east-west running gable roof. Both roofs have overhanging eaves with exposed rafter tails.

The side entry foyer has an original ceiling light with faux-crystals in a circular gilt frame. In the west wall of the foyer is a set of double doors, each with fifteen panes. The doors do not have their original knobs and they open on a wood landing with three wood steps leading down to a curving brick sidewalk which traverses a small side yard and runs out to the black top driveway. A low lava rock wall, with gate posts separates the side yard from the driveway. The side yard includes a brick patio in front of the kitchen and a brick bordered garden area with the bricks set into the ground on their ends diagonally..

The kitchen has been remodeled, but retains its original pairs of 6 x 6 double hung sash windows in its southeast corner and pair of similar windows in its south wall. Also intact is the fixed twenty pane window in its west wall, which is flanked by 6 x 6 double hung sash windows. The room features an open beam ceiling with simple trusses. The exterior walls of the kitchen are board and batten and the east and west gable ends have wavy, horizontal lap siding. A modern demi-circular fixed window is in both the east and west gable ends. A set of fifteen pane double doors in the kitchen's east wall opens on a non-historic, covered, wood deck. The doors do not retain their original knobs. Three wood steps on the deck's south side go down to the yard, and two wood steps on its north side lead to the concrete sidewalk and steps which traverse the east side yard.

The stairs in the corner of the living room go up to the second floor. The stair has a simple 4" x 4" newel post with a beveled top, and its handrail has cylindrical balusters, which do not appear to be historic. The initial four steps of the stair ascend to a landing where it takes a quarter turn to the right and then go up another twelve steps up to another landing. Here a quarter turn to the left is made with one step up leading to a south to north running hallway. At the upper landing there is a linen closet with five shelves and a single panel door with its original knob and hardware. At the head of the

A. W. Smith Residence

Honolulu

Hawaii

Name of Property

County and State

stairs is an original six pane hopper window. The second floor's floor is of fir and the ceiling follows the slope of the roof.

The short hallway has a sconce, similar in design to the side entry foyer's ceiling light, on its east wall. The hall leads to a single panel door at its north end, which does not have its original knob and opens on a bedroom. The north wall of the bedroom is dominated by the canted bay window and its window seat. The canted bay has single, six pane casement windows to the sides and a pair of six pane casement windows in the center. Along the east wall there is a set of three 4 x 1 double hung sash windows and a built-in set of drawers and a built-in writing desk are immediately to the north of the windows. The set of drawers includes five rows of drawers with the bottom three each having two drawers, while the top two rows have three drawers. The drawers are surmounted by a cabinet with a pair of doors. The drawers and doors retain their original rounded pulls. The writing desk is recessed into the wall and has pigeon holes at its rear. A set of four drawers, which retain their rounded pulls, is to each side of the desk's knee hole.

Three single panel doors are in the south wall of the bedroom. The west most is the entry door, the east most has a beveled mirror and its original glass knob and opens on a closet, and the middle door accesses a bathroom. The bathroom has a clay tile floor similar to that in the first floor bathroom. The bathroom appears to have been remodeled in the 1960s or 1970s and has a 3 x 1 double hung sash window in its south wall.

A louvered door in the west wall of the bedroom does not have its original knob and opens on a long, narrow storage area which follows the ridge of the lateral running gable roof. A four pane casement window is in the storage area's west wall.

A historic cottage is to the south of the main house and is on the property's upper terrace. A 3' high lava rock wall, surmounted by a vinyl fence, separates the cottage's quarter's yard from that of the main house. The cottage is a one-and-one-half story, Tudor-revival style dwelling which faces west. It has vertical tongue and groove walls and a composition shingled, front facing gable roof and overhanging eaves with exposed rafter tails. The single wall building has an external girt. There is half timbering in both its front and rear gable ends, as well as in the projecting, rear, single story kitchen wing's gable end and the north and south facing dormers. It sits on a poured in place concrete foundation.

A more recent, lattice covered pergola, supported at its outside corners by 4" x 4" posts, runs across the front of the cottage. The centered entry to the dwelling has above it a small shed roof, supported by 2" x 6" brackets. The entry has its original wood screen door, as well as a half-timber door with its original thumb latch. The entry opens on the living room which runs the depth of the house. The room has a concrete floor, vertical tongue and groove walls, and an 8' high canec ceiling with crown molding. Two faux-

A. W. Smith Residence

Honolulu

Hawaii

Name of Property

County and State

crystal ceiling lights, similar to the one in the side entry foyer of the main house, adorn the ceiling. A two-tier base board is 10" high with a 3" high bottom and 7" top. The room has two 2 x 2 double hung sash windows in its north wall, with the more westerly window being larger, measuring 43" wide. The west wall contains a 4 x 1 double hung sash window, and the east wall is dominated by a stair to the second floor. The wood stair has a simple 4" x 4" newel post and a handrail with 2" x 2" balusters. Three steps ascend in an easterly direction to a landing where the stair takes a quarter turn to the right and another twelve steps go up to the second floor. A 4 x 1 double hung sash window is at the landing in the east wall, and under the stair is a 4 x 1 double hung sash window.. An alcove is in the southwest corner of the cottage, entered through a wide flat arched opening in the living room's south wall. This room also has a canec ceiling with an ornate faux crystal chandelier, as well as a crown molding different from that of the living room.. Built-in book shelves are along its east wall, and the west wall has a pair of sliding windows, each with three horizontal panes, flanked by similar fixed windows. The south wall contains a pair of three pane horizontal sliding windows.

A two panel door, with its original metal knob and hardware, in the living room's south wall opens on the bathroom, which appears to have been remodeled in the 1960s or 1970s. It has a 1 x 1 double hung sash window in its south wall. The kitchen is in the southeast corner of the house and is entered through an opening without a door in the living room's south wall. It retains its original drawers and cabinets with their round porcelain pulls and also the original enameled sink. It has a tongue and groove ceiling and a non-historic floor covering. It has two 4 x 1 double hung sash windows in its east wall and another in its south wall. A five panel door in the south wall of the kitchen retains its original porcelain knob and hardware. It, and its historic screen door with three panels below and a screen above, open on a laundry lanai. It has a concrete floor and is sunken below the grade of the back yard. It is enclosed with a tongue and groove wall on its east side and a low, curving lava rock retaining wall defines its south and west sides. A concrete step in its west corner provides access to the back yard. A 4" x 4" post with two 2"x 4"s scabbed to it, stands at the southwest corner of the lanai and helps support its slightly pitched, built-up, flat roof.

The living room stairs access the second floor. The second floor is one large room with a fir floor and a canec ceiling that follows the configuration of the roof, except along the ridge line where it is flat. A faux crystal scone high on the stair's west wall illuminates the stairway, as does a 2 x 2 double hung sash window in the east gable. A 6 x 1 double hung sash window is in the west gable, and a similar window is in the north gable roofed dormer, providing good cross ventilation. The room has three two panel doors with their original metal knobs and hardware. Two of the doors open on closets, while the third accesses a half bath in the south gabled dormer. The half bath has a 2 x 2 double hung sash window in its south wall, and appears to have been upgraded.

The Allen W. and Edith Smith residence and cottage retain their historic integrity. The only major changes to the two houses have occurred in their kitchens and bathrooms, which are secondary spaces. The loss of most of the original knobs in the main house,

A. W. Smith Residence Honolulu
Name of Property

Hawaii
County and State

while unfortunate, is not sufficient to detract from the overall historic character of the house as conveyed by its original windows, doors, floors, walls and ceilings. Also the more recent deck off the kitchen is not visible from either the street or the driveway, and does not compromise the original design of the house in any meaningful manner.

A. W. Smith Residence
Name of Property

Honolulu

Hawaii
County and State

8. Statement of Significance

Applicable National Register Criteria

(Mark "x" in one or more boxes for the criteria qualifying the property for National Register listing.)

- ☐ A. Property is associated with events that have made a significant contribution to the broad patterns of our history.
- ☐ B. Property is associated with the lives of persons significant in our past.
- ☒ C. Property embodies the distinctive characteristics of a type, period, or method of construction or represents the work of a master, or possesses high artistic values, or represents a significant and distinguishable entity whose components lack individual distinction.
- ☐ D. Property has yielded, or is likely to yield, information important in prehistory or history.

Criteria Considerations

(Mark "x" in all the boxes that apply.)

- ☐ A. Owned by a religious institution or used for religious purposes
- ☐ B. Removed from its original location
- ☐ C. A birthplace or grave
- ☐ D. A cemetery
- ☐ E. A reconstructed building, object, or structure
- ☐ F. A commemorative property
- ☐ G. Less than 50 years old or achieving significance within the past 50 years

A. W. Smith Residence
Name of Property Honolulu

Hawaii
County and State

Areas of Significance

(Enter categories from instructions.)

Architecture

Period of Significance

1931

Significant Dates

1931

Significant Person

(Complete only if Criterion B is marked above.)

Cultural Affiliation

Architect/Builder

architect: John Alvin Shadinger
contractor: T. Takayama

A. W. Smith Residence

Honolulu

Hawaii

Name of Property

County and State

Statement of Significance Summary Paragraph (Provide a summary paragraph that includes level of significance, applicable criteria, justification for the period of significance, and any applicable criteria considerations.)

The Allen W. and E. Vivian Smith residence is significant on the local level under criterion C, as a good example of a 1930s Tudor revival style house in Honolulu. The house includes a number of distinctive features and is typical of its period in its design, materials, workmanship and methods of construction.

The 1931 period of significance was chosen in accordance with the instructions on how to complete a national register nomination form provided in National Register Bulletin 16A: "For architecturally significant properties, the period of significance is the date of construction and/or the dates of any significant alterations and additions." As is noted in the above section, "significant dates", 1931 is the year of construction.

Narrative Statement of Significance (Provide at least **one** paragraph for each area of significance.)

The Smith residence is to be included in the Honolulu Tudor-French Norman Cottages Thematic Group. At the time that multiple property nomination form was prepared, the then owner of the house did not wish to have it listed in the Hawaii or National Registers of Historic Places. Since that time the house has been sold to others.

There are presently twenty Tudor style residences in the Hawaii Register of Historic Places, which include the Oakley Residence at 2110 Kakela, the Withington Cottage on Poloke Place, the Withington Residence at 3150 Huelani Place, the Braly house on Ferdinand Avenue, the McVeagh residence in Nuuanu, and fifteen houses originally listed in the English Tudor/French Norman Cottages thematic property listing. All of these houses date from the nineteen teens through the early nineteen thirties and almost all include half timbering as one of their signifiers.

The Smith residence is a good example of a Tudor revival style house of the 1930s in Honolulu, and one of the larger examples of the style in the city. Its steep gabled roofs, Rambling floor plan, and asymmetric massing are typical of the style, as is the half timbering on the accompanying cottage. In addition the living and dining rooms' console supported beamed ceilings, and the diamond paned keep windows further convey the Tudor spirit. The use of bay windows in the second story and living room are a very late appearance of these features and may be a result of an effort to playfully convey the romantic fantasy of this rendering of the Tudor style, by breaking up the flatness of the exterior wall. A similar motivation may be behind the use of the wide battens and wavy horizontal lap siding in the gable ends.

The Smith residence was designed by Honolulu architect J. Alvin Shadinger. Shadinger (1883-1955) was born in Gardenville, Pennsylvania and grew up in Abilene, Kansas. In

A. W. Smith Residence

Honolulu

Hawaii

Name of Property

County and State

1893 his family moved to Chicago, Illinois. He and his wife came to Hawaii in 1914, where he worked for the Lighthouse Service as its chief clerk and disbursing officer, and in 1922 he began designing houses in Hawaii. Throughout the 1920s he worked with developers to design houses on newly opened subdivisions, such as Hillside Avenue in Manoa in 1925 and the Bush Tract in 1928. In 1927 he went to work in Lewers & Cooke's Building Department and also assumed the role of developer on a number of single lots on which he designed and built speculative houses that he sold. Over the course of his thirty year career, it was estimated he designed over two million dollars worth of housing, with most of the houses costing less than \$5,000 to build. He rendered a number of houses in the Tudor revival style, including his own at the corner of Kahala Avenue and Hunakai Street (1931), which is included in the Tudor-Norman Cottage Thematic nomination.

Edith Vivian Smith was the daughter of J. Alvin and Edith May Shadinger. She was born in Chicago, Illinois, but spent most of her life in Honolulu, graduating from Punahou. She met Allen W. Smith, a 1923 graduate of West Point, while he was serving in Hawaii, and the couple wed in 1928. Following his discharge from the Army Mr. Smith (1901-1966) worked for W. A. Ramsay Company as a sales manager. In 1930, J. Alvin Shadinger designed a Tudor revival style house in Manoa on Vista Way (no longer extant) for the couple, and then in 1931 designed this Kahala house for them. Besides designing this Tudor revival style house for his daughter and son-in-law, he also designed in 1931 "semi-English style" houses for D. J. Kirby on Manoa Road and Dr. James Wayson on Alani Drive. In addition he designed that year a bungalow with half timbering in its gables for Mrs. L. L. Camron on Kaaipu Street in Manoa.

During World War II Mr. Smith served as a Colonel in the Signal Corps, returning to W. A. Ramsay after the war. He retired in 1965 and died a year later.

A. W. Smith Residence
Name of Property

Honolulu

Hawaii
County and State

9. Major Bibliographical References

Bibliography (Cite the books, articles, and other sources used in preparing this form.)

Polk's City Directories for Honolulu, 1928-1935.

City and County Tax Office records.

State Bureau of Conveyances, book 1143, page 191

"Work is Started on Kahala Residence for Allen W. Smith," *Honolulu Star Bulletin*, October 31, 1931, page 14

"Allen W. Smith to Have New Home in Kahala," *Honolulu Advertiser*, November 8, 1931, page 16

"Mr. and Mrs. Shadinger Announce the Engagement of Their Daughter," *Honolulu Advertiser*, April 17, 1927, page 33

"Rites to be Held at Central Union for John Shadinger," *Honolulu Star Bulletin*, December 26, 1955, page 9

"Obituaries, Allen W. Smith" *Honolulu Star Bulletin*, October 13, 1966, page 83

Previous documentation on file (NPS):

- ☐ preliminary determination of individual listing (36 CFR 67) has been requested
- ☐ previously listed in the National Register
- ☐ previously determined eligible by the National Register
- ☐ designated a National Historic Landmark
- ☐ recorded by Historic American Buildings Survey # _____
- ☐ recorded by Historic American Engineering Record # _____
- ☐ recorded by Historic American Landscape Survey # _____

Primary location of additional data:

- ☒ State Historic Preservation Office
- ☐ Other State agency
- ☐ Federal agency
- ☐ Local government
- ☐ University
- ☐ Other
- Name of repository: _____

Historic Resources Survey Number (if assigned): _____

A. W. Smith Residence
Name of Property

Honolulu

Hawaii
County and State

10. Geographical Data

Acreeage of Property less than one acre

Use either the UTM system or latitude/longitude coordinates

Latitude/Longitude Coordinates

Datum if other than WGS84: Bing Maps
(enter coordinates to 6 decimal places)

- | | |
|------------------------|-----------------------|
| 1. Latitude: 21.259775 | Longitude: 157.792683 |
| 2. Latitude: | Longitude: |
| 3. Latitude: | Longitude: |
| 4. Latitude: | Longitude: |

Or

UTM References

Datum (indicated on USGS map):

☐ NAD 1927 or ☐ NAD 1983

- | | | |
|----------|-----------|-----------|
| 1. Zone: | Easting: | Northing: |
| 2. Zone: | Easting: | Northing: |
| 3. Zone: | Easting: | Northing: |
| 4. Zone: | Easting : | Northing: |

Verbal Boundary Description (Describe the boundaries of the property.)

The property being nominated includes all the property owned by Queens Surf LLC in 2021 as described by Tax Map Key (1) 3-5-002: 043.

Boundary Justification (Explain why the boundaries were selected.)

This is the parcel of land associated with this residence since its construction.

A. W. Smith Residence
Name of Property

Honolulu

Hawaii
County and State

11. Form Prepared By

name/title: Don Hibbard
organization: self
street & number: 45-287 Kokokahi Place
city or town: Kaneohe state: Hawaii zip code: 96744
e-mail: _____
telephone: (808)-542-6230
date: March 24, 2021

Additional Documentation

Submit the following items with the completed form:

- **Maps:** A USGS map or equivalent (7.5 or 15 minute series) indicating the property's location.
- **Tax Map**
- **Additional items:** sketch of floor plan
- **Owner:** Queen's Surf LLC
4132 Black Point Place
Honolulu, Hawaii 96816

Paperwork Reduction Act Statement: This information is being collected for applications to the National Register of Historic Places to nominate properties for listing or determine eligibility for listing, to list properties, and to amend existing listings. Response to this request is required to obtain a benefit in accordance with the National Historic Preservation Act, as amended (16 U.S.C.460 et seq.).

Estimated Burden Statement: Public reporting burden for this form is estimated to average 100 hours per response including time for reviewing instructions, gathering and maintaining data, and completing and reviewing the form. Direct comments regarding this burden estimate or any aspect of this form to the Office of Planning and Performance Management, U.S. Dept. of the Interior, 1849 C. Street, NW, Washington, DC.

A. W. Smith Residence
Name of Property Honolulu

Hawaii
County and State

TMK Map

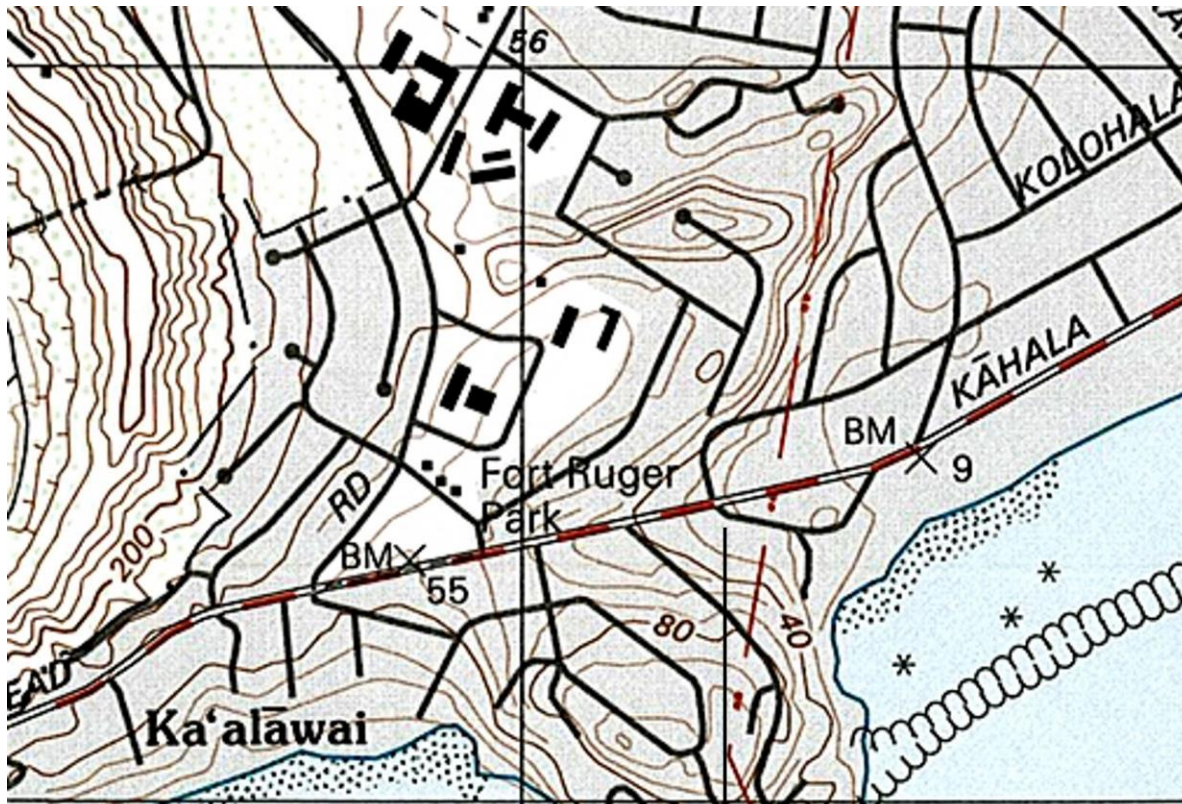


A. W. Smith Residence
Name of Property

Honolulu

Hawaii
County and State

USGS Map

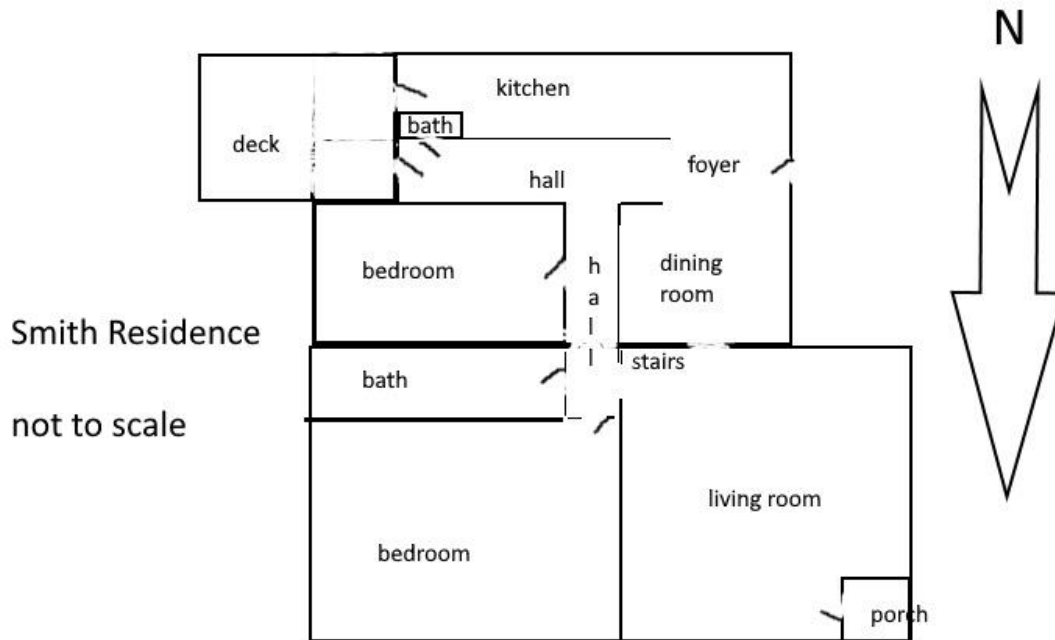


A. W. Smith Residence

A. W. Smith Residence
Name of Property Honolulu

Hawaii
County and State

Floor Plan:



A. W. Smith Residence
Name of Property Honolulu

Hawaii
County and State

Photo Log

Name of Property: Smith Residence

City or Vicinity: Honolulu

County: Honolulu State: Hawaii

Photographer: Kikuyo Akao

Date Photographed: March 2, 2021

View of the house and rear cottage from the northwest

1 of 16



A. W. Smith Residence Honolulu
Name of Property

Hawaii
County and State

Photo Log

Name of Property: Smith Residence

City or Vicinity: Honolulu

County: Honolulu State: Hawaii

Photographer: Kikuyo Akao

Date Photographed: March 2, 2021

View of the front from the north

2 of 16



A. W. Smith Residence
Name of Property Honolulu

Hawaii
County and State

Photo Log

Name of Property: Smith Residence

City or Vicinity: Honolulu

County: Honolulu State: Hawaii

Photographer: Kikuyo Akao

Date Photographed: March 2, 2021

View of the side entry and kitchen wing from the west

3 of 16



A. W. Smith Residence Honolulu
Name of Property

Hawaii
County and State

Photo Log

Name of Property: Smith Residence

City or Vicinity: Honolulu

County: Honolulu State: Hawaii

Photographer: Kikuyo Akao

Date Photographed: March 2, 2021

View of the garage and front entry steps from the west

4 of 16



A. W. Smith Residence Honolulu
Name of Property

Hawaii
County and State

Photo Log

Name of Property: Smith Residence

City or Vicinity: Honolulu

County: Honolulu State: Hawaii

Photographer: Kikuyo Akao

Date Photographed: March 2, 2021

View of the front entry from the west

5 of 16



A. W. Smith Residence Honolulu
Name of Property

Hawaii
County and State

Photo Log

Name of Property: Smith Residence

City or Vicinity: Honolulu

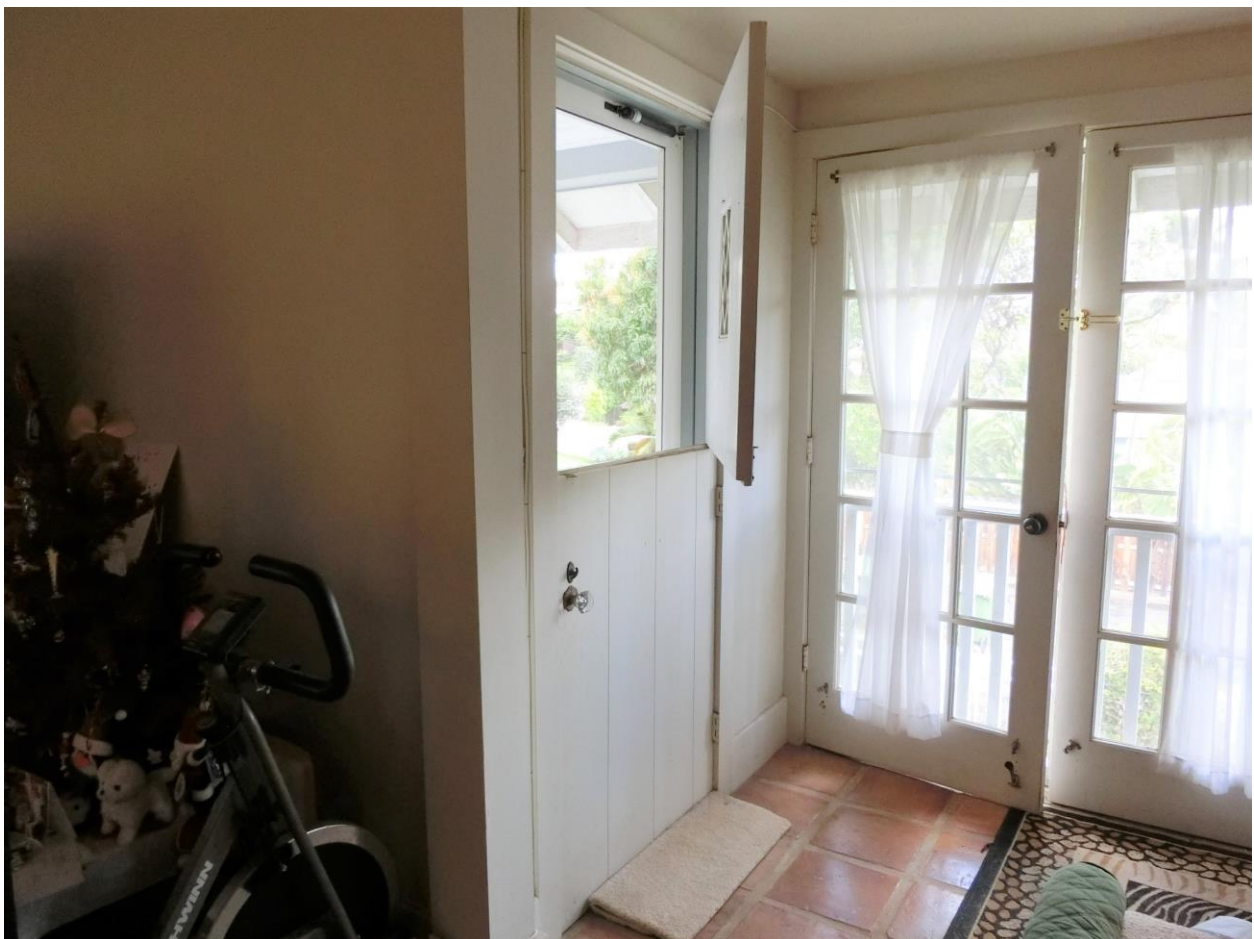
County: Honolulu State: Hawaii

Photographer: Kikuyo Akao

Date Photographed: March 2, 2021

View of the front Dutch door from the southeast

6 of 16



A. W. Smith Residence Honolulu
Name of Property

Hawaii
County and State

Photo Log

Name of Property: Smith Residence

City or Vicinity: Honolulu

County: Honolulu State: Hawaii

Photographer: Kikuyo Akao

Date Photographed: March 2, 2021

View of the living room from the stair from the east

7 of 16



A. W. Smith Residence Honolulu
Name of Property

Hawaii
County and State

Photo Log

Name of Property: Smith Residence

City or Vicinity: Honolulu

County: Honolulu State: Hawaii

Photographer: Kikuyo Akao

Date Photographed: March 2, 2021

View of the living room from the northwest

8 of 16



A. W. Smith Residence
Name of Property Honolulu

Hawaii
County and State

Photo Log

Name of Property: Smith Residence

City or Vicinity: Honolulu

County: Honolulu State: Hawaii

Photographer: Kikuyo Akao

Date Photographed: March 2, 2021

View of the stair from the north

9 of 16



A. W. Smith Residence Honolulu
Name of Property

Hawaii
County and State

Photo Log

Name of Property: Smith Residence

City or Vicinity: Honolulu

County: Honolulu State: Hawaii

Photographer: Kikuyo Akao

Date Photographed: March 2, 2021

View of the dining room from the south

10 of 16



A. W. Smith Residence
Name of Property Honolulu

Hawaii
County and State

Photo Log

Name of Property: Smith Residence

City or Vicinity: Honolulu

County: Honolulu State: Hawaii

Photographer: Kikuyo Akao

Date Photographed: March 2, 2021

View of the south-most bedroom-first floor from the northwest

11 of 16



A. W. Smith Residence Honolulu
Name of Property

Hawaii
County and State

Photo Log

Name of Property: Smith Residence

City or Vicinity: Honolulu

County: Honolulu State: Hawaii

Photographer: Kikuyo Akao

Date Photographed: March 2, 2021

View of the second floor hall from the north

12 of 16



A. W. Smith Residence Honolulu
Name of Property

Hawaii
County and State

Photo Log

Name of Property: Smith Residence

City or Vicinity: Honolulu

County: Honolulu State: Hawaii

Photographer: Kikuyo Akao

Date Photographed: March 2, 2021

View of the cottage from the southwest

13 of 16



A. W. Smith Residence
Name of Property Honolulu

Hawaii
County and State

Photo Log

Name of Property: Smith Residence

City or Vicinity: Honolulu

County: Honolulu State: Hawaii

Photographer: Kikuyo Akao

Date Photographed: March 2, 2021

View of the cottage's front door from the west

14 of 16



A. W. Smith Residence Honolulu
Name of Property

Hawaii
County and State

Photo Log

Name of Property: Smith Residence

City or Vicinity: Honolulu

County: Honolulu State: Hawaii

Photographer: Kikuyo Akao

Date Photographed: March 2, 2021

View of the cottage's living room from the east

15 of 16



A. W. Smith Residence Honolulu
Name of Property

Hawaii
County and State

Photo Log

Name of Property: Smith Residence

City or Vicinity: Honolulu

County: Honolulu State: Hawaii

Photographer: Kikuyo Akao

Date Photographed: March 2, 2021

View of the cottage's second floor bedroom from the west

16 of 16

