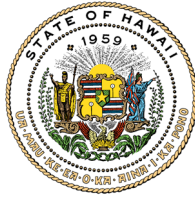


JOSH GREEN, M.D.
GOVERNOR | KE KIA'ĀINA

SYLVIA LUKE
LIEUTENANT GOVERNOR | KA HOPE KIA'ĀINA



**STATE OF HAWAII | KA MOKU'ĀINA 'O HAWAI'I
DEPARTMENT OF LAND AND NATURAL RESOURCES
KA 'OIHANA KUMUWAIWAI 'ĀINA**

STATE HISTORIC PRESERVATION DIVISION
KAKUHIHEWA BUILDING
601 KAMOKILA BLVD, STE 555
KAPOLEI, HAWAII 96707

DAWN N.S. CHANG
CHAIRPERSON
BOARD OF LAND AND NATURAL RESOURCES
COMMISSION ON WATER RESOURCE MANAGEMENT

RYAN K.P. KANAKA'OLE
FIRST DEPUTY

CIARA W.K. KAHAHANE
DEPUTY DIRECTOR - WATER

AQUATIC RESOURCES
BOATING AND OCEAN RECREATION
BUREAU OF CONVEYANCES
COMMISSION ON WATER RESOURCE MANAGEMENT
CONSERVATION AND COASTAL LANDS
CONSERVATION AND RESOURCES ENFORCEMENT
ENGINEERING
FORESTRY AND WILDLIFE
HISTORIC PRESERVATION
KAHOOLAWE ISLAND RESERVE COMMISSION
LAND
STATE PARKS

MEMORANDUM

TO: Members, Hawai'i Island Burial Council

FROM: Traven Apiki, Burial Sites Specialist

RE: **Contents of December 8, 2025 Hawaii Island Burial Council Board Packet**

The contents of the December 8, 2025 Hawaii Island Board packet are as follows:

1. HIBC December 8, 2025 Meeting Memo
2. HIBC December 8, 2025 Meeting Agenda
3. HIBC September 18, 2025 Draft Meeting Minutes
4. HIBC November 20, 2025 Draft Meeting Minutes
5. Descendancy Recognition Recommendation of Kalena K. Blakemore to Unidentified Native Hawaiian Skeletal Remains, SIHP # 50-10-02-31544 Located at Honopueo Ahupua'a, Kohala District, Island of Hawai'i, TMK (3) 5-4-009:020.
6. Letter from Hawai'i Department of Transportation, dated November 28, 2025, Regarding Section 106 Consultation on the Cellular Vehicle-To- Everything (V2X) System.
7. Letter from Los Rios Community College District, dated October 27, 2025, Regarding NAGPRA Section 6 Summary Provision and Invitation to Consult.
8. Letter from Staten Island Museum, dated August 13, 2025, Regarding NAGPRA Section 6 Summary Submission and Invitation to Consult on Tapa Cloth and Skirt Attributed to Hawai'i.
9. Letter from Department of the Navy, dated September 17, 2025, Regarding Notice of Availability of the Final EIS for Hawaii-California Training and Testing.
10. UPDATE on the Revised Descendancy Claim Application and Administrative Information and Clarification Regarding the Definition, Recognition, and Application Process for Cultural Descendants.
11. Letter from Department of Transportation, dated October 23, 2025, Regarding Section 106 Consultation on the Keaau-Pahoa Road Intersection Improvements at Makuu Drive and Orchidland Drive Keaau and Waikahekahe Ahupuaa, Puna District, Island of Hawai'i, TMK(s): (3) 1-5-015:180, 188, and 999 (Portions), (3) 1-5-016:161 and 999 (Portions), (3) 1-5-033:249, 250, 251, and 999 (Portions), (3) 1-6-005:165 (Portion), (3)

1-6-009:244 (Portion), (3) 1-6-009:245, 246, and 388 (Portions), and (3) 1-6-010:137 (Portion).

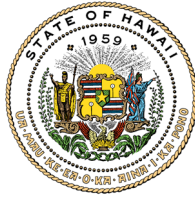
Board Packets Available Online at:

<https://dlnr.hawaii.gov/shpd/about/branches/ibc/meetings/>

Hawai‘i Island Burial Council Members		
Representation	Name	Term Expiration Date
Puna	Shantel Freeman	2025-2029
Hilo	Cyrus Seto	2025-2029
Hamakua	I’Inimaikalani Kahakalau	2023-2027
Kohala	Leimana Abenes	2025-2029
Kona	Cayla Crivello	2023-2027
Ka‘ū	Desmon Haumea	2022-2026
Large Landowner	Vacant	
Large Landowner	Vacant	
Large Landowner	Vacant	

JOSH GREEN, M.D.
GOVERNOR | KE KIA'ĀINA

SYLVIA LUKE
LIEUTENANT GOVERNOR | KA HOPE KIA'ĀINA



**STATE OF HAWAII | KA MOKU'ĀINA 'O HAWAI'I
DEPARTMENT OF LAND AND NATURAL RESOURCES
KA 'OIHANA KUMUWAIWAI 'ĀINA**

STATE HISTORIC PRESERVATION DIVISION
KAKUHIHEWA BUILDING
601 KAMOKILA BLVD, STE 555
KAPOLEI, HAWAII 96707

DAWN N.S. CHANG
CHAIRPERSON
BOARD OF LAND AND NATURAL RESOURCES
COMMISSION ON WATER RESOURCE MANAGEMENT

RYAN K.P. KANAKA'OLE
FIRST DEPUTY

CIARA W.K. KAHAHANE
DEPUTY DIRECTOR - WATER

AQUATIC RESOURCES
BOATING AND OCEAN RECREATION
BUREAU OF CONVEYANCES
COMMISSION ON WATER RESOURCE MANAGEMENT
CONSERVATION AND COASTAL LANDS
CONSERVATION AND RESOURCES ENFORCEMENT
ENGINEERING
FORESTRY AND WILDLIFE
HISTORIC PRESERVATION
KAHOOLAWE ISLAND RESERVE COMMISSION
LAND
STATE PARKS

MEMORANDUM

TO: Members, Hawai'i Island Burial Council

FROM: Traven Apiki, Burial Sites Specialist

RE: **Notification of the Next Hawai'i Island Burial Council Meeting**

The Hawai'i Island Burial Council meeting has been scheduled as follows:

Date: Monday, December 8, 2025
Time: 9:00 AM – 1:30 PM
Place: Online via Teams
—AND—
Division of Forestry and Wildlife
Conference Room
19 E. Kāwili Street
Hilo, HI 96720

Board members, staff, applicants, and testifiers can choose to participate either in-person or via ICT

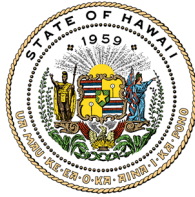
Teams Meeting Link:
<https://zoom.us/j/94471372889>

Meeting ID: 944 7137 2889
Passcode: 6cw2J9

Board Packets Available Online at:
<https://dlnr.hawaii.gov/shpd/about/branches/ibc/meetings/>

JOSH GREEN, M.D.
GOVERNOR | KE KIA'ĀINA

SYLVIA LUKE
LIEUTENANT GOVERNOR | KA HOPE KIA'ĀINA



**STATE OF HAWAII | KA MOKU'ĀINA 'O HAWAI'I
DEPARTMENT OF LAND AND NATURAL RESOURCES
KA 'OIHANA KUMUWAIWAI 'ĀINA**

STATE HISTORIC PRESERVATION DIVISION
KAKUHIHEWA BUILDING
601 KAMOKILA BLVD, STE 555
KAPOLEI, HAWAII 96707

DAWN N.S. CHANG
CHAIRPERSON
BOARD OF LAND AND NATURAL RESOURCES
COMMISSION ON WATER RESOURCE MANAGEMENT

RYAN K.P. KANAKA'OLE
FIRST DEPUTY

CIARA W.K. KAHAHANE
DEPUTY DIRECTOR - WATER

AQUATIC RESOURCES
BOATING AND OCEAN RECREATION
BUREAU OF CONVEYANCES
COMMISSION ON WATER RESOURCE MANAGEMENT
CONSERVATION AND COASTAL LANDS
CONSERVATION AND RESOURCES ENFORCEMENT
ENGINEERING
FORESTRY AND WILDLIFE
HISTORIC PRESERVATION
KAHOOLAWE ISLAND RESERVE COMMISSION
LAND
STATE PARKS

**AGENDA
HAWAI'I ISLAND BURIAL COUNCIL MEETING**

DATE: Monday, December 8, 2025
TIME: 9:00 AM – 1:30 PM
PLACE: Online via Zoom
—AND—
Division of Forestry and Wildlife
Conference Room
19 E. Kāwili Street
Hilo, HI 96720

This meeting will be held using interactive conference technology (ICT) under section 92-3.7, Hawaii Revised Statutes (HRS). Board members, staff, applicants, testifiers, and the public can choose to participate in person, online via ICT, or by telephone at +1 669 444 9171.

To Attend/Provide Testimony via ICT:
<https://zoom.us/j/94471372889>

Meeting ID: 944 7137 2889
Passcode: 6cw2J9

Board Packets Available Online at:
<https://dlnr.hawaii.gov/shpd/about/branches/ibc/meetings/>

- I. CALL TO ORDER**
- II. ROLL CALL/PULE**
- III. MINUTES**

- A. Approval of the Minutes for September 18, 2025.**
- B. Approval of the Minutes for November 20, 2025.**

IV. NEW BUSINESS

- A. Discussion and Approval of the Department's Recommendation to Recognize the Applicant, Kalena K. Blakemore to Unidentified Native Hawaiian Skeletal Remains,**

SIHP # 50-10-02-31544 Located at Honopueo Ahupua‘a, Kohala District, Island of Hawai‘i, TMK (3) 5-4-009:020.

The Council may elect to go into executive session pursuant to HRS § 6E-43.5(e). The Council may close a meeting whenever location or description of a Native Hawaiian Burial site is under consideration. The chairperson, by concurrence of a majority of members present at the meeting, shall be authorized to require the public to leave the meeting while the confidential matter is being discussed and reopen the meeting once the confidential matter is no longer being considered.

- B. Discussion Regarding Community Concerns Relating to Queen Emma Lot Cemetery Located at Kawaihae Ahupua‘a, Kohala District, Island of Hawai‘i, TMK (3) 6-2-002:006.**
- C. Discussion Regarding the Review of Sunhine Law as it Pertains to the Hawaii Island Burial Council to Include Supporting Discussion on Hawaii Administrative Rules (HAR) § 13-300-25 and § 13-300-26.**

V. INADVERTENTS/COMMUNICATIONS

- A. Discussion Regarding Inadvertent Discoveries of Unidentified Native Hawaiian Skeletal Remains at Hulihe‘e Palace, Keopu Ahupua‘a, North Kona District, Island of Hawai‘i, TMK: (3) 7-5-007-020.**
- B. Discussion Regarding Letter from Hawai‘i Department of Transportation, dated November 28, 2025, Regarding Section 106 Consultation on the Cellular Vehicle-To-Everything (V2X) System.**
- C. Discussion Regarding Letter from Los Rios Community College District, dated October 27, 2025, Regarding NAGPRA Section 6 Summary Provision and Invitation to Consult.**
- D. Discussion Regarding Letter from Staten Island Museum, dated August 13, 2025, Regarding NAGPRA Section 6 Summary Submission and Invitation to Consult on Tapa Cloth and Skirt Attributed to Hawai‘i.**
- E. Discussion Regarding Letter from Department of the Navy, dated September 17, 2025, Regarding Notice of Availability of the Final EIS for Hawaii-California Training and Testing.**
- F. Discussion Regarding Updates to the State Historic Preservation Division’s Revised Descendancy Claim and the State Historic Preservation Division’s Application Process for Cultural Descendants.**
- G. Discussion Regarding Letter from Department of Transportation, dated October 23, 2025, Regarding Section 106 Consultation on the Keaau-Pahoa Road Intersection Improvements at Makuu Drive and Orchidland Drive Keaau and Waikahekahe Ahupuaa, Puna District, Island of Hawai‘i, TMK(s): (3) 1-5-015:180, 188, and 999 (Portions), (3) 1-5-016:161 and 999 (Portions), (3) 1-5-033:249, 250, 251, and 999 (Portions), (3) 1-6-005:165 (Portion), (3) 1-6-009:244 (Portion), (3) 1-6-009:245, 246, and 388 (Portions), and (3) 1-6-010:137 (Portion).**

VI. ANNOUNCEMENTS

A. The Next HIBC Meeting is scheduled for Thursday, January 15, 2026, 9:30 A.M., TBD.

VII. ADJOURNMENT

To Provide Written Testimony:

We encourage interested persons to submit written testimony in advance of the meeting, which will be distributed to Board members prior to the meeting and allow a timely review. Please submit written testimony via email to: traven.apiki@hawaii.gov. Written testimonies can also be mailed to: 40 Po'okela Street, Hilo, HI 96720. Written testimonies may be posted upon the HIBC meeting website; as a precaution, please be mindful with any personal information prior to submitting unless you intend it to be shared. Late written testimony will be retained as part of the record and distributed to HIBC members as soon as practicable, but we cannot ensure the HIBC will receive it in sufficient time to review, prior to decision-making.

To Provide In-Person Oral Testimony:

Attend in-person at: 19 E. Kāwili Street, Hilo HI 96720.

To Provide Testimony by Telephone:

On the day of the meeting at the start of the agenda item you wish to testify on, dial +1 253-205-0468 and follow the prompts.

To Provide Video/Zoom Testimony:

Please send your request in a timely manner to: traven.apiki@hawaii.gov with your information, email address, and the agenda item you wish to testify on. Once your request has been received, you will receive a confirmation email with pertinent information. You may testify without signing up in advance.

We kindly ask that all oral/video testimony be limited to not more than three (3) minutes. We ask that you identify yourself and any affiliation before speaking, but you can choose not to do so.

Pursuant to HRS § 92-3, all interested persons shall be afforded an opportunity to present oral testimony or submit data, views, or arguments, in writing on any agenda item. Public Testimony for items listed on the agenda is strongly recommended to be limited to three minutes per agenda item. We ask that you identify yourself and any affiliation before speaking, but you can choose not to do so.

The HIBC may go into Executive Session pursuant to HRS § 92-5(a)(4), to consult with its attorney on questions and issues pertaining to the Board's powers, duties, privileges, immunities, and liabilities.

Pursuant to HRS § 6E-43.5(e), the council may hold a closed meeting if the location and description of a burial site are under consideration.

Pursuant to §92-2.5(d) HRS, if a meeting must be cancelled due to lack of quorum, the present council members may elect to continue to receive testimony and presentations on items on the agenda.

It is strongly recommended that any member of the public who requests an item to be placed on a burial council meeting agenda must make this request with the Burial Sites Program staff at least two weeks preceding the scheduled meeting date. This request shall be accompanied by all related

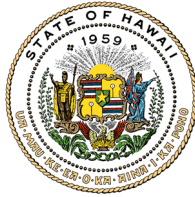
documents. Failure to comply with this procedure may delay the item to the following month's agenda.

Materials related to items on the agenda are available for review at the State Historic Preservation Division located at 40 Po'okela St., Hilo, HI 96720.

If you need an auxiliary aid/service or other accommodation due to a disability, please contact (808) 829-9322 or traven.apiki@hawaii.gov as soon as possible. Requests made as early as possible have a greater likelihood of being fulfilled. Upon request, this agenda and other materials are available in alternate/accessible formats.

JOSH GREEN, M.D.
GOVERNOR | KE KIA'ĀINA

SYLVIA LUKE
LIEUTENANT GOVERNOR | KA HOPE KIA'ĀINA



**STATE OF HAWAII | KA MOKU'ĀINA 'O HAWAI'I
DEPARTMENT OF LAND AND NATURAL RESOURCES
KA 'OIHANA KUMUWAIWAI 'ĀINA**

STATE HISTORIC PRESERVATION DIVISION
KAKUHIHEWA BUILDING
601 KAMOKILA BLVD, STE 555
KAPOLEI, HAWAII 96707

DAWN N.S. CHANG
CHAIRPERSON
BOARD OF LAND AND NATURAL RESOURCES
COMMISSION ON WATER RESOURCE MANAGEMENT

RYAN K.P. KANAKA'OLE
FIRST DEPUTY

CIARA W.K. KAHAHANE
DEPUTY DIRECTOR - WATER

AQUATIC RESOURCES
BOATING AND OCEAN RECREATION
BUREAU OF CONVEYANCES
COMMISSION ON WATER RESOURCE MANAGEMENT
CONSERVATION AND COASTAL LANDS
CONSERVATION AND RESOURCES ENFORCEMENT
ENGINEERING
FORESTRY AND WILDLIFE
HISTORIC PRESERVATION
KAHOOLAWE ISLAND RESERVE COMMISSION
LAND
STATE PARKS

**AGENDA
HAWAI'I ISLAND BURIAL COUNCIL MEETING**

DATE: Thursday, September 18, 2025
TIME: 9:30 AM – 1:30 PM
PLACE: Online via Zoom

—AND—

**Division of Boating and Ocean Recreation
Conference Room
74-380 Kealahou Parkway
Kailua-Kona, HI 96740**

This meeting will be held using interactive conference technology (ICT) under section 92-3.7, Haw. Rev. Stat. (HRS). Board members, staff, applicants, testifiers, and the public can choose to participate in person, online via ICT, or by telephone at +1 669 444 9171.

To Attend/Provide Testimony via ICT:

<https://zoom.us/j/99297409273>

**Meeting ID: 992 9740 9273
Passcode: 4q9dju**

Board Packets Available Online at:
<https://dlnr.hawaii.gov/shpd/about/branches/ibc/meetings/>

***** Recording Available at <https://dlnr.hawaii.gov/shpd/about/branches/ibc/meetings/> *****

HIBC Members:

Present:

Chair Crivello (LLO), *Zoom*
Vice-Chair Kahakalau (Hamakua), *Zoom*
Member Desmon Haumea (Ka'ū), *Zoom*
Member Abenes (Kohala), *In-person*
Member Pōki'i Seto (Hilo), *Zoom*

SHPD Staff:

Traven Apiki, Hawaii Burial Site Specialist
Noah Gomes, Cultural Ethnographer
Regina Hilo, Oahu Burial Sites Specialist

Guests:

Jimmy Medeiros
Kaulana Eli
Kale Gumapac
Lynette Akana
Terina Faagau
Lanell Lua
Paka Harp
Angela Neller
Makanui
Waiau Ohana
Ihilani
Kaweni Ibarra (OHA)

I. CALL TO ORDER

Chair Crivello calls meeting to order at 10:07 AM

II. ROLL CALL/PULE

Member Haumea conducts pule

Desmon Haumea, I'ini Kahakalau, Leimana Albenes, Pōki 'i Seto, La Crivello

III. MINUTES

A. Approval of the Minutes for August 21, 2025.

- Chair Crivello-There are typos with names that need to be fixed.

MOTION: To Accept August Minutes with Minor Edits

MOVED BY: Member Haumea

2ND BY: Vice-Chair Kahakalau

VOTE: Motion carried unanimously

IV. BUSINESS

A. Lineal Descendancy Recognition Application of Lynette Denise Akana to Akana Family Burials SIHP#50-10-02-31541, Located at Halawa Ahupua'a, North Kohala District, Island of Hawai'i, TMK (3) 5-3-008:001.

Information/Discussion/Determination: Discussion and determination whether to recognize the applicant as a cultural descendant to the above Native Hawaiian skeletal remains.

The Council may elect to go into executive session pursuant to HAR §13-300-25(d). The Council may close a meeting whenever location or description of a Native Hawaiian Burial site is under consideration. The chairperson, by concurrence of a majority of members present at the meeting, shall be authorized to require the public to leave the meeting while the confidential

matter is being discussed and reopen the meeting once the confidential matter is no longer being considered.

Recording: 0:00-0:55

- Chair Crivello-Gives opportunity for testimony from descendant before council votes for recognition.
- Lynette Akana-Open to answer any questions the council may have.
- Member Haumea-Familiar with this project and ohana, glad to see them on the agenda for descendancy.

MOTION: To Recognize Listed Applicant as a Lineal Descendant

MOVED BY: Member Haumea

2ND BY: Member Abenes

VOTE: Motion carried unanimously

Recording Begins at 10:15AM

- Lynette Akana (0:00-0:55)

B. Descendancy Recognition Application of Kale Gumapac to Unidentified Native Hawaiian Skeletal Remains, SIHP #50-10-45-31430, Located in Hawaiian Paradise Park, Maku‘u Ahupua‘a, Puna District, Island of Hawaii, TMK: (3) 1-5-023:040.

Information/Discussion/Determination: Discussion and determination whether to recognize the applicant as a cultural descendant to the above Native Hawaiian skeletal remains.

The Council may elect to go into executive session pursuant to HAR §13-300-25(d). The Council may close a meeting whenever location or description of a Native Hawaiian Burial site is under consideration. The chairperson, by concurrence of a majority of members present at the meeting, shall be authorized to require the public to leave the meeting while the confidential matter is being discussed and reopen the meeting once the confidential matter is no longer being considered.

Recording: 0:55-5:28

- Kale Gumapac (2:14)
- Chair Crivello (3:50)

Vote and Motion made at 4:46

- No Discussion

MOTION: To Recognize Listed Applicant as a Cultural Descendant

MOVED BY: Member Haumea

2ND BY: Vice-Chair Kahakalau

VOTE: Motion carried unanimously

C. DRAFT Burial Treatment Plan for SIHP #50-10-47-31480, Kalama 5 Ahupua‘a, South Kona District, Island of Hawai‘i, TMK: (3) 8-2-006:001.

Information/Discussion/Determination/Recommendation: Discussion and determination on whether to preserve in place or relocate human skeletal remains at the above location.

Recommendation to the State Historic Preservation Division whether to accept or not accept the above DRAFT Burial Treatment Plan.

Recording: 5:28-29:45 & 57:32-59:05

- Chair Crivello (5:28)

Vote and Motion made at 7:04

MOTION: To Preserve in Place

MOVED BY: Member Haumea

2ND BY: Vice-Chair Kahakalau

VOTE: Motion carried unanimously

- Chair Crivello (7:44)
- Kaulana Eli (8:40)
- Chair Crivello (10:25)
- Member Haumea (12:30)
- Kaulana Eli (12:40)
- Member Haumea (13:00)
- Chair Crivello (14:20)
- Kaulana Eli (15:26)
- Member Haumea (19:07)
- Chair Crivello (20:26)

Vote and Motion made at 29:05

- No Discussion

MOTION: To Recommend Approval of the BTP

MOVED BY: Member Haumea

2ND BY: Vice-Chair Kahakalau

VOTE: Motion carried unanimously

Agenda Moves to IV. D.

Vote and Motion made at 58:44

- No Discussion

MOTION: To Deem BTP as Sensitive

MOVED BY: Member Haumea

2ND BY: Vice-Chair Kahakalau

VOTE: Motion carried unanimously

Agenda Moves to V. A.

- D. DRAFT Burial Treatment Plan for SIHP #50-10-45-31430 in Hawaiian Paradise Park, Waikahekahe Iki Ahupua‘a, Puna District, Island of Hawai‘i, TMK: (3) 1-5-023:040.**
Information/Discussion: Information and discussion on the above DRAFT Burial Treatment Plan.

Recording: 29:45-57:14

- Kale Gumapac (30:34)
- Terina Faagau (38:02)
- Chair Crivello (39:46)
- Kale Gumapac (41:41)
- Chair Crivello (42:53)
- Member Haumea (43:02)
- Vice-Chair Kahakalau (45:21)
- Terina Faagau (47:12)
- Member Haumea (48:56)
- Terina Faagau (49:23)
- Member Haumea (50:20)
- Terina Faagau (50:50)
- Member Haumea (51:15)
- Chair Crivello (52:03)
- Terina Faagau (56:00)
- Chair Crivello (56:35)

Agenda Moves Back to IV. C.

V. INADVERTENTS/COMMUNICATIONS

- A. Inadvertent Discovery of Unidentified Human Skeletal Remains on February 7, 2025 and May 7, 2025, Honokohau Ahupua‘a, North Kona District, Island of Hawai‘i, TMK: (3) 7-4-008-010.**
Information/Discussion: Information and discussion on the above item.

Recording: 59:05-1:09:25 & 1:14:10-1:28:40

- Traven Apiki (1:00:05)
- Chair Crivello (1:02:56)
- Traven Apiki (1:04:29)
- Chair Crivello (1:05:10)
- Paka Harp (1:06:10)
- Chair Crivello (1:08:58)

Agenda Moves to Item V. B.

- Chair Crivello (1:14:10)
- Jimmy Medeiros (1:14:40)
- Chair Crivello (1:24:15)

Agenda Moves to Item VII.

- B. Inadvertent Discovery of Unidentified Human Skeletal Remains on August 16th 2025, Exposed by Erosion on the Shoreline of Old Airport Beach, Lanihau Ahupua‘a, District of North Kona, Island of Hawai‘i, TMK: (3) 7- 5-005-007.**

Information/Discussion: Information and discussion on the above item.

Recording: 1:09:25-1:12:40

- Traven Apiki (1:09:55)

- C. Letter from G70, dated September 4, 2025, Regarding the Publication of the Final EIS for the Keauhou Bay Management Plan, Keauhou Ahupua‘a, North Kona District, Island of Hawai‘i, TMK: (3) 7-8-008-010:044&049, (3) 7-8-012 (Multiple).**

Information/Discussion: Information and discussion on the above item.

Recording: 1:12:40-1:13:30

- Chair Crivello (1:12:40)

VI. ANNOUNCEMENTS

- A. The Next HIBC Meeting is scheduled for Thursday, October 16 , 2025, 9:30 A.M., TBD.**

Recording: 1:13:30-1:13:58

- Chair Crivello (1:13:30)

Agenda Moves to Item V. A.

VII. ADJOURNMENT

Meeting Adjourns at 11:44AM

To Provide Written Testimony:

We encourage interested persons to submit written testimony in advance of the meeting, which will be distributed to Board members prior to the meeting and allow a timely review. Please submit written testimony via email to: traven.apiki@hawaii.gov. Written testimonies can also be mailed to: 40 Po‘okela Street, Hilo, HI 96720. Written testimonies may be posted upon the HIBC meeting website; as a precaution, please be mindful with any personal information prior to submitting unless you intend it to be shared. Late written testimony will be retained as part of the record and distributed to HIBC members as soon as practicable, but we cannot ensure the HIBC will receive it in sufficient time to review, prior to decision-making.

To Provide In-Person Oral Testimony:

Attend in-person at: 19 E. Kāwili Street, Hilo HI 96720.

To Provide Testimony by Telephone:

On the day of the meeting at the start of the agenda item you wish to testify on, dial +1 669 444 9171 and follow the prompts.

To Provide Video/Zoom Testimony:

Please send your request in a timely manner to: traven.apiki@hawaii.gov with your information, email address, and the agenda item you wish to testify on. Once your request has been received, you will receive a confirmation email with pertinent information. You may testify without signing up in advance.

We kindly ask that all oral/video testimony be limited to not more than three (3) minutes. We ask that you identify yourself and any affiliation before speaking, but you can choose not to do so.

Pursuant to §92-3 Hawai'i Revised Statutes (HRS), all interested persons shall be afforded an opportunity to present oral testimony or submit data, views, or arguments, in writing on any agenda item. Additionally, pursuant to a policy adopted by the Hawai'i Island Burial Council at its November 17, 2005 meeting, oral testimony for items listed on the agenda is limited to three minutes per person, per agenda item.

The HIBC may go into Executive Session pursuant to section 92-5(a)(4), HRS, in order to consult with its attorney on questions and issues pertaining to the Board's powers, duties, privileges, immunities, and liabilities.

Pursuant to §92-4, §92-5(a)(8), and §6E-43.5 HRS, and upon compliance with the procedures set forth in §92-4, HRS, the council may go into a closed meeting to consider information that involves the location or description of a burial site.

Pursuant to §92-2.5(d) HRS, if a meeting must be cancelled due to lack of quorum, the present council members may elect to continue to receive testimony and presentations on items on the agenda.

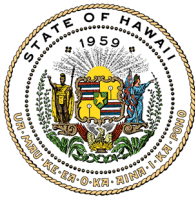
A request to be placed on a burial council meeting agenda must be made with the Burial Sites Program staff at least two weeks preceding the scheduled meeting date. In addition, the request must be accompanied by all related documents. Failure to comply with this procedure will delay the item to the following month's agenda.

Materials related to items on the agenda are available for review at the State Historic Preservation Division located at 40 Po'okela St., Hilo, HI 96720.

If you need an auxiliary aid/service or other accommodation due to a disability, please contact (808) 829-9322 or traven.apiki@hawaii.gov as soon as possible. Requests made as early as possible have a greater likelihood of being fulfilled. Upon request, this agenda and other materials are available in alternate/accessible formats.

JOSH GREEN, M.D.
GOVERNOR | KE KIA'ĀINA

SYLVIA LUKE
LIEUTENANT GOVERNOR | KA HOPE KIA'ĀINA



**STATE OF HAWAII | KA MOKU'ĀINA 'O HAWAI'I
DEPARTMENT OF LAND AND NATURAL RESOURCES
KA 'OIHANA KUMUWAIWAI 'ĀINA**

STATE HISTORIC PRESERVATION DIVISION
KAKUHIHEWA BUILDING
601 KAMOKILA BLVD, STE 555
KAPOLEI, HAWAII 96707

DAWN N.S. CHANG
CHAIRPERSON
BOARD OF LAND AND NATURAL RESOURCES
COMMISSION ON WATER RESOURCE MANAGEMENT

RYAN K.P. KANAKA'OLE
FIRST DEPUTY

CIARA W.K. KAHANE
DEPUTY DIRECTOR - WATER

AQUATIC RESOURCES
BOATING AND OCEAN RECREATION
BUREAU OF CONVEYANCES
COMMISSION ON WATER RESOURCE MANAGEMENT
CONSERVATION AND COASTAL LANDS
CONSERVATION AND RESOURCES ENFORCEMENT
ENGINEERING
FORESTRY AND WILDLIFE
HISTORIC PRESERVATION
KAHOOLAWE ISLAND RESERVE COMMISSION
LAND
STATE PARKS

**AGENDA
HAWAI'I ISLAND BURIAL COUNCIL MEETING**

DATE: Thursday, November 20, 2025
TIME: 10:00 AM – 1:30 PM
PLACE: Online via Zoom
—AND—
Division of Forestry and Wildlife
Conference Room
19 E. Kāwili Street
Hilo, HI 96720

This meeting will be held using interactive conference technology (ICT) under section 92-3.7, Hawaii Revised Statutes (HRS). Board members, staff, applicants, testifiers, and the public can choose to participate in person, online via ICT, or by telephone at +1 669 444 9171.

To Attend/Provide Testimony via ICT:

<https://zoom.us/j/92473523781>

Meeting ID: 924 7352 3781
Passcode: 2pMqxP

Board Packets Available Online at:

<https://dlnr.hawaii.gov/shpd/about/branches/ibc/meetings/>

*** Recording Available at <https://dlnr.hawaii.gov/shpd/about/branches/ibc/meetings/> ***

HIBC Members:

Present:

Chair Crivello (LLO), *Zoom*
Member Desmon Haumea (Ka'ū), *Zoom*
Member Abenes (Kohala), *In-person*
Member Pōki'i Seto (Hilo), *Zoom*

SHPD Staff:

Traven Apiki, Hawaii Burial Site Specialist
Noah Gomes, Cultural Ethnographer

Guests:

Tracy Tam Sing
Jojo Tanimoto
Melissa Agbayani

Lihiwai Maluo
Renee
Manu Powers
Lanell Lua
Mara Mulrooney
Kimberly Crawford
Matt Clark
Anekelea Hubner
Kaweni Ibarra (OHA)
Kekua Norman
Angela Neller
Paka Harp
Lehua Waianuhe
Jimmy Medieros
Keala Norman
Christopher Salinas
Clifford

I. CALL TO ORDER

Chair Crivello calls meeting to order at 10:17 AM

II. ROLL CALL/PULE

Member Haumea conducts pule

Desmon Haumea, Leimana Albenes, Pōki'i Seto, La Crivello

III. MINUTES

A. Approval of the Minutes for September 18, 2025.

Recording: 4:55-5:50,

Motion and vote made at 7:04

MOTION: To Accept the September 18, 2025 Minutes

MOVED BY: Member Haumea

2ND BY:

VOTE: Motion carried unanimously

Discussion Moves to Item IV. A

IV. NEW BUSINESS

A. Discussion and Approval of the Department's Recommendation to Recognize the Applicant, Isaac D. Harp Jr., as a Cultural Descendant to Unidentified Native Hawaiian Skeletal Remains, SIHP # 50-10-27-31545 Located at Honokohau Ahupua'a, North Kona District, Island of Hawai'i, TMK: (3) 7-4-008-010.

The Council may elect to go into executive session pursuant to HRS § 6E-43.5(e). The Council may close a meeting whenever location or description of a Native Hawaiian Burial site is under consideration. The chairperson, by concurrence of a majority of members present at the meeting, shall be authorized to require the public to leave the meeting while the confidential matter is being discussed and reopen the meeting once the confidential matter is no longer being considered.

Recording: 10:50-17:11, 29:00-33:19

- Chair Crivello (10:50)
- Member Haumea (11:44)
- Chair Crivello (11:48)
- Paka Harp (13:18)
- Chair Crivello (15:07)
- Paka Harp (16:45)

Discussion Moves to Item IV. F

- Chair Crivello (29:40)

Vote and Motion made at 30:04

MOTION: To Recognize Listed Applicant in Item A, B, C, D, and E as a Cultural Descendants

MOVED BY: Member Haumea

2ND BY: Member Abenes

VOTE: Motion carried unanimously

Discussion Moves to Item IV. I

B. Discussion and Approval of the Department's Recommendation to Recognize the Applicant, Cherish L. Harp, as a Cultural Descendant to Unidentified Native Hawaiian Skeletal Remains, SIHP # 50-10-27-31545 Located at Honokohau Ahupua'a, North Kona District, Island of Hawai'i, TMK: (3) 7-4-008-010.

The Council may elect to go into executive session pursuant to HRS § 6E-43.5(e). The Council may close a meeting whenever location or description of a Native Hawaiian Burial site is under consideration. The chairperson, by concurrence of a majority of members present at the meeting, shall be authorized to require the public to leave the meeting while the confidential matter is being discussed and reopen the meeting once the confidential matter is no longer being considered.

C. Discussion and Approval of the Department's Recommendation to Recognize the Applicant, Merriette K. Harp, as a Cultural Descendant to Unidentified Native Hawaiian Skeletal Remains, SIHP # 50-10-27-31545 Located at Honokohau Ahupua'a, North Kona District, Island of Hawai'i, TMK: (3) 7-4-008-010.

The Council may elect to go into executive session pursuant to HRS § 6E-43.5(e). The Council may close a meeting whenever location or description of a Native Hawaiian Burial site is under consideration. The chairperson, by concurrence of a majority of members present at the meeting, shall be authorized to require the public to leave the meeting while the confidential

matter is being discussed and reopen the meeting once the confidential matter is no longer being considered.

D. Discussion and Approval of the Department's Recommendation to Recognize the Applicant, Jacob G. Harp, as a Cultural Descendant to Unidentified Native Hawaiian Skeletal Remains, SIHP # 50-10-27-31545 Located at Honokohau Ahupua'a, North Kona District, Island of Hawai'i, TMK: (3) 7-4-008-010.

The Council may elect to go into executive session pursuant to HRS § 6E-43.5(e). The Council may close a meeting whenever location or description of a Native Hawaiian Burial site is under consideration. The chairperson, by concurrence of a majority of members present at the meeting, shall be authorized to require the public to leave the meeting while the confidential matter is being discussed and reopen the meeting once the confidential matter is no longer being considered.

E. Discussion and Approval of the Department's Recommendation to Recognize the Applicant, Donald R. Harp, as a Cultural Descendant to Unidentified Native Hawaiian Skeletal Remains, SIHP # 50-10-27-31545 Located at Honokohau Ahupua'a, North Kona District, Island of Hawai'i, TMK: (3) 7-4-008-010.

The Council may elect to go into executive session pursuant to HRS § 6E-43.5(e). The Council may close a meeting whenever location or description of a Native Hawaiian Burial site is under consideration. The chairperson, by concurrence of a majority of members present at the meeting, shall be authorized to require the public to leave the meeting while the confidential matter is being discussed and reopen the meeting once the confidential matter is no longer being considered.

F. Discussion and Approval of the Department's Recommendation to Recognize the Applicant, Carolyn Keala Norman, as a Cultural Descendant to Native Hawaiian Skeletal Remains Located within Lālāmilo Ahupua'a, South Kohala District, Island of Hawai'i.

The Council may elect to go into executive session pursuant to HRS § 6E-43.5(e). The Council may close a meeting whenever location or description of a Native Hawaiian Burial site is under consideration. The chairperson, by concurrence of a majority of members present at the meeting, shall be authorized to require the public to leave the meeting while the confidential matter is being discussed and reopen the meeting once the confidential matter is no longer being considered.

Recording: 17:11-22:55, 27:25-29:00

- Keala Norman (18:05)
- Chair Crivello (20:35)
- Keala Norman (22:06)

Discussion Moves to Item IV. H

Vote and Motion made at 27:59

- No Discussion

MOTION: To Accept Items F & G [Recognize Listed Applicant as a Cultural Descendant to iwi kupuna in Lālāmilo and Kealakekua]

MOVED BY: Member Haumea

2ND BY: Member Seto

VOTE: Motion carried unanimously

Discussion Moves to Item IV. A

G. Discussion and Approval of the Department's Recommendation to Recognize the Applicant, Carolyn Keala Norman, as a Cultural Descendant to Native Hawaiian Skeletal Remains Located within Kealakekua Ahupua'a, South Kona District, Island of Hawai'i.

The Council may elect to go into executive session pursuant to HRS § 6E-43.5(e). The Council may close a meeting whenever location or description of a Native Hawaiian Burial site is under consideration. The chairperson, by concurrence of a majority of members present at the meeting, shall be authorized to require the public to leave the meeting while the confidential matter is being discussed and reopen the meeting once the confidential matter is no longer being considered.

H. Discussion and Approval of the Department's Recommendation to Recognize the Applicant, Christopher Salinas Jr., as a Lineal Descendant to Native Hawaiian Skeletal Remains Interred in the Macomber Family Graves, Located at Kioloka'a/Pu'umaka'a Ahupua'a, Ka'u District, Island of Hawai'i, TMK (3) 9-4-016:013.

The Council may elect to go into executive session pursuant to HRS § 6E-43.5(e). The Council may close a meeting whenever location or description of a Native Hawaiian Burial site is under consideration. The chairperson, by concurrence of a majority of members present at the meeting, shall be authorized to require the public to leave the meeting while the confidential matter is being discussed and reopen the meeting once the confidential matter is no longer being considered.

Recording: 22:55-27:25

- Chair Crivello (22:55)
- Christopher Salinas (23:52)
- Chair Crivello (24:49)

Member Freeman joins

- Member Freeman (25:05)
- Chair Crivello (25:25)

Vote and Motion made at 26:03

- No Discussion

MOTION: To Recognize Listed Applicant as a Cultural Descendant

MOVED BY: Member Haumea

2ND BY: Member Seto

VOTE: Motion carried unanimously

- Member Haumea (26:46)
- Chair Crivello (26:52)

Discussion Moves to Item IV. F

- I. Discussion Regarding Proposed Testing Strategy for an Archaeological Inventory Survey and Request for Concurrence for the Hawaiian Islands Fiber Link Project, with Cable Landing Sites at University of Hawai‘i at Hilo Pacific Aquaculture & Coastal Resources Center and UH Hilo, Waiakea Ahupua‘a, Hilo District, Island of Hawai‘i, TMK(s) (3) 2-1-009:001 and 041 (por.), (3) 2-1-011:004, 005, and 010 (por.), (3) 2-4-001:167 (por.).**

Recording: 33:19-54:45

- Mara Mulrooney (35:49)
- Clifford (39:30)
- Mara Mulrooney (44:30)
- Member Haumea (54:05)
- Chair Crivello (54:25)
-

- J. HIBC election of a member to serve on the House Resolution 186/Senate Resolution 130 Office of Hawaiian Affairs Working Group.**

Nomination/Election: Nomination and election of an Hawai‘i Island Burial Council member to provide representation on the Working Group.

Recording: 54:45-59:56

- Chair Crivello (54:45)
- Member Haumea (57:36)
- Member Freeman (58:20)

Vote and Motion made at 59:01

- No Discussion

MOTION: To Nominate Member Kahakalau as the HIBC Representative

MOVED BY: Member Haumea

2ND BY: Member Freeman

VOTE: Motion carried unanimously

V. INADVERTENTS/COMMUNICATIONS

- A. Discussion Regarding Inadvertent Discoveries of Unidentified Native Hawaiian Skeletal Remains at Hulihe‘e Palace, Keopu Ahupua‘a, North Kona District, Island of Hawai‘i, TMK: (3) 7-5-007-020.**

Recording: 59:56-1:28:17

- Tracy Tam-Sing (1:01:18)
- Chair Crivello (1:20:27)
- Member Abenes (1:22:51)
- Chair Crivello (1:23:20)

- Tracy Tam-Sing (1:24:12)
- Chair Crivello (1:24:20)
- Member Abenes (1:24:49)
- Traven Apiki (1:25:18)
- Chair Crivello (1:26:00)
- Traven Apiki (1:26:47)
- Chair Crivello (1:27:20)

B. Discussion Regarding Letter from Staten Island Museum, dated August 13, 2025, Regarding NAGPRA Section 6 Summary Submission and Invitation to Consult on Tapa Cloth and Skirt Attributed to Hawai‘i.

Recording: 1:28:17-1:33:34

- Chair Crivello (1:28:17)

C. Discussion Regarding Letter from Department of the Navy, dated September 17, 2025, Regarding Notice of Availability of the Final EIS for Hawaii-California Training and Testing.

Recording: 1:33:34-1:38:33

- Chair Crivello (1:33:34)
- Traven Apiki (1:34:30)
- Chair Crivello (1:35:40)

D. Discussion Regarding Letter from Pacific Legacy, dated September 22, 2025, Regarding Initiation of Section 106 Consultation for the Proposed Hawaiian Island Fiber Link Project, with Cable Landing Sites at the Pacific Aquaculture & Coastal Resource Center and UH Hilo, Waiakea Ahupua‘a, South Hilo District, Island of Hawai‘i, TMK(s): (3) 2-1-009:001 (por.), (3) 2-1-009:041 (por.), (3) 2-1-011:004 (por.), (3) 2-1-011:005 (por.), (3) 2-1-011:010 (por.), (3) 2-4-001:167 (por.).

Recording: 1:38:33-1:39:08

- Chair Crivello (1:38:33)

E. Discussion Regarding Updates to the State Historic Preservation Division’s Revised Descendancy Claim and the State Historic Preservation Division’s Application Process for Cultural Descendants.

Recording: 1:39:08-1:45:12

- Traven Apiki (1:39:25)
- Chair Crivello (1:41:35)
-

F. Discussion Regarding Letter from Department of Transportation, dated October 23, 2025, Regarding Section 106 Consultation on the Keaau-Pahoa Road Intersection

Improvements at Makuu Drive and Orchidland Drive Keaau and Waikahekahe Ahupuaa, Puna District, Island of Hawai‘i, TMK(s): (3) 1-5-015:180, 188, and 999 (Portions), (3) 1-5-016:161 and 999 (Portions), (3) 1-5-033:249, 250, 251, and 999 (Portions), (3) 1-6-005:165 (Portion), (3) 1-6-009:244 (Portion), (3) 1-6-009:245, 246, and 388 (Portions), and (3) 1-6-010:137 (Portion).

Recording: 1:45:12-1:52:30

- Chair Crivello (1:45:12)
- Traven Apiki (1:53:12)

VI. ANNOUNCEMENTS

A. The Next HIBC Meeting is scheduled for Monday, December 8, 2025, 9:00 A.M., TBD.

Recording: 1:52:30-2:08:15

- Chair Crivello (1:52:30)
- Traven Apiki (1:53:12)
- Chair Crivello (1:54:00)
- Member Haumea (1:57:52)
- Chair Crivello (1:58:00)
- Member Abenes (1:59:10)
- Chair Crivello (1:59:30)
- Member Haumea (2:00:40)
- Chair Crivello (2:01:57)

VII. ADJOURNMENT

MOTION: To Adjourn

MOVED BY: Member Haumea

2ND BY: Member Abenes

VOTE: Motion carried unanimously

Meeting Adjourns 12:25PM

To Provide Written Testimony:

We encourage interested persons to submit written testimony in advance of the meeting, which will be distributed to Board members prior to the meeting and allow a timely review. Please submit written testimony via email to: traven.apiki@hawaii.gov. Written testimonies can also be mailed to: 40 Po‘okela Street, Hilo, HI 96720. Written testimonies may be posted upon the HIBC meeting website; as a precaution, please be mindful with any personal information prior to submitting unless you intend it to be shared. Late written testimony will be retained as part of the record and distributed to HIBC members as soon as practicable, but we cannot ensure the HIBC will receive it in sufficient time to review, prior to decision-making.

To Provide In-Person Oral Testimony:

Attend in-person at: 19 E. Kāwili Street, Hilo HI 96720.

To Provide Testimony by Telephone:

On the day of the meeting at the start of the agenda item you wish to testify on, dial +1 253-205-0468 and follow the prompts.

To Provide Video/Zoom Testimony:

Please send your request in a timely manner to: traven.apiki@hawaii.gov with your information, email address, and the agenda item you wish to testify on. Once your request has been received, you will receive a confirmation email with pertinent information. You may testify without signing up in advance.

We kindly ask that all oral/video testimony be limited to not more than three (3) minutes. We ask that you identify yourself and any affiliation before speaking, but you can choose not to do so.

Pursuant to HRS § 92-3, all interested persons shall be afforded an opportunity to present oral testimony or submit data, views, or arguments, in writing on any agenda item. Public Testimony for items listed on the agenda is strongly recommended to be limited to three minutes per agenda item. We ask that you identify yourself and any affiliation before speaking, but you can choose not to do so.

The HIBC may go into Executive Session pursuant to HRS § 92-5(a)(4), to consult with its attorney on questions and issues pertaining to the Board's powers, duties, privileges, immunities, and liabilities.

Pursuant to HRS § 6E-43.5(e), the council may hold a closed meeting if the location and description of a burial site are under consideration.

Pursuant to §92-2.5(d) HRS, if a meeting must be cancelled due to lack of quorum, the present council members may elect to continue to receive testimony and presentations on items on the agenda.

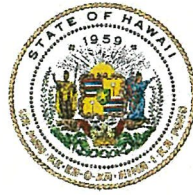
It is strongly recommended that any member of the public who requests an item to be placed on a burial council meeting agenda must make this request with the Burial Sites Program staff at least two weeks preceding the scheduled meeting date. This request shall be accompanied by all related documents. Failure to comply with this procedure may delay the item to the following month's agenda.

Materials related to items on the agenda are available for review at the State Historic Preservation Division located at 40 Po'okela St., Hilo, HI 96720.

If you need an auxiliary aid/service or other accommodation due to a disability, please contact (808) 829-9322 or traven.apiki@hawaii.gov as soon as possible. Requests made as early as possible have a greater likelihood of being fulfilled. Upon request, this agenda and other materials are available in alternate/accessible formats.

JOSH GREEN, M.D.
GOVERNOR | KE KIA'ĀINA

SYLVIA LUKE
LIEUTENANT GOVERNOR | KA HOPE KIA'ĀINA



STATE OF HAWAII | KA MOKU'ĀINA 'O HAWAII
DEPARTMENT OF LAND AND NATURAL RESOURCES
KA 'OIHANA KUMUWAIWAI 'ĀINA

STATE HISTORIC PRESERVATION DIVISION
KAKUHIHEWA BUILDING
601 KAMOKILA BLVD, STE 555
KAPOLEI, HAWAII 96707

DAWN N.S. CHANG
CHAIRPERSON
BOARD OF LAND AND NATURAL RESOURCES
COMMISSION ON WATER RESOURCE
MANAGEMENT

RYAN K.P. KANAKA'OLE
FIRST DEPUTY

DEAN D. UYENO
ACTING DEPUTY DIRECTOR - WATER

AQUATIC RESOURCES
BOATING AND OCEAN RECREATION
BUREAU OF CONVEYANCES
COMMISSION ON WATER RESOURCE
MANAGEMENT
CONSERVATION AND COASTAL LANDS
CONSERVATION AND RESOURCES
ENFORCEMENT
ENGINEERING
FORESTRY AND WILDLIFE
HISTORIC PRESERVATION
KAHOOLAWE ISLAND RESERVE COMMISSION
LAND
STATE PARKS

November 28, 2025

PROJECT NO: 2025PR00784
DOC NO: 2511TA19

TO: Hawai'i Island Burial Council Members

FROM: Jessica Puff, State Historic Preservation Administrator

A handwritten signature in black ink, appearing to be "JP" or "JPuff", is written over the printed name of Jessica Puff.

SUBJECT: **Descendancy Recognition Application of Kalena K. Blakemore to Unidentified Native Hawaiian Skeletal Remains, SIHP # 50-10-02-31544 Located at Honopueo Ahupua'a, Kohala District, Island of Hawai'i, TMK (3) 5-4-009:020.**

For the purpose of establishing and substantiating a cultural descendant claim to human skeletal remains, located within the above ahupua'a, the named individual, below, has submitted an application to the Department of Land and Natural Resources, State Historic Preservation Division (SHPD) for assessment and verification pursuant to Hawai'i Administrative Rules (HAR) §13-300-35.

The Administrative Rules require that the applicant provide evidence of genealogical connections to a Native Hawaiian ancestor who once resided and/or is buried in the same ahupua'a where Native Hawaiian skeletal remains are located or originated from. In this case, the applicant has previously submitted information genealogically connecting herself to Walter Keawe Kaleikini Sr., an ancestor who once resided and/or is buried in the ahupua'a of Honopueo.

Therefore, the SHPD recommends that the HIBC recognize **Kalena K. Blakemore** as a **cultural descendant** to the above iwi kupuna as well as all additional iwi kupuna within the ahupua'a of Honopueo since she satisfied the HAR requirement of demonstrating a genealogical connection to ancestors within the ahupua'a in which iwi kupuna are located or originated from and thus, has met the cultural descendant criteria for all additional iwi kupuna within the same geographic and cultural context to which her original recognition applied.

Should you have any additional questions or concerns, please contact our Hawai'i Island Burial Sites Specialist, Traven Apiki at traven.apiki@hawaii.gov.

JOSH GREEN, M.D.
GOVERNOR
KE KIA'ĀINA



STATE OF HAWAII | KA MOKU'ĀINA 'O HAWAII
DEPARTMENT OF TRANSPORTATION | KA 'OIHANA ALAKAU
869 PUNCHBOWL STREET
HONOLULU, HAWAII 96813-5097

EDWIN H. SNIFFEN
DIRECTOR
KA LUNA HO'OKELE

Deputy Directors
Nā Hope Luna Ho'okele
DREANALEE K. KALILI
TAMMY L. LEE
CURT T. OTAGURO
ROBIN K. SHISHIDO

IN REPLY REFER TO:

HWY-IE 25-2.0375

November 28, 2025

VIA EMAIL: traven.apiki@hawaii.gov

TO: OAHU ISLAND & HAWAII ISLAND BURIAL COUNCILS
HISTORIC PRESERVATION DISTRICT
DEPARTMENT OF LAND AND NATURAL RESOURCES

ATTENTION: TRAVEN APIKI, BURIAL SITES SPECIALIST

FROM: LAWRENCE DILL 
HIGHWAYS ADMINISTRATOR

SUBJECT: NATIONAL HISTORIC PRESERVATION ACT (NHPA), SECTION 106
CONSULTATION WITH NATIVE HAWAIIAN ORGANIZATIONS (NHO)
AND POTENTIAL CONSULTING PARTIES
CELLULAR VEHICLE-TO-EVERYTHING (V2X) SYSTEM
VARIOUS AHUPUAA, VARIOUS DISTRICTS
ISLANDS OF OAHU, HAWAII, MAUI, AND KAUAI
FEDERAL-AID PROJECT NO. ATC-1500(119)
VARIOUS TAX MAP KEYS

On behalf of the Federal Highway Administration (FHWA), the Hawaii Department of Transportation (HDOT) is hereby notifying you that on July 15, 2025, consultation under Section 106 of the NHPA of 1966 (amended, 2006) was initiated with the Department of Land and Natural Resources State Historic Preservation Officer (SHPO) for the subject Cellular V2X System project.

The proposed federally funded HDOT project is considered a federal action and undertaking as defined in 36 *Code of Federal Regulations (CFR)*, Section 800.16(y). Effective May 1, 2016, FHWA has issued a Programmatic Delegation of Authority allowing the HDOT and local public agencies to conduct NHPA Section 106 consultations with the SHPO, NHO, and other consulting parties per 36 *CFR*, Section 800.2(c)(4). The FHWA will remain responsible for all findings and determinations charged to the agency during the Section 106 process.

Overview of the Undertaking

The proposed project involves the installation of V2X roadside units and communication equipment at various signalized intersections on the islands of Oahu, Hawaii, Maui, and Kauai. These installations will occur on existing signal poles and within the existing traffic signal cabinets. There will be no trenching, coring, or other ground disturbance.

The various United States Geological Survey maps, adjacent TMK parcels, and typical installation detail can be found at: <https://hidot.hawaii.gov/highways/v2x-intersections/>.

There will be no staging areas as all work vehicles and/or equipment will not remain at any of the work sites and will be removed at the end of each workday.

Consultations

Entitled consulting parties during the Section 106 process includes the Advisory Council of Historic Preservation, SHPO, NHO, and if applicable, local governments and applicants for federal assistance, permits, licenses and other approvals.

NHO and/or Hawaiian Descendants

NHO and Native Hawaiian descendants with ancestral, lineal or cultural ties to, cultural and historical property knowledge of and/or concerns for, and cultural or religious attachment to the proposed Area of Potential Effect (APE) are asked to provide a response to this letter within 30 days of notification.

Other Individuals and Organizations

Individuals and organizations with legal, economic or historic preservation interest are requested to respond within 30 days of notification and demonstrate your interest in the proposed undertaking and provide intent to participate in the Section 106 process. Your participation is subject to FHWA approval.

Request for Comment on the APE

We would like to invite you to comment on the proposed APE. The APE has been calculated to be 10.9 acres. This includes the existing traffic signal cabinet and the parking area at each intersection. Please refer to the typical installation detail which can be found at: <https://hidot.hawaii.gov/highways/v2x-intersections/>.

November 28, 2025

Page 3

Identification of Historic Properties within the APE

We welcome any information you may have on historical and cultural sites that have been recorded in or which you may have knowledge of within the proposed APE. In addition, if you are acquainted with any persons or organization that is knowledgeable about the proposed APE, or any descendants with ancestral, lineal or cultural ties to or cultural knowledge and/or historical properties information of or concerns for, and cultural or religious attachment to the proposed project area, we would appreciate receiving their names and contact information within 30 days of notice.

Conclusion

On behalf of FHWA, HDOT by way of this letter is notifying you of the proposed Cellular V2X System project. Should you want to participate in the Section 106 process, we request your written intent. Please also provide your comments on the proposed APE, any information you may have on cultural and/or historical sites that have been recorded within the APE, as well as the names and contact information of people/organizations who may have cultural affiliations and historical properties information in the vicinity of the proposed APE.

We would appreciate a written response within 30 days from date of receipt to Neal Honma, Project Manager, Traffic Branch via email at DOT.HWY-Tesign@hawaii.gov or by U.S. Postal Service to HDOT Traffic Branch, 601 Kamokila Boulevard, Room 602, Kapolei, Hawaii 96707.

If you have any questions, please contact Mr. Honma at (808) 692-8477 or via email at neal.k.honma@hawaii.gov.

c: FHWA

90 days



P. 916.568.3021
F. 916.561.0574

October 27, 2025

Lee Kimo,
Hawaii Island Burial Council
40 Pokela St.
Hilo, HI 96720

Dear Chair Kimo,

RE: NAGPRA Section 6 Summary Provision and Invitation to Consult – Hawaii & South Pacific

We are writing to inform you that the Los Rios Community College District (LRCCD) has in its possession and control Native Hawaiian and South Pacific items. We sincerely apologize for the decades-long delay in contacting you about these items. Over the years, LRCCD struggled with lack of available information about cultural items and a lack of communication of NAGPRA responsibilities between administration and faculty that resulted in previously incomplete summaries and inventories. We are committed to the respectful repatriation of cultural items in accordance with the Native American Graves Protection and Repatriation Act (NAGPRA) Summary Provision, and the District has taken to correcting this lapse very seriously and we hope that this letter marks the beginning of our efforts to demonstrate this commitment.

Museum Collection

LRCCD is made up of four campuses: American River College, Cosumnes River College, Folsom Lake College, and Sacramento City College. Jeremiah B. Lillard was the first president of Sacramento Junior College, now Sacramento City College, between 1923-1940, where he amassed a large collection of Native American items. While most of the collection was acquired through archaeological excavation in California, Lillard was also known to trade, purchase, and sell archaeological and ethnographic items with other collectors throughout the country. After his passing, the majority of the Lillard's collection was transferred to University of California, Berkeley and California State Parks in 1942 but some of the items remained at LRCCD and are now housed at American River College and Sacramento City College.

The collection contains approximately 13 items from Hawaii that include *kapa* clothes, *kapa* beaters, *Ulu maika* stones, net sinkers, modified stones, etc. The collection also includes 2 worked stones, possibly from New Guinea, and 8 *kapa* clothes from unknown areas in the South Pacific, likely Samoa and Fiji, but possibly Hawaii. We have included a report that contains additional descriptions of these items. We greatly value your expertise and guidance in accurately identifying these items. If you notice any inaccuracies or misattributions, please let us know and we will promptly update our records.

We have also included items from unknown geographic locations. We hope that through consultation we will be able to identify these items and move through the repatriation process. Images of any items are available upon request.

Known Hazards

LRCCD does not have knowledge or record of any potentially hazardous substances used to treat the items in the collection. If your Organization is interested in requesting additional analysis to determine if there are any potential treatments, we are happy to reach out to external partners to explore options for identifying substances used on the items.

Duty of Care

We are also committed to seeking and following your Organizations guidance concerning the care and use of Native Hawaiian cultural items in our possession, control, or custody consistent with NAGPRA's Duty of Care Regulation [43 CFR 10.1(d)]. If you have written guidance already prepared, we would be grateful to receive it.

Invitation to Consult

We welcome the opportunity to engage with you in meaningful consultation with your Organization. We also understand that you are likely being inundated with similar requests. A consultation would allow us to establish a relationship and review what is known about the items to help you determine if any should be repatriated. Consultation would also provide an opportunity for you to share guidance on culturally appropriate care of the items.

Information Sharing and Communication

If you would like to request images or further information, please contact James Crandall, Director of NAGPRA and Special Projects, at crandaj@losrios.edu or (916) 286-3652.

To help guide us through the NAGPRA process and facilitate consultation, we have engaged the services of a NAGPRA consultant. If you are interested in scheduling a virtual consultation, please reach out to Jori Hurst at jori@nagpra.info or (303) 894-0648 ext. 104.

Please find enclosed a list of letter recipients. If you know of any other NHO or individual, including a lineal descendant, who may also have an interest, we would appreciate that information. We would also like to know if someone other than yourself or others to whom this letter was sent should be contacted.

Thank you for your time and thoughtful consideration.

Respectfully,



Jamey Nye, Deputy Chancellor
Los Rios Community College District

Enclosures: Report of Native Hawaiian & South Pacific Items in the Control and Possession
of LRCCD
Report of Native American or Native Hawaiian Items in the Control and
Possession of the LRCCD – Unknown Geographic Locations
Summary Distribution List

Cc: National NAGPRA Program – Summary Submission
James Crandall, Director of NAGPRA and Special Projects
Bernstein & Associates NAGPRA Consultants

Please contact Jori Hurst, Associate, at Bernstein & Associates NAGPRA Consultants, at jori@nagpra.info or (303) 894-0648 ext. 104 to receive the reports and/or mailing list referenced in the attachment list.

STATEN ISLAND MUSEUM

1000 Richmond Terrace, Bldg A
Staten Island, New York 10301
StatenIslandMuseum.org

TEL. 718 727 1135
FAX 718 273 5683

August 13, 2025

Lee Kimo ,
Hawaii Island Burial Council
40 Pokela St.
Hilo, HI 96720

**Subject Line: NAGPRA Section 6 Summary Submission and invitation to
consult –Hawaii**

Dear Chair Kimo,

We hope this letter finds you well. During a recent assessment of the Staten Island Institute of Arts & Sciences' (d.b.a. Staten Island Museum) compliance with the Native American Graves Protection and Repatriation Act (NAGPRA), it came to our attention that the museum did not submit a Summary to your Native Hawaiian Organization (NHO). We sincerely apologize for this oversight and are dedicated to working with you to identify and repatriate unassociated funerary objects, objects of cultural patrimony, and sacred objects that are culturally affiliated with your NHO. We also welcome the opportunity to consult with you regarding traditional care and the appropriate use of cultural items. The Staten Island Museum is committed to respectful repatriation, and we hope this letter serves as the first step in demonstrating this commitment.

Staten Island Museum Native American Collection

The Staten Island Museum has possession and control of approximately 360 ethnographic Native American cultural items from diverse regions of the country, 2 of which are attributed to Hawaii. These items, known collectively as the Staten Island Museum Native American Ethnographic Collection, were donated or bequeathed to the Staten Island Museum by multiple donors (see enclosure) since the museum's foundation in 1881.

For your review, enclosed are the following reports:

- Comprehensive List of Native Hawaiian Items in the Possession or Control of the Staten Island Museum
- Comprehensive List of Native American Ethnographic Items in the Possession or Control of the Staten Island Museum – Completely Unknown Culture and Unknown Geography
- Complete List of Donors and Collectors Associated with Native American Items in the Possession or Control of the Staten Island Museum

Known Hazard

Staten Island Museum has no knowledge or record of any potentially hazardous substances being used to treat the items in our care.

Duty of Care

We are also committed to seeking and following Native Hawaiian guidance concerning the care and use of Native Hawaiian cultural items in our possession, control, or custody consistent with NAGPRA's Duty of Care Regulation 43 CFR 10.1(d). **If you have written guidance already prepared, we would welcome that information.**

Invitation to Consult

We welcome the opportunity to engage with you in meaningful consultation regarding the Staten Island Museum Native American Collections. Consultation would provide an opportunity for your NHO to identify if items may be a sacred object, object of cultural patrimony, or unassociated funerary object and should be repatriated. It would also be an opportunity for your NHO to provide guidance on care, handling, and use per NAGPRA's Duty of Care Regulation 43 CFR 10.1(d).

Information Sharing and Communication

If you are interested in scheduling a consultation, requesting images, sharing guidance, or have any questions, please contact Colleen Evans, Director of Natural Science, (718) 483-7104 and cevans@statenismuseum.org

Please find enclosed a list of letter recipients. If you know of any other NHO or individual, including a lineal descendant, who may also have an interest, we would appreciate that information. We would also like to know if someone other than yourself or others to whom this letter was sent should be contacted.

Thank you for your time and thoughtful consideration, and I apologize again for the delay in sharing this information with your NHO.

Respectfully,



Janice Monger
President and CEO

Enclosures: Comprehensive List of Native Hawaiian Items in the Possession or Control of the Staten Island Museum

Comprehensive List of Native American Ethnographic Items in the Possession or Control of the Staten Island Museum – Completely Unknown Culture and Unknown Geography (Sorted by Item Type)

Collector / Donor List
Distribution List

**Comprehensive List of Native Hawaiian Items in the Possession or Control
of the Staten Island Museum**

State	Item ID	Item Name	Description	Donor
Hawaii	A1918.1301	Tapa Cloth	Tapa cloth made in Hawaii.	R. P. Dow
Hawaii	A1980.1.3	Skirt	Grass Skirt w/ Ankle Bands and Orange Leis	Mrs. Gilbert Chapman

**Comprehensive List of Native American Items in the Possession or Control of the Staten Island Museum
From Completely Unknown Geography and Unknown Culture (Sorted by Item Type)**

Item ID	Item Name	Description	Source	Donor
AX2012.170	Ankle boots	One of a pair of leather slit back ankle boots with no sole.		Unknown
A1953.4390.3	Arrow	One arrow with a feathered wooden shaft and a metal point.		Robert Owens
AX2010.217	Arrows	Loose arrows with feathered ends		Unknown
A1961.19.2	Bag	Wool bag with beaded pendant.		Henry Schnakenberg
A1911.300.1	Basket	Incised bowl or cup, motif of trailing vine and two birds, carved gourd		Mrs. A.M. McKenzie
A1949.4082.12	Basket	A large woven basket with human-like forms woven into the sides		Mark B. Kerr
A1949.4082.13	Basket	Small woven basket with contrasting brown color design.		Mark B. Kerr
A1949.4082.19	Basket	Woven Basket		Mark B. Kerr
A1949.4082.21	Basket	Woven covered basket, badly damaged, triangle motif, possible lid found inside basket		Mark B. Kerr
A1976.5.8	Basket	Two baskets attached with twine yoke.		Mrs. Reba F. Morse
AX2010.227	Basket	A basket made of grass fibers.		Unknown
FIC.135.2012	Basket	Painted gourd basket, rim finished with reed and thread.		Unknown
FIC.136.2012	Basket	Brown woven basket with contrasting design motif of dark brown, red-orange, and yellow.		Unknown
FIC.168.2012	Basket	Woven basket lid, light brown with contrasting medium brown swirl design.		Unknown
FIC.183.2010	Basket	Basket		Unknown
FIC.3.2022	Basket	Finely woven light brown basket with red and green embroidered geometric motif.		Unknown
FIC.5.2022	Basket	Basket		Unknown
FIC.58.2006	Basket	mini basket		Unknown



DEPARTMENT OF THE NAVY

25 OCT -6 012:37
COMMANDER
UNITED STATES PACIFIC FLEET
250 MAKALAPA DRIVE
PEARL HARBOR HI 96860-3131

HISTORIC PRES DIV
DEPT OF LAND &
NATURAL RESOURCES

IN REPLY REFER TO:

5090

Ser N46/0713

September 17, 2025

Dear Sir or Madam:

SUBJECT: NOTICE OF AVAILABILITY OF THE FINAL ENVIRONMENTAL IMPACT STATEMENT/OVERSEAS ENVIRONMENTAL IMPACT STATEMENT FOR HAWAII-CALIFORNIA TRAINING AND TESTING

The Department of the Navy (Navy) (including both the U.S. Navy and the U.S. Marine Corps), as the lead agency, jointly with the U.S. Coast Guard, U.S. Army, and U.S. Air Force, has prepared the Hawaii-California Training and Testing (HCTT) Final Environmental Impact Statement (EIS)/Overseas EIS (OEIS). The Final EIS/OEIS includes an analysis of the potential environmental effects associated with at-sea training and testing activities, and the modernization and sustainment of ranges (collectively referred to as “military readiness activities”) within the HCTT Study Area. The purpose of the Proposed Action is to ensure U.S. military services are able to organize, train, and equip service members and personnel to meet their respective national defense missions. Mitigation measures that could avoid, minimize, or mitigate potential environmental effects of the Proposed Action are also proposed in the Final EIS/OEIS.

The completion of the Final EIS/OEIS follows years of data gathering, analysis, stakeholder and tribal engagement, and public involvement. The military services held three in-person Draft EIS/OEIS public meetings and a virtual public meeting in 2025 and obtained stakeholder and tribal input at several stages during the environmental planning process. The Final EIS/OEIS includes responses to comments received on the Draft EIS/OEIS. The military services will wait a minimum of 30 days after publication of the Final EIS/OEIS before making a decision on the action.

The military services encourage the public to view the Final EIS/OEIS, which is available online for download or in print at the public libraries listed on the project website at www.nepa.navy.mil/hctteis/.

The Final EIS/OEIS includes an analysis of military readiness activities using new information, including an updated acoustic analysis, updated marine mammal density data, and evolving and emergent best available science. Proposed military readiness activities are similar to those analyzed in the 2018 Hawaii-Southern California Training and Testing EIS/OEIS and the at-sea activities in the 2022 Point Mugu Sea Range EIS/OEIS and are consistent with activities conducted off Hawaii and California for more than 80 years.

The Proposed Action is to conduct at-sea military readiness activities, comprised of training, testing, and modernizing and sustaining ranges, in the HCTT Study Area. Training and testing activities that include the use of active sonar, explosives, and other sources of underwater sound would employ mitigation measures intended to reduce or avoid adverse effects on marine

5090
Ser N46/0713
September 17, 2025

the at-sea activities in the 2022 Point Mugu Sea Range EIS/OEIS and are consistent with activities conducted off Hawaii and California for more than 80 years.

The Proposed Action is to conduct at-sea military readiness activities, comprised of training, testing, and modernizing and sustaining ranges, in the HCTT Study Area. Training and testing activities that include the use of active sonar, explosives, and other sources of underwater sound would employ mitigation measures intended to reduce or avoid adverse effects on marine species. Range modernization and sustainment activities include 1) new special use airspace in Southern California, 2) installation and modernization of underwater ranges in Southern California, 3) sustainment of undersea ranges throughout the Study Area, 4) deployment of seafloor cables and connected instrumentation south and west of San Clemente Island in California and northeast of Oahu and west of Kauai in Hawaii, 5) installation and maintenance of mine warfare and other training areas offshore of Hawaii and Southern California, and 6) installation and maintenance of underwater platforms in Hawaii and Southern California.

Visit www.nepa.navy.mil/hctteis/ to learn more about the project and the environmental analysis. You may also contact Ms. Heather Paynter, U.S. Pacific Fleet Command Environmental Public Affairs Specialist, 808-474-8441, CPF-Environmental-PA@us.navy.mil, if you have questions.

Please help the military services inform the community about the availability of the Final EIS/OEIS by sharing this information with your staff and interested individuals.

Sincerely,



J. H. BEATTIE
Captain, U.S. Navy
Deputy Fleet Civil Engineer
By direction

ID# EISX-007-17-USN-1724283453

JOSH GREEN, M.D.
GOVERNOR | KE KIA'ĀINA

SYLVIA LUKE
LIEUTENANT GOVERNOR | KA HOPE KIA'ĀINA



STATE OF HAWAII | KA MOKU'ĀINA 'O HAWAI'I
DEPARTMENT OF LAND AND NATURAL RESOURCES
KA 'OIHANA KUMUWAIWAI 'ĀINA

STATE HISTORIC PRESERVATION DIVISION
KAKUHIHEWA BUILDING
601 KAMOKILA BLVD, STE 555
KAPOLEI, HAWAII 96707

October 15, 2025

DAWN N.S. CHANG
CHAIRPERSON
BOARD OF LAND AND NATURAL RESOURCES
COMMISSION ON WATER RESOURCE MANAGEMENT

RYAN K.P. KANAKA'OLE
FIRST DEPUTY

CIARA W.K. KAHAHANE
DEPUTY DIRECTOR - WATER

AQUATIC RESOURCES
BOATING AND OCEAN RECREATION
BUREAU OF CONVEYANCES
COMMISSION ON WATER RESOURCE MANAGEMENT
CONSERVATION AND COASTAL LANDS
CONSERVATION AND RESOURCES ENFORCEMENT
ENGINEERING
FORESTRY AND WILDLIFE
HISTORIC PRESERVATION
KAHOOLAWE ISLAND RESERVE COMMISSION
LAND
STATE PARKS

TO: Chairs of the Island Burial Councils

THRU: Kea Calpito, History & Culture Branch Chief 

FROM: Jessica Puff, SHPD Administrator 

SUBJECT: UPDATE on the Revised Descendancy Claim Application and Administrative Information and Clarification Regarding the Definition, Recognition, and Application Process for Cultural Descendants.

The State Historic Preservation Division (SHPD) has revised its Descendancy Claim Application and provides this memo as a follow up to its previous correspondence, dated July 21, 2025.

The revised application establishes a process in which an applicant may not need to apply more than once to be recognized as a cultural descendant to iwi kupuna within a specified ahupua'a, provided that the respective burial council recognizes the applicant as either a lineal or cultural descendant to certain iwi kupuna, *and* any additional iwi kupuna, within that specified ahupua'a.

SHPD also recognizes that in some cases, descendants might only choose to apply for recognition to specific iwi kupuna rather than all iwi kupuna within an ahupua'a. Therefore, the revised application allows the applicants to select one of the following options:

1. request that SHPD's recommendation to the council include that their recognition be extended to any additional iwi kupuna within the same ahupua'a as the iwi kupuna listed in the application; or
2. request that their recognition be limited to the iwi kupuna listed in the application and decline future notifications and/or consultations regarding additional iwi kupuna within the ahupua'a.

Existing descendants who were previously recognized by the burial council as either a lineal or cultural descendant to iwi kupuna within an ahupua'a and are seeking subsequent recognition to additional iwi kupuna within that same ahupua'a will need to submit a claim once more using the

revised application. However, to help streamline the process, the revised application includes an option for applicants to indicate that they have been “previously recognized,” allowing them to skip certain sections of the application while providing the SHPD recognition letter and/or date of the burial council meeting in which they were recognized. In addition to the two options above, there will be a third option for these applicants to request that their recognition be extended to any additional iwi kupuna within the same ahupua‘a as the iwi kupuna they was previously recognized to, as listed in Section I of the application.

The selected option will be reflected in SHPD’s descendancy recognition memo that is distributed to the burial council, by either recommending that an applicant be recognized as a lineal or cultural descendant to a specific iwi kupuna, as identified in the subject of the memo, and/or by including language recommending that the applicant also be recognized as a cultural descendant to all additional iwi kupuna within that same ahupua‘a. In accordance with Hawai‘i Administrative Rules §13-300-35, it shall be the decision of the council to recognize the applicant.

For clarity, applicants who are recognized as lineal or cultural descendants to non-Native Hawaiian skeletal remains are not eligible to have their recognition extended to any additional iwi kupuna within the an ahupua‘a since this particular process is limited to recognitions by the island burial councils for Native Hawaiian skeletal remains.

SHPD offers the following administrative information to explain the above changes.

HAR §13-300-2 defines a “cultural descendant” as follows:

“Cultural descendant” means with respect to non Native Hawaiian skeletal remains, a claimant recognized by the department as being the same ethnicity, or with respect to Native Hawaiian skeletal remains, a claimant recognized by the council after establishing genealogical connections to Native Hawaiian ancestors who once resided or are buried or both, in the same ahupua‘a or district in which certain Native Hawaiian skeletal remains are located or originated from.

This definition indicates that in the case of “cultural descendants,” a genealogical connection does not need to be tied to any specific iwi kupuna, but instead, to an ancestor within the same ahupua‘a in which certain iwi kupuna are located. For that reason, once a claimant has been recognized by the council as a lineal or cultural descendant to iwi kupuna found within an ahupua‘a, the claimant also qualifies to be recognized as a “cultural descendant” to any additional iwi kupuna within that same ahupua‘a since the claimant has already satisfied the HAR requirement of demonstrating a genealogical connection to ancestors within the ahupua‘a in which iwi kupuna are located or originated from. Therefore, they meet the cultural descendant criteria for any additional iwi kupuna discovered in that same ahupua‘a since those iwi kupuna would fall within the same geographic and cultural context to which the original recognition applied.

SHPD notes that individuals seeking recognition as a “lineal descendant” to iwi kupuna must submit a new application each time, regardless of any prior recognition since the claimant is required to establish “direct or collateral genealogical connections *to certain* Native Hawaiian skeletal remains.”



25 OCT 27 A11:46

STATE OF HAWAII | KA MOKU'ĀINA 'O HAWAII'
DEPARTMENT OF TRANSPORTATION | KA 'OIHANA ALAKAU

HAWAII DISTRICT
50 MAKAAALA STREET
HILO, HAWAII 96720-5107

EDWIN H. SNIFFEN
DIRECTOR
KA LUNA HO'OKELE

Deputy Directors
Nā Hope Luna Ho'okele
DREANALEE K. KALILI
TAMMY L. LEE
CURT T. OTAGURO
ROBIN K. SHISHIDO

IN REPLY REFER TO:

HWY-H 25-2.200

October 23, 2025

Ms. Shantel Freeman, Puna Representative
Hawaii Island Burial Council
601 Kamokila Boulevard, Suite 555
Kapolei, Hawaii 96707

Dear Ms. Freeman:

Subject: National Historic Preservation Act, Section 106 Consultation with
Native Hawaiian Organizations and Potential Consulting Parties
Keaau-Pahoa Road Intersection Improvements at Makuu Drive and Orchidland Drive
Keaau and Waikahekahe Ahupuaa, Moku of Puna, Island of Hawaii, Hawaii
Federal Aid Project No.: HSIP-0130(034)
Tax Map Keys: (3) 1-5-015:180 (Portion), (3) 1-5-015:188 (Portion), (3) 1-5-015:999
(Portion of Existing Keaau-Pahoa Road Right-of-Way), (3) 1-5-016:161 (Portion),
(3) 1-5-016:999 (Portion of Existing Keaau-Pahoa Road Right-of-Way),
(3) 1-5-033:249 (Portion), (3) 1-5-033:250 (Portion), (3) 1-5-033:251 (Portion),
(3) 1-5-033:999 (Portion of Existing Keaau-Pahoa Road Right-of-Way),
(3) 1-6-005:165 (Portion), (3) 1-6-009:244 (Portion), (3) 1-6-009:245 (Portion),
(3) 1-6-009:246 (Portion), (3) 1-6-009:388 (Portion), and (3) 1-6-010:137 (Portion)

On behalf of the Federal Highway Administration (FHWA), the State of Hawaii Department of Transportation (HDOT) is hereby notifying you that on October 16, 2025, Section 106 of the National Historic Preservation Act (NHPA) of 1966 (amended, 2006), was initiated with the Department of Land and Natural Resources State Historic Preservation Officer (SHPO) for the subject intersection improvements project.

The proposed federally funded HDOT project is considered a federal action and undertaking as defined in 36 *Code of Federal Regulations (CFR)*, Part § 800.16(y). Effective May 1, 2016, FHWA has issued a Programmatic Delegation of Authority allowing the HDOT and local public agencies to conduct NHPA Section 106 consultations with the SHPO, Native Hawaiian Organizations (NHO), and other consulting parties per 36 *CFR*, Section 800.2 (c) (4). The FHWA will remain responsible for all findings and determinations charged to the agency during the Section 106 process.

Overview of the Undertaking

The proposed roadway improvements project is located on state-owned and private land in the Puna District on the island of Hawaii. The proposed project includes construction of roundabouts at the Makuu Drive and Orchidland Drive intersections with State Route (SR) 130 to improve safety and multimodal accessibility. The roundabouts will feature eight-foot shared use paths, bus pullouts, concrete splitter islands, central islands with mountable truck aprons, and lighting in accordance with Federal design standards. Site preparation and construction activities include grading, excavation, and the relocation of both subsurface and above-ground utilities, including electrical, water, wastewater, stormwater, and communication lines, as well as utility poles and associated overhead lines.

Consultations

Entitled consulting parties during the Section 106 process includes the Advisory Council of Historic Preservation, SHPO, NHO, and if applicable, local governments and applicants for federal assistance, permits, licenses and other approvals.

NHO and/or Hawaiian Descendants

NHO and Native Hawaiian descendants with ancestral, lineal or cultural ties to, cultural and historical property knowledge of and/or concerns for, and cultural or religious attachment to the proposed Area of Potential Effect (APE) are asked to provide a response to this letter within 30 days of notification.

Other Individuals and Organizations

Individuals and organizations with legal, economic or historic preservation interest are requested to respond within 30 days of notification and demonstrate your interest in the proposed undertaking and provide intent to participate in the Section 106 process. Your participation is subject to FHWA approval.

Request for Comment on the Area of Potential Effect

The proposed APE encompasses two (2) intersections on SR 130: Makuu Drive and Orchidland Drive. The APE includes existing HDOT right-of-way (ROW) and will require the partial acquisition of multiple parcels to accommodate intersection improvements and associated utility relocations.

The APE at the Makuu Drive intersection extends approximately 260 linear feet along Makuu Drive from the SR 130 ROW line, and approximately 1,450 linear feet north (Hilo bound) and approximately 710 linear feet south (Pahoa bound) along SR 130 as shown on the attached APE map. The APE totals approximately 7.0 acres and includes partial acquisition of six (6) parcels totaling approximately 28,263 square feet (0.65 acre). Information regarding these parcels is provided in Table 1.

Table 1. Proposed Acquisitions at Makuu Drive

<u>Item</u>	<u>TMK</u>	<u>Total Lot Size (sq.ft)</u>	<u>Acquisition</u>	<u>Amount of Acquisition (sq.ft.)</u>	<u>Need for Acquisition</u>	<u>Existing Use</u>
1	(3) 1-5-016:161	41,818	Partial	4,091	Intersection Improvements, electrical utilities addition/relocation	Vacant Lot
2	(3) 1-5-015:188	4,771,214	Partial	12,000	Intersection Improvements	Road
3	(3) 1-5-015:180	41,818	Partial	3,389	Intersection Improvements, electrical utilities addition/relocation	Vacant Lot
4	(3) 1-6-009:244	52,751	Partial	500	Intersection Improvements, electrical utilities addition/relocation	Residential
5	(3) 1-6-009:245	53,797	Partial	6,033	Intersection Improvements, electrical utilities addition/relocation	Vacant Lot
6	(3) 1-6-009:246	54,842	Partial	2,250	Intersection Improvements, electrical utilities addition/relocation	Vacant Lot

The APE at the Orchidland Drive intersection extends approximately 160 linear feet along Orchidland Drive from the SR 130 ROW, and approximately 750 linear feet north (Hilo bound) and approximately 785 linear feet south (Pahoa bound) along SR 130 as shown on the attached APE map. The APE totals approximately 5.5 acres and includes partial acquisition of six (6) parcels totaling approximately 24,630 square feet (0.57 acre). Information regarding these parcels is provided in Table 2.

Table 2. Proposed Acquisitions at Orchidland Drive

<u>Item</u>	<u>TMK</u>	<u>Total Lot Size (sq.ft)</u>	<u>Acquisition</u>	<u>Amount of Acquisition (sq.ft.)</u>	<u>Need for Acquisition</u>	<u>Existing Use</u>
1	(3) 1-6-010:137	40,162	Partial	2,930	Intersection improvements and electrical utilities addition/relocation	Commercial
2	(3) 1-6-005:165	9,289,780	Partial	8,400	Intersection improvements	Road
3	(3) 1-6-009:388	124,756	Partial	1,499	Intersection improvements, waterline utilities relocation and electrical utilities addition/relocation	Church
4	(3) 1-5-033:251	40,511	Partial	5,553	Intersection Improvements and waterline utilities relocation	Residential
5	(3) 1-5-033:250	44,867	Partial	5,553	Intersection Improvements and waterline utilities relocation	Residential
6	(3) 1-5-033:249	49,223	Partial	695	Intersection Improvements and waterline utilities relocation	Residential

The construction staging area will be located within the APE.

Identification of Historic Properties within the APE

We welcome any information you may have on historic and cultural sites that have been recorded in or which you may have knowledge of within the proposed APE. In addition, if you are acquainted with any persons or organization that is knowledgeable about the proposed APE, or any descendants with lineal or cultural ties to or cultural knowledge and/or historical properties information of or concerns for, and cultural or religious attachment to the proposed project area, we would appreciate receiving their names and contact information within 30 days of notice.

Ms. Shantel Freeman, Puna Representative
October 22, 2025
Page 5

HWY-H 25-2.200

Conclusion

On behalf of FHWA, the HDOT by way of this letter is notifying you of the proposed Keaau-Pahoa Road Intersection Improvements at Makuu Drive and Orchidland Drive. Should you want to participate in the Section 106 process, we request your written intent. Please also provide your comments on the proposed APE, any information you may have on cultural and/or historical sites that have been recorded within the APE, as well as the names and contact information of people/organizations who may have cultural affiliations and historical properties information in the vicinity of the proposed APE.

We would appreciate a written response within thirty (30) days from the date of receipt of this letter to Ms. Courtney Supe, Project Manager via email at courtney.k.supe@hawaii.gov, or by U.S. Postal Service to 50 Makaala Street, Hilo, Hawaii 96720.

Sincerely,



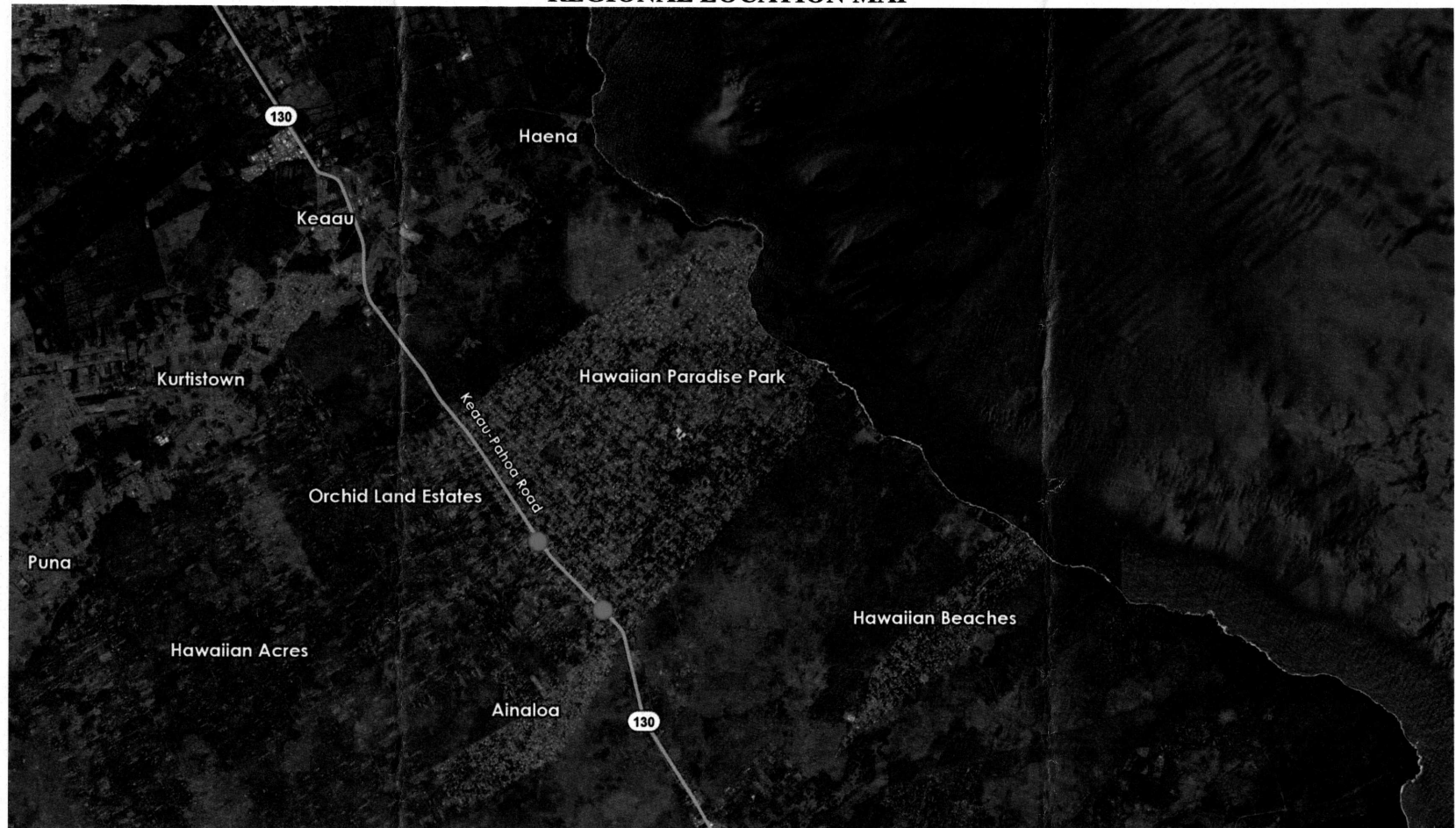
ANNETTE D.H. MATSUDA
Acting Hawaii District Engineer

c: FHWA

Attachments:

Regional Location Map
Area of Potential Effect Maps

REGIONAL LOCATION MAP



Legend

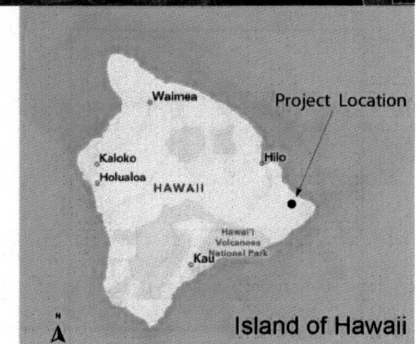
● Project Area

Regional Location Map

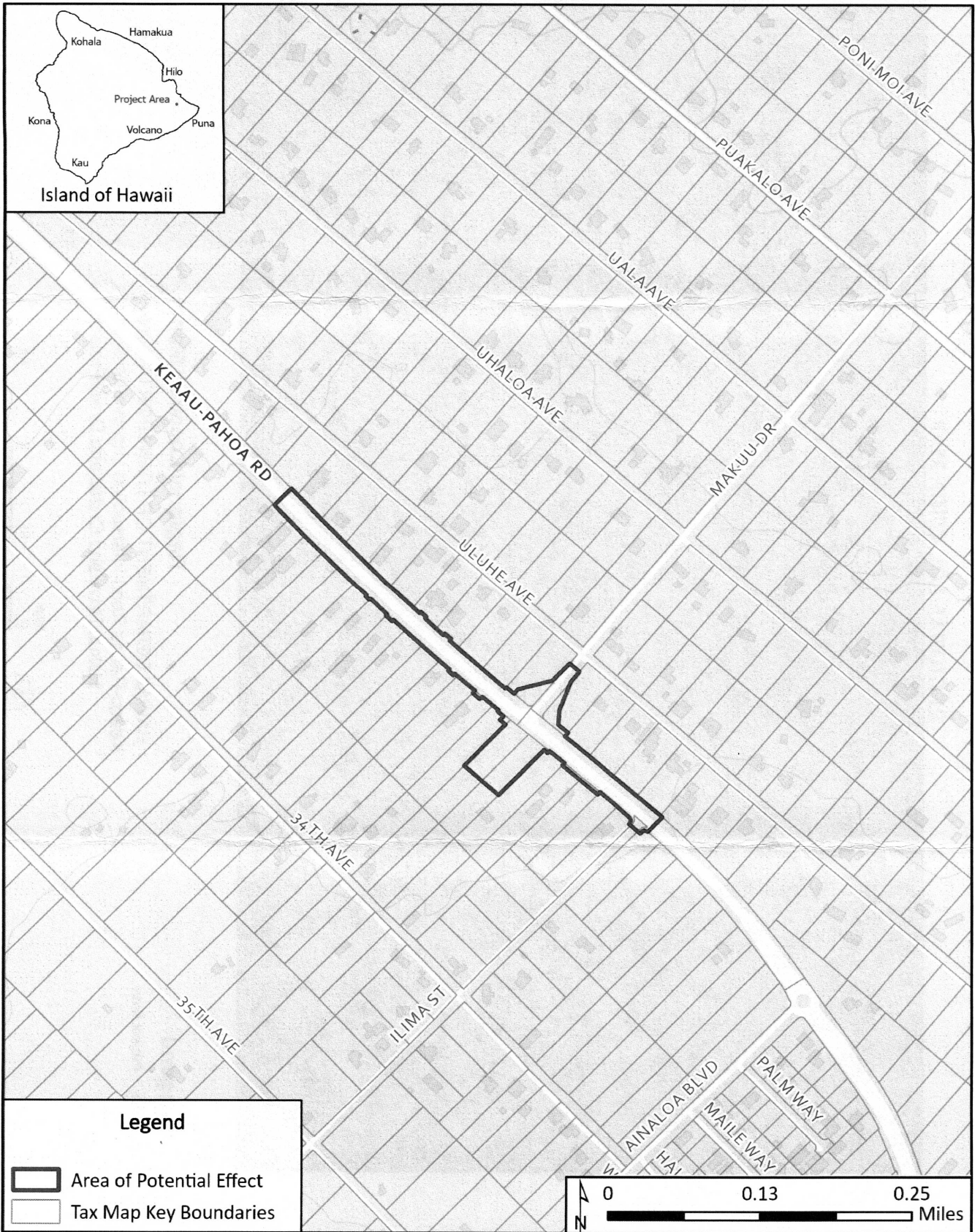
HAWAII DEPARTMENT OF TRANSPORTATION
Keaau-Pahoa Road Intersection Improvements at
Makuu Drive and Orchidland Drive Project



Miles
0 1.5 3 4.5



AREA OF POTENTIAL EFFECT AT MAKUU DRIVE



AREA OF POTENTIAL EFFECT AT ORCHIDLAND DRIVE

