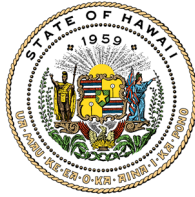


JOSH GREEN, M.D.
GOVERNOR | KE KIA'ĀINA

SYLVIA LUKE
LIEUTENANT GOVERNOR | KA HOPE KIA'ĀINA



**STATE OF HAWAII | KA MOKU'ĀINA 'O HAWAI'I
DEPARTMENT OF LAND AND NATURAL RESOURCES
KA 'OIHANA KUMUWAIWAI 'ĀINA**

STATE HISTORIC PRESERVATION DIVISION
KAKUHIHEWA BUILDING
601 KAMOKILA BLVD, STE 555
KAPOLEI, HAWAII 96707

DAWN N.S. CHANG
CHAIRPERSON
BOARD OF LAND AND NATURAL RESOURCES
COMMISSION ON WATER RESOURCE MANAGEMENT

RYAN K.P. KANAKA'OLE
FIRST DEPUTY

CIARA W.K. KAHAHANE
DEPUTY DIRECTOR - WATER

AQUATIC RESOURCES
BOATING AND OCEAN RECREATION
BUREAU OF CONVEYANCES
COMMISSION ON WATER RESOURCE MANAGEMENT
CONSERVATION AND COASTAL LANDS
CONSERVATION AND RESOURCES ENFORCEMENT
ENGINEERING
FORESTRY AND WILDLIFE
HISTORIC PRESERVATION
KAHOOLAWE ISLAND RESERVE COMMISSION
LAND
STATE PARKS

MEMORANDUM

TO: Members, Oahu Island Burial Council

FROM: Traven Apiki, Burial Sites Specialist

RE: **Contents of December 10, 2025 Oahu Island Burial Council Board Packet**

The contents of the December 10, 2025 Oahu Island Board packet are as follows:

1. OIBC December 10, 2025 Meeting Memo
2. OIBC December 10, 2025 Meeting Agenda
3. OIBC November 12, 2025 Draft Meeting Minutes
4. Letter from Hawai'i Department of Transportation, dated November 28, 2025, Regarding Section 106 Consultation on the Cellular Vehicle-To- Everything (V2X) System.
5. Letter from Bowers + Kubota Consulting, Inc., dated November 25, 2025, Regarding HRS Chapter 343 Environmental Assessment Pre-Assessment Consultation for Public Land Acquisition and Improvements for Kāne'ohe Property Project Located at 45-045 Kamehameha Highway, Kāne'ohe Ahupua'a, Ko'olaupoko District, Island of O'ahu TMK: (1) 4-5-035:010.
6. Letter from Hawai'i Department of Transportation, dated December 3, 2025, Regarding Section 106 Consultation on the Traffic Signal Modernization at Various Locations, Phase 4.
7. Letter from Hawai'i Department of Transportation, dated December 4, 2025, Regarding Section 106 Consultation on the Traffic Signal Modernization at Various Locations, Phase 4A.

Board Packets Available Online at:

<https://dlnr.hawaii.gov/shpd/about/branches/ibc/meetings/>

O‘ahu Island Burial Council Members

Name	Representation	Term Expiration Date
Benjamin Shafer	Ko‘olauloa	2020-2024
Charish Miller	Ko‘olaupoko	2025-2029
Makoa Caceres	Wai‘anae	2025-2029
Julian Ako	Kona	2025-2029
Chuck Erhorn	Landowner/Developer	2019-2023
Kamana’o Mills	Landowner/Developer	2021-2025
Vacant	Landowner/Developer	
Vacant	Waialua	
Vacant	‘Ewa	

JOSH GREEN, M.D.
GOVERNOR | KE KIA'ĀINA

SYLVIA LUKE
LIEUTENANT GOVERNOR | KA HOPE KIA'ĀINA



**STATE OF HAWAII | KA MOKU'ĀINA 'O HAWAI'I
DEPARTMENT OF LAND AND NATURAL RESOURCES
KA 'OIHANA KUMUWAIWAI 'ĀINA**

STATE HISTORIC PRESERVATION DIVISION
KAKUHIHEWA BUILDING
601 KAMOKILA BLVD, STE 555
KAPOLEI, HAWAII 96707

DAWN N.S. CHANG
CHAIRPERSON
BOARD OF LAND AND NATURAL RESOURCES
COMMISSION ON WATER RESOURCE MANAGEMENT

RYAN K.P. KANAKA'OLE
FIRST DEPUTY

CIARA W.K. KAHAHANE
DEPUTY DIRECTOR - WATER

AQUATIC RESOURCES
BOATING AND OCEAN RECREATION
BUREAU OF CONVEYANCES
COMMISSION ON WATER RESOURCE MANAGEMENT
CONSERVATION AND COASTAL LANDS
CONSERVATION AND RESOURCES ENFORCEMENT
ENGINEERING
FORESTRY AND WILDLIFE
HISTORIC PRESERVATION
KAHOOLAWE ISLAND RESERVE COMMISSION
LAND
STATE PARKS

MEMORANDUM

TO: Members, O'ahu Island Burial Council
FROM: Traven Apiki, Burial Sites Specialist
RE: **Notification of the Next O'ahu Island Burial Council Meeting**

The O'ahu Island Burial Council meeting has been scheduled as follows:

Date: Wednesday, December 10, 2025
Time: 10:00 AM – 4:30 PM
Place: Online via Teams

—AND—

**Department of Land and Natural Resources
Kalanimoku Building
Board Room #132
1151 Punchbowl St.
Honolulu, HI 96813**

Board members, staff, applicants, and testifiers can choose to participate either in-person or via ICT

Teams Meeting Link:

<https://zoom.us/j/93342987660>

Meeting ID: 933 4298 7660
Passcode: 1hekhX

Board Packets Available Online at:

<https://dlnr.hawaii.gov/shpd/about/branches/ibc/meetings/>

JOSH GREEN, M.D.
GOVERNOR | KE KIA'ĀINA

SYLVIA LUKE
LIEUTENANT GOVERNOR | KA HOPE KIA'ĀINA



**STATE OF HAWAII | KA MOKU'ĀINA 'O HAWAII'
DEPARTMENT OF LAND AND NATURAL RESOURCES
KA 'OIHANA KUMUWAIWAI 'ĀINA**

STATE HISTORIC PRESERVATION DIVISION
KAKUHIHEWA BUILDING
601 KAMOKILA BLVD., STE 555
KAPOLEI, HAWAII 96707

DAWN N.S. CHANG
CHAIRPERSON
BOARD OF LAND AND NATURAL RESOURCES
COMMISSION ON WATER RESOURCE
MANAGEMENT

RYAN K.P. KANAKA'OLE
FIRST DEPUTY

CIARA W.K. KAHAHANE
DEPUTY DIRECTOR - WATER

AQUATIC RESOURCES
BOATING AND OCEAN RECREATION
BUREAU OF CONVEYANCES
COMMISSION ON WATER RESOURCE
MANAGEMENT
CONSERVATION AND COASTAL LANDS
CONSERVATION AND RESOURCES
ENFORCEMENT
ENGINEERING
FORESTRY AND WILDLIFE
HISTORIC PRESERVATION
KAHOOLAWE ISLAND RESERVE COMMISSION
LAND
STATE PARKS

**DRAFT AGENDA
O'AHU ISLAND BURIAL COUNCIL**

DATE: Wednesday, December 10, 2025
TIME: 10:00 AM (HST)
PLACE: Department of Land and Natural Resources
Kalanimoku Building
Board Room #132
1151 Punchbowl St.
Honolulu, HI 96813
—AND—
Online via Zoom

This meeting will be held using interactive conference technology under section 92-3.7, Hawaii Revised Statutes (HRS). Board members, staff, applicants, testifiers, and the public can choose to participate in person, online via Zoom, or by telephone at +1 699 900 9128.

To Attend/Provide Testimony via Zoom:

<https://zoom.us/j/93342987660>

Meeting ID: 933 4298 7660
Passcode: 1hekhX

Board Packets Available Online at:

<https://dlnr.hawaii.gov/shpd/about/branches/ibc/meetings/>

- I. CALL TO ORDER**
- II. ROLE CALL/PULE**
- III. MINUTES**
 - A. Approval of the Minutes for November 12, 2025**
- IV. INADVERTENT DISCOVERIES/COMMUNICATIONS**

- A. Discussion Regarding Inadvertent Discovery of Unidentified Native Hawaiian Skeletal Remains, SIHP # 50-80-11-08819, at the Kihāpai Place Development Project, Kailua Ahupua‘a, Ko‘olaupoko District, Island of O‘ahu, TMK: (1) 4-3-058:065 and 066.**
- B. Discussion Regarding Inadvertent Discovery of Unidentified Native Hawaiian Skeletal Remains at Princess Ruth Keelikolani Middle School, Honolulu Ahupua‘a, Kona District, Oahu, TMK: (1) 2-1-009:001, 002, and 003 (por.).**
- C. Discussion Regarding Inadvertent Discovery of Unidentified Native Hawaiian Skeletal Remains at 4561 Aukai Avenue, Waikīkī, Ahupua‘a, Kona District, Island of O‘ahu. TMK: (1) 3-5-004:020.**
- D. Discussion Regarding Inadvertent Discovery of Unidentified Native Hawaiian Skeletal Remains at 5799 Kalanianaʻole Hwy, Waikīkī Ahupua‘a, Kona District, Island of O‘ahu, TMK: (1) 3-7-002:005.**
- E. Discussion Regarding Inadvertent Discoveries of Unidentified Native Hawaiian Skeletal Remains at Ālia at 888 Ala Moana Blvd., Honolulu Ahupua‘a, Kona District, Island of O‘ahu, TMK: (1) 2-1-056:017.**
- F. Discussion Regarding Inadvertent Discovery of Unidentified Native Hawaiian Skeletal Remains at Turtle Bay Resort; ‘Ō‘io 1, Ulupehupehu, and Punalau Ahupua‘a; Ko‘olaupoko District, Island of O‘ahu, TMKs: (1) 5-7-001:050.**
- G. Discussion Regarding Inadvertent Discovery of Unidentified Native Hawaiian Skeletal Remains at Laniākea during Kamehameha Highway Drainage and Safety Improvements Project, HDOT, Kuikuiloloa Ahupua‘a, Waialua District, Island of O‘ahu, TMKs: (1) 6-1-005:023 and 024; 6-1-009:002, 004, 018, 019, 020, 021, and 022; 6-1-010:001, 002, 003, 004, 005, 006, 007, 019, and 020.**
- H. Discussion Regarding Inadvertent Discovery of Unidentified Native Hawaiian Skeletal Remains at 418A North Kainalu Drive, Kailua Ahupua‘a, Ko‘olaupoko District, Island of O‘ahu, TMK: (1) 4-3-025:014.**
- I. Discussion Regarding Inadvertent Discovery of Unidentified Native Hawaiian Skeletal Remains at 59-585 D Ke Iki Road, Pūpūkea Ahupua‘a, Ko‘olaupoko District, Island of O‘ahu, TMK: (1) 5-9-003:016.**
- J. Discussion Regarding Inadvertent Discovery of Unidentified Native Hawaiian Skeletal Remains at Kalae (formerly Howard Hughes Corporation Block B West Project); Kaka‘ako, Honolulu Ahupua‘a, Kona District, Island of O‘ahu, TMK: (1) 2-1-001:133.**
- K. Discussion Regarding Inadvertent Discovery of Unidentified Native Hawaiian Skeletal Remains at Launiu (formerly Howard Hughes Corporation Block A Project); Kaka‘ako, Honolulu Ahupua‘a, Kona District, Island of O‘ahu, TMK: (1) 2-1-056:001.**
- L. Discussion Regarding Inadvertent Discoveries of Unidentified Native Hawaiian Skeletal Remains during implementation of HART H RTP City Center Archaeological Monitoring Plan, Halekauwila Street and Cooke Street; Nimitz Highway near Fort and Bishop Streets, various TMKs.**

- M. Discussion Regarding Inadvertent Discovery of Unidentified Native Hawaiian Skeletal Remains at Pōka‘ī Bay, Wai‘anae Ahupua‘a, Wai‘anae District, Island of O‘ahu, TMK: (1) 8-6-001:007.**
- N. Discussion Regarding Inadvertent Discovery of Unidentified Native Hawaiian Skeletal Remains at Mauna Lahilahi Beach Park, Mākaha Ahupua‘a, Wai‘anae District, Island of O‘ahu, TMK: (1) 8-4-001:008.**
- O. Discussion Regarding Letter from Hawai‘i Department of Transportation, dated November 28, 2025, Regarding Section 106 Consultation on the Cellular Vehicle-To-Everything (V2X) System.**
- P. Discussion Regarding Letter from Bowers + Kubota Consulting, Inc., dated November 25, 2025, Regarding HRS Chapter 343 Environmental Assessment Pre-Assessment Consultation for Public Land Acquisition and Improvements for Kāne‘ohe Property Project Located at 45-045 Kamehameha Highway, Kāne‘ohe Ahupua‘a, Ko‘olaupoko District, Island of O‘ahu TMK: (1) 4-5-035:010.**
- Q. Discussion Regarding Letter from Hawai‘i Department of Transportation, dated December 3, 2025, Regarding Section 106 Consultation on the Traffic Signal Modernization at Various Locations, Phase 4.**
- R. Discussion Regarding Letter from Hawai‘i Department of Transportation, dated December 4, 2025, Regarding Section 106 Consultation on the Traffic Signal Modernization at Various Locations, Phase 4A.**

V. NEW BUSINESS

- A. Executive Session to Consult with OIBC’s Attorney on Questions and Issues Pertaining to OIBC’s Powers, Duties, Privileges, Immunities, and Liabilities with Respect to Ongoing Investigations and Alleged Violations of Chapter 6E, HRS, and its Implementing Administrative Rules, that may Involve Burial Sites and Human Remains under OIBC’s Jurisdiction, Pursuant to HRS § 92-5(a)(4).**
- B. Discussion and Approval of the Department’s Recommendation to Recognize the Applicant, Trisha Kehaulani Watson Sproat, to Previously Identified Native Hawaiian Skeletal Remains, Iwi Kūpuna, at the Waikīkī Aquarium, Waikīkī Ahupua‘a, Kona District, Island of O‘ahu, TMK: (1) 3-1-031:006.**
The Council may elect to go into executive session pursuant to HRS § 6E-43.5(e). The Council may close a meeting whenever location or description of a Native Hawaiian Burial site is under consideration. The chairperson, by concurrence of a majority of members present at the meeting, shall be authorized to require the public to leave the meeting while the confidential matter is being discussed and reopen the meeting once the confidential matter is no longer being considered.
- C. Discussion Regarding Implementation of the Burial Treatment Plan for Iwi Kūpuna at Kawaiaha‘o Church Multi-Purpose Center/Building Project, Honolulu Ahupua‘a, Kona District, Island of O‘ahu, TMK: (1) 2-1-032:017.**
- D. Discussion Regarding Archaeological Inventory Survey and DRAFT Burial Treatment Plan for Native Hawaiian Skeletal Remains – Iwi Kūpuna – at the Waikīkī Aquarium, Waikīkī Ahupua‘a, Kona District, Island of O‘ahu, TMK: (1) 3-1-031:006.**

- E. Discussion Regarding Previously Identified Iwi Kupuna, SIHP # 50-80-14-10218, Identified During an Archaeological Inventory Survey for the Demolition and Construction of a New 2-Story SFD Project at 3037 Kalakaua Avenue, Waikiki Ahupua‘a, Kona District, Island of O‘ahu, TMK: (1) 3-1-033:006.**
- F. Discussion Regarding Archaeological Inventory Survey for the Rehabilitation of Chamber Level Waterproofing and Related Improvements Project, Phase 3 (DAGS Job No. 12-10-1004, 12-10-1045, 12-10-1046) at the Hawai‘i State Capitol Building located at 415 S. Beretania Street, Honolulu Ahupua‘a, Kona District, Island of O‘ahu, TMK: (1) 2-1-024:015 and (1) 2-1-024:016.**
- G. Discussion Regarding Ongoing Documentation and Recovery Efforts at Kauloa Regional Beach Park, Kualoa I Ahupua‘a, Ko‘olaupoko District, Island of O‘ahu, TMK: (1) 4-9-004:001.**
- H. Discussion Regarding Pali Lanes Adaptive Reuse Project, Kailua Ahupua‘a, Ko‘olaupoko District, Island of O‘ahu, TMKs (1) 4-2-038:020 and portions of 015, 034, and 045.**
- I. Discussion Regarding Addendum Archaeological Inventory Survey in Support of the Kihapai Place Development Project, Kailua Ahupua‘a, Ko‘olaupoko District, Island of O‘ahu, TMK: (1) 4-3-058:065 and 066.**
- J. Discussion on the Draft Burial Treatment Plan for the Kihapai Place Development Project, Kailua Ahupua‘a, Ko‘olaupoko District, Island of O‘ahu, TMK: (1) 4-3-058:065 and 066.**
- K. Discussion Regarding Archaeological Inventory Survey for the Proposed Olai Green Hydrogen and Solar Project, Honouliuli Ahupua‘a, ‘Ewa District, Island of O‘ahu TMK: (1) 9-1-031:001 and (1) 9-1-031:008.**
- L. Discussion Regarding Supplemental Archaeological Inventory Survey for the City Center Portion of the Honolulu Rapid Transit Project, Honolulu Ahupua‘a, Honolulu (Kona) District, O‘ahu, TMKs: (1) 2-1-014, (1) 2-1-016, (1) 2-1-026, (1) 2-1-027, (1) 2-1-030, (1) 2-1-031, (1) 2-1-050, (1) 2-1-051, and (1) 2-1-052 (multiple parcels).**
- M. Discussion Regarding the Recommendation of the O‘ahu Island Burial Council to Accept the Testimony Presented Regarding Native Hawaiian Burial Sites Located at Waikiki Ahupua‘a, Kona District, Island of O‘ahu, TMK: (1) 2-7-011:008 and (1) 2-7-011:009.**
- N. Discussion Regarding an Update on the O‘ahu Island Burial Council Recommendation to Give Recognition for Kanenelu Beach Park Burial Ground Located in Ka‘a‘awa Ahupua‘a, Ko‘olaupoko District, Island of O‘ahu, TMK: (1) 5-1-013:011.**
- O. Discussion Regarding an Update on the O‘ahu Island Burial Council Recommendation to Give Recognition for Two Burial Areas Located at 49-051 Johnson Rd., Hakipu‘u Ahupua‘a, Ko‘olaupoko District, Island of O‘ahu, TMK: (1) 4-9-003:002.**
- P. Discussion Regarding the Archaeological Inventory Survey for 68-617 Crozier Drive Mokulēi‘a Ahupua‘a, Waialua District, Island of O‘ahu, TMK: (1) 6-8-004:005.**

VI. ANNOUNCEMENTS

- A. The Next OIBC Meeting is Scheduled for Wednesday, January 14, 2026, 10:00 A.M., at the Department of Land and Natural Resources, Kalanimoku Building, Board Room #132, 1151 Punchbowl St., Honolulu, HI 96813.**

VII. ADJOURNMENT

To provide written testimony:

We encourage interested persons to submit written testimony in advance of the meeting, which will be distributed to Council members prior to the meeting and allow a timely review. Please submit written testimony to: Traven.apiki@hawaii.gov. Written testimony may also be mailed to: State Historic Preservation Division, Kakuhihewa Building, Attn: O'ahu Island Burial Council; Suite #555; Kapolei, HI 96707. Written testimony may be posted to the SHPD's IBC meeting website; as a precaution, please be mindful with any personal information prior to submitting unless you intend it to be shared. Late written testimony will be retained as part of the administrative record and distributed to OIBC members accordingly, but we cannot ensure the OIBC will receive it in sufficient time to review, prior to decision-making.

To provide in-person oral testimony:

Attend the meeting in person: address, date, and time are on the meeting notice and at the top of the agenda.

We kindly ask that all oral testimony be limited to not more than three (3) minutes. We ask that you identify yourself and any affiliation before speaking, but you can choose not to do so.

Pursuant to HRS § 92-3, all interested persons shall be afforded the opportunity to present oral testimony or submit data, views, or arguments, in writing, on any agenda item. Public testimony for items listed on the agenda is strongly recommended to be limited to three minutes per agenda item. We ask that you identify yourself and any affiliation before speaking, but you can choose not to do so.

Pursuant to HRS § 6E-43.5(e), the council may hold a closed meeting if the location and description of a burial site is under consideration.

The OIBC may go into Executive Session pursuant to HRS § 92-5(a)(4) to consult with its attorney on questions and issues pertaining to the Council's powers, duties, privileges, immunities, and liabilities.

It is strongly recommended that any member of the public who requests for an item to be placed on a burial council meeting agenda must make this request with the Burial Sites Program staff at least two weeks preceding the scheduled meeting date. This request shall be accompanied by all related documents. Failure to comply with this procedure may delay the item to the following month's agenda.

Materials related to items on the agenda are available for review at the State Historic Preservation Division in room 555 of the Kakuhihewa Building located at 601 Kamokila Boulevard, Kapolei, Hawaii 96707.

If you need an auxiliary aid/service or other accommodation due to a disability, please contact: Traven Apiki, Burial Sites Specialist, at (808) 829-9322 or traven.apiki@hawaii.gov as soon as possible. Requests made as early as possible have a greater likelihood of being fulfilled. Upon request, this agenda and other materials are available in alternate/accessible formats.

JOSH GREEN, M.D.
GOVERNOR | KE KIA'ĀINA

SYLVIA LUKE
LIEUTENANT GOVERNOR | KA HOPE KIA'ĀINA



**STATE OF HAWAII | KA MOKU'ĀINA 'O HAWAII'
DEPARTMENT OF LAND AND NATURAL RESOURCES
KA 'OIHANA KUMUWAIWAI 'ĀINA**

STATE HISTORIC PRESERVATION DIVISION
KAKUHIHEWA BUILDING
601 KAMOKILA BLVD., STE 555
KAPOLEI, HAWAII 96707

DAWN N.S. CHANG
CHAIRPERSON
BOARD OF LAND AND NATURAL RESOURCES
COMMISSION ON WATER RESOURCE
MANAGEMENT

RYAN K.P. KANAKA'OLE
FIRST DEPUTY

CIARA W.K. KAHAHANE
DEPUTY DIRECTOR - WATER

AQUATIC RESOURCES
BOATING AND OCEAN RECREATION
BUREAU OF CONVEYANCES
COMMISSION ON WATER RESOURCE
MANAGEMENT
CONSERVATION AND COASTAL LANDS
CONSERVATION AND RESOURCES
ENFORCEMENT
ENGINEERING
FORESTRY AND WILDLIFE
HISTORIC PRESERVATION
KAHOOLAWE ISLAND RESERVE COMMISSION
LAND
STATE PARKS

**DRAFT AGENDA
O'AHU ISLAND BURIAL COUNCIL**

DATE: Wednesday, November 12, 2025
TIME: 10:00 AM (HST)
PLACE: Department of Land and Natural Resources
Kalanimoku Building
Board Room #132
1151 Punchbowl St.
Honolulu, HI 96813
—AND—
Online via Zoom

This meeting will be held using interactive conference technology under section 92-3.7, Hawaii Revised Statutes (HRS). Board members, staff, applicants, testifiers, and the public can choose to participate in person, online via Zoom, or by telephone at +1 699 900 9128.

To Attend/Provide Testimony via Zoom:

<https://zoom.us/j/95933374672>

Meeting ID: 959 3337 4672
Passcode: 5WbmCu

*** Recording Available at <https://dlnr.hawaii.gov/shpd/about/branches/ibc/meetings/> ***

OIBC Members:

Chair Caceres (Waianae), In-person
Vice-Chair Shafer (Koolauloa), In-person
Member Erhorn (), In-person
Member Ako (Kona), In-person
Member Mills (LLO), Zoom
Member Miller (Kailua), Zoom

SHPD Staff:

Traven Apiki, Burial Sites Specialist
Samantha Hemenway, Oahu Archaeologist (on Zoom)
Susan Lebo, Archeology Branch Chief

At Board Room:

Nick Belluzzo, ASM Affiliates
Matt McDermott, CSH

**Scott Belluomini, CSH
Ena Sroat, Pacific Legacy
Brittany Enandria
Jason Lee
Doug Hazelwood
Shannon Gomez
Cherish Melle
Kealohilani Wong
Kauai Fermantez
Daniel Hobner
Lehua Waianuhea
Warden Keamana
Bob Bruhl
Chris Fong
Lance Parker
Dana Harkey
Alani Apio
Dave Bouhwick**

On Zoom:

**Alani Apio
Alison
Andrea Hall
Bill Haole
Cy Harris
Kekua Norman
Kihei DeSilva
Kolealani Skye Razon-Olds
Lani
Lise Ditzel
Mapuana DeSilva
Mara Mulrooney
Moril
Nicholas Lozanoff
Andrea
Emma Keohokalole
Sarah Smith
Ronald K
Sophie C**

I. CALL TO ORDER

Chair Caceres calls meeting to order at 10:06 AM

II. ROLE CALL/PULE

Chair Caceres conducts pule

Chair Caceres, Vice-Chair Shafer, Member Mills, Member Ako, Member Miller

III. MINUTES

Recording: 1:07-3:28

A. Approval of the Minutes for October 8, 2025

Motions and vote (1:30)

MOTION: To Approve the October 8, 2025 Minutes
MOVED BY: Vice-Chair Shafer
2ND BY: Member Ako
VOTE: Motion carried unanimously

Motions and vote (2:20)

MOTION: To Add Agenda Items IV. (M) Discussion Regarding Inadvertent Discovery of Unidentified Native Hawaiian Skeletal Remains at Kalae (formerly Howard Hughes Corporation Block A Project); Kaka‘ako, Honolulu Ahupua‘a, Kona District, Island of O‘ahu, TMK: (1) 2-1-056:001, V. (N) Descendancy Recognition Application of Kihei DeSilva to Native Hawaiian Skeletal Remains Located within Kailua Ahupua‘a, Ko‘olaupoko District, Island of O‘ahu, and V. (O) Descendancy Recognition Application of Mapuana DeSilva to Native Hawaiian Skeletal Remains Located within Kailua Ahupua‘a, Ko‘olaupoko District, Island of O‘ahu.
MOVED BY: Vice-Chair Shafer
2ND BY: Member Ako
VOTE: Motion carried unanimously

IV. INADVERTENT DISCOVERIES/COMMUNICATIONS

A. Discussion Regarding Inadvertent Discovery of Unidentified Native Hawaiian Skeletal Remains at Princess Ruth Keelikolani Middle School, Honolulu Ahupua‘a, District, Oahu, TMK: (1) 2-1-009:001, 002, and 003 (por.).

Recording: 3:28-4:00

Chair Caceres recuses himself

- No update

B. Discussion Regarding Inadvertent Discovery of Unidentified Native Hawaiian Skeletal Remains at 4561 Aukai Avenue, Waikīkī, Ahupua‘a, Kona District, Island of O‘ahu. TMK: (1) 3-5-004:020.

Recording: 4:00-4:57

- No update

C. Discussion Regarding Inadvertent Discovery of Unidentified Native Hawaiian Skeletal Remains at 5799 Kalanianaʻole Hwy, Waikīkī Ahupuaʻa, Kona District, Oʻahu, TMK: (1) 3-7-002:005.

Recording: 4:57-6:33

- Member Erhorn-Would like to know where along the corridor this burial is. There was a burial site on Kalanianaʻole years ago.
- Member Ako-Is this different from last month? There could be things in the minutes about this.

D. Discussion Regarding Inadvertent Discoveries of Unidentified Native Hawaiian Skeletal Remains at Ālia at 888 Ala Moana Blvd., Honolulu Ahupuaʻa, Kona District, Island of Oʻahu, TMK: (1) 2-1-056:017.

Recording: 6:33-10:55

- Member Erhorn-Is this the same we've had issues with the last few months?
- Traven Apiki-At 2:20pm on Monday an inadvertent was found during excavation of a piling cap. The recovered tibia was placed in temporary curation and a buffer was created around the site.
- Chair Caceres-Did SHPD authorize relocation of the iwi?
- Traven-I only authorized further exploration and sifting of material. The in situ iwi were left in place and the sand pile still needs to be sifted.
- Chair Caceres-Had a one on one meeting with Jordan Calpito to understand why the iwi that were meant to be preserved in place were relocated after a concrete slab was poured. In the past SHPD has only included consultation that supports decision SHPD makes but in future it will have all consultation.

E. Discussion Regarding Inadvertent Discovery of Unidentified Native Hawaiian Skeletal Remains at Turtle Bay Resort; ʻŌʻio 1, Ulupehupehu, and Punalau Ahupuaʻa; Koʻolaupua District, Island of Oʻahu, TMKs: (1) 5-7-001:050.

Recording: 10:55-12:32

- Nick Belluzzo-Finished 100% hand excavation for all remaining ground disturbance. Site number request has been submitted. Determination not received from SHPD yet because all iwi are going to be preserved in place and the areas they are being preserved need to be finished with concrete vaults. Excavation of footprint of those installations still needs to be done. Will report back when SHPD approves.

F. Discussion Regarding Inadvertent Discovery of Unidentified Native Hawaiian Skeletal Remains at Laniākea during Kamehameha Highway Drainage and Safety Improvements Project, HDOT, Kuikuiloloa Ahupuaʻa, Waialua District, Island of Oʻahu, TMKs: (1) 6-1-005:023 and 024; 6-1-009:002, 004, 018, 019, 020, 021, and 022; 6-1-010:001, 002, 003, 004, 005, 006, 007, 019, and 020.

Recording: 12:32-14:33

Member Mills recuses himself

- Nick Belluzzo-During installation of storm water drain a single individual was found. KS preference is to preserve in place which requires shifting storm water drain and doing excavation of alignment in

advance to make sure no more individuals are present. KS brought a surveyor to look at redesign and plans are being pulled together for KS review. Anticipate preserving in place.

G. Discussion Regarding Inadvertent Discovery of Unidentified Native Hawaiian Skeletal Remains at 418A North Kainalu Drive, Kailua Ahupua‘a, Ko‘olaupoko District, Island of O‘ahu, TMK: (1) 4-3-025:014.

Recording: 14:33-21:15

- Nick Belluzzo-This was a pool project that proceeded without review or a monitor. Encountered 3 individuals who were originally intact burials. SHPD approved disinterment of those 3 and requested remainder of pool be excavated by hand. 3 more individuals were found. SHPD determination is the individual in the middle of the pool can be disinterred and the other two cannot. Will be meeting with Alani Apio to discuss buffers and reinterment site as well as begin disinterment.
- Chair Caceres-An adjacent property had iwi during pool excavation and its all been handled.
- Nick Belluzzo-They encountered iwi kupuna and the disturbance was much higher. Hawaiian Civic Club ended up asking for more protections for the sands from this. That project did not go to SHPD for review.
- Kihei DeSilva-Would not be in this situation if DPP had originally flagged the permit for SHPD review. Had an AIS been conducted, we wouldn't be here today.
- Member Ako-After last months meeting, SHPD approved a mitigation plan?
- Traven Apiki-Because of the erosion, I issued a determination for burial find 4 to be disinterred. The letter of determination was not send out, it was an email with our official determination and the email will be referenced in the letter.
- Nick Belluzzo-We don't have SIHP numbers yet which is needed for the letter. He provided it in email format and confirmed that it is an official determination. During the site visit, I echoed concerns for the erosion.

H. Discussion Regarding Inadvertent Discovery of Unidentified Native Hawaiian Skeletal Remains at 59-585 D Ke Iki Road, Pūpūkea Ahupua‘a, Ko‘olaupoko District, Island of O‘ahu, TMK: (1) 5-9-003:016.

Recording: 21:15-22:03

- Chair Caceres-Requests a site visit with Member Shafer

I. Discussion Regarding Inadvertent Discovery of Unidentified Native Hawaiian Skeletal Remains at Kalae (formerly Howard Hughes Corporation Block B West Project); Kaka‘ako, Honolulu Ahupua‘a, Kona District, Island of O‘ahu, TMK: (1) 2-1-001:133.

Recording: 22:03-28:00

Chair Caceres Recuses himself

- Matt McDermott-No update. Adjusting to the new regime of not having burial locations exposed on powerpoints. The handout shows Block B. 5 historical properties were found. The current project is a 40 story tower being built. Work started in July 2004. There have been 10 days where iwi have been found that have been lumped into 8 inadvertent discoveries. 6 have been treated with a letter of determination, the last 2 from 6/30 and 7/28 are pending a letter of determination. 5/28 has a letter of determination for relocation but as work progressed, the MNI went up to 5 and a burial marker was found made of coral blocks. No articulated remains associated, they've been heavily disturbed. The

other 2 pending determination, a bundle burial previously disturbed and the other is an articulated individual beneath the water table on 7/28. Burial preserve options are being explored.

- Member Erhorn-Have the descendants been involved with this?
- Matt McDermott-Once all information is gathered, the descendants are notified and have a say in the treatment. Howard Hughes has a program to support consultation.

J. Discussion Regarding Inadvertent Discoveries of Unidentified Native Hawaiian Skeletal Remains during implementation of HART HRTF City Center Archaeological Monitoring Plan, Halekauwila Street and Cooke Street; Nimitz Highway near Fort and Bishop Streets, various TMKs.

Recording: 28:00-33:07

Chair Caceres recuses himself

- Matt McDermott-Same update as given yesterday. This project has been ongoing for years. Currently 4 inadvertent discoveries pending a treatment of determination. Oldest is 12/30/24 and appears to be an intact individual. 7/9/25 discovery was previously disturbed and temporarily curated in the HART curation facility. Difficult to keep in place due to the water where they were located. 7/29/25 is previously disturbed femur fragments and secured within excavation pending determination. 7/16/25 near Nimitz highway, found some foundation remains and found disarticulated remains in the fill deposit of the foundation. Temporarily curated in the HART curation facility and awaiting treatment of determination.
- Member Erhorn-Will they be kept in place? Would like a map of burial sites
- Matt McDermott-They are looking at preserving in place the intact individual but potential relocation of the fragments.

K. Discussion Regarding Inadvertent Discovery of Unidentified Native Hawaiian Skeletal Remains at Pōka'i Bay, Wai'anae Ahupua'a, Wai'anae District, Island of O'ahu, TMK: (1) 8-6-001:007.

Recording: 33:07-34:30

- Chair Caceres-Would like Lahilahi added to next month's meeting.
- Member Erhorn-Would like a site map of where these were found.
- Chair Caceres-There were requests that specific locations not be shown to the community.

L. Discussion Regarding Updates to the State Historic Preservation Division's Revised Descendancy Claim and the State Historic Preservation Division's Application Process for Cultural Descendants.

Recording: 34:30-50:50

- Traven Apiki-Reads letter found in November 2025 OIBC Board Packet
- Chair Caceres-Why were these changes implemented?
- Traven Apiki-To help streamline the process for descendants and SHPD. Descendants won't have to repeatedly apply each time.
- Chair Caceres-To be clear, there was never a time when descendants are recognized to a project?
- Traven Apiki-Correct, that's not in the administrative rules
- Member Ako-Is burial registration and descendancy the same?

- Traven Apiki-No, they are separate. Burial registration allows for SHPD to document the site for future protections. Separately, even if someone registered the burial and was a lineal descendant, they would still have to submit a separate descendancy claim application.
- Kealohilani Wong-In the process of waiting to hear back about my descendancy application. I fall in this situation where I'm a lineal descendant and there is a DHHL owned parcel that has family burials I'm trying to get recognized for. Who would I reach out to for registering them?
- Traven Apiki-In your case, the burials are not registered. Regina should be back tomorrow from leave and I can check in on where in the process the registration and the descendancy is.
- Kealohilani Wong-This process is not in favor of the descendants and it's opposite of what I was raised with in giving the locations and genealogy of your family.
- Chair Caceres-Will provide you my email to help support you. We also have the power to add agenda items if needed.
- Member Ako-Find frustrating that we're constantly operating in someone else's world and not according to our culture. Becoming increasingly aware that as a kanaka, I can't operate as a kanaka. These processes have been developed with a western legalistic view.

M. Discussion Regarding Inadvertent Discovery of Unidentified Native Hawaiian Skeletal Remains at Launiu (formerly Howard Hughes Corporation Block A Project); Kaka'ako, Honolulu Ahupua'a, Kona District, Island of O'ahu, TMK: (1) 2-1-056:001.

Recording: 50:50-56:55

- Matt McDermott-Discovery happened on 11/7/25. There was an AIS with one iwi kupuna found that was preserved in place. This inadvertent discovery was found in a salt pan deposits. Consists of a portion of a pelvis, the investigation happened earlier this week. Was confirmed to be an isolated element that was disturbed previously when salt pans were built in the 1800's. Remains are held in place with protective measures around them. Howard Hughes has started consultation with descendants. Determination was not made yet.
- Chair Caceres-Had a site visit this morning. Only concern that I brought up was in regards to SHPD's compliance with timeline of issuing letters of determination. HH's does detailed slides that they use in consultation and doing so would put SHPD in non-compliance. Concern is that kupuna would sit in hole in the water. Tarps and plywood were placed over it. If SHPD authorizes temporary curation, they are not necessarily culturally appropriate.

V. NEW BUSINESS

A. Executive Session to Consult with OIBC's Attorney on Questions and Issues Pertaining to OIBC's Powers, Duties, Privileges, Immunities, and Liabilities with Respect to Ongoing Investigations and Alleged Violations of Chapter 6E, HRS, and its Implementing Administrative Rules, that may Involve Burial Sites and Human Remains under OIBC's Jurisdiction, Pursuant to HRS § 92-5(a)(4).

Recording: 56:55-58:10

- Chair Caceres-Was in communication with Dawn Chang. The investigation has yet to be completed. Sent an email asking for an update and haven't received one yet.

B. Descendancy Recognition Application of Carolyn Keala Norman to Native Hawaiian Skeletal Remains Located within Honolulu Ahupua'a, Kona District, Island of O'ahu.

Discussion/Determination: Discussion and determination on the Department's recommendation to recognize the applicant as a cultural descendant to previously identified Native Hawaiian skeletal remains within the above ahupua'a.

The Council may elect to go into executive session pursuant to HRS § 6E-43(e). The Council may close a meeting whenever a location or description of a Native Hawaiian burial site is under consideration. The chairperson, by a concurrence of a majority of members present at the meeting, shall be authorized to require the public to leave the meeting while the confidential matter is being discussed and reopen the meeting once the confidential matter is no longer being considered.

Recording: 58:10-1:40:13

- Chair Caceres-SHPD recommends granting cultural recognition to the applicant.
- Member Ako-Testimony was written and submitted by Kalehua Caceres. The testimony is four pages long and not sure if it can be completed within the four minute time frame. Reading this does not reflect my personal thoughts.

Reads submitted testimony available below

- Kekua Norman-Being brother of Keala, the read testimony is not true. Was present during burials when the Caceres were present. We respectfully declined to participate but were there to observe and respecting their process. The Caceres Ohana is harassing my sisters, it was seen in the burial council meeting where physical threats were made to my mother, aunties, and sister. Its recorded through past burial council meetings.
- Chair Caceres-Stop talking. Your comments should be directed to whether you support or don't support the agenda item. This agenda item isn't about any other individuals other than Keala Norman.
- Kekua Norman-I wanted to object to the testimony and make sure my voice and my family are heard.
- Chair Caceres-You can either stick to the agenda item or you're going to be muted and if you continue, you will be kicked out of the meeting. I'm telling you as chair of council, you can either voice your support for the agenda item or you will be muted for not talking on the agenda item.
- Kekua Norman-I wanted to voice my opinion based off Kalehua's testimony.
- Chair Caceres-If you'd like to respond further, I suggest you submit testimony related to an agenda item. You can then come and testify or have a board member testify on your behalf. I'm not trying to diminish what you have to say or keep you from testifying.
- Member Erhorn-When people are on zoom, they should at least have a face on the screen.
- Chair Caceres-We can have discussions on whether we'd like to continue the hybrid style. There have been zoom bombs and so cameras and mics are not enabled. Traven has to give permission.
- Vice-Chair Shafer-Disappointed Hawaiians are not working together for iwi. The families cannot be fighting, its not pono. Everyone should be on the same page. Will not vote either way on this matter.
- Chair Caceres-Not sure which way to vote. Now that application process has changed to include all iwi within an ahupuaa, I asked SHPD to send letters of determination where consultation happened with the descendants to see what they do with descendancy once granted. Commit to doing to all applicants. There are instances I will have to recuse myself. 2 primary concerns. One is a pattern of relocation. The other is the applicant has used her status to prevent SHPD, OIBC, OHA, and other descendants from taking part in the wrapping and reburial process which undermine integrity of the council's work. Recognition carries kuleana. Ulana project she recommended relocation for both. The Park at Ward Village she recommended relocation for all 5. The Park at Keaumoku she recommended relocation for all 16. Of the letters provided by SHPD and within my personal email there were 31 inadvertent discoveries and she recommended relocation for 30 of them in direct contrast to the values we express as council members.

- Member Erhorn-A few things are disturbing me about this. You're either a cultural descendant or you're not. An important role as a cultural descendant is to work with other cultural descendants. Would like to table this and have her present in person about these accusations. If she voted for relocation, that's not necessarily bad, there may be good reasons for it. Her attitude and workability with other descendants needs to be explained.
- Chair Caceres-The Ward Village inadvertent there was a reburial ceremony where I was prevented from wrapping the kupuna and doing the reburial ceremony. Our solution to Howard Hughes was for Regina to conduct the ceremony herself and Howard Hughes was told to exclude SHPD staff. It took a while for us to convince HH's to allow Regina to take part.
- Member Erhorn-No one individual should have the power to dictate who can be present
- Kekua Norman-I object to a lot of the accusations made and still support my sister in being recognized.
- Bill Haole-Do any of the revised statutes support the decision to not recognize a descendant due to lack of cooperation? I'm concerned we're setting a precedence. The discussion seems to lean to the denial of recognition because one ohana does not support another one.
- Chair Caceres-We should follow up on with the AG's office on that. My concern is not that descendants are uncooperative with others but about the exclusion. Comes down to SHPD not holding developers accountable to being open and allowing all descendants to participate. Not sure of any statutes that allow reburial ceremony to be handled by the developers.
- Member Mills-Not comfortable with denying someone descendancy because they deny other people from taking part. Sets a bad precedence.
- Member Ako-Further conflict between kanaka view and western view. There are rules on who qualifies to be recognized and who doesn't. We rely on SHPD's judgement on if they meet the criteria for descendancy. Given the situation, we have to play by those rules regardless of how people behave. Need to find another way to address the behavior that is negatively impacting the work. Don't feel the decision of recognizing someone should be based on whether their behavior is acceptable.
- Chair Caceres-To be clear, I'm ok to approve the descendancy application. I just wanted us to be clear on what we can expect from applicants and think we should do this with all applicants.
- Member Ako-I agree but we need to write that into the criteria, and right now it isn't so it can't be a factor
- Member Shafer-The precedent has already been set. We've seen the track record already of iwi being moved. It's a matter of are we going to respond to the precedent or agree with it. I'm agree with tabling it if needed.
- Member Erhorn-There are a lot of accusations made but I would like them addressed.
- Member Ako-I don't think that would be a constructive use of our time for the hakaka to occur at a council meeting in front of everybody.

Motions and vote (1:29:26)

MOTION: **To Approve Cultural Descendancy**
MOVED BY: **Member Ako**
2ND BY: **Member Mills**
VOTE: **Motion not carried [abstain: 2, aye: 4]**

- Chair Caceres-Need to have changes implemented. If we continue there will be further contested cases, further lawsuits, police reports filed, and more people being prevented from participating.
- Member Ako-Hopefully minutes will reflect there were concerns about behavior. Someone needs to put their foot down in how the developers represent themselves and their actions. What enables a developer to determine who can take part in a reburial. I see some pick and choose which consultants take part. We say that as a council to SHPD otherwise it'll just continue.

- Chair Caceres-With next steps, will be reaching out to SHPD about who has inclusion and exclusion for wrapping of iwi and reburial process. There is nothing legally that says what descendants have a say in.

C. Descendancy Recognition Application of Cara K. Rabang to Native Hawaiian Skeletal Remains Located within Honolulu Ahupua‘a, Kona District, Island of O‘ahu.

Discussion/Determination: Discussion and determination on the Department’s recommendation to recognize the applicant as a cultural descendant to previously identified Native Hawaiian skeletal remains within the above ahupua‘a.

The Council may elect to go into executive session pursuant to HRS § 6E-43(e). The Council may close a meeting whenever a location or description of a Native Hawaiian burial site is under consideration. The chairperson, by a concurrence of a majority of members present at the meeting, shall be authorized to require the public to leave the meeting while the confidential matter is being discussed and reopen the meeting once the confidential matter is no longer being considered.

Recording: 1:40:13-1:43:24

Motions and vote (1:40:30)

- Vice-Chair Shafer-Is she part of the Norman Ohana?
- Kekua Norman-She is my niece and I support it.
- Chair Caceres-In the letters of determinations, she didn’t provide any consultation. Unclear how involved the applicant is in the process and how she uses her status as a descendant.
- Kekua Norman-She is our young niece and has participated in other burials. At least 2 that I know of
- Chair Caceres-Mahalo Kekua

MOTION: To Approve Cultural Descendancy

MOVED BY: Member Erhorn

2ND BY: Member Ako

VOTE: Motion carried unanimously

D. Descendancy Recognition Application of Carolyn Keala Norman to Native Hawaiian Skeletal Remains Located within Waikīkī Ahupua‘a, Kona District, Island of O‘ahu.

Discussion/Determination: Discussion and determination on the Department’s recommendation to recognize the applicant as a cultural descendant to previously identified Native Hawaiian skeletal remains within the above ahupua‘a.

The Council may elect to go into executive session pursuant to HRS § 6E-43(e). The Council may close a meeting whenever a location or description of a Native Hawaiian burial site is under consideration. The chairperson, by a concurrence of a majority of members present at the meeting, shall be authorized to require the public to leave the meeting while the confidential matter is being discussed and reopen the meeting once the confidential matter is no longer being considered.

Recording: 1:43:24-1:44:17

Motions and vote (1:43:40)

MOTION: To Approve Cultural Descendancy
MOVED BY: Member Erhorn
2ND BY: Member Ako
VOTE: Motion carried (abstain: 1, aye: 5)

E. Descendancy Recognition Application of Cara K. Rabang to Native Hawaiian Skeletal Remains Located within Waikiki Ahupua'a, Kona District, Island of O'ahu.

Discussion/Determination: Discussion and determination on the Department's recommendation to recognize the applicant as a cultural descendant to previously identified Native Hawaiian skeletal remains within the above ahupua'a.

The Council may elect to go into executive session pursuant to HRS § 6E-43(e). The Council may close a meeting whenever a location or description of a Native Hawaiian burial site is under consideration. The chairperson, by a concurrence of a majority of members present at the meeting, shall be authorized to require the public to leave the meeting while the confidential matter is being discussed and reopen the meeting once the confidential matter is no longer being considered.

Recording: 1:44:17-1:45:12

Motions and vote (1:44:20)

MOTION: To Approve Cultural Descendancy
MOVED BY: Member Erhorn
2ND BY: Member Ako
VOTE: Motion carried unanimously

F. Discussion Regarding Implementation of the Burial Treatment Plan for Iwi Kūpuna at Kawaiaha'o Church Multi-Purpose Center/Building Project, Honolulu Ahupua'a, Kona District, Island of O'ahu, TMK: (1) 2-1-032:017.

Recording: 1:45:12-2:04:22

- Suzanne Boatman-Demolition project will be completed by Friday. Still tracking on grading permit. Hawaiian dredging is touching base several times a week for company providing base material. Once grading permit is received, they will bring enough fill material to execute the kanu. My understanding is the grading permit is close to being signed off on, hoping to start first week of Decemeber. Had a meeting with descendants on the 8th. Church requested the Caceres Ohana take charge of the burial ceremony. Kalehua addressed everyone present and will communicate directly with recognized descendants. Custodians of the iwi kupuna will work directly with Kalehua. Our protocol requires there are two people present when there is a change of custody of the iwi. Next phase is logistics of sizing of wooden boxes led by Mana Caceres
- Vice-Chair Shafer-Mahalo for reaching out for help and getting the help needed.
- Member Ako-Is the intention to include anyone that wants to be included in ceremonial things or anyone with descendancy to the iwi? I see this as an opportunity for healing within the kaiaulu. There are people within the church that need to experience healing and want to encourage anyone that wants to be there to be present. There are other Hawaiian churches whose members are feeling eha and if they want to be present, they should be allowed to be there.

- Suzanne Boatman-Church would love to be involved with it but that is appropriate for Kalehua to answer. From my experience with Kalehua, she has been very inclusive. After iwi are in the ground and ceremony is complete, the church will hold a Christian funeral for them. It will take multiple nights, we can coordinate among us who is present.
- Chair Caceres-Do hope OIBC members, especially those involved with the BTP, can be involved.
- Suzanne Boatman-There are 16 sections, and each section will have a night but we might be able to have multiple sections in a night depending on the number of iwi. Will insert in our recommendation that its our wish to include OIBC and members of other church communities.
- Member Ako-We have to worry about sunshine law? What if I as a private citizen that was baptized as Kawaiahao Church want to come, am I being barred from being there?
- Chair Caceres-My understanding if there are three or more of us together it would be considered a meeting and we'd have to post it online. Happy to only attend on nights my kupuna are being kanu'd.
- Member Miller-This is related to how things are done in terms of the reburial of iwi and goes to the processes that need to be included in SHPD. The issue before this wasn't about the genealogy but the how of things are done. Implementing proper protocol is to make sure we're in compliance of the law. Not sure if there is an exclusion where if we're attending if we'd be able to do so.
- Chair Caceres-Can check with the AG's office about how we could go about all attending.
- Traven Apiki-Can create a special task force for multiple members to go out. Another way around of it is that if more than two people meet, burial matters cannot be discussed.
- Chair Caceres-To create a task force would it be agendized and voted on?
- Traven Apiki-It's relevant to this agenda item and can be moved to do so now.
- Suzanne Boatman-Can discuss OIBC members attending prior to December's meeting. Goal is to have iwi in the ground before end of 2025. Don't know if I can meet that metric and depends on whether we get the grading permit. Worst case scenario is we size the box based off the lauhala baskets we have and the night of the kanu we cant fit them. Instead I want to size everything and stage them prior to the boxes being made. Will include in the letter that all parties participation is anticipated.

Motions and vote (2:02:15)

MOTION: To Approve A Permitted Interaction Group for Kawaiahao Church
MOVED BY: Vice-Chair Shafer
2ND BY: Member Miller
VOTE: Motion carried unanimously

Motions and vote (2:03:20)

MOTION: To Appoint Member Mills, Chair Shafer, Vice-Chair Shafer, Member Ako, and Member Miller, To Task Force
MOVED BY: Member Erhorn
2ND BY: Member Ako
VOTE: Motion carried unanimously

5 minute break

G. Discussion Regarding Archaeological Inventory Survey and DRAFT Burial Treatment Plan for Native Hawaiian Skeletal Remains – Iwi Kupuna – at the Waikīkī Aquarium, Waikīkī Ahupua‘a, Kona District, Island of O‘ahu, TMK: (1) 3-1-031:006 .

Recording: 2:04:50-2:36:06

- Doug Hazelwood- After discovery of iwi kupuna during AIS, his company has been retained to develop burial treatment plan and wastewater treatment system. Received requests from descendants to provide temporary removal and curation of some iwi kupuna discovered. AIS is being developed concurrently with construction project. 5 separate human skeletal remain locations have been discovered. All have been preserved in place under temporary measures. Excavation is expected to end in February. UH is consulting with 13 descendants. Only 10 have been recognized thus far by the council. 2 in person meetings (with virtual attendance) have been held with all 13 descendants. All have so far concurred with recommendations. AIS is expected to be finished by March 2026. Hope to meet OIBC for approval of a BTP by May. Descendants are satisfied with procedures, have made recommendations of preservation in place for two burials. Have requested that the remains found in the three other locations be collected and placed in a new crypt near one of the other two burials. They do not want surface markers for burials, minimization of foot traffic, a record made of burials with metes and bounds survey. They have also requested that UH provide temporary curation of fragmentary remains found until a new crypt is made and the BTP is finalized. PCSI's Honolulu laboratory has been offered as a secure location for temporary curation. Seeks OIBC's guidance.
- Member Erhorn- has no problem with the proposal.
- Chair Caceres- Asked how many descendants requested the relocation and which ones.
- Doug Hazelwood- Trisha Watson brought the subject up in the 2nd consultation meeting. The other descendants were advised about the proposal and all 13 agreed.
- Chair Caceres- Asked about the procedures about making a determination on this because of how it is agendized.
- Traven Apiki – affirmed that it will need to be decided in next months meeting.
- Vice-Chair Shafer -Decision making is not on the agenda right now, only discussion. We need to make sure to agendize things properly to not waste peoples time.
- Member Erhorn- Asked Doug Hazelwood about the depth of the injection well mentioned in notes given to the council.
- Doug Hazelwood- Affirmed that the well is 250 feet deep for fish waste.
- Member Miller-Would like a list of descendants that have been consulted and their stance
- Doug Hazelwood- Asked if Member Miller wants a written plan regarding temporary removal and curation.
- Member Miller- Yes
- Member Ako- Brought up that Kehau Watson's recognition to these burials was deferred and was supposed to be on the current agenda.
- Chair Caceres- She has requested multiple times to have her application deferred.
- Member Ako-Expressed concern that she has not been formally recognized yet.
- Chair Caceres- Asks Traven Apiki if there has been formal communication from Kehau Watson this month.
- Member Ako-Is concerned that she is not yet recognized but is a major factor in the decisions being made for the iwi kupuna.
- Chair Caceres-Will follow up with SHPD regarding her recognition. Is also not in favor of curation units in general. Asks Doug Hazelwood how far the laboratory is from the construction site.
- Doug Hazelwood- Gives location of the laboratory, about 6 or 7 miles.
- Chair Caceres- Feels that is distant and there are other ways to protect the iwi kupuna. Asks what other procedures have been considered.

- Doug Hazelwood- Feels that they are secure, though are mostly still in open trenches. Iwi have been wrapped and covered. It will however be 8 months before a BTP can be completed and implemented. Is considering the possibility of temporarily curating on site in a facility owned by the Aquarium.
- Chair Caceres- Asks that other options are explored for their consideration on this topic for next months agenda.
- Shannon Gomez- Mentions that some iwi are in a sand wall. Fragments are about 5 feet deep. There is shoring surrounding the excavation itself.
- Chair Caceres- Expressed desire to make a site visit.
- Doug Hazelwood- Agrees to the idea. Asks if another option might be to create a temporary crypt pending the approval of the BTP.
- Chair Caceres- Is in favor of keeping the iwi near their discovery location in general.
- Doug Hazelwood- Descendants have requested the removal of the fragmentary remains.
- Member Erhorn- Asks why they are fragmentary
- Chair Caceres- Asks what kinds of bones were found.
- Doug Hazelwood- Area is mostly sand. Ankle and foot bones of an adult were found in one location. Another location had adult cervical vertebrae, three cranial fragments.
- Chair Caceres- Asks how remains were wrapped.
- Shannon Gomez- Remains from each site were respectively wrapped together.
- Doug Hazelwood- Most iwi were obtained from screening.
- Member Erhorn- Asks how big the crypt was that was discovered.
- Doug Hazelwood- They have photos they could share in executive session. Made from stacked concrete blocks. 2 blocks deep, 2 blocks high, and 3 blocks long. About 4 feet. Contains long bones and a cranial fragment. Unsure of how many individuals. Did not examine remains. Just identified and resealed.
- Susan Lebo- Asks if they have considered realignment so that the iwi may be kept in place.
- Doug Hazelwood- Project has been realigned to keep iwi in place. 3 design changes were made to avoid them.
- Susan Lebo- Asks how they can be secured in the interim so that when the full installation is made they can still be there.
- Chair Caceres- In his own previous experience he recommends more permanent interim measures that become long term measures in the burial treatment plan. Recommends discussing that with descendants.
- Susan Lebo- Original AIS strategy was to redesign to allow iwi to remain in place.
- Member Ako- Asks for further clarification about what that might look like. Recently learned about the concept of a 5 sided vault vs a 6 sided vault, and that vaults are different from crypts. Wants a better understanding of what a crypt looks like.
- Doug Hazelwood- Describes the concrete block crypt they examined. Does not know if it has a bottom but it has a lid.
- Shannon Gomez- Thinks that it may not have had a bottom.
- Doug Hazelwood- It looks like it may have been created during a previous construction project. The Iwi were consolidated and interred, but there is no record of such a thing happening.
- Chair Caceres- Reiterates the desire to do a site visit and to inform descendants about the possibility of more permanent temporary measures.
- Doug Hazelwood- one reason why temporary removal was considered was because iwi were becoming wet, and they wanted them to dry them out.

H. Discussion Regarding Previously Identified Iwi Kupuna (SIHP 50-80-14-10218) identified during an Archaeological Inventory Survey for the Demolition and Construction of a New 2-

Story SFD Project at 3037 Kalakaua Avenue, Waikīkī Ahupua‘a, Kona Moku, O‘ahu [TMK: (1) 3-1-033:006].

Recording: 2:36:16-2:37:40

- Ena Sroat- No update other than consultation is currently active. Would like to stay on the agenda for December
- Chair Caceres- Asks if there is a timeline on the completion of consultation.
- Ena Sroat- Unable to say right now.

I. Discussion Regarding Archaeological Inventory Survey for the Rehabilitation of Chamber Level Waterproofing and Related Improvements Project, Phase 3 (DAGS Job No. 12-10-1004, 12-10-1045, 12-10-1046) at the Hawai‘i State Capitol Building located at 415 S. Beretania Street, Honolulu Ahupua‘a, Kona District, Island of O‘ahu TMK: (1) 2-1-024:015 and (1) 2-1-024:016.

Recording: 2:37:42-2:39:12

- Ena Sroat- No updates other than current testing strategy has been submitted to SHPD. The project is planned for May next year. There is extensive ground disturbance and so we presented 100% AIS testing strategy for anything over a foot deep.
- Member Erhorn- Asks why an AIS was required.
- Ena Sroat- There is extensive ground disturbance.

J. Discussion Regarding Ongoing Documentation and Recovery Efforts at Kauloa Regional Beach Park, Kualoa I Ahupua‘a, Ko‘olaupoko Moku, Island of O‘ahu, TMK: (1) 4-9-004:001.

Recording: 2:39:13-2:41:00

- Ena Sroat-No updates at this time.
- Member Erhorn- Asked if this is a new project, and if Pacific Legacy is aware of a crypt in the forest nearby.
- Ena Sroat- Yes they are aware.
- Member Erhorn- Will the crypt be utilized for the iwi?
- Ena Sroat-There are iwi kupuna that are currently being temporarily curated on site but the crypt you’re mentioning is for SHPD to decide.
- Vice-Chair Shafer- Expressed an interest in being a part of future work on this project.

K. Discussion Regarding Mokapu Memorial Project at Kane‘ohe Marine Corps Base, Kane‘ohe Ahupua‘a, Ko‘olaupoko Moku, Island of O‘ahu, TMK: (1) 4-4-008:001.

Discussion/Determination: Discussion and determination on a resolution of support for the above agenda item.

Recording: 2:41:01-2:52:44

- Chair Caceres- Had questions regarding the timeline of the project. When do they plan on beginning the new inventory of iwi kupuna housed there, and how long do they think it will take?
- Kolealani Skye Razon-Olds- It depends on when the federal government shutdown ends. Most likely, inventory will begin in January and the inventory process may take 3 months to do. The federal shutdown may however push back the timeline. Funding is earmarked for 2026.

- Chair Caceres- Asked how many people will participate in creating the inventory?
- Kolealani Skye Razon-Olds- Probably not everyone on the project will be involved in the inventory. She has spreadsheets linked to different books and studies that will assist in making sure that every item is accounted for. If she can get all claimants up to speed on the platform, probably only five people will be needed to complete the inventory.
- Chair Caceres- Asked for a summary of the letter provided to the OIBC that requests their approval.
- Kolealani Skye Razon-Olds- As a formalized NAGPRA claimant the OIBC is able to sign on to this. We have in the past has issues where we do not have OIBC or OHA signatures, which demonstrates to the Marine Corp Base that we do not have a unified front, which is not true. We want you to support where we are now. We have funding, military approval and are talking to claimants. That would strengthen our case. Also trying to get on the OIBC agenda and getting signature for each part of this process is lengthening the timeline. Claimants would like OIBC to stay on as advisors. This would help speed up the process.
- Chair Caceres- Regarding the first letter affirming support of the plan are there questions?
- Vice-Chair Shafer- Does the AG need to also sign off on this letter?
- Chair Caceres- Only OIBC needs to because they are the federal claimant.

Motions and vote (2:46:11)

MOTION: **To Approve the Letter of Support**
MOVED BY: **Vice-Chair Shafer**
2ND BY: **Member Erhorn**
VOTE: **Motion carried unanimously**

- Chair Caceres- Regarding the second letter, he is hesitant to sign because he doesn't know the original OIBC's intentions with being a claimant. Also unsure how this will impact future OIBC boards ability to step down as claimants and assume a role as advisors in the process.
- Vice-Chair Shafer- Halealoha brought this up before and reminded the OIBC about kuleana on this.
- Member Erhorn- Was on the board when OIBC decided to become members. Somehow membership dropped over the years and they stopped attending. Believes that everyone on the original board felt as they all do now in supporting the effort.
- Kolealani Skye Razon-Olds- has a scanned copy of minutes from when the original OIBC joined and thinks the original intention was to be able to provide a space for community who did not get on the NAGPRA list to step forward and engage with the claimants. So the group wants the OIBC opinions and advice on the project. The biggest concern is however the time delays.
- Member Ako- Feels cautious since there are people who have been involved with Mokapu in the past that are not involved today. Wonders if there is a reason why some people might not want to do this.
- Member Miller- Agrees with Chair Caceres' thoughts. Supports whatever needs to get done.
- Vice-Chair Shafer- Feels it is about time we are moving forward on this project. Thanks Kolealani for her work.
- Member Erhorn- Concurs with Vice-Chair Shafer's thoughts.
- Member Ako- Wonders why we are deciding on this again if a previous board has already opined on this?
- Vice-Chair Shafer- What they are doing is giving us an update on what is happening now, which we need.

Motions and vote (2:51:29)

MOTION: To Approve the 2nd Letter of Support
MOVED BY: Vice-Chair Shafer
2ND BY: Member Erhorn
VOTE: Motion carried unanimously

L. Discussion Regarding Pali Lanes Adaptive Reuse Project, Kailua Ahupua'a, Ko'olaupoko District, O'ahu, TMKs (1) 4-2-038:020 and portions of 015, 034, and 045.

Recording: 2:52:45-3:42:15

- Lance Parker- Apologizes to council and descendants for disturbing iwi. Has collaborated on the project since 2013. AIS was done in advance of plans for development. No specific plan for project timelines to share today.
- Alani Apio- In 2005 former president of Kaneohe ranch asked him to help with a burial discovery. One of the outcomes of that project was the creation of the group Kailua Kau a Hooilo led by Mapuana and Kihei DeSilva. He has worked with that group on many Kailua projects since then. Eventually the Ranch sold the properties to Alexander and Baldwin, who has continued working with him and this group. He is working as a consultant, but also represents Na Iwi Kupuna, Kailua Kau a Hooilo and his family. Kailua Kau a Hooilo has held A&B accountable to iwi kupuna. A&B has been provided archaeological services voluntarily for various projects to do monitoring.
- Member Erhorn- Asks about Alani Apio's relationship to Cultural Surveys Hawai'i.
- Alani Apio- Does not work for that group. Brittany works for Cultural Surveys Hawai'i.
- Brittany Enanoria- CSH was hired by A&B to complete the AIS for this project. Presents photographs and maps of project area. Presents history of project area. Kaneohe ranch formerly owned it. Campos Dairy operated in vicinity. Pali Lanes was built in 1960s. Presented project timeline for AIS. Includes meetings with cultural descendants and AIS testing strategy. Presented map of AIS testing strategy. Limited interior AIS testing done. Presented photographs of test pits. After field work ended found human skeletal remains in field sample from an exterior trench. Iwi were from 2 infants. No moepu identified. SHPD and Kailua Kau a Hooilo were notified. Iwi were wrapped in muslin and temporarily curated at CSH Oahu office. No additional findings.
- Alani Apio- A&B is modifying plans based on these findings. Removed planned utilities and removed area from current project.
- Brittany Enanoria- A&B will preserve the iwi in trench 3 in place. Parking lot will be modified to prevent pedestrian traffic over burial site. Will continue consultation with descendants. Area is no longer in project scope. Trenching and underground utilities removed from plans. Storm drain removed from plans in that area as well. Fire service water line will be relocated. A&B has shared proposed modifications with descendants who are supportive of the changes. They are reaching out to OHA. Burial notices will be placed in newspapers. Will submit AIS to SHPD for review. Preparing BTP per consultation efforts.
- Member Erhorn- Did you show on your strategy the locations of ditches that you will be exploring?
- Alani Apio- What do you mean by ditches?
- Member Erhorn- Test trenches. Did you show test trenches on your strategy map?
- Brittany Enanoria- Yes I forgot to mention that. It was overlayed on a utility plan. Shows map depicting trenches.
- Member Erhorn- I understand that you will preserve the building and put it to another use?
- Lance Parker- That is the intention. They don't have specific plans right now. Building is on the state historic register. Wants to maintain as much of the architectural integrity as possible, which is part of why they choose particular locations for the test trenches. They had ideas of building a small building in the parking lot, but given the findings of the AIS that's no longer in plans.

- Member Erhorn- Was curious about the blue line (on the map) that goes through the parking garage. Was that being removed from the project?
- Lance Parker- The blue line on that map is just showing the general project area. The top portion does show the parking garage. They have considered developing that area.
- Member Erhorn- So possibly in the future that parking garage could be torn down?
- Lance Parker- No it would not be torn down.
- Alani Apio- In that area, the first level (surface level) of the garage is open. There's parking there now. It is used for night markets, shows, and presentations now as well.
- Chair Caceres- Praises the team on this project. Regarding the iwi that were identified in the laboratory, were they identified in the field by a single osteologist or was there another second opinion taken in the field before they were collected?
- Brittany Enanoria- The iwi weren't collected in the field. We didn't know about them until we got back.
- Alani Apio- It wasn't identified in the field.
- Chair Caceres- Oh so it was identified when screening through the sample.
- Brittany Enanoria- We missed it and found it when we were more meticulously going through things in the lab.
- Chair Caceres- Agrees that makes sense. If the descendants are okay with iwi being curated at the CSH office then he is okay with it. Acknowledges that Kihei DeSilva wants to speak.
- Kihei DeSilva- The curation of those fragments was not an easy decision to make. They are still weighing the length of time and circumstances. What motivated them to allow curation at CSH was a trust in the company. Also tried to consider how much handling is detrimental to the iwi. Did not want to handle the iwi too much. Also feeling fatigue since they have been curating remains in their own home for three months. Did not feel they could assume more responsibility of iwi at home. Acknowledges that it is better to keep the iwi close to where they came from. A&B has a bad reputation in many places, but appreciates their transparency in this work.
- Member Ako- Puzzled by the unusual circumstances of this project. More often people buy a property to develop it for money. The way A&B has handled this is unusual.
- Lance Parker- A&B has many properties in the area. They can afford to be more wholistic in their perspective in this area because of this. This property was purchased as part of a portfolio. At the time Pali Lanes was operational, and they questioned its feasibility. Eventually they closed. They have been able to think of things other than the economic returns. They are a publicly traded company, but in this circumstance they can afford a higher level approach. He has different authority over this project than other projects he has been a part of in the past.
- Member Erhorn- Praises the proactive approach to this project.
- Member Miller- Asks for affirmation that the iwi were only found in Trench 3 (is affirmed).

M. Discussion Regarding Addendum Archaeological Inventory Survey in Support of the Kīhāpai Place Development Project, Kailua Ahupua‘a, Ko‘olaupoko District, Island of O‘ahu TMK: (1) 4-3-058:065 and 066.

Recording: 3:42:37-4:32:10

- Alani Apio- Explains he is also contracted on this project under a different company.
- Chris Fong- Acknowledges that representatives of the landowner, the city and county of Honolulu is online for this meeting as well.
- Alani Apio- Kailua Kau a Hooilo has also been a part of this project in a similar way to their involvement in the last agenda item. Mapuana and Kihei DeSilva are also online for this meeting.

- Bob Bruhl- Introduces himself. President of Tradewinds Capital. Explains some history he has had working together with Alani. Construction on this particular project was started previously. The City is now coming in and trying to fix it. Two finds of iwi kupuna were made during the original project.
- Alani Apio- Descendants were informed at that time. The original landowner went bankrupt before they could finish the project. The burial sites were left in limbo, though they are physically protected. They have placed the burials deep in a trench where they came from.
- Bob Bruhl- The property was put up for sale and nobody bought it because there were inherent challenges. There are other challenges inherent to the property. The city then stepped in. They want to build affordable housing on the property. Asks Chris to give further background. Apologizes that archaeologists were not able to attend the meeting.
- Alani Apio- They hope to be on the December OIBC agenda with the archaeologists. Their purpose at this meeting is just to give the council a high level update.
- Bob Bruhl- The aim is to get resolution of what is proper for the site.
- Chris Fong- Provides background location and details for the project. Three story housing project. Will be developed and operated by Tradewinds Capital for 75 years. City obtained property in 2023, still in planning phase.
- Alani Apio- The reason why they came before the council is because during post-AIS trenching work International Archaeology, the contractor found two teeth, from two separate trenches. They are currently developing a draft burial treatment plan. When that is finished they will present again. They are close nailing down specifics.
- Member Erhorn- Asked for affirmation that no construction has yet occurred.
- Alani Apio- Affirms that no construction has yet occurred.
- Bob Bruhl- There was previous construction done by the original landowner. A retaining wall and earth work.
- Member Erhorn- Asks if they are starting again from scratch.
- Bob Bruhl- Affirms that they are starting from scratch.
- Member Erhorn- Asks if there is an architect working on the project.
- Bob Bruhl- Affirms that there is an architect.
- Member Erhorn- Asks who the archeology firm is.
- Alani Apio- International Archaeology.
- Member Erhorn- So they did the first work?
- Alani Apio- No they didnt. Cultural Surveys did. There have been three separate companies that have worked on the project.
- Chair Caceres- Asks Susan Lebo if the work by International Archaeology was done after the RFP was accepted and this new land owner took over.
- Susan Lebo- Affirms that statement. Says that there were two previous archaeological studies done prior to this. The first firms work had issues and was not finished. The second firm was hired to complete the AIS for the original project, which was Cultural Surveys Hawaii. Now theres a new development and they are doing what is called an addendum AIS to collect more information.
- Chair Caceres- Asks if previous burials were found in the first two AIS reports.
- Susan Lebo- In the first report iwi were found.
- Chair Caceres- Was that BTP accepted?
- Susan Lebo- Unsure of the status of the BTP, but the iwi kupuna are preserved in place.
- Alani Apio- The history of the parcel is complex. To date there have been three developers. The initial project was by a company called Green Waters. They hired a firm for which Nancy McMahon was the lead archaeologist. She didnt follow the AIS strategy and impacted a burial during that AIS. SHPD then required a redo of the AIS because it wasnt done properly. The owners at the time hired cultural surveys Hawai'i to take over and redo the work. The initial AIS was completed, reviewed and approved. That development group then began work on the property without consultation with

descendants. There was monitoring. Another burial was found in the construction of the retaining wall on the property.

- Susan Lebo- Clarifies that it was an inadvertant find, the iwi were not found during the AIS. The second burial was an inadvertant find, the first was previously identified, and the third found during the current work is previously identified.
- Chair Caceres- That second burial has gone through consultation? A letter of determination was issued? Has it gone through the process?
- Susan Lebo- Does not know if a BSC was made, thats not under her purview.
- Chair Caceres- Asks Traven Apiki to make a note for follow up.
- Alani Apio- Asks Susan Lebo to clarify.
- Susan Lebo- The second iwi that was found during monitoring was preserved in place by SHPD. She does not know if the process of creating a burial site component or preservation plan has been completed.
- Alani Apio- Says he doubts that it ever happened because the descendants would have been informed at some point, and they were not. The initial developers also went bankrupt. They sold the land to the second largest investor. That owner tried to continue the development and built the retaining wall. That developer had a poor relationship with the descendants. That developer then went bankrupt as well. Then the property sat on the market. Would like to explain the intent of Kailua Kau a Hooilo for all of the iwi that have been found so far on the property unless the DeSilvas would like to speak.
- Kihei DeSilva- They will probably propose that the niho and the second burial be reinterred with the first burial in the preserve that has already been created and that is already on the new plans for the development. The iwi kupuna on the edge of the property at the retaining wall is currently safe but they are worried about climate change and sea level rise because it is near a water canal. They didnt know what to do about the first and second burials previously after the company went bankrupt because they had no legal recourse.
- Chair Caceres- Asks if the burial found in 2019 would be disinterred and reinterred somewhere else.
- Kihei DeSilva- Affirms that this is true. They are concerned about climate change, and it is not far from the first burial.
- Julian Ako- Struggling to understand. Work has not begun on the project, but two niho have already been found. He thinks it is highly probable that more iwi will be found. The coucil will probably be presented a burial treatment plan for what is already known, and then subsequently anything else found is an inadvertant find that will received determination from SHPD. Wants to know the thoughts of the descendants about that.
- Kihei DeSilva- A complete AIS was conducted during which the iwi were discovered. They are satisfied based on that plan. They are always worried about additional iwi being found though.
- Julian Ako- Could a BTP take into consideration the possibility of discoving more iwi in the future?
- Alani Apio- Acknowledges complexity of the situation. In the initial AIS for the first project, trenches were excavated and the first iwi were found. Whatever burial was there, there was a pit feature but the burial was obliterated.
- Member Erhorn- What does obliterated mean?
- Alani Apio- Explains that the archeologist used poor methods. Explains that descendants have looked at the history of the development and parcel. The first developer created a burial preserve for the iwi. The location of the iwi is well recorded and the area is clear. The new developer is considering moving the second iwi discover to reinter. This has been put into the construction designs. Pending agreements with descendants. All iwi will be placed in the same site.
- Member Erhorn- Asks where the reinternment site is on the map (its pointed out to him)
- Alani Apio- Explains the design of the site through working with descendants.
- Bob Bruhl- Explains that he understands the concerns. Says that he feels better now understanding the history of the area better. The location of the canal is assuring because the soil quality in the parcel is good.

- Chair Caceres- Since the letter of determination is unlikely to have been issued from the second find when the retaining wall was built, and since the DeSilva's have expressed support for relocation of iwi to new location, would like to agendize this for next months meaning. When letter of determination is issued it can reflect things accordingly.
- Alani Apio- Descendants have been made aware of actions since the beginning of this new project.
- Member Erhorn- Its important to help shift thinking every opportunity the council has. We need to be respectful when we talk about development to not erase the development of the original inhabitants of the area. Today we too often think of development in modern terms. The original inhabitants developed the land in their own way.
- Chair Caceres- Asked what percentage of project area has been sampled including all AIS that have been done so far.
- Alani Apio- Clarifies that since Kailua Kau a Hooilo has become involved in 2017, there has been a consistent desire that test trenches were only made in areas proposed for development, not in other areas.
- Chair Caceres- Wants SHPD to send the previous AIS reports to him.
- Mapuana DeSilva- When they first became involved with the property, they asked that the iwi found in the wall location were left in place. As things have changed over time they have now decided that the iwi be moved to a safer place in the burial preserve.
- Susan Lebo- SHPD expects that the AIS will indicate how the design was made in concert with the descendants (where to test, how to test, etc.). The percent of coverage should be the percent of coverage within the development footprint.
- Chair Caceres- Asks about where the current AIS is in the process now (it has been submitted and is under review by SHPD). Reiterates that further discussion will happen at next months OIBC meeting.
- Member Miller- Expresses pleasure with the process so far.

N. Descendancy Recognition Application of Kihei DeSilva to Native Hawaiian Skeletal Remains Located within Kailua Ahupua'a, Ko'olaupoko District, Island of O'ahu

Recording: 4:32:12-4:36:17

- Kihei DeSilva- They have been submitting for descent for 18 years. Its good to have finally submitted the last one. Appreciates SHPDs change in policy regarding cultural descent. Understands if the policy must change back though.
- Chair Caceres- Explains that he is abstaining from this vote, though he is in support of their recognition.

Motions and vote (4:33:46)

MOTION: To Approve Cultural Descendancy
MOVED BY: Vice-Chair Shafer
2ND BY: Member Erhorn
VOTE: Motion carried unanimously among those voting (Chair Caceres abstains)

O. Descendancy Recognition Application of Mapuana DeSilva to Native Hawaiian Skeletal Remains Located within Kailua Ahupua'a, Ko'olaupoko District, Island of O'ahu.

Recording: 4:35:25-4:37:35

- Mapuana DeSilva- Concurs with what Kihei DeSilva said. Suggests that a short application might be appropriate for cultural descendancy. Appreciates all those who attended the meeting.

Motions and vote (4:37:13)

MOTION: **To Approve Cultural Descendancy**
MOVED BY: **Vice-Chair Shafer**
2ND BY: **Member Erhorn**
VOTE: **Motion carried unanimously among those voting (Chair Caceres abstains)**

VI. ANNOUNCEMENTS

- A. The Next OIBC Meeting is Scheduled for Wednesday, December 10, 2025, 10:00 A.M., at the Department of Land and Natural Resources, Kalanimoku Building, Board Room #132, 1151 Punchbowl St., Honolulu, HI 96813.**

VII. ADJOURNMENT

3:08pm

To provide written testimony:

We encourage interested persons to submit written testimony in advance of the meeting, which will be distributed to Council members prior to the meeting and allow a timely review. Please submit written testimony to: Regina.hilo@hawaii.gov. Written testimony may also be mailed to: State Historic Preservation Division, Kakuhihewa Building, Attn: Regina Hilo - Oahu Burial Sites Specialist; Suite #555; Kapolei, HI 96707. Written testimony may be posted to the SHPD's IBC meeting website; as a precaution, please be mindful with any personal information prior to submitting unless you intend it to be shared. Late written testimony will be retained as part of the administrative record and distributed to OIBC members accordingly, but we cannot ensure the OIBC will receive it in sufficient time to review, prior to decision-making.

To provide in-person oral testimony:

Attend the meeting in person: address, date, and time are on the meeting notice and at the top of the agenda.

We kindly ask that all oral testimony be limited to not more than three (3) minutes. We ask that you identify yourself and any affiliation before speaking, but you can choose not to do so.

Pursuant to Hawaii Revised Statutes (HRS) §92-3, all interested persons shall be afforded the opportunity to present oral testimony or submit data, views, or arguments, in writing, on any agenda item. Additionally, pursuant to a policy adopted by the Oahu Island Burial Council at its September 14, 2005 meeting, oral testimony for items listed on the agenda is limited to three minutes per person, per agenda item.

Pursuant to sections §92-4, §92-5(a)(8), and §6E-43.5, Hawaii Revised Statutes (HRS), and upon compliance with the procedures set forth in section 92-4, HRS, the council may go into a closed meeting to consider information that involves the location or description of a burial site.

The OIBC may go into Executive Session pursuant to HRS §92-5(a)(4) in order to consult with its attorney on questions and issues pertaining to the Council's powers, duties, privileges, immunities, and liabilities.

A request to be placed on a burial council meeting agenda must be made with the Burial Sites Program staff at least two weeks preceding the scheduled meeting date. In addition, the request must be accompanied by all related documents. Failure to comply with this procedure will delay the item to the following month's agenda.

Materials related to items on the agenda are available for review at the State Historic Preservation Division in room 555 of the Kakuhihewa Building located at 601 Kamokila Boulevard, Kapolei, Hawaii 96707.

If you need an auxiliary aid/service or other accommodation due to a disability, please contact: Regina Hilo, Burial Sites Specialist, at (808) 436-4801 or Regina.Hilo@hawaii.gov as soon as possible. Requests made as early as possible have a greater likelihood of being fulfilled. Upon request, this agenda and other materials are available in alternate/accessible formats.

Written Testimony:

My name is Brandy Kalehua Kamohalii Caceres, and I am offering my written testimony regarding Agenda Section V: New Business, Items B and D relating to cultural recognition of Carolyn Norman to the Ahupua‘a of Honolulu and Waikīkī.

While I am neither in support nor against this recognition, I would like to submit testimony regarding this applicant and her direct impact on my family’s practice of mālama iwi and ask the Board, therefore, to consider the impact of YOUR decision today on my family as practitioners. Within the past five years at least, it has been especially difficult to preserve kūpuna in place. We are cultural descendants of many projects in the moku of Kona within the span of this past 13 or so years including:

- The Park on Ke‘eaumoku (NAN) where more than 28 inadvertent kūpuna were relocated. Carolyn is noted in the letter of determination as requesting relocation more than once regarding iwi kūpuna. On the evening of reburial, she sat 50 feet or so from the reburial site at a table where snacks and drinks were provided for her comfort. She sat there with her brother and son, also cultural descendants, while my family including your current OIBC Chair, Burial Site Specialist Regina Hilo, OIBC Chair Kamana‘o Mills and close to a dozen individuals held ceremony, placed pū‘olo moe and shoveled clean sand to bury kūpuna. In my previous testimony, she is the person I referenced.
- Kamehameha Schools Kaiāulu ‘o Kaka‘ako Master Plan Increment II Electrical Infrastructure project where a neonatal pē was temporarily relocated as she was in imminent danger of impact since she was in the middle of Ala Moana Boulevard. Kamehameha Schools reached out to request my husband’s support with the disinterment of pē given his extensive field and ceremonial expertise. While our family quickly agreed to take responsibility of ceremonial care including an ‘aha mihi to both pē and her family members, Kamehameha representatives would reach out several days later to inform my husband that they received a response from a cultural descendant who insisted that we not be allowed to handle the baby. Instead, we would make good on our commitment as practitioners to the care of iwi kūpuna most especially this young infant despite someone else’s interference. We were only allowed to conduct the ‘aha mihi as well as ceremony to prepare pē and her family for the events of that day. We watched as Carolyn drove by us in her company vehicle in her company uniform while we conducted ceremony. Despite our experience and expertise, we could only provide support to Kamehameha representatives with verbal direction given the preferences of a cultural descendant.
- Ulana (Howard Hughes Corporation) I have already provided testimony regarding a reburial that we were prevented from attending. You folks have received copies of email threads that detail the discourse. My family was invited to participate in a reburial ceremony of this project. Due to a delay in receiving materials, the reburial is postponed. During that time Carolyn Norman and her brother Theodore Norman are recognized and we are later informed by Ka‘iulani Sodaro that we will no longer be allowed to participate in the reburial as is the wishes of the recognized descendants. Despite Carolyn’s own understanding in her own words: “once an applicant is granted recognition for an ahupua‘a, their recognition is forever and it is not necessary to reapply for every project.” (Application for a Contested Case, April 2022), she insists that this should not be extended to us in the same context. Carolyn Norman is a paid consultant on this project under her business Moechoua Cultural Monitoring Services. “Kekua Norman and ‘Ohana” requests relocation of iwi kūpuna on Carolyn’s project. While Carolyn is not explicitly named individually as is the case in most letters of determinations, we cannot rule out that she isn’t referenced in “‘Ohana”. Particularly as Carolyn has submitted descendancy applications for her family that included her brother (see OIBC August 2020 Minutes) Additionally, Theodore Kekua’s son, Keli‘i Norman is

an employee of his aunty's company. Therefore, it is reasonable that Theodore would act in consort with his sister given that his child is an employee. As I have previously testified, Howard Hughes informs us that it is the decision of the State Recognized descendants that we are not allowed during the ceremony but as guests can come after they kūpuna are buried. We are later informed by individuals who are present on the night of the reburial that both Carolyn's and Theodore's sons are present at the reburial despite NOT being recognized like us.

- Kalae (Howard Hughes Corporation) As is consistent with our family values, our training and our practices, your OIBC Chair asks that SHPD and OHA be invited to the reburial. Email response from Ka'iulani Sodaro notes that she has not received consent from the other cultural descendants of whom Carolyn Norman is also recognized. Despite the fact that Ka'iulani's email notes that we will be the only family attending (my husband, myself, your current OIBC chair and my youngest daughter), we are still NOT ALLOWED to have any additional support from SHPD or OHA in the reburial ceremony.

- The Park Ward Village (Howard Hughes Corporation) In this case, we ARE recognized as cultural descendants, and we are STILL prevented from the reburial ceremony as this is the wishes of the Norman family including Carolyn Norman. See attached email thread.

- Petition for Contested Case Hearing Carolyn Norman petitions for a contested case hearing in which the relief she seeks is as follows:

Any Relief Petitioner Seeks or Deems Itself Entitled to

I am seeking the revocation of descendancy recognition of the entire Caceres ohana to all of the projects in the Waikiki, Honolulu/Kou and Honouliuli Ahupua'a. And ask that each individual of the Caceres ohana reapply individually to all of the projects that they have been falsely and wrongfully recognized to so that they can be properly and honestly vetted by the state. I am also seeking the removal of OIBC council member, Norman "Mana" Caceres.

How Petitioner's Participation in the Proceeding Would Serve the Public Interest

This is to prevent individuals from being maha'oe and ni'ele to other ohana's iwi kupuna by falsely claiming descendancy to iwi kupuna. False claims to iwi kupuna is to hana'ino the already vetted and living ohana to iwi kupuna in these areas.

Deputy AG Cindy Young renders the following:

We further note that Ms. Norman submitted her petition for contested case nearly a year (and in most instances years) after the Council's decisions that the Caceres 'ohana were cultural descendants to the numerous iwi kupuna and lineal descendants to iwi kupuna of Mr. Waipa, and also long after the determinations were made regarding the disposition of the iwi kupuna. A contested case at this point would be moot.

Carolyn Norman is unusually invested in my family and this harassment has lasted over several years. The Deputy AG clearly makes the point that years have passed and the determinations and subsequently reburials have taken place rendering Carolyn's complaint moot. Despite the State's legal opinion, my family continues to be negatively impacted by Carolyn Norman as she asserts unilateral authority in her role as a "State Vetted Cultural Descendant" as recently at Cultural Descendants of the Ulana Iwi. I would be remiss not to note that Howard Hughes Corporation and Ka'iulani Sodaro has enabled, supported and exacted Carolyn's wishes as evidenced by the email threads,

The point I make before this council with my written testimony is that there is a clear and consistent pattern with Carolyn Norman. She has continued to assert authority over my family's practice of mālama iwi kūpuna. Even in the instance where she is not participating or officiating a reburial, she has this overarching reach that prohibits others from participating including recognized descendants, OIBC members, OHA representatives and SHPD staff. This behavior of

exclusion is not in alignment with any known Hawaiian cultural values of 'ohana and is inconsistent with the cultural norms and accepted practices of reburial that was consistent within community and families that came before the OIBC for at least the past 13 years that I can recount. You have a record of more than a decade of examples that corroborate these inclusive practices including that of Paulette Ka'anohi Kaleikini, Carolyn Norman's maternal aunt. My concern is exemplified in a quote that my kumu has shared with me many times....
The greatest predictor of future behavior is past behavior

JOSH GREEN, M.D.
GOVERNOR
KE KIA'ĀINA



STATE OF HAWAII | KA MOKU'ĀINA 'O HAWAII
DEPARTMENT OF TRANSPORTATION | KA 'OIHANA ALAKAU
869 PUNCHBOWL STREET
HONOLULU, HAWAII 96813-5097

EDWIN H. SNIFFEN
DIRECTOR
KA LUNA HO'OKELE

Deputy Directors
Nā Hope Luna Ho'okele
DREANALEE K. KALILI
TAMMY L. LEE
CURT T. OTAGURO
ROBIN K. SHISHIDO

IN REPLY REFER TO:

HWY-IE 25-2.0375

November 28, 2025

VIA EMAIL: traven.apiki@hawaii.gov

TO: OAHU ISLAND & HAWAII ISLAND BURIAL COUNCILS
HISTORIC PRESERVATION DISTRICT
DEPARTMENT OF LAND AND NATURAL RESOURCES

ATTENTION: TRAVEN APIKI, BURIAL SITES SPECIALIST

FROM: LAWRENCE DILL 
HIGHWAYS ADMINISTRATOR

SUBJECT: NATIONAL HISTORIC PRESERVATION ACT (NHPA), SECTION 106
CONSULTATION WITH NATIVE HAWAIIAN ORGANIZATIONS (NHO)
AND POTENTIAL CONSULTING PARTIES
CELLULAR VEHICLE-TO-EVERYTHING (V2X) SYSTEM
VARIOUS AHUPUAA, VARIOUS DISTRICTS
ISLANDS OF OAHU, HAWAII, MAUI, AND KAUAI
FEDERAL-AID PROJECT NO. ATC-1500(119)
VARIOUS TAX MAP KEYS

On behalf of the Federal Highway Administration (FHWA), the Hawaii Department of Transportation (HDOT) is hereby notifying you that on July 15, 2025, consultation under Section 106 of the NHPA of 1966 (amended, 2006) was initiated with the Department of Land and Natural Resources State Historic Preservation Officer (SHPO) for the subject Cellular V2X System project.

The proposed federally funded HDOT project is considered a federal action and undertaking as defined in 36 *Code of Federal Regulations (CFR)*, Section 800.16(y). Effective May 1, 2016, FHWA has issued a Programmatic Delegation of Authority allowing the HDOT and local public agencies to conduct NHPA Section 106 consultations with the SHPO, NHO, and other consulting parties per 36 *CFR*, Section 800.2(c)(4). The FHWA will remain responsible for all findings and determinations charged to the agency during the Section 106 process.

Overview of the Undertaking

The proposed project involves the installation of V2X roadside units and communication equipment at various signalized intersections on the islands of Oahu, Hawaii, Maui, and Kauai. These installations will occur on existing signal poles and within the existing traffic signal cabinets. There will be no trenching, coring, or other ground disturbance.

The various United States Geological Survey maps, adjacent TMK parcels, and typical installation detail can be found at: <https://hidot.hawaii.gov/highways/v2x-intersections/>.

There will be no staging areas as all work vehicles and/or equipment will not remain at any of the work sites and will be removed at the end of each workday.

Consultations

Entitled consulting parties during the Section 106 process includes the Advisory Council of Historic Preservation, SHPO, NHO, and if applicable, local governments and applicants for federal assistance, permits, licenses and other approvals.

NHO and/or Hawaiian Descendants

NHO and Native Hawaiian descendants with ancestral, lineal or cultural ties to, cultural and historical property knowledge of and/or concerns for, and cultural or religious attachment to the proposed Area of Potential Effect (APE) are asked to provide a response to this letter within 30 days of notification.

Other Individuals and Organizations

Individuals and organizations with legal, economic or historic preservation interest are requested to respond within 30 days of notification and demonstrate your interest in the proposed undertaking and provide intent to participate in the Section 106 process. Your participation is subject to FHWA approval.

Request for Comment on the APE

We would like to invite you to comment on the proposed APE. The APE has been calculated to be 10.9 acres. This includes the existing traffic signal cabinet and the parking area at each intersection. Please refer to the typical installation detail which can be found at: <https://hidot.hawaii.gov/highways/v2x-intersections/>.

November 28, 2025

Page 3

Identification of Historic Properties within the APE

We welcome any information you may have on historical and cultural sites that have been recorded in or which you may have knowledge of within the proposed APE. In addition, if you are acquainted with any persons or organization that is knowledgeable about the proposed APE, or any descendants with ancestral, lineal or cultural ties to or cultural knowledge and/or historical properties information of or concerns for, and cultural or religious attachment to the proposed project area, we would appreciate receiving their names and contact information within 30 days of notice.

Conclusion

On behalf of FHWA, HDOT by way of this letter is notifying you of the proposed Cellular V2X System project. Should you want to participate in the Section 106 process, we request your written intent. Please also provide your comments on the proposed APE, any information you may have on cultural and/or historical sites that have been recorded within the APE, as well as the names and contact information of people/organizations who may have cultural affiliations and historical properties information in the vicinity of the proposed APE.

We would appreciate a written response within 30 days from date of receipt to Neal Honma, Project Manager, Traffic Branch via email at DOT.HWY-Tesign@hawaii.gov or by U.S. Postal Service to HDOT Traffic Branch, 601 Kamokila Boulevard, Room 602, Kapolei, Hawaii 96707.

If you have any questions, please contact Mr. Honma at (808) 692-8477 or via email at neal.k.honma@hawaii.gov.

c: FHWA

November 25, 2025

Sent via Email: traven.apiki@hawaii.gov

Mr. Traven Apiki, Burial Sites Specialist
O'ahu Island Burial Council, State Historic Preservation Division
Department of Land and Natural Resources
State of Hawai'i
601 Kamokila Blvd., Room 555
Kapolei, HI 96707

Subject: HRS Chapter 343 Environmental Assessment Pre-Assessment Consultation
State of Hawai'i, Department of Land and Natural Resources
Public Land Acquisition and Improvements for Kāne'ohe Property Project
Tax Map Key: (1) 4-5-035:010
45-045 Kamehameha Highway, Kāne'ohe, HI 96744

Dear Mr. Apiki:

The State of Hawai'i, Department of Land and Natural Resources (DLNR) is proposing to acquire and utilize a 132-acre property identified as Tax Map Key (TMK) (1) 4-5-035:010, located at 45-045 Kamehameha Highway in the Kāne'ohe district of the Island of O'ahu. The property was previously developed and used for the Hawai'i Pacific University campus and is currently owned and managed by Adventist Health Castle (Adventist). DLNR is proposing to relocate various operations from several DLNR divisions to this campus to support their operations, address current space shortages, and accommodate future agency growth. Use of facilities would also accommodate a couple University of Hawai'i research programs and provide a site for the City and County of Honolulu to construct a new Emergency Medical Services substation.

Bowers+Kubota Consulting, Inc. (B+K) is supporting the State DLNR on this action by preparing an Environmental Assessment (EA) pursuant to Chapter 343, Hawai'i Revised Statutes for the proposed Public Land Acquisition and Improvements for Kāne'ohe Property Project (Project). This EA is being prepared because the action includes the use of state funds for the property's acquisition and redevelopment, use of state land once acquired, and is a use within the State's Conservation District.

Thus, B+K is initiating pre-assessment consultation to obtain your comments that will assist us in the preparation of the EA document. Attached is a document providing more information on the project for your review. We would appreciate receiving your written comments via email or mailing addressed to the following below within 30 days of receipt of this letter.

Mr. Ronald A. Sato, AICP
Bowers + Kubota Consulting, Inc.
94-408 Akoki Street, Suite 201-A
Waipahu, Hawaii 96797
Email: rsato@bowersandkubota.com



Mr. Traven Apiki
November 25, 2025
Page 2

We thank you for your interest and participation in this Project. If you have any questions, please feel free to contact me at (808) 521-5361 or by email at rsato@bowersandkubota.com.

Sincerely yours,
Bowers + Kubota Consulting, Inc.

A handwritten signature in black ink, appearing to read 'R A Sato', written in a cursive style.

Ronald A. Sato, AICP
Sr. Project Manager

Enclosures:
Project Description, Location and Site Maps

cc: Gayson Ching, DLNR – ENG

State of Hawai'i, Department of Land and Natural Resources
Public Land Acquisition and Improvements for Kāne'ohe Property Project
Project Description

November 2025

The State of Hawai'i, Department of Land and Natural Resources (DLNR) is proposing to acquire and utilize a 132-acre property identified as Tax Map Key (TMK) (1) 4-5-035:010, located at 45-045 Kamehameha Highway in the Kāne'ohe district of the Island of O'ahu. The property was previously developed and used for the Hawai'i Pacific University campus and is currently owned and managed by Adventist Health Castle (Adventist). Figure 1 includes a location map showing this property's location. DLNR is proposing to relocate various operations of several DLNR divisions to this new proposed Hawai'i Loa Campus (campus) to better support their operations, address current space shortages, and accommodate future agency growth.

VISION. The campus would be centered on the responsible management of Hawai'i's trust resources supporting the various missions of several DLNR's divisions. This would include relocating and supporting operations of various sections from DLNR's Division of Forestry and Wildlife (DOFAW), Division of Conservation and Resources Enforcement (DOCARE), State Historic Preservation Division (SHPD), Division of Aquatic Resources (DAR), and Division of Boating and Ocean Recreation (DOBOR). The campus may also support the operational capacity of partner projects with the University of Hawai'i (UH) such as the Ko'olau Mountains Watershed Partnership (KMWP) and O'ahu Invasive Species Committee (OISC) that implement DLNR's shared stewardship mission. A site within the campus is also designated for the City and County of Honolulu (City) to construct a new Honolulu Emergency Medical Services (EMS) substation to expand coverage and service. Use of existing recreational facilities at the campus is planned to be managed by DLNR in cooperation with a non-profit organization(s) supporting community activities. The campus would allow DLNR to better serve community groups engaged in co-stewardship of our lands and waters, provide more timely responses, and offer an additional location to provide some transactional services to the public, such as boating permitting and licensing.

PROJECT NEED AND OBJECTIVES. Several sections within DLNR divisions need more space at their current locations to better support staff operations, provide sufficient storage, and to accommodate future increased staffing. DLNR also needs to relocate both DOCARE and DOFAW baseyard operations from their current Waimano facility located in Pearl City so that those facilities can be used by the State Department of Health. Therefore, this new campus would be important in supporting this needed relocation. The UH KMWP program that also operates at Waimano would also need to leave and this new campus provides an opportunity to relocate their program. Several DLNR division operations and UH programs currently operate out of temporary storage containers or modular structures due to the shortage of available facilities. Therefore, there is a need for additional improved and permanent facilities for DLNR divisions and UH programs which this new campus would provide. The new campus also provides an opportunity for the City to increase EMS coverage within the Windward district via a new substation. Thus, DLNR is proposing to acquire this property from Adventist to support their operations. Improvements would include the renovation of existing facilities to support operations and constructing new storage facilities associated with the former HPU campus. Other site improvements, such as existing recreational facilities, would provide opportunities to support the community organizations and activities.

November 2025

Page 2 of 3

PROJECT DESCRIPTION. A preliminary Site Plan is attached as Figure 2 that conceptually shows improvements planned for the campus to support the relocation of several sections from DLNR divisions, two potential UH programs, and a site designated for the City to construct a new EMS substation. Most of the improvements proposed would consist of renovating existing facilities and structures to accommodate staff office and lab operations, constructing new storage facilities, and providing site improvements to driveways, parking, and recreational facilities. A summary of improvements proposed to support divisions are provided.

- A. Division of Forestry and Wildlife: DOFAW's mission is to protect, manage, and restore natural and cultural resources in collaboration with the people of Hawai'i. Staff from their Natural Area Reserve System, Snail Extinction Prevention Program, and Hawai'i Invertebrate Programs currently at the Waimano baseyard would relocate to the new campus. Some staff from other sections (e.g. forest fire protection) in other offices on O'ahu are also planned to be relocated. DOFAW uses would include office and lab spaces, meeting and conference spaces (education, outreach, etc.), equipment storage (warehouse and outdoor space), vehicle storage and maintenance area, plant propagation (endangered) and insect nursery for research, shade houses, and a helicopter landing zone for DOFAW emergency operations (wildfires, etc.).
- B. Division of Conservation and Resources Enforcement: DOCARE's mission is to uphold the laws that protect, conserve, and manage Hawai'i's unique and limited natural, cultural, and historic resources for current and future generations. Staff from DOCARE's O'ahu Branch operating at the Waimano baseyard would relocate to the new campus, and new space would be provided for their Academy Program that presently does not have permanent space to operate. Proposed uses would include squad/command room and office space, dispatcher space, offices and training space for their academy along with dormitories for recruits, equipment storage and for evidence materials seized, gear and armory (firearms), and outdoor and indoor physical and tactical training spaces.
- C. State Historic Preservation Division: SHPD's mission is to ensure that historic and cultural resources are considered as communities change and grow. SHPD would relocate its operations from its current location in the Kapolei State Building to the Hawai'i Loa Campus. These operations would include office spaces, library, and meeting space, storage of sensitive files and artifacts, and providing space for the public to research files.
- D. Division of Boating and Ocean Recreation. DOBOR's mission is to preserve Hawai'i's natural and cultural resources while ensuring public access to State waters and enhancing the ocean experience. DOBOR would add a satellite office, help desk, and additional miscellaneous space to support boater registrations, permitting, and records storage at the campus.
- E. Division of Aquatic Resources. DAR's mission is to work with the people of Hawai'i to manage, conserve, and restore the State's unique aquatic resources and ecosystems for present and future generations. DAR's Mitigation, Aquaculture, Resilience, and Restoration (MARR) team would relocate their operations from Sand Island to the campus alleviating current space shortages there. This would enhance creating opportunities in stewardship, community partnerships, and education at this campus. Facilities would include office and lab spaces, meeting and conference spaces, equipment storage, vehicle storage and maintenance area, and dormitories for visiting neighbor island staff and for staff training programs.

November 2025

Page 3 of 3

F. UH Programs.

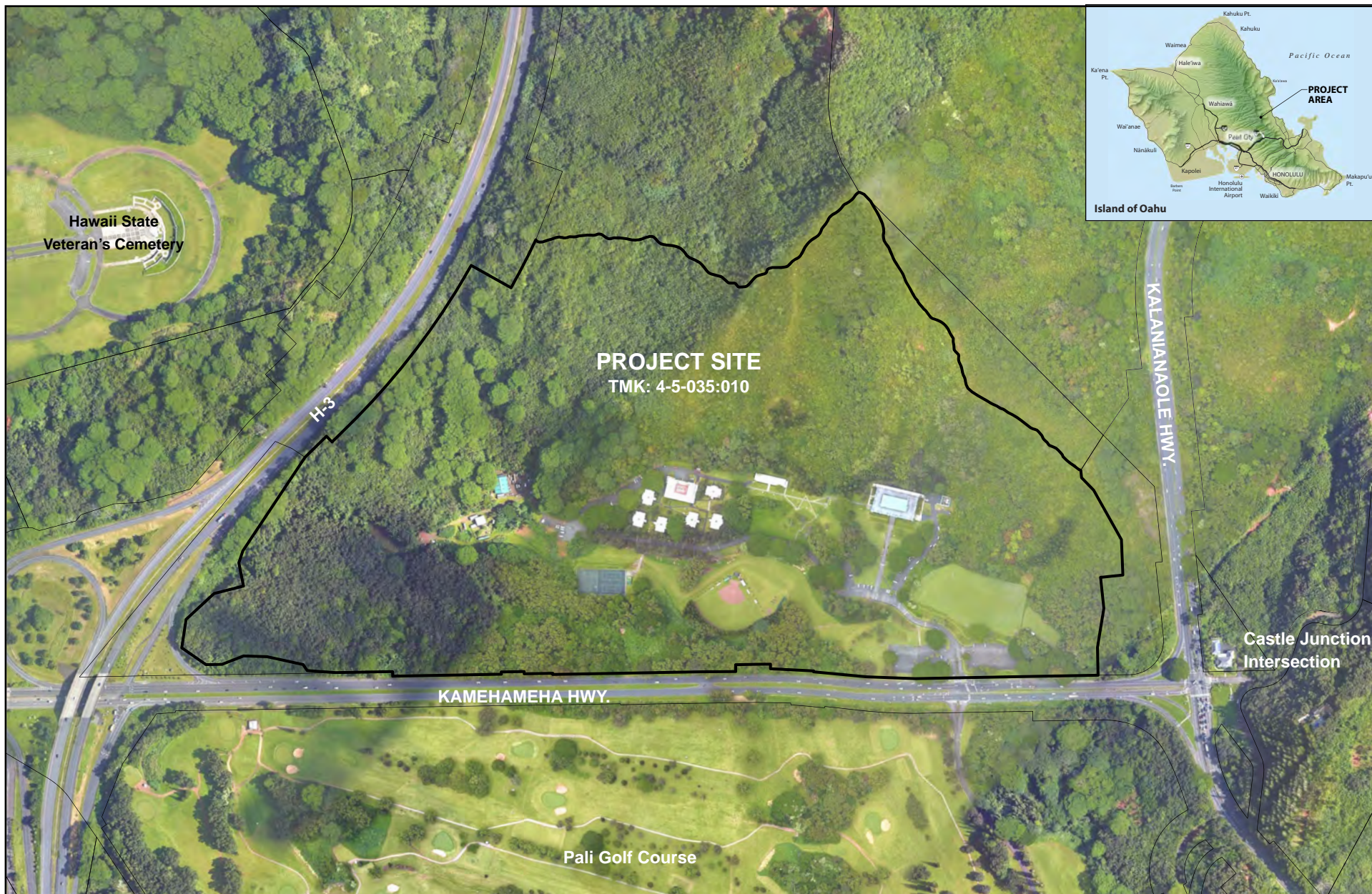
1. Ko'olau Mountains Watershed Partners. Their mission is to foster landowner collaboration and perpetuate the water resources of O'ahu by protecting and enhancing the Ko'olau forests and its native ecosystems. Staff from this program now operating at the Waimano baseyard could relocate to the new campus. Facilities supporting them would include office and lab spaces, and meeting and conference spaces.
2. O'ahu Invasive Species Committee. This is a partnership of government, private and non-profit organizations, and concerned individuals working to prevent the establishment of new alien pests, control incipient pests on public and private land, and educate the community about the threats of invasive species. Staff from this program now operating at DOFAW's Kawainui Marsh baseyard could relocate to the new campus. Facilities would include office and lab spaces, and meeting and conference spaces.

- G. City Emergency Medical Services. The City EMS provides quality pre-hospital emergency medical treatment and services to residents and visitors of O'ahu. EMS would establish a new substation at the campus that includes an ambulance, office space, and equipment storage.

The former HPU campus includes several facilities totaling about 118,000 square feet of space consisting of the Academic Center (3 floors), Dining Commons (Cafeteria), dorms, a modular building, and a few maintenance buildings. As shown on Figure 2, the Academic Center and Dining Commons buildings would be renovated to provide office, lab, and other operational space to support DLNR divisions and UH programs. The six existing dorm buildings would be renovated to provide continued use as dormitories for shared use by DLNR agencies and City EMS to support training programs and conference attendees. Existing warehouse buildings at the campus would be renovated to provide storage space for agencies, and several new storage buildings (24,000 to 28,000 sf) would be constructed to provide additional storage space needed. The existing modular building would be demolished to provide space for siting additional storage buildings. A site using a parking lot by the campus entrance is also designed for the City's new EMS substation.

Other accessory improvements include a few shade houses, spaces cleared for outdoor plantings, parking improvements, and loading and washdown areas for vehicles and staff gear returning from the field. An agency shared conference room planned on the first floor of the Academic Center could also be used by community organizations for meetings. The campus has a soccer field, softball field, and tennis courts which the DLNR Division of State Parks plans to co-manage the continued use of those recreational facilities with a non-profit organization(s). The hillside area above the campus buildings along with the soccer field would support DOCARE field training activities. An area in the hillside is planned to be cleared to provide a helicopter landing area or existing fields may instead be used to support DOFAW emergency operations (wildfires).

Reconstruction of renovations and new construction of storage buildings would likely occur over a phased timeframe of about 7 to 10 years (2035) depending upon funding by the Legislature. Acquisition of the property is planned to be completed in 2026. In the interim, it is likely that existing and additional storage requirements needed may be temporarily accommodated using containers or modular structures until permanent buildings can be funded and constructed.



Source: HOLIS, C&C of Honolulu, June 4, 2025

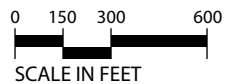


FIGURE 1
LOCATION MAP



STATE DLNR PUBLIC LANDS ACQUISITION AND IMPROVEMENTS
FOR KANEOHE PROPERTY PROJECT



NORTH

0 50 100 200
SCALE IN FEET

FIGURE 2
PRELIMINARY CONCEPTUAL SITE PLAN

JOSH GREEN, M.D.
GOVERNOR
KE KIA'ĀINA



STATE OF HAWAII | KA MOKU'ĀINA 'O HAWAII
DEPARTMENT OF TRANSPORTATION | KA 'OIHANA ALAKAU
869 PUNCHBOWL STREET
HONOLULU, HAWAII 96813-5097

EDWIN H. SNIFFEN
DIRECTOR
KA LUNA HO'OKELE

Deputy Directors
Nā Hope Luna Ho'okele
DREANALEE K. KALILI
TAMMY L. LEE
CURT T. OTAGURO
ROBIN K. SHISHIDO

IN REPLY REFER TO:

HWY-TD 25-2.0377

December 3, 2025

VIA EMAIL: traven.apiki@hawaii.gov

TO: OAHU ISLAND BURIAL COUNCIL
HISTORIC PRESERVATION DIVISION
DEPARTMENT OF LAND AND NATURAL RESOURCES

ATTENTION: TRAVEN APIKI, BURIAL SITES SPECILIAST

FROM: LAWRENCE DILL 
HIGHWAYS ADMINISTRATOR

SUBJECT: NATIONAL HISTORIC PRESERVATION ACT (NHPA)
SECTION 106 CONSULTATION WITH NATIVE HAWAIIAN
ORGANIZATIONS (NHO) AND POTENTIAL CONSULTING PARTIES
TRAFFIC SIGNAL MODERNIZATION AT VARIOUS LOCATIONS, PHASE 4
PUPUKEA, WAIANAE, NANAKULI, HONOULIULI, AND WAIKIKI
AHUPUAA KOOLAULO, WAIANAE, EWA, AND KONA MOKU
OAHU ISLAND
FEDERAL-AID PROJECT NO. NH-0300(223)
TAX MAP KEY NO.: (1) 5-9-011:999 (KAMEHAMEHA HIGHWAY AND
PUPUKEA ROAD RIGHT-OF-WAY (ROW));
(1) 7-4-001:999 (KAMEHAMEHA HIGHWAY AVOCADO STREET ROW);
(1) 8-9-006:999 (FARRINGTON HIGHWAY AND PILIOKAHI AVENUE ROW);
(1) 9-1-141:999 AND (1) 9-1-010:999 (FORT WEAVER ROAD AND
KEAUNUI DRIVE ROW); AND
(1) 2-4-007:999 (EXIT 23 AT PUNAHOU STREET/BINGHAM STREET
INTERSECTION ROW)

On behalf of the Federal Highway Administration (FHWA), the State of Hawaii Department of Transportation (HDOT) is hereby notifying you that on October 9, 2025, consultation under Section 106 of the NHPA of 1966 (amended, 2006), was initiated with the Department of Land and Natural Resources State Historic Preservation Office (SHPO) for the subject traffic signal modernization project.

The proposed federally funded HDOT project is considered a federal action and undertaking as defined in 36 *Code of Federal Regulations (CFR)*, Section 800.16(y). Effective May 1, 2016, FHWA has issued a Programmatic Delegation of Authority allowing the HDOT and local public

agencies to conduct NHPA Section 106 consultations with the SHPO, NHO, and other consulting parties per 36 *CFR*, Section 800.2(c)(4). The FHWA will remain responsible for all findings and determinations charged to the agency during the Section 106 process.

Overview of the Undertaking

The proposed traffic signals modernization project includes work at five intersection locations in Pupukea, Wahiawa, Nanakuli, Ewa Beach, and Honolulu, Oahu Island (Figure 1).

1. Kamehameha Highway and Pupukea Road (Figure 2)
2. Kamehameha Highway and Avocado Street (Figure 3)
3. Farrington Highway and Piliokahi Avenue (Figure 4)
4. Fort Eager Road and Keaunui Drive (Figure 5)
5. Exit 23 at Punahou Street/Bingham Street Intersection (Figure 6)

The proposed work would include replacement of traffic signal poles, traffic signal cabinets, and cabling; minor modifications to medians; installation of new loop detectors; and Americans with Disabilities Act improvements to curb ramps. Construction of new traffic signal pole foundations would require drilling to a depth of up to 50 feet below grade. The maximum depth of trenching for cables and conduits will vary from 3 to 6 feet below grade. The project will also include lighting assessments and may result in lighting changes near the intersections.

Consultations

Entitled consulting parties during the Section 106 process includes the Advisory Council of Historic Preservation, SHPO, NHO, and if applicable, local governments and applicants for federal assistance, permits, licenses and other approvals.

NHO and/or Hawaiian Descendants

NHO and Native Hawaiian descendants with ancestral, lineal or cultural ties to, cultural and historical property knowledge of and/or concerns for, and cultural or religious attachment to the proposed Area of Potential Effect (APE) are asked to provide a response to this letter within 30 days of notification.

Other Individuals and Organizations

Individuals and organizations with legal, economic or historic preservation interest are requested to respond within 30 days of notification and demonstrate your interest in the proposed undertaking and provide intent to participate in the Section 106 process. Your participation is subject to FHWA approval.

Request for Comment on the APE

We would like to invite you to comment on the proposed APE.

The APE is comprised of five separate project sites at the following intersections:

1. The Kamehameha Highway and Pupukea Road APE is located in the Pupukea Ahupuaa, Koolauloa District, Oahu Island, Hawaii. The APE is approximately 1.15 acres, extending for a total distance of approximately 50 feet within the Kamehameha Highway ROW and approximately 40 feet within the Pupukea Road ROW. Please refer to the attached Figure 2.

The proposed excavation for the traffic signalization improvements will involve narrow trench excavations for electrical lines on 3 or all 4 sides of the intersection. Trenching for cables and conduits will be approximately 500 linear feet to a maximum depth of 3 to 6 feet below grade. Construction of new traffic signal pole foundations would require drilling to a depth of up to 50 feet below grade. Construction staging and stock piling is to take place within the described APE.

2. The Kamehameha Highway and Avocado Street APE is located in the Waianae Ahupuaa, Waianae District, Oahu Island, Hawaii. The APE is approximately 4 acres, extending for a total distance of approximately 65 feet within the Kamehameha Highway ROW and approximately 35 feet within the Avocado Street ROW. Please refer to the attached Figure 3.

The proposed excavation for the traffic signalization improvements will involve narrow trench excavations for electrical lines on 3 or all 4 sides of the intersection. Trenching for cables and conduits will be approximately 700 linear feet to a maximum depth of 3 to 6 feet below grade. Construction of new traffic signal pole foundations would require drilling to a depth of up to 50 feet below grade. Construction staging and stock piling is to take place within the described APE.

3. The Farrington Highway and Piliokahi Avenue APE is located in the Nanakuli Ahupuaa, Waianae District, Oahu Island, Hawaii. The APE is approximately 2.72 acres, extending for a total distance of approximately 145 feet within the Farrington Highway ROW and approximately 65 feet within the Piliokahi Avenue ROW. Please refer to the attached Figure

The proposed excavation for the traffic signalization improvements will involve narrow trench excavations for electrical lines on 3 or all 4 sides of the intersection. Trenching for cables and conduits will be approximately 800 linear feet to a maximum depth of 3 to 6 feet below grade. Construction of new traffic signal pole foundations would require drilling to a depth of up to 50 feet below grade. Construction staging and stock piling is to take place within the described APE.

4. The Fort Weaver Road and Keaunui Drive APE is located in the Honouliuli Ahupuaa, Ewa District, Oahu Island, Hawaii. The APE is approximately 1.8 acres combined, extending for a total distance of approximately 150 feet within the Fort Weaver Road ROW and approximately 110 feet within the Keaunui Drive ROW. Please refer to the attached Figure 5.

The proposed excavation for the traffic signalization improvements will involve narrow trench excavations for electrical lines on 3 or all 4 sides of the intersection. Trenching for cables and conduits will be approximately 3,000 linear feet to a maximum depth of 3 to 6 feet below grade. Construction of new traffic signal pole foundations would require drilling to a depth of up to 50 feet below grade. Construction staging and stock piling is to take place within the described APE.

5. The Exit 23 at Punahou Street/Bingham Street Intersection APE is located in the Waikiki Ahupuaa, Kona District, Oahu Island, Hawaii. The APE is approximately 1.2 acres combined, extending for a total distance of approximately 80 feet within the Exit 23 at Punahou Street ROW and approximately 60 feet within the Bingham Street Intersection ROW. Please refer to the attached Figure 6.

The proposed excavation for the traffic signalization improvements will involve narrow trench excavations for electrical lines on 3 or all 4 sides of the intersection. Trenching for cables and conduits will be approximately 700 linear feet to a maximum depth of 3 to 6 feet below grade. Construction of new traffic signal pole foundations would require drilling to a depth of up to 50 feet below grade. Construction staging and stock piling is to take place within the described APE.

The total combined area of the APE is approximately 27.07 acres and extends approximately 6 feet below the surface. The APE includes staging areas and the full widths of roadway ROW. Please refer to the attached maps of the APE.

Identification of Historic Properties within the APE

We welcome any information you may have on historical and cultural sites that have been recorded in or which you may have knowledge of within the proposed APE. In addition, if you are acquainted with any persons or organization that is knowledgeable about the proposed APE, or any descendants with ancestral, lineal or cultural ties to or cultural knowledge and/or historical properties information of or concerns for, and cultural or religious attachment to the proposed project area, we would appreciate receiving their names and contact information within 30 days of notice.

Conclusion

On behalf of FHWA, HDOT by way of this letter is notifying you of the proposed Traffic Signal Modernization at Various Locations, Phase 4 project. Should you want to participate in the Section 106 process, we request your written intent. Please also provide your comments on the proposed APE, any information you may have on cultural and/or historical sites that have been recorded within the APE, as well as the names and contact information of people/organizations who may have cultural affiliations and historical properties information in the vicinity of the proposed APE.

We would appreciate a written response within 30 days from date of receipt to Mr. Patrick Tuter, HDOT Project Manager, Traffic Branch via email at DOT.HWY-Tesign@hawaii.gov. Please feel free to contact Mr. Tuter at (808) 692-8477 or by email at Patrick.l.tuter@hawaii.gov if you have any questions.

Attachments

c: Richelle Takara, FHWA

JOSH GREEN, M.D.
GOVERNOR
KE KIA'ĀINA



STATE OF HAWAII | KA MOKU'ĀINA 'O HAWAII'
DEPARTMENT OF TRANSPORTATION | KA 'OIHANA ALAKAU
869 PUNCHBOWL STREET
HONOLULU, HAWAII 96813-5097

EDWIN H. SNIFFEN
DIRECTOR
KA LUNA HO'OKELE

Deputy Directors
Nā Hope Luna Ho'okele
DREANALEE K. KALILI
TAMMY L. LEE
CURT T. OTAGURO
ROBIN K. SHISHIDO

IN REPLY REFER TO:

HWY-TD 25-2.0378

December 4, 2025

VIA EMAIL: traven.apiki@hawaii.gov

TO: OAHU ISLAND BURIAL COUNCIL
HISTORIC PRESERVATION DIVISION
DEPARTMENT OF LAND AND NATURAL RESOURCES

ATTENTION: TRAVEN APIKI, BURIAL SITES SPECILIAST

FROM: LAWRENCE DILL 
HIGHWAYS ADMINISTRATOR

SUBJECT: NATIONAL HISTORIC PRESERVATION ACT (NHPA)
SECTION 106 CONSULTATION WITH NATIVE HAWAIIAN
ORGANIZATIONS (NHO) AND POTENTIAL CONSULTING PARTIES
TRAFFIC SIGNAL MODERNIZATION AT VARIOUS LOCATIONS, PHASE 4A
WAIPIO, HALAWA, AND HONOLULU AHUPUAA
EWA AND KONA MOKU, OAHU ISLAND
FEDERAL-AID PROJECT NO. STP-0300(224)
TAX MAP KEYS NO.: (1) 9-5-020:999 (KAMEHAMEHA HIGHWAY AT
MEHEULA PARKWAY RIGHT-OF-WAY (ROW)); (1) 9-4-005:999
(KAMEHAMEHA HIGHWAY AT KA UKA BOULEVARD ROW);
(1) 9-9-076:999 (KAHUAPAANI STREET ROW);
(1) 2-1-018:999 (VINEYARD BOULEVARD ROW); AND (1) 1-7-033:999
(LILIHA STREET ROW)

On behalf of the Federal Highway Administration (FHWA), the State of Hawaii Department of Transportation (HDOT) is hereby notifying you that on October 9, 2025, consultation under Section 106 of the NHPA of 1966 (amended, 2006), was initiated with the Department of Land and Natural Resources State Historic Preservation Office (SHPO) for the subject traffic signal modernization project.

The proposed federally funded HDOT project is considered a federal action and undertaking as defined in 36 *Code of Federal Regulations (CFR)*, Section 800.16(y). Effective May 1, 2016, FHWA has issued a Programmatic Delegation of Authority allowing the HDOT and local public agencies to conduct NHPA Section 106 consultations with the SHPO, NHO, and other consulting parties per 36 *CFR*, Section 800.2(c)(4). The FHWA will remain responsible for all findings and determinations charged to the agency during the Section 106 process.

Overview of the Undertaking

The proposed traffic signals modernization project includes work at five intersection locations in Waipio, Halawa, and Honolulu, Oahu Island (Figure 1).

1. Kamehameha Highway at Meheula Parkway (Figure 2)
2. Kamehameha Highway at Ka Uka Boulevard (Figure 3)
3. Kahuapaani Street at Mananai Place/Ala Alii Street (Figure 4)
4. Vineyard Boulevard at Punchbowl Street (Figure 5)
5. Liliha Street with School Street and H-1 On-Ramp (Figure 6)

The proposed work would include replacement of traffic signal poles, traffic signal cabinets, and cabling; minor modifications to medians; installation of new loop detectors; and Americans with Disabilities Act improvements to curb ramps. Construction of new traffic signal pole foundations would require drilling to a depth of up to 50 feet below grade. The maximum depth of trenching for cables and conduits will vary from 3 to 6 feet below grade. The project will also include lighting assessments and may result in lighting changes near the intersections.

Consultations

Entitled consulting parties during the Section 106 process includes the Advisory Council of Historic Preservation, SHPO, NHO, and if applicable, local governments and applicants for federal assistance, permits, licenses and other approvals.

NHO and/or Hawaiian Descendants

NHO and Native Hawaiian descendants with ancestral, lineal or cultural ties to, cultural and historical property knowledge of and/or concerns for, and cultural or religious attachment to the proposed Area of Potential Effect (APE) are asked to provide a response to this letter within 30 days of notification.

Other Individuals and Organizations

Individuals and organizations with legal, economic or historic preservation interest are requested to respond within 30 days of notification and demonstrate your interest in the proposed undertaking and provide intent to participate in the Section 106 process. Your participation is subject to FHWA approval.

Request for Comment on the APE

We would like to invite you to comment on the proposed APE.

The APE is comprised of five separate project sites at the following intersections:

1. The Kamehameha Highway at Meheula Parkway APE is located in the Waipio Ahupuaa, Ewa District, Oahu Island, Hawaii. The APE is approximately 7.21 acres, extending for a total distance of approximately 75 feet within the Kamehameha Highway ROW and approximately 115 feet within the Meheula Parkway ROW. Please refer to the attached Figure 2.

The proposed excavation for the traffic signalization improvements will involve narrow trench excavations for electrical lines on 3 or all 4 sides of the intersection. Trenching for cables and conduits will be approximately 2,300 linear feet to a maximum depth of 3 to 6 feet below grade. Construction of new traffic signal pole foundations would require drilling to a depth of up to 50 feet below grade. Construction staging and stock piling is to take place within the described APE.

2. The Kamehameha Highway at Ka Uka Boulevard APE is located in the Waipio Ahupuaa, Ewa District, Oahu Island, Hawaii. The APE is approximately 9.48 acres, extending for a total distance of approximately 100 feet within the Kamehameha Highway ROW and approximately 50 feet within the Ka Uka Boulevard ROW. Please refer to the attached Figure 3.

The proposed excavation for the traffic signalization improvements will involve narrow trench excavations for electrical lines on 3 or all 4 sides of the intersection. Trenching for cables and conduits will be approximately 3,200 linear feet to a maximum depth of 3 to 6 feet below grade. Construction of new traffic signal pole foundations would require drilling to a depth of up to 50 feet below grade. Construction staging and stock piling is to take place within the described APE.

3. The Kahuapaani Street at Mananai Place/Ala Alii Street APE is located in the Halawa Ahupuaa, Ewa District, Oahu Island, Hawaii. The APE is approximately 2.86 acres, extending for a total distance of approximately 100 feet within the Kahuapaani Street ROW and approximately 50 feet within the Mananai Place/Ala Alii Street ROW. Please refer to the attached Figure 4.

The proposed excavation for the traffic signalization improvements will involve narrow trench excavations for electrical lines on 3 or all 4 sides of the intersection. Trenching for cables and conduits will be approximately 1,800 linear feet to a maximum depth of 3 to 6 feet below grade. Construction of new traffic signal pole foundations would require drilling to a depth of up to 50 feet below grade. Construction staging and stock piling is to take place within the described APE.

4. The Vineyard Boulevard at Punchbowl Street APE is located in the Honolulu Ahupuaa, Kona District, Oahu Island, Hawaii. The APE is approximately 1.8 acres combined, extending for a total distance of approximately 70 feet within the Vineyard Boulevard ROW and approximately 85 feet within the Punchbowl Street ROW. Please refer to the attached Figure 5.

The proposed excavation for the traffic signalization improvements will involve narrow trench excavations for electrical lines on 3 or all 4 sides of the intersection. Trenching for cables and conduits will be approximately 2,200 linear feet to a maximum depth of 3 to 6 feet below grade. Construction of new traffic signal pole foundations would require drilling to a depth of up to 50 feet below grade. Construction staging and stock piling is to take place within the described APE.

5. The Liliha Street with School Street and H-1 On-Ramp APE is located in the Honolulu Ahupuaa, Kona District, Oahu Island, Hawaii. The APE is approximately 2.35 acres combined, extending for a total distance of approximately 50 feet within the Liliha Street ROW and approximately 35 feet within the School Street Intersection ROW. Please refer to the attached Figure 6.

The proposed excavation for the traffic signalization improvements will involve narrow trench excavations for electrical lines on 3 or all 4 sides of the intersection. Trenching for cables and conduits will be approximately 1,000 linear feet to a maximum depth of 3 to 6 feet below grade. Construction of new traffic signal pole foundations would require drilling to a depth of up to 50 feet below grade. Construction staging and stock piling is to take place within the described APE.

The total combined area of the APE is approximately 23.7 acres and extends approximately 6 feet below the surface. The APE includes staging areas and the full widths of roadway ROW. Please refer to the attached maps of the APE.

Identification of Historic Properties within the APE

We welcome any information you may have on historical and cultural sites that have been recorded in or which you may have knowledge of within the proposed APE. In addition, if you are acquainted with any persons or organization that is knowledgeable about the proposed APE, or any descendants with ancestral, lineal or cultural ties to or cultural knowledge and/or historical properties information of or concerns for, and cultural or religious attachment to the proposed project area, we would appreciate receiving their names and contact information within 30 days of notice.

Conclusion

On behalf of FHWA, HDOT by way of this letter is notifying you of the proposed Traffic Signal Modernization at Various Locations, Phase 4A project. Should you want to participate in the Section 106 process, we request your written intent. Please also provide your comments on the proposed APE, any information you may have on cultural and/or historical sites that have been recorded within the APE, as well as the names and contact information of people/organizations who may have cultural affiliations and historical properties information in the vicinity of the proposed APE.

We would appreciate a written response within 30 days from date of receipt to Mr. Patrick Tuter, HDOT Project Manager, Traffic Branch via email at DOT.HWY-T_esign@hawaii.gov. Please feel free to contact Mr. Tuter at (808) 692-8477 or by email at Patrick.l.tuter@hawaii.gov if you have any questions.

Attachments

c: Richelle Takara, FHWA

