

United States Department of the Interior
National Park Service

National Register of Historic Places Registration Form

This form is for use in nominating or requesting determinations for individual properties and districts. See instructions in National Register Bulletin, *How to Complete the National Register of Historic Places Registration Form*. If any item does not apply to the property being documented, enter "N/A" for "not applicable." For functions, architectural classification, materials, and areas of significance, enter only categories and subcategories from the instructions.

1. Name of Property

Historic name: Yokohama Specie Bank Manager's House

Other names/site number: _____

Name of related multiple property listing:

N/A

(Enter "N/A" if property is not part of a multiple property listing)

2. Location

Street & number: 1940 Manoa Road

City or town: Honolulu State: HI County: Honolulu

Not For Publication Vicinity:

3. State/Federal Agency Certification

As the designated authority under the National Historic Preservation Act, as amended,

I hereby certify that this nomination request for determination of eligibility meets the documentation standards for registering properties in the National Register of Historic Places and meets the procedural and professional requirements set forth in 36 CFR Part 60.

In my opinion, the property meets does not meet the National Register Criteria. I recommend that this property be considered significant at the following level(s) of significance:

national statewide X local

Applicable National Register Criteria:

A B X C D

<p>_____ Signature of certifying official/Title:</p>	<p>_____ Date</p>
<p>_____ State or Federal agency/bureau or Tribal Government</p>	

Yokohama Specie Bank Manager's House
Name of Property

Honolulu, HI
County and State

In my opinion, the property ___ meets ___ does not meet the National Register criteria.

Signature of commenting official:

Date

Title :
agency/bureau

State or Federal
or Tribal Government

4. National Park Service Certification

I hereby certify that this property is:

___ entered in the National Register

___ determined eligible for the National Register

___ determined not eligible for the National Register

___ removed from the National Register

___ other (explain:) _____

Signature of the Keeper

Date of Action

5. Classification

Ownership of Property

(Check as many boxes as apply.)

Private:

Public – Local

Public – State

Public – Federal

Category of Property

(Check only **one** box.)

Building(s)

Yokohama Specie Bank Manager's House
Name of Property

Honolulu, HI
County and State

District

Site

Structure

Object

Number of Resources within Property

(Do not include previously listed resources in the count)

Contributing	Noncontributing	
<u>1</u>	<u>2</u>	buildings
<u> </u>	<u> </u>	sites
<u> </u>	<u> </u>	structures
<u> </u>	<u> </u>	objects
<u>1</u>	<u>2</u>	Total

Number of contributing resources previously listed in the National Register 0

6. Function or Use

Historic Functions

(Enter categories from instructions.)

Domestic, Single Dwelling

Current Functions

(Enter categories from instructions.)

Domestic, Single Dwelling

Yokohama Specie Bank Manager's House
Name of Property

Honolulu, HI
County and State

7. Description

Architectural Classification

(Enter categories from instructions.)

Late Nineteenth Early Twentieth Century American Revivals

Colonial Revival

Materials: (enter categories from instructions.)

Principal exterior materials of the property: composition shingle roof, lava rock foundation, clapboard walls, brick patio

Narrative Description

(Describe the historic and current physical appearance and condition of the property. Describe contributing and noncontributing resources if applicable. Begin with a **summary paragraph** that briefly describes the general characteristics of the property, such as its location, type, style, method of construction, setting, size, and significant features. Indicate whether the property has historic integrity.)

Summary Paragraph

The Yokohama Specie Bank Manager's House is situated above Manoa Road on a large lot, which has been subdivided. It stands in a quiet residential neighborhood, on a relatively flat, 17,113 square foot lot and faces west. The house is a two story Colonial Revival style house with a 16' x 21' porte cochere projecting from its *makai* facing entry. The asymmetric residence sits on a raised post and pier and concrete and lava rock foundation with square lattice covering the openings between the lava rock piers and walls. It has an approximately 40' x 67' rectangular foot print, and features clapboard walls and a composition shingled, flared hip roof with closed, overhanging eaves. The eaves have tongue and groove soffits adorned by consoles. In addition to the house, a modern work studio and more recent garage also stand on the property. Neither of these buildings contribute nor detract, from the historic character of the house. The 5,220 square foot, four bedroom, three and a half bath house is in very good condition and very much retains its historic integrity of design, materials, location, setting, feelings and associations.

Yokohama Specie Bank Manager's House
Name of Property

Honolulu, HI
County and State

Narrative Description

A fairly long black top drive runs from Manoa Road to the house. The house is located on a flag lot, as the result of the subdivision of various parcels off the house's original 82,894 square foot lot. Despite the subdivided lots, the house retains a spacious lawn-covered surrounding, as the neighboring houses are on a smaller scale and none of the parcels between the house and road are physically demarcated by fences or other elements. Before reaching the house the driveway forks, with the more westerly fork running to the non-contributing, modern garage and the other to under the porte cochere. Between the house and the garage stands a large breadfruit tree (*Artocarpus altilis*), and a large ylang ylang tree (*Cananga odorata*) grows between the house and the driveway.

The single story porte cochere extends outward from the house. At each of its outer corners a set of three, fluted Doric columns rise from a lava rock base and carry a denticulated cornice. The lava rock base runs between the two columns and has a 4" high concrete cap. The porte cochere has a tongue and groove ceiling, and a deck with a balustrade crowns this element of the formal entry. The balustrade is 25" high and has 2" x 2" square balusters. A set of three, 3' high, 16" x 18", paneled posts are at the outer corners of the balustrade, and the deck has a built-up floor. At the rear of the deck is a sun room which projects from the façade and features a flared gable roof with a fan light in the gable.

A set of eight concrete steps with two-tiered, lava rock cheek walls ascend from the driveway under the porte cochere to the front porch of the house. A pair of fluted Doric columns rise from the top of each cheek wall to frame the top of the steps. The front porch runs across the façade and is 67' long and 12'- 1" wide. It has a tongue and groove floor and a scored tongue and groove ceiling. The porch, as well as the first story of the house is four bays long, and a pair of fluted Doric columns demarcates the four bays, while at the porch's two outside corners a group of three Doric columns stand.

A set of six concrete steps exit the porch on its north side, and on the east side the porch flows into a brick paved terrace. The terrace is one step below the porch and its paving is laid in a basket weave pattern. The terrace is 13'-10" x 50'- 6". A 30" high perforated brick balustrade encircles the terrace, with a set of nine brick steps with lava rock cheek walls breaking the south wall, and another two brick steps exiting the patio to the east.

In the east wall of the porch, doors in each of the bays, access the house. The southern-most bay has a centered fifteen pane door with a fixed, three pane transom. The door retains its original glass knob and hardware. Adjoining the door to either side

Yokohama Specie Bank Manager's House
Name of Property

Honolulu, HI
County and State

is a 1 x 1 double hung sash window. The second bay from the south aligns with the porte cochere and contains the main entry to the house. This entry has a set of fifteen pane double doors with eight pane sidelights. Above the doors is a four pane fixed transom, while above the sidelights are two pane fixed transoms. The doors retain their original glass knobs and hardware. The third bay from the south is similar to the southern-most bay, while the northern-most bay has a fifteen pane door which retains its original glass knob and hardware, and is adjoined on either side by a twelve pane fixed window. The door and each window have three pane transoms. All the doors off the porch retain their original screen doors and their original handles and hardware.

The main entry to the house opens into an entry hall. The hall has oak floors with 11" high baseboards and a 10'- 5" high plaster ceiling. An original light with a cylindrical shade hangs from the center of the ceiling. Openings to the north and south sides of the hall are framed by fluted Ionic columns, and another two fluted, Ionic columns stand to the east side and demarcate the hall's entry function from the stair to the second floor. The columns carry a dark stained frieze and denticulated cornice, which rises to the ceiling. Centered in the frieze above the three openings is the Yokohama Specie Bank's crest.

The east end of the entry hall is dedicated to the stairway to the second floor. This stair runs up the north wall of the hall and has fir steps and a turned balustrade, which at the bottom of the stair terminates in a volute newel post. A single panel door on the south side of the stair accesses a storage space under the stair. The door retains its glass pull. In the rear, east wall of the hall a single panel door, which has a new knob accesses a half bath, which has been remodeled. A 1 x 1 double hung sash window is in the room's east wall. Near the rear of the entry hall, in its south wall a single panel door, which retains its original glass knob and hardware leads into a sitting room, while in the north wall just before the start of the stair a similarly intact single panel door opens into an office.

The 8'- 4" x 8'- 6" opening in the entry hall's east wall flows into a living room. The room has an oak floor with 11" baseboards and its ceiling is coffered along its periphery. Two historic inverted dome ceiling lights with frosted glass hang from the ceiling, while in the four corners of the coffered ceiling, flush metal ceiling lights are located. The west wall of the room has a previously described door which leads out to the porch. In the room's south wall is a double door, with a fourteen pane transom. Each door has ten panes and opens on the brick patio. The door is one brick step above the patio. To the north of the door is a wide double hung sash window which has a Queen Anne upper sash with an elongated pentagrams surmounted by diamonds pattern. A picture rail runs around the room above the door and window frames, and two modern sconces are on both the east and west walls. In the center of the east wall a pair of ten pane, bi-fold doors open into a rear sitting room.

The sitting room has an oak floor and a 10'- 4" high ceiling. In its south wall a pair of ten pane doors with a fourteen pane transom, open on the patio, while in its east wall there

Yokohama Specie Bank Manager's House
Name of Property

Honolulu, HI
County and State

is a wide double hung sash window with a Queen Anne upper sash similar to the one in the living room. To either side of the window is a double hung sash window with a Queen Anne upper sash with a multi-diamond pattern. A single panel door with its original glass knob and hardware is in the room's north wall and leads out to the entry hall.

The 7' x 7' opening in the entry hall's north wall leads into the dining room. Two fifteen pane doors, with their original glass knobs and hardware can close the room off from the entry hall. The room has oak floors and a canec ceiling with two exposed beams running across its width. An already described door in its west wall opens on the front porch. In its east wall there is a built-in koa buffet. The buffet has a counter with a beveled mirror back wall. Below the counter there are four long drawers, and to each side of the drawers is a single panel cabinet which is surmounted by a drawer. Above the counter is a cabinet with a pair of leaded glass doors which each have three opalescent diamond accents. To either side of the counter is a cabinet, which extends to the top of the buffet and also has a leaded glass door with three opalescent glass diamond accents. To the south of the buffet a single panel door with its original glass knob and hardware opens on an office, while a swinging door to its north opens on a short hall which accesses the kitchen.

The diminutive hall has a fir floor and scored tongue and groove walls and ceiling. It has doors in all four walls. In addition to the swinging door from the dining room, a single panel door with a new knob in the east wall opens into a bathroom, while a door in the south wall enters an office, and the one to the north accesses the kitchen. Both the north and south wall doors retain their original glass knobs and hardware. The office has a fir floor and plaster ceiling. Its walls are of scored tongue and groove, and there are two 1 x 1 double hung sash windows in its east wall. A crystal chandelier hangs from the center of its ceiling. Along its south wall there is a projecting, built-in cabinet with a counter. Below the counter there are four drawers, and below the drawers, two pair of single panel cabinet doors. The doors and drawers retain their glass pulls. Above the counter are three shelves which are enclosed by four six-pane sliding doors. Also in the south wall there is a single panel door, which retains its glass knob, which opens on the entry hall.

The bathroom to the east of the mini-hall has been remodeled, but retains its scored tongue and groove ceiling and walls, and also a 1 x 1 double hung sash window in its east wall. The kitchen, which is entered from the hall's north door, has also been remodeled. It has an engineered wood floor and all new cabinetry, which are in the same locations as the historic cabinetry. Two 1 x 1 double hung sash windows are in the kitchen's east wall, and a doorway with no door in the north wall leads into the laundry room. This room also has been remodeled and has three 1 x 1 vinyl double hung sash windows in its north wall and one in its east wall. A modern door in the north wall opens on a concrete step and pad that opens out to the side yard.

Yokohama Specie Bank Manager's House
Name of Property

Honolulu, HI
County and State

A single panel door with its glass knob and original hardware, in the west wall of the kitchen goes out to a sun porch. The sun porch has a fir floor and a scored tongue and groove ceiling and walls. A modest crown molding serves as an intermediary between wall and ceiling. The north wall is dominated by three pairs of eight lite casement windows with interior screens. Each casement window has a two pane fixed transom. The west wall also has a span of glass running across it with its centered, fifteen pane door, which is flanked by twelve pane fixed windows. The door and each window feature a three pane fixed transom. A double doorway is in the south wall of the sun porch and enters into the dining room. The doors each have fifteen panes and retain their original glass knob and hardware.

The second floor is accessed by the stair in the entry hall. The stair rises eleven steps to a landing and takes a quarter turn to the south and rises another two steps to a second landing. Here the stair makes a quarter turn to the west and travels another seven steps to the second floor. The stair has a turned balustrade, and at the top of the stair the 3' high balustrade continues to enclose the west side of the stairwell. Intermediate newel posts are between the first and second landing and the balustrade has goosenecks and top up easings. In the east wall of the stairwell two pairs of six lite casement windows are surmounted by a large fanlight.

The stair opens up on a lateral running hall. The hall, and all rooms on the second floor have fir floors and 9'-5" high, plaster ceilings, unless otherwise noted. Similarly, all the doors are single panel and retain their original glass knobs and hardware unless otherwise noted. The second floor's baseboards are 11" high. Bedrooms are in the four corners of the second floor.

The bedroom in the northeast corner of the house is entered from a door in the hall's east wall. The room has a single 1 x 1 double hung sash window in its north wall and two similar windows in its east wall. A closet in its south wall features a single panel door.

The bedroom in the northwest corner is entered from a door in the hallway's west wall. The room has a Wyatt window, which is comprised of three 1 x 1 double hung sash windows in its west wall, the center window is 35" wide, while the two flanking windows are 23". A single 1 x 1 double hung sash window is in its north wall, and a single panel door in its south wall opens on a closet.

Between the two bedrooms at the north end of the house there is a bathroom which is entered from the hallway's north wall. The bathroom has a small, white, hexagonal tile floor and a 4'-5" high, white, rectangular, ceramic tile wainscot. It has dry wall walls and a scored tongue and groove ceiling. A 1 x 1 double hung sash window is in its north wall. An original medicine cabinet with a beveled mirror door with its original latch is in the west wall. A shower with ceramic tile walls is in the southwest corner of the room.

Yokohama Specie Bank Manager's House

Honolulu, HI

Name of Property

County and State

At the south end of the hall, the bedroom in the southwest corner of the house is entered through a single panel door in the hall's west wall. It has a Wyatt window in its west wall, the same size as the one in the northwest bedroom. In its south wall is a pair of 1 x 1 double hung sash windows. A 6" wide picture rail encircles the room, and a closet with a single panel door is in its north wall.

The bedroom in the southeast corner of the house is entered from the hall's east wall. It has a pair of 1 x 1 double hung sash windows in its south wall, and two 1 x 1 double hung sash windows in its east wall. It also has a picture rail running around its walls, and features 11" high baseboards. A door in its west wall opens leads into a dressing room. The dressing room has a corner sink in its southeast corner and a 51" high, scored tongue and groove wainscot. There is a pair of 1 x 1 double hung windows in its south wall, and a closet with a single panel door projects from its northwest corner.

A second bathroom is on the second floor to the north of the stairwell. The bathroom is entered from a door in the hall's east wall and is one step above the hallway floor. It has been remodeled but retains its 1 x 1 double hung sash window in its east wall, as well as a closet with a single panel door in its north wall. The room also retains its original tub, medicine cabinet with beveled mirrored door, and the white, rectangular ceramic tile wainscot. The latter is 53" high.

Across the hall from the stairwell is a large sitting room. A set of fifteen pane double doors in the west wall of the hall opens on the room. The doors retain their original glass knobs and original hardware. The room has an oak floor and a 9'-4" high canec ceiling. Its walls are wallpapered and a picture rail runs around the room. A single panel door in the south wall opens on a closet, and a similar door in its north wall opens on a stair to the attic. The stairwell features scored tongue and groove walls and sixteen steps wind up to the attic. The attic is unimproved, with a plywood floor oly in the area immediately to the east of the stairs. The roof has redwood framing and includes two Queen Post trusses. The attic is ventilated by a fanlight in the front facing gable lording over the porte cochere, and by a hip roof dormer on the east side, which has two awning windows, each with a Union Jack muntin pattern.

In the west wall of the sitting room is a hinged fifteen pane door, which retains its original glass knob and original hardware. To either side of the door is a 1 x 1 double hung sash window. The door opens on an enclosed lanai, which is under the gable roof with a fanlight which projects from the roof of the house. The gable end forms a pediment, and its closed eaves feature consoles.

The enclosed lanai has scored tongue and groove walls and ceiling. The lanai has three pairs of single pane casement windows with interior screens, in its north and south walls. Each pair of windows has a single pane screen casement. The west wall has a centered set of two screen doors, which retain their original handles and hardware. To either side of the screen doors is a pair of single pane casement windows with interior screens. A screened. single pane transom is above each door and window. The doors

Yokohama Specie Bank Manager's House
Name of Property

Honolulu, HI
County and State

open out onto the deck which is the porte cochere's roof. In addition to the deck on top of the porte cochere, there are decks to the north and south of the enclosed lanai, with a balustrade similar to that above the porte cochere. These decks are the roof of the front porch. The deck on the north end wraps around to the north side of the house, covering the sun porch, as well.

In addition to its two stories and attic, the house also has a partial basement at its northeast corner. It is under the laundry room and sun porch. Twelve concrete steps descend to the basement, running parallel to the west side of the single story, laundry room wing. The steps' east wall is of lava rock and its west wall is poured in place concrete. At the bottom of the steps there are two single panel doors, each of which retains its original metal knob and hardware. One door is in the south wall of the stairwell and the other in the east side. Both doors have narrow, single pane, obscure glass, fixed transoms. The obscure glass has a star burst pattern. Both doors open into the basement.

The L-shaped basement has a scored concrete floor and cement skim coated, lava rock walls. The ceiling of the basement is open to the 2' x 8" floor joists and floor under deck. There are three jalousie windows in the basement's east wall and one in its west wall. Another two jalousie windows are in its north wall. The west wall window looks out on the steps, while the other windows look out into light wells. The light wells have concrete floors and outer walls, while the inner walls are lava rock. Pipe railings run on top of the outer peripheries of the light wells and stairwell.

The Yokohama Specie Bank Manager's House very much retains its historic integrity. The 101 year old house has undergone extremely few changes, with the primary ones being the remodeling of the kitchen, laundry room, and bathrooms. These are all secondary spaces, and even though remodeled the bathrooms still retain a number of original features. Other changes such as new bedroom ceiling lights, living room sconces and an occasional door knob, are so miniscule to be non-existent when compared to the remaining historic fabric of the house, and do not detract from the historic character of the house. Similarly, the two non-contributing buildings on the property are on a much smaller scale and in the case of the garage is located sufficiently removed from the house to not impinge on its historic character. Similarly the work studio is located at the rear of the house in an inconspicuous corner.

As such the property retains:

1. its historic location, as it remains precisely where it was constructed.
2. its historic setting as its neighborhood remains residential, and the houses on the surrounding lots are sufficiently removed and offer no obstructions to the flowing lawn..
3. its historic design as minimal alterations have transpired.
- 4 its historic materials as minimal alterations have transpired.
- 5 its historic workmanship as minimal alterations have transpired.
- 6 its historic feeling as minimal alterations have transpired.
- 7 its historic association as minimal alterations have transpired.

Yokohama Specie Bank Manager's House
Name of Property

Honolulu, HI
County and State

8. Statement of Significance

Applicable National Register Criteria

(Mark "x" in one or more boxes for the criteria qualifying the property for National Register listing.)

- A. Property is associated with events that have made a significant contribution to the broad patterns of our history.
- B. Property is associated with the lives of persons significant in our past.
- C. Property embodies the distinctive characteristics of a type, period, or method of construction or represents the work of a master, or possesses high artistic values, or represents a significant and distinguishable entity whose components lack individual distinction.
- D. Property has yielded, or is likely to yield, information important in prehistory or history.

Criteria Considerations

(Mark "x" in all the boxes that apply.)

- A. Owned by a religious institution or used for religious purposes
- B. Removed from its original location
- C. A birthplace or grave
- D. A cemetery
- E. A reconstructed building, object, or structure
- F. A commemorative property
- G. Less than 50 years old or achieving significance within the past 50 years

Yokohama Specie Bank Manager's House
Name of Property

Honolulu, HI
County and State

Areas of Significance

(Enter categories from instructions.)

architecture

Period of Significance

1925

Significant Dates

1925

Significant Person

(Complete only if Criterion B is marked above.)

Cultural Affiliation

N/A

Architect/Builder

architect: Edwin C. Pettit and Hego Fuchino

Yokohama Specie Bank Manager's House
Name of Property

Honolulu, HI
County and State

Statement of Significance Summary Paragraph (Provide a summary paragraph that includes level of significance, applicable criteria, justification for the period of significance, and any applicable criteria considerations.)

The Yokohama Specie Bank Manager's House is significant on the local level under criterion C, as a good example of a colonial revival style house built in Honolulu during the 1920s. The house includes a number of distinctive features and is typical of its period in its design, materials, workmanship and methods of construction.

The 1925 period of significance was chosen in accordance with National Register Bulletin 16A as 1925 is the year of construction.

Narrative Statement of Significance (Provide at least **one** paragraph for each area of significance.)

The Colonial Revival style was a nationalistic design movement in the United States. It sought to revive elements of architectural and interior design from America's colonial past. The Philadelphia Centennial Exhibition of 1876 reawakened Americans to their heritage, and generated an interest in colonial design. This movement gained momentum in the 1890s, especially after the 1893 Columbian Exposition in Chicago and was accelerated by the early 20th century. Colonial Revival sought to follow the architecture of the Revolutionary War period which drew strongly upon Georgian architecture of Great Britain, but did not generally produce exact replicas of early buildings. The revival style houses were usually of a larger size than those they sought to emulate. In the mainland they are stately and distinguished, formal rather than cute or romantic.

Structures are typically, but not exclusively, two stories, frequently with a lateral running gable roof. They have a symmetrical front facade with an accented, centered entry, and evenly spaced windows on either side of it. Features borrowed from colonial period houses include elaborate entries, often with decorative fanlights and sidelights, symmetrical, multi-pane, sash windows flanking the front entrance, pilasters and classical columns, dentil trim under the eaves, and Palladian windows.

In Hawaii, the style frequently assumed a more informal character, as is somewhat the case in the Yokohama Specie Bank Manager's House with its brick paved patio adjoining the south side of the house, its multiple entry points off the front lanai, and its balanced, but asymmetric massing. The colonial revival style was a popular domestic architectural form in Hawaii from the late 1890s through the 1930s, and was frequently associated with houses of a more imposing scale.

Yokohama Specie Bank Manager's House
Name of Property

Honolulu, HI
County and State

The Yokohama Specie Bank Manager's House is a superb example of the colonial revival style in Hawaii. With its fluted Doric columns, imposing porte cochere, balanced composition, fanlights, clapboard siding, denticulated cornices, closed overhanging eaves with consoles, and meticulously appointed interior, the house typifies the style. Its hip roof is also commonly associated with the style. The porte cochere projecting from the front entry gives the effect of a Georgian portico and adds to the substantiality of the house, as does the pediment-like gable roof over the second floor's enclosed lanai with its fanlight.

However, the house is not a strict interpretation of the colonial revival style, having been splendidly adapted to its Island situation. The asymmetric façade with its sun porch at one end and terrace at the other, and its multiple doorways from the main rooms to the porch and terrace well reflect the informality of the style as it was adopted in Hawai'i's lifestyle. The house's incorporation of Queen Anne windows in the living room and sitting room is a distinctive and very late manifestation of such windows in Hawai'i. The access to the outside via second floor balconies, as well as front lanai and side patio well addresses Hawai'i's climate, as also do the sun room's sliding windows and the open flow of the public rooms on the ground floor. The use of lava rock in the foundation and ohia in the floors further associates the house to the Islands through the use of local materials. As such, the Yokohama Specie Bank Manger's House is architecturally significant as an excellent example of the colonial revival style and its adaptations to Hawai'i.

Although a fair number of these two-story colonial revival residences still stand, only around a dozen have been placed in the Hawaii or National Registers of Historic Places. These include: the Carr residence (2727 Manoa Road), Hind residence (2361 Manoa Road), Jennings residence (1176 Alewa Drive), Mann residence (2102 Liliha Street), Tompkins residence (2339 Pikake Place), Sinclair residence (2726 Hillside Avenue), Mist residence (2433 Ferdinand Street), Ross residence (2626 Terrace Drive), Wayson residence (2828 Kahawai Street) and two houses in the C. B. Ripley homestead in Nu'uuanu. None of these houses have as an imposing an entry, with the possible exception of the Ross residence.

History

On July 13, 1924, the *Honolulu Advertiser* reported that the residents of Mānoa were in "the throes of discussion over its future as a home-section, removed from business and industrial activities," as a "wealthy Japanese concern" was looking for a large parcel of land on which to build a mansion for its manager. An offer had been made on a large parcel "near the foot of Manoa hill," but when it was learned who the prospective buyer was, and fearing the construction of a high class teahouse entertainment place, another purchaser stepped in and obtained the property. Another parcel was located by the buyer in the recently opened Castle Terrace subdivision, but owners of neighboring parcels vehemently protested to the agent and the property was withdrawn from the

Yokohama Specie Bank Manager's House
Name of Property

Honolulu, HI
County and State

market. The Japanese buyer, at the time of the newspaper article, was looking for a property further in the back of Mānoa valley, where an owner was open to “a ‘high class’ Japanese buying property near him,” but others expressed the concern, “that after the first buyer, no one can tell, in these days of subdividing and splitting up lands for erecting small bungalows, just who the future occupants may be.” [*Advertiser*, July 13, 1924, page 13]

Undeterred, the Yokohama Specie Bank continued their quest for a suitable location on which to build a house for its manager, and on December 7, 1924, the *Advertiser* reported the bank's purchase of Mrs. Gertrude Ivers Straub's “beautiful homesite and large lot on Manoa Road hill between the Swanzy and Ranny Scott premises.” The Straub residence was dismantled and reconstructed in the Woodlawn tract. [*Advertiser*, December 7, 1924, page 17]

The new residence was designed by Edwin C. Pettit and Hego Fuchino, [*Advertiser*, April 4, 1925, page 1] and completed in 1925 for the manager of the Yokohama Specie Bank, who at that time was Ichiro Nakao. Nakao came to Hawai'i in 1919 as the bank's sub-manager, and by 1922 was manager of the bank. In addition to his duties at the bank, Nakao also served as president of the Japanese Chamber of Commerce and as president of the Japanese Society of Hawaii, a non-government organization established to promote friendship between Japan and the United States, further the welfare of Hawaii's Japanese residents, and promote the general welfare. [*Star Bulletin*, May 14, 1924, page 20 and *Advertiser*, November 28, 1925, page 4] He remained in the Islands as head of the Honolulu branch until 1927.

The Yokohama Specie Bank was founded in 1880 in Yokohama, Japan as a foreign exchange bank to support the financial needs of Japan's foreign trade. It came to dominate the Japanese trade finance market, and grew to be one of the world's largest foreign exchange banks. By the 1920s the bank accounted for nearly fifty percent of the foreign exchange transactions for Japanese imports and exports, and by the end of the decade was Japan's second largest bank, only behind the Bank of Japan. During the 1880s it established branches in New York and London, and then in Shanghai, Hong Kong and Bombay during the 1890s.

The Yokohama Specie Bank opened a sub-branch under the jurisdiction of the London branch in San Francisco in 1886, and a sub-branch in Honolulu in 1892. These banks not only handled foreign exchange transactions, but also provided basic banking services to Japanese immigrants living in California and the Islands, including sending money to family members in Japan. The San Francisco bank attained branch status in 1896, and a year later Honolulu was also made an independent branch. The Honolulu branch remained in operation in the city until December 7, 1941, when Governor Poindexter closed it and two other Japanese owned banks operating in the Territory. In February 1942 the United States Treasury commenced liquidation of the three banks' more than twelve million dollars worth of assets, [Hibbard, page 95, Maeda, *Star Bulletin*, October 26, 1892, page 1] and on August 14, 1942, the house was sold at auction to Honolulu jeweler Boo Leong and his wife Chang She Leong. [*Star Bulletin*,

Yokohama Specie Bank Manager's House
Name of Property

Honolulu, HI
County and State

August 17, 1942, page 1] The house remains in the ownership of Mr. Leong's direct descendants.

This is the only building on which Pettit and Fuchino are known to have collaborated. Hego Fuchino (1888-1961) was born in Saga Prefecture, Japan, and educated at Saga Technical College. He immigrated to Hawaii in 1907 and ten years later graduated from the University of Hawaii with a degree in Engineering. He became an assistant engineer with the Oahu Railway and Land Company, and in 1919 opened his own architecture and engineering office. He was the first person of Japanese ancestry to obtain a license to practice architecture in Hawaii. Shortly after the bombing of Pearl Harbor Fuchino was arrested and sent to an internment camp in Wisconsin, where he was held for five years. Upon his release, he reopened his practice in Hawaii. Among the buildings he designed are the Izumo Taishakyo Mission, the Makiki Christian Church, and the Soto Zen Temple on Nuuanu Avenue. [Hibbard, page 137]

Edwin Pettit came to Hawaii from Seattle in 1910 and went to work in the office of H.L. Kerr, soon rising to the position of head draftsman, and in 1919 became a partner in the firm. [Advertiser, October 6, 1919, page 3] Prior to Pettit joining Kerr's office, Kerr had handled the design of the Yokohama Specie Bank Building (1909) at the corner of Merchant and Bethel Streets. During the 1920s Pettit worked several years on his own, and also for the firms of Reynolds & Wilson and Davis & Fishborne, as well as the Building Department. He left the Islands circa 1928.

Yokohama Specie Bank Manager's House
Name of Property

Honolulu, HI
County and State

9. Major Bibliographical References

Bibliography (Cite the books, articles, and other sources used in preparing this form.)

City and County Tax Office records

Polk's City Directories for Hawaii, 1918-1930

Hibbard, Don, *Buildings of Hawaii*, Charlottesville, Virginia: University of Virginia Press, 2011

Maeda, Ryosuke, "History of YSB," Japanese American Historical Archives, 2025, viewed on March 21, 2026 at:

<https://jaha.jcccnc.org/history-of-ysb/index.html>

"Japanese Bank," *Star Bulletin*, October 26, 1892, page 1

"Kerr and Pettit in New Partnership," *Honolulu Advertiser*, October 6, 1919, page 3

"Japanese Society Has New Quarters," *Star Bulletin*, May 14, 1924, page 20

"Manoa Valley in Throes of Weighty Talk," *Honolulu Advertiser*, July 13, 1924, page 13

"Straub Lot Sold; Bank Makes Buy," *Honolulu Advertiser*, December 7, 1924, page 17

"Fine New Home to Rise in Manoa," *Honolulu Advertiser*, April 4, 1925, page 1

"Ichiro Nakao New President of Japanese Chamber," *Honolulu Advertiser*, November 28, 1925, page 4

"Leong Boo Family to Occupy Home of Japan Bank Manager," *Star Bulletin*, August 17, 1942, page 1

Yokohama Specie Bank Manager's House
Name of Property

Honolulu, HI
County and State

Previous documentation on file (NPS):

- preliminary determination of individual listing (36 CFR 67) has been requested
- previously listed in the National Register
- previously determined eligible by the National Register
- designated a National Historic Landmark
- recorded by Historic American Buildings Survey # _____
- recorded by Historic American Engineering Record # _____
- recorded by Historic American Landscape Survey # _____

Primary location of additional data:

- State Historic Preservation Office
- Other State agency
- Federal agency
- Local government
- University
- Other
- Name of repository: _____

Historic Resources Survey Number (if assigned): _____

10. Geographical Data

Acreage of Property .3929

Use either the UTM system or latitude/longitude coordinates

Latitude/Longitude Coordinates

Datum if other than WGS84: _____

(enter coordinates to 6 decimal places)

1. Latitude: 21.035797 Longitude: -157.829208

2. Latitude: Longitude:

3. Latitude: Longitude:

4. Latitude: Longitude:

Yokohama Specie Bank Manager's House
Name of Property

Honolulu, HI
County and State

Or
UTM References

Datum (indicated on USGS map):

NAD 1927 or NAD 1983

- | | | |
|----------|-----------|-----------|
| 1. Zone: | Easting: | Northing: |
| 2. Zone: | Easting: | Northing: |
| 3. Zone: | Easting: | Northing: |
| 4. Zone: | Easting : | Northing: |

Verbal Boundary Description (Describe the boundaries of the property.)

The property being nominated includes all the property owned by Marisa Lau K.C. Trust in 2026 as described by Tax Map Key (1) 2-5-001: 001.

Boundary Justification (Explain why the boundaries were selected.)

This is the parcel of land associated with this building since its construction.

Yokohama Specie Bank Manager's House
Name of Property

Honolulu, HI
County and State

11. Form Prepared By

name/title: Don Hibbard
organization: self
street & number: 45-287 Kokokahi Place
city or town: Kaneohe state: HI zip code: 96701
e-mail _____
telephone: (808)-542-6230
date: February 28, 2026

Additional Documentation

Submit the following items with the completed form:

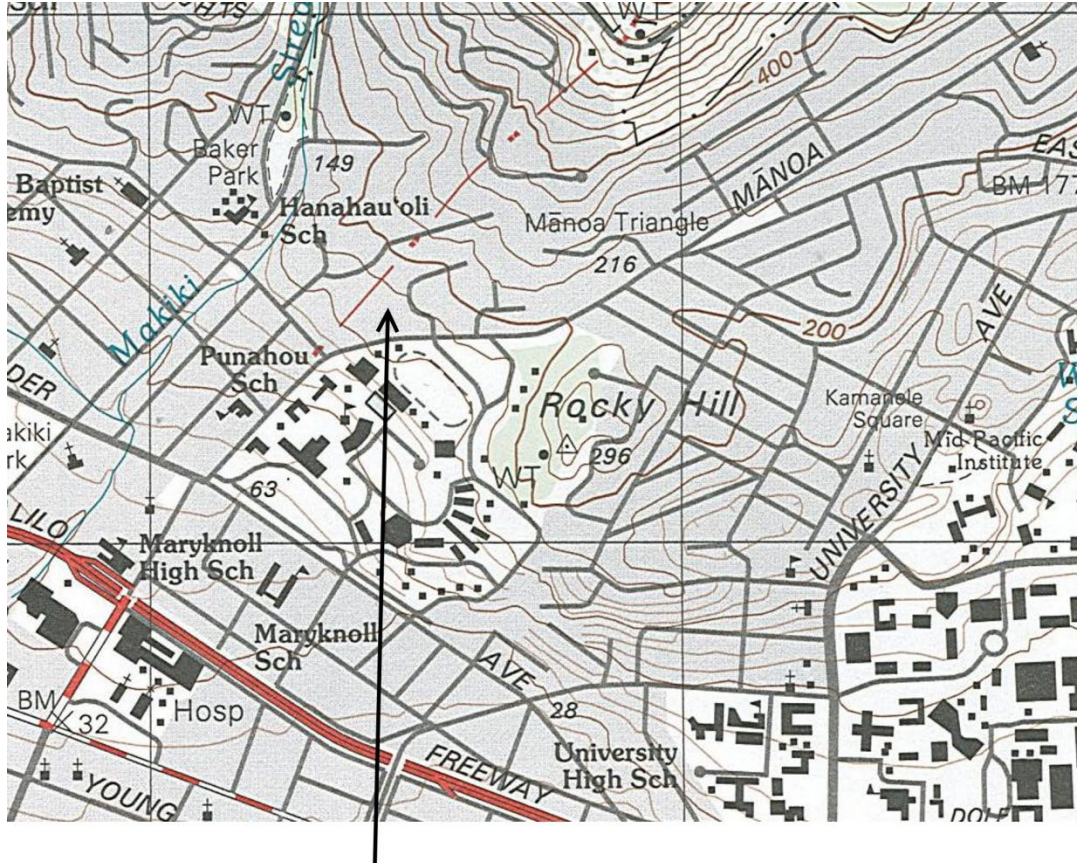
- **Maps:** A **USGS map** or equivalent (7.5 or 15 minute series) indicating the property's location.
- **Tax Map**
- **Photo Key** for historic districts and properties having large acreage or numerous resources. Key all photographs to this map.
- **Owner Information:**

Marisa Lau K.C. Trust
c/o Marisa Lau
1940 Manoa Road
Honolulu, HI 96822

Yokohama Specie Bank Manager's House
Name of Property

Honolulu, HI
County and State

USGS Map



Yokohama Specie Bank's Manager's House

USGS 7.5 minute series, Honolulu Quadrangle, 1998 (portion)

USGS map with arrow pointing to the location of the house

Yokohama Specie Bank Manager's House
Name of Property

Honolulu, HI
County and State

Tax Map

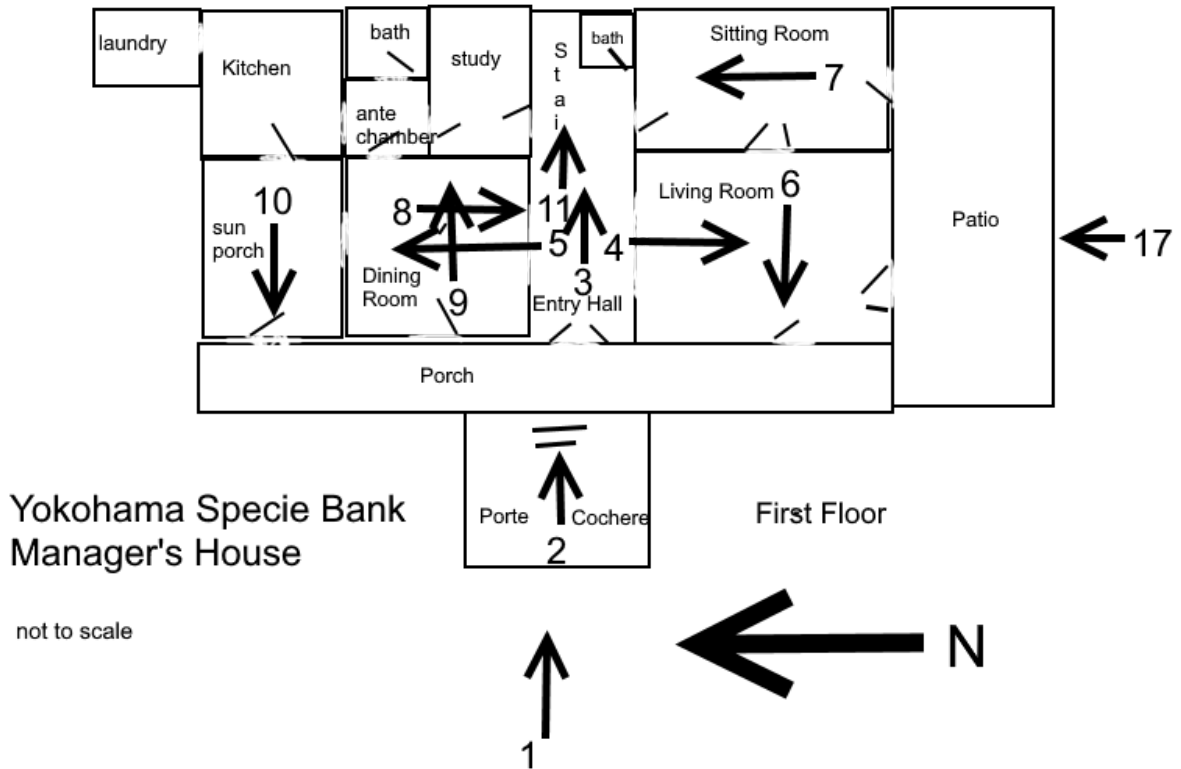


Tax Map with the nominated property outlined in blue and delineated by hash marks

Yokohama Specie Bank Manager's House
Name of Property

Honolulu, HI
County and State

Photo Key

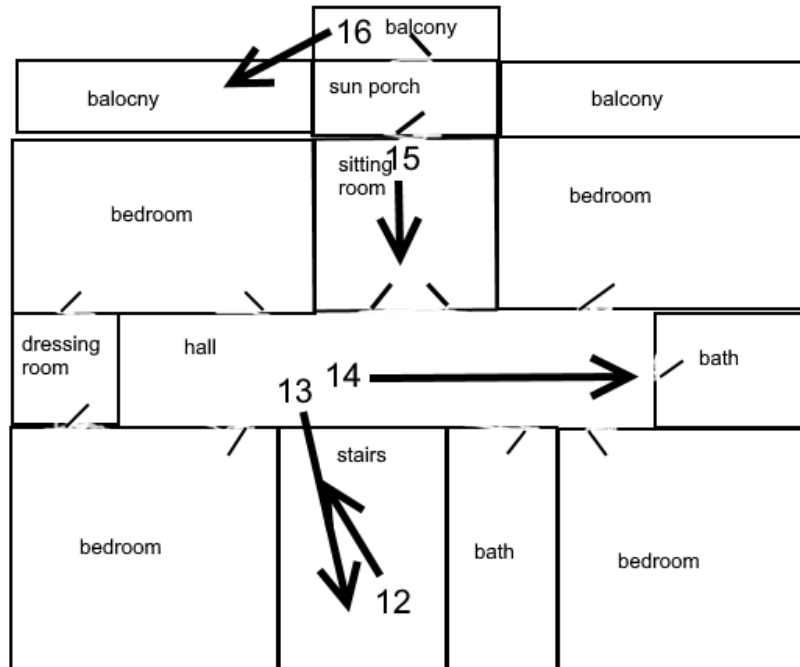


Floor Plan of the first floor of the house which includes numbered directional arrows depicting from where photographs were taken

Yokohama Specie Bank Manager's House
Name of Property

Honolulu, HI
County and State

Photo Key



Yokohama Specia Bank
Manager's House
Photo Key

Second Floor

not to scale



Floor Plan of the second floor of the house which includes numbered directional arrows depicting from where photographs were taken

Yokohama Specie Bank Manager's House
Name of Property

Honolulu, HI
County and State

Photographs

Submit clear and descriptive photographs. The size of each image must be 1600x1200 pixels (minimum), 3000x2000 preferred, at 300 ppi (pixels per inch) or larger. Key all photographs to the sketch map. Each photograph must be numbered and that number must correspond to the photograph number on the photo log. For simplicity, the name of the photographer, photo date, etc. may be listed once on the photograph log and doesn't need to be labeled on every photograph.

Photo Log

Name of Property: Yokohama Specie Bank Manager's House

City or Vicinity: Honolulu

County: Honolulu

State: HI

Photographer: Kikuyo Hibbard

Date Photographed: February 13, 2026

Description of Photograph(s) and number, include description of view indicating direction of camera:

1. Drone view of the front of the house from the west
2. View of the entry from the west
3. View of the entry hall from the west
4. View of the living room from the entry hall from the north
5. View of the living room with entry hall, dining room and enclosed lanai in the background from the south
6. View of the living room from the east
7. View of sitting room from the south
8. View of the dining room from the north, entry hall and living room in background
9. View of the dining room buffet from the west
10. View of the enclosed lanai from the east
11. View of the stair from the west
12. View of the stair landing from the north from the foyer
13. View of casement windows and fanlight at stair landing from the west
14. View of the second floor hall from the south
15. View of second floor sitting room from the west
16. View of the second story balustrade from the northwest
17. View of steps to patio, patio balustrade and patio entrance to living room from the south

Yokohama Specie Bank Manager's House
Name of Property

Honolulu, HI
County and State

1 of 17.



Drone view of the front of the house from the west

Yokohama Specie Bank Manager's House
Name of Property

Honolulu, HI
County and State

2 of 17



View of the entry from the west

Yokohama Specie Bank Manager's House
Name of Property

Honolulu, HI
County and State

3 of 17



View of the entry hall from the west

Yokohama Specie Bank Manager's House
Name of Property

Honolulu, HI
County and State

4 of 17



View of the living room from the entry hall from the north

Yokohama Specie Bank Manager's House
Name of Property

Honolulu, HI
County and State

5 of 17



View of the living room with entry hall, dining room and enclosed lanai in the background from the south

Yokohama Specie Bank Manager's House
Name of Property

Honolulu, HI
County and State

6 of 17



View of the living room from the east

Yokohama Specie Bank Manager's House
Name of Property

Honolulu, HI
County and State

7 of 17



View of sitting room from the south

Yokohama Specie Bank Manager's House
Name of Property

Honolulu, HI
County and State

8 of 17



View of the dining room from the north, entry hall and living room in background

Yokohama Specie Bank Manager's House
Name of Property

Honolulu, HI
County and State

9 of 17



View of the dining room buffet from the west

Yokohama Specie Bank Manager's House
Name of Property

Honolulu, HI
County and State

10 of 17



View of the enclosed lanai from the east

Yokohama Specie Bank Manager's House
Name of Property

Honolulu, HI
County and State

11 of 17



View of the stair from the west

Yokohama Specie Bank Manager's House
Name of Property

Honolulu, HI
County and State

12 of 17



View of the stair from first landing from the northeast

Yokohama Specie Bank Manager's House
Name of Property

Honolulu, HI
County and State

13 of 17



View of casement windows and fanlight at stair landing from the west

Yokohama Specie Bank Manager's House
Name of Property

Honolulu, HI
County and State

14 of 17



View of the second floor hall from the south

Yokohama Specie Bank Manager's House
Name of Property

Honolulu, HI
County and State

15 of 17



View of second floor sitting room from the west

Yokohama Specie Bank Manager's House
Name of Property

Honolulu, HI
County and State

16 of 17



View of the second story balustrade from the northwest

Yokohama Specie Bank Manager's House
Name of Property

Honolulu, HI
County and State

17 of 17



View of steps to patio, patio balustrade and patio entrance to living room from the south

Paperwork Reduction Act Statement: This information is being collected for nominations to the National Register of Historic Places to nominate properties for listing or determine eligibility for listing, to list properties, and to amend existing listings. Response to this request is required to obtain a benefit in accordance with the National Historic Preservation Act, as amended (16 U.S.C.460 et seq.). We may not conduct or sponsor and you are not required to respond to a collection of information unless it displays a currently valid OMB control number.

Estimated Burden Statement: Public reporting burden for each response using this form is estimated to be between the Tier 1 and Tier 4 levels with the estimate of the time for each tier as follows:

- Tier 1 – 60-100 hours
- Tier 2 – 120 hours
- Tier 3 – 230 hours
- Tier 4 – 280 hours

The above estimates include time for reviewing instructions, gathering and maintaining data, and preparing and transmitting nominations. Send comments regarding these estimates or any other aspect of the requirement(s) to the Service Information Collection Clearance Officer, National Park Service, 1201 Oakridge Drive Fort Collins, CO 80525.