

United States Department of the Interior
National Park Service

National Register of Historic Places Registration Form

This form is for use in nominating or requesting determinations for individual properties and districts. See instructions in National Register Bulletin, *How to Complete the National Register of Historic Places Registration Form*. If any item does not apply to the property being documented, enter "N/A" for "not applicable." For functions, architectural classification, materials, and areas of significance, enter only categories and subcategories from the instructions.

1. Name of Property

Historic name: Peter and Nellie McLean Residence

Other names/site number: _____

Name of related multiple property listing:

N/A

(Enter "N/A" if property is not part of a multiple property listing)

2. Location

Street & number: 3240 Noela Street

City or town: Honolulu State: Hawaii County: Honolulu

Not For Publication: Vicinity:

3. State/Federal Agency Certification

As the designated authority under the National Historic Preservation Act, as amended,

I hereby certify that this ___ nomination ___ request for determination of eligibility meets the documentation standards for registering properties in the National Register of Historic Places and meets the procedural and professional requirements set forth in 36 CFR Part 60.

In my opinion, the property ___ meets ___ does not meet the National Register Criteria. I recommend that this property be considered significant at the following level(s) of significance:

___ national ___ statewide X local

Applicable National Register Criteria:

A ___ B X C ___ D

<p>_____</p> <p>Signature of certifying official/Title:</p> <p>_____</p> <p>State or Federal agency/bureau or Tribal Government</p>	<p>_____</p> <p>Date</p>
---	---------------------------------

<p>In my opinion, the property ___ meets ___ does not meet the National Register criteria.</p>	
<p>_____</p> <p>Signature of commenting official:</p> <p>_____</p> <p>Title :</p>	<p>_____</p> <p>Date</p> <p>_____</p> <p>State or Federal agency/bureau or Tribal Government</p>

Peter and Nellie McLean Residence _____ Honolulu
Name of Property

Hawaii _____
County and State

4. National Park Service Certification

I hereby certify that this property is:

- ___ entered in the National Register
- ___ determined eligible for the National Register
- ___ determined not eligible for the National Register
- ___ removed from the National Register
- ___ other (explain:) _____

Signature of the Keeper

Date of Action

5. Classification

Ownership of Property

(Check as many boxes as apply.)

- Private:
- Public – Local
- Public – State
- Public – Federal

Peter and Nellie McLean Residence Honolulu
Name of Property

Hawaii
County and State

Category of Property

(Check only **one** box.)

- Building(s)
- District
- Site
- Structure
- Object

Number of Resources within Property

(Do not include previously listed resources in the count)

Contributing	Noncontributing	
<u>1</u>	<u> </u>	buildings
<u> </u>	<u> </u>	sites
<u> </u>	<u> </u>	structures
<u> </u>	<u> </u>	objects
<u>1</u>	<u> </u>	Total

Number of contributing resources previously listed in the National Register None

6. Function or Use

Historic Functions

(Enter categories from instructions.)

Domestic/Single Dwelling

Current Functions

(Enter categories from instructions.)

Domestic/Single Dwelling

Peter and Nellie McLean Residence Honolulu
Name of Property

Hawaii
County and State

7. Description

Architectural Classification

(Enter categories from instructions.)

Modern

Hawaii regional

Materials: (enter categories from instructions.)

Principal exterior materials of the property: wood tongue and groove walls, concrete foundation, composition shingle roof, concrete block walls

Narrative Description

(Describe the historic and current physical appearance and condition of the property. Describe contributing and noncontributing resources if applicable. Begin with a **summary paragraph** that briefly describes the general characteristics of the property, such as its location, type, style, method of construction, setting, size, and significant features. Indicate whether the property has historic integrity.)

Summary Paragraph

The Peter and Nellie Mclean Residence is situated in a quiet residential neighborhood on the slopes of Diamond Head, above Kapiolani Park. The two story, modern style house faces east and sits on a large, sloping 29,915 square foot lot. The pavilion plan house has a concrete block first story and a 1" x 12" redwood tongue and groove, two story, rear bedroom wing. The house has a composition shingle, hip-gablet roof with overhanging eaves and exposed rafter tails, and sits on a poured in place, reinforced concrete foundation, with a timber post and pier foundation with horizontal slat aprons under the bedroom wing. A large, partially covered, rear lanai overlooks the expansive backyard with its mature monkeypod (*Samanea saman*), star fruit (*Averrhoa carambola*) and Singapore plumeria (*Plumeria obtusa*) trees, and inset balconies extend across both the front and rear of the bedroom/living room wing. The house is in excellent condition and has 4,234 square feet under roof. The house very much retains its integrity of design, materials, location, setting, workmanship, feelings and associations.

Narrative Description

The McLean residence sits below the grade of Noela Street on its west side, and is approached by a shallow, circular drive. Between the drive's entry and exit there is a planted area dominated

Peter and Nellie McLean Residence Honolulu

Hawaii
County and State

by mock orange (*Murraya paniculata*), tiare (*Gardenia taitensis*), and dragon tree (*Dracaena marginata*). A 17" high, 13" wide lava rock wall runs between the street and the planting area. The main wing of the house runs parallel to the entry drive, with a carport and passageway at the south end of the composition and an entry to the north end. The house follows a pavilion plan with the dining room, kitchen and maids room forming the single story, north-south main body of the house. The wing to the south includes the passageway and carport, with a single story laundry room and bedroom to their west. At the north end of the composition is a two-story living room-bedroom wing. The entry is placed at a diagonal at the south east corner of this wing.

The entry is approached from the driveway by a wide, concrete brick paved sidewalk. A Dutch door serves as the entry door, with each half of the door featuring three concentric, receding rectangles. The inner-most rectangle of the upper door is a single pane window. A concrete brick landing, approximately 2" above the level of the sidewalk, is outside the front door, and a projecting, flat roof with a triangular, paneled ceiling shelters the entry from the elements. A pergola extends eastward from the roof and wraps around the front side of the living room/bedroom wing. The pergola is supported at its outer edge by three 6" x 6" posts, while 4" x 6" boards, running east and west and north and south, form a top to the pergola. Under the pergola, beside the house, the concrete brick sidewalk of the front entry continues and then wraps partially down the north side of the house.

The front door opens on the living room. The living room has a stained, scored concrete floor with no baseboards, and a 8'-9" high canec ceiling. Its walls are of concrete brick. The west wall of the room features a centered fireplace which projects out into the room. The fireplace has a narrow brick hearth and no mantle, and one row of bricks, painted white, frames the fire box. The fireplace sits in a light wood frame, with an over mantle square niche. To either side of the fire place is a set of cabinets with two doors adorned by three concentric receding rectangles echoing the front door. The doors have square, wood pulls. Above each cabinet is a recessed counter and the wall behind the counter is mirrored. The north wall of the living room has two sets of three wood framed, single pane, sliding glass doors which retain their original hardware. The east wall of the room has a pair of wood framed, single pane, sliding glass windows, while the south wall has a pair of three panel doors which follow the motif of the front door and cabinet doors; however, instead of receding the rectangles advance. These doors open on the back lanai.

Also in the living room's south wall, a flat arched opening leads into the dining room. The dining room has a poured concrete floor and 4" high base boards. Its canec ceiling is 8'-5" high. In the room's east wall there are two 1 x 1 x 1 triple hung sash windows, while in its west wall four wood framed, two pane sliding windows and their matching screen doors open on the rear lanai. The north wall of the dining room features a set of shelves to either side of the entry from the living room. The set of shelving includes four shelves enclosed by a pair of sliding glass doors with wood frames with a cabinet below. The cabinet features two wood sliding doors. The south wall has a single panel, swinging door at its east end, which accesses the kitchen.

Peter and Nellie McLean Residence Honolulu

Hawaii
County and State

Name of Property

The kitchen has a more recent floor and a 8' - 4" high canec ceiling. It retains its original cabinetry, but has new countertops. An original stainless steel countertop with one sink runs across the west wall of the kitchen and above the sink is a pair of 1 x 1 double hung sash windows. A set of three such windows are across the room in the east wall. The south wall of the kitchen has a doorway with no door at its east end and a low partition wall adjoins the doorway, behind the stove, making an opening which looks out into a front-to-rear running hallway.

The hallway has the same floor and ceiling as the kitchen, as well as additional cabinetry and counter space. It has doors at both its east and west ends. The doors are similar, with each having a large square jalousie window in the lower panel and two rectangular jalousie windows in the upper. In-filled transoms are above both doors. The west door opens on the lanai and the east door opens on a concrete paved area where trash cans are located behind a low CMU wall. The paved area narrows into a sidewalk which leads out to the driveway. The kitchen door is framed on both sides by concrete bricks laid in an open pattern. While visible from the exterior this pattern is not visible from the interior.

A single panel door with a glass knob is in the south wall of the kitchen hall and opens on a large storage closet with shelves on three walls. A second single panel door, with its original metal knob and hardware, is in the south wall of the hall and opens on a lateral running hall that serves the former maid's quarters. The hall has a concrete floor and canec walls and ceiling. The west wall holds two single panel doors. One opens on a bathroom and the other a closet. The closet door retains its original metal knob and hardware, while the bathroom door has a new knob. Like the hall, the bathroom has canec walls and ceiling and a concrete floor. It has a 1 x 1 double hung sash window in its west wall, and an original shower appears to be in its southwest corner. The east side of the hallway has three single panel doors which open on storage shelves and a fourth which opens on a bedroom. The knob on the bedroom door is not historic.

The former maid's bedroom also has a concrete floor, and canec walls and ceiling. It has a pair of 1 x 1 double hung sash windows in its east wall, and a similar single window in its south wall. A single panel closet door with its original knob and hardware is in its north wall and three shelves inset in the west wall provide additional storage or a display area. The latter features a pair of glass sliding doors without any frame.

At the south end of the maid's quarters' hall a single panel door with its original metal knob and hardware, opens on a rear vestibule. This space has a 1 x 1 double hung sash window in its south wall and a two panel door, with a two pane window in its top panel, in the west wall opens on the rear lanai. The door has a single pane transom.

The 20' x 62' rear lanai occupies the space between the two wings of the house and is partially covered by a flat, built-up roof. The roof follows the pavilion plan of the house, with the "courtyard" area of the lanai open. The roof's outer periphery is supported by eight Egyptian columns with lotus leaf capitals. These are not original and derive from Havana Cabana cigar bar. They encase the original pipe columns. The lanai is paved with concrete bricks and stands

Peter and Nellie McLean Residence _____ Honolulu

Hawaii
County and State _____

Name of Property

4" above the backyard on a concrete brick foundation and features a 25" high balustrade of spaced concrete brick. Seven concrete brick steps lead down to the backyard.

The backyard is extensive and includes a number of mature trees including a star fruit, Monkey pod and Singapore plumeria. The back yard has two levels with an approximately 6'- 3" high lava rock retaining wall demarcating the top and lower yards. A set of concrete steps run parallel to the retaining wall, with three steps descending to a landing and then another five to the lower yard. The west end of the lower yards is secured by a chain link fence which borders a parking area for Pualei Circle. A mature bread fruit tree (*Artocarpis altilisis*) grows in the lower yard, as does a large Song of India (*Dracaena reflexa*).

A passageway runs from the lanai to the front of the house to separate the south wing of the house from the main body. The ceiling of the passageway displays the roof's deck and rafters, and has a concrete brick floor. The windows from the former maid's bedroom and rear vestibule open on the passageway. The passageway flows out onto the lanai at its west end, and its east end is enclosed by diamond pattern lattice with a centered lattice door. The south wall of the passageway is of horizontal slats and defines the north wall of the carport. The horizontal slat wall is composed of alternating 1" x 2" and 1" x 6" boards and a flat arched opening in the slat wall leads into the carport. The two car carport is open in the front, has slat side walls and its rear, west, wall is drywall. Its ceiling is the open structure of the roof.

The south wing of the house continues behind the carport and contains a laundry room and a one bedroom suite. The latter was designed by Honolulu architect George Hogan and constructed in 1981 to accommodate the second owner's father. The laundry room is entered from the lanai through a two panel door with a window in its top panel. Its floor continues that of the lanai, and its ceiling is similar to the garage and passageway. Its sidewalls are drywall, and a door similar to the entry door, which retains its original metal knob and hardware, is in the west wall and opens into the father's suite. The south wall is essentially made of screen with a two panel door, whose top panel is of screen, leading to the outdoors. The wall adjoining the door is of horizontal slats following the pattern of the carport's sidewalls, but with a mesh screen restricting the entry of insects.

The father's suite is entered through a solid core door off the lanai. It includes a bathroom, bedroom and sitting room. The sitting room features two sets of bronzed aluminum sliding doors which open on a deck at the west end of the suite. The deck terminates the south wing of the house. The suite's composition shingle roof continues the roof of the south wing, and its 12" tongue and groove walls are in keeping with the north wing's walls. As such this addition does not detract from the historic character of the house.

The north, bedroom wing is entered off the lanai through a door with two louvered panels. The door opens on an east-west running hall, which has a doorway with no door at its east end and a single panel door at its west end. The hall has a fir floor and a canec ceiling. The opening at the east end of the hall flow into a vestibule area which has a large, rectangular, two-pane, screened opening high in its south wall, which opens on the lanai. The vestibule has a canec ceiling and a fir floor and has cabinets and shelves lining its two side walls. It flows into a bathroom area with

Peter and Nellie McLean Residence Honolulu

Hawaii
County and State

Name of Property

a raised, built-in oval tub at the northeast corner. A pair of historic, wood sliding windows, with three horizontal panes, flanked by similarly designed fixed windows, is in the north wall behind the tub. The bathroom flows in a westerly direction to include a modern shower is a glass box bay window and also a new sink and toilet. This remodeled area has a laminate floor, 12" wide tongue and groove walls, and canec ceiling. A single panel door in the west wall of the bathroom opens on a downstairs bedroom. The bedroom has a fir floor and an 8'- 5" high canec ceiling. The walls are of 1" x 12" tongue and groove. In the bedroom's west wall is a set of four, single pane sliding windows, and in its north and south side walls are sets of four 1 x 1 double hung sash windows. All the windows are original. The east wall of the room is dominated by a built-in chest of drawers and two closets, each with three louvered, sliding doors. Between the two closets, a single panel door opens on the entry hallway.

Outside the bedroom door, two single panel closet doors, each of which has its original metal knob and hardware, are on either side of the hall. At the opposite end of the hall, a set of three sliding doors in the north wall of the hall. Storage space above the closet also is concealed behind three sliding doors. In the south wall of the hall a dogleg stair ascends to the second floor. The stair has wood treads and risers. Seven steps lead up to a landing, where the stair takes a quarter turn to the right and two steps ascend to another landing where another right quarter turn is executed with seven steps ascending to the second floor. A 1 x 1 double hung sash window is above the landing. As with all other parts of the bedroom wing, the stairwell's walls are of 1" x 12" tongue and groove and its ceiling is canec.

The stair opens on the second floor's east-west running hall. The hall has a bedroom at each end accessed through a single panel door with its original metal knob. The hall is naturally illuminated by a bank of three 1 x 1 double hung sash windows in its south wall. A single panel door in the south wall, near the west end of the hall opens on a closet, while at the other end of the hall, in the north wall a set of two sliding doors conceals another closet.

The two bedrooms are similar. Like the hallway, they have fir floors and canec ceilings, as well as 12" tongue and groove walls. Each of their sidewalls contains 1 x 1 double hung sash windows, with the front bedroom having a pair in its south wall and two pair in its north, while the rear bedroom has two in its south wall and a set of three in its north. Both have a set of four sliding doors with two horizontal pane windows in their end walls, which open up onto balconies. Both balconies are approximately 7' wide, while the front balcony is 18'- 6" long and the rear balcony extends 25'- 9". They are enclosed by a solid balustrade, which rises approximately 32" high with a 10" wide top rail. The opening between the top of the balustrade to the beam supporting the roof is 42". The top beam is supported by four chamfered 6" x 6" posts. The floors of both balconies are coated with elastomeric paint and the canec ceilings follow the slope of the roofs. The front balcony differs from the rear balcony by having decorative wood screens featuring a bowed pattern at its corners.

The walls opposite the balconies are dominated by a pair of closets, one to either side of the entry to the rear bedroom, and one to either side of the entry to the front bedroom's bathroom. The rear bedroom closets feature three sliding doors, and storage space above which also have three sliding doors. Built-in shelves are located at one end of the closets. The front bedroom has

Peter and Nellie McLean Residence Honolulu

Hawaii
County and State

Name of Property

a closet similar to the two rear bedroom one, and its other closet is narrower and has only two sliding doors up and down.

Each bedroom has its own bathroom, which is entered through a single panel door with its original metal knob and hardware. The doors are located in the same wall as the bedroom's closets. The front bedroom's bath has a pair of 1 x 1 double hung sash windows in its north wall. Centered on the windows is an original sink, which is flanked on the east by a built-in chest of drawers with wood pulls and on the west by a cabinet with two doors with wood pulls. Adjoining the dresser, in the room's east wall is a closet with a single pocket door. On the opposite wall from the sink a tub/shower with ceramic tile walls is inset into the west side of the south wall. A single panel door in the west wall connects the front and rear bedrooms' baths.

The rear bedroom's bath has a single 1 x 1 double hung sash window in its north wall. A built-in floor to ceiling cabinet with two doors is to the north of the entry door on the west wall. A shower is inset into the west side of the south wall.

The McLean residence very much retains its historic integrity. The few alterations, such as the remodeling of the bathroom for the ground floor bedroom, the replacement of some interior doors and door knobs, the Egyptian lanai columns, and kitchen counters are miniscule when compared to the overall gracious design of this early modern style residence and its grounds, which exude a vibrant historic sensibility.

Peter and Nellie McLean Residence _____ Honolulu
Name of Property

Hawaii _____
County and State

8. Statement of Significance

Applicable National Register Criteria

(Mark "x" in one or more boxes for the criteria qualifying the property for National Register listing.)

- A. Property is associated with events that have made a significant contribution to the broad patterns of our history.
- B. Property is associated with the lives of persons significant in our past.
- C. Property embodies the distinctive characteristics of a type, period, or method of construction or represents the work of a master, or possesses high artistic values, or represents a significant and distinguishable entity whose components lack individual distinction.
- D. Property has yielded, or is likely to yield, information important in prehistory or history.

Criteria Considerations

(Mark "x" in all the boxes that apply.)

- A. Owned by a religious institution or used for religious purposes
- B. Removed from its original location
- C. A birthplace or grave
- D. A cemetery
- E. A reconstructed building, object, or structure
- F. A commemorative property
- G. Less than 50 years old or achieving significance within the past 50 years

Areas of Significance

(Enter categories from instructions.)

Architecture

Peter and Nellie McLean Residence Honolulu
Name of Property

Hawaii
County and State

Period of Significance

1945

Significant Dates

1945

Significant Person

(Complete only if Criterion B is marked above.)

N/A

Cultural Affiliation

N/A

Architect/Builder

architect: Mark Potter
builder: Pacific Construction Company

Statement of Significance Summary Paragraph (Provide a summary paragraph that includes level of significance, applicable criteria, justification for the period of significance, and any applicable criteria considerations.)

The Peter and Nellie McLean Residence is significant on the local level under criterion C, as an excellent early example of a modern style house rendered in a Hawaii regional manner that was built in Honolulu in the mid-1940s. The house includes a number of distinctive features and is typical of its period in its design, materials, craftsmanship and methods of construction.

The 1945 period of significance was chosen in accordance with the instructions on how to complete a national register nomination form provided in National Register Bulletin 16A: “For architecturally significant properties, the period of significance is the date of construction and/or the dates of any significant alterations and additions.” As is noted in the above section, “significant dates”, 1945 is the year of construction.

Peter and Nellie McLean Residence Honolulu

Hawaii
County and State

Name of Property

Narrative Statement of Significance (Provide at least **one** paragraph for each area of significance.)

The McLean residence is a very good example of a modern style house with Hawaii regional attributes built in the mid-1940s in Hawaii.

Modern architecture has its origins in both changing technology and in the “re-envision-ing” of the social role of architecture in the 20th century. The foundations of the modernist movement were in Europe, although many of the technical innovations came in fact from the experimentation of North American designers and builders. Some historians see technological improvements as the driving force behind the new architecture: the development of iron and then steel, followed by increased application of reinforced concrete. Other scholars see the aesthetic revolt against the excessive decoration of the late Victorian period as the key to understanding “modernism.” A few emphasize the simple practicalities of the new architecture — a style of building that put emphasis on simplicity and functionality over sentimentality and historical or cultural reference.

The modern style gained popularity as a residential form in Hawaii during the late 1930s. The growing awareness of the style may be noted by an exhibition on modern architecture held at the Honolulu Academy of Arts in August 1937, in which Albert Ely Ives was represented with images of the William L. Mitchell residence in Kaneohe. Other buildings on display included the Boettcher residence in Kalama by Vladimir Ossipoff, the Walter F. Dillingham house on Owena Street by Ray Morris, Church of the Crossroads by Claude Stiehl, the Board of Water Supply Pumping Stations by Hart Wood, and the Waikiki Theater by C. W. Dickey. With regards to the 1937 exhibition, the *Honolulu Star Bulletin* observed,

In architecture Honolulu, with the rest of the world, is swinging eagerly into the modern trend. . . . Perhaps the reason why Honolulu (unlike many other places) has not become an “architectural battle ground” during the introduction of modern ideas for housing is due to the thoughtful and clever application by local men of contemporary building techniques which are particularly adapted to Hawaii.

Modern houses must be functional as well as beautiful. Building problems in the islands differ vastly from those in England or in New York. . . . These problems have been met and ably solved by our local specialists and certainly everyone will agree that the results are extraordinarily satisfying. The low sloping roofline of early Hawaiian homes has been used advantageously; simplicity has been the keynote. The easy charm of semi-outdoor living (from house to garden) has been worked out by means of delightful patios and open lanais. [*Star Bulletin*, August 21, 1937, page 42]

Peter and Nellie McLean Residence Honolulu

Hawaii
County and State

Name of Property

The McLean Residence features modern design features praised by Ray Morris and Connie Conrad in February 1938 articles on modern architecture, including Morris's shunning of a flat roof in favor of the more regionally appropriate hip or gable roof with broad overhanging eaves. The house also comports with Connie Conrad's discussion of the new style,

Contemporary architectural and decorative advances are strongly making themselves evident in the work of our architects and designers. Amid the highly localized architectural character already established, due to prevailing semi-tropical weather conditions and the friendly association of interiors to gardens and views, many new impulses have become evident. A great freedom in window arrangement has been indulged in, cornerwise and grouped. Wall spaces and their relationships to windows, doors and furnishings have affected interior and exterior designs materially inasmuch as some walls have become completely a unit of glass, uniting the interior to the garden and to the view beyond, while others remain unbroken, creating a most effective background for modern furniture. [*Star Bulletin*, February 12, 1938, special section, p 7]

With its use of sliding doors, sliding, triple and double hung sash windows to open the living, dining and bed rooms to the outdoors the McLean residence well exemplifies the observations of Conrad. This relationship to the outside is further magnified by the large rear lanai and the balconies at the ends of the upstairs bedrooms. Life flows through the rear lanai with all rooms, including the kitchen and maid's quarters having immediate access to it. Also the lanai needs to be traversed to enter or exit the bedroom wing, as well as the laundry room. As such the house stands as a very good example of immediate post-war residential design rendered in a modern style and not only adapted to, but glorifying, Hawaii's climate.

The house was designed by Honolulu architect Mark Potter (1895-1966). He was born in London, England, raised in New Zealand, and came to Hawaii with his parents in 1914. He was a direct descendant of Christopher Wren and his father, William, worked as a draftsman for Emory and Webb. In 1922 the younger Potter entered into an architectural partnership with William C. Furer, and in 1928 opened his own office. He is best known for his meticulously detailed residential designs, of which Kilohana on Kauai and the Gates residence on Noela are perhaps the finest examples. Similar to these two houses, the McLean residence features a large lanai and flowing, inter-connected indoor-outdoor spaces. With its flowing spaces and well conceived and executed understated detailing, the McLean residence stands as a fine example of Potter's residential work in a Hawaii modern manner. The only other example of Potter's post-war residential design to be listed in the Hawaii Register of Historic Places is his remodeling of the first floor of the Eichelberger residence in Lanikai.

With World War II moving towards a favorable conclusion for the allies, Peter and Nellie McLean purchased this property in November 1944 and in the following month obtained a building permit for its construction. Mr. McLean (1885-1962) migrated from Scotland to Hawaii in 1912, and became employed by Hawaiian Trust Company in 1915. He remained with this

Peter and Nellie McLean Residence Honolulu

Hawaii
County and State

firm throughout his business career and in 1945 was named its president, a position he retained until 1955 when he retired. [*Star Bulletin*, September 19, 1962] The McLeans lived in this comfortable house until Peter's death in 1962. Mrs. McLean continued to live here until 1970 when she sold it to Frederick and Joanne Trotter. Fred Trotter was a descendant of James Campbell, and served as a trustee of the Campbell Estate from 1970-1991. The house remains in the possession of the Trotter family. [*Star-Advertiser*, August 30, 2011]

Peter and Nellie McLean Residence Honolulu
Name of Property

Hawaii
County and State

9. Major Bibliographical References

Bibliography (Cite the books, articles, and other sources used in preparing this form.)

Polk's City Directories for Honolulu, 1948-1953.

City and County Tax Office records.

Documents 75741 and 505074 at the Hawaii State Bureau of Conveyances

Building Permit 45894, dated December 27, 1944 and Building Permit 153466, dated May 1, 1981

"At the Academy of Arts," *Honolulu Star Bulletin*, August 21, 1937, Section 2, page 11

"Grow with Honolulu, Invest in a Home," *Honolulu Star Bulletin*, February 12, 1938, Special Section, page 6 and 8

"Owner's Notice of Completion of Contract," *Honolulu Star-Bulletin*, July 31, 1945, page 13

"Peter McLean Dies at 77: Ex-Hawaiian Trust Head," *Star Bulletin*, September 19, 1962, page 36

"Business Leader Backed Hawaiian Causes," *Star-Advertiser*, August 30, 2011. Page 16

Previous documentation on file (NPS):

preliminary determination of individual listing (36 CFR 67) has been requested

previously listed in the National Register

previously determined eligible by the National Register

designated a National Historic Landmark

recorded by Historic American Buildings Survey # _____

recorded by Historic American Engineering Record # _____

recorded by Historic American Landscape Survey # _____

Primary location of additional data:

State Historic Preservation Office

Other State agency

Federal agency

Local government

University

Other

Name of repository: _____

Peter and Nellie McLean Residence Honolulu
Name of Property

Hawaii
County and State

Historic Resources Survey Number (if assigned): _____

10. Geographical Data

Acreeage of Property less than one acre

Use either the UTM system or latitude/longitude coordinates

Latitude/Longitude Coordinates

Datum if other than WGS84: Bing

Maps <https://www.bing.com/maps/?cp=21.26658%7E-157.813325&lvl=16.0>

(enter coordinates to 6 decimal places)

- | | |
|------------------------|-----------------------|
| 1. Latitude: 21.266576 | Longitude: 157.813335 |
| 2. Latitude: | Longitude: |
| 3. Latitude: | Longitude: |
| 4. Latitude: | Longitude: |

Or

UTM References

Datum (indicated on USGS map):

NAD 1927 or NAD 1983

- | | | |
|----------|-----------|-----------|
| 1. Zone: | Easting: | Northing: |
| 2. Zone: | Easting: | Northing: |
| 3. Zone: | Easting: | Northing: |
| 4. Zone: | Easting : | Northing: |

Peter and Nellie McLean Residence _____ Honolulu
Name of Property

Hawaii _____
County and State

Verbal Boundary Description (Describe the boundaries of the property.)

The property being nominated includes all the property owned by Brooke and Robert Trotter in 2024 as described by Tax Map Key (1) 3-1-027: 037.

Boundary Justification (Explain why the boundaries were selected.)

This parcel of land has been historically associated with this residence.

11. Form Prepared By

name/title: Don Hibbard
organization: self
street & number: 45-287 Kokokahi Place
city or town: Kaneohe state: Hawaii zip code: 96744
e-mail _____
telephone: (808)-542-6230
date: December 31, 2023

Additional Documentation

Submit the following items with the completed form:

- **Maps:** A USGS map or equivalent (7.5 or 15 minute series) indicating the property's location.
- **Sketch map** for historic districts and properties having large acreage or numerous resources. Key all photographs to this map.
- **Additional items:** sketch of floor plan
- **Owner:** Brooke and Robert Trotter
3240 Noela Street
Honolulu, Hawaii 96815

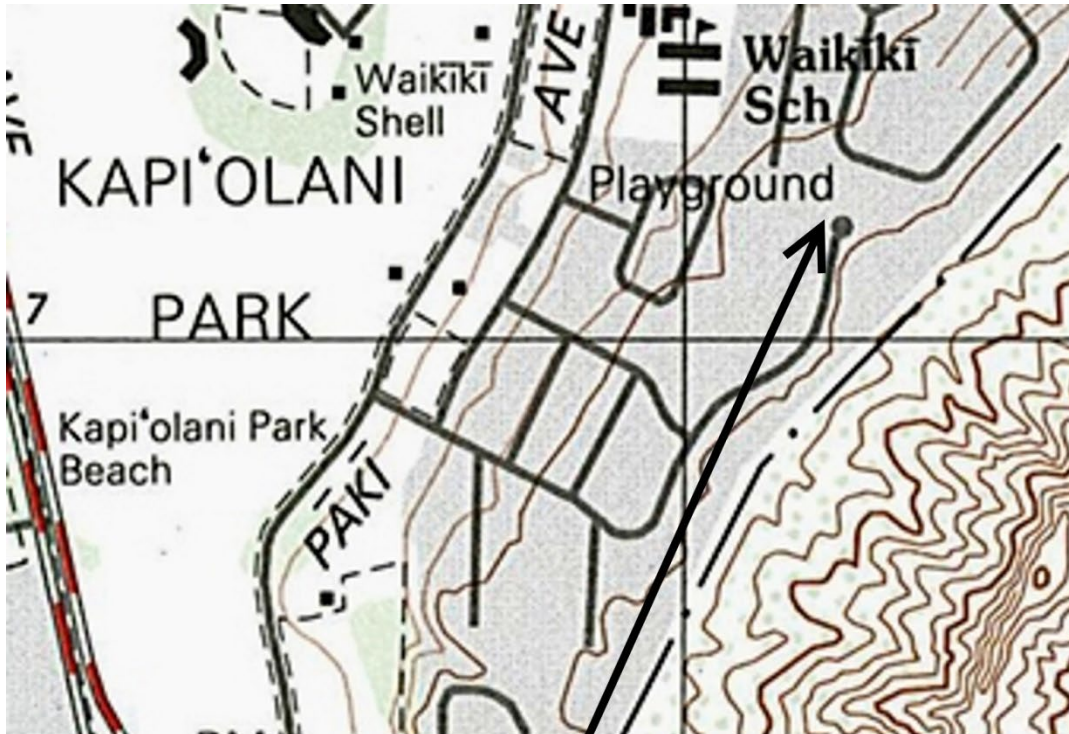
Paperwork Reduction Act Statement: This information is being collected for applications to the National Register of Historic Places to nominate properties for listing or determine eligibility for listing, to list properties, and to amend existing listings. Response to this request is required to obtain a benefit in accordance with the National Historic Preservation Act, as amended (16 U.S.C.460 et seq.).

Estimated Burden Statement: Public reporting burden for this form is estimated to average 100 hours per response including time for reviewing instructions, gathering and maintaining data, and completing and reviewing the form. Direct comments regarding this burden estimate or any aspect of this form to the Office of Planning and Performance Management, U.S. Dept. of the Interior, 1849 C. Street, NW, Washington, DC.

Peter and Nellie McLean Residence _____ Honolulu
Name of Property

Hawaii _____
County and State

USGS



McLean Residence

Peter and Nellie McLean Residence Honolulu
Name of Property

Hawaii
County and State

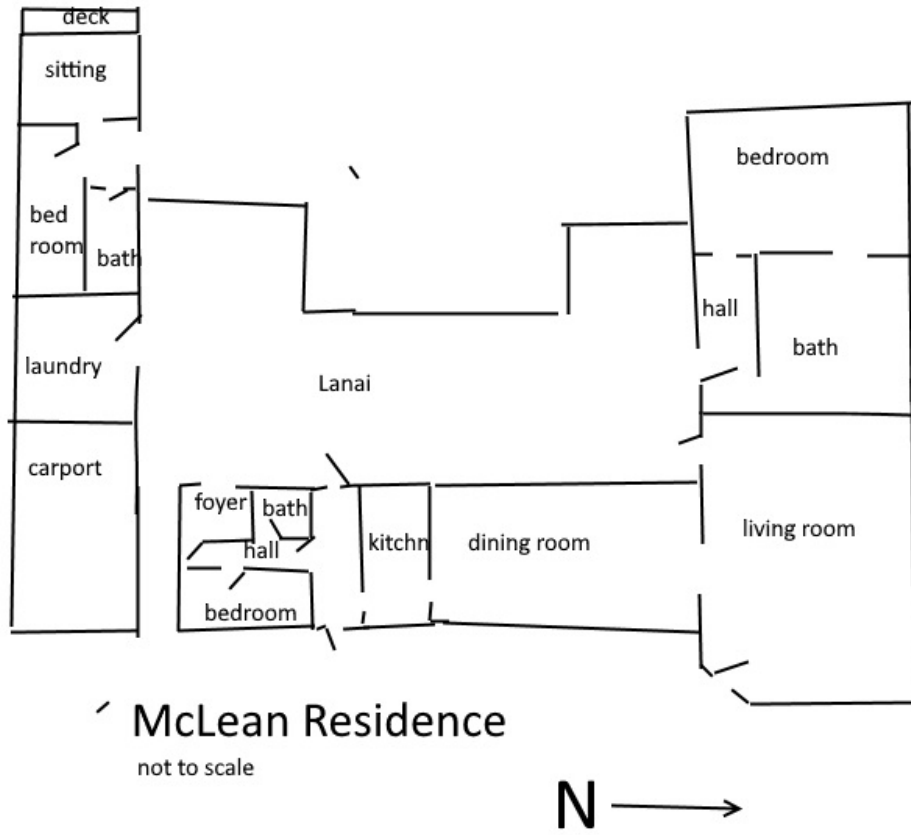
TMK Map



Peter and Nellie McLean Residence _____ Honolulu
Name of Property

Hawaii _____
County and State

Floor Plan:



Peter and Nellie McLean Residence Honolulu
Name of Property

Hawaii
County and State

Photo Log

Name of Property: McLean Residence

City or Vicinity: Honolulu

County: Honolulu State: Hawaii

Photographer: Kikuyo Hibbard

Date Photographed: December 19, 2023

View of the front and entry from the east

1 of 12



Peter and Nellie McLean Residence Honolulu
Name of Property

Hawaii
County and State

Photo Log

Name of Property: McLean Residence

City or Vicinity: Honolulu

County: Honolulu State: Hawaii

Photographer: Kikuyo Hibbard

Date Photographed: December 19, 2023

View of the rear from the southwest

2 of 12



Peter and Nellie McLean Residence Honolulu
Name of Property

Hawaii
County and State

Photo Log

Name of Property: McLean Residence

City or Vicinity: Honolulu

County: Honolulu State: Hawaii

Photographer: Kikuyo Hibbard

Date Photographed: December 19, 2023

View of the entry from the south

3 of 12



Peter and Nellie McLean Residence Honolulu
Name of Property

Hawaii
County and State

Photo Log

Name of Property: McLean Residence

City or Vicinity: Honolulu

County: Honolulu State: Hawaii

Photographer: Kikuyo Hibbard

Date Photographed: December 19, 2023

View of the living room from the east

4 of 12



Peter and Nellie McLean Residence Honolulu
Name of Property

Hawaii
County and State

Photo Log

Name of Property: McLean Residence

City or Vicinity: Honolulu

County: Honolulu State: Hawaii

Photographer: Kikuyo Hibbard

Date Photographed: December 19, 2023

View of the living room from the west

5 of 12



Peter and Nellie McLean Residence Honolulu
Name of Property

Hawaii
County and State

Photo Log

Name of Property: McLean Residence

City or Vicinity: Honolulu

County: Honolulu State: Hawaii

Photographer: Kikuyo Hibbard

Date Photographed: December 19, 2023

View of the dining room from the north

6 of 12



Peter and Nellie McLean Residence Honolulu
Name of Property

Hawaii
County and State

Photo Log

Name of Property: McLean Residence

City or Vicinity: Honolulu

County: Honolulu State: Hawaii

Photographer: Kikuyo Hibbard

Date Photographed: December 19, 2023

View of the lanai from the northeast, south wing addition in background

7 of 12



Peter and Nellie McLean Residence Honolulu
Name of Property

Hawaii
County and State

Photo Log

Name of Property: McLean Residence

City or Vicinity: Honolulu

County: Honolulu State: Hawaii

Photographer: Kikuyo Hibbard

Date Photographed: December 19, 2023

View of the passageway transitioning main body of the house and south wing. Carport wall on right.

8 of 12



Peter and Nellie McLean Residence Honolulu
Name of Property

Hawaii
County and State

Photo Log

Name of Property: McLean Residence

City or Vicinity: Honolulu

County: Honolulu State: Hawaii

Photographer: Kikuyo Hibbard

Date Photographed: December 19, 2023

View of the front bedroom from the southwest

9 of 12



Peter and Nellie McLean Residence Honolulu
Name of Property

Hawaii
County and State

Photo Log

Name of Property: McLean Residence

City or Vicinity: Honolulu

County: Honolulu State: Hawaii

Photographer: Kikuyo Hibbard

Date Photographed: December 19, 2023

View of the front bedroom bathroom from the south

10 of 12



Peter and Nellie McLean Residence Honolulu
Name of Property

Hawaii
County and State

Photo Log

Name of Property: McLean Residence

City or Vicinity: Honolulu

County: Honolulu State: Hawaii

Photographer: Kikuyo Hibbard

Date Photographed: December 19, 2023

View of the rear bedroom from the northeast

11 of 12



Peter and Nellie McLean Residence Honolulu
Name of Property

Hawaii
County and State

Photo Log

Name of Property: McLean Residence

City or Vicinity: Honolulu

County: Honolulu State: Hawaii

Photographer: Kikuyo Hibbard

Date Photographed: December 19, 2023

View of the rear bedroom balcony from the north

12 of 12

