

2016 Annual Report



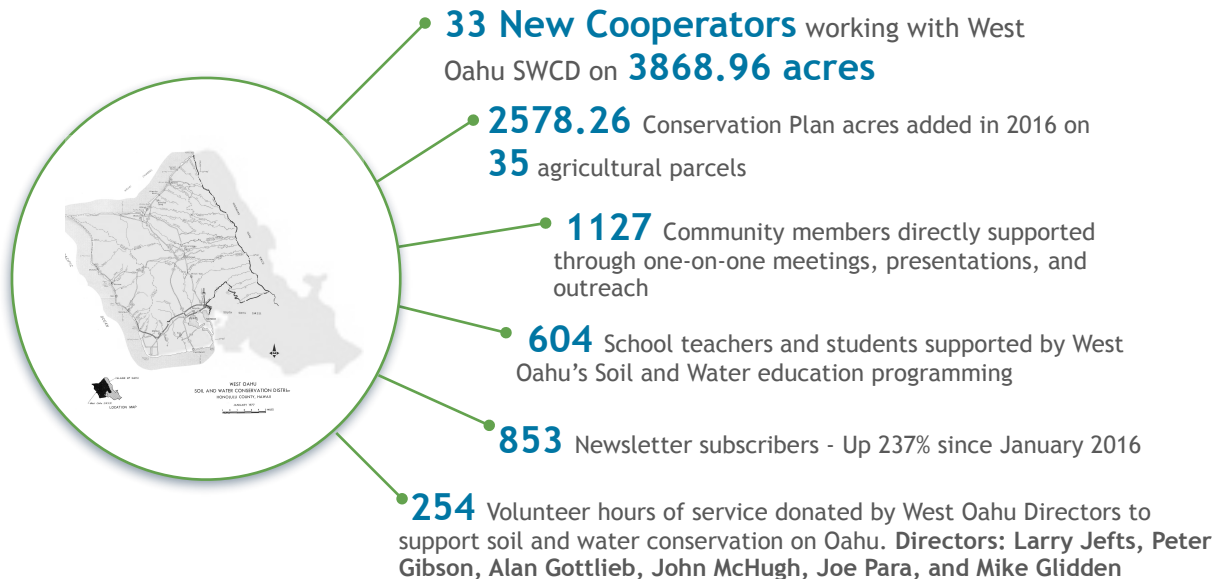
West Oahu

Soil and Water Conservation District

Updated: December 28, 2016

West Oahu 2016 ACCOMPLISHMENTS

Since 1950, West Oahu Soil and Water Conservation District (SWCD) has been working to help farmers understand and implement soil and water conservation best practices that are critical to a vibrant agricultural sector, environment and economy. Agriculture land owners and operators are eligible to apply at no cost as SWCD Cooperators. Cooperators may develop conservation plans and submit them for review and approval at monthly SWCD meetings. Cooperators who implement SWCD approved conservation plans may be excluded from the City and County of Honolulu grading, grubbing, & stockpiling permits [C&C Revised Ordinances of Honolulu (ROH) 14-13.5(d)] and fees. The program is administratively directed by the State of Hawaii.



Together We Farm

让我们一起节约地球资源 - Together We Conserve
ร่วมด้วยช่วยกัน เราเติบโตใหญ่ - Together We Grow
ร่วมกันพัฒนาเราจะขยายตัว - Together We Innovate
Sama sama tayong magsaka - Together We Farm

Together We Farm was launched in December of 2016 to support immigrant and new farmers with the development, implementation, and monitoring of conservation plans. Funds will also support translation. By engaging non-traditional funders on a crowdfunding platform we share information, engage community and help agriculture in Hawaii thrive.

HAWAII'S LOCAL FOOD GOALS DEPEND ON OAHU AGRICULTURE

ACRES IN DIVERSIFIED CROPS ON OAHU;
MORE THAN THE REST OF THE STATE
COMBINED **9,865**
ACRES

ACRES MANAGED FOR AGRICULTURE ON
OAHU. 22,381 ACRES IN CROP PRODUCTION
AND 18,464 IN PASTURE LAND **40,845**
ACRES



West Oahu Soil & Water Conservation District
Website: OahuSWCD.org and
Michelle Gorham, Manager
email: Michelle@OahuSWCD.org
phone: 808.729.1676

Data from the 2015 Hawaii Dept. of Agriculture
Statewide Agriculture Land Use Baseline, 2012 census
and Senator Thielen's Ag report*.

2016 Annual Report



West Oahu

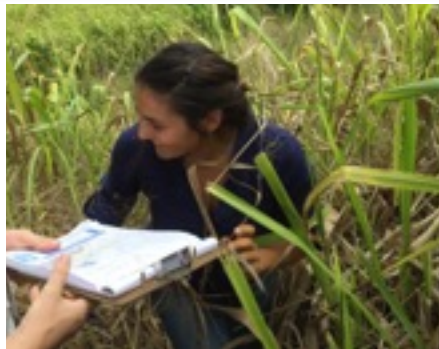
Soil and Water Conservation District

Updated: December 28, 2016

ACCOMPLISHMENTS IN BRIEF



33 New Cooperators working with West Oahu SWCD totaling **3868.96 acres**



2578.61 Conservation plan acres added in 2016 on 35 agricultural parcels



1127 Community members directly supported through one-on-one meetings, presentations, and outreach



604 Teachers & students provided with Agriculture education programming



486% Growth of Facebook Followers since January 2016



853 Monthly Newsletter Subscribers. Up by 237% since January 2016



245 Volunteer Hours valued at more than **\$8324** were donated by Directors. The Glue of West Oahu SWCD, our Directors have a combined 200 years of agriculture experience. By guiding Cooperators, the Directors improve our island through soil and water conservation best practices.

Directors: Larry Jefts, Peter Gibson, Alan Gottlieb, John McHugh, Joe Para and Mike Glidden

Contact West Oahu SWCD: Michelle Gorham - Michelle@OahuSWCD.org - 808.729.1676