


August 2016 West Oahu SWCD news: Women Farmer Survey from ORCD , OHA 'Ahahui grant  CPS Pesticide container Recycling , NRCS Training opportunities and Tropical Storm Darby Disaster Assistance.

[View this email in your browser](#)



Attention Women Farmers! We want to hear from you!

Women farmers across the state are invited to share their experiences on production and marketing activities, as well as various legal and financial risks, via a [survey](#) being conducted until August 20. Responses will be used to identify training needs and opportunities for women farmers in the Hawaiian Islands. Please forward this to the Women Farmers today.

The survey is funded in part by the Western Center for Risk Management Education and is being facilitated by Oahu RC&D.

Results will be used to develop risk management training for women farmers in the Hawaiian Islands. The [survey](#) should take about 15 minutes to complete and will close on August 20, 2016. All

responses will be entered into a random drawing for a \$50 Visa Gift Card.

Questions regarding the survey should be directed to ORCD Executive Director, Jean Brokish
[/jean.brokish@oahurcd.org](mailto:jean.brokish@oahurcd.org) or [808-728-9903](tel:808-728-9903).

Recycling Pesticide Containers is Easy!

The hui at Crop Production Services (CPS) is coordinating the recycling of triple-rinsed used pesticide containers between the hours of 7am and 4pm starting at the end of August (when the recycling bins arrive). Please make sure that your containers have been cleaned and dried according to the [Ag Container Recycling Council](#) directions.

Staff at the CPS sales counter located at 92-1770 Kunia Road in Kunia, HI 96759 can assist customers.

For more information on how to prepare your containers, please visit [ACRC](#)



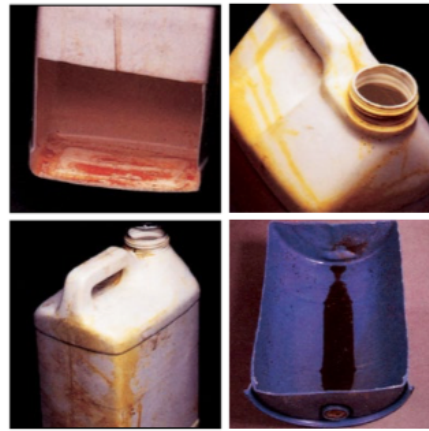
By following the basic guidelines detailed [here](#) and summarized on the image below, you can help to clean and green our island home safely. Thank you for your support of agriculture!

Acceptable



Rinsed, stained and residue-free.
Caps and labels removed.

NOT Acceptable



Containers caked with residue,
dried formulation on container and
thread or liquid residue present.



Commercial Agricultural Producers May File Loss Claims with FSA

Commercial agricultural producers impacted by Tropical Storm Darby may be eligible for disaster assistance through the Farm Service Agency (FSA) if they are signed up for the Non-Insured Crop Disaster Assistance Program (NAP) and file a Notice of Loss (CCC-576) within 72 hours for hand-harvested crops.

The Notice of Loss is used to report failed acreage and may be completed by any producer with an interest in the crop. Filing a Notice of Loss within 72 hours for hand-harvested crops and within 15 days for all other crops including grasses is required following the occurrence of a disaster or when losses become apparent. Producers may file a Notice of Loss with the FSA County Office by email, fax or phone.

For more information or to file a Notice of Loss, call your County FSA Office.

Hawaii County 808-933-8381 ext 1

Honolulu County 808-861-8538 ext 104

Maui County 808-871-5500 ext 2

Kauai County 808-245-9014 ext 2

Questions? [Contact your local FSA office](#)



JOBS

Farm Bill Program Assistant: [Positions across the islands](#) - Apply by August 25

- 1 vacancy - Hilo, HI
- 1 vacancy - Honolulu, HI
- 1 vacancy - Kealahou, HI
- 1 vacancy - Waimea, HI

TRAINING:

August 11 8am Hawaii time:

[Assessing Sustainability for Agricultural and Urban Forests](#)

Society is increasingly realizing the value of individual trees and forested areas found on urban, suburban, and agricultural lands, and research continues to reveal new and sometimes surprising ways in which trees in the places where we live and work provide tangible benefits for people. At the same time, the information base for understanding the nature and extent of these resources is only in the beginning stages of development. This webinar will explore issues related to agricultural and urban forests and their measurement based on findings from the recently-released Forest Service report "Assessing the Sustainability of Agricultural and Urban Forests in the United States"

August 30 8am Hawaii time:

[High Tunnel Systems: Conservation Practice, Successes, and Bumps in the Road](#)



USDA Natural Resources Conservation Service Ecological Sciences and Programs specialists will begin the webinar with a discussion of the High Tunnel System conservation practice standard (CPS 325) to assist producers with extending the growing season for high-value crops in an environmentally safe manner. Included will be discussion of the results of a survey of States that was commissioned by the Associate Chief (Conservation) spring 2016. State specialists will present information on successes they have had with high tunnel systems, as well as some of the problems that have arisen.

More webinars can be found here: <http://www.conservationwebinars.net/documents/planned-conservation-webinars>



OHA 'Ahahui Grants

The purpose of the Office of Hawaiian Affairs Community Grants Program is to support projects, programs and initiatives that address OHA's six Strategic Priorities and accompanying Strategic Results contained in [OHA's 2010-2018 Strategic Plan](#).

'Ahahui Grants program provides funding support for community events. The final orientation for the 2nd round of 2016 Ahahui Grants will be held in the OHA Board Room at Nā Lama Kukui on Friday, August 12, 2016 – 10:00 am to 12:00 noon HST. To register for a session, contact grantsinfo@oha.org or (808) 594-1986. Web-conferencing is available for neighbor island participants. Space is limited and registration is required. For full details of this grant program view the [SOLICITATION](#).

The application for Round 2 will be available through our online application system beginning July 22, 2016 and are due on September 16, 2016 at 4:00pm. Submission of applications will only be accepted through this system.

[Click here to access the ONLINE APPLICATION SYSTEM.](#)

To learn to use the online application system, view:

- [Tutorial #1](#)
- [Tutorial #2](#)

For more questions regarding this grant program, contact (808) 594-1972 or jaceelynnns@oha.org.

July West Oahu SWCD meeting: Tuesday August 23, 12:30. **Location:** Crop Production Services Conference Room, Kunia Village 92-1770 Kunia Road, Kunia HI 96759. Agendas are faxed and posted on the Lt. Governor's website.

West Oahu SWCD Directors

Larry Jefts (Chair), Peter Gibson, Alan Gottlieb, Taylor Kellerman, & John McHugh.

The West Oahu Soil and Water Conservation District is committed to building partnerships that strengthen agriculture in Hawaii and contribute to a vibrant island community, environment, and economy.

Newsletter compiled by Michelle Gorham, West Oahu SWCD, and edited by Cindy Pinick, Hawaii
Agriculture Research Center.
Submit articles and information to Michelle@OahuSWCD.org.



*Copyright © 2016 *West Oahu SWCD*, All rights reserved.*

Want to change how you receive these emails?
You can [update your preferences](#) or [unsubscribe from this list](#)

MailChimp

This email was sent to <<Email Address>>
[why did I get this?](#) [unsubscribe from this list](#) [update subscription preferences](#)
West Oahu Soil & Water Conservation District · P. O. Box 172 · 92-1770 Kunia Rd. · Kunia, HI 96759 · USA

MailChimp