

**HAWAII ASSOCIATION OF CONSERVATION DISTRICTS  
2018 ANNUAL CONFERENCE, JUNE 20 - 22, 2018  
ROYAL KONA RESORT, 75-5852 Ali'i Drive, Kailua Kona, HI 96740**



**WEDNESDAY, JUNE 20, 2018**

- 7:00 - 9:00 Full Buffet Breakfast
- 8:00– 9:00 Conference Registration
- 
- 9:00-9:15 Opening and Welcome Remarks  
Greg Hendrickson, Kona SWCD  
Mayor Harry Kim, Hawaii County
- 9:15-10:15 NRCS: Travis Thomason, NRCS PIA Director, The State We Are In
- 10:15-11:15 Marissa Harman, Director of Asset Management, Hawaii Island, Kamehameha Schools
- 11:15-11:45 Francisco Calderon Phd, Measuring Organic Matter in Soil
- 11:45-12:45 Lunch
- 12:45-1:15 Corie Yanger, Rapid Ohia Death
- 1:15-2:30 Conservation Specialist Presentations  
Hannah Lutgen, Maui CS  
John Nelson, Kauai CS  
Alyssa Fujii, Mauna Kea CS/District Assistant  
Debra Kelly, Molokai-Lanai CS/District Assistant  
Alex Gerken, Hawaii Island CREP Planner
- 2:30 – 2:45 Break
- 2:45-3:15 Richard Stevens/Reko Libby, Dryland Forest
- 3:15-3:45 Irene Sprecher, DOFAW Forest Achievements
- 3:45-4:15 Jeff Knowles, Farmer to Farmer Program
- 6:00 Dinner

Entertainment

Silent Auction to Benefit the Conservation Awareness Program – Land Judging Contest

Note: Items to be paid by cash or check. Credit cards will not be accepted at silent auction.

Individuals Requiring Special Assistance Or Auxiliary Aids Or Services (e.g., sign language interpreter, wheel chair accessibility, or parking designated for the disabled) At The HACD Meeting, Please Contact Staff At Least 72-Hours Prior To The Meeting At 808-214-5388 So That Arrangements Can Be Made.

# 2018 HACD Annual Conference

## Speaker Bibliographies

### ***Travis Thomason, NRCS Pacific Island Area Director:***

Travis is originally from Idaho where he was brought up in a small farming community. His love of agriculture came from working on a friend's farm, there was always something to do. As a graduate of Brigham and Young University, he began working for NRCS as a Soil Conservationist in Utah. He has been a District Conservationist in both Utah and Pennsylvania and held other leadership positions such as acting State Conservationist in Idaho, and acting Environmental Quality Incentives Program (EQIP) Team Lead in Washington D.C.

Throughout his career his focus has been to create a culture of collaboration between the NRCS and its many conservation partners, to efficiently implement programs, and provide excellent customer service to our nation's private landowners. He remains dedicated to working with partners and private landowners to protect and conserve the Pacific Island Area's precious natural resources.

### ***Marissa Harman, Kamehameha Schools, Director of Asset Management for Hawaii Island:***

Marissa, originally from Kauai, received her high school education from Kamehameha Schools Kapālama. From there she went onto U. Of Hawaii Manoa and earned a Bachelor's degree in Liberal Studies with a focus on Hawaiian Preservation and a Master's degree in Urban and Regional Planning.

Marissa's position with Kamehameha Schools is with their Community and Engagement and Resource Group (CE&R). Her responsibilities include leading KS' land and asset management activities and working with other KS divisions to implement a collective vision for KS' agricultural, conservation and commercial lands on Hawai'i island.

### ***Dr. Francisco Calderon, PhD, Soil Science:***

Francisco grew up in Puerto Rico and received his B.S. and M.S. degrees from the University of Puerto Rico. He then went to Michigan State University where he earned his PhD degree in Microbial Ecology and Soil Science. He then went on to the University of California, Davis, where he worked as a Post doc. He joined the Agricultural Research Service (ARS) in 2002, and is now a research Soil Scientist at Akron, Colorado. His research focuses on the effects of environmental impacts and agronomic practices on primary productivity and soil biogeochemistry.

### ***Corie Yanger, Educational/Outreach Specialist, U. of Hawaii College of Tropical Agriculture and Human Resource (CTAHR) Komohana Research & Extension Center***

Born in Hawaii, but brought up in Wisconsin, Corie earned a Bachelor's of Science in Biological Aspects of Conservation in 2006. During her undergraduate studies she accepted an opportunity as a field assistant/intern and learned about long-term vegetation monitoring techniques and paleoecology at Haleakalā National Park, Maui. She also worked as a technician for the Hawai'i Volcanoes National Park Restoration Ecology Program in the Natural Resources Management Division.

At the University of Hawai‘i, Hilo, Corie was a student in the Tropical Conservation Biology and Environmental Science (TCBES) Master’s Program. It was through that Master’s program that she earned a National Science Foundation fellowship and conducted research on the impact of pathogenic fungi on native and invasive seeds. Her research took her to nine lowland wet forest sites in East Hawai‘i, representing a range of native canopy dominance from no native representation to a medium-high native presence.

***Dr. Richard Stevens, history professor, researcher and forest restorer:***

Originally from the mid-west, Dr. Stevens has called Hawaii home for many years. Dr. Stevens is a History and Humanities Lecturer at UH-Palamananui and is working directly with the State on developing a reforestation plan for the school’s land. He has also been instrumental in the reforestation project at the West Hawaii Veterans' Cemetery and in other forest and trails restoration projects.

***Reko Libby, recent graduate student in the field of botany:***

Just completed her Master’s degree work in Botany. Reko’s thesis is a collaborative project with the Ka'upulehu hui and focuses on the natural regeneration of threatened and endangered dryland forest species at Ka'upulehu forest and highlights quantitatively their management success over the past 15+ years. Reko is from Hawaii Island and was enrolled in U. of Hawaii at Manoa for her Bachelor’s degree in Biology and is where she is obtaining her Master’s degree from as well.

***Irene Sprecher, Forestry Program Manager, Hawaii Division of Forestry and Wildlife:***

Irene has been instrumental in the development of the NRCS/USFS/DOFAW/HACD Memorandum of Understanding that once someone has an approved Forest Stewardship Program management plan it is easier to access programs offered by these organizations. For these efforts Irene was awarded the USDA’s prestigious Two Chiefs award. Through her position in DOFAW Irene continues to be a great advocate for forestry endeavors. She received her Bachelor's of Arts at the University of Hawaii focusing on Forest Ecology and Human Stewardship of Natural Resources. Irene earned her Master’s of Natural Resources from Oregon State University for her work on Hawaiian sandalwood.

***Jeff Knowles, NRCS District Conservationist, Retired***

Jeff moved to Hawaii with his family back in 2002 where he worked as DC for NRCS at the Kealakekua field office. Since his retirement in 2009, Jeff has been involved in Farmer to Farmer program that has brought him to many countries around the world and to name just a few, he has been to the Dominican Republic, Uganda and Nicaragua.

**HAWAI'I ASSOCIATION OF CONSERVATION DISTRICTS  
2018 ANNUAL CONFERENCE, JUNE 20 - 22, 2018  
ROYAL KONA RESORT, 75-5852 Ali'i Drive, Kailua Kona, HI 96740**



**Thursday, JUNE 21, 2018**  
**Agenda – Subject to Change**

7:00-9:00 Full Breakfast Buffet

9:00 - Pick up at hotel.

9:15-10:00 - Like Like Burial Site for the Battle of 1819, Keahou

10:30-11:30 - South Kona Fruit Stand

12:00 - Arrive at Greenwell Farms and have lunch, provided by Teshima's Restaurant with dessert pastries from Cafe Florian.

1:00-2:00 - Tour of Greenwell Farms

3:00 - Tour the Vanillaria

4:00 - Tour bus returns to the hotel

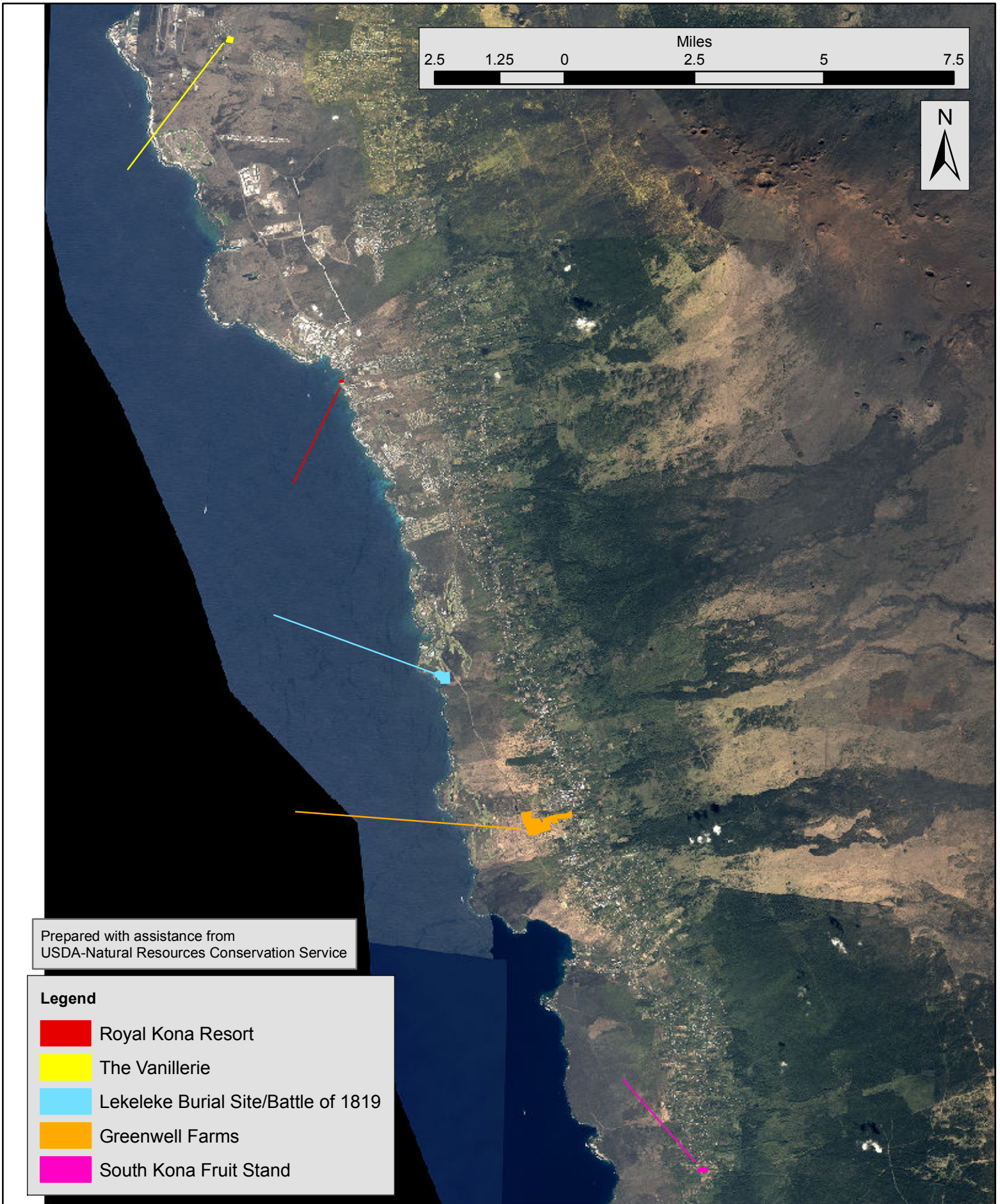
4:00-6:00 Royal Kona Resort's Happy Hour featuring Henry Kopono  
From the Royal Kona Resort web site: Henry Kapono is an award-winning, Grammy nominated singer/songwriter. His contemporary rock sound touches the soul with the simple honesty of his lyrics and music, and his gift of an evocative, plaintive balladeer's voice haunts you long after he leaves the stage. Join us the third Thursday of the month for a spellbinding performance.

5-6:30 No Host Bar

6:30 - Dinner, Royal Kona Resort

Individuals Requiring Special Assistance Or Auxiliary Aids Or Services (e.g., sign language interpreter, wheel chair accessibility, or parking designated for the disabled) At The HACD Meeting, Please Contact Staff At Least 72-Hours Prior To The Meeting At 808-214-5388 So That Arrangements Can Be Made.

# 2018 HACD Conference Agricultural Tour Map



Prepared with assistance from  
USDA-Natural Resources Conservation Service

## Legend

- Royal Kona Resort
- The Vanillerie
- Lekeleke Burial Site/Battle of 1819
- Greenwell Farms
- South Kona Fruit Stand

## *2018 HACD Annual Conference Tour*

### ***1st Stop: Lekeleke Burial Grounds, Battle of 1819***



In the 1819 Battle of Kuamo'o, Hawaiian forces clashed over the traditional kapu religious system. The dispute pitted the forces of Kekuaokalani, nephew of Kamehameha I, who sought to pre-serve the traditional system, against his cousin, Liholiho (Kamehameha II), who had abandoned the kapu system. Liholi-ho was victorious, but many warriors from both sides perished in battle and were buried on the property, including Kekuaokalani and his wife, Chiefess Manono.

With her dying breath, Chiefess Manono is said to have uttered “Mālama kō aloha”- “keep your love”- a plea to both sides that no matter what obstacles come to Hawai'i, keep your love of one another.

The nonprofit Aloha Kuamoo Aina and the Trust for Public Land Hawaii purchased the 47 acre parcel of land in late 2015. State Legacy Funds covered the bulk of the 4.5 million dollar sale with a 3 million dollar grant. The Office of Hawaiian Affairs contributed \$500,000 and the rest was raised through nu-merous smaller contributions.

### ***2nd Stop: South Kona Fruit Stand***



Ken Verosko and his partner Beth acquired the Kamehameha Schools lease on this land in 2003. Ken was a decorative paint contractor in New York City. A painting contract brought him to Oahu and on the weekends he would visit the Big Island to unwind and fell in love with the place.

This farm was originally developed after WWII as a tobacco and coffee farm. Since then every farmer who has farmed that land brought in other orchard crops. Today, the list of crops is long and includes soursop, starfruit, dragon fruit, lychee, papayas, bananas, mangoes (19 varieties) loquat, jackfruit white sapote, avocados (21 varieties) , lemons, tangelos, tangerines, grape-fruit, and limes. They grow coffee and macadamia nuts next door, a parcel they also manage.

For a while they held the Guinness World Record for soursop, in 2010 they had a soursop that weighed in at 8.14 pounds and was as big as a human head!

The greatest challenges these folks face are from Mother Nature: too much water, not enough water, weeds, insects, vog, etc.

Over the years Ken and Beth have come to truly appreciate all the folks that wander into their little fruit stand and share their stories with them. They have met people from all over the world and they under-stand, people are all the same and all so different too.

### ***3rd Stop: Greenwell Farms:***



The Greenwell Farms legacy began in 1850 when Henry Nicholas Greenwell left England and first set foot on the fertile soil of rural Kona.

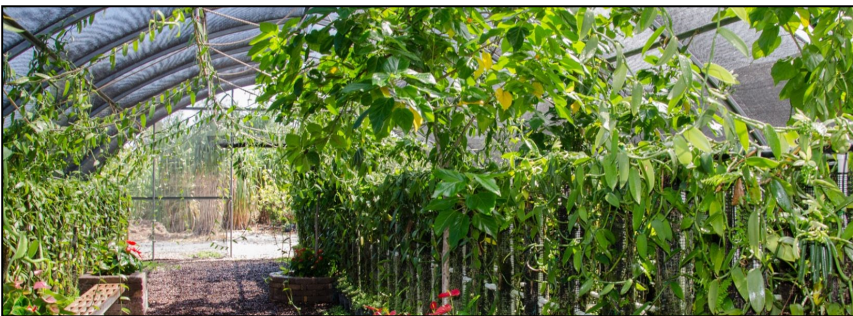
Together with his wife, Elizabeth Caroline, Henry spent the next forty years farming, ranching and perfecting his Kona Coffee, soon exporting it to Europe and the Americas. In 1873, the President of the Kaiser's Exposition awarded the Greenwells a "Recognition Diploma" for their Kona Coffee at the World's Fair in Vienna, Austria.

Today, Greenwell Farms is situated in the heart of the Kona Coffee growing region (see map) adjacent to the ancestral home of Henry and Elizabeth, which is now occupied by the Kona Historical Society and Museum.

Managed by the descendants of Henry and Elizabeth, Greenwell Farms has evolved into a multi faceted Agribusiness: The farming operation is located on the same farmland once cultivated by the Greenwell Family in the 1800's. Today Greenwell Farms employs modern farming practices to ensure consistent supply and the highest quality possible.

In addition to farming, the company purchases coffee cherry (just harvested) from over 300 farmers in the North and South Kona Regions. They operate their own pulping and drying facilities, dry mill and green bean grading and storage facility.

### ***4th Stop: The Vanillerie***



Guy Cellier and JR Pataray cultivate the Vanillerie, a small vanilla farm on the west side of Hawaii's Big Island

#### **Guy Cellier**

Born and raised in South Africa, Guy had the pleasure to call many places home before settling eventually on

the Big Island. Passionate about all manner of flora, his thirty years of forestry and agricultural experience helped him grow and manage the Big Island's sustainable Eucalyptus forests of over 18 million trees. Guy now delights local, domestic, and international visitors to his vanilla farm with the beauty and histo-ry of this storied spice

#### **JR Pataray**

A native of the Philippines and endowed with the greenest thumb on the island, JR's unrivaled ability to coax life from West Hawaii's erstwhile lava fields offers visitors to their farm a singular and unexpected botanical experience. Since raising the Vanillerie, and the working nursery that surrounds it, from the ground, JR now manages the day-to-day logistics of keeping our myriad plants happy and healthy. Be sure to ask him about his goats!

**HACD Executive Board Meeting**  
**Friday, June 22, 2018**  
**9:30 a.m. – 12:00 p.m.**  
**Hawaii Ocean Science & Technology Park, Hawaii Island**  
**NELHA Gateway Visitor Center**

Agenda

- I. Call to Order – Brenda Iokepa-Moses
- II. Roll Call – Peter Tausend
- III. Secretary’s Minutes – Peter Tausend
- IV. Treasurer’s Report – Rick Robinson
- V. Island Vice President’s Written Reports
- VI. Agency Reports
  - A. NRCS – Updates- Travis Thomason and Staff
  - B. RC&D’s – Updates- Oahu, Garden Island, Tri-Isle and Hawaii Island
- VII. Committee Reports
  - A. Legislative Committee: Updates / Future Support - Mae Nakahata/Karen Ah Mai/Brenda Iokepa-Moses/Rick Towill/Dan Clegg/Wes Nohara/Dudley Kubo
- VIII. Unfinished Business
  - A. NACD Auxiliary Poster Contest
  - B. 3<sup>rd</sup> Party Conservation Plans:
    - i. SWCD Approval When Sound, Created by NRCS Certified Planner & Received Signature of DC Review
- IX. New Business
  - A. Proposed Amendment to HACD Bylaws: Follow Ch. 180- Directors are the governing body
- X. Other Business
  - A. New Sunshine Law Requirements Effective July, 1, 2018
  - B. HACD & SWCD Positions
    - i. East Hawaii CS & County Funded Planners Hired
    - ii. HACD Maui Program Assistant & Oahu CS Positions Readvertising
  - C. 2017 State Conservation Awareness Contest Winner Update/ 2018 Hosting District
  - D. 2019 HACD Annual Conference – Hosting District
  - E. Next meeting: TBA
- XI. Meeting Adjournment

Board may go into Executive Session pursuant to Section 92-5(a), Hawai‘i Revised Statutes.

Individuals Requiring Special Assistance Or Auxiliary Aids Or Services (e.g., sign language interpreter, wheel chair accessibility, or parking designated for the disabled) At The HACD Meeting, Please Contact Staff At Least 72-Hours Prior To The Meeting At 808-214-5388 So That Arrangements Can Be Made.



