

WEST MAUI SOIL & WATER CONSERVATION DISTRICT MEETING
WEDNESDAY, JULY 18, 2018

The meeting was called to order 1:30 p.m., at the USDA Natural Resources Conservation Service Kahului field office.

Present

Directors: Jay Nobriga, Pomaika'i Kaniaupio-Crozier, Ian Swezey, and Kimo Falconer
Tova Callender, Watershed Coordinator
Maui SWCDs: Jason Hew, Hannah Lutgen, and Maggie Kramp

I. Minutes of June 6, 2018

Kimo Falconer moved to accept the minutes of June 2, 2018, seconded by Pomaika'i Kaniaupio-Crozier, motion carried.

II. Treasurer's Report

The treasurer's report was email to WMSWCD directors.

Total Expenses: \$30,503.29
Income (reimbursement): \$444.37
Current Balance of Treasury: \$67,163.43

Pomaika'i Kaniaupio-Crozier moved to accept the treasurer's report, seconded by Ian Swezey, motion carried.

III. Correspondence - none

IV. West Maui Ridge to Reef Program – Kahana Nui Basin

Tova Callender gave a brief presentation of the Kahana Nui Basin De-watering and Cleanout Project and discussed the Request for Proposal with the WMSWCD board.

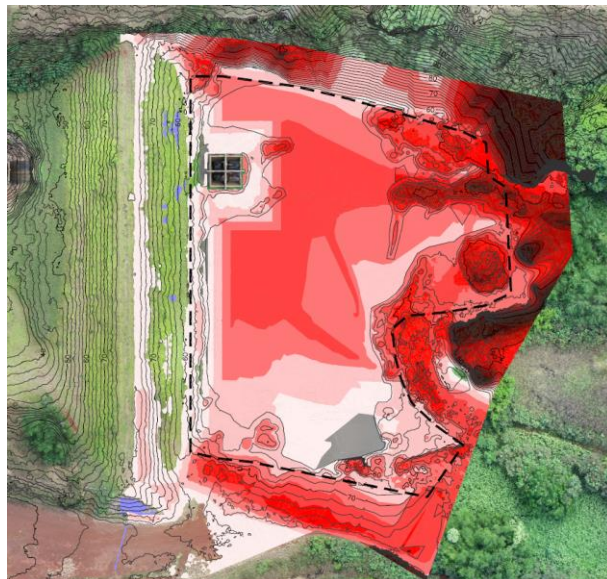
**EARTHWORK QUANTITIES INSIDE
BOTTOM OF BASIN (OUTLINED ON
MAP) FROM EXISTING TO REACH
ORIGINAL DESIGN:**

EXCAVATION = 31,400 CU. YDS.
EMBANKMENT = 0 CU. YDS.

LEGEND/ABBREVIATIONS:

— 70 — AERIAL SURVEY MAJOR CONTOURS
— — — AERIAL SURVEY MINOR CONTOURS
- - - - - LIMITS OF COMPARISON

ELEVATION RANGE			
	MIN. ELEVATION	MAX. ELEVATION	COLOR
1	-3.00	-1.00	Blue
2	-1.00	1.00	Light Blue
3	1.00	3.00	Light Green
4	3.00	6.00	Light Red
5	6.00	9.00	Red
6	9.00	12.00	Dark Red
7	12.00	15.00	Dark Red
8	15.00	18.00	Dark Red
9	18.00	21.00	Dark Red
10	21.00	24.00	Dark Red
11	24.00	>24.00	Dark Red





One of the possible sites for storing sediment is on ML&P land. Upon discussion on the location, ML&P would like the sediment to be placed higher up, in an area by the landing zone, instead of where it was originally planned. If the sediment is stockpiled at the originally planned site, potential runoff will enter ML&P's basin and become their problem. Runoff from the new proposed location would enter back into Kahana Basin vs ML&P's basin.

RFP:

- Notice of RFP
- Include site visit with contractors
- Suggest including the ability for the contractor to sell the sediment.
- Contract a one-year term
- How to submit a bid
- Liability Insurance
- Scope of work
- Remove 30K yards of sediment
- Include BMPs, such as dust control and soil stabilization

Comments/Concerns/Suggestions:

- Project fund is \$199,000 – 10% admin fees, which is may not be enough complete the job
- Amount of sediment removal will be approximately 2617 semi-truck loads.
- Contractor cost includes a truck driver, heavy equipment operator, etc.
- Permit for stockpiling
- Suggest sprinkling water in nearby field.
- The valve is ineffective
- Possibly build berms for counter flow
- Ideal situation would be ML&P to bid on the job
- We are not solving the County's problem, we're helping them to solve the problem

- The deliverable of the grant is to restore the basin to its original capacity, which includes a report of amount of sediment removed
- Timeframe of project agreement with NFWF
- Have different segments of the RFP

Letters were drafted by Tova to the following people:

- Project notification Letter to Don R. Gerbig, President, Kahana Ridge Association, Inc.
- Letter to David Goode, Dept. of Public Works requesting permission for sediment removal from basin
- Tim Esaki, ML&P - request for cooperation and use of storage area for sediment

Action Items:

- Revise RFP and letters
- Pomaika'i Kaniaupio-Crozier moved to form an ad hoc committee as recommended by Wes Nohara, seconded by Kimo Falconer, motion carried.
- Schedule ad hoc committee meeting
- Schedule site visit with contractors

V. Conservation Planning

A general timeline on conservation planning was presented by Jason Hew, as requested by Pomaika'i Kaniaupio-Crozier. The conservation planning timeline depends on the type of the plan. There are 5 major items that could have a hold on completing a plan:

- Required paper work from the cooperator
- Engineering Design
- Cultural Resources
- Complexity of the plan
- May need outside consultations.

VI. Adjournment

The meeting adjourned at 3:17 p.m. An executive session was requested by Pomaika'i Kaniaupio-Crozier upon adjournment of the regular West Maui SWCD meeting.

Submitted by
/s/ Ian Swezey
Secretary

Meeting recorder: Maggie Kramp