

National Park Service
U.S. Department of the Interior
Haleakalā National Park



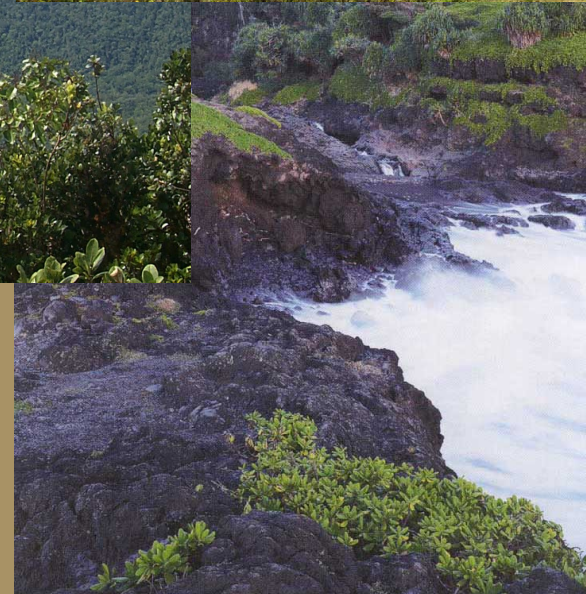
‘Ua‘u Management at Haleakalā National Park

Resources Management Division
Wildlife Management Program



EXPERIENCE YOUR AMERICA

Haleakalā National Park



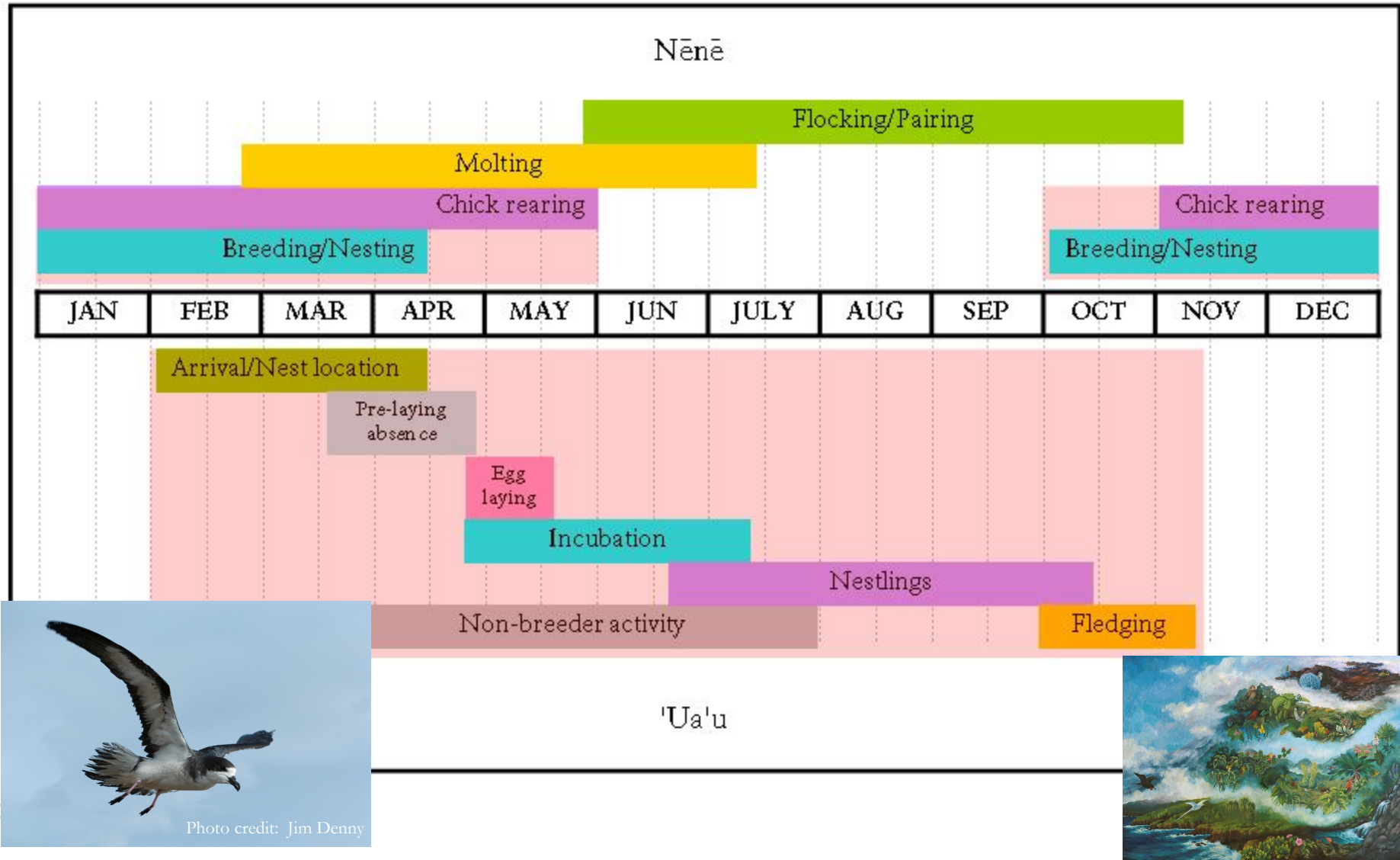
- Encompasses over 30,000 acres
- Spans from summit to sea
- Contains a variety of habitats

EXPERIENCE YOUR AMERICA

Haleakalā National Park

- Home to large protected breeding population
- 'Ua'u present from February - November
- Approximately 3000 known burrows
- Estimated population 8,000-10,000
- Burrows can be 3-20 feet deep

Nēnē & 'Ua'u Breeding Chronology Haleakalā National Park

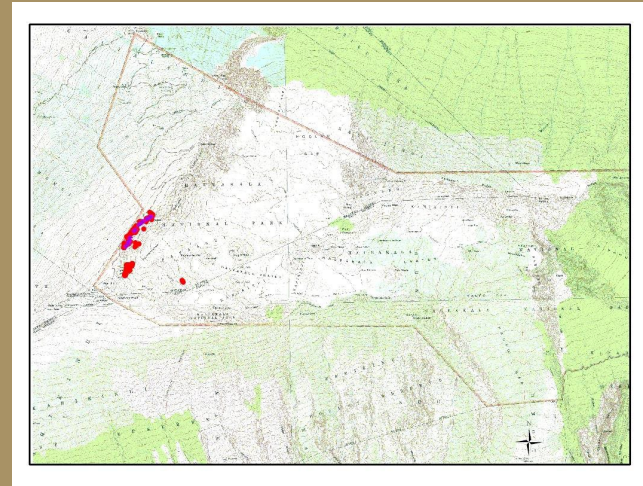
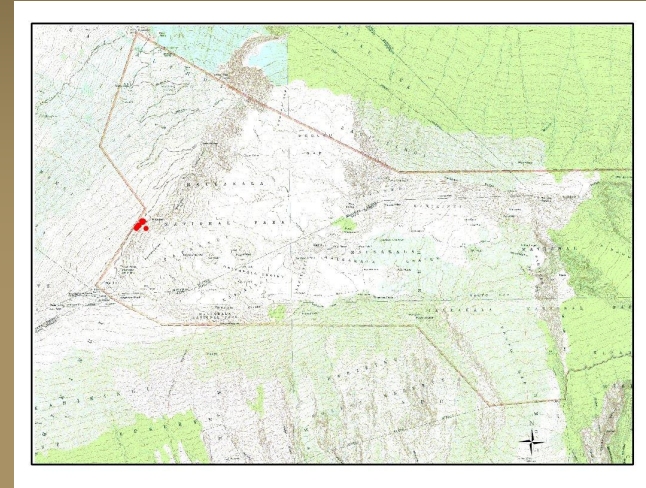


‘Ua‘u Management for 30+ Years

- Landscape level habitat protection
 - Feral ungulate fences and control
 - Non-native plant control/native plant restoration
- Predator control
- Nest monitoring/surveys
- Grounding/injury response
- Banding
- Public outreach

Management Success!

- **1960s** – 15 nests, low population, predation, goats collapse burrows
- **1970s** – summer surveys, more nests found, rodent control begins



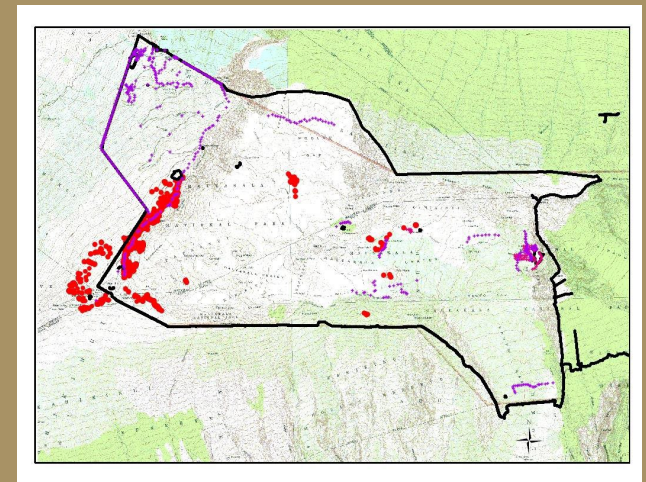
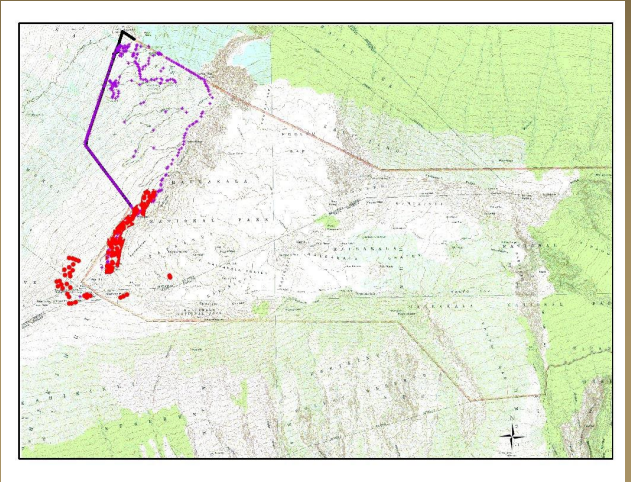
Feral Animal Control



EXPERIENCE YOUR AMERICA

Management Success!

- **1980s** – Intensive research, more nests found, fence construction starts, predator control expands
- **1990s** – Fence done in 1986, animals removed to near zero by 1991, predator control expands, regular/systematic nest searches continue--more nests found, burrows west of fence not active (large numbers of goats)



Predator Control

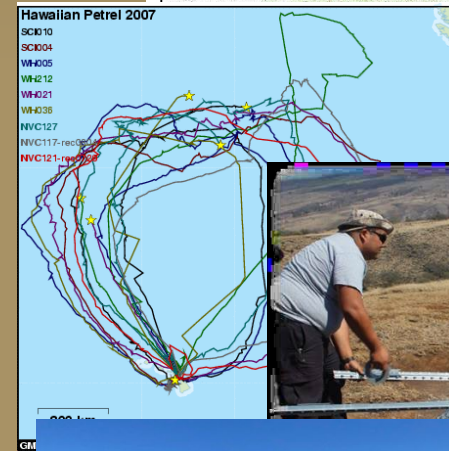
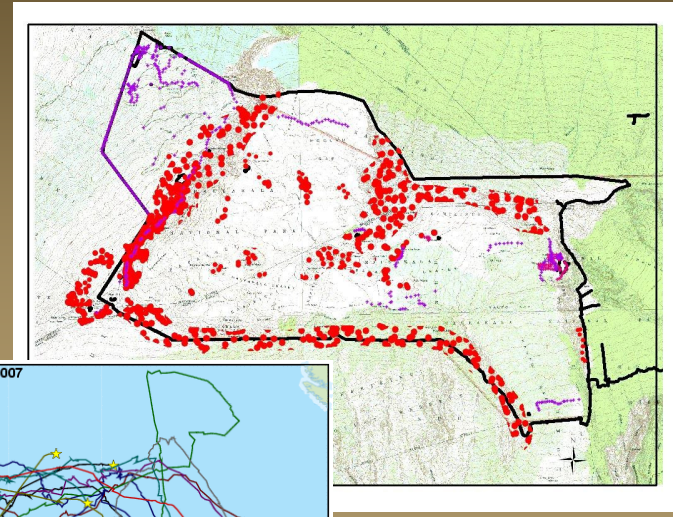
- Began in 1971 in 'ua'u colony
- Expanded in 1980s and 1990s
- Improved in 2000s



EXPERIENCE YOUR AMERICA

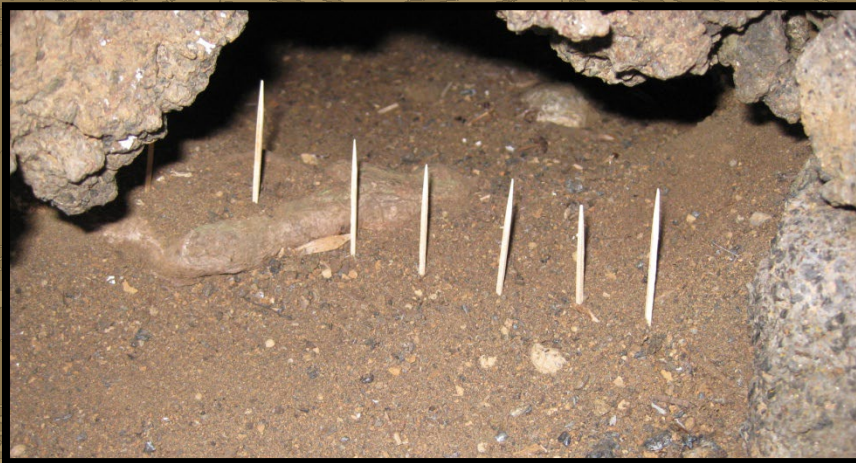
Management Success!

- 2000s –
 - colony expansion
 - continued monitoring
 - continued ungulate and predator control
- Last 15 years
 - more research
 - increased management area
 - improved ungulate and predator control
 - more organizations monitoring, protecting, and conducting research



EXPERIENCE YOUR AMERICA

Burrow Monitoring



EXPERIENCE YOUR AMERICA

Surveys

- Inventory new locations
 - Frontcountry
 - Backcountry – crater, outlying areas
- Implement new monitoring protocol

Banding

- Night Banding
 - October 6-8, 2020
 - 1 adult, 9 fledglings banded
 - No recaptures



EXPERIENCE YOUR AMERICA

‘Ua‘u Burrow Activity 2020

- **Total number of known burrows: 2708**
- **Nest monitoring**
 - 66 new burrows found (7800’-8800’ elev)
 - 492 burrows checked at least once, Feb-Nov (88.2% visited by ‘ua‘u)
 - 102 “project burrows” selected and monitored at least 4 times during nesting season

Status	Count	Percent
Surveyed	102	--
Active	95	93.1
Fledged	35	36.8
Depredated	2	2.0

2021 'Ua'u Management

- Predator control
- Nest monitoring
 - Road burrow monitoring
- Collaborations
 - USGS population mapping
 - USGS program review
 - Radar surveys
 - Surveys on neighboring lands

Outreach Efforts



ALERT!

HAVE YOU SEEN THESE BIRDS

ENDANGERED
Hawaiian Dark-rumped Petrel ('UA'U)
Nests at high elevations.

NOT ENDANGERED
Wedge-tailed Shearwater ('UA'U KANI)
Nests at low elevations.

<p>Black cap does not extend to beak. Nose tube prominent, sticks up.</p>	Head Color	<p>Gray cap extends to beak. Nose tube flat on beak.</p>	Foot Color
<p>Black toes, light colored toward body, and webbed.</p>		<p>Entire foot is pink, and webbed.</p>	

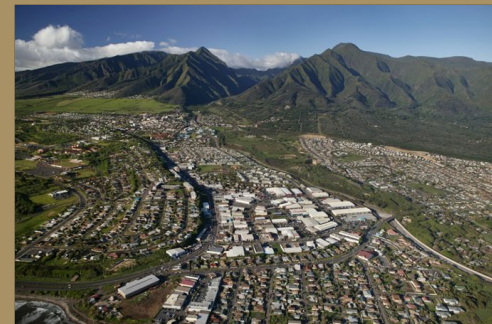
Young birds leave their nests in October and November. They often become confused by bright urban lights, fly in circles, get tired, and fall to the ground.

If you find one of these birds, place it in a box. Be careful these birds may bite! Do not give it any food or water. Do not release the bird yourself.

IMMEDIATELY CALL:
Haleakala National Park 264-5317, any time
or State Division of Forestry and Wildlife 984-8100, Mon.-Fri.

This flyer paid for by donations from visitors to Haleakala National Park.

Ongoing/New Challenges



- Predation
- Increased visitation and sunset traffic
 - Resource damage, roadkills
- Development/light pollution
- Climate change/threats to ocean habitat

Mahalo! Any Questions?



EXPERIENCE YOUR AMERICA