

DAVID Y. IGE
GOVERNOR



STATE OF HAWAII
DEPARTMENT OF TRANSPORTATION
869 PUNCHBOWL STREET
HONOLULU, HAWAII 96813-5097

FORD N. FUCHIGAMI
DIRECTOR

Deputy Directors
JADE T. BUTAY
ROSS M. HIGASHI
EDWIN H. SNIFFEN
DARRELL T. YOUNG

IN REPLY REFER TO:

Board of Land and
Natural Resources
State of Hawai'i
Honolulu, Hawai'i

ISSUANCE OF A REVOCABLE PERMIT
FOR SPACE FOR MAINTENANCE AND STORAGE OF
AIRLINE GROUND SUPPORT EQUIPMENT (GSE)
DELTA AIR LINES, INC.
HONOLULU INTERNATIONAL AIRPORT
TAX MAP KEY: (1) 1-1-003: 015 (PORTION)

O'AHU

APPLICANT:

Delta Air Lines, Inc. (Delta), whose business address is 300 Rodgers Boulevard #68,
Honolulu, Hawai'i 96819.

LEGAL REFERENCE:

Section 171-55, Hawai'i Revised Statutes

LOCATION:

A portion of Honolulu International Airport, Island of O'ahu, State of Hawai'i, identified
by Tax Map Key: 1st Division, 1-1-003: 015 (Portion)

AREA:

Building/Space No. 132-104, containing an area of approximately 4,820 square feet; and
Area/Space No. 001-122D, containing an area of approximately 5,849 square feet, as
shown and delineated on the attached map labeled Exhibit "A".

ZONING:

State Land Use District: Urban
City and County of Honolulu LUO: Industrial (I-2)

ITEM M-4

BLNR – ISSUANCE OF A REVOCABLE PERMIT
FOR SPACE FOR MAINTENANCE AND STORAGE OF
AIRLINE GROUND SUPPORT EQUIPMENT (GSE)
DELTA AIR LINES, INC.

Page 2

LAND TITLE STATUS:

Non-ceded - Section 5(a) lands of the Hawai'i Admission Act
DHHL 30% entitlement lands pursuant to Hawai'i Admission Act YES ___ NO X

CURRENT USE STATUS:

Land presently encumbered by Governor's Executive Order No. 3201, dated June 8, 1983, setting aside 3,152.177 acres designated as Honolulu International Airport under the control and management of the State of Hawai'i, Department of Transportation, Airports Division for Airport Purposes.

CHARACTER OF USE:

Delta will use the space for maintenance and storage of their airline ground support equipment as part of airline operations at Honolulu International Airport.

COMMENCEMENT DATE:

To be determined by the Director of Transportation at a later date.

MONTHLY RENTAL:

\$2,646.98 (Building/Space No. 132-104 rent is based upon the Fair Market Rental for property at 350 Aolewa Place, dated February 2013) and \$2,646.67 (Area/Space No. 001-122D rent was determined from the DOTA schedule of rates and charges established by appraisal of Airports property statewide)

SECURITY DEPOSIT:

Three (3) times the monthly rental in effect

DCCA VERIFICATION:

Place of business registration confirmed:	YES <u>X</u>	NO ___
Registered business name confirmed:	YES <u>X</u>	NO ___
Good standing confirmed:	YES <u>X</u>	NO ___

BLNR – ISSUANCE OF A REVOCABLE PERMIT
FOR SPACE FOR MAINTENANCE AND STORAGE OF
AIRLINE GROUND SUPPORT EQUIPMENT (GSE)
DELTA AIR LINES, INC.

Page 3

CHAPTER 343, HRS - ENVIRONMENTAL ASSESSMENT:

Pursuant to Section 11-200-8(a), Environmental Impact Statement Rules of the Department of Health, State of Hawai'i, this disposition is exempt from requirements regarding preparation of an environmental assessment, negative declaration, or environmental impact statement as required by Chapter 343, Hawai'i Revised Statutes, as amended, relating to Environmental Impact Statements, because the proposed action falls within Exemption Class #1, Comprehensive Exemption List for the State of Hawai'i, Department of Transportation, dated November 15, 2000, as approved by the Environmental Quality Council. Exemption Class #1 covers operations, repairs, or maintenance of existing structures, facilities, equipment, or topographical features involving negligible or no expansion or change of use beyond that previously existing.

REMARKS:

In accordance with Section 171-55, HRS, relating to Permits, the Department of Transportation proposes to issue a month-to-month revocable permit to Delta to use Building/Space No. 132-104 and Area/Space No. 001-122D for maintenance and storage of their airline ground support equipment as part of their airline operations at Honolulu International Airport. The Department of Transportation has no objection to Delta's request.

RECOMMENDATION:


That the Board authorize the Department of Transportation to issue a month-to-month revocable permit to Delta, subject to: (1) terms and conditions herein outlined, which are by reference incorporated herein; and (2) such additional terms and conditions as may be prescribed by the Director of Transportation to best serve the interests of the State.

Respectfully submitted,

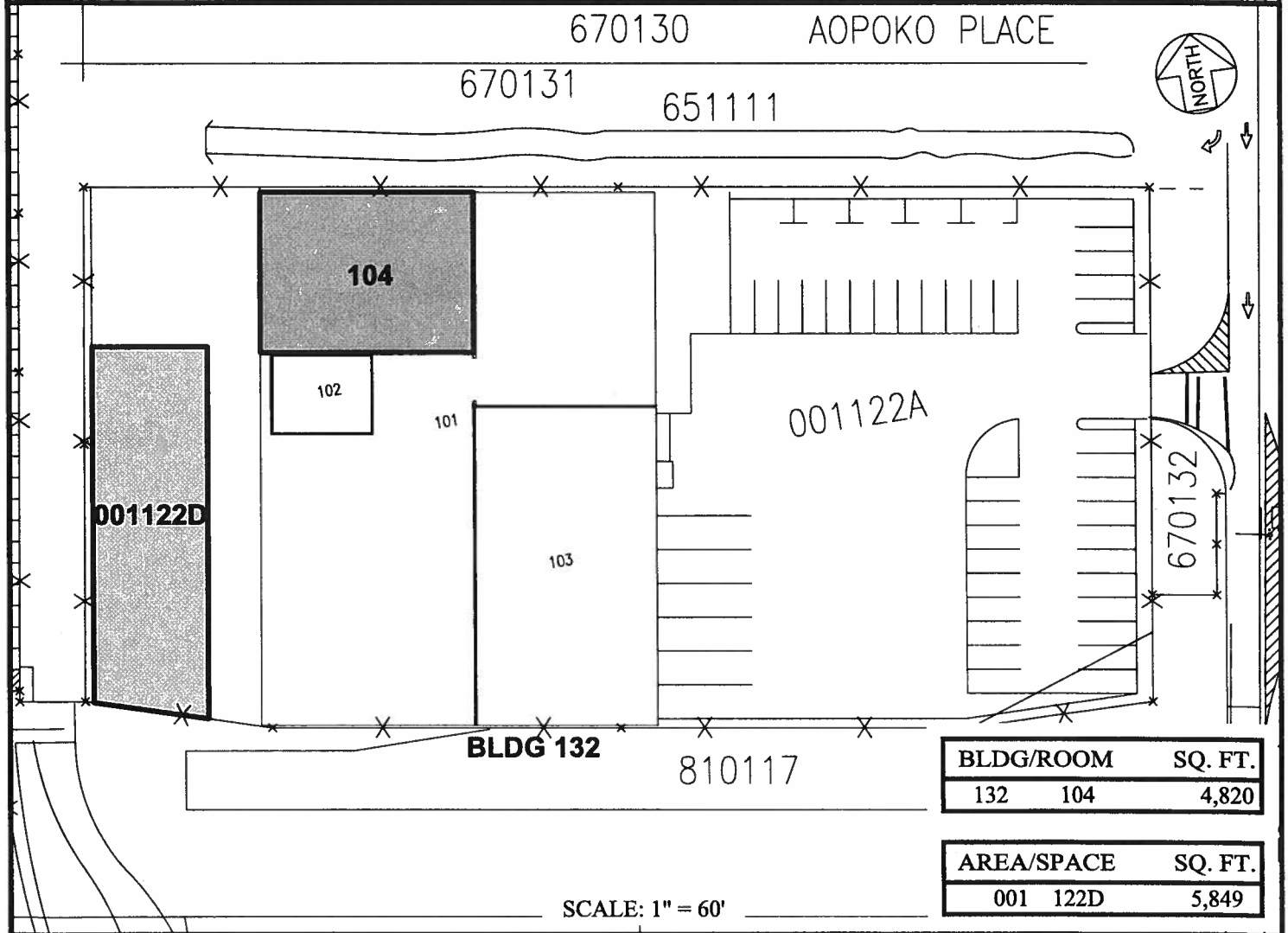
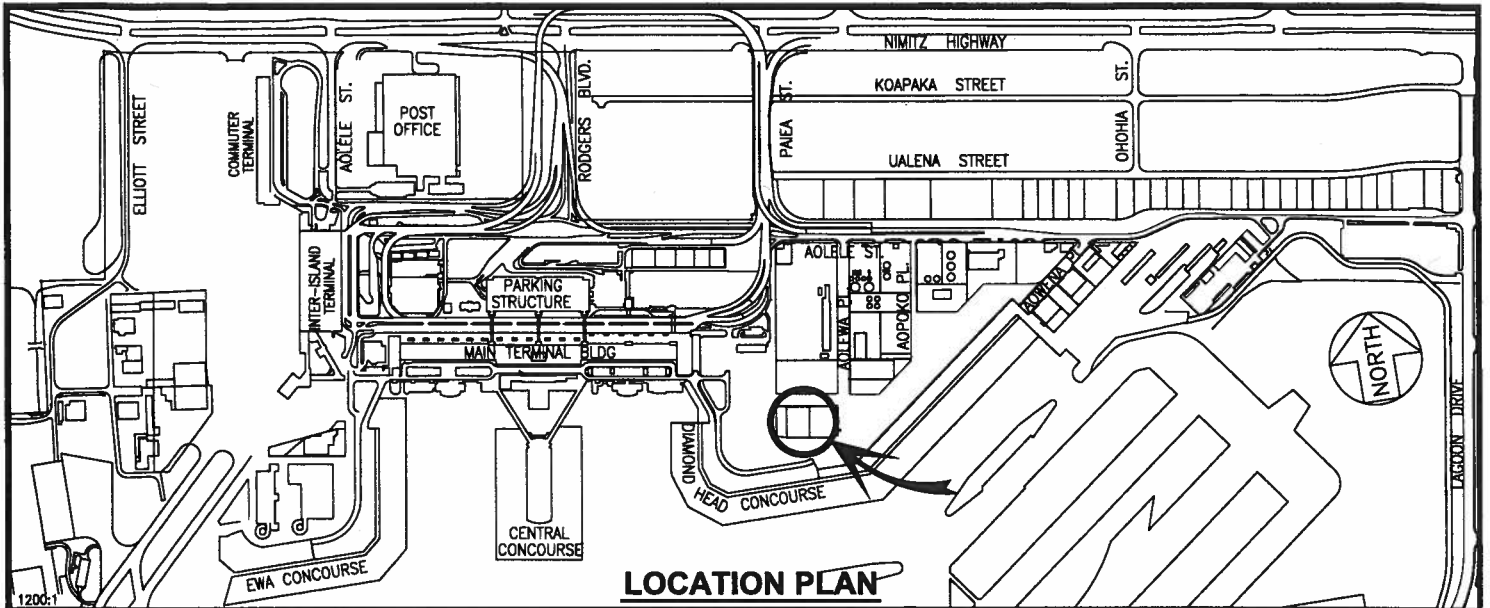


FORD N. FUCHIGAMI
Director of Transportation

APPROVED FOR SUBMITTAL:



SUZANNE D. CASE
Chairperson and Member



BLDG/ROOM	SQ. FT.
132 104	4,820

AREA/SPACE	SQ. FT.
001 122D	5,849

RP-8567	DATE : JULY 2016	EXHIBIT: A
	DELTA AIR LINES, INC.	BUILDING 132 CARGO BUILDING GROUND LEVEL 132104 001122D PLAT M1

HONOLULU INTERNATIONAL AIRPORT

N:\AIRPORTS\HNL_HONOLULU\CAD\PM_DRAFT\HNL_132104-02_DRAFT.DWG