

DAVID Y. IGE
GOVERNOR



STATE OF HAWAII
DEPARTMENT OF TRANSPORTATION
869 PUNCHBOWL STREET
HONOLULU, HAWAII 96813-5097

FORD N. FUCHIGAMI
DIRECTOR

Deputy Directors
JADE T. BUTAY
ROSS M. HIGASHI
EDWIN H. SNIFFEN
DARRELL T. YOUNG

IN REPLY REFER TO:

Board of Land and
Natural Resources
State of Hawai'i
Honolulu, Hawai'i

ISSUANCE OF A REVOCABLE PERMIT FOR VEHICLE PARKING
FEDEX GROUND PACKAGE SYSTEM, INC.
KONA INTERNATIONAL AIRPORT AT KEĀHOLE
TAX MAP KEY: (3) 7-3-43: PORTION OF 40

HAWAI'I

REQUEST:

Issuance of a Revocable Permit for Vehicle Parking (parking permit) to Fedex Ground Package System, Inc. (FEDEX)

LEGAL REFERENCE:

Subsection 171-11 and 171-55, Hawai'i Revised Statutes (HRS)

APPLICANT:

FEDEX, whose mailing address is 1000 FedEx Drive, Moon Township, Pennsylvania 15108

AREA:

Area/Space No. 610-155S, containing an area of approximately 171 square feet,
Area/Space No. 610-155T, containing an area of approximately 171 square feet,
Area/Space No. 610-155U, containing an area of approximately 342 square feet and
Area/Space No. 610-155V, containing an area of approximately 342 square feet
as shown on the attached map labeled Exhibit A.

LOCATION AND TAX MAP KEY:

Portion of Kona International Airport at Keāhole (KOA), Kailua-Kona, Island of Hawai'i, identified by Tax Map Key: 3rd division, 7-3-43: Portion of 40

ITEM M-15

**BLNR- ISSUANCE OF A REVOCABLE PERMIT FOR VEHICLE PARKING
FEDEX GROUND PACKAGE SYSTEM, INC.**

Page 2

ZONING:

State Land Use District: Urban & Conservation
County of Hawai'i: Industrial (MG-1a) and Open

LAND TITLE STATUS:

Section 5(b), Hawai'i Admissions Act (ceded)
DHHL, 30% entitlement lands Yes _____ No X

CURRENT USE STATUS:

Airport and aeronautical purposes

CHARACTER OF USE:

Vehicle parking

COMMENCEMENT DATE:

4/1/2016

MONTHLY RENTAL:

\$ 416.00 (as determined from the DOTA schedule of rates and charges established by appraisal of Airports property statewide)

SECURITY DEPOSIT:

\$ 1,248.00 (three times the monthly rental)

DCCA VERIFICATION:

N/A

CHAPTER 343, HRS - ENVIRONMENTAL ASSESSMENT:

Pursuant to Section 11-200-8(a), Environmental Impact Statement Rules of the Department of Health, State of Hawai'i, this disposition is exempt from requirements regarding preparation of an environmental assessment, negative declaration, or environmental impact statement as required by Chapter 343, Hawai'i Revised Statutes, as amended, relating to Environmental Impact Statements, because the proposed action falls within Exemption Class #1, Comprehensive Exemption List for the State of Hawai'i, Department of Transportation, dated November 15, 2000, as approved by the

**BLNR- ISSUANCE OF A REVOCABLE PERMIT FOR VEHICLE PARKING
FEDEX GROUND PACKAGE SYSTEM, INC.**

Page 3

Environmental Quality Council. Exemption Class #1 covers operations, repairs, or maintenance of existing structures, facilities, equipment, or topographical features involving negligible or no expansion or change of use beyond that previously existing.

REMARKS:

The DOT has no objections to FEDEX's request and therefore, in accordance with Sections 171-11 and 171-55, HRS, relating to Public Purposes and Permits, respectively, and therefore, the DOT proposes to issue a month-to-month parking permit to FEDEX for vehicle parking at KOA.

RECOMMENDATION:


That the Board authorize the Department of Transportation to issue a month-to-month parking permit to FEDEX subject to: (1) terms and conditions herein outlined, which are by reference incorporated herein; and (2) such additional terms and conditions as may be prescribed by the Director of Transportation to best serve the interests of the State.

Respectfully submitted,

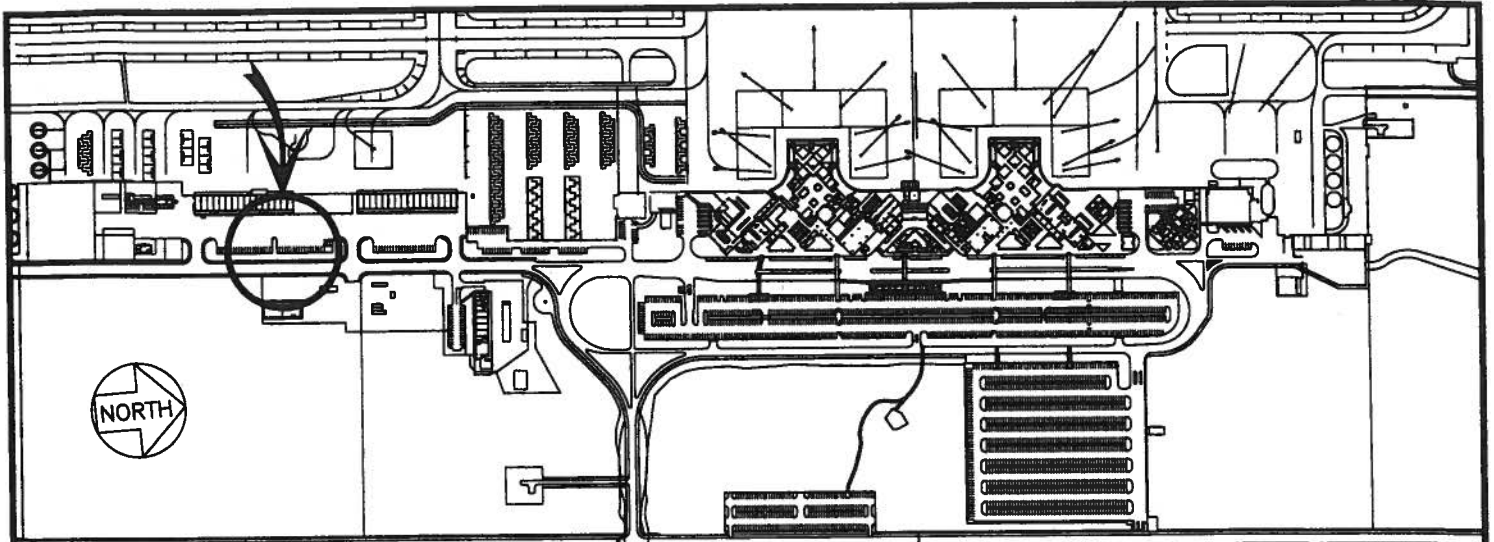


FORD N. FUCHIGAMI
Director of Transportation

APPROVED FOR SUBMITTAL:

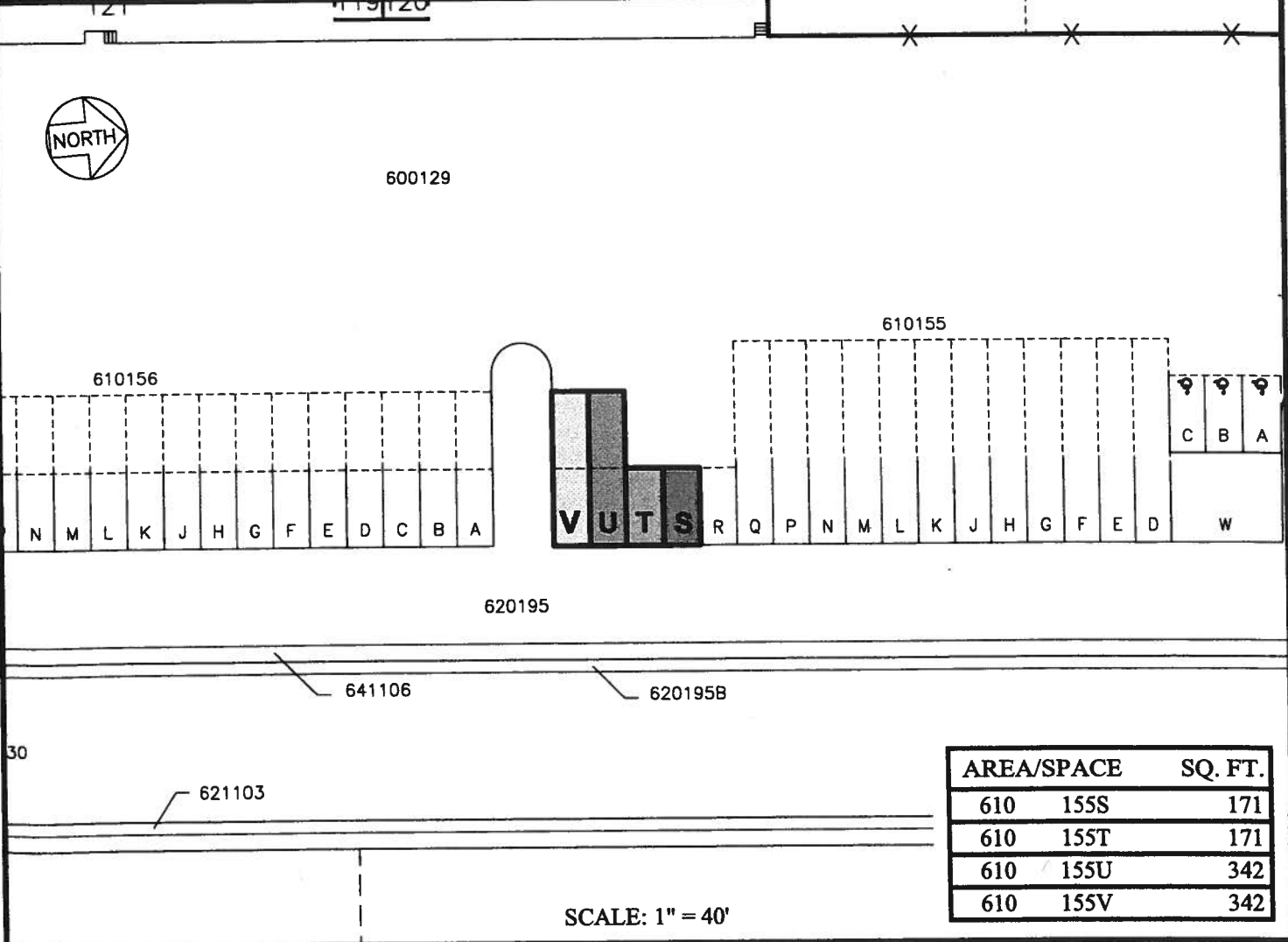


SUZANNE D. CASE
Chairperson and Member



LOCATION PLAN

600:1



AREA/SPACE	SQ. FT.
610 155S	171
610 155T	171
610 155U	342
610 155V	342

SCALE: 1" = 40'

PP-16-N002

DATE : SEPTEMBER 2016

EXHIBIT: **A**



Airports Division

**FEDEX GROUND
PACKAGE SYSTEM, INC.**

PARKING STALLS

**610155S-U
PLATS C1, 39**