

DAVID Y. IGE  
GOVERNOR



STATE OF HAWAII  
DEPARTMENT OF TRANSPORTATION  
869 PUNCHBOWL STREET  
HONOLULU, HAWAII 96813-5097

FORD N. FUCHIGAMI  
DIRECTOR

Deputy Directors  
JADE T. BUTAY  
ROSS M. HIGASHI  
EDWIN H. SNIFFEN  
DARRELL T. YOUNG

IN REPLY REFER TO:

Board of Land and  
Natural Resources  
State of Hawai'i  
Honolulu, Hawai'i

ISSUANCE OF A REVOCABLE PERMIT FOR A T-HANGAR  
FOR STORAGE AND MAINTENANCE OF AIRCRAFT  
MID PACIFIC AERO SERVICES LLC  
HONOLULU INTERNATIONAL AIRPORT  
TAX MAP KEY: (1) 1-1-76: PORTION OF 21

O'AHU

**REQUEST:**

Issuance of a Revocable Permit for a T-Hangar for storage and maintenance of aircraft to Mid Pacific Aero Services LLC, situated at Honolulu International Airport.

**LEGAL REFERENCE:**

Section 171-55, Hawai'i Revised Statutes

**APPLICANT:**

Mid Pacific Aero Services LLC, whose business address is 300 Karsten Drive, Wahiawa, Hawai'i 96786.

**LOCATION AND TAX MAP KEY:**

A portion of Honolulu International Airport, Island of O'ahu, State of Hawai'i, identified as the South Ramp, Tax Map Key: 1<sup>st</sup> Division, 1-1-76: portion of 21.

**AREA:**

Area/Space No. 421-125, containing an area of approximately 1,247 square feet, as shown and delineated on the attached map labeled Exhibit "A".

**ZONING:**

State Land Use District: Urban  
City and County of Honolulu LUO: Industrial (I-2)

**ITEM M-3**

BLNR – ISSUANCE OF A REVOCABLE PERMIT FOR A T-HANGAR  
FOR STORAGE AND MAINTENANCE OF AIRCRAFT  
MID PACIFIC AERO SERVICES LLC

Page 2

LAND TITLE STATUS:

Non-ceded - Section 5(a) lands of the Hawai'i Admission Act  
DHHL 30% entitlement lands pursuant to Hawai'i Admission Act YES \_\_\_ NO X

CURRENT USE STATUS:

Land presently encumbered by Governor's Executive Order No. 3201, dated June 8, 1983, setting aside 3,152.177 acres designated as Honolulu International Airport under the control and management of the State of Hawai'i, Department of Transportation, Airports Division for Airport Purposes.

CHARACTER OF USE:

T-Hangar for storage and maintenance of aircraft (1951 Cessna 170A, Tail No. N-5723C)

COMMENCEMENT DATE:

Upon execution of the revocable permit.

MONTHLY RENTAL:

\$729.00 (\$674.00, as determined from the DOTA schedule of rates and charges established by appraisal of Airports property statewide plus \$55.00 for electricity)

SECURITY DEPOSIT:

Three (3) times the monthly rental in effect.

CHAPTER 343, HRS - ENVIRONMENTAL ASSESSMENT:

Pursuant to Section 11-200-8(a), Environmental Impact Statement Rules of the Department of Health, State of Hawai'i, this disposition is exempt from requirements regarding preparation of an environmental assessment, negative declaration, or environmental impact statement as required by Chapter 343, Hawai'i Revised Statutes, as amended, relating to Environmental Impact Statements, because the proposed action falls within Exemption Class #1, Comprehensive Exemption List for the State of Hawai'i, Department of Transportation, dated November 15, 2000, as approved by the Environmental Quality Council. Exemption Class #1 covers operations, repairs, or maintenance of existing structures, facilities, equipment, or topographical features involving negligible or no expansion or change of use beyond that previously existing.

**BLNR – ISSUANCE OF A REVOCABLE PERMIT FOR A T-HANGAR  
FOR STORAGE AND MAINTENANCE OF AIRCRAFT  
MID PACIFIC AERO SERVICES LLC**

Page 3

**REMARKS:**

The issuance of a revocable permit to Mid Pacific Aero Services LLC for a T-Hangar for storage and maintenance of aircraft at Honolulu International Airport complies with Chapter 343, Exemption Class 1.D.10 as a continuing aeronautical use, and is in accordance with Section 171-55 HRS, relating to Permits.

**RECOMMENDATION:**

That the Board authorize the Department of Transportation to issue a month-to-month revocable permit to Mid Pacific Aero Services LLC, subject to: (1) terms and conditions herein outlined, which are by reference incorporated herein; and (2) such additional terms and conditions as may be prescribed by the Director of Transportation to best serve the interests of the State.

Respectfully submitted,

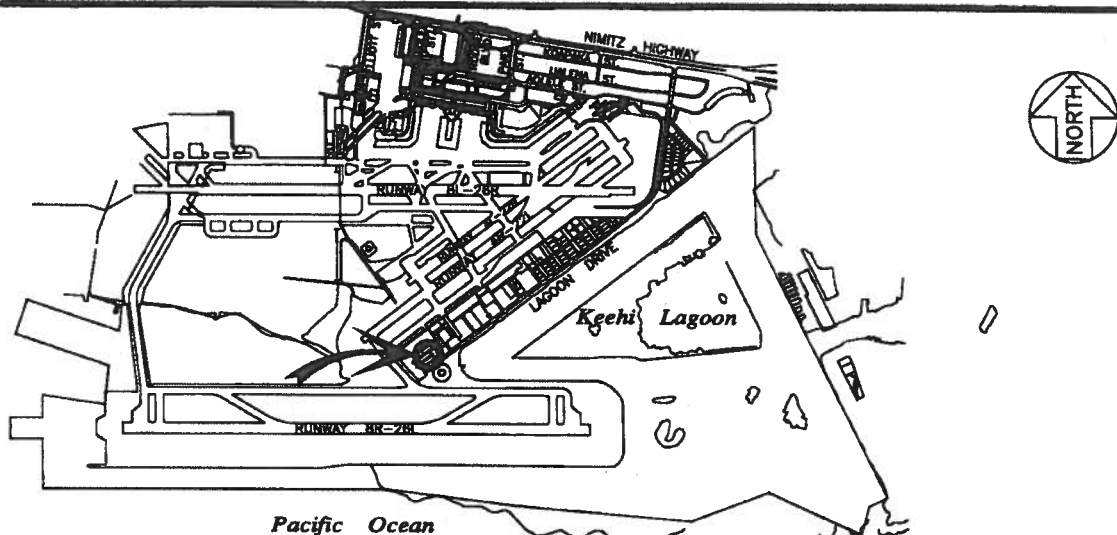


**FORD N. FUCHIGAMI**  
Director of Transportation

**APPROVED FOR SUBMITTAL:**

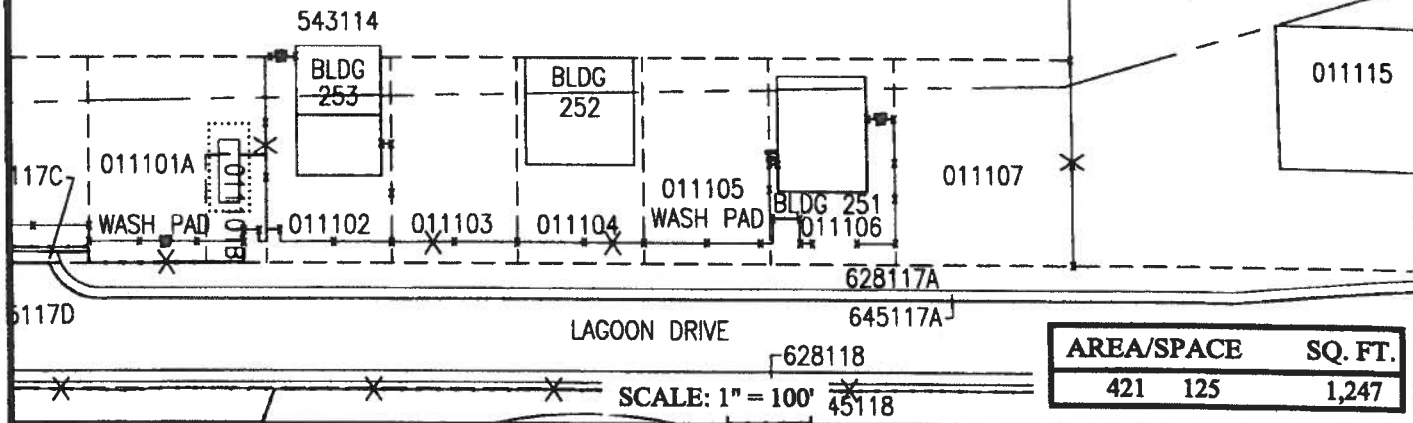
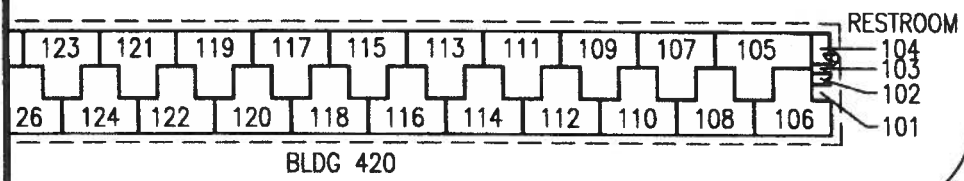
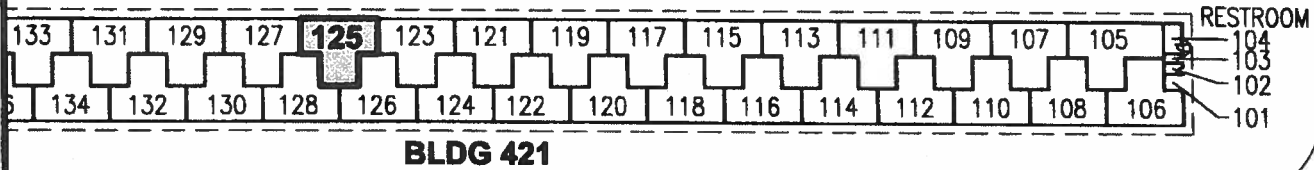
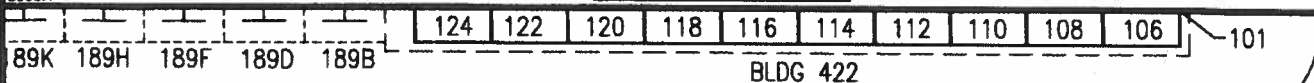


**SUZANNE D. CASE**  
Chairperson and Member



**LOCATION PLAN**

5000:1



AREA/SPACE	SQ. FT.
421 125	1,247

SCALE: 1" = 100'

RP-8619

DATE : MARCH 2017

EXHIBIT: **A**



**MID PACIFIC  
AERO SERVICES LLC**

**T-HANGARS  
GENERAL AVIATION  
SOUTH RAMP**

**421125  
PLAT 45**

**HONOLULU INTERNATIONAL AIRPORT**

N:\AIRPORTS\HNL\_HONOLULU\CAD\PM\HNL\_421125-01.DWG